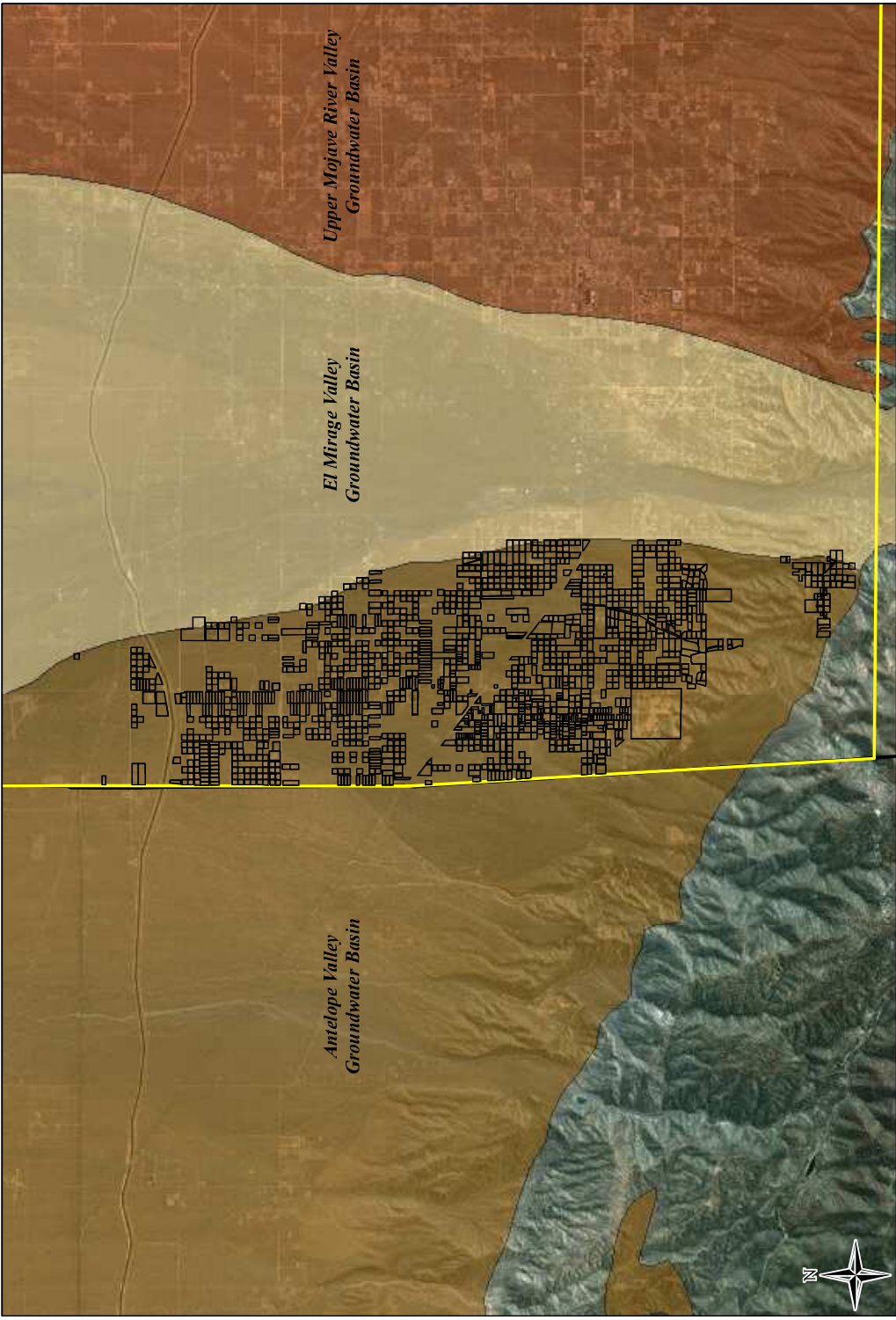








Aleshire & Wynder, LLP
Phelan Piñon Hills Community Services District

16-Jan-14



Map Features

-  Parcel with Active Water Service Connection
-  Phelan Piñon Hills Community Services District
-  County Boundary
-  Antelope Valley Groundwater Basin
-  El Mirage Valley Groundwater Basin
-  Upper Mojave River Valley Groundwater Basin

Basemap Source: www.esri.com



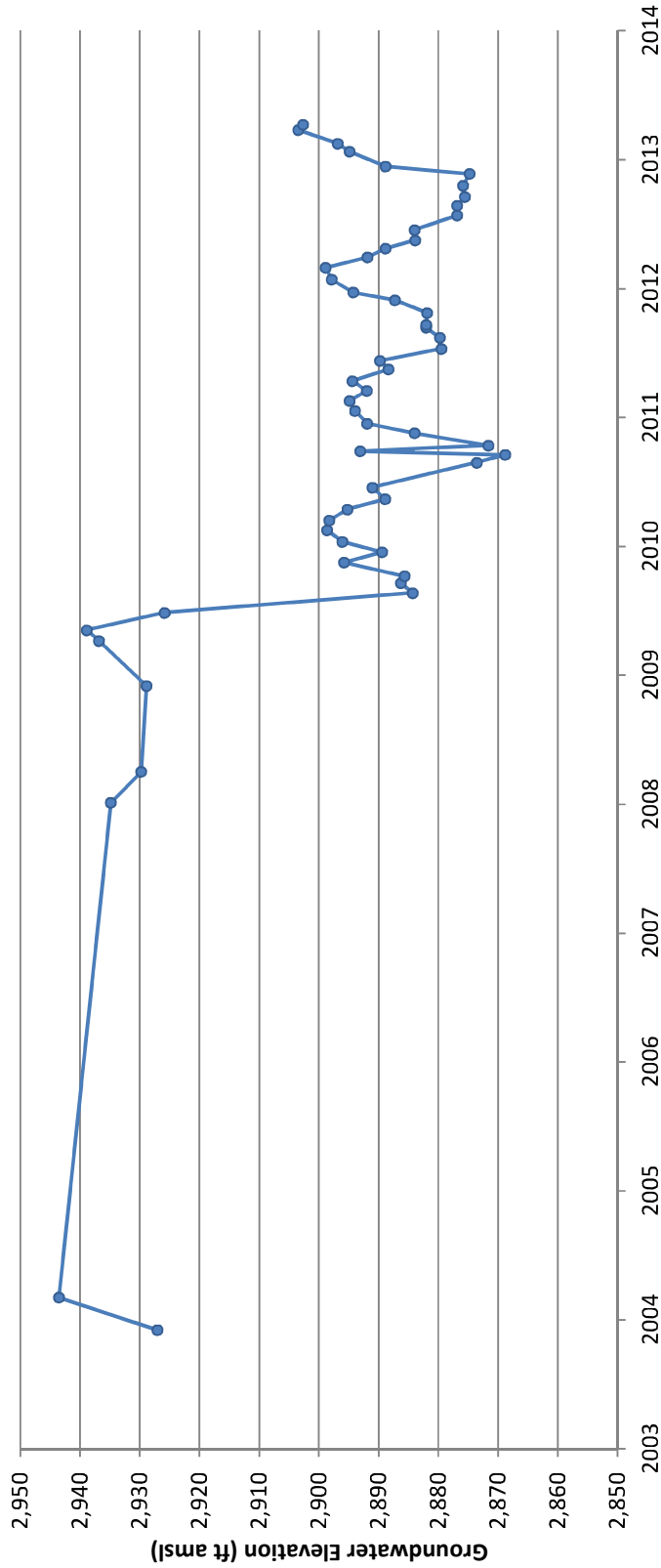
Parcels With Active Water Connections - 2013

Well #14

LevDate	DEM_ELEV	BGS	DEM_GW Elev	DataSRC
12/3/2003	3481	554	2927	Field Inspection Report
3/4/2004	3481	537.5	2943.5	Well Completion Report
1/5/2008			2934.84	2013 well soundings
4/2/2008			2929.74	2014 well soundings
12/1/2008			2928.84	2015 well soundings
4/8/2009			2936.84	2016 well soundings
5/8/2009			2938.84	2017 well soundings
6/26/2009			2925.84	2018 well soundings
8/21/2009			2884.24	2019 well soundings
9/18/2009			2886.24	2020 well soundings
10/8/2009			2885.64	2021 well soundings
11/16/2009			2895.74	2022 well soundings
12/15/2009			2889.38	2023 well soundings
1/14/2010			2896.07	2024 well soundings
2/15/2010			2898.59	2025 well soundings
3/15/2010			2898.23	2026 well soundings
4/15/2010			2895.19	2027 well soundings
5/14/2010			2888.89	2028 well soundings
6/16/2010			2891.03	2029 well soundings
8/26/2010			2873.54	2030 well soundings
9/17/2010			2868.76	2031 well soundings
9/27/2010			2893.04	2032 well soundings
10/13/2010			2871.59	2033 well soundings
11/17/2010			2883.94	2034 well soundings
12/14/2010			2891.88	2035 well soundings
1/19/2011			2893.91	2036 well soundings
2/17/2011			2894.86	2037 well soundings
3/17/2011			2891.96	2038 well soundings
4/14/2011			2894.38	2039 well soundings
5/17/2011			2888.33	2040 well soundings
6/10/2011			2889.74	2041 well soundings
7/14/2011			2879.47	2042 well soundings
8/15/2011			2879.73	2043 well soundings
9/12/2011			2882.04	2044 well soundings
9/20/2011			2882.04	2045 well soundings
10/24/2011			2881.84	2046 well soundings
11/29/2011			2887.24	2047 well soundings
12/21/2011			2894.24	2048 well soundings
1/26/2012			2897.84	2049 well soundings
2/29/2012			2898.84	2050 well soundings
3/29/2012			2891.84	2051 well soundings
4/23/2012			2888.84	2052 well soundings
5/17/2012			2883.84	2053 well soundings
6/15/2012			2883.94	2054 well soundings

7/26/2012	2876.84	2055 well soundings
8/23/2012	2876.84	2056 well soundings
9/17/2012	2875.54	2057 well soundings
10/19/2012	2875.84	2058 well soundings
11/21/2012	2874.74	2059 well soundings
12/12/2012	2888.84	2060 well soundings
1/23/2013	2894.84	2061 well soundings
2/15/2013	2896.84	2062 well soundings
3/25/2013	2903.44	2063 well soundings
4/9/2013	2902.64	2064 well soundings

CSD Well #14



Notes:

Data through April 2013.
ft amsl = feet above mean sea level.

**Summary Annual Groundwater Production
 Phelan Piñon Hills Community Services District
 Well No. 14**

Year	Month	Monthly Groundwater Production Based on Daily Flow Meter Data (Acre-ft)
2004	March	0.00
	April	0.00
	May	0.00
	June	0.00
	July	0.00
	August	0.00
	September	0.00
	October	0.00
	November	0.00
	December	0.00
	Total 2004	0.00
2005	January	0.00
	February	0.00
	March	0.00
	April	0.00
	May	0.00
	June	0.00
	July	0.00
	August	0.00
	September	0.10
	October	0.49
	November	0.52
	December	0.00
Total 2005	1.11	



**Summary Annual Groundwater Production
 Phelan Piñon Hills Community Services District
 Well No. 14**

Year	Month	Monthly Groundwater Production Based on Daily Flow Meter Data (Acre-ft)
2006	January	0.09
	February	3.05
	March	7.89
	April	8.61
	May	10.18
	June	26.85
	July	37.86
	August	29.94
	September	22.38
	October	13.49
	November	3.81
	December	0.00
		Total 2006
2007	January	0.00
	February	0.00
	March	0.00
	April	0.00
	May	0.00
	June	1.40
	July	19.55
	August	0.00
	September	0.00
	October	0.00
	November	0.00
	December	0.00
		Total 2007



**Summary Annual Groundwater Production
 Phelan Piñon Hills Community Services District
 Well No. 14**

Year	Month	Monthly Groundwater Production Based on Daily Flow Meter Data (Acre-ft)
2008	January	0.00
	February	0.00
	March	22.46
	April	78.98
	May	79.41
	June	24.81
	July	49.15
	August	76.99
	September	45.87
	October	50.58
	November	64.96
	December	0.06
		Total 2008
2009	January	0.00
	February	0.00
	March	0.00
	April	0.00
	May	0.00
	June	9.15
	July	100.66
	August	98.73
	September	96.64
	October	85.04
	November	71.65
	December	96.79
		Total 2009



**Summary Annual Groundwater Production
 Phelan Piñon Hills Community Services District
 Well No. 14**

Year	Month	Monthly Groundwater Production Based on Daily Flow Meter Data (Acre-ft)
2010	January	92.21
	February	80.79
	March	93.53
	April	99.12
	May	102.36
	June	96.97
	July	97.70
	August	97.91
	September	89.57
	October	83.88
	November	87.04
	December	89.36
	Total 2010	
2011	January	85.36
	February	77.63
	March	83.45
	April	88.57
	May	95.50
	June	92.05
	July	95.15
	August	93.66
	September	89.34
	October	92.59
	November	81.15
	December	78.68
	Total 2011	



**Summary Annual Groundwater Production
 Phelan Piñon Hills Community Services District
 Well No. 14**

Year	Month	Monthly Groundwater Production Based on Daily Flow Meter Data (Acre-ft)
2012	January	76.12
	February	74.44
	March	86.44
	April	88.14
	May	93.24
	June	91.08
	July	91.79
	August	92.22
	September	88.31
	October	87.67
	November	86.27
	December	79.54
	Total 2012	
2013	January	74.53
	February	59.20
	March	83.80
	April	86.87
	May	94.50
	June	85.18
	July	94.90
	August	90.43
	September	88.13
	October	93.47
	November	81.52
	December	95.48
	Total 2013	

