

LAW OFFICES OF
BEST BEST & KRIEGER LLP
3750 UNIVERSITY AVENUE, SUITE 400
P.O. BOX 1028
RIVERSIDE, CA 92502

1
2
3
4
5
6
7
8
9
10
11
12
13
14
15
16
17
18
19
20
21
22
23
24
25
26
27
28

Palm Ranch Irrigation District

Approved as to form by: Wayne Lemieux

By: 

By: 

Phelan Pinon Hills Community Services District

Approved as to form by: Francis Logan

By: _____

By: _____

Quartz Hill Water District

Approved as to form by: Brad Weeks

By: _____

By: _____

Rosamond Community Services Districts

Approved as to form by: Eric L. Garner

By: _____

By: _____

Desert Lake Community Services District

Approved as to form by: Wayne Lemieux

By: _____

By: _____

North Edwards Water District

Approved as to form by: Wayne Lemieux

By: _____

By: _____

SETTLEMENT STIPULATION

- 24 -

LAW OFFICES OF
BEST BEST & KRIEGER, LLP
3750 UNIVERSITY AVENUE, SUITE 400
P.O. BOX 1028
RIVERSIDE, CA 92502

1
2
3
4
5
6
7
8
9
10
11
12
13
14
15
16
17
18
19
20
21
22
23
24
25
26
27
28

Palm Ranch Irrigation District

Approved as to form by: Wayne Lemieux

By: _____

By: _____

Phelan Pinon Hills Community Services District

Approved as to form by: Francis Logan

By: _____

By: _____

Quartz Hill Water District

Approved as to form by: Brad Weeks

By: *Colleen P. Krieger*

By: *Brad Weeks*

Rosamond Community Services Districts

Approved as to form by: Eric L. Garner

By: _____

By: _____

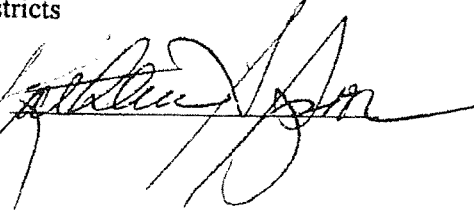
SETTLEMENT STIPULATION

1
2
3
4
5
6
7
8
9
10
11
12
13
14
15
16
17
18
19
20
21
22
23
24
25
26
27
28

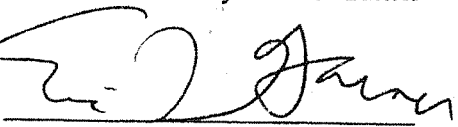
Rosamond Community Services
Districts

Approved as to form by: Eric L. Garner

By:



By:



LAW OFFICES OF
BEST BEST & KRIEGER LLP
3750 UNIVERSITY AVENUE, SUITE 400
P.O. BOX 1028
RIVERSIDE, CA 92502

SETTLEMENT STIPULATION

LAW OFFICES OF
BEST BEST & KRIEGER LLP
3750 UNIVERSITY AVENUE, SUITE 400
P.O. BOX 1028
RIVERSIDE, CA 92502

1
2
3
4
5
6
7
8
9
10
11
12
13
14
15
16
17
18
19
20
21
22
23
24
25
26
27
28

Palm Ranch Irrigation District

Approved as to form by: Wayne Lemieux

By: _____

By: _____

Phelan Pinon Hills Community Services District

Approved as to form by: Francis Logan

By: _____

By: _____

Quartz Hill Water District

Approved as to form by: Brad Weeks

By: _____

By: _____

Rosamond Community Services Districts

Approved as to form by: Eric L. Garner

By: _____

By: _____

Desert Lake Community Services District

Approved as to form by: Wayne Lemieux

By: *Salli H. Katsopoulos*

By: *Wayne Lemieux*

North Edwards Water District

Approved as to form by: Wayne Lemieux

By: _____

By: *Wayne Lemieux*

SETTLEMENT STIPULATION

LAW OFFICES OF
BEST BEST & KRIEGER LLP
3750 UNIVERSITY AVENUE, SUITE 400
P.O. BOX 1028
RIVERSIDE, CA 92502

1
2
3
4
5
6
7
8
9
10
11
12
13
14
15
16
17
18
19
20
21
22
23
24
25
26
27
28

Palm Ranch Irrigation District

Approved as to form by: Wayne Lemieux

By: _____

By: _____

Phelan Pinon Hills Community Services District

Approved as to form by: Francis Logan

By: _____

By: _____

Quartz Hill Water District

Approved as to form by: Brad Weeks

By: _____

By: _____

Rosamond Community Services Districts

Approved as to form by: Eric L. Garner

By: _____

By: _____

Desert Lake Community Services District

Approved as to form by: Wayne Lemieux

By: _____

By: _____

North Edwards Water District

Approved as to form by: Wayne Lemieux

By: *Rollie N. Kestopoulos*

By: *Wayne Lemieux*

SETTLEMENT STIPULATION

DEFAULTS ENTERED

Doe/Roe No.	Name of Roe Cross-Defendant	Default Entered	Default Posted
3	Jacqueline Ackermann	3/23/2012	5/8/2013
4	ADVINCULA, CENON S	3/23/2012	5/8/2013
5	ADVINCULA, OLIVA M	3/23/2012	5/8/2013
6	ALDAIS, MARWAN M.	3/23/2012	5/8/2013
7	AGUSTINES, ANTONIO U	3/23/2012	5/8/2013
7	Allen Alevy	3/23/2012	5/8/2013
8	ARCHER, GEORGINE J.	3/23/2012	5/8/2013
8	Allen Alevy and Alevy Family Trust	3/23/2012	5/8/2013
9	ARCHER GEORGINE J as Trustee for the Georgine J. Archer Trust	3/23/2012	5/8/2013
10	BARKS, GUSS A. JR.	3/23/2012	5/8/2013
11	BRONSTON, LEROY DANIEL	3/23/2012	5/8/2013
12	BAYANI, ILDEFONSO S.	3/23/2012	5/8/2013
13	Castle Butte Dev. Corp	3/23/2012	5/8/2013
13	BAYANI, NILDA V.	3/23/2012	5/8/2013
16	FUNK, JOAN A	3/23/2012	5/8/2013
19	GENUS L P	3/23/2012	5/8/2013
24	Illy King	3/23/2012	5/8/2013
24	Melinda E Cameron	3/23/2012	5/8/2013
25	Illy King Family Trust	3/23/2012	5/8/2013
25	Catellus Development Corporation	3/23/2012	5/8/2013
26	KUTU INVESTMENT CO - Suspended	3/23/2012	5/8/2013

DEFAULTS ENTERED

Doe/Roe No.	Name of Roe Cross-Defendant	Default Entered	Default Posted
26	Bong S. Chang	3/23/2012	
27	LAI, EVA	3/23/2012	5/8/2013
27	CHANG, JEANNA Y.	3/23/2012	5/8/2013
28	LAI, PAUL	3/23/2012	5/8/2013
29	CHETRIT, JACOB	3/23/2012	5/8/2013
31	Pei Chi Lin	3/23/2012	5/8/2013
31	Lee Shiow Chiou	3/23/2012	5/8/2013
32	CHUNG, M S	3/23/2012	5/8/2013
35	COLE, C.C. THELMA -	3/23/2012	5/8/2013
36	COLE, J.	3/23/2012	5/8/2013
37	RUDNICK, REBECCA -	3/23/2012	5/8/2013
37	J. & C. C. Thelma Cole and T. J. Cole Trust (J. Cole as Trustee for the T. J. Cole Trust)	3/23/2012	5/8/2013
43	DAVIS, CATHARINE M	3/23/2012	5/8/2013
44	Milton S. Davis	3/23/2012	5/8/2013
46	Sarkis Djanibekyan	3/23/2012	5/8/2013
47	DONG, HONG	3/23/2012	5/8/2013
48	DONG, YING X.	3/23/2012	5/8/2013
53	Lewis Friedrichsen	3/23/2012	5/8/2013
54	Lewis Friedrichsen as Trustee of the Friedrichsen Family Trust	3/23/2012	5/8/2013
55	Aurora P Gabuya	3/23/2012	5/8/2013
58	Betty Gluckstein	3/23/2012	5/8/2013
60	GLUCKSTEIN, MORRIS -	3/23/2012	5/8/2013
61	GLUCKSTEIN, ROSE -	3/23/2012	5/8/2013
66	GORRINDO, L. -	3/23/2012	5/8/2013
71	HAUKE, ANDREAS	3/23/2012	5/8/2013
72	HAUKE, MARILYN	3/23/2012	5/8/2013
75	HIGELMIRE, DONNA	3/23/2012	5/8/2013

DEFAULTS ENTERED

Doe/Roe No.	Name of Roe Cross-Defendant	Default Entered	Default Posted
76	Michael N. Higelmire	3/23/2012	5/8/2013
78	Hooshpack Dev Inc	3/23/2012	5/8/2013
79	Chi S Huang	3/23/2012	5/8/2013
80	HUANG, SUCHU T.	3/23/2012	5/8/2013
81	Hypericum Interest LLC	3/23/2012	5/8/2013
82	IRANINEZHAD, DARYUSH	3/23/2012	5/8/2013
83	IRANINEZHAD, MINOO	3/23/2012	5/8/2013
84	KADIVAR,ESFANDIAR -	3/23/2012	5/8/2013
85	KADIVAR FAMILY TRUST (Esfandiar Kadivar as Trustee of the Kadivar Family Trust) -	3/23/2012	5/8/2013
88	Cheng Lin Kang	3/23/2012	5/8/2013
94	YOSHIMATSU, KAZUKO	3/23/2012	5/8/2013
95	Billy H. Kim (AND YING X AND HONG DONG ?)	3/23/2012	5/8/2013
106	LAWRENCE, CHARLES TRUST	3/23/2012	5/8/2013
108	Light Andrew & Youngnam	3/23/2012	5/8/2013
109	Man C Lo	3/23/2012	5/8/2013
110	SHIUNG, RU	3/23/2012	5/8/2013
111	Lyman C. Miles	3/23/2012	5/8/2013
112	Lyman C. Miles as Trustee for the Miles Family Trust	3/23/2012	5/8/2013
114	Mission Bell Ranch Development	3/23/2012	5/8/2013
118	M R Nasir	3/23/2012	5/8/2013
119	Souad R Nasir	3/23/2012	5/8/2013
121	Simin C. Neman	3/23/2012	5/8/2013

EXHIBIT 1

DEFAULTS ENTERED

Doe/Roe No.	Name of Roe Cross-Defendant	Default Entered	Default Posted
123	Frank T. Nguyen	3/23/2012	5/8/2013
124	Juanita R Nichols	3/23/2012	5/8/2013
125	Oliver Nichols	3/23/2012	5/8/2013
126	Oliver Nichols as Trustee of the Nichols Family Trust	3/23/2012	5/8/2013
128	POULSEN,NORMAN L	3/23/2012	5/8/2013
130	Victoria Rahimi	3/23/2012	5/8/2013
132	Veronika Reinelt	3/23/2012	5/8/2013
133	Reinelt Rosenloecher Corp PSP	3/23/2012	5/8/2013
140	Rosemount Equities LLC Series	3/23/2012	5/8/2013
141	Royal Investors Group	3/23/2012	5/8/2013
142	ROYAL WESTERN PROPERTIES LLC - ACTIVE	3/23/2012	5/8/2013
145	Daniel Saparzadeh	3/23/2012	5/8/2013
149	SCHWARTZ, MARTIN	3/23/2012	5/8/2013
151	SEVEN STAR UNITED LLC	3/23/2012	5/8/2013
155	Donna L Simpson	3/23/2012	5/8/2013
156	Gareth L Simpson	3/23/2012	5/8/2013
157	Simpson Family Trust (Gareth L. Simpson as Trustee of the Simpson Family Trust)	3/23/2012	5/8/2013
164	GEORGE L STIMSON JR TRUST (George L. Stimson, Jr. as Trustee of the George L. Stimson, Jr. Trust) -	3/23/2012	5/8/2013
167	TIU TIONG D.	3/23/2012	5/8/2013
172	Wilma D. Trueblood	3/23/2012	5/8/2013
173	Wilma D. Trueblood as Trustee of the Trueblood Family Trust	3/23/2012	5/8/2013
177	WALES, KEITH E.	3/23/2012	5/8/2013
180	Alex Wodchis	3/23/2012	5/8/2013

DEFAULTS ENTERED

Doe/Roe No.	Name of Roe Cross-Defendant	Default Entered	Default Posted
181	WONG, ELIZABETH -	3/23/2012	5/8/2013
182	WONG, MARY	3/23/2012	5/8/2013
183	WU, MIKE M.	3/23/2012	5/8/2013
184	WU FAMILY (MIKE M. WU AS TRUSTEE OF THE WU FAMILY TRUST)	3/23/2012	5/8/2013
202	GREEN GROVE MUTUAL WATER COMPANY, INC.	3/23/2012	5/8/2013
206	LLANO FARMS MUTUAL WATER COMPANY	3/23/2012	5/8/2013
208	PIUTE MUTUAL WATER COMPANY	3/23/2012	5/8/2013
210	Wilsona Gardens Mutual Water Company	3/23/2012	5/8/2013
211	Edgemont Acres Mutual Water Company	3/23/2012	5/8/2013
213	ROSAMOND MUTUAL WATER COMPANY	3/23/2012	5/8/2013
Roe 234	Aceh Capital LLC	3/23/2012	5/8/2013
Roe 235	Ehsan Afaghi	3/23/2012	5/8/2013
Roe 237	Bruce Allen	3/23/2012	5/8/2013
Roe 238	Ana Verde Canyon Limited	3/23/2012	5/8/2013
Roe 240	Clinton Edwards Andrews	3/23/2012	5/8/2013
Roe 244	AV Foothills LLC	3/23/2012	5/8/2013
Roe 246	C and P Lancaster Properties, L.L.C.	3/23/2012	5/8/2013
Roe 248	California Springs Land & Development, Inc.	3/23/2012	5/8/2013
Roe 250	Capital Pacific Homes	3/23/2012	5/8/2013
Roe 254	Theodore His-En and Wen-Hui C. Chen, as Co-Trustees of the Chen Family Trust (Established October 27, 1989)	3/23/2012	5/8/2013
Roe 255	Andrew J. Chitica	3/23/2012	5/8/2013

DEFAULTS ENTERED

Doe/Roe No.	Name of Roe Cross-Defendant	Default Entered	Default Posted
Roe 256	Joan K Chitea	3/23/2012	5/8/2013
Roe 257	Myron Z. Chlavin, Trustee	3/23/2012	5/8/2013
Roe 259	Richard L. Clark and Elaine M. Clark, Trs.	3/23/2012	5/8/2013
Roe 260	Menandro M. Marcelo and Ofelia or their Successors, as Trustees of the Menandro and Ofelia Marcelo Family Trust Dated June 2, 2006	3/23/2012	5/8/2013
Roe 261	CPH Tehachapi 280 LLC	3/23/2012	5/8/2013
Roe 264	Cyrstalaire Country Club	3/23/2012	5/8/2013
Roe 266	Kristeen Cua	3/23/2012	5/8/2013
Roe 267	Lita Davies	3/23/2012	5/8/2013
Roe 268	Richard Daniel De La Matyr	3/23/2012	5/8/2013
Roe 269	Long Deng	3/23/2012	5/8/2013
Roe 270	Dr Horton Los Angeles Holding, Inc.	3/23/2012	5/8/2013
Roe 272	Discountland Inc.	3/23/2012	5/8/2013
Roe 273	Dowhen Family	3/23/2012	5/8/2013
Roe 274	Mohammed Naji Elhayek	3/23/2012	5/8/2013
Roe 276	Farhad Alnd	3/23/2012	5/8/2013
Roe 277	Vera V. Farwell	3/23/2012	5/8/2013
Roe 279	Hersell Alnd	3/23/2012	5/8/2013
Roe 281	James H. Gisbrecht and Mary L. Gisbrecht, Trustees	3/23/2012	5/8/2013
Roe 282	Harry C. Godshall, Trustee	3/23/2012	5/8/2013
Roe 284	Sam Haskins	3/23/2012	5/8/2013
Roe 285	Yoram Hassid and Yael Hassid, Trustees	3/23/2012	5/8/2013
Roe 286	David J. Hester, Trustee	3/23/2012	5/8/2013

DEFAULTS ENTERED

Doe/Roe No.	Name of Roe Cross-Defendant	Default Entered	Default Posted
Roe 287	Jack D. Hilton	3/23/2012	5/8/2013
Roe 288	Rita Hilton	3/23/2012	5/8/2013
Roe 289	Clement L. Hirsch, Jr., Trustee	3/23/2012	5/8/2013
Roe 290	Carol A. Hooper	3/23/2012	5/8/2013
Roe 291	Thomas J. Hooper	3/23/2012	5/8/2013
Roe 292	David W. Hopkins	3/23/2012	5/8/2013
Roe 293	Gerald P Hopkins	3/23/2012	5/8/2013
Roe 294	Sumei P Hsi Trust	3/23/2012	5/8/2013
Roe 295	Ja Bin Hsu, Co-Trustee	3/23/2012	5/8/2013
Roe 296	Kangle Huang	3/23/2012	5/8/2013
Roe 297	Yiling Lin	3/23/2012	5/8/2013
Roe 299	James A. Hunter	3/23/2012	5/8/2013
Roe 300	Cyrus Serry	3/23/2012	5/8/2013
Roe 301	J and J General Partnership	3/23/2012	5/8/2013
Roe 302	J P Eliopoulos Enterprises Inc.	3/23/2012	5/8/2013
Roe 303	Jensen Trust	3/23/2012	5/8/2013
Roe 304	Thomas Jones, Trustee	3/23/2012	5/8/2013
Roe 305	Joshua Ranch Development Inc	3/23/2012	5/8/2013
Roe 309	Kathryn T. Karlakis	3/23/2012	5/8/2013
Roe 310	James Kim	3/23/2012	5/8/2013
Roe 311	Glenn K. Kim Family LLC	3/23/2012	5/8/2013
Roe 312	Rose M Kolstad	3/23/2012	5/8/2013
Roe 313	Korda	3/23/2012	5/8/2013
Roe 314	Sarah Korda	3/23/2012	5/8/2013
Roe 315	Lancaster and 120 111 LLC	3/23/2012	5/8/2013

EXHIBIT 1

DEFAULTS ENTERED

Doe/Roe No.	Name of Roe Cross-Defendant	Default Entered	Default Posted
Roe 317	George R. Lazenby	3/23/2012	5/8/2013
Roe 318	Samuel Lee	3/23/2012	5/8/2013
Roe 319	Youngsin Lee	3/23/2012	5/8/2013
Roe 320	Leona Valley Hunting Club	3/23/2012	5/8/2013
Roe 321	Sue Levine	3/23/2012	5/8/2013
Roe 322	Phillip W. Lewis, Co-Trustee	3/23/2012	5/8/2013
Roe 323	David H. Li	3/23/2012	5/8/2013
Roe 325	Michael Lin	3/23/2012	5/8/2013
Roe 326	Linda L. Yang	3/23/2012	5/8/2013
Roe 330	Lucky 360 Investments LLC	3/23/2012	5/8/2013
Roe 331	Janet L Lyman	3/23/2012	5/8/2013
Roe 332	S. K. Madan	3/23/2012	5/8/2013
Roe 333	Laurie F. Magbanua	3/23/2012	5/8/2013
Roe 339	Lim S Mov	3/23/2012	5/8/2013
Roe 340	MRN Family Limited Partnership	3/23/2012	5/8/2013
Roe 341	Gay E Naiditch	3/23/2012	5/8/2013
Roe 343	Chester Nigra, Co-Trustee	3/23/2012	5/8/2013
Roe 344	Richard J. Nigra, Sr., Custodian	3/23/2012	
Roe 345	Neil Nissing	3/23/2012	5/8/2013
Roe 346	Masaaki Okamoto	3/23/2012	5/8/2013
Roe 347	Keiko Okamoto	3/23/2012	5/8/2013
Roe 348	Noriyuki Okamoto	3/23/2012	5/8/2013
Roe 349	Shoji Okamoto	3/23/2012	5/8/2013
Roe 350	Pacific American Inv Ltd Inc	3/23/2012	5/8/2013
Roe 352	Palmdale 1000 Associates LLC	3/23/2012	5/8/2013

DEFAULTS ENTERED

Doe/Roe No.	Name of Roe Cross-Defendant	Default Entered	Default Posted
Roe 354	Marvin R Perriseau	3/23/2012	5/8/2013
Roe 355	Karen L. Perriseau	3/23/2012	5/8/2013
Roe 356	Frank W. Pritchard	3/23/2012	5/8/2013
Roe 357	Margaret F Pritchard	3/23/2012	5/8/2013
Roe 358	Petersen Properties	3/23/2012	5/8/2013
Roe 359	Thang D Pham	3/23/2012	5/8/2013
Roe 361	John W. Phelps	3/23/2012	5/8/2013
Roe 362	James S. Phelps	3/23/2012	5/8/2013
Roe 365	Efren Reyes	3/23/2012	5/8/2013
Roe 366	RMG Property Holding Two LLC	3/23/2012	5/8/2013
Roe 367	Steffany J Rohn	3/23/2012	5/8/2013
Roe 369	Melvin K. Rust, Trustee	3/23/2012	5/8/2013
Roe 370	San Ho Huang	3/23/2012	5/8/2013
Roe 371	Chi Shiou Huang	3/23/2012	5/8/2013
Roe 373	SCS Family Limited Partnership	3/23/2012	5/8/2013
Roe 374	Thomas P. Sherrill	3/23/2012	5/8/2013
Roe 375	Rachel M. Sherrill	3/23/2012	5/8/2013
Roe 376	Patricia C. Simi, Trustee	3/23/2012	5/8/2013
Roe 379	Columbia M. Stenberg, Trustee	3/23/2012	5/8/2013
Roe 382	Christopher S. Sun, Trustee	3/23/2012	5/8/2013
Roe 383	John S. Sun, Trustee	3/23/2012	5/8/2013

DEFAULTS ENTERED

Doe/Roe No.	Name of Roe Cross-Defendant	Default Entered	Default Posted
Roe 385	Alyce A Togonotti	3/23/2012	5/8/2013
Roe 389	USA Golden Land Investment LLC	3/23/2012	5/8/2013
Roe 392	Roy C. Wang	3/23/2012	5/8/2013
Roe 393	Lucy B. Wang	3/23/2012	5/8/2013
Roe 394	Warm Springs Investments Ltd.	3/23/2012	5/8/2013
Roe 398	West Coast Land Corporation	3/23/2012	5/8/2013
Roe 399	Laurie S. Whicher	3/23/2012	5/8/2013
Roe 400	Joyce P. Whiteside, Trustee	3/23/2012	5/8/2013
Roe 401	Harry Z. Wilson	3/23/2012	5/8/2013
Roe 403	ABC Diamonds Inc.	3/23/2012	5/8/2013
Roe 404	Alesso Lawrence V & Mardean Trust	3/23/2012	5/8/2013
Roe 405	Charles A. Amento	3/23/2012	5/8/2013
Roe 406	Sheila D. Amento	3/23/2012	
Roe 407	Sigitas F. Babusis	3/23/2012	5/8/2013
Roe 408	Banducci Enterprises	3/23/2012	5/8/2013
Roe 409	Banducci Land, L.L.C.	3/23/2012	5/8/2013
Roe 410	Janet Starr Berkey	3/23/2012	5/8/2013
Roe 411	Leslie C. Blenkhorn	3/23/2012	5/8/2013
Roe 412	Cherilyn M. Blenkhorn	3/23/2012	5/8/2013
Roe 414	Mark F. Bramlett	3/23/2012	5/8/2013
Roe 422	Sallie Lynne Chatterton	3/23/2012	5/8/2013
Roe 423	Michael C. Cheiky	3/23/2012	5/8/2013

DEFAULTS ENTERED

Doe/Roe No.	Name of Roe Cross-Defendant	Default Entered	Default Posted
Roe 424	Charity S. Cheiky	3/23/2012	5/8/2013
Roe 427	Vivian A. Chitica	3/23/2012	5/8/2013
Roe 428	Yong See Cho	3/23/2012	5/8/2013
Roe 429	CJH Real Properties LLC	3/23/2012	5/8/2013
Roe 431	William Cordova	3/23/2012	5/8/2013
Roe 432	Virginia C. Cordova	3/23/2012	5/8/2013
Roe 433	Eric M Coyle	3/23/2012	5/8/2013
Roe 434	CPH Rosamond LP	3/23/2012	5/8/2013
Roe 435	Susan Elise Simonelli Crockett	3/23/2012	5/8/2013
Roe 438	Jeannette Damron	3/23/2012	5/8/2013
Roe 439	De Pietro Limited	3/23/2012	5/8/2013
Roe 441	Dora Land	3/23/2012	5/8/2013
Roe 442	Duncan M.B. Separate Prop Trust	3/23/2012	5/8/2013
Roe 443	Carol A. Durst, Trustee	3/23/2012	5/8/2013
Roe 444	Eagle Meadows of No Edwards 435 LLC	3/23/2012	5/8/2013
Roe 445	East Kern Prop LLC	3/23/2012	5/8/2013
Roe 446	East West Land Invs. Inc.	3/23/2012	5/8/2013
Roe 449	Sammy L. Edwards	3/23/2012	5/8/2013
Roe 450	Linda D. Edwards	3/23/2012	5/8/2013
Roe 454	Nancy H Evans	3/23/2012	5/8/2013
Roe 455	Juanita Eyherabide, Trustee	3/23/2012	5/8/2013
Roe 456	Raymond Eyherabide Jr	3/23/2012	5/8/2013
Roe 457	Eyherabide Sheep Co.	3/23/2012	5/8/2013
Roe 459	Farm Estates of the World	3/23/2012	5/8/2013

DEFAULTS ENTERED

Doe/Roe No.	Name of Roe Cross-Defendant	Default Entered	Default Posted
Roe 460	Fernandez Family Liv Trust	3/23/2012	5/8/2013
Roe 462	Fischer Grandchildrens Trust	3/23/2012	5/8/2013
Roe 463	Fogler, Ronald & Irene P. Trust	3/23/2012	5/8/2013
Roe 468	Mansoor Ghaneecian and Fariba Ghaneecian Trust	3/23/2012	5/8/2013
Roe 469	Gill Family Trust 1999	3/23/2012	5/8/2013
Roe 470	Gleason Trust	3/23/2012	5/8/2013
Roe 471	Gold Sky Prop. LLC	3/23/2012	5/8/2013
Roe 473	Guerrant Family Trust	3/23/2012	5/8/2013
Roe 474	Jose Guzman	3/23/2012	5/8/2013
Roe 475	Norma Guzman	3/23/2012	5/8/2013
Roe 476	H & N Development Co., Inc.	3/23/2012	5/8/2013
Roe 478	Mary Lou Byerly Harrell	3/23/2012	5/8/2013
Roe 481	Sam Haskins Trust	3/23/2012	5/8/2013
Roe 482	Bob D. Helton Living Trust	3/23/2012	5/8/2013
Roe 483	Herrmann Family Trust	3/23/2012	5/8/2013
Roe 484	HET 2440 LLC	3/23/2012	5/8/2013
Roe 485	Susan B. Hills Family Trust	3/23/2012	5/8/2013
Roe 486	Ho Giang	3/23/2012	5/8/2013
Roe 487	Mylinh Phan	3/23/2012	5/8/2013
Roe 488	Jennifer Chang Ho Family Trust	3/23/2012	5/8/2013
Roe 492	Horizon Sumitt LLC	3/23/2012	5/8/2013
Roe 493	James T Hsu	3/23/2012	5/8/2013
Roe 494	H Huffnagle	3/23/2012	5/8/2013
Roe 495	Maynard R Huffnagle	3/23/2012	5/8/2013
Roe 498	Iglesia De Dio Pentecostla Mi	3/23/2012	5/8/2013

DEFAULTS ENTERED

Doe/Roe No.	Name of Roe Cross-Defendant	Default Entered	Default Posted
Roe 499	Invescorp Ltd	3/23/2012	5/8/2013
Roe 503	Javid Investments, L.L.C.	3/23/2012	5/8/2013
Roe 504	Emma Lou Johnson	3/23/2012	5/8/2013
Roe 505	Annette F. Kam	3/23/2012	5/8/2013
Roe 509	Richard M. & Sandra A Lang Family Trust	3/23/2012	5/8/2013
Roe 512	Daniel Bronston Leroy	3/23/2012	5/8/2013
Roe 513	Mary Ann Lewis	3/23/2012	5/8/2013
Roe 514	Lien Family Survivors Trust	3/23/2012	5/8/2013
Roe 515	Christine Lin	3/23/2012	5/8/2013
Roe 516	Los Angeles Land Investment	3/23/2012	5/8/2013
Roe 517	Loyola Marymount University	3/23/2012	5/8/2013
Roe 518	Clark C Lu	3/23/2012	5/8/2013
Roe 519	Danny C Lu	3/23/2012	5/8/2013
Roe 520	Douglas R. McAvoy and Amy M. McAvoy Trust	3/23/2012	5/8/2013
Roe 521	Roberta Merry Family Trust	3/23/2012	5/8/2013
Roe 522	Hans Peter Meyer	3/23/2012	5/8/2013
Roe 523	Ipbi Kim Meyer	3/23/2012	5/8/2013
Roe 525	S Huth-Tanner	3/23/2012	5/8/2013
Roe 526	Jamie Miller	3/23/2012	5/8/2013
Roe 527	Mojave & Tropico LLC	3/23/2012	5/8/2013
Roe 530	Elaine L. Morales	3/23/2012	5/8/2013
Roe 531	Mary B Mower	3/23/2012	5/8/2013
Roe 537	Fred Piwenitzky	3/23/2012	5/8/2013

DEFAULTS ENTERED

Doe/Roe No.	Name of Roe Cross-Defendant	Default Entered	Default Posted
Roe 538	Sachiko Piwenzky	3/23/2012	5/8/2013
Roe 539	Pledge Investment LLC	3/23/2012	5/8/2013
Roe 540	Lulu Edna Pollock	3/23/2012	5/8/2013
Roe 541	Popinjay Corp. N V	3/23/2012	5/8/2013
Roe 542	Donald L. Purviance	3/23/2012	5/8/2013
Roe 544	Ronald A Ralphs	3/23/2012	5/8/2013
Roe 545	Ramos Trust	3/23/2012	5/8/2013
Roe 547	Edgar Reinoso	3/23/2012	5/8/2013
Roe 551	Lori March Scourby	3/23/2012	5/8/2013
Roe 552	Sellsite & United LLC	3/23/2012	5/8/2013
Roe 554	SF Pacific Properties Inc	3/23/2012	5/8/2013
Roe 557	Theodore H Sims, Jr.	3/23/2012	5/8/2013
Roe 559	Mi R Song	3/23/2012	5/8/2013
Roe 560	John Stern and Eleanor Stern Trust	3/23/2012	5/8/2013
Roe 561	Helen H. Stookey	3/23/2012	5/8/2013
Roe 563	John Su	3/23/2012	5/8/2013
Roe 564	Chen Su	3/23/2012	5/8/2013
Roe 565	Supermed Health Inc.	3/23/2012	5/8/2013
Roe 566	Sylvan Vista Development Co.	3/23/2012	5/8/2013
Roe 567	Tamkin Family Trust	3/23/2012	5/8/2013
Roe 568	Charles Tapia and Nellie Tapia Family Trust	3/23/2012	5/8/2013
Roe 569	Tazman, A Limited Liability Company	3/23/2012	5/8/2013
Roe 571	United Customhouse Brokers Inc.	3/23/2012	5/8/2013
Roe 574	Francom G. Watson, Jr.	3/23/2012	5/8/2013

EXHIBIT 1

DEFAULTS ENTERED

Doe/Roe No.	Name of Roe Cross-Defendant	Default Entered	Default Posted
Roe 575	A. Watson	3/23/2012	5/8/2013
Roe 576	Wells Fargo Bank NA	3/23/2012	5/8/2013
Roe 577	Richard A. White and Valerie K. White Trust	3/23/2012	5/8/2013
Roe 578	Wood Family Trust	3/23/2012	5/8/2013
Roe 580	Yeh Vivian Hwa	3/23/2012	5/8/2013
Roe 581	Lincoln Chu Kuen Yung	3/23/2012	5/8/2013
Roe 583	American Landmark Group LLC	3/23/2012	5/8/2013
Roe 585	190 th Avenue West, LLC	3/23/2012	5/8/2013
Roe 596	Karla Bushnell	3/23/2012	5/8/2013
Roe 597	David Bushnell	3/23/2012	5/8/2013
Roe 601	Dorothy Etta Delia	3/23/2012	5/8/2013
Roe 602	John P Rusk	3/23/2012	5/8/2013
Roe 603	EPIC	3/23/2012	5/8/2013
Roe 604	Smith Development Co.	3/23/2012	5/8/2013
Roe 606	Hamid Ameri	3/23/2012	5/8/2013
Roe 607	Lutz Issleib	3/23/2012	5/8/2013
Roe 609	Erlinda Koo	3/23/2012	5/8/2013
Roe 610	Tywla Lake	3/23/2012	5/8/2013
Roe 612	Frank A Lane	3/23/2012	5/8/2013
Roe 613	High Desert Investments LLC.	3/23/2012	5/8/2013
Roe 614	Sol LeShin	3/23/2012	5/8/2013
Roe 615	Carl Proctor Jr.	3/23/2012	5/8/2013

DEFAULTS ENTERED

Doe/Roe No.	Name of Roe Cross-Defendant	Default Entered	Default Posted
Roe 616	Qwest Engineering Inc.	3/23/2012	5/8/2013
Roe 617	Retlaw Enterprises LLC	3/23/2012	5/8/2013
Roe 619	Robert A. Stoner Properties	3/23/2012	5/8/2013
Roe 620	Ronald H. Carter/Audrey M. Carter Family Trust	3/23/2012	5/8/2013
Roe 621	Clarence E Shetler	3/23/2012	5/8/2013
Roe 625	1st and 41st West LLC	3/23/2012	5/8/2013
Roe 626	20th Street Properties	3/23/2012	5/8/2013
Roe 629	Mehran Abolmoluki	3/23/2012	5/8/2013
Roe 630	Antonio Acosta	3/23/2012	5/8/2013
Roe 631	Miriam Adams	3/23/2012	5/8/2013
Roe 632	Arnold Adicoff	3/23/2012	5/8/2013
Roe 633	James Agalsoff	3/23/2012	5/8/2013
Roe 635	Carlito Aguilar	3/23/2012	5/8/2013
Roe 636	Carmen Aguilar	3/23/2012	5/8/2013
Roe 638	Valentin Aguilar	3/23/2012	5/8/2013
Roe 639	Yolanda Aguilar	3/23/2012	5/8/2013
Roe 641	Martha Akin	3/23/2012	5/8/2013
Roe 642	Jack Albright	3/23/2012	5/8/2013
Roe 644	Casey Alesso	3/23/2012	5/8/2013
Roe 645	Donald Alexander	3/23/2012	5/8/2013
Roe 647	Betty Allen	3/23/2012	5/8/2013
Roe 648	Brunette Allen	3/23/2012	5/8/2013
Roe 649	George Allen	3/23/2012	5/8/2013
Roe 650	Guadalupe Allen	3/23/2012	5/8/2013

DEFAULTS ENTERED

Doe/Roe No.	Name of Roe Cross-Defendant	Default Entered	Default Posted
Roe 651	Ronald Allen	3/23/2012	5/8/2013
Roe 652	Paul Allison	3/23/2012	5/8/2013
Roe 653	Yvonne Allison	3/23/2012	5/8/2013
Roe 654	Deborah Alluis	3/23/2012	5/8/2013
Roe 655	Jack Alluis	3/23/2012	5/8/2013
Roe 656	Mary Almarez	3/23/2012	5/8/2013
Roe 657	Jorge Alonso	3/23/2012	5/8/2013
Roe 658	Laura Alonso	3/23/2012	5/8/2013
Roe 659	ALP Equipment Sales Inc	3/23/2012	5/8/2013
Roe 660	Felipe Alvarez	3/23/2012	5/8/2013
Roe 661	Roberto Alvarez	3/23/2012	5/8/2013
Roe 663	Mary Alvidrez	3/23/2012	5/8/2013
Roe 664	Richard Alvidrez	3/23/2012	5/8/2013
Roe 666	An Van Phan Tr	3/23/2012	5/8/2013
Roe 667	Beatrice Anderson	3/23/2012	5/8/2013
Roe 670	Renee Anderson	3/23/2012	5/8/2013
Roe 671	Franklin Andrews	3/23/2012	5/8/2013
Roe 672	Treba Andrews	3/23/2012	5/8/2013
Roe 674	Sharon Annis	3/23/2012	5/8/2013
Roe 676	Antelope Valley Allied Arts Assn	3/23/2012	5/8/2013
Roe 677	Antelope Valley Florist Inc	3/23/2012	5/8/2013
Roe 684	Keiko Aoki	3/23/2012	5/8/2013
Roe 685	Jovencio Apostol	3/23/2012	5/8/2013
Roe 686	Frances Appleby	3/23/2012	5/8/2013
Roe 687	Thomas Appleby	3/23/2012	5/8/2013
Roe 689	Benedicto Arevalo	3/23/2012	5/8/2013
Roe 690	Nora Arevalo	3/23/2012	5/8/2013
Roe 693	Florence Arnold	3/23/2012	5/8/2013

DEFAULTS ENTERED

Doe/Roe No.	Name of Roe Cross-Defendant	Default Entered	Default Posted
Roe 694	Lucita Arquileta	3/23/2012	5/8/2013
Roe 695	Rufino Arquileta	3/23/2012	5/8/2013
Roe 697	Arroyo Family Trust	3/23/2012	5/8/2013
Roe 698	Patricia Artigas	3/23/2012	5/8/2013
Roe 699	Noboru Asato	3/23/2012	5/8/2013
Roe 700	Jesus Ascencio	3/23/2012	5/8/2013
Roe 701	Aliza Asher	3/23/2012	5/8/2013
Roe 702	Shaul Asher	3/23/2012	5/8/2013
Roe 705	Gerard Auyong	3/23/2012	5/8/2013
Roe 706	Jane Aveni	3/23/2012	5/8/2013
Roe 707	Lloyd Avery	3/23/2012	5/8/2013
Roe 708	Alan Avrick	3/23/2012	5/8/2013
Roe 711	Jack Baerlein	3/23/2012	5/8/2013
Roe 716	Maria Balice	3/23/2012	5/8/2013
Roe 718	Emiliano Ballesteros	3/23/2012	5/8/2013
Roe 719	Rafael Banales	3/23/2012	5/8/2013
Roe 720	Bernardo Banuelos	3/23/2012	5/8/2013
Roe 721	Rosario Banuelos	3/23/2012	5/8/2013
Roe 723	Ron Banuk	3/23/2012	5/8/2013
Roe 725	Irene Barbeau	3/23/2012	5/8/2013
Roe 726	Ann Barnes	3/23/2012	5/8/2013
Roe 727	Wayne Barnes	3/23/2012	5/8/2013

DEFAULTS ENTERED

Doe/Roe No.	Name of Roe Cross-Defendant	Default Entered	Default Posted
Roe 728	Terri Baron	3/23/2012	5/8/2013
Roe 729	Joseph Bartfay	3/23/2012	5/8/2013
Roe 730	Selma Bartfay	3/23/2012	5/8/2013
Roe 731	Basrock Woodcreek Gardens	3/23/2012	5/8/2013
Roe 733	Nancy Bauer	3/23/2012	5/8/2013
Roe 734	A Beasley	3/23/2012	5/8/2013
Roe 735	Teresa Becarra	3/23/2012	5/8/2013
Roe 737	Ikuko Becker	3/23/2012	5/8/2013
Roe 738	James Becker	3/23/2012	5/8/2013
Roe 739	Betty Bederio	3/23/2012	5/8/2013
Roe 740	Beatriz Belisario	3/23/2012	5/8/2013
Roe 741	Luis Belisario	3/23/2012	5/8/2013
Roe 742	Bell Tr	3/23/2012	5/8/2013
Roe 743	Beverly Bellanca	3/23/2012	5/8/2013
Roe 744	Cecilia Beltran	3/23/2012	5/8/2013
Roe 745	Victoria Benner	3/23/2012	5/8/2013
Roe 746	Bensky Living Trust	3/23/2012	5/8/2013
Roe 748	Nancy Benz	3/23/2012	5/8/2013
Roe 750	Gaylyn Berglund	3/23/2012	5/8/2013
Roe 751	Kenneth Berglund	3/23/2012	5/8/2013
Roe 752	Amante Bermundo	3/23/2012	5/8/2013
Roe 754	Ary Biers	3/23/2012	5/8/2013

DEFAULTS ENTERED

Doe/Roe No.	Name of Roe Cross-Defendant	Default Entered	Default Posted
Roe 755	Robert Biers	3/23/2012	5/8/2013
Roe 756	Sylvia Bigornia	3/23/2012	5/8/2013
Roe 758	Alfons Bimbiris	3/23/2012	5/8/2013
Roe 759	Vera Bimbiris	3/23/2012	5/8/2013
Roe 760	Melvin Bittner	3/23/2012	5/8/2013
Roe 763	Catherine Black	3/23/2012	5/8/2013
Roe 764	Anita Blanchard	3/23/2012	5/8/2013
Roe 767	Betty Bliley	3/23/2012	5/8/2013
Roe 768	Eugene Bliley	3/23/2012	5/8/2013
Roe 770	Jose Bocanegra	3/23/2012	5/8/2013
Roe 771	James Bodkin	3/23/2012	5/8/2013
Roe 772	Frank Bodolai	3/23/2012	5/8/2013
Roe 773	Magdalena Bodolai	3/23/2012	5/8/2013
Roe 775	Minh Bosque	3/23/2012	5/8/2013
Roe 776	Gayle Bovee	3/23/2012	5/8/2013
Roe 777	Vicki Bovee	3/23/2012	5/8/2013
Roe 778	Donna Boyer	3/23/2012	5/8/2013
Roe 781	BPP Valley Central	3/23/2012	5/8/2013
Roe 784	Bradley Family Tr	3/23/2012	5/8/2013
Roe 785	Dennis Braly	3/23/2012	5/8/2013
Roe 787	Brasel Family Tr	3/23/2012	5/8/2013
Roe 788	Flora Braun	3/23/2012	5/8/2013

EXHIBIT 1

DEFAULTS ENTERED

Doe/Roe No.	Name of Roe Cross-Defendant	Default Entered	Default Posted
Roe 789	Joe Brewer	3/23/2012	5/8/2013
Roe 794	Patricia Brooks	3/23/2012	5/8/2013
Roe 795	Mary Brosky	3/23/2012	5/8/2013
Roe 796	Vera Brown	3/23/2012	5/8/2013
Roe 797	Evelyn Bruno	3/23/2012	5/8/2013
Roe 798	Thomas Bryk	3/23/2012	5/8/2013
Roe 799	Eugene Buckley	3/23/2012	5/8/2013
Roe 800	Jeanne Buckley	3/23/2012	5/8/2013
Roe 801	Philip Bucknor	3/23/2012	5/8/2013
Roe 802	Donald Buhmann	3/23/2012	5/8/2013
Roe 803	June Buhmann	3/23/2012	5/8/2013
Roe 804	Washington Bumanglag	3/23/2012	5/8/2013
Roe 805	Walter Bunch	3/23/2012	5/8/2013
Roe 807	Karen Burgess	3/23/2012	5/8/2013
Roe 808	Randy Burgess	3/23/2012	5/8/2013
Roe 809	Raymond Burns	3/23/2012	5/8/2013
Roe 810	Doretha Burrell	3/23/2012	5/8/2013
Roe 814	Buytkus Family Trust	3/23/2012	5/8/2013
Roe 815	Daniel Byrne	3/23/2012	5/8/2013
Roe 816	David Byrne	3/23/2012	5/8/2013
Roe 820	Belva Caldwell	3/23/2012	5/8/2013
Roe 824	Marvin Calmeson	3/23/2012	5/8/2013
Roe 825	Herminia Camacho	3/23/2012	5/8/2013
Roe 826	Julian Camacho	3/23/2012	5/8/2013
Roe 827	Ricardo Camarena	3/23/2012	5/8/2013
Roe 828	Cambridge Homes, Inc.	3/23/2012	5/8/2013

EXHIBIT 1

DEFAULTS ENTERED

Doe/Roe No.	Name of Roe Cross-Defendant	Default Entered	Default Posted
Roe 829	Bonnie Cameron	3/23/2012	5/8/2013
Roe 830	James Cameron	3/23/2012	5/8/2013
Roe 832	Erika Campbell	3/23/2012	5/8/2013
Roe 837	Lynda Capel	3/23/2012	5/8/2013
Roe 839	Barbara Carey	3/23/2012	5/8/2013
Roe 840	Donald Carey	3/23/2012	5/8/2013
Roe 841	Ernest Caringi	3/23/2012	5/8/2013
Roe 842	Violet Carlisle	3/23/2012	5/8/2013
Roe 843	Timothy Carney	3/23/2012	5/8/2013
Roe 844	Rosendo Carranza	3/23/2012	5/8/2013
Roe 847	Toribio Carrasco	3/23/2012	5/8/2013
Roe 848	Irene Carroll	3/23/2012	5/8/2013
Roe 849	James Carroll	3/23/2012	5/8/2013
Roe 850	Bera Carruthers	3/23/2012	5/8/2013
Roe 851	James B Caskey	3/23/2012	5/8/2013
Roe 852	Ruby J Caskey	3/23/2012	5/8/2013
Roe 853	Eugenia Carter	3/23/2012	5/8/2013
Roe 855	Terry Carter	3/23/2012	5/8/2013
Roe 856	Gary Castelan	3/23/2012	5/8/2013
Roe 857	Sharon Castelan	3/23/2012	5/8/2013
Roe 861	Jose Castillo	3/23/2012	5/8/2013
Roe 862	Remedios Castillo	3/23/2012	5/8/2013
Roe 864	Robert & Norma Caudle	3/23/2012	5/8/2013
Roe 865	Aurelia Cayetano	3/23/2012	5/8/2013

EXHIBIT 1

DEFAULTS ENTERED

Doe/Roe No.	Name of Roe Cross-Defendant	Default Entered	Default Posted
Roe 866	Edgardo Cayetano	3/23/2012	5/8/2013
Roe 867	Julia Cecil	3/23/2012	5/8/2013
Roe 868	Ken Cecil	3/23/2012	5/8/2013
Roe 869	Gilbert Cenicerros	3/23/2012	5/8/2013
Roe 870	Edward Cernicky	3/23/2012	5/8/2013
Roe 871	Florence Cernicky	3/23/2012	5/8/2013
Roe 872	Marc Chachuat	3/23/2012	5/8/2013
Roe 873	Sukhdev Chahal	3/23/2012	5/8/2013
Roe 877	Siu Chan	3/23/2012	5/8/2013
Roe 878	Beverly Chandler	3/23/2012	5/8/2013
Roe 879	Burton Chandler	3/23/2012	5/8/2013
Roe 881	Py Chao	3/23/2012	5/8/2013
Roe 883	Christopher Cheung	3/23/2012	5/8/2013
Roe 886	Hu Chi Yu	3/23/2012	5/8/2013
Roe 887	Chou Chiang	3/23/2012	5/8/2013
Roe 888	Tim Chiu	3/23/2012	5/8/2013
Roe 889	Mi Choe	3/23/2012	5/8/2013
Roe 890	Pyong Choe	3/23/2012	5/8/2013
Roe 891	Kenneth Choi	3/23/2012	5/8/2013
Roe 892	Edwin Chong	3/23/2012	5/8/2013
Roe 894	Boniface Choy	3/23/2012	5/8/2013
Roe 898	John Christie	3/23/2012	5/8/2013
Roe 900	Ardathe Christopher	3/23/2012	5/8/2013
Roe 901	Daphne Chu	3/23/2012	5/8/2013

DEFAULTS ENTERED

Doe/Roe No.	Name of Roe Cross-Defendant	Default Entered	Default Posted
Roe 905	Fred Chung	3/23/2012	5/8/2013
Roe 906	Gabrielle Chung	3/23/2012	5/8/2013
Roe 907	John Cinfio	3/23/2012	5/8/2013
Roe 908	James Cipollone	3/23/2012	5/8/2013
Roe 909	Richard Clark	3/23/2012	5/8/2013
Roe 911	Russell Clawson	3/23/2012	5/8/2013
Roe 912	Gail Clutter	3/23/2012	5/8/2013
Roe 913	Ralph Clutter	3/23/2012	5/8/2013
Roe 914	Lap Co	3/23/2012	5/8/2013
Roe 916	Marc Cole	3/23/2012	5/8/2013
Roe 918	William Collicutt	3/23/2012	5/8/2013
Roe 919	Beatrice Collins	3/23/2012	5/8/2013
Roe 921	Charles Colton	3/23/2012	5/8/2013
Roe 922	Larry Connelly	3/23/2012	5/8/2013
Roe 923	Leo Connelly	3/23/2012	5/8/2013
Roe 925	Alan Cook	3/23/2012	5/8/2013
Roe 926	Regina Cooley	3/23/2012	5/8/2013
Roe 927	Denise Cope	3/23/2012	5/8/2013
Roe 928	Thomas Cope	3/23/2012	5/8/2013
Roe 929	Ruby Corder	3/23/2012	5/8/2013
Roe 930	Alfredo Corrales	3/23/2012	5/8/2013
Roe 932	Calvin Cox	3/23/2012	5/8/2013

DEFAULTS ENTERED

Doe/Roe No.	Name of Roe Cross-Defendant	Default Entered	Default Posted
Roe 935	Ronald Cronk	3/23/2012	5/8/2013
Roe 937	Cora Cruz	3/23/2012	5/8/2013
Roe 938	Felina Cruz	3/23/2012	5/8/2013
Roe 939	Nicasio Cruz	3/23/2012	5/8/2013
Roe 940	Roger Cruz	3/23/2012	5/8/2013
Roe 941	Mike Culha	3/23/2012	5/8/2013
Roe 944	Florin D Souza	3/23/2012	5/8/2013
Roe 945	Anita Dacles	3/23/2012	5/8/2013
Roe 946	Simplicio Dacles	3/23/2012	5/8/2013
Roe 949	Helga Dalley	3/23/2012	5/8/2013
Roe 950	Manfred Dalley	3/23/2012	5/8/2013
Roe 956	Mohammad Daood	3/23/2012	5/8/2013
Roe 957	Saleem Daood	3/23/2012	5/8/2013
Roe 958	Adib Daoud	3/23/2012	5/8/2013
Roe 959	Donna Daugherty	3/23/2012	5/8/2013
Roe 960	Anita Davalos	3/23/2012	5/8/2013
Roe 961	Dominador Davalos	3/23/2012	5/8/2013
Roe 962	Alfred David	3/23/2012	5/8/2013
Roe 965	Douglas Davis	3/23/2012	5/8/2013
Roe 966	James Davis	3/23/2012	5/8/2013
Roe 968	Davis Sibs Inc	3/23/2012	5/8/2013
Roe 977	Sefey Debotoun	3/23/2012	5/8/2013
Roe 978	Angelito Dedios	3/23/2012	5/8/2013
Roe 979	Bruno Deluca	3/23/2012	5/8/2013
Roe 981	Olin Derrick	3/23/2012	5/8/2013

EXHIBIT 1

DEFAULTS ENTERED

Doe/Roe No.	Name of Roe Cross-Defendant	Default Entered	Default Posted
Roe 982	Deneen Deschene	3/23/2012	5/8/2013
Roe 983	Desert Lake L P	3/23/2012	5/8/2013
Roe 984	Juan Diaz	3/23/2012	5/8/2013
Roe 987	Gary Dicks	3/23/2012	5/8/2013
Roe 988	Nick Digiulio	3/23/2012	5/8/2013
Roe 989	Richard Dioli	3/23/2012	5/8/2013
Roe 990	Lonzo Dixon	3/23/2012	5/8/2013
Roe 991	Mae Dixon	3/23/2012	5/8/2013
Roe 992	Adelaida Dizon	3/23/2012	5/8/2013
Roe 994	Esteban Donis	3/23/2012	5/8/2013
Roe 995	Mauro Donis	3/23/2012	5/8/2013
Roe 996	Rosalina Donis	3/23/2012	5/8/2013
Roe 997	Virginia Donis	3/23/2012	5/8/2013
Roe 999	Michael Douglas	3/23/2012	5/8/2013
Roe 1000	Katherine Douglass	3/23/2012	5/8/2013
Roe 1001	Borom Douk	3/23/2012	5/8/2013
Roe 1002	S&B Douk	3/23/2012	5/8/2013
Roe 1003	Sokhom Douk	3/23/2012	5/8/2013
Roe 1004	James Downing	3/23/2012	5/8/2013
Roe 1005	Gary Downs	3/23/2012	5/8/2013
Roe 1006	Romnia Drever	3/23/2012	5/8/2013
Roe 1009	Eliseo Dumbrique	3/23/2012	5/8/2013
Roe 1010	Cynthia Dunlop	3/23/2012	5/8/2013
Roe 1011	James Dunn	3/23/2012	5/8/2013
Roe 1012	Raymond Dunning	3/23/2012	5/8/2013
Roe 1013	Loc Duong	3/23/2012	5/8/2013
Roe 1014	Harold Dykstra	3/23/2012	5/8/2013

DEFAULTS ENTERED

Doe/Roe No.	Name of Roe Cross-Defendant	Default Entered	Default Posted
Roe 1015	Teresa Dykstra	3/23/2012	5/8/2013
Roe 1016	Wilbur Dykstra	3/23/2012	5/8/2013
Roe 1017	Dykstra Family Trust	3/23/2012	5/8/2013
Roe 1018	E I C Group et al	3/23/2012	5/8/2013
Roe 1019	Dorothy Earl	3/23/2012	5/8/2013
Roe 1020	Jack Earl	3/23/2012	5/8/2013
Roe 1021	David Earwood	3/23/2012	5/8/2013
Roe 1022	Benjamin Easter	3/23/2012	5/8/2013
Roe 1023	Joanne Ebert	3/23/2012	5/8/2013
Roe 1024	David Eckberg	3/23/2012	5/8/2013
Roe 1025	Paula Eckberg	3/23/2012	5/8/2013
Roe 1026	Dale Eckles	3/23/2012	5/8/2013
Roe 1027	Jean Economou	3/23/2012	5/8/2013
Roe 1028	John Edmonds	3/23/2012	5/8/2013
Roe 1034	Theodore Elness	3/23/2012	5/8/2013
Roe 1035	Rosa Elumba	3/23/2012	5/8/2013
Roe 1036	Zenaida Emms	3/23/2012	5/8/2013
Roe 1037	Rosario Empert	3/23/2012	5/8/2013
Roe 1039	Lorin Ensminger	3/23/2012	5/8/2013
Roe 1040	Catherine Erazim	3/23/2012	5/8/2013
Roe 1041	Catherine Erazim	3/23/2012	5/8/2013
Roe 1043	John Escobar	3/23/2012	5/8/2013
Roe 1044	Rose Esparza	3/23/2012	5/8/2013

EXHIBIT 1

DEFAULTS ENTERED

Doe/Roe No.	Name of Roe Cross-Defendant	Default Entered	Default Posted
Roe 1045	Filomena Espiritu	3/23/2012	5/8/2013
Roe 1046	William Espiritu	3/23/2012	5/8/2013
Roe 1047	Basilio Esquivel	3/23/2012	5/8/2013
Roe 1048	Irma Koburn as Beneficiary of the Estate of Zelda C Schliske Decd	3/23/2012	5/8/2013
Roe 1049	Edelmira Estrada	3/23/2012	5/8/2013
Roe 1050	Hervi Estrada	3/23/2012	5/8/2013
Roe 1053	Carl Fabrizio	3/23/2012	5/8/2013
Roe 1054	Fairview Development LLC	3/23/2012	5/8/2013
Roe 1058	Richard Faria	3/23/2012	5/8/2013
Roe 1060	Deborah Feliciano	3/23/2012	5/8/2013
Roe 1061	Denese Felts	3/23/2012	5/8/2013
Roe 1062	Douglas Felts	3/23/2012	5/8/2013
Roe 1068	Ruth Fike	3/23/2012	5/8/2013
Roe 1069	Claudia Finkel	3/23/2012	5/8/2013
Roe 1071	Mary Fiorito	3/23/2012	5/8/2013
Roe 1073	Joanne Fletcher	3/23/2012	5/8/2013
Roe 1074	Gayle Flores	3/23/2012	5/8/2013
Roe 1075	Maria Flores	3/23/2012	5/8/2013
Roe 1077	Herbert Floyd	3/23/2012	5/8/2013
Roe 1078	Larry Fogleman	3/23/2012	5/8/2013
Roe 1079	Alejandro Fontillas	3/23/2012	5/8/2013
Roe 1080	John Ford	3/23/2012	5/8/2013

DEFAULTS ENTERED

Doe/Roe No.	Name of Roe Cross-Defendant	Default Entered	Default Posted
Roe 1082	Antonia Fowler	3/23/2012	5/8/2013
Roe 1084	Kevin Frane	3/23/2012	5/8/2013
Roe 1085	Laurel Frane	3/23/2012	5/8/2013
Roe 1086	Stephenie Fredrick	3/23/2012	5/8/2013
Roe 1087	Esther Friedman	3/23/2012	5/8/2013
Roe 1088	Joanne Fu	3/23/2012	5/8/2013
Roe 1089	Yoshi Fujisawa	3/23/2012	5/8/2013
Roe 1090	Michi Fukumoto	3/23/2012	5/8/2013
Roe 1093	Jeff Galieti	3/23/2012	5/8/2013
Roe 1094	Jose Galvez	3/23/2012	5/8/2013
Roe 1095	Betty Gambone	3/23/2012	5/8/2013
Roe 1099	Martha Garcia	3/23/2012	5/8/2013
Roe 1101	Rodolfo Garcia	3/23/2012	5/8/2013
Roe 1103	Eduardo Garde	3/23/2012	5/8/2013
Roe 1104	Russellend Garde	3/23/2012	5/8/2013
Roe 1105	Garde Fmly Rev Tr	3/23/2012	5/8/2013
Roe 1107	Hung Gee	3/23/2012	5/8/2013
Roe 1111	Stefan Ghika Budesti	3/23/2012	5/8/2013
Roe 1112	Paul Giang	3/23/2012	5/8/2013
Roe 1114	Gibraltar Homes LLC	3/23/2012	5/8/2013
Roe 1116	George Gillingham	3/23/2012	5/8/2013
Roe 1117	Gisele Schroeder Liv Tr	3/23/2012	5/8/2013
Roe 1118	Drena Glauser	3/23/2012	5/8/2013

DEFAULTS ENTERED

Doe/Roe No.	Name of Roe Cross-Defendant	Default Entered	Default Posted
Roe 1119	Gary Glenn	3/23/2012	5/8/2013
Roe 1120	Paul Glessner	3/23/2012	5/8/2013
Roe 1122	Benito Gonzales	3/23/2012	5/8/2013
Roe 1123	Erminio Gonzales	3/23/2012	5/8/2013
Roe 1125	Quach Gonzales	3/23/2012	5/8/2013
Roe 1126	Carlos Conzalez (name should be spelled "Gonzalez")	3/23/2012	5/8/2013
Roe 1127	Frances Gonzalez	3/23/2012	5/8/2013
Roe 1128	Gloria Gonzalez	3/23/2012	5/8/2013
Roe 1130	Roque Gonzalez	3/23/2012	5/8/2013
Roe 1131	Tina Gonzalez	3/23/2012	5/8/2013
Roe 1135	Vicente Gose	3/23/2012	5/8/2013
Roe 1136	Christina Goya	3/23/2012	5/8/2013
Roe 1142	William Grant	3/23/2012	5/8/2013
Roe 1144	Barbara Green	3/23/2012	5/8/2013
Roe 1145	Hilda Green	3/23/2012	5/8/2013
Roe 1147	Donna Greenman	3/23/2012	5/8/2013
Roe 1148	Pierre Grember	3/23/2012	5/8/2013
Roe 1150	John Griffin	3/23/2012	5/8/2013
Roe 1154	Gerald Groff	3/23/2012	5/8/2013
Roe 1155	Marian Groff	3/23/2012	5/8/2013
Roe 1156	Lillian Groom	3/23/2012	5/8/2013
Roe 1158	Marge Groven	3/23/2012	5/8/2013
Roe 1159	Lucena Guiang	3/23/2012	5/8/2013
Roe 1160	Cristoval Guillen	3/23/2012	5/8/2013
Roe 1162	Alvaro Gutierrez	3/23/2012	5/8/2013

EXHIBIT 1

DEFAULTS ENTERED

Doe/Roe No.	Name of Roe Cross-Defendant	Default Entered	Default Posted
Roe 1164	Santos Gutierrez	3/23/2012	5/8/2013
Roe 1165	Socorro Gutierrez	3/23/2012	5/8/2013
Roe 1166	Ovidio Guzman	3/23/2012	5/8/2013
Roe 1167	Jin Ha	3/23/2012	5/8/2013
Roe 1168	Young Ha	3/23/2012	5/8/2013
Roe 1170	Susan Hahn	3/23/2012	5/8/2013
Roe 1171	Homa Hamidi	3/23/2012	5/8/2013
Roe 1172	Carrie Hamson	3/23/2012	5/8/2013
Roe 1173	David Hamson	3/23/2012	5/8/2013
Roe 1174	Dean Hanano	3/23/2012	5/8/2013
Roe 1175	James Hanlon	3/23/2012	5/8/2013
Roe 1176	James Hanlon	3/23/2012	5/8/2013
Roe 1177	Harald Hansen	3/23/2012	5/8/2013
Roe 1178	Christine Hanson	3/23/2012	5/8/2013
Roe 1180	Willis Hard	3/23/2012	5/8/2013
Roe 1181	Joseph Harnik	3/23/2012	5/8/2013
Roe 1182	David Harper	3/23/2012	5/8/2013
Roe 1183	Diane Harris	3/23/2012	5/8/2013
Roe 1184	James Harris	3/23/2012	5/8/2013
Roe 1185	Karen Harris	3/23/2012	5/8/2013
Roe 1186	Karen Hart	3/23/2012	5/8/2013
Roe 1187	Harvell Family Tr	3/23/2012	5/8/2013
Roe 1188	Gary Hathaway	3/23/2012	5/8/2013
Roe 1190	Donald Haydon	3/23/2012	5/8/2013
Roe 1191	Fusako Hazama	3/23/2012	5/8/2013
Roe 1192	Hideo Hazama	3/23/2012	5/8/2013
Roe 1193	Alice Heggen	3/23/2012	5/8/2013
Roe 1197	Corine Henninger	3/23/2012	5/8/2013
Roe 1198	Antonio Hernandez	3/23/2012	5/8/2013
Roe 1199	Carol Herr	3/23/2012	5/8/2013

DEFAULTS ENTERED

Doe/Roe No.	Name of Roe Cross-Defendant	Default Entered	Default Posted
Roe 1200	Ronald Hetzner	3/23/2012	5/8/2013
Roe 1201	Geraldine Heynen	3/23/2012	5/8/2013
Roe 1202	HGJ LLC	3/23/2012	5/8/2013
Roe 1207	Eric Hillerman	3/23/2012	5/8/2013
Roe 1208	Marilyn Hinck	3/23/2012	5/8/2013
Roe 1212	Thong Ho	3/23/2012	5/8/2013
Roe 1214	Albert Hobayan	3/23/2012	5/8/2013
Roe 1215	Violeta Hobayan	3/23/2012	5/8/2013
Roe 1216	Paul Hodges	3/23/2012	5/8/2013
Roe 1217	Debra Hodsdon	3/23/2012	5/8/2013
Roe 1218	Steve Hodsdon	3/23/2012	5/8/2013
Roe 1219	Wilbert E. Decd Est of Hoffman	3/23/2012	5/8/2013
Roe 1220	Soledad Holguin	3/23/2012	5/8/2013
Roe 1221	Clarissia Holland	3/23/2012	5/8/2013
Roe 1225	Linda Homan	3/23/2012	5/8/2013
Roe 1226	Mathew Homan	3/23/2012	5/8/2013
Roe 1227	Che Hong	3/23/2012	5/8/2013
Roe 1229	Khai Hong	3/23/2012	5/8/2013
Roe 1231	Tony Hong	3/23/2012	5/8/2013
Roe 1232	Martha Hooper	3/23/2012	5/8/2013
Roe 1233	Gary Hoover	3/23/2012	5/8/2013
Roe 1234	Marilyn Hoover	3/23/2012	5/8/2013

DEFAULTS ENTERED

Doe/Roe No.	Name of Roe Cross-Defendant	Default Entered	Default Posted
Roe 1235	J Hopper	3/23/2012	5/8/2013
Roe 1240	William Hoskins	3/23/2012	5/8/2013
Roe 1243	Janette Hourani	3/23/2012	5/8/2013
Roe 1244	Leslie Howe	3/23/2012	5/8/2013
Roe 1245	Hsiaoni Chang	3/23/2012	5/8/2013
Roe 1247	Marie Hubbard	3/23/2012	5/8/2013
Roe 1248	Cresencio Huerta	3/23/2012	5/8/2013
Roe 1249	Romeo Hughes	3/23/2012	5/8/2013
Roe 1252	Robert Hunt	3/23/2012	5/8/2013
Roe 1256	Amy Hwang	3/23/2012	5/8/2013
Roe 1258	Hyun Chul Lee	3/23/2012	5/8/2013
Roe 1259	Kiyoshi Ige	3/23/2012	5/8/2013
Roe 1260	Isidro Ignacio	3/23/2012	5/8/2013
Roe 1262	Veronica Ingersoll	3/23/2012	5/8/2013
Roe 1263	Martin Ingram	3/23/2012	5/8/2013
Roe 1265	Pasquale Ioele	3/23/2012	5/8/2013
Roe 1266	Joy Irish	3/23/2012	5/8/2013
Roe 1267	Robert Irish	3/23/2012	5/8/2013
Roe 1271	Fukuyo Twamoto	3/23/2012	5/8/2013
Roe 1274	Dietra Jackson	3/23/2012	5/8/2013
Roe 1276	Arnold Jacobsen	3/23/2012	5/8/2013
Roe 1277	Jagatri L and Xantha Dhawan	3/23/2012	5/8/2013

DEFAULTS ENTERED

Doe/Roe No.	Name of Roe Cross-Defendant	Default Entered	Default Posted
Roe 1278	Richard James	3/23/2012	5/8/2013
Roe 1279	David Jauregui	3/23/2012	5/8/2013
Roe 1280	Isaura Jauregui	3/23/2012	5/8/2013
Roe 1283	Enid Jeffrey	3/23/2012	5/8/2013
Roe 1286	Bobby Jennings	3/23/2012	5/8/2013
Roe 1287	Patricia Jennings	3/23/2012	5/8/2013
Roe 1289	Enrique Jimenez	3/23/2012	5/8/2013
Roe 1291	Henry Johnson	3/23/2012	5/8/2013
Roe 1294	Betty Jones	3/23/2012	5/8/2013
Roe 1295	Christine Jones	3/23/2012	5/8/2013
Roe 1296	David Jones	3/23/2012	5/8/2013
Roe 1297	Esther Jones	3/23/2012	5/8/2013
Roe 1298	Harold Jones	3/23/2012	5/8/2013
Roe 1301	Morton Juhl	3/23/2012	5/8/2013
Roe 1302	K A Investment Co LLC	3/23/2012	5/8/2013
Roe 1303	Isako Kagehiro	3/23/2012	5/8/2013
Roe 1304	Kenichi Kagehiro	3/23/2012	5/8/2013
Roe 1305	Mitsue Kanamori	3/23/2012	5/8/2013
Roe 1307	Katsuko Kariya	3/23/2012	5/8/2013
Roe 1308	Katsumi Kariya	3/23/2012	5/8/2013
Roe 1309	Nicholas Karthas	3/23/2012	5/8/2013
Roe 1310	Colleen Kasper	3/23/2012	5/8/2013
Roe 1311	Gordon Katsion	3/23/2012	5/8/2013
Roe 1312	Kaufler Trust	3/23/2012	

DEFAULTS ENTERED

Doe/Roe No.	Name of Roe Cross-Defendant	Default Entered	Default Posted
Roe 1313	Wayne Kawamoto	3/23/2012	5/8/2013
Roe 1314	Nancy Kawamura	3/23/2012	5/8/2013
Roe 1315	Yasuko Kawamura	3/23/2012	5/8/2013
Roe 1316	Keast Fmly Tr	3/23/2012	5/8/2013
Roe 1317	Keck Fmly Tr	3/23/2012	5/8/2013
Roe 1319	Arpineh Keklikian	3/23/2012	5/8/2013
Roe 1320	Missak Keklikian	3/23/2012	5/8/2013
Roe 1321	Marie Kendrick	3/23/2012	5/8/2013
Roe 1324	Joel Kettenring	3/23/2012	5/8/2013
Roe 1325	Pauline Kettenring	3/23/2012	5/8/2013
Roe 1326	Harriet Kettles	3/23/2012	5/8/2013
Roe 1327	Sandra Key	3/23/2012	5/8/2013
Roe 1331	Fadi Khater	3/23/2012	5/8/2013
Roe 1332	Lorna Kila	3/23/2012	5/8/2013
Roe 1334	Soo Kim	3/23/2012	5/8/2013
Roe 1337	Carol Kinat	3/23/2012	5/8/2013
Roe 1338	Chun King	3/23/2012	5/8/2013
Roe 1339	William King	3/23/2012	5/8/2013
Roe 1341	Freda Kirkland	3/23/2012	5/8/2013
Roe 1345	Howard Klekar	3/23/2012	5/8/2013
Roe 1346	Frank Klojda	3/23/2012	5/8/2013
Roe 1348	Irene Knapp	3/23/2012	5/8/2013
Roe 1349	Kobayashi Family Trust	3/23/2012	5/8/2013
Roe 1351	Josephine Kollar	3/23/2012	5/8/2013
Roe 1352	William Kookan	3/23/2012	5/8/2013

DEFAULTS ENTERED

Doe/Roe No.	Name of Roe Cross-Defendant	Default Entered	Default Posted
Roe 1353	John Kostszewa	3/23/2012	5/8/2013
Roe 1354	Marlene Kostszewa	3/23/2012	5/8/2013
Roe 1356	Pamela Kousen	3/23/2012	5/8/2013
Roe 1358	Robert Kramer	3/23/2012	5/8/2013
Roe 1359	David Ku	3/23/2012	5/8/2013
Roe 1360	Sou Ku	3/23/2012	5/8/2013
Roe 1362	Terry Kuchta	3/23/2012	5/8/2013
Roe 1363	Seishi Kumagai	3/23/2012	5/8/2013
Roe 1364	Wei Kung	3/23/2012	5/8/2013
Roe 1366	Julia Kyle	3/23/2012	5/8/2013
Roe 1367	Jean La Porte	3/23/2012	5/8/2013
Roe 1368	Lilia Laguerta	3/23/2012	5/8/2013
Roe 1369	Deloris Lambert	3/23/2012	5/8/2013
Roe 1370	Nancy Lambert	3/23/2012	5/8/2013
Roe 1371	Lancaster Blvd	3/23/2012	5/8/2013
Roe 1372	Lancaster Blvd and 42nd St West	3/23/2012	5/8/2013
Roe 1373	Lancaster New Horizons	3/23/2012	5/8/2013
Roe 1374	Pearl Landau	3/23/2012	5/8/2013
Roe 1375	William Landau	3/23/2012	5/8/2013
Roe 1376	Jesus Landeverde	3/23/2012	5/8/2013
Roe 1378	Roberto Landeros	3/23/2012	5/8/2013
Roe 1382	William Lanier	3/23/2012	5/8/2013
Roe 1383	Ann Lanktree	3/23/2012	5/8/2013
Roe 1386	Bonnie Large	3/23/2012	5/8/2013
Roe 1387	Robert Large	3/23/2012	5/8/2013
Roe 1388	Samson Larranaga	3/23/2012	5/8/2013
Roe 1390	Alton Law	3/23/2012	5/8/2013
Roe 1391	Michael Lawrence	3/23/2012	5/8/2013
Roe 1392	Louie Laymance	3/23/2012	5/8/2013
Roe 1395	Conrado Lazo	3/23/2012	5/8/2013

EXHIBIT 1

DEFAULTS ENTERED

Doe/Roe No.	Name of Roe Cross-Defendant	Default Entered	Default Posted
Roe 1398	Loi Le	3/23/2012	5/8/2013
Roe 1400	Suong Le	3/23/2012	5/8/2013
Roe 1401	Yen Le	3/23/2012	5/8/2013
Roe 1402	Cornelius Leary	3/23/2012	5/8/2013
Roe 1404	Margaret Lebrecht	3/23/2012	5/8/2013
Roe 1405	Chi Lee	3/23/2012	5/8/2013
Roe 1406	Delano Lee	3/23/2012	5/8/2013
Roe 1407	Jim Lee	3/23/2012	5/8/2013
Roe 1408	Mai Lee	3/23/2012	5/8/2013
Roe 1409	Ting Lee	3/23/2012	5/8/2013
Roe 1412	Aurelia Legaspi	3/23/2012	5/8/2013
Roe 1413	Felimon Legaspi	3/23/2012	5/8/2013
Roe 1415	Leighton Leno	3/23/2012	5/8/2013
Roe 1416	Nancy Leno	3/23/2012	5/8/2013
Roe 1418	Mariane Lesiak	3/23/2012	5/8/2013
Roe 1419	Max Lesiak	3/23/2012	5/8/2013
Roe 1420	Ramie Leung	3/23/2012	5/8/2013
Roe 1425	Rudolfo Libed	3/23/2012	5/8/2013
Roe 1426	Lien Family Survivors Trust	3/23/2012	5/8/2013
Roe 1427	Michael Liggett	3/23/2012	5/8/2013
Roe 1428	Camila Lim	3/23/2012	5/8/2013
Roe 1429	Leonore Limos	3/23/2012	5/8/2013
Roe 1430	Tachung Lin	3/23/2012	5/8/2013
Roe 1431	Donald Linde	3/23/2012	5/8/2013

DEFAULTS ENTERED

Doe/Roe No.	Name of Roe Cross-Defendant	Default Entered	Default Posted
Roe 1432	Ling Ling Fang	3/23/2012	5/8/2013
Roe 1433	Lilla Liong	3/23/2012	5/8/2013
Roe 1434	Chih Liu	3/23/2012	5/8/2013
Roe 1435	Suh Liu	3/23/2012	5/8/2013
Roe 1436	Shirley Lizotte	3/23/2012	5/8/2013
Roe 1437	Edith Llanda	3/23/2012	5/8/2013
Roe 1438	Lloyd F Avery Tr	3/23/2012	5/8/2013
Roe 1441	Carmelita Locsin	3/23/2012	5/8/2013
Roe 1442	Hilario Locsin	3/23/2012	5/8/2013
Roe 1443	Mary Logue	3/23/2012	5/8/2013
Roe 1444	Thanh Loi	3/23/2012	5/8/2013
Roe 1445	Lola R Johnson Trust	3/23/2012	5/8/2013
Roe 1446	Lombardo Fmly Rev Liv Tr	3/23/2012	5/8/2013
Roe 1448	Thomas Lopac	3/23/2012	5/8/2013
Roe 1449	Mark Lopez	3/23/2012	5/8/2013
Roe 1450	Olivia Lopez	3/23/2012	5/8/2013
Roe 1451	Victor Lopez	3/23/2012	
Roe 1452	Bernard Los Banos	3/23/2012	
Roe 1455	Charles Lowery	3/23/2012	
Roe 1458	Eva Lubbers	3/23/2012	
Roe 1459	Robert Lucero	3/23/2012	5/8/2013
Roe 1460	Maria Ludovico	3/23/2012	5/8/2013

DEFAULTS ENTERED

Doe/Roe No.	Name of Roe Cross-Defendant	Default Entered	Default Posted
Roe 1461	Mike Ly	3/23/2012	5/8/2013
Roe 1462	Patricia Lynch	3/23/2012	
Roe 1464	Christi Lyons	3/23/2012	
Roe 1465	John Lyons	3/23/2012	
Roe 1466	M14 Development LLC	3/23/2012	
Roe 1467	Bernadette Macadaeg	3/23/2012	
Roe 1468	Jeanenne Mace	3/23/2012	5/8/2013
Roe 1469	Mark Mace	3/23/2012	5/8/2013
Roe 1470	Antonio Macias	3/23/2012	
Roe 1471	Benjamin Macias	3/23/2012	5/8/2013
Roe 1472	Martina Macias	3/23/2012	
Roe 1473	James Mackel	3/23/2012	5/8/2013
Roe 1474	Antonio Madrigal	3/23/2012	
Roe 1475	Cecilia Magalona	3/23/2012	
Roe 1476	Pale Mageo	3/23/2012	
Roe 1477	Patrocinio Maglaya	3/23/2012	
Roe 1478	Robert Magliano	3/23/2012	
Roe 1479	Rosalin Magliano	3/23/2012	

DEFAULTS ENTERED

Doe/Roe No.	Name of Roe Cross-Defendant	Default Entered	Default Posted
Roe 1480	Rolado Magtaas	3/23/2012	
Roe 1482	Vanna Mak	3/23/2012	
Roe 1483	Angela Malay	3/23/2012	
Roe 1484	Narciso Malit	3/23/2012	5/8/2013
Roe 1485	Lorie Manay	3/23/2012	
Roe 1486	Luzviminda Mandac	3/23/2012	
Roe 1487	David Manery	3/23/2012	
Roe 1488	Carol Mannino	3/23/2012	
Roe 1489	Charito Manuel	3/23/2012	
Roe 1492	Charles Manzo	3/23/2012	5/8/2013
Roe 1493	Rudolph Maravich	3/23/2012	5/8/2013
Roe 1494	Maree J De Lano Tr.	3/23/2012	5/8/2013
Roe 1496	Helen Marotta	3/23/2012	5/8/2013
Roe 1497	Alfredo Marquez	3/23/2012	5/8/2013
Roe 1498	Manuela Marquez	3/23/2012	5/8/2013
Roe 1501	Mary Marsh	3/23/2012	5/8/2013
Roe 1503	Byrn Marshall	3/23/2012	5/8/2013
Roe 1506	Alma Martin	3/23/2012	5/8/2013
Roe 1507	Arthur Martin	3/23/2012	5/8/2013
Roe 1508	Barbara Martin	3/23/2012	5/8/2013
Roe 1509	Thomas Martin	3/23/2012	5/8/2013
Roe 1510	Francisco Martinez	3/23/2012	5/8/2013

DEFAULTS ENTERED

Doe/Roe No.	Name of Roe Cross-Defendant	Default Entered	Default Posted
Roe 1512	Jesus Martinez	3/23/2012	5/8/2013
Roe 1514	Maria Martinez	3/23/2012	5/8/2013
Roe 1515	Robert Martinez	3/23/2012	5/8/2013
Roe 1523	Mildred Mason	3/23/2012	5/8/2013
Roe 1524	Donald Masters	3/23/2012	5/8/2013
Roe 1526	Rosario Mata	3/23/2012	5/8/2013
Roe 1528	Sumiko Matsushima	3/23/2012	5/8/2013
Roe 1529	Fulton Matthews	3/23/2012	5/8/2013
Roe 1530	Matthew Maurice	3/23/2012	5/8/2013
Roe 1531	Shirley Maxilom	3/23/2012	5/8/2013
Roe 1532	Catherine Maxwell	3/23/2012	5/8/2013
Roe 1535	Gustauo Mazariegos	3/23/2012	5/8/2013
Roe 1536	Linda Mazariegos	3/23/2012	5/8/2013
Roe 1539	Raymond Mc Kay	3/23/2012	5/8/2013
Roe 1540	B Mc Laren	3/23/2012	5/8/2013
Roe 1541	Brian Mc Laughlin	3/23/2012	5/8/2013
Roe 1542	Rae McAllister	3/23/2012	5/8/2013
Roe 1543	Julienne McCalman	3/23/2012	5/8/2013
Roe 1544	Walter McCalman	3/23/2012	5/8/2013
Roe 1545	Loreta McClain	3/23/2012	5/8/2013
Roe 1546	Susan McCline	3/23/2012	5/8/2013
Roe 1547	Donan McClung	3/23/2012	5/8/2013
Roe 1548	Frederick McCool	3/23/2012	5/8/2013

DEFAULTS ENTERED

Doe/Roe No.	Name of Roe Cross-Defendant	Default Entered	Default Posted
Roe 1549	Rita McCool	3/23/2012	5/8/2013
Roe 1550	Jerrie McDowell	3/23/2012	5/8/2013
Roe 1551	Patty McGahan	3/23/2012	5/8/2013
Roe 1553	Edwin McNinch	3/23/2012	5/8/2013
Roe 1554	Margaret McNinch	3/23/2012	5/8/2013
Roe 1557	Julian Medina	3/23/2012	5/8/2013
Roe 1558	Juana Mejia	3/23/2012	5/8/2013
Roe 1559	Leonard Mellow	3/23/2012	5/8/2013
Roe 1560	Alfredo Mendoza	3/23/2012	5/8/2013
Roe 1561	Cuauhtemoc Mendoza	3/23/2012	5/8/2013
Roe 1563	Herminia Messier	3/23/2012	5/8/2013
Roe 1564	Leonard Messier	3/23/2012	5/8/2013
Roe 1565	David Meyer	3/23/2012	5/8/2013
Roe 1566	Lisa Meyer	3/23/2012	5/8/2013
Roe 1567	Meyer Crest Ltd	3/23/2012	5/8/2013
Roe 1568	Meyer Crest Ltr	3/23/2012	5/8/2013
Roe 1571	Hisao Mihara	3/23/2012	5/8/2013
Roe 1572	Molly Mikel	3/23/2012	5/8/2013
Roe 1573	Sam Mikel	3/23/2012	5/8/2013
Roe 1575	Linda Miller	3/23/2012	5/8/2013
Roe 1576	Nancy Miller	3/23/2012	5/8/2013

EXHIBIT 1

DEFAULTS ENTERED

Doe/Roe No.	Name of Roe Cross-Defendant	Default Entered	Default Posted
Roe 1577	Raymond Miller	3/23/2012	5/8/2013
Roe 1578	Richard Miller	3/23/2012	5/8/2013
Roe 1579	Steven Miller	3/23/2012	5/8/2013
Roe 1583	Lieu Minh	3/23/2012	5/8/2013
Roe 1584	Van Minh	3/23/2012	5/8/2013
Roe 1585	Salvador Miranda	3/23/2012	5/8/2013
Roe 1586	Morteza Mirkazemi	3/23/2012	5/8/2013
Roe 1587	Susan Mirkazemi	3/23/2012	5/8/2013
Roe 1590	Janice Mitsushima	3/23/2012	5/8/2013
Roe 1593	Chiung Mo	3/23/2012	5/8/2013
Roe 1595	Bjorn Moene	3/23/2012	5/8/2013
Roe 1596	Celina Molina	3/23/2012	5/8/2013
Roe 1598	Patricio Moneda	3/23/2012	5/8/2013
Roe 1599	Saeed Monfared	3/23/2012	5/8/2013
Roe 1600	Eusebio Montemayor	3/23/2012	5/8/2013
Roe 1601	Maria Montes	3/23/2012	5/8/2013
Roe 1602	Judith Moore	3/23/2012	5/8/2013
Roe 1603	Thomas Moore	3/23/2012	5/8/2013
Roe 1604	William Moore	3/23/2012	5/8/2013
Roe 1605	Michael Moreno	3/23/2012	5/8/2013
Roe 1606	Ritsuko Mori	3/23/2012	5/8/2013
Roe 1607	John Morris	3/23/2012	5/8/2013
Roe 1609	Mary Moses	3/23/2012	5/8/2013

DEFAULTS ENTERED

Doe/Roe No.	Name of Roe Cross-Defendant	Default Entered	Default Posted
Roe 1610	Firouzeh Motavvef	3/23/2012	5/8/2013
Roe 1611	Mansoor Motavvef	3/23/2012	5/8/2013
Roe 1612	Girard Moughalian	3/23/2012	5/8/2013
Roe 1613	Renate Moughalian	3/23/2012	5/8/2013
Roe 1614	Marilyn Mudgett	3/23/2012	5/8/2013
Roe 1615	Brandon Mullins	3/23/2012	5/8/2013
Roe 1616	Maia Mulvena	3/23/2012	5/8/2013
Roe 1618	Emma Mungia	3/23/2012	5/8/2013
Roe 1620	Dan Munz	3/23/2012	5/8/2013
Roe 1623	Bronwyn Murdock	3/23/2012	5/8/2013
Roe 1624	Estela Muro	3/23/2012	5/8/2013
Roe 1626	Murtaugh Survivors Trust	3/23/2012	5/8/2013
Roe 1628	Duk Myung	3/23/2012	5/8/2013
Roe 1629	Hyun Myung	3/23/2012	5/8/2013
Roe 1631	Mary Nadwodny	3/23/2012	5/8/2013
Roe 1635	Satoye Nakamichi	3/23/2012	5/8/2013
Roe 1636	Yoshito Nakashima	3/23/2012	5/8/2013
Roe 1637	Shizuko Nakawatase	3/23/2012	5/8/2013
Roe 1638	Yoshitaka Nakawatase	3/23/2012	5/8/2013
Roe 1639	Jim Nanamkin	3/23/2012	5/8/2013
Roe 1640	David Naputi	3/23/2012	5/8/2013
Roe 1642	Nationwide Asset Management LP	3/23/2012	5/8/2013
Roe 1643	Charyl Naval	3/23/2012	5/8/2013
Roe 1645	Andrea Navarro	3/23/2012	5/8/2013

DEFAULTS ENTERED

Doe/Roe No.	Name of Roe Cross-Defendant	Default Entered	Default Posted
Roe 1647	Jose Navarro	3/23/2012	5/8/2013
Roe 1651	Dorwin Newman	3/23/2012	5/8/2013
Roe 1652	Shirley Newman	3/23/2012	5/8/2013
Roe 1653	Newsom Family Trust	3/23/2012	5/8/2013
Roe 1654	Binh Ngo	3/23/2012	5/8/2013
Roe 1655	Anthony Nguyen	3/23/2012	5/8/2013
Roe 1656	Danny Nguyen	3/23/2012	5/8/2013
Roe 1657	Frank Nguyen	3/23/2012	5/8/2013
Roe 1658	Ngoc Nguyen	3/23/2012	5/8/2013
Roe 1659	Nguyet Nguyen	3/23/2012	5/8/2013
Roe 1660	Sonnie Nguyen	3/23/2012	5/8/2013
Roe 1661	Thanh Nguyen	3/23/2012	5/8/2013
Roe 1665	Gerard Nicholson	3/23/2012	5/8/2013
Roe 1666	Marie Nicholson	3/23/2012	5/8/2013
Roe 1668	Eric Nishida	3/23/2012	5/8/2013
Roe 1670	Lydia Nixon	3/23/2012	5/8/2013
Roe 1672	Dixie Noel	3/23/2012	5/8/2013
Roe 1674	Mark Noterman	3/23/2012	5/8/2013
Roe 1675	Yvette Noterman	3/23/2012	5/8/2013
Roe 1676	Nancy Nou	3/23/2012	5/8/2013
Roe 1677	Cipriano Noveloso	3/23/2012	5/8/2013
Roe 1678	Dolores Noveloso	3/23/2012	5/8/2013
Roe 1679	Henry Nozaki	3/23/2012	5/8/2013
Roe 1680	Naomi Nozaki	3/23/2012	5/8/2013

DEFAULTS ENTERED

Doe/Roe No.	Name of Roe Cross-Defendant	Default Entered	Default Posted
Roe 1681	Mary Nutter	3/23/2012	5/8/2013
Roe 1682	Merle Oberg	3/23/2012	5/8/2013
Roe 1683	Timothy Oconnor	3/23/2012	5/8/2013
Roe 1684	Jessie Ohta	3/23/2012	5/8/2013
Roe 1685	Haruto Okihara	3/23/2012	5/8/2013
Roe 1687	Rick Olivas	3/23/2012	5/8/2013
Roe 1688	Olson Family Trust	3/23/2012	5/8/2013
Roe 1691	Adoracion Orara	3/23/2012	5/8/2013
Roe 1692	Francisco Orara	3/23/2012	5/8/2013
Roe 1694	Evelyn Ortega	3/23/2012	5/8/2013
Roe 1695	Joe Mari Ortega	3/23/2012	5/8/2013
Roe 1696	Pedro Ortega	3/23/2012	5/8/2013
Roe 1698	Doris Oshiro	3/23/2012	5/8/2013
Roe 1699	Firooz Oskooi	3/23/2012	5/8/2013
Roe 1705	Charlene Padgett	3/23/2012	5/8/2013
Roe 1706	Roy Padgett	3/23/2012	5/8/2013
Roe 1707	Marta Padilla	3/23/2012	5/8/2013
Roe 1708	Paz Padilla	3/23/2012	5/8/2013

DEFAULTS ENTERED

Doe/Roe No.	Name of Roe Cross-Defendant	Default Entered	Default Posted
Roe 1709	Claire Padua	3/23/2012	5/8/2013
Roe 1711	Leonida Pagdilao	3/23/2012	5/8/2013
Roe 1712	Julio Palacio	3/23/2012	5/8/2013
Roe 1714	Palmdale 5th Street West LLC	3/23/2012	5/8/2013
Roe 1715	Palmdale Family Housing	3/23/2012	5/8/2013
Roe 1716	Palmdale Lodging Associates LLC	3/23/2012	5/8/2013
Roe 1717	Palmdale Mobile Park LLC	3/23/2012	5/8/2013
Roe 1719	Eugenio Paredes	3/23/2012	5/8/2013
Roe 1722	Inyoung Park	3/23/2012	5/8/2013
Roe 1728	Jose Pastrano	3/23/2012	5/8/2013
Roe 1730	Sally Patino	3/23/2012	5/8/2013
Roe 1732	Adrian Pauling	3/23/2012	5/8/2013
Roe 1738	Vicenta Pena	3/23/2012	5/8/2013
Roe 1740	Michael Pereira	3/23/2012	5/8/2013
Roe 1741	Rosa Perez	3/23/2012	5/8/2013
Roe 1742	PH Rosamond LLC	3/23/2012	5/8/2013
Roe 1743	Orrin Phillips	3/23/2012	5/8/2013
Roe 1744	Paul Pieratt	3/23/2012	5/8/2013
Roe 1748	Arthur Pizano	3/23/2012	5/8/2013
Roe 1750	Tavil Ployngam	3/23/2012	5/8/2013
Roe 1751	Perla Pollard	3/23/2012	5/8/2013
Roe 1752	Robert Pollard	3/23/2012	5/8/2013
Roe 1755	Poole Family Tr	3/23/2012	5/8/2013
Roe 1756	Dora Porcari	3/23/2012	5/8/2013
Roe 1760	Robert Potter	3/23/2012	5/8/2013
Roe 1762	Waraya Pratanthip	3/23/2012	5/8/2013

EXHIBIT 1

DEFAULTS ENTERED

Doe/Roe No.	Name of Roe Cross-Defendant	Default Entered	Default Posted
Roe 1764	Romano Procida	3/23/2012	5/8/2013
Roe 1765	Bruno Prodan	3/23/2012	5/8/2013
Roe 1766	Rosa Prodan	3/23/2012	5/8/2013
Roe 1767	PVK Family Limited Ptn	3/23/2012	5/8/2013
Roe 1768	Quan Quoc Pham	3/23/2012	5/8/2013
Roe 1769	Quantumcue Inc	3/23/2012	5/8/2013
Roe 1770	Bella Questin	3/23/2012	5/8/2013
Roe 1773	Mary Quinlan	3/23/2012	5/8/2013
Roe 1774	Theodore Rabena	3/23/2012	5/8/2013
Roe 1776	Armando Raguine	3/23/2012	5/8/2013
Roe 1778	Gay Ralphs	3/23/2012	5/8/2013
Roe 1779	Fred Rampe	3/23/2012	5/8/2013
Roe 1780	Felicitas Ranada	3/23/2012	5/8/2013
Roe 1782	Mahmud Rawjee	3/23/2012	5/8/2013
Roe 1783	Fereidoun Razavi	3/23/2012	5/8/2013
Roe 1784	Clarence Razer	3/23/2012	5/8/2013
Roe 1785	Jean Razer	3/23/2012	5/8/2013
Roe 1786	Joan Reach	3/23/2012	5/8/2013
Roe 1788	Robert Reed	3/23/2012	5/8/2013
Roe 1789	Barbara Reff	3/23/2012	5/8/2013
Roe 1790	Herbert Reff	3/23/2012	5/8/2013
Roe 1791	Mary Reid	3/23/2012	5/8/2013
Roe 1795	Concepcion Reyes	3/23/2012	5/8/2013
Roe 1796	Elizabeth Reyes	3/23/2012	5/8/2013
Roe 1797	Ernesto Reyes	3/23/2012	5/8/2013

DEFAULTS ENTERED

Doe/Roe No.	Name of Roe Cross-Defendant	Default Entered	Default Posted
Roe 1798	Vicente Reyes	3/23/2012	5/8/2013
Roe 1801	Sei Rhee	3/23/2012	5/8/2013
Roe 1803	Susan Rhoda	3/23/2012	5/8/2013
Roe 1804	Michele Rhoden	3/23/2012	5/8/2013
Roe 1805	Morris Richards	3/23/2012	5/8/2013
Roe 1807	Ronald Ricketts	3/23/2012	5/8/2013
Roe 1810	Anita Rider	3/23/2012	5/8/2013
Roe 1811	Florence Rimando	3/23/2012	5/8/2013
Roe 1812	Ruben Rimando	3/23/2012	5/8/2013
Roe 1813	Maria Rios	3/23/2012	5/8/2013
Roe 1814	Nicolas Rios	3/23/2012	5/8/2013
Roe 1815	Joyce Ripperda	3/23/2012	5/8/2013
Roe 1816	James Rippon	3/23/2012	5/8/2013
Roe 1818	George Rivera	3/23/2012	5/8/2013
Roe 1820	David Robbie	3/23/2012	5/8/2013
Roe 1821	Kinue Robbie	3/23/2012	5/8/2013
Roe 1822	Tracy Roberson	3/23/2012	5/8/2013
Roe 1824	Charles Robertson	3/23/2012	5/8/2013
Roe 1825	Albert Rodarte	3/23/2012	5/8/2013
Roe 1826	Concepcion Rodriguez	3/23/2012	5/8/2013
Roe 1827	Guadalupe Rodriguez	3/23/2012	5/8/2013
Roe 1828	Ignacio Rodriguez	3/23/2012	5/8/2013
Roe 1829	John Rodriguez	3/23/2012	5/8/2013

EXHIBIT 1

DEFAULTS ENTERED

Doe/Roe No.	Name of Roe Cross-Defendant	Default Entered	Default Posted
Roe 1831	Roquemore Tr	3/23/2012	5/8/2013
Roe 1832	Russell Rosenberry	3/23/2012	5/8/2013
Roe 1835	Robert Rosenthal	3/23/2012	5/8/2013
Roe 1836	Ross Rebar Co., Inc.	3/23/2012	5/8/2013
Roe 1837	Richard Rottgering	3/23/2012	5/8/2013
Roe 1838	Trisha Rowe	3/23/2012	5/8/2013
Roe 1839	Marshall Rowen	3/23/2012	5/8/2013
Roe 1840	Myra Rowland	3/23/2012	5/8/2013
Roe 1841	Sidney Ru	3/23/2012	5/8/2013
Roe 1842	James Rubenstein	3/23/2012	5/8/2013
Roe 1846	Dewey Runkle	3/23/2012	5/8/2013
Roe 1847	Lynn Ruona	3/23/2012	5/8/2013
Roe 1848	Frederick Ruopp	3/23/2012	5/8/2013
Roe 1849	Berna Russell	3/23/2012	5/8/2013
Roe 1850	Helen Russell	3/23/2012	5/8/2013
Roe 1851	Patricia Ruston	3/23/2012	5/8/2013
Roe 1852	Tom Ruston	3/23/2012	5/8/2013
Roe 1854	Hermogenes Sacman	3/23/2012	5/8/2013
Roe 1860	Katsuji Saito	3/23/2012	5/8/2013
Roe 1861	Gabriel Salazar	3/23/2012	5/8/2013
Roe 1862	Hoger Saleh	3/23/2012	5/8/2013
Roe 1863	Betty Sallen	3/23/2012	5/8/2013
Roe 1864	Joseph Sallen	3/23/2012	5/8/2013
Roe 1865	San Diego French American	3/23/2012	5/8/2013
Roe 1867	Francisco Sanchez	3/23/2012	5/8/2013

EXHIBIT 1

DEFAULTS ENTERED

Doe/Roe No.	Name of Roe Cross-Defendant	Default Entered	Default Posted
Roe 1868	Maria Sanchez	3/23/2012	5/8/2013
Roe 1869	Gregorio Santos	3/23/2012	5/8/2013
Roe 1870	Jose Saromines	3/23/2012	5/8/2013
Roe 1872	Sasaki Family Trust 1995	3/23/2012	5/8/2013
Roe 1873	Karen Sauer	3/23/2012	5/8/2013
Roe 1874	Amy Say	3/23/2012	5/8/2013
Roe 1875	William Schad	3/23/2012	5/8/2013
Roe 1876	Alice Schaeffer	3/23/2012	5/8/2013
Roe 1877	Bud Schaeffer	3/23/2012	5/8/2013
Roe 1884	Judith Schlegel	3/23/2012	5/8/2013
Roe 1885	Stephen Schlegel	3/23/2012	5/8/2013
Roe 1887	Hazel Schoepflin	3/23/2012	5/8/2013
Roe 1888	Niel Schoepflin	3/23/2012	5/8/2013
Roe 1891	John Schulte	3/23/2012	5/8/2013
Roe 1892	Philip Schultz	3/23/2012	5/8/2013
Roe 1893	Betty Scidmore	3/23/2012	5/8/2013
Roe 1894	Robert Scott	3/23/2012	5/8/2013
Roe 1895	Patricia Scruggs	3/23/2012	5/8/2013
Roe 1897	Henry Segrove	3/23/2012	5/8/2013
Roe 1898	Florence Seibert	3/23/2012	5/8/2013

DEFAULTS ENTERED

Doe/Roe No.	Name of Roe Cross-Defendant	Default Entered	Default Posted
Roe 1899	Alvin Selnick	3/23/2012	5/8/2013
Roe 1901	Carl Semotan	3/23/2012	5/8/2013
Roe 1903	Ralph Sexton	3/23/2012	5/8/2013
Roe 1904	Eugenia Shadd	3/23/2012	5/8/2013
Roe 1905	William Shannon	3/23/2012	5/8/2013
Roe 1908	Catherine Shearer	3/23/2012	5/8/2013
Roe 1909	Shearer Marital Trust	3/23/2012	5/8/2013
Roe 1911	Earnest Sherman	3/23/2012	5/8/2013
Roe 1912	Hajime Shibuya	3/23/2012	5/8/2013
Roe 1913	Kyoko Shibuya	3/23/2012	5/8/2013
Roe 1914	Lupe Shimabukuro	3/23/2012	5/8/2013
Roe 1915	Rodney Shimabukuro	3/23/2012	5/8/2013
Roe 1916	Yoshiaki Shimizu	3/23/2012	5/8/2013
Roe 1917	Shogo Shimomura	3/23/2012	5/8/2013
Roe 1918	Alves Shiu	3/23/2012	5/8/2013
Roe 1919	Benjamin Shlomi	3/23/2012	5/8/2013
Roe 1920	Behrouz Shokri	3/23/2012	5/8/2013

DEFAULTS ENTERED

Doe/Roe No.	Name of Roe Cross-Defendant	Default Entered	Default Posted
Roe 1921	Fariba Shokri	3/23/2012	5/8/2013
Roe 1924	Lolita Sicat	3/23/2012	5/8/2013
Roe 1925	Jakob Siccama	3/23/2012	5/8/2013
Roe 1928	Sierra Gateway Resolution LLC	3/23/2012	5/8/2013
Roe 1930	Edward Simon	3/23/2012	5/8/2013
Roe 1932	Gora Singh	3/23/2012	5/8/2013
Roe 1933	Tina Singh	3/23/2012	5/8/2013
Roe 1935	Esther Siville	3/23/2012	5/8/2013
Roe 1936	Siville Family Trust	3/23/2012	5/8/2013
Roe 1937	Charles Skaggs	3/23/2012	5/8/2013
Roe 1938	Rebecca Skaggs	3/23/2012	5/8/2013
Roe 1939	Georgette Skiadas	3/23/2012	5/8/2013
Roe 1941	Charles Skinner	3/23/2012	5/8/2013
Roe 1942	Sharren Skinner	3/23/2012	5/8/2013
Roe 1943	Frank Small	3/23/2012	5/8/2013
Roe 1945	Chong Smith	3/23/2012	5/8/2013
Roe 1946	Jack Smith	3/23/2012	5/8/2013
Roe 1948	Larry Smith	3/23/2012	5/8/2013
Roe 1951	Robert Smith	3/23/2012	5/8/2013

DEFAULTS ENTERED

Doe/Roe No.	Name of Roe Cross-Defendant	Default Entered	Default Posted
Roe 1953	Gary Snyder	3/23/2012	5/8/2013
Roe 1956	Konstantinos Soteropoulos	3/23/2012	5/8/2013
Roe 1957	Juan Soto	3/23/2012	5/8/2013
Roe 1958	James South	3/23/2012	5/8/2013
Roe 1961	Edward Sovich	3/23/2012	5/8/2013
Roe 1963	T Spenard	3/23/2012	5/8/2013
Roe 1964	Francis Sperling	3/23/2012	5/8/2013
Roe 1965	David Sserunkuma	3/23/2012	5/8/2013
Roe 1967	Virginia Stadler	3/23/2012	5/8/2013
Roe 1969	Alan Stenerson	3/23/2012	5/8/2013
Roe 1971	Teresita Sterkel	3/23/2012	5/8/2013
Roe 1973	Nicole Stetson	3/23/2012	5/8/2013
Roe 1975	Stipancic Tr	3/23/2012	5/8/2013
Roe 1976	Brian Stone	3/23/2012	5/8/2013
Roe 1977	Lois Stover	3/23/2012	5/8/2013
Roe 1980	Wilma Stremel	3/23/2012	5/8/2013
Roe 1981	Thomas Striegler	3/23/2012	5/8/2013
Roe 1982	Steve Stubner	3/23/2012	5/8/2013
Roe 1983	Guzel Sturm	3/23/2012	5/8/2013
Roe 1987	Jordan Sugarman	3/23/2012	5/8/2013
Roe 1988	Ruth Sugarman	3/23/2012	5/8/2013
Roe 1991	Eugene Summers	3/23/2012	5/8/2013
Roe 1993	Queenie Summers	3/23/2012	5/8/2013

EXHIBIT 1

DEFAULTS ENTERED

Doe/Roe No.	Name of Roe Cross-Defendant	Default Entered	Default Posted
Roe 1995	Frana Sunjka	3/23/2012	5/8/2013
Roe 1996	Joseph Sunjka	3/23/2012	5/8/2013
Roe 1997	Sunlight Townhome LLC	3/23/2012	5/8/2013
Roe 1998	Lenny Supa	3/23/2012	5/8/2013
Roe 2000	Fadia Sweis	3/23/2012	5/8/2013
Roe 2001	Samir Sweis	3/23/2012	5/8/2013
Roe 2002	Ethel Szeto	3/23/2012	5/8/2013
Roe 2003	T L Squared LLC	3/23/2012	5/8/2013
Roe 2005	Takashi Takagi	3/23/2012	5/8/2013
Roe 2006	Reiko Takashita	3/23/2012	5/8/2013
Roe 2008	Grover Talley	3/23/2012	5/8/2013
Roe 2009	Herbert Tam	3/23/2012	5/8/2013
Roe 2010	Cres Tamayo	3/23/2012	5/8/2013
Roe 2011	Macario Tamayo	3/23/2012	5/8/2013
Roe 2012	Corazon Tan	3/23/2012	5/8/2013
Roe 2013	Fidelino Tan	3/23/2012	5/8/2013
Roe 2014	Alice Tanaka	3/23/2012	5/8/2013
Roe 2015	Roy Tanaka	3/23/2012	5/8/2013
Roe 2017	Robin Taniguchi	3/23/2012	
Roe 2018	Chi-Kwang Tao	3/23/2012	
Roe 2019	Ting-Ning Tao	3/23/2012	
Roe 2020	George Tapia	3/23/2012	

DEFAULTS ENTERED

Doe/Roe No.	Name of Roe Cross-Defendant	Default Entered	Default Posted
Roe 2021	F Taylor	3/23/2012	
Roe 2026	Fumio Teruya	3/23/2012	
Roe 2027	Hisako Teruya	3/23/2012	
Roe 2032	Mary Thompson	3/23/2012	
Roe 2033	William Thompson	3/23/2012	5/8/2013
Roe 2036	Thyra Retzke Family Trust	3/23/2012	
Roe 2037	Ronald Tichauer	3/23/2012	5/8/2013
Roe 2038	Louise Tiendas	3/23/2012	
Roe 2039	Tertius Tiendas	3/23/2012	
Roe 2041	Chiang Ting	3/23/2012	
Roe 2042	Insurance Title	3/23/2012	
Roe 2043	Title Insurance and Trust Company	3/23/2012	
Roe 2044	Lynn Tivens	3/23/2012	
Roe 2045	Arthur Tobin	3/23/2012	
Roe 2046	Hilda Tobin	3/23/2012	
Roe 2047	Today Investment Group LLC	3/23/2012	5/8/2013
Roe 2050	Alice Tomei	3/23/2012	

DEFAULTS ENTERED

Doe/Roe No.	Name of Roe Cross-Defendant	Default Entered	Default Posted
Roe 2051	Ralph Tomei	3/23/2012	
Roe 2052	Glen Tomkiewicz	3/23/2012	
Roe 2053	Jill Tomkiewicz	3/23/2012	
Roe 2054	Benny Tomlinson	3/23/2012	
Roe 2055	Dalisay Torres	3/23/2012	
Roe 2056	Edilberto Torres	3/23/2012	
Roe 2057	Nerio Torres	3/23/2012	
Roe 2058	Shirley Torres	3/23/2012	
Roe 2059	Victor Torres	3/23/2012	
Roe 2061	Felipe Tovar	3/23/2012	5/8/2013
Roe 2063	Huynh Tran	3/23/2012	
Roe 2064	Jeannie Tran	3/23/2012	
Roe 2065	Sharon Tremblay	3/23/2012	
Roe 2066	Emma Trochim	3/23/2012	
Roe 2069	Jenny Truong	3/23/2012	
Roe 2071	Liu Fang Tsen	3/23/2012	
Roe 2073	Gail Tshako	3/23/2012	

DEFAULTS ENTERED

Doe/Roe No.	Name of Roe Cross-Defendant	Default Entered	Default Posted
Roe 2074	John Tshako	3/23/2012	
Roe 2078	Arthur Ulat	3/23/2012	
Roe 2079	Eldena Ulat	3/23/2012	
Roe 2080	Richard Unfried	3/23/2012	
Roe 2081	Hoa Uong	3/23/2012	
Roe 2083	Leslie Urban	3/23/2012	
Roe 2084	Civ Ushigome	3/23/2012	
Roe 2086	Amelia Uyehara	3/23/2012	
Roe 2087	Eddie Uyehara	3/23/2012	
Roe 2090	Elpidio Valdez	3/23/2012	
Roe 2092	Max Van Runkle	3/23/2012	5/8/2013
Roe 2093	Evangeline Vance	3/23/2012	5/8/2013
Roe 2094	Donna Vandergroen	3/23/2012	5/8/2013
Roe 2095	Ronald Vandergroen	3/23/2012	5/8/2013
Roe 2096	Victor Varela	3/23/2012	5/8/2013
Roe 2097	Danny Vaughn	3/23/2012	5/8/2013
Roe 2098	Gil Velchez	3/23/2012	5/8/2013
Roe 2099	Lolita Velchez	3/23/2012	5/8/2013
Roe 2100	Velur Properties LLC	3/23/2012	5/8/2013

DEFAULTS ENTERED

Doe/Roe No.	Name of Roe Cross-Defendant	Default Entered	Default Posted
Roe 2101	Venture Industrial LLC	3/23/2012	
Roe 2102	Crispino Vicari	3/23/2012	5/8/2013
Roe 2103	Isaias Vicens	3/23/2012	5/8/2013
Roe 2104	Bertha Villagomez	3/23/2012	5/8/2013
Roe 2105	Jose Villalpando	3/23/2012	5/8/2013
Roe 2106	Norma Villarente	3/23/2012	5/8/2013
Roe 2107	Doris Villegas	3/23/2012	5/8/2013
Roe 2108	Gregario Villegas	3/23/2012	5/8/2013
Roe 2109	Margarita Viloría	3/23/2012	5/8/2013
Roe 2110	Edward Vilt	3/23/2012	5/8/2013
Roe 2111	Rodger Virtue	3/23/2012	5/8/2013
Roe 2112	Danny Visitacion	3/23/2012	5/8/2013
Roe 2117	Richard Vonborcke	3/23/2012	5/8/2013
Roe 2118	Elisa Vondra	3/23/2012	5/8/2013
Roe 2119	James Vondra	3/23/2012	5/8/2013
Roe 2121	Robert Wade	3/23/2012	5/8/2013
Roe 2124	Daniel Walden	3/23/2012	5/8/2013
Roe 2125	Cecil Walker	3/23/2012	5/8/2013
Roe 2126	Grace Walker	3/23/2012	5/8/2013
Roe 2127	Patricia Wallace	3/23/2012	5/8/2013
Roe 2128	William Wallace	3/23/2012	5/8/2013
Roe 2134	Wong Wang	3/23/2012	5/8/2013
Roe 2135	William Warmington	3/23/2012	5/8/2013

EXHIBIT 1

DEFAULTS ENTERED

Doe/Roe No.	Name of Roe Cross-Defendant	Default Entered	Default Posted
Roe 2136	James Warner	3/23/2012	5/8/2013
Roe 2137	Leigh Warner	3/23/2012	5/8/2013
Roe 2138	Amy Watson	3/23/2012	5/8/2013
Roe 2139	Elizabeth Weaver	3/23/2012	5/8/2013
Roe 2140	George Webb	3/23/2012	5/8/2013
Roe 2141	Cecilia Wei	3/23/2012	5/8/2013
Roe 2142	Chung Wei	3/23/2012	5/8/2013
Roe 2143	Suhmei Wei	3/23/2012	5/8/2013
Roe 2145	Ival West	3/23/2012	5/8/2013
Roe 2147	Richard Wheaton	3/23/2012	5/8/2013
Roe 2148	Betty White	3/23/2012	5/8/2013
Roe 2149	Edward White	3/23/2012	5/8/2013
Roe 2150	James White	3/23/2012	5/8/2013
Roe 2151	Loretta White	3/23/2012	5/8/2013
Roe 2152	Vivian White	3/23/2012	5/8/2013
Roe 2153	Walt White	3/23/2012	5/8/2013
Roe 2158	Gary Wilcox	3/23/2012	5/8/2013
Roe 2160	Cynthia Williams	3/23/2012	5/8/2013
Roe 2161	Ronald Williams	3/23/2012	5/8/2013

DEFAULTS ENTERED

Doe/Roe No.	Name of Roe Cross-Defendant	Default Entered	Default Posted
Roe 2162	Williams Fmly Tr (NAK reads, "Williams Family Trust")	3/23/2012	5/8/2013
Roe 2164	Donald Wilson	3/23/2012	5/8/2013
Roe 2168	Wilson Family Tr	3/23/2012	5/8/2013
Roe 2169	Donald Winkler	3/23/2012	5/8/2013
Roe 2170	Susan Winkler	3/23/2012	5/8/2013
Roe 2171	Theresa Winters	3/23/2012	5/8/2013
Roe 2172	WKR360-6 LLC	3/23/2012	5/8/2013
Roe 2173	Heatwig Wloczyk	3/23/2012	5/8/2013
Roe 2175	Margaret Wolfe	3/23/2012	5/8/2013
Roe 2176	Otis Wolfe	3/23/2012	5/8/2013
Roe 2177	Gary Wong	3/23/2012	5/8/2013
Roe 2179	Mai Wong	3/23/2012	5/8/2013
Roe 2180	Karen Wonnell	3/23/2012	5/8/2013
Roe 2182	Robert Woodall	3/23/2012	5/8/2013
Roe 2185	Mary Wray	3/23/2012	5/8/2013
Roe 2186	Emiko Wright	3/23/2012	5/8/2013
Roe 2189	Robert Wright	3/23/2012	5/8/2013
Roe 2192	Roobik Yaghoubi	3/23/2012	5/8/2013
Roe 2193	Antonio Yago	3/23/2012	5/8/2013
Roe 2194	Grace Yamada	3/23/2012	5/8/2013
Roe 2195	Maria Yanez	3/23/2012	5/8/2013
Roe 2196	Wendy Yang	3/23/2012	5/8/2013
Roe 2197	Joseph Yankovich	3/23/2012	5/8/2013
Roe 2198	Monica Yeomans	3/23/2012	5/8/2013

DEFAULTS ENTERED

Doe/Roe No.	Name of Roe Cross-Defendant	Default Entered	Default Posted
Roe 2199	Tammy Yin	3/23/2012	5/8/2013
Roe 2201	Barney Yoshino	3/23/2012	5/8/2013
Roe 2202	Carlos Young	3/23/2012	5/8/2013
Roe 2203	Julie Young	3/23/2012	5/8/2013
Roe 2204	Kim Young	3/23/2012	5/8/2013
Roe 2205	Bob Yu	3/23/2012	5/8/2013
Roe 2206	Kyu Yu	3/23/2012	5/8/2013
Roe 2207	Brian Yung	3/23/2012	5/8/2013
Roe 2210	Coral Zedicher	3/23/2012	5/8/2013
Roe 2211	Donald Zedicher	3/23/2012	5/8/2013
Roe 2212	Hao Zhan	3/23/2012	5/8/2013
Roe 2213	Stanley Zimmerman	3/23/2012	5/8/2013
Roe 2214	Milton Zucker	3/23/2012	5/8/2013
Roe 2215	Natalie Zucker	3/23/2012	5/8/2013
Roe 2218	Charlotte Zwinger	3/23/2012	5/8/2013
Roe 2219	Mark McNerney	3/23/2012	5/8/2013
Roe 2221	Jon Safranek	3/23/2012	5/8/2013
Roe 2224	Robert Jones	3/23/2012	5/8/2013
Roe 2225	James Jones	3/23/2012	5/8/2013
Roe 2226	Adriana Balderra	3/23/2012	5/8/2013
Roe 2231	Donald Johnson	3/23/2012	5/8/2013
Roe 2232	Richard Peters	3/23/2012	5/8/2013
Roe 2239	Sam Sarieddine	3/23/2012	5/8/2013

EXHIBIT 1

DEFAULTS ENTERED

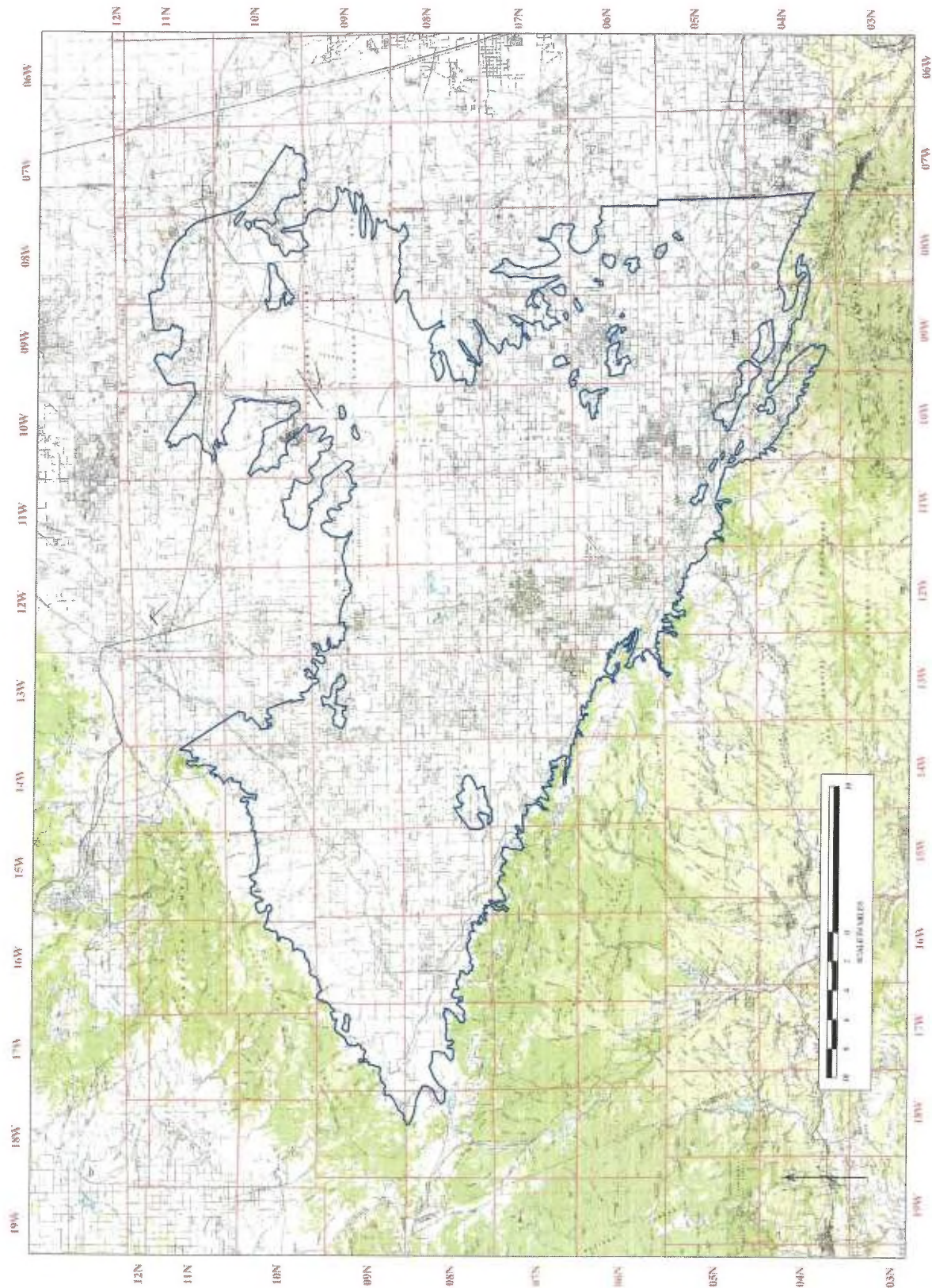
Doe/Roe No.	Name of Roe Cross-Defendant	Default Entered	Default Posted
Roe 2240	Mitchell Truesdale	3/23/2012	5/8/2013
Roe 2241	Keith Calhoun	3/23/2012	5/8/2013
Roe 2242	Barbara Schultz	3/23/2012	5/8/2013
Roe 2243	Bruce Sylvies	3/23/2012	5/8/2013
Roe 2244	Philip Schultz	3/23/2012	5/8/2013
Roe 2245	Dralle	3/23/2012	5/8/2013
Roe 2248	Alba Castillo	3/23/2012	5/8/2013
Roe 2249	Selton Phillips	3/23/2012	5/8/2013
Roe 2250	Moises Merestela	3/23/2012	5/8/2013
Roe 2251	Diana Burke	3/23/2012	5/8/2013
Roe 2253	Stanley Vong	3/23/2012	5/8/2013
Roe 2254	Larry Wilborn	3/23/2012	5/8/2013
Roe 2255	Michie Wilborn	3/23/2012	5/8/2013
Roe 2256	John Lazarus	3/23/2012	5/8/2013
Roe 2257	Lambartha Vandenberg Tr	3/23/2012	5/8/2013
Roe 2260	George Sack	3/23/2012	5/8/2013
Roe 2261	Palmdale Mobile Frank LLC	3/23/2012	5/8/2013
Roe 2265	John Griffin	3/23/2012	5/8/2013

DEFAULTS ENTERED

Doe/Roe No.	Name of Roe Cross-Defendant	Default Entered	Default Posted
Roe 2267	Porter Sprolls	3/23/2012	5/8/2013
Roe 2268	Albert Gaba	3/23/2012	5/8/2013
Roe 2269	Delia Gaba	3/23/2012	5/8/2013
Roe 2270	Audrey Sprolls	3/23/2012	5/8/2013
Roe 2272	Francisco Batino	3/23/2012	5/8/2013
Roe 2274	Bar Or Carmit	3/23/2012	5/8/2013
Roe 2275	Joseph Kinkoopf	3/23/2012	5/8/2013
Roe 2276	Tina Kinkoopf	3/23/2012	5/8/2013
Roe 2277	Jerry F. Shotbolt / Shotbolt Family Trust	3/23/2012	5/8/2013
Roe 2279	Benjamin C Both	3/23/2012	5/8/2013
Roe 2280	Christina D Both	3/23/2012	5/8/2013
Roe 2283	Manuel Ariliano	3/23/2012	5/8/2013
Roe 2284	Leodegaria A Ariliano	3/23/2012	5/8/2013
Roe 2285	Sandra Pastor	3/23/2012	5/8/2013
Roe 2286	Erik R. Hermann / Hermann Trust	3/23/2012	5/8/2013
Roe 2287	Julia A Hermann / Hermann Trust	3/23/2012	5/8/2013
Roe 2288	Albert T Rodriguez	3/23/2012	5/8/2013
Roe 2289	Edelmira B Rodriguez	3/23/2012	5/8/2013
Roe 2292	Juan A Valenzuela	3/23/2012	5/8/2013
Roe 2294	Vicki Atkins / Atkins Trust	3/23/2012	5/8/2013

DEFAULTS ENTERED

Doe/Roe No.	Name of Roe Cross-Defendant	Default Entered	Default Posted
Roe 2295	Stephen D Wahl	3/23/2012	5/8/2013
Roe 2296	Mettler Valley Mutual Water Co.	3/23/2012	5/8/2013



**Jurisdictional Boundary
Antelope Valley Groundwater Adjudication**

EXHIBIT 2

Producer Name	Non-Overlying Production Rights (in Acre-Feet)	Percentage Share of Adjusted Native Safe Yield
Los Angeles County Waterworks District No. 40	6,789.26	9.605%
Palmdale Water District	2,769.63	3.918%
Little Rock Creek Irrigation District	796.58	1.127%
Quartz Hill Water District	563.73	0.798%
Rosamond Community Services District	404.42	0.572%
Palm Ranch Irrigation District	465.69	0.659%
Desert Lake Community Services District	73.53	0.104%
California Water Service Company	343.14	0.485%
North Edwards Water District	49.02	0.069%
Boron Community Services District	50.00	0.071%
West Valley County Water District	40.00	0.057%
Total Acre Feet:	12,345.00	

**Judicial Council Coordination
 Proceeding No. 4408
 Santa Clara Case No.: 1-05-CV-049053**

Producer Name	Pre-Rampdown Production	Overlying Production Rights	Percentage Share of Adjusted Native Safe Yield
Adams Bennett Investments, LLC	0.00	0.00	0.000%
Antelope Park Mutual Water Company	208.75	169.89	0.240%
Antelope Valley Joint Union High School District	71.74	41.00	0.058%
Antelope Valley Mobile Estates	19.88	6.69	0.009%
Antelope Valley Water Storage LLC	1772.00	1772.00	2.507%
Aqua-J Mutual Water Company	44.90	44.35	0.063%
AV Solar Ranch 1, LLC	96.00	96.00	0.136%
AVEK	4000.00	3550.00	5.022%
Averydale Mutual Water Company	257.95	254.35	0.360%
Baxter Mutual Water Company	44.75	35.02	0.050%
Big Rock Mutual Water Company	0.00	0.00	0.000%
Bleich Flat Mutual Water Company	33.50	33.50	0.047%
Bolthouse Properties LLC	16805.89	9945.00	14.069%
Brittner Trust, Glen Brittner, Trustee	4.00	4.00	0.006%
Burrows/300 A40 H LLC	295.00	295.00	0.417%
C. Louise R. Close Living Trust	1.00	1.00	0.001%
City of Los Angeles, Department of Airports	7851.00	3975.00	5.623%
Colorado Mutual Water Co.	25.90	25.54	0.036%
Copa De Oro Land Company	325.00	325.00	0.460%
County Sanitation Districts of Los Angeles #14 and 20	8000.00	3400.00	4.810%
Craig Van Dam, Marta Van Dam, Nick Van Dam, Janet Van Dam	1037.00	640.00	0.905%
Del Sur Ranch LLC	600.00	600.00	0.849%
Dennis M. and Diane K. McWilliams	1.00	1.00	0.001%
Diamond Farming Co. LLC/Crystal Organic LLC/Grimmway/Lapis	3354.00	1986.00	2.810%
Donna Wilson	10.00	7.00	0.010%
Effren Chavez	44.00	44.00	0.062%
El Dorado Mutual Water Company	276.05	272.16	0.385%
eSolar Inc.; Red Dawn Suntower LLC	150.00	150.00	0.212%
eSolar Inc.; Tumbleweed Suntower LLC	0.00	0.00	0.000%
eSolar, Inc.; Sierra Sun Tower, LLC	5.76	3.00	0.004%
Eugene B. Nebeker	4016.00	1775.00	2.511%
Evergreen Mutual Water Company	69.50	68.54	0.097%
First Mutual Water Company	15.62	5.25	0.007%
G. Lane Family (Frank and Yvonne Lane 1993 Family Trust, Little Rock Sand and Gravel, Inc., George and Charlene Lane Family Trust) [Does not include water pumped on land leased to Granite Construction]	1402.00	773.00	1.094%

**Judicial Council Coordination
 Proceeding No. 4408
 Santa Clara Case No.: 1-05-CV-049053**

Producer Name	Pre-Rampdown Production	Overlying Production Rights	Percentage Share of Adjusted Native Safe Yield
Gailen W. Kyle and Julie Kyle, Trustees of The Kyle Revocable Living Trust	9275.00	3670.00	5.192%
Gary Van Dam, Gertrude Van Dam, Delmar Van Dam, Delmar D. Van Dam and Gertrude J. Van Dam, as Trustees of the Delmar D. and Gertrude J. Van Dam Family Trust – 1996, Craig Van Dam, Marta Van Dam, High Desert Dairy Partnership, High Desert Dairy	9931.50	3215.00	4.548%
Gene Bahlman	5.25	5.00	0.007%
Gorrindo Resourceful LLC	629.00	629.00	0.890%
Granite Construction Company (Big Rock Facility)	126.00	126.00	0.178%
Granite Construction Company (Little Rock Sand and Gravel, Inc.)	400.00	234.00	0.331%
H & N Development Co. West Inc.	1799.75	808.00	1.143%
Irma Ann Carle Trust, Irma-Anne Carle, Trustee	1.00	1.00	0.001%
James and Elizabeth Bridwell	1.00	1.00	0.001%
James M. Leer, III and Diana Leer	1.00	1.00	0.001%
Jane Healy and Healy Enterprises Inc.	700.00	700.00	0.990%
Jeffrey and Nancee Siebert	200.00	106.00	0.150%
John and Adrienne Recca	501.45	251.00	0.355%
John A. Calandri; Calandri Water Company, LLC; John A. Calandri and Shannon C. Calandri as cotrustees of "The John and Shannon Calandri 1992 Trust"; Katherine J. Calandri Nelson, Trustee of "The Katherine J. Calandri Nelson 2008 Trust"	3803.00	1776.00	2.512%
Jose Maritorena, Marie Maritorena, Jean Maritorena, Maritorena Farms, the Jose Maritorena Living Trust	3800.55	1775.00	2.511%
Land Projects Mutual Water Co.	622.50	613.54	0.868%
Landale Mutual Water Co.	157.75	155.57	0.220%
Landinv Inc	2000.00	969.00	1.371%
Lands of Promise Mutual Water Company	64.61	21.69	0.031%
LAURA GRIFFIN, trustee of the FAMILY BYPASS TRUST created under the LEONARD W. GRIFFIN AND LAURA GRIFFIN TRUST, dated July 9, 1993	1170.00	668.00	0.945%
Lawrence Dean Evans, Jr. and Susan Evans	1.00	1.00	0.001%
Lawrence J. Schilling and Mary P. Schilling, Trustees of the L&M Schilling 1992 Family Trust	4.00	4.00	0.006%
Leah Frankenberg	1.00	1.00	0.001%
Littlerock Aggregate Co., Inc., Holliday Rock Co., Inc.	405.00	151.00	0.214%
Llano Del Rio Water Company	572.65	279.00	0.395%

**Judicial Council Coordination
 Proceeding No. 4408
 Santa Clara Case No.: 1-05-CV-049053**

Producer Name	Pre-Rampdown Production	Overlying Production Rights	Percentage Share of Adjusted Native Safe Yield
Llano Mutual Water Company	0.00	0.00	0.000%
Lilia Mabel Selak, TTEE; Barbara Aznarez Decd Trust and Selak, Mabel Trust	150.00	150.00	0.212%
Marie A. Unini and Robert J. LeClair	1.00	1.00	0.001%
Mark W. and Nancy L. Benz	1.00	1.00	0.001%
Michael and Dolores A. Weatherbie	1.00	1.00	0.001%
Miracle Improvement Corporation dba Golden Sands Mobile Home Park dba Golden Sands Trailer Park	45.40	27.00	0.038%
Northrop Grumman Systems Corporation	2.00	2.00	0.003%
NRG Solar Alpine, LLC	64.21	38.00	0.054%
R AND M RANCH, INC.	1458.00	686.00	0.970%
Randall and Billie Dickey	1.00	1.00	0.001%
Richard Miner	1089.40	999.00	1.413%
Richard Nelson, Willow Springs Co.	180.65	135.00	0.191%
Rosamond High School	586.40	202.23	0.286%
Rosamond Ranch, LP	598.00	598.00	0.846%
Rose Villa Apartments	22.72	7.62	0.011%
Ruth C. Findley	1.00	1.00	0.001%
Sahara Nursery and Farm	22.18	22.00	0.031%
Saint Andrew's Abbey, Inc.	175.00	102.00	0.144%
Sal and Connie Cardile	1.00	1.00	0.001%
Service Rock Products, L.P.	503.00	267.00	0.378%
SGS Antelope Valley Development, LLC	57.00	57.00	0.081%
Shadow Acres Mutual Water Company	52.60	51.74	0.073%
Sheep Creek Water Co.	0.00	0.00	0.000%
Southern California Edison Company	17.75	8.00	0.011%
Denise Godde, Steven F. Godde, Pamela M. Godde and Gary M. Godde; Denise Godde and Steven Godde as Trustees of the D & S Godde Trust	1461.50	683.00	0.966%
Sundale Mutual Water Company	472.23	472.23	0.668%
Sunnyside Farms Mutual Water Company, Inc.	75.40	74.26	0.105%
Suzanne J. Richter	1.00	1.00	0.001%
Tejon Ranchcorp and Tejon Ranch Co.	3414.00	1634.00	2.312%
Barry S., Terry A. & Kathleen M. Munz	5.00	5.00	0.007%
Thomas and Julie Bookman 2007 Trust	272.50	136.00	0.192%
Tierra Bonita Mutual Water Company	40.75	40.32	0.057%
Tierra Bonita Ranch	505.00	430.00	0.608%
Triple M Property Co.	15.00	15.00	0.021%
Turk Trust dated December 16, 1998	1.00	1.00	0.001%

Producer Name	Pre-Rampdown Production	Overlying Production Rights	Percentage Share of Adjusted Native Safe Yield
U.S. Borax	1905.00	1905.00	2.695%
Vulcan Materials Co., Vulcan Lands Inc., Consolidated Rock Products Co., Calmat Land Co., and allied Concrete & Materials	519.10	260.00	0.368%
WAGAS Land Company LLC	984.15	580.00	0.821%
WDS California II, LLC	2397.00	1159.00	1.640%
West Side Park Mutual Water Co.	280.75	276.86	0.392%
White Fence Farms Mutual Water Co.	783.05	772.13	1.092%
William Fisher Memorial Water Company	4.53	4.53	0.006%
60th Street Association Water System	2.16	2.16	0.003%
Totals	105173.92	58270.17	

1
2
3
4
5
6
7
8
9
10
11
12
13
14
15
16
17
18
19
20
21
22
23
24
25
26
27
28

**CONFORMED COPY
OF ORIGINAL FILED
Los Angeles Superior Court**

JUL 18 2011

John A. Clarke, Executive Officer/Clerk

By Raul Sanchez, Dept

SUPERIOR COURT OF CALIFORNIA
COUNTY OF LOS ANGELES

**ANTELOPE VALLEY GROUNDWATER
CASES**

Judicial Council Coordination
Proceeding No. 4408

Included Consolidated Actions:

Lead Case No. BC 325 201

Los Angeles County Waterworks District No.
40 v. Diamond Farming Co.
Superior Court of California
County of Los Angeles, Case No. BC 325 201

**STATEMENT OF DECISION
PHASE THREE TRIAL**

Los Angeles County Waterworks District No.
40 v. Diamond Farming Co.
Superior Court of California, County of Kern,
Case No. S-1500-CV-254-348

Judge: Honorable Jack Komar

Wm. Bolthouse Farms, Inc. v. City of Lancaster
Diamond Farming Co. v. City of Lancaster
Diamond Farming Co. v. Palmdale Water Dist.
Superior Court of California, County of
Riverside, consolidated actions, Case Nos.
RIC 353 840, RIC 344 436, RIC 344 668

Rebecca Lee Willis v. Los Angeles County
Waterworks District No. 40
Superior Court of California, County of Los
Angeles, Case No. BC 364 553

Richard A. Wood v. Los Angeles County
Waterworks District No. 40
Superior Court of California, County of Los

*Antelope Valley Groundwater Litigation (Consolidated Cases)
Los Angeles County Superior Court, Lead Case No. BC 325 201*

1-05-CV-049053

EXHIBIT 5

Judgment and Physical Solution

003838

2
3 The standard for a statement of decision as set forth in Code of Civil Procedure section
4 632 requires a court to explain “. . . the legal and factual basis for its decision as to each of the
5 principal controverted issues at trial. . . .” Case law is clear that a court must provide the factual
6 and legal basis for the decision on those issues only closely related to the ultimate issues on the
7 case. (See *People v. Casa Blanca Convalescent Homes* (1984) 159 Cal. App. 3d 509, 523-524.)
8 It is also clear that a court need not respond to requests that are in the nature of “interrogatories.”
9 (See *id.* at pp. 525-526.)

10 The only issues at this phase of the trial were simply to determine whether the
11 adjudication area aquifer is in a current state of overdraft and as part of that adjudication to
12 determine the safe yield. This Statement of Decision focuses solely on those issues.

13 Cross-complainants Los Angeles County Waterworks District No. 40, City of Palmdale,
14 Palmdale Water District, Littlerock Creek Irrigation District, Palm Ranch Irrigation District,
15 Quartz Hill Water District, California Water Service Company, Rosamond Community Service
16 District, Phelan Piñon Hills Community Services District, Desert Lake Community Services
17 District, North Edwards Water District (collectively, the “Public Water Producers”)¹ brought an
18 action for, *inter alia*, declaratory relief, alleging that the Antelope Valley adjudication area
19 groundwater aquifer was in a state of overdraft and required judicial intervention to provide for
20 management of the water resources within the aquifer to prevent depletion of the aquifer and
21 damage to the Antelope Valley basin.

22 Several of the cross-defendant parties (collectively, the “Land Owner Group”) also
23 sought declaratory relief in their various independent (now coordinated and consolidated)
24 actions.

25
26
27 ¹ The United States and the City of Los Angeles, though not water suppliers in the Antelope Valley adjudication
28 area, joined with the Public Water Producers. Rosamond Community Services District joined with the Land Owner
Group.

1 The first issues to be decided in the declaratory relief cause of action are the issues of
2 overdraft and safe yield. The remaining causes of action and issues are to be tried in a
3 subsequent phase or phases.

4 This Phase Three trial commenced on January 4, 2011 and continued thereafter on
5 various days based upon the needs of the various parties and the Court's availability.
6 Appearances of counsel are noted in the minutes of the Court.

7 At the conclusion of the evidence, the Court offered counsel the opportunity to provide
8 written final arguments and the invitation was declined by all counsel. On April 13, 2011, the
9 Court heard oral argument and the matter was ordered submitted.

10 The Public Water Producers (and others) have alleged that the basin is in a condition of
11 overdraft and have requested that the Court determine a safe yield and consider imposition of a
12 physical solution or other remedy to prevent further depletion of the water resource and
13 degradation of the condition of the aquifer.

14 Several parties in opposition to the request of the Public Water Producers have
15 contended that while there may have been overdraft in the past, currently the aquifer has
16 recovered and is not in overdraft. These same parties contend that it is not possible to establish
17 a single value for safe yield; instead they have requested that the Court determine a range of
18 values for safe yield.

19 The Court concludes that the Public Water Producers have the burden of proof and that
20 the burden must be satisfied for this phase and purpose by a preponderance of the evidence.
21 This burden of proof may or may not be appropriate to other phases of this trial. And since the
22 findings here have no application to other phases, such as prescription or rights of appropriators,
23 and the parties have not briefed those or other issues, the Court makes no conclusions as to what
24 standard of proof might be applicable to such other issues or phases of trial.

25 The law defines overdraft as extractions in excess of the "safe yield" of water from an
26 aquifer, which over time will lead to a depletion of the water supply within a groundwater basin
27 as well as other detrimental effects, if the imbalance between pumping and extraction
28 continues. (*City of Los Angeles v. City of San Fernando* (1975) 14 Cal. 3d 199; *City of*

1 *Pasadena v. City of Alhambra* (1949) 33 Cal. 2d 908, 929; *Orange County Water District v.*
2 *City of Riverside* (1959) 173 Cal. App. 2d 137.) “Safe yield” is the amount of annual
3 extractions of water from the aquifer over time equal to the amount of water needed to recharge
4 the groundwater aquifer and maintain it in equilibrium, plus any temporary surplus. Temporary
5 surplus is defined as that amount of water that may be pumped from an aquifer to make room to
6 store future water that would otherwise be wasted and unavailable for use.

7 Determination of safe yield and overdraft requires the expert opinions of hydrologists and
8 geologists.² Experts in the field of hydrogeology routinely base their opinions and conclusions
9 concerning groundwater basin overdraft on evidence of long-term lowering of groundwater
10 levels, loss of groundwater storage, declining water quality, seawater intrusion (not an issue in
11 this case), land subsidence, and the like. Experts also conduct a sophisticated analysis of
12 precipitation and its runoff, stream flow, and infiltration into the aquifer, including such things as
13 evapotranspiration, water from other sources introduced into the aquifer (artificial recharge), as
14 well as the nature and quantity of extractions from the aquifer and return flows therefrom.

15
16 Generally, neither overdraft nor safe yield can be determined by looking at a
17 groundwater basin in a single year but must be determined by evaluating the basin conditions
18 over a sufficient period of time to determine whether pumping rates have or will lead to
19 eventual permanent lowering of the water level in the aquifer and ultimately depletion of the
20 water supply or other harm. Recharge must equal discharge over the long term. (*City of Los*
21 *Angeles v. City of San Fernando, supra*, 14 Cal. 3rd at pp. 278-279.) But having heard
22 evidence about the aquifer as a whole, the Court is not making historical findings that would be
23 applicable to specific areas of the aquifer or that could be used in a specific way to determine
24 water rights in particular areas of the aquifer.

25
26
27
28 ² All the experts offer estimates. The American Heritage College Dictionary, Third Edition, defines an “estimate”
as, *inter alia*, “[a] rough calculation, as of size” or “[a] judgment based on one’s impressions; an opinion.”

1 The location of the Antelope Valley adjudication area boundaries was the subject of the
2 Phase One and Two trials in this matter. The Court defined the boundaries of the valley aquifer
3 based upon evidence of hydro-connection within the aquifer. If there was no hydro-connectivity
4 with the aquifer, an area was excluded from the adjudication. The degree of hydro-connectivity
5 within the Antelope Valley adjudication area varies from area to area. Some areas seemingly
6 have fairly small or nominal hydro-connectivity but must be included in this phase of the
7 adjudication unless the connection is *de minimis*.³ Pumping in those parts of the aquifer may be
8 shown to have *de minimis* effect on other parts of the aquifer while pumping in other areas
9 within the basin appear to have material impacts on adjacent parts of the basin. All areas were
10 included within the adjudication area because they all have some level of hydro-connection,
11 some more and some less. How to deal with those differences is ultimately a basin management
12 decision that is well beyond the scope of this phase of trial.
13

14 **Overdraft**

15
16
17 The preponderance of the evidence presented establishes that the adjudication area
18 aquifer is in a state of overdraft. Reliable estimates of the long-term extractions from the basin
19 have exceeded reliable estimates of the basin's recharge by significant margins, and empirical
20 evidence of overdraft in the basin corroborates that conclusion. Portions of the aquifer have
21 sustained a significant loss of groundwater storage since 1951. While pumping in recent years
22 has reduced and moderated, the margin between pumping and recharge as cultural conditions
23 have changed and precipitation has increased (with the appearance of wetter parts of the
24 historical cycle), pumping in some areas of the aquifer is continuing to cause harm to the basin.
25 The evidence is persuasive that current extractions exceed recharge and therefore that the basin is
26

27
28 ³ The court may exclude truly *de minimis* connectivity areas based upon evidence in later phases of the trial if
shown to have virtually no impact on the aquifer.

1 in a state of overdraft. Since 1951⁴ there is evidence of periods of substantial pumping
2 (principally agricultural in the early years of the period) coinciding with periods of drought, with
3 almost continuous lowering of water levels and severe subsidence in some areas extending to the
4 present time, with intervals of slight rises in water levels in some areas.

5 Areas of increased pumping, with concomitant lowering of water levels, can have a
6 serious effect on water rights in other areas, caused by cones of depression, which alter natural
7 water flow gradients, causing the lowering of water levels in adjacent areas, with resulting
8 subsidence and loss of aquifer storage capacity. Given population growth, and agricultural and
9 industrial changes, the valley is at risk of being in an even more serious continuing overdraft in
10 the future unless pumping is controlled.

11 While the lowering of current water levels has slowed, and some levels in wells in some
12 areas have risen in recent years, significant areas within the aquifer continue to show declining
13 levels, some slightly so, but many with material lowering of water levels.

14 Thus, the Antelope Valley adjudication area is in a state of overdraft based on estimates
15 of extraction and recharge, corroborated by physical evidence of conditions in the basin, and
16 while the annual amount of overdraft has lessened in recent years with increased precipitation
17 and recharge, the effects of overdraft remain and are in danger of being exacerbated with
18 increased pumping and the prospective cyclical precipitation fluctuations shown by the historical
19 record. The physical evidence establishes that there was significant subsidence occurring in
20 parts of the adjudication area ranging from two to six feet or more in certain areas of the valley
21 caused by such pumping and that measurable water levels fell in a substantial part of the valley.
22 While some of the ongoing subsidence may be attributable to residual subsidence (from earlier
23 periods of shortfall) that would not seem to be an explanation for the extent of continued
24 subsidence. The evidence establishes that ground water extractions in excess of recharge are a
25 cause as well.
26
27

28 ⁴ Precipitation and well records prior to that year are too sketchy to be relied upon.

1 **Safe Yield**

2
3 A calculation of safe yield is necessary to manage the basin or create a physical solution
4 to a potential or actual continuing overdraft. A determination of safe yield requires an initial
5 determination of average annual natural or native recharge to the aquifer from all sources. The
6 only source of natural or native recharge for the Antelope Valley is precipitation that recharges
7 the aquifer and it is therefore necessary to ascertain average annual precipitation. The
8 calculation of annual average precipitation can only be determined by using a baseline study
9 period that covers precipitation in periods of drought and periods of abundant precipitation over
10 a sufficient period of time that a reliable estimate of average future recharge based on
11 precipitation can be made.

12
13 It has been suggested that safe yield could be based on using shorter base periods or more
14 than one base period, (the total time span of which was considerably less than the 50 year period
15 the Court believes is more credible). If the purpose of selecting a base period is to determine
16 average recharge over time based on precipitation, choosing two consecutive periods of time
17 with two different average numbers would not serve that purpose and would preclude estimating
18 a single safe yield. Likewise, selecting a base period that does not have completely representative
19 precipitation cycles over time would not provide an accurate evaluation of conditions in the
20 valley. A base period that calculates average precipitation over a representative period of time
21 permits reliable predictions about future natural recharge based on regular recurring precipitation
22 cycles. A period of precipitation fluctuations from 1951 to 2005 satisfies that standard. Shorter
23 periods do not.

24 The Court finds that current extraction of water from the aquifer by all pumping ranges
25 from 130,000 to 150,000 acre feet a year, but in any event, is in excess of average annual
26 recharge. The major area of dispute between the parties is the average amount of natural
27 recharge, which also involves disputes concerning return flows, the amount of native vegetation
28 water needs, evapotranspiration, stream flow, runoff, groundwater infiltration, specific yield, lag

1 time, bedrock infiltration, agricultural crop needs, and the like. Other sources of recharge to the
2 basin, including artificial recharge-water pumped into the aquifer from external sources are not
3 in dispute.

4 Evidence established that during the entire historical period presented, populations
5 increased within the valley and water use changed in a variety of ways. There has been a shift in
6 some areas to urban uses and away from agriculture although in recent years agricultural
7 pumping has also increased. The nature of agricultural duties has changed as well. The type of
8 irrigation used by farmers has become more efficient and less water is needed per acre
9 (depending on the crops grown) with more efficient uses of water. But there has also been an
10 increase as well as a change in the nature of the type of agriculture in the valley in material
11 quantities in recent years. More of such changes may occur and it is important to both current
12 and future generations to ensure that the water resources within the basin are managed prudently.

13
14 The Court heard from a very large number of experts, some of whom have provided
15 opinion testimony of what constitutes safe yield. All the experts testifying acknowledged that
16 changes in the selection of a base study period, lag time, agricultural water duties,
17 evapotranspiration, specific yield, runoff quantities, well level contours, bedrock infiltration,
18 return flows, playa evaporation relating to run off and bedrock infiltration, chloride
19 measurements, satellite imaging, and agricultural and municipal pumping estimates, among
20 others, would affect the ultimate opinion of natural recharge and return flows.

21 The opinions of all the experts are estimates, based upon their professional opinion. All
22 of the opinions were critiqued by other experts who often had different opinions. The Court
23 recognizes the imprecision of the various estimates and the fact that an estimate by definition is
24 imprecise. But the fact that estimates lack precision does not mean that the Court cannot rely
25 upon such estimates. The scientific community relies upon such estimates in the field of
26 hydrogeology and the Court must do the same.

27 Reasonable experts can differ as to reasonable estimates of natural recharge and
28 virtually all other components of water budgets, computations of change of storage, and the

1 like, all the while using the same formulae and scientific principles to reach their conclusion.
2 For example, all the experts could agree on the definition of "Darcy's Law" and the physics
3 principle of "conservation of mass" but still reach different conclusions.

4 Some of the experts opined that the basin was not in overdraft and that recharge was in
5 excess of or in balance with extractions so that there was a surplus in the aquifer. One expert
6 opined that loss of storage was merely space for temporary storage. Observable conditions in the
7 valley are inconsistent with those conclusions. If there were a surplus, even in the shortened
8 base periods used by the some experts, there should not be subsidence of land, nor the need to
9 drill for water at deeper and deeper levels in those parts of the aquifer most affected by the
10 overdraft. The physical condition of the valley is inconsistent with those estimates that there is
11 and has been a surplus of water in the aquifer.
12

13 The selection of a safe yield number for an aquifer the size of the Antelope Valley is
14 made difficult because of not only its size but because of the complexity of its geology. As
15 reflected above, hydro-connectivity and conductivity varies considerably between various parts
16 of the aquifer. The hydro-connectivity between some portions of the adjudication area aquifer
17 and others is so slight as to be almost (apparently) nonexistent. Pumping in those areas may
18 have little or no effect on other areas of the aquifer. The Antelope Valley basin is not like a
19 bathtub where lowering and raising of water levels is equal in all parts of the "tub."

20 Therefore, assigning a safe yield number (what quantity of pumping from the basin will
21 maintain equilibrium in the aquifer) may require different numbers for different parts of the
22 aquifer (and clearly may also provide for some level of separate management). No attempt has
23 been made in this phase of trial to define geological differences in the valley that would justify
24 different safe yield numbers for different parts of the valley in light of the decision in Phase Two
25 regarding connectivity (the Phase Two trial focused on hydro-connectivity for purposes of
26 determining necessary parties to the action).
27


28 Weighing the various opinions of the experts, however, the Court finds by a
preponderance of the evidence that conservatively setting a safe yield at 110,000 acre feet a

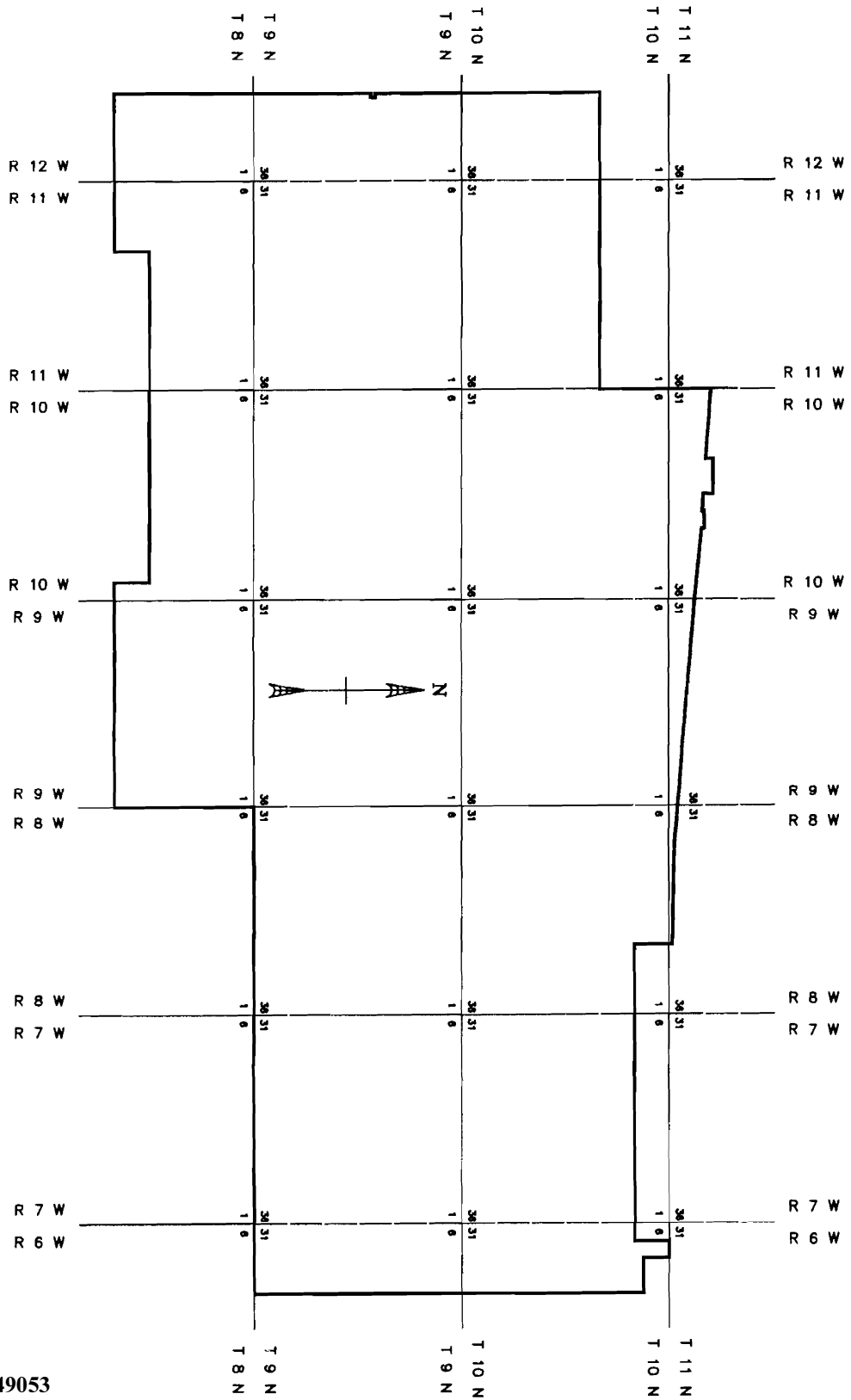
1 year will permit management of the valley in such a way as to preserve the rights of all parties
2 in accordance with the Constitution and laws of the State of California. Some portions of the
3 aquifer receive more recharge than others and pumping requirements vary. These differences
4 require management decisions that respect the differences in both the geology and the cultural
5 needs of the diverse parts of the valley.

6 It should not be assumed that the safe yield management number may not change as
7 climate circumstances and pumping may change, or as the empirical evidence based on
8 experience in managing the basin suggests it is either too high or too low.
9

10
11 **JUL 13 2011**

12 Dated: _____

13 
14 _____
15 Hon. Jack Komar
16 Judge of the Superior Court
17
18
19
20
21
22
23
24
25
26
27
28



0 3 6 9 12
 NOT TO SCALE: BAR SCALE BELOW IS APPROXIMATE ONLY.
 Schematic
 SCALE IN MILES

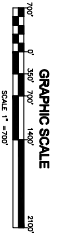
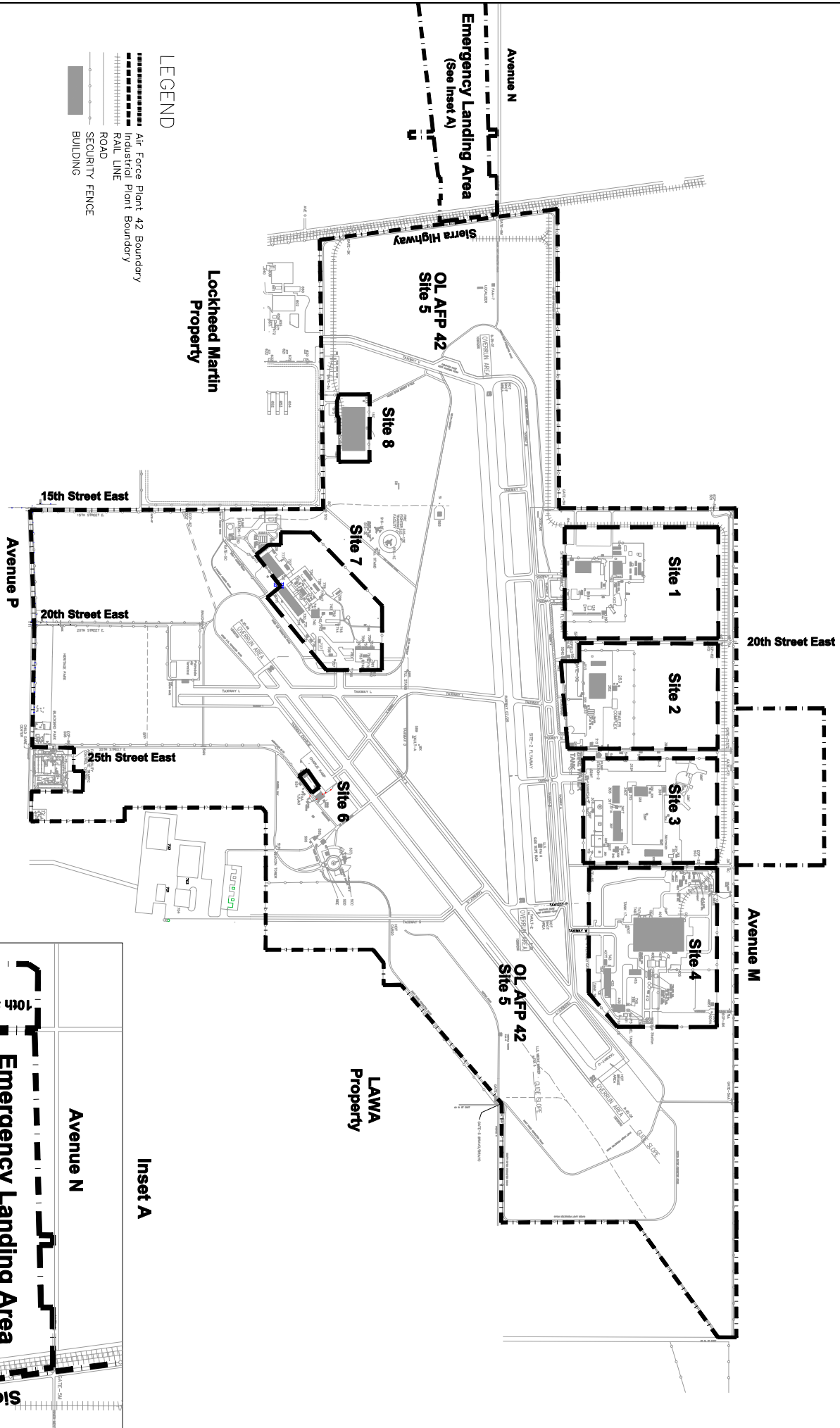
GOVERNMENT OF THE STATE OF CALIFORNIA
 DEPARTMENT OF LAND AND NATURAL RESOURCES
 COUNTY OF LOS ANGELES
 COUNTY CLERK
 EDWARDS AIR FORCE BASE
 LOS ANGELES, KERN & SAN BERNARDINO COUNTIES, CA
 BASE BOUNDARY (PERIMETER) DIAGRAM
 9 JUNE 2000 DWG 273-M-PER

1-05-CV-049053

Judgment and Physical Solution

EXHIBIT 6

003848

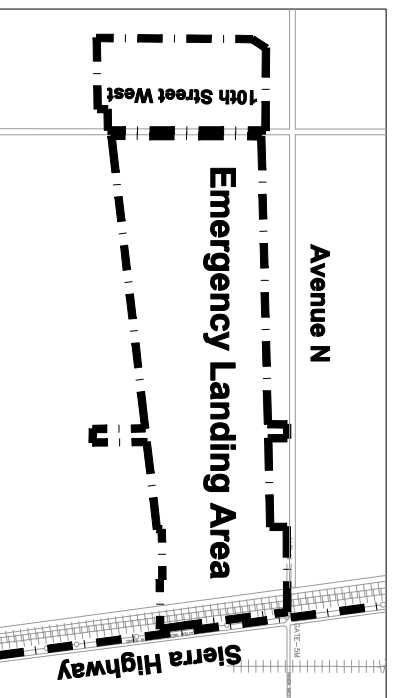


LEGEND

- Air Force Plant 42 Boundary
- - - Industrial Plant Boundary
- RAIL LINE
- ROAD
- SECURITY FENCE
- BUILDING

DATE	REVISIONS	DATE	REVISIONS

PRODUCTION FLIGHT TEST INSTALLATION
UNITED STATES AIR FORCE PLANT NO. 42
 PALMDALE, CALIFORNIA
 1941 to 2011
 OPERATIONS + MAINTENANCE AF PLANT 42 PALMDALE, CALIFORNIA



PREPARED BY: U.S. AIR FORCE PLANT 42 OPERATIONS AND MAINTENANCE MANAGER APPROVED BY: CHIEF ENGINEER, AF PLANT 42	AIR FORCE PLANT 42 OPERATIONS AND MAINTENANCE MANAGER 	Air Force Plant 42 Installation Layout DRAWING NO. 420 DATE 27 May 14 SHEET 1 P4210242-101
--	--	---

Rights to Produce Imported Water Return Flows

A.V. MATERIALS, INC.
ANTELOPE VALLEY COUNTRY CLUB
ANTELOPE VALLEY EAST-KERN WATER AGENCY
ANTELOPE VALLEY WATER COMPANY
ANTELOPE VALLEY WATER STORAGE, LLC
BORON COMMUNITY SERVICES DISTRICT
CALIFORNIA DEPARTMENT OF PARKS
CALIFORNIA WATER SERVICE COMPANY
COPA DE ORO LAND COMPANY, A CALIFORNIA GENERAL PARTNERSHIP
CRYSTAL ORGANIC FARMS, LLC
DESERT LAKE COMMUNITY SERVICES DISTRICT
DIAMOND FARMING COMPANY
EDGEMONT ACRES MWC
EL DORADO MUTUAL WATER COMPANY
EYHERABIDE, RAY/EYHERABIDE SHEEP CO.
GEORGE LANE, AS TRUSTEE OF THE GEORGE AND CHARLENE LANE
FAMILY TRUST, DATED 12/19/2007
GOODE, FORREST G. 1998 TRUST
GRANITE CONSTRUCTION COMPANY
GRIMMWAY ENTERPRISES, INC.
H & N DEVELOPMENT CO. WEST
HARTER, SCOTT
LANDALE MUTUAL WATER CO.
LITTLEROCK CREEK IRRIGATION DISTRICT
LITTLEROCK SAND AND GRAVEL, INC.
LOS ANGELES COUNTY WATERWORKS DISTRICT NO. 40
PALMDALE WATER DISTRICT
PALM RANCH IRRIGATION DISTRICT
QUARTZ HILL WATER DISTRICT
ROSAMOND COMMUNITY SERVICES DISTRICT

SAINT ANDREW'S ABBEY, INC.

SHADOW ACRES MUTUAL WATER COMPANY.

SUNNYSIDE FARMS MUTUAL WATER COMPANY, INC.

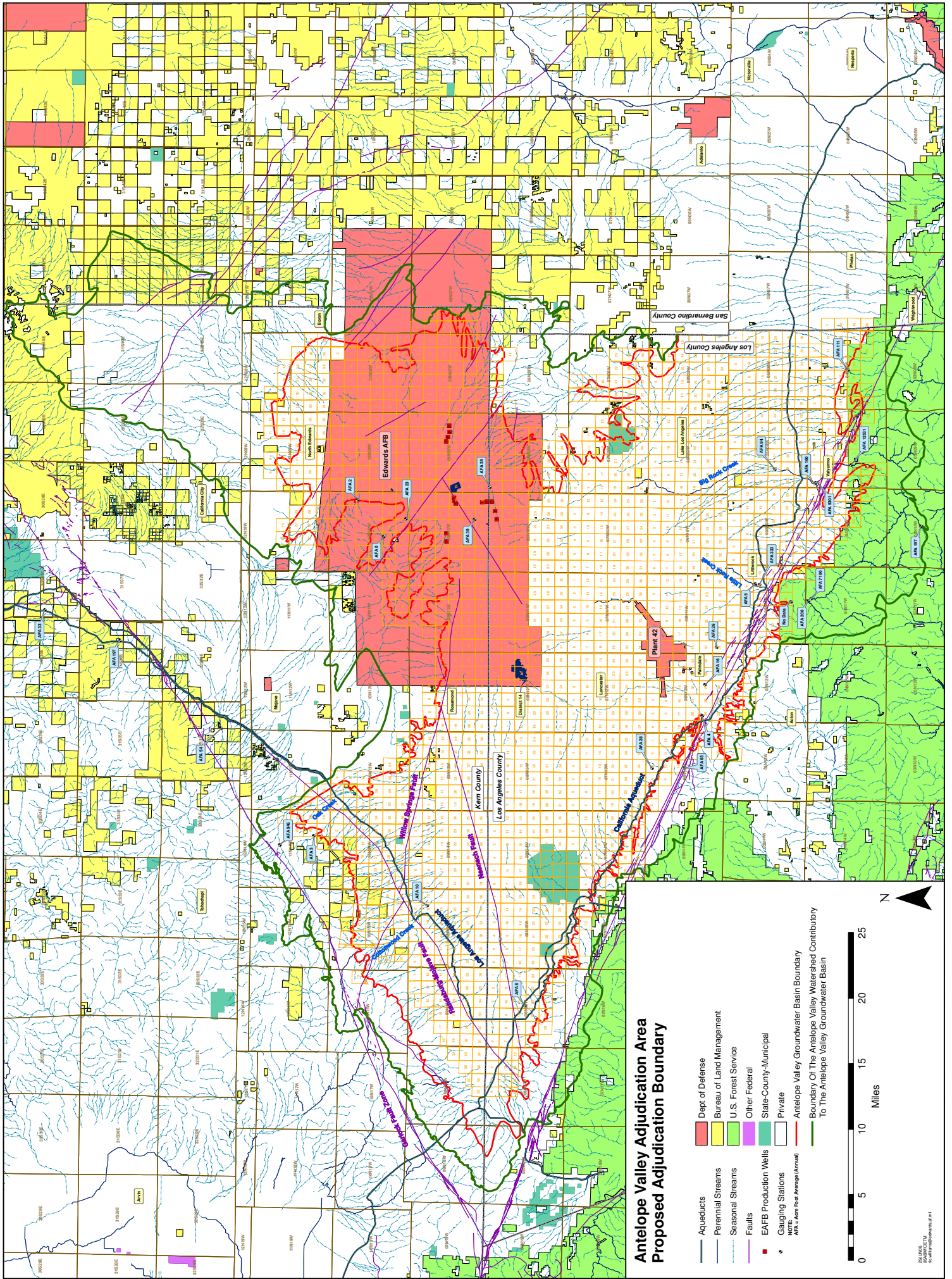
TEJON RANCHCORP/TEJON RANCH CO.

U.S. BORAX & CHEMICAL CO.

WARNACK, A.C. AS TRUSTEE OF THE A.C. WARNACK TRUST

WEST SIDE PARK MUTUAL WATER CO.

WHITE FENCE FARMS MUTUAL WATER CO.



**Antelope Valley Adjudication Area
Proposed Adjudication Boundary**

- Aqueducts
- Perennial Streams
- Seasonal Streams
- Faults
- EAFB Production Wells
- Gauging Stations
- MFE (See Foot Average Annual)
- Dept of Defense
- Bureau of Land Management
- U.S. Forest Service
- Other Federal
- State-County-Municipal
- Private
- Antelope Valley Groundwater Basin Boundary
- Boundary Of The Antelope Valley Watershed Contributory To The Antelope Valley Groundwater Basin



SUBAREAS

