

## 8 List of Exhibits

1. Regional Map
2. Study Area Map with Political Boundaries
3. Physiographic Map
4. Geology Map
5. Groundwater Basins
6. PPHCSD Well Locations
7. Groundwater Level Contour Map – 1985
8. Groundwater Level Contour Map – 2004
9. Groundwater Level Contour Map – 2010

Plate 1. Hydrographs

## 9 List of Tables

1. Summary of Annual Groundwater Production PPHCSD Wells in the Antelope Valley Groundwater Basin
2. Summary of Monthly Groundwater Production PPHCSD Well No. 14



## **10 List of Appendices**

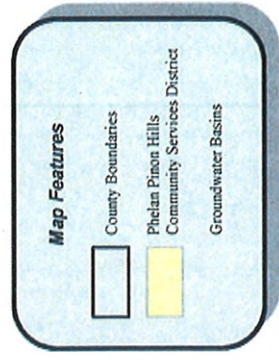
- A. Groundwater Levels Used for Contour Maps
- B. Individual Well Hydrographs

EXHIBIT "C - PART 2"

# Exhibits



**Historical Groundwater  
Production by the Phelan  
Pinon Hills CSD  
Antelope Valley Area of Adjudication**



Basemap Source: [www.esri.com](http://www.esri.com)



**Regional Map**  
Figure 1



13-Jul-10

**Smith Trager LLP  
Phelan Pinon Hills Community Services District**

**Thomas Harder & Co.**  
Groundwater Consulting



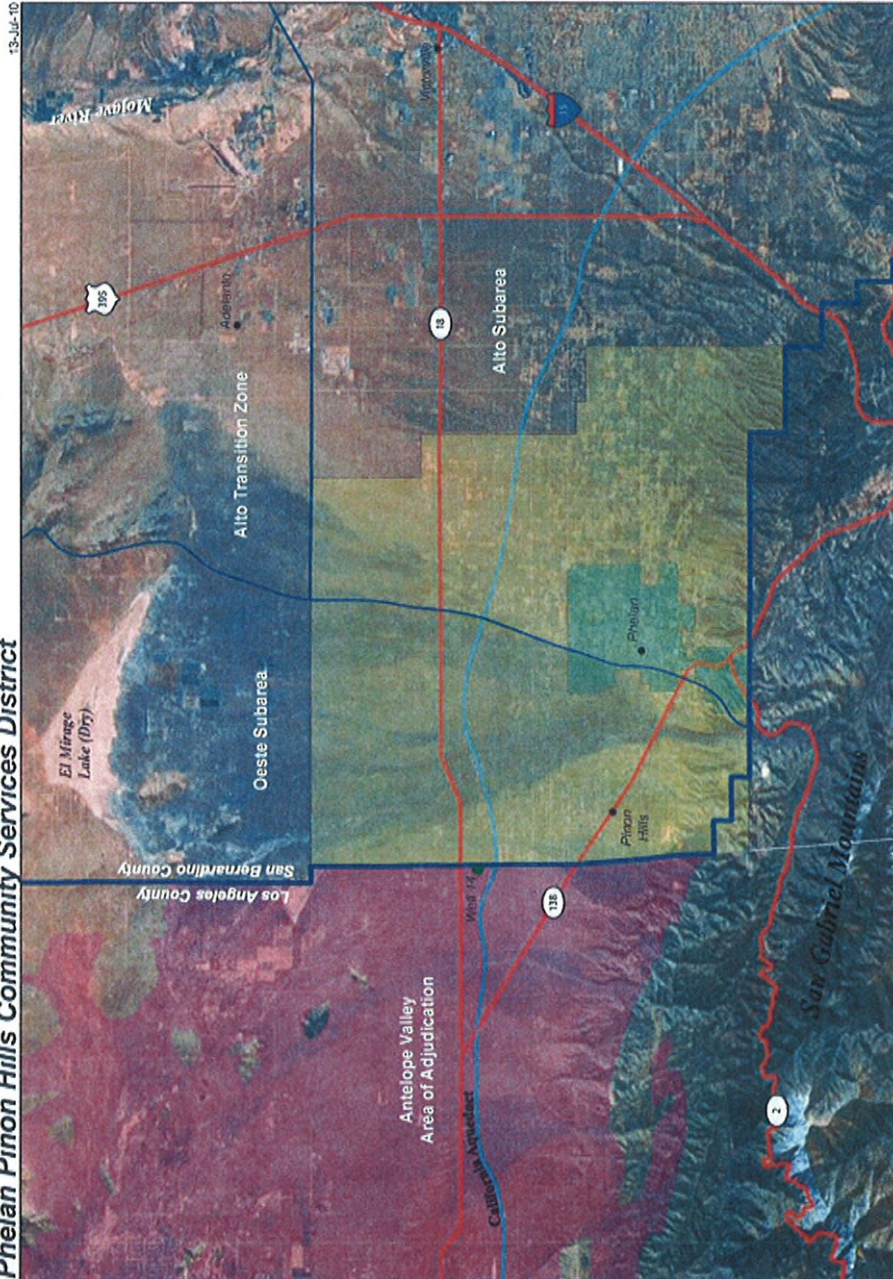
**Historical Groundwater  
Production by the Phelan  
Pinon Hills CSD  
Antelope Valley Area of Adjudication**



Basemap Source: www.esri.com

**Study Area with  
Political Boundaries**  
Figure 2

**Smith Trager LLP  
Phelan Pinon Hills Community Services District**



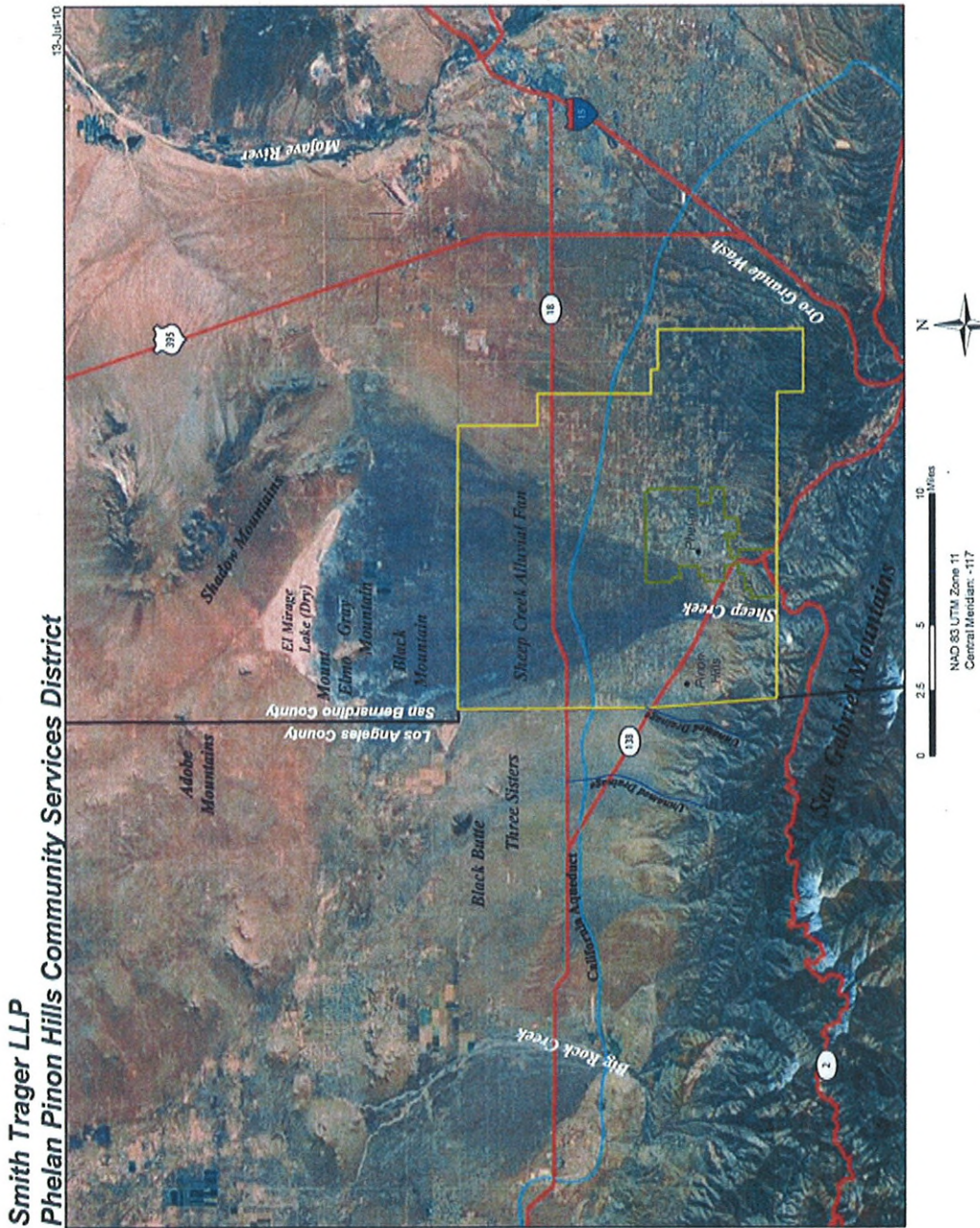
**Thomas Harder & Co.**  
Groundwater Consulting



**Historical Groundwater  
Production by the Phelan  
Pinon Hills CSD  
Antelope Valley Area of Adjudication**



Basemap Source: www.esri.com



**Physiographic Map**  
Figure 3



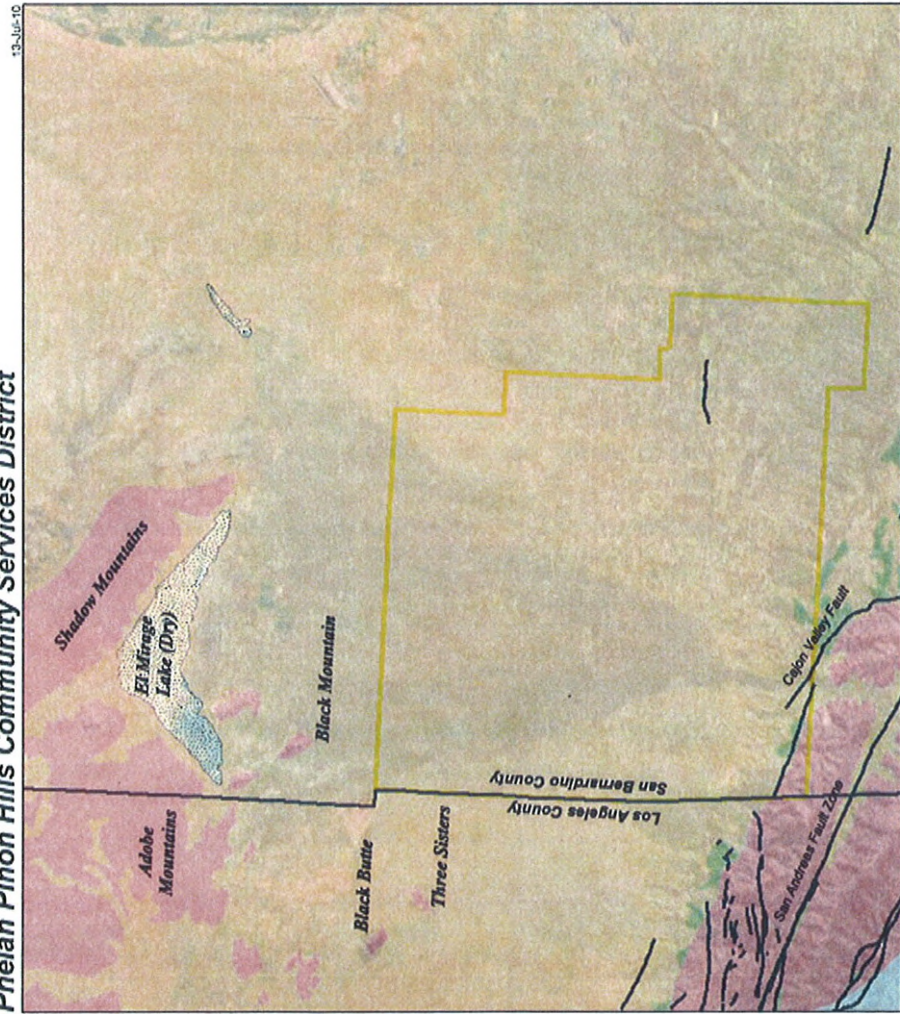
**Historical Groundwater  
Production by the Phelan  
Pinon Hills CSD  
Antelope Valley Area of Adjudication**



Basemap Source: www.esri.com  
Modified from Dibble (1960), Miller and Bedford (2000), and Morton and Miller (2003).

**Geology Map**  
Figure 4

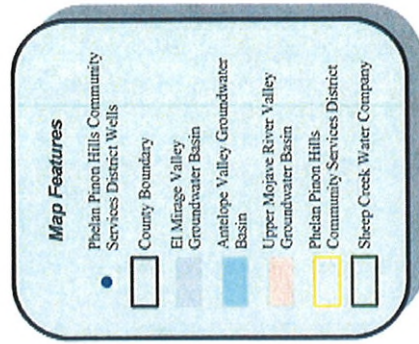
**Smith Trager LLP  
Phelan Pinon Hills Community Services District**



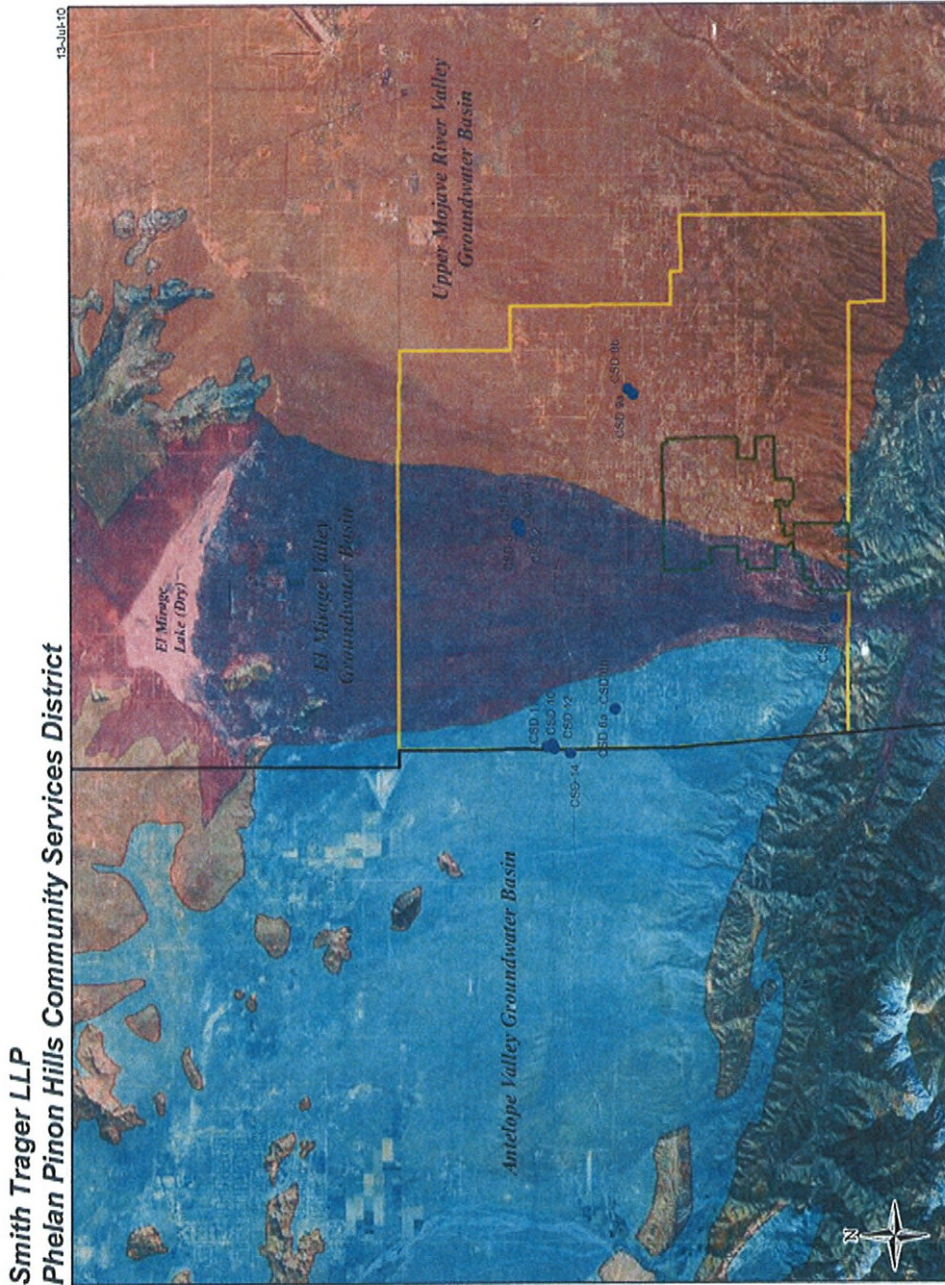
**Thomas Harder & Co.**  
Groundwater Consulting



**Historical Groundwater  
Production by the Phelan  
Pinon Hills CSD  
Antelope Valley Area of Adjudication**



Basemap Source: [www.esri.com](http://www.esri.com)



**Smith Trager LLP  
Phelan Pinon Hills Community Services District**

**Thomas Harder & Co.**  
Groundwater Consulting

**Groundwater Basins**  
Figure 5

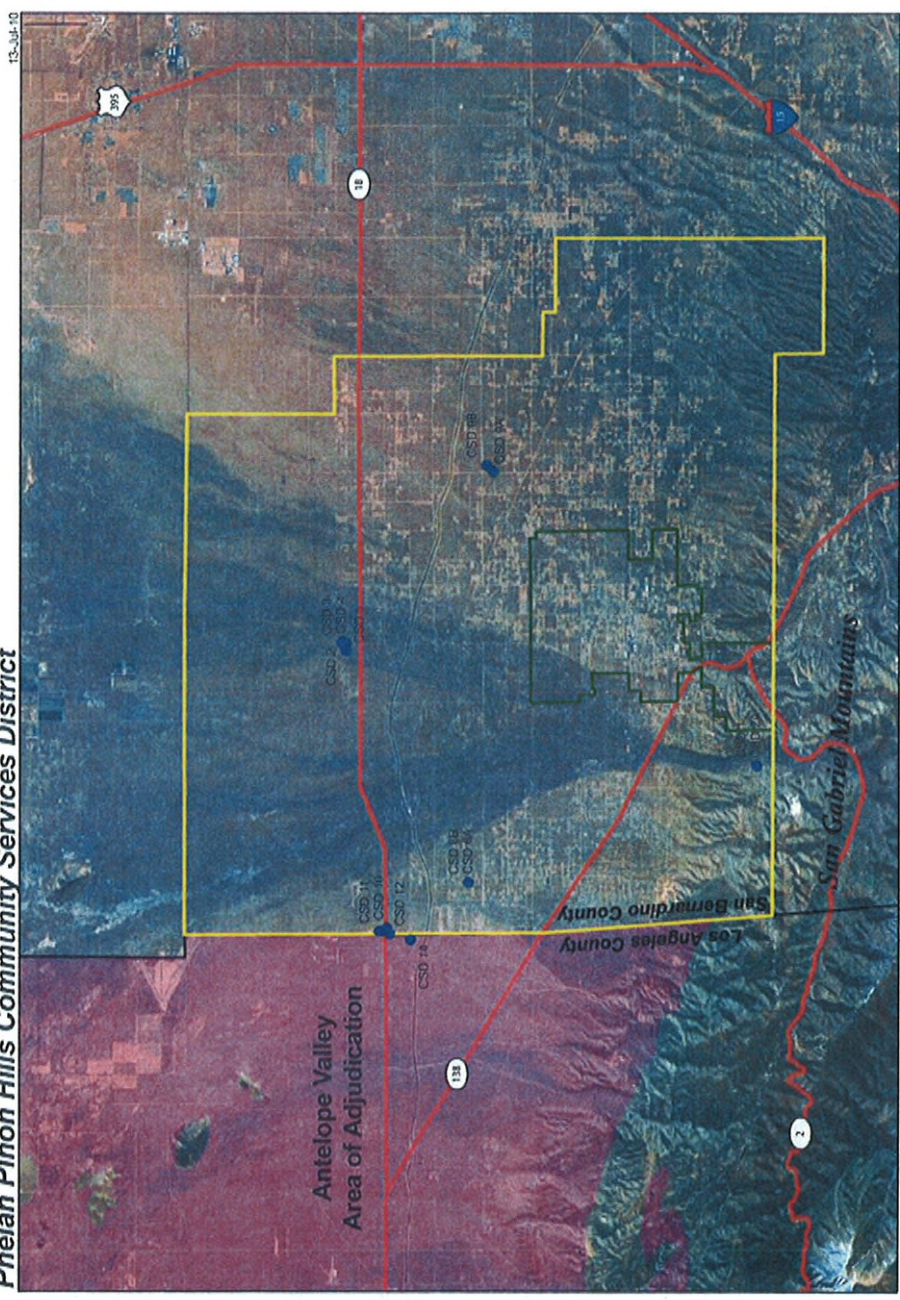


**Historical Groundwater  
Production by the Phelan  
Pinon Hills CSD**  
Antelope Valley Area of Adjudication



Basemap Source: www.esri.com

**Smith Trager LLP  
Phelan Pinon Hills Community Services District**

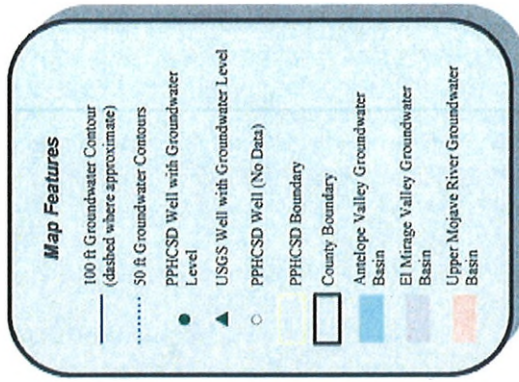


**Thomas Harder & Co.**  
Groundwater Consulting

**Phelan Pinon Hills  
Community Services District  
Well Locations**  
Figure 6



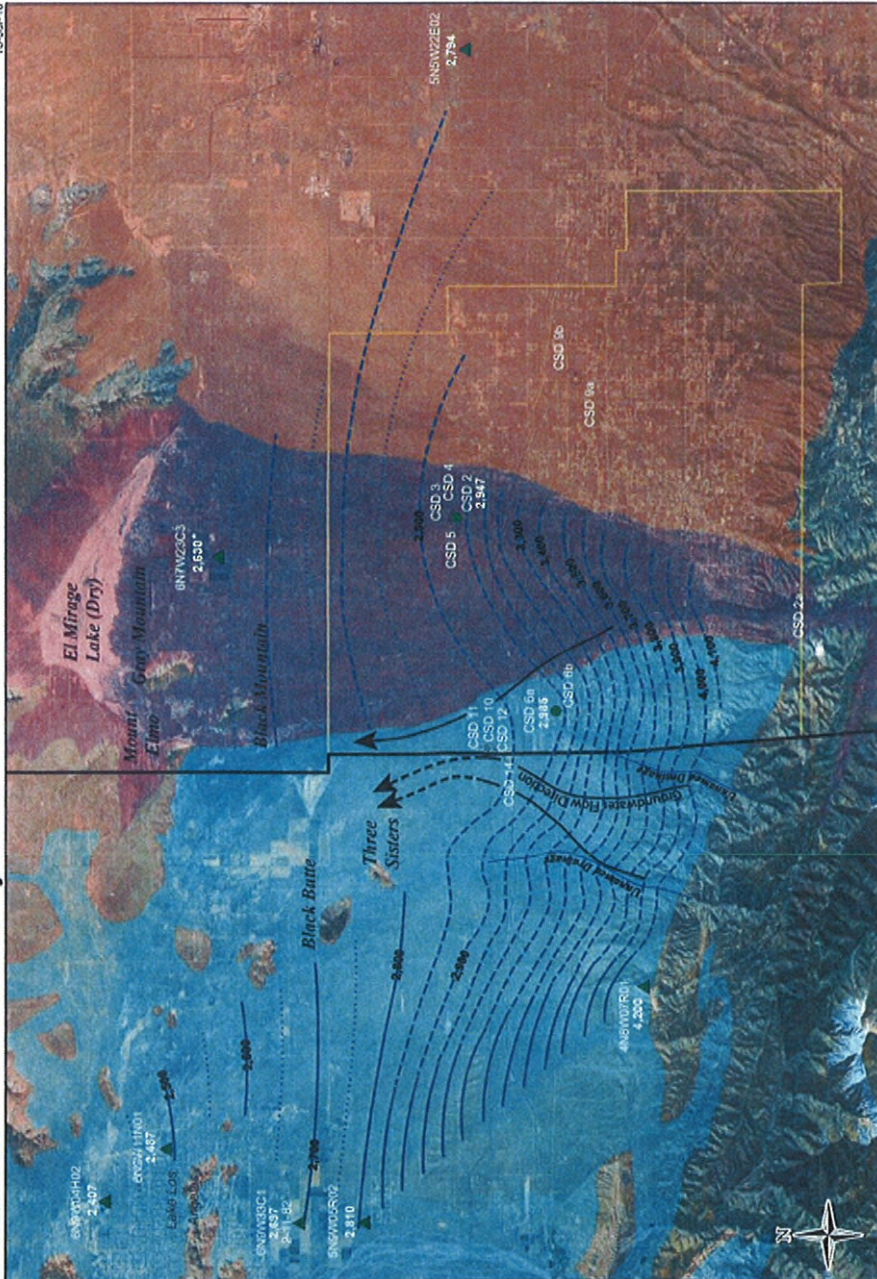
**Historical Groundwater  
Production by the Phelan  
Pinon Hills CSD  
Antelope Valley Area of Adjudication**



Basemap Source: www.esri.com  
 Note: February through September 1985 Data  
 \* Estimated groundwater elevation based on long-term hydrograph

**Groundwater Level  
Contour Map  
1985  
Figure 7**

**Smith Trager LLP  
Phelan Pinon Hills Community Services District**

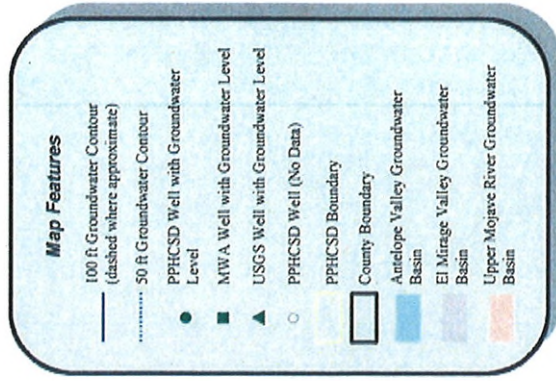


0 2.5 5 10 Miles  
 NAD 83 UTM Zone 11  
 Central Meridian: -117

**Thomas Harder & Co.**  
 Groundwater Consulting



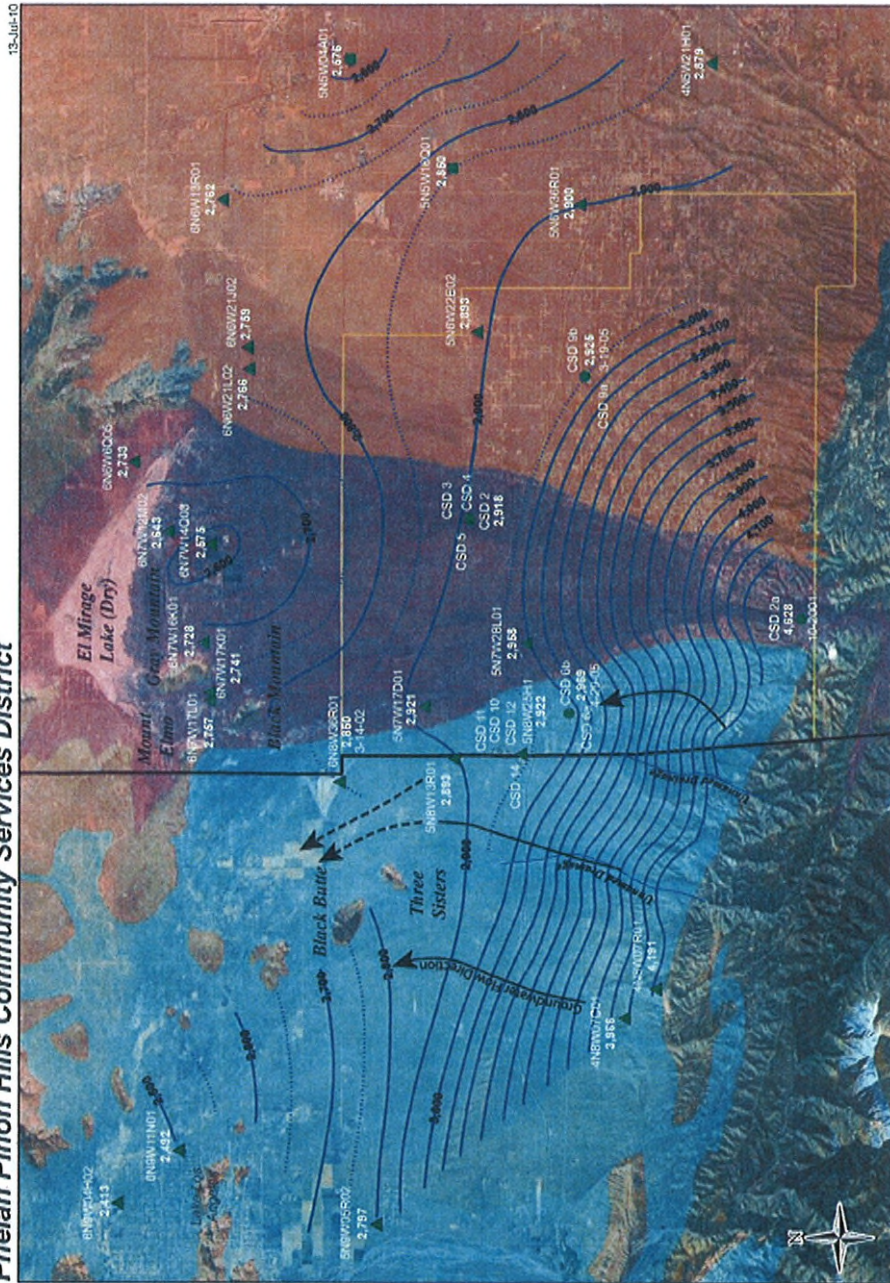
**Historical Groundwater  
Production by the Phelan  
Pinon Hills CSD**  
Antelope Valley Area of Adjudication



Basemap Source: www.esri.com  
Note: March 2004 Data

**Groundwater Level  
Contour Map  
2004**  
Figure 8

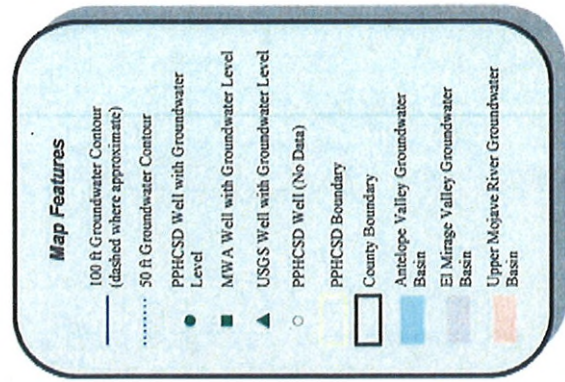
**Smith Trager LLP  
Phelan Pinon Hills Community Services District**



**Thomas Harder & Co.**  
Groundwater Consulting



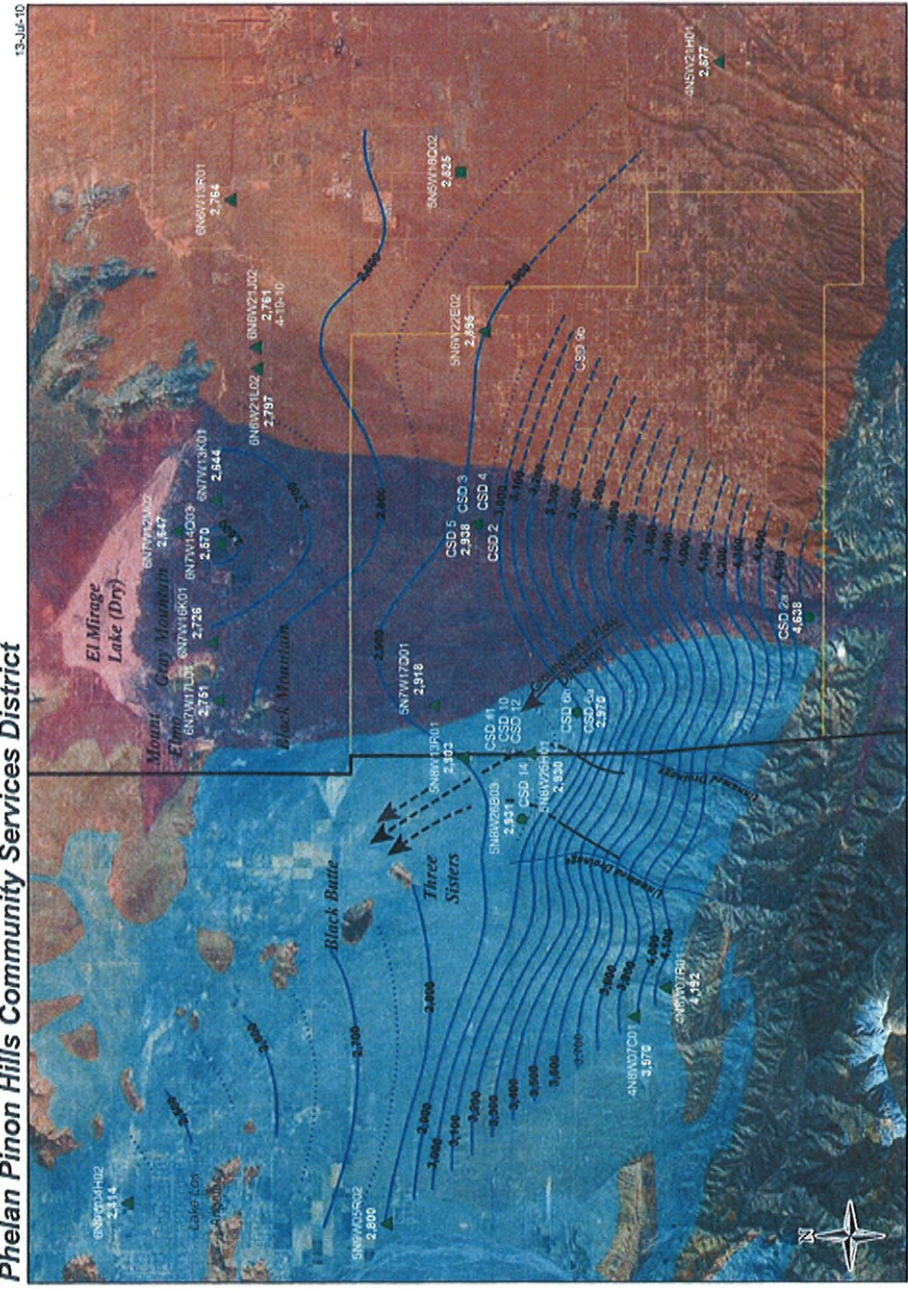
**Historical Groundwater  
Production by the Phelan  
Pinon Hills CSD**  
Antelope Valley Area of Adjudication



Basemap Source: www.esri.com  
Note: March 2010 Data

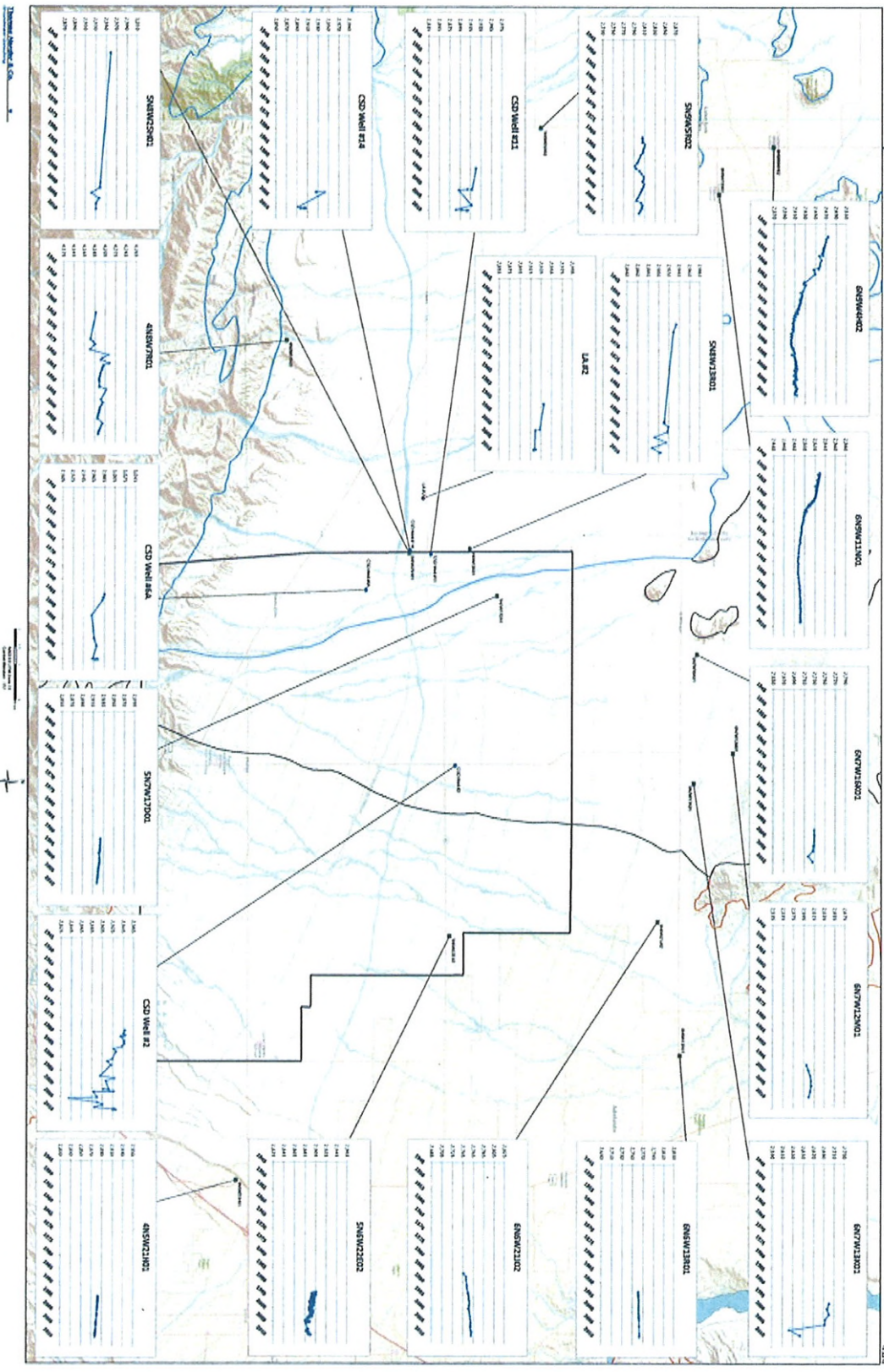
**Groundwater Level  
Contour Map  
March 2010  
Figure 9**

**Smith Trager LLP  
Phelan Pinon Hills Community Services District**



Thomas Harder & Co.  
Groundwater Consulting





Historic and Groundwater  
 Production by Well Stream  
 Phoenix Prison Mills Community Services District



# Tables





**TABLE 1**

**Summary of Annual Groundwater Production  
PPHCSD Wells in the Antelope Valley Groundwater Basin**

Year	Groundwater Production (Acre-ft)										Total	
	Well 6a	Well 6b	Well 10	Well 11	Well 12	Well 14	Well 14	Well 14	Well 14	Well 14		
1986	331.00	0.00	0.00	0.00	0.00	0.00	0.00	0.00	0.00	0.00	0.00	2,317.00
1987	244.00	0.00	0.00	0.00	0.00	0.00	0.00	0.00	0.00	0.00	0.00	244.00
1988	211.77	0.00	0.00	0.00	0.00	0.00	0.00	0.00	0.00	0.00	0.00	211.77
1989	170.70	0.00	0.00	0.00	0.00	0.00	0.00	0.00	0.00	0.00	0.00	170.70
1990	505.47	0.00	0.00	0.00	0.00	0.00	0.00	0.00	0.00	0.00	0.00	505.47
1991	309.85	309.85	0.00	0.00	0.00	0.00	0.00	0.00	0.00	0.00	0.00	619.70
1992	326.00	421.48	126.82	0.00	0.00	0.00	0.00	0.00	0.00	0.00	0.00	874.30
1993	267.92	380.07	286.91	0.00	0.00	0.00	0.00	0.00	0.00	0.00	0.00	934.90
1993-1994	95.00	299.00	286.00	0.00	0.00	0.00	0.00	0.00	0.00	0.00	0.00	680.00
1994-1995	245.00	319.00	106.00	0.00	0.00	0.00	0.00	0.00	0.00	0.00	0.00	670.00
1995-1996	282.00	363.00	397.00	63.00	0.00	0.00	0.00	0.00	0.00	0.00	0.00	1,105.00
1996-1997	244.00	294.00	511.00	85.00	0.00	0.00	0.00	0.00	0.00	0.00	0.00	1,134.00
1997-1998	339.00	258.00	443.00	86.00	0.00	0.00	0.00	0.00	0.00	0.00	0.00	1,126.00
1998-1999	485.00	354.00	446.00	106.00	0.00	0.00	0.00	0.00	0.00	0.00	0.00	1,391.00
1999-2000	449.00	293.00	261.00	56.00	424.00	0.00	0.00	0.00	0.00	0.00	0.00	1,483.00
2000-2001	403.00	341.00	95.00	38.00	523.00	0.00	0.00	0.00	0.00	0.00	0.00	1,400.00
2001-2002	414.00	294.00	246.00	50.00	705.00	0.00	0.00	0.00	0.00	0.00	0.00	1,709.00
2002-2003	315.00	348.00	320.00	74.00	563.00	0.00	0.00	0.00	0.00	0.00	0.00	1,620.00
2003-2004	157.00	237.00	94.00	26.00	1,101.00	0.00	0.00	0.00	0.00	0.00	0.00	1,615.00
2004-2005	220.00	348.00	265.00	41.00	621.00	0.10	0.00	0.00	0.00	0.00	0.00	1,495.10
2005-2006	235.00	155.00	250.00	103.00	584.00	147.86	0.00	0.00	0.00	0.00	0.00	1,474.86
2006-2007	275.00	301.00	383.00	191.00	756.00	38.25	0.00	0.00	0.00	0.00	0.00	1,944.25
2007-2008	294.00	115.00	188.00	89.00	723.00	377.66	0.00	0.00	0.00	0.00	0.00	1,786.66
2008-2009	240.00	381.00	151.00	111.00	619.00	420.78	0.00	0.00	0.00	0.00	0.00	1,922.78



Summary of Monthly Groundwater Production  
Phelan-Pinon Hills Community Services District  
Well No. 14

Year	Month	Monthly Groundwater Production Based on Daily Flow Meter Data (Acre-ft)	
2004	March	0.00	
	April	0.00	
	May	0.00	
	June	0.00	
	July	0.00	
	August	0.00	
	September	0.00	
	October	0.00	
	November	0.00	
	December	0.00	
	<b>Total 2004</b>		<b>0.00</b>
	2005	January	0.00
February		0.00	
March		0.00	
April		0.00	
May		0.00	
June		0.00	
July		0.00	
August		0.00	
September		0.10	
October		0.49	
November		0.52	
December		0.00	
<b>Total 2005</b>			<b>1.11</b>

**Summary of Monthly Groundwater Production  
Phelan-Pinon Hills Community Services District  
Well No. 14**

Year	Month	Monthly Groundwater Production Based on Daily Flow Meter Data (Acre-ft)
2006	January	0.09
	February	3.05
	March	7.89
	April	8.61
	May	10.18
	June	26.85
	July	37.86
	August	29.94
	September	22.38
	October	13.49
	November	3.81
	December	0.00
	<b>Total 2006</b>	<b>164.15</b>
2007	January	0.00
	February	0.00
	March	0.00
	April	0.00
	May	0.00
	June	1.40
	July	19.55
	August	0.00
	September	0.00
	October	0.00
	November	0.00
	December	0.00
	<b>Total 2007</b>	<b>20.95</b>



**Summary of Monthly Groundwater Production  
Phelan-Pinon Hills Community Services District  
Well No. 14**

Year	Month	Monthly Groundwater Production Based on Daily Flow Meter Data (Acre-ft)
2008	January	0.00
	February	0.00
	March	22.46
	April	78.98
	May	79.41
	June	24.81
	July	49.15
	August	76.99
	September	45.87
	October	50.58
	November	64.96
	December	0.06
	<b>Total 2008</b>	
2009	January	0.00
	February	0.00
	March	0.00
	April	0.00
	May	0.00
	June	9.15
	July	100.66
	August	98.73
	September	96.64
	October	85.04
	November	71.65
	December	96.79
	<b>Total 2009</b>	