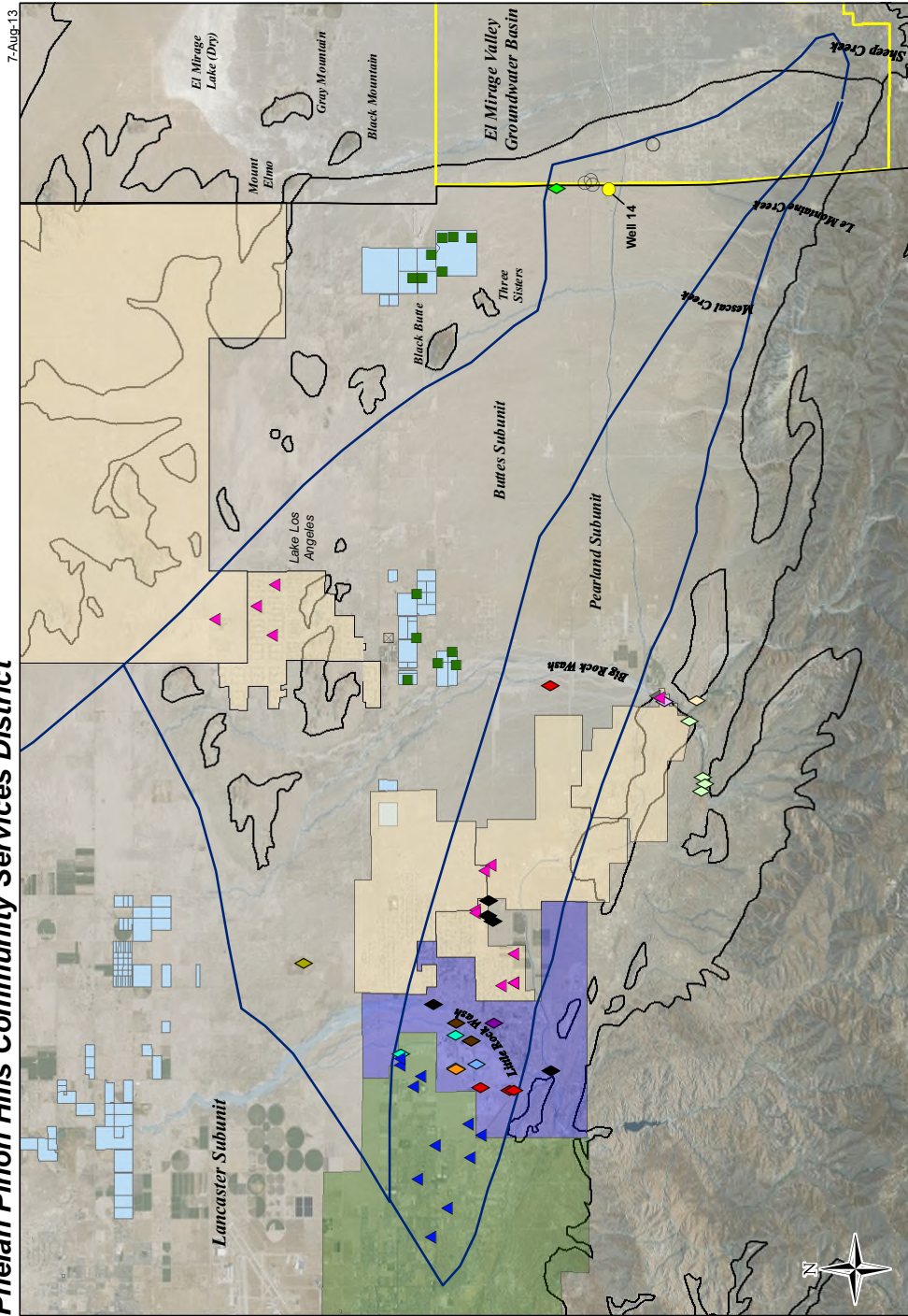


Exhibit 27

Aleshire & Wynder, LLP
Phelan Pinon Hills Community Services District



7-Aug-13

Basemap Source: www.esri.com
 All well locations are approximate

Map Features

- Well Type
- Municipal - PPHCSD
 - Agriculture
 - △ Other Municipal
 - ◇ Private Production
 - Well Owners
 - PPHCSD
 - Los Angeles County Water Works
 - Bolthouse
 - Service Rock Products
 - Granite Construction
 - Sheepcreek Mutual Water Company
 - Little Rock Creek Irrigation District
 - Los Angeles City Department of Airports
 - Frank A. and Yvonne Lane Trust
 - Llano Del Rio Water Company (2 Wells)
 - Blalock Eddy Ranch (Multiple Wells)
 - Palmdale Water District
 - Little Rock Aggregate Co.
 - Little Rock Sand and Gravel
 - Corporation of the Presiding Bishop
 - St. Andrew's Abbey
 - Newhall County Water District
 - Unknown Owner
 - Groundwater Subbasins (Leighton, D.A., and Phillips, S.P., 2003)
 - Bolthouse Properties LLC (Parcels)
 - Los Angeles County Water Works District No. 40 Service Area
 - Little Rock Creek Irrigation District
 - Palmdale Water District Primary Service Area
 - Phelan Pinon Hills Community Services District
 - County Boundary

* Other municipal production is Palmdale Water District, and Los Angeles County Water Works District 40.

Production Wells Within the Buttes and Pearland Subunits