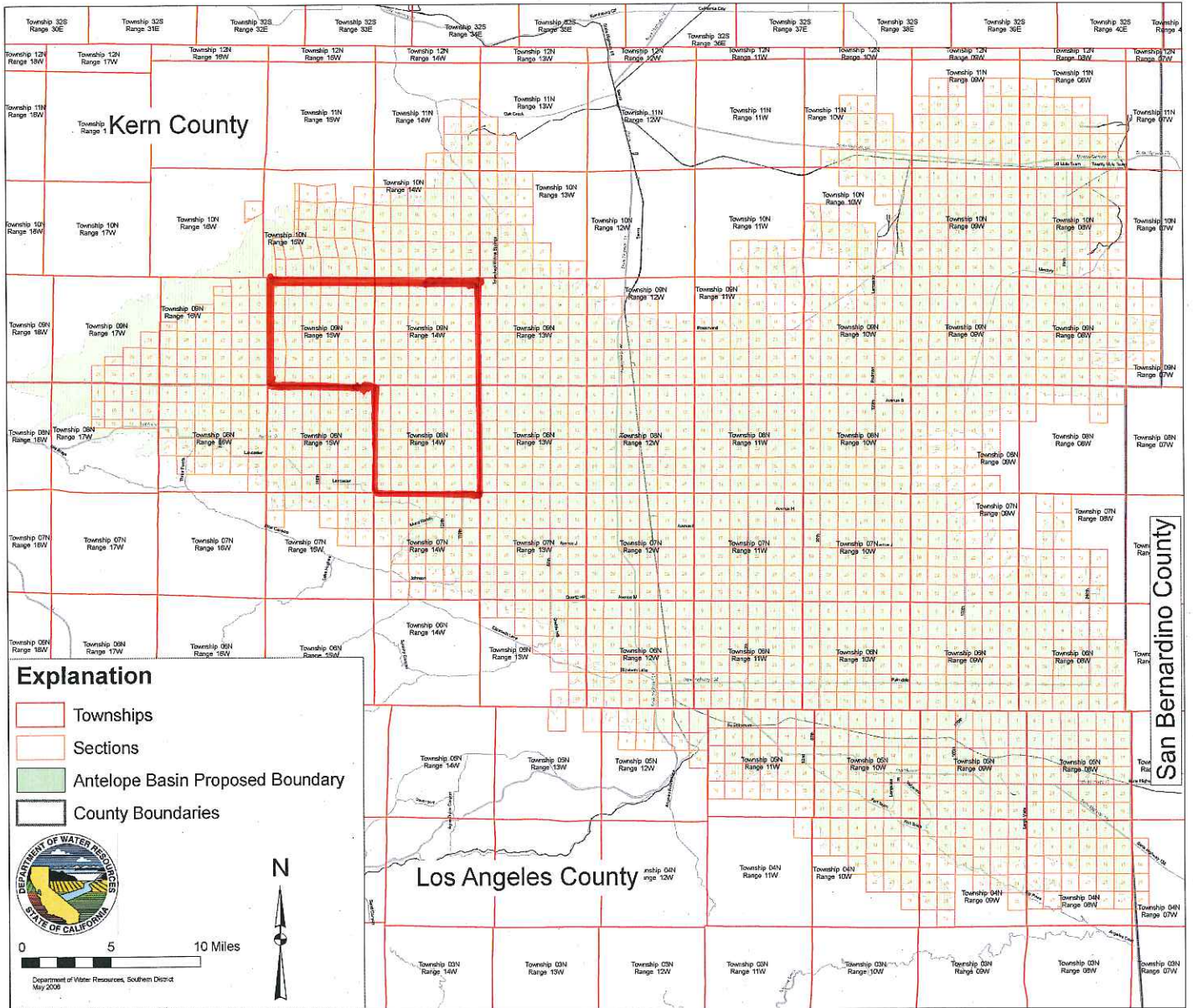


EXHIBIT “A”

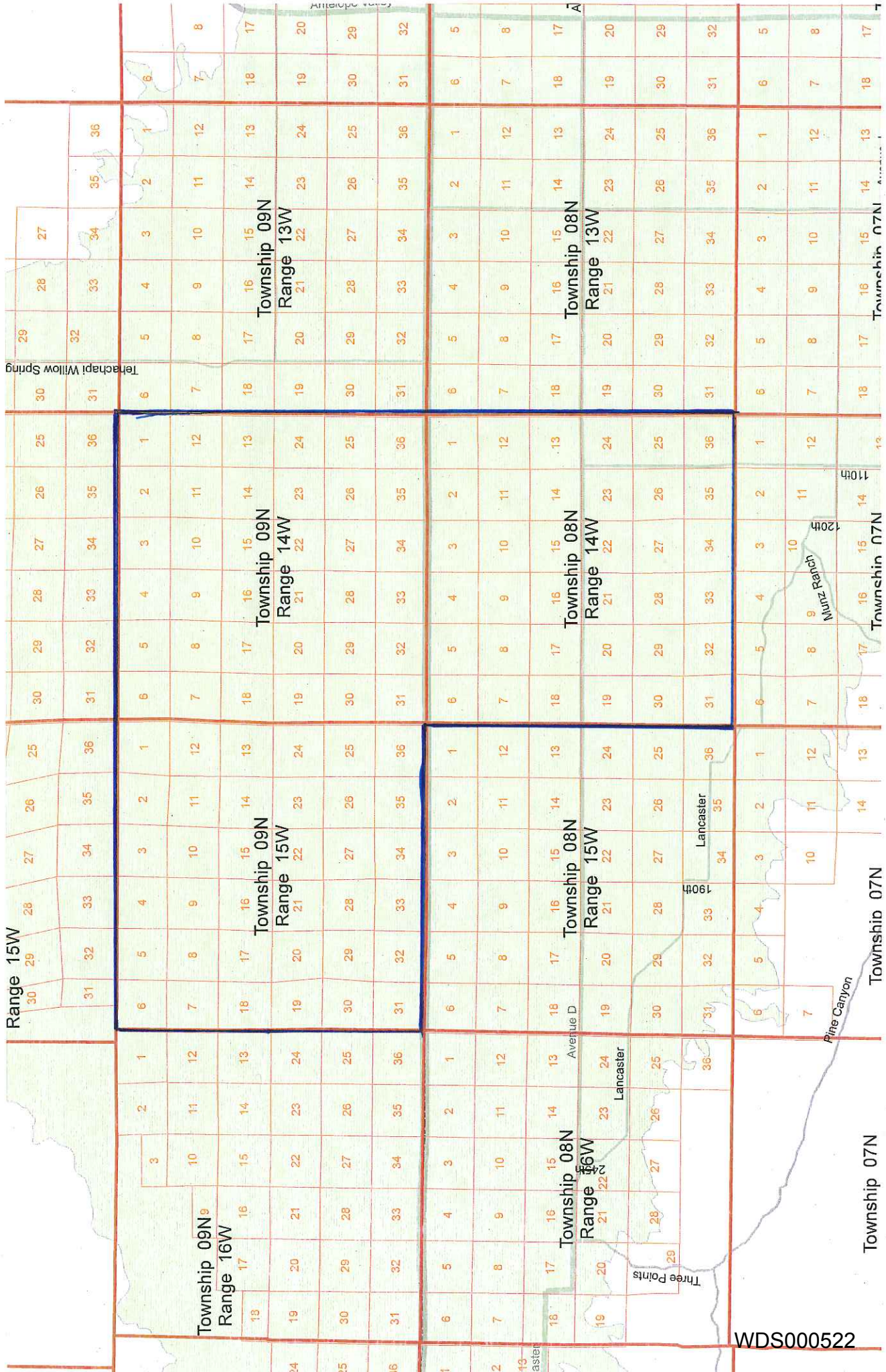
Antelope Valley Adjudication Area Proposed Adjudication Boundary



This map was created using GIS shape files available through agencies of the State of California. Transportation layers were obtained from (www.pds.ca.gov/pds/data/). These files are typically in a "State Albers" projection. The original DWR Groundwater Basin file was obtained at (www.groundwater.dwr.ca.gov/basins/115/basin_map/index.cfm) in a UTM 10, NAD27 projection. The shape file has been reprojected into a UTM11, NAD 83 projection. The Antelope Valley Groundwater basin was isolated into a separate shape file and the boundaries trimmed to the map produced at the Technical Experts Meeting of May 15, 2008. This map was the product of discussion at the Technical Experts for the Antelope Valley Adjudication held in Glendale on May 15, 2008. This map is subject to Protective Order as directed by the court.

This map is a draft and is preliminary and subject to change.
This map was compiled and created by Timothy M. Ross, P.G., CHG of the Department of Water Resources.

Preliminary Draft
Subject to Change
Confidential by Court Protective Order



Range 15W

Township 09N
Range 16W

Township 09N
Range 15W

Township 09N
Range 14W

Township 09N
Range 13W

Township 08N
Range 16W

Township 08N
Range 15W

Township 08N
Range 14W

Township 08N
Range 13W

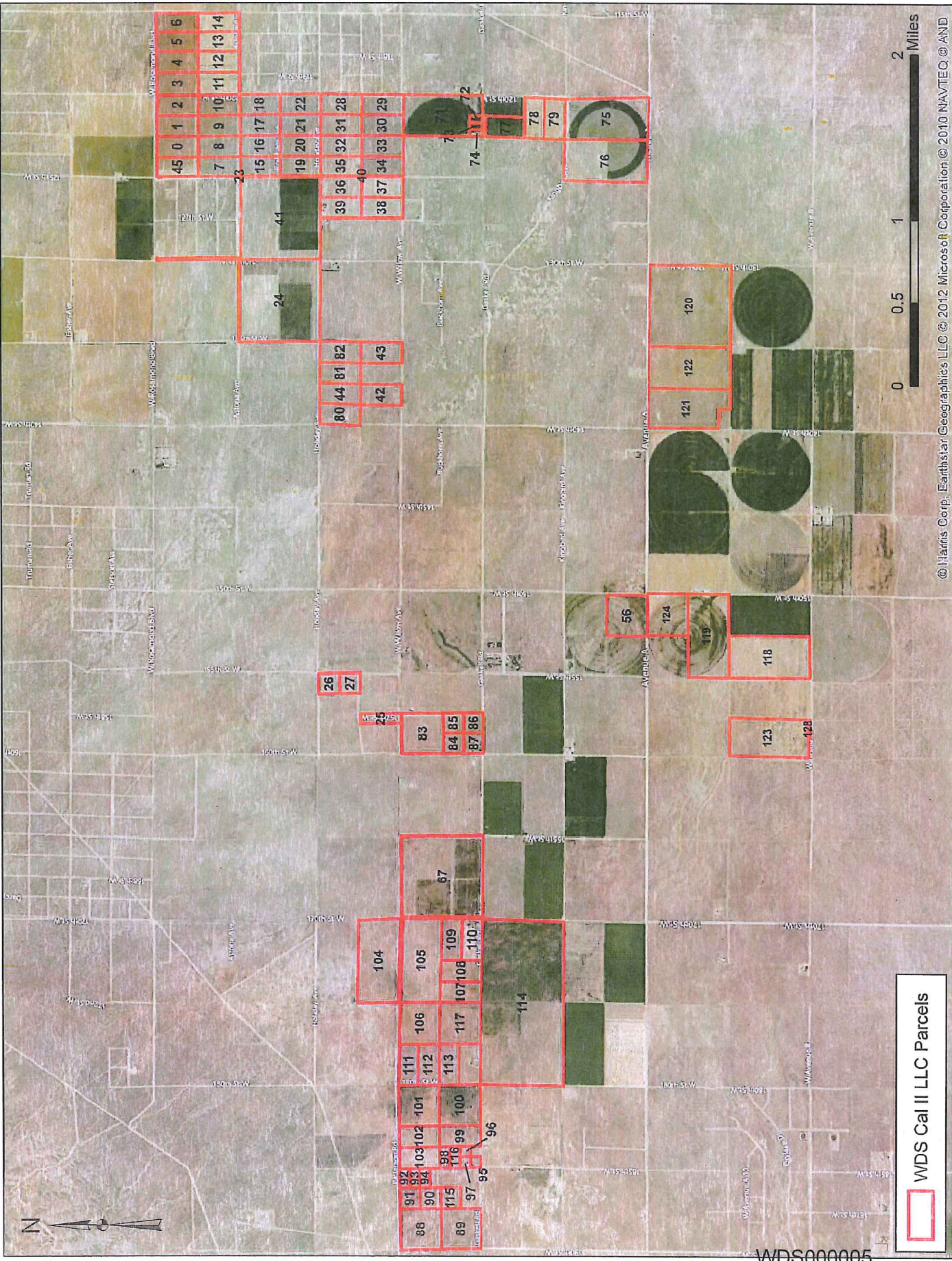
Township 07N

Township 07N

Township 07N

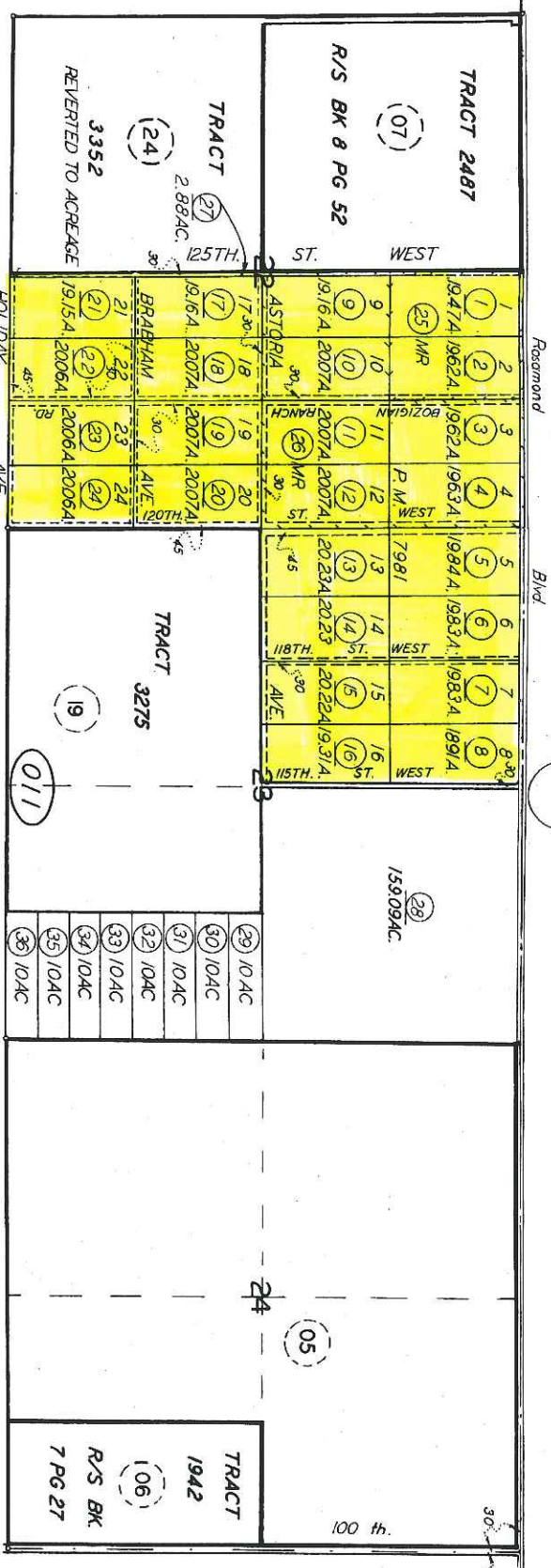
Township 07N

WDS000522



WDS Cal II LLC Parcels

WDS000005



Note: This map is for assessment purposes only. It is not to be construed as portraying legal ownership or divisions of land for purposes of zoning or subdivision law.

ASSESSORS MAP NO. 359-01
COUNTY OF KERN

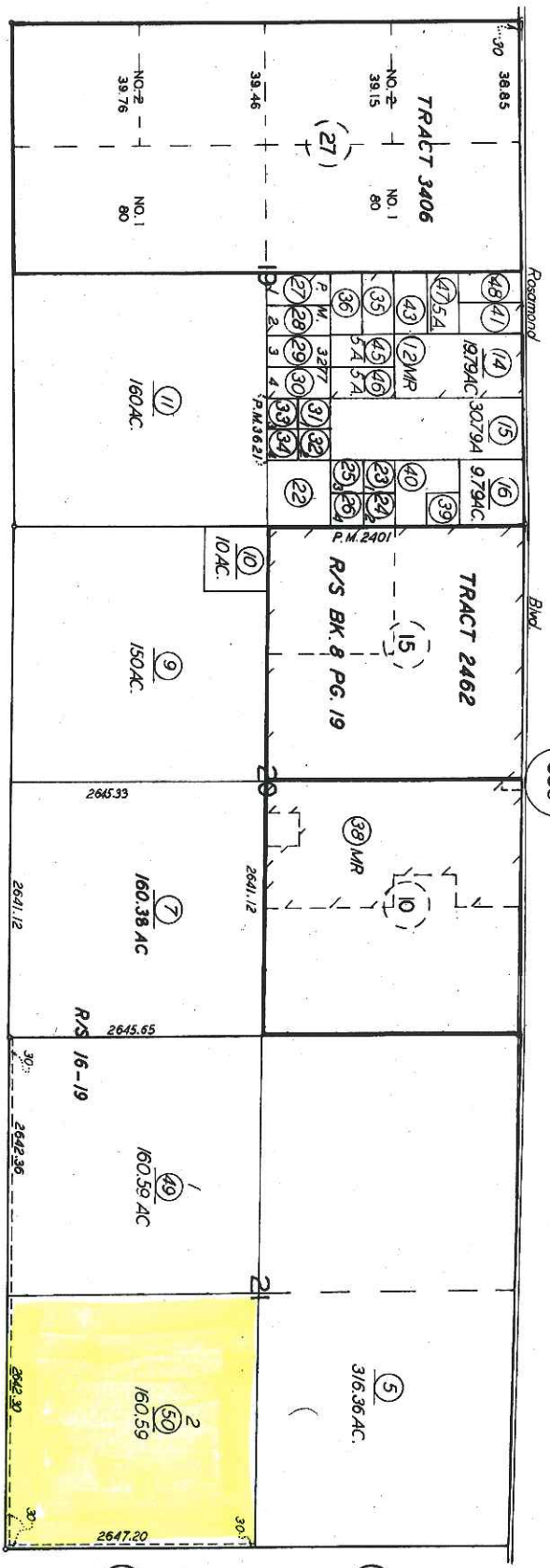
359-02

T.9 N. R.14 W.

SCHOOL DIST. //9-4

359-02

WDS000524



BK 261

BK 358

04

33

24

Note: This map is for assessment purposes only. It is not to be construed as portraying legal ownership or divisions of land for purposes of zoning or subdivision law.

ASSESSORS MAP NO. 359-02
 COUNTY OF KERN

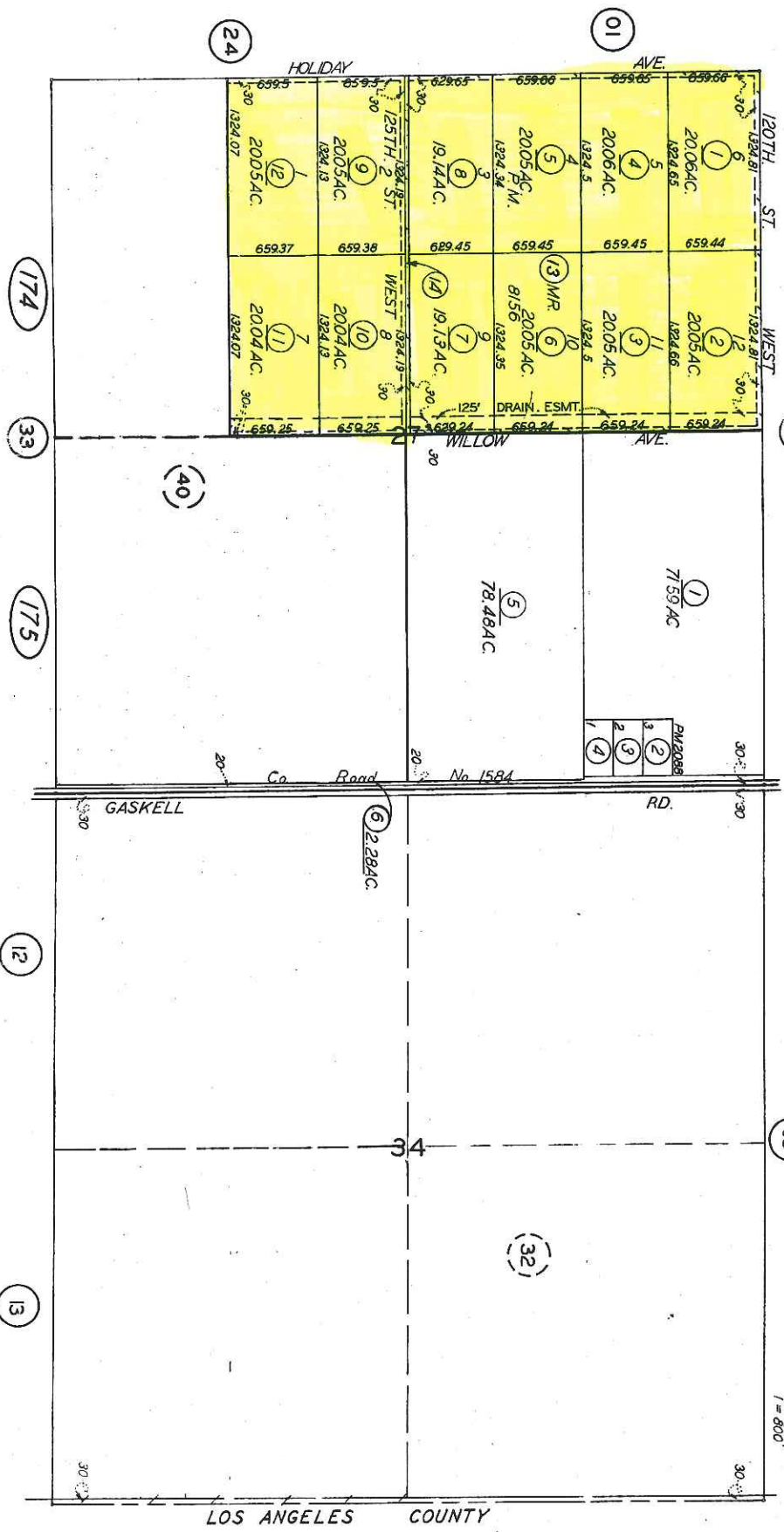
18-40

359-17

T.9N.R.14W.

SCHOOL DIST. 119-4

359-17



Note: This map is for assessment purposes only. It is not to be construed as portraying legal ownership or divisions of land for purposes of zoning or subdivision law.

ASSESSORS MAP NO 359-17
 COUNTY OF KERN

WDS000526

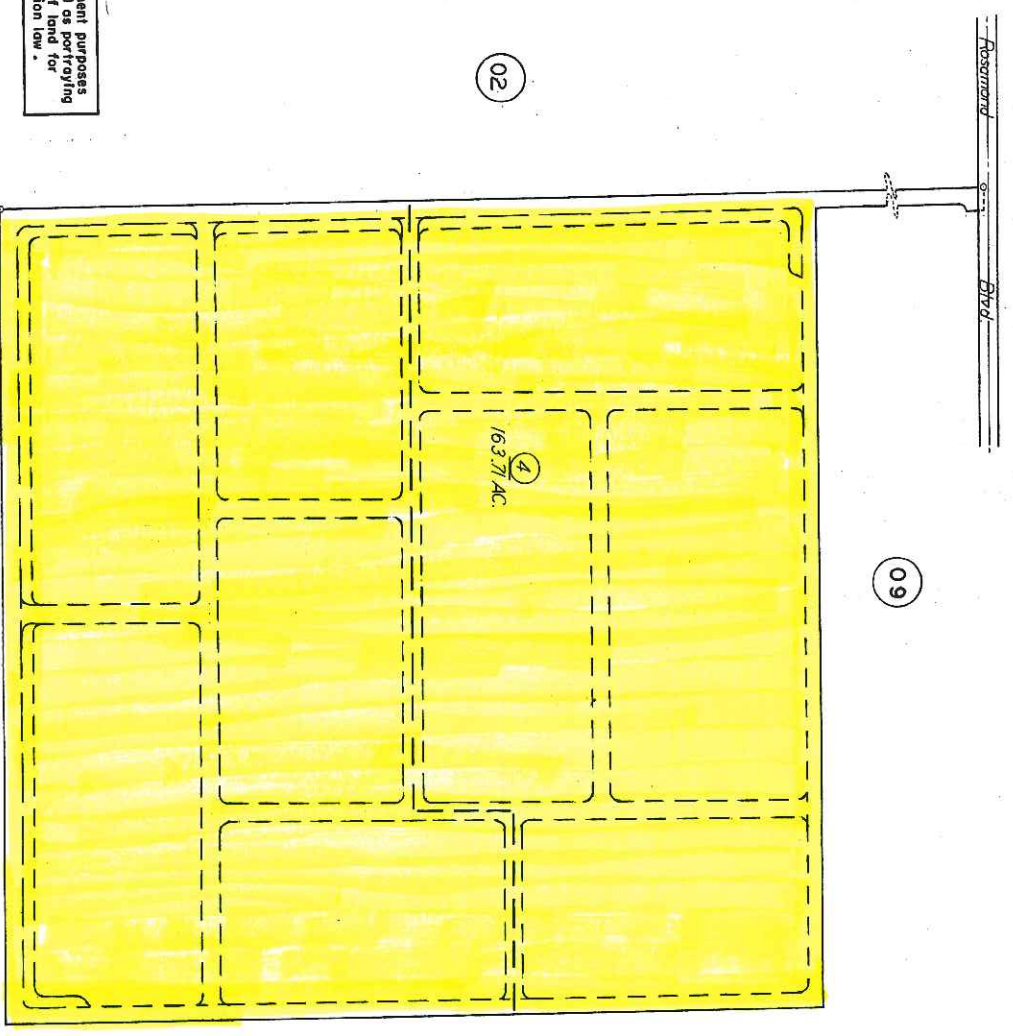
359-24

REVERSION TO ACREAGE OF
TRACT 3352
S.W.1/4 & PTN. OF N.W.1/4 OF SEC.22 T.9N.R.14W.

SCHOOL DIST. 119-4

359-24

WDS000527



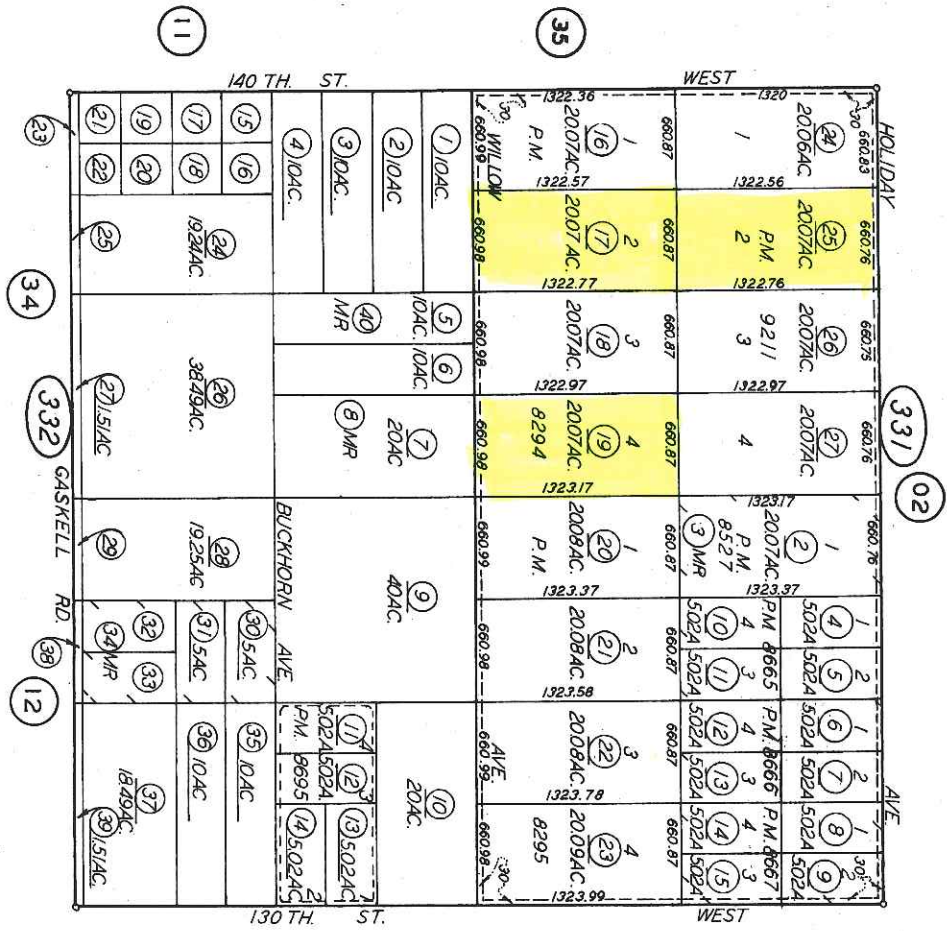
Note: This map is for assessment purposes only. It is not to be construed as a legal conveyance of land for purposes of zoning or subdivision law.

Filed: Oct. 2, 1970
 Reverted: Feb. 10, 1978

ASSESSORS MAP NO. 359-24
 COUNTY OF KERN

41

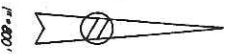
42, 43, 44



Revised: 2/15/12

Note: This map is for assessment purposes only. It is not to be construed as porting legal ownership of land for purposes of zoning or subdivision law.

ASSESSORS MAP NO. 359-33
 COUNTY OF KERN



WDS000528

50

Note: This map is for assessment purposes only. It is not to be construed as portraying legal ownership or divisions of land for purposes of zoning or subdivision law.

BK 261

359-04

T. 9 N. R. 14 W.

SCHOOL DIST. 119-4

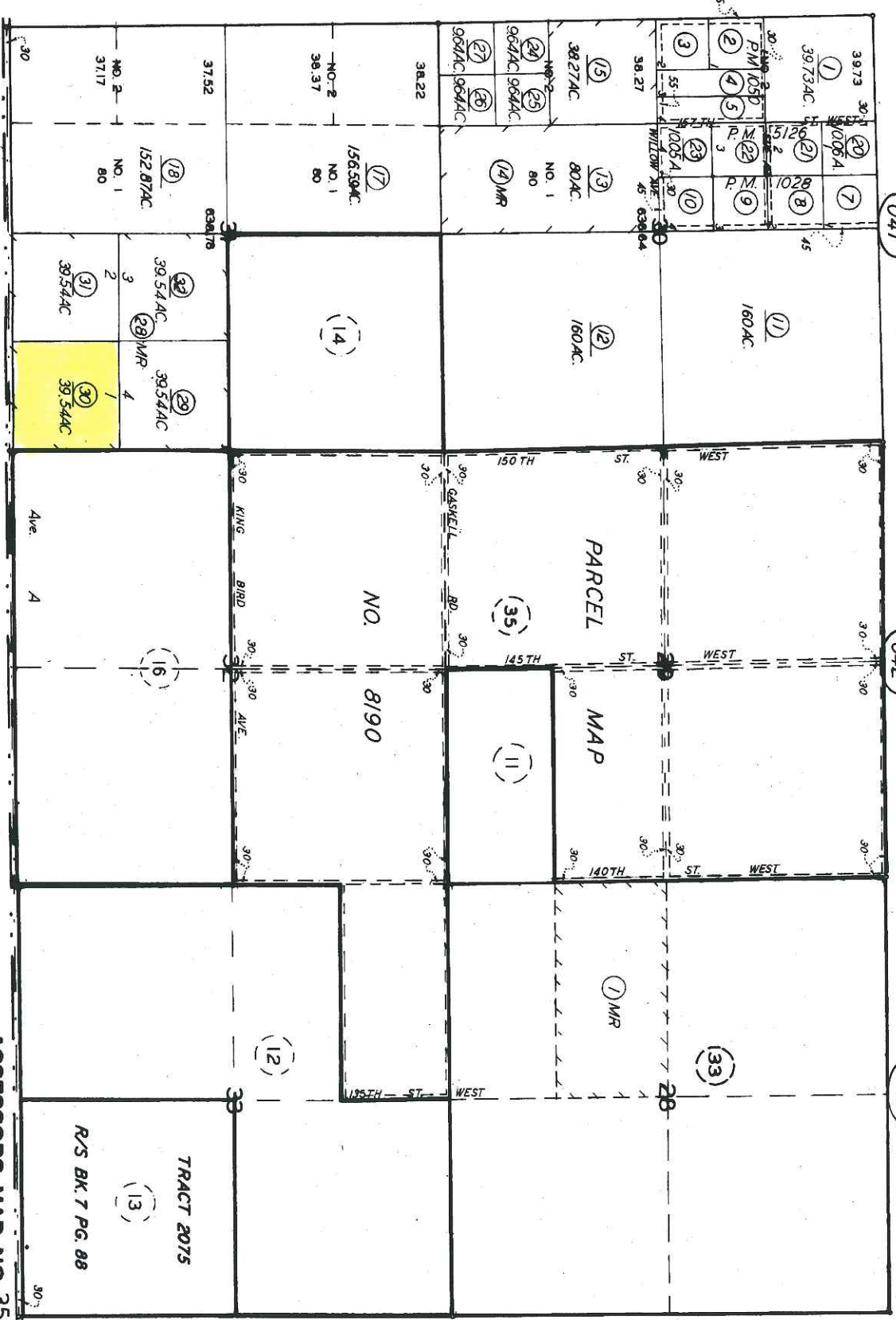
359-04

Revised: Nov. 10, 2011

LOS ANGELES

COUNTY

ASSESSORS MAP NO. 359-04
COUNTY OF KERN

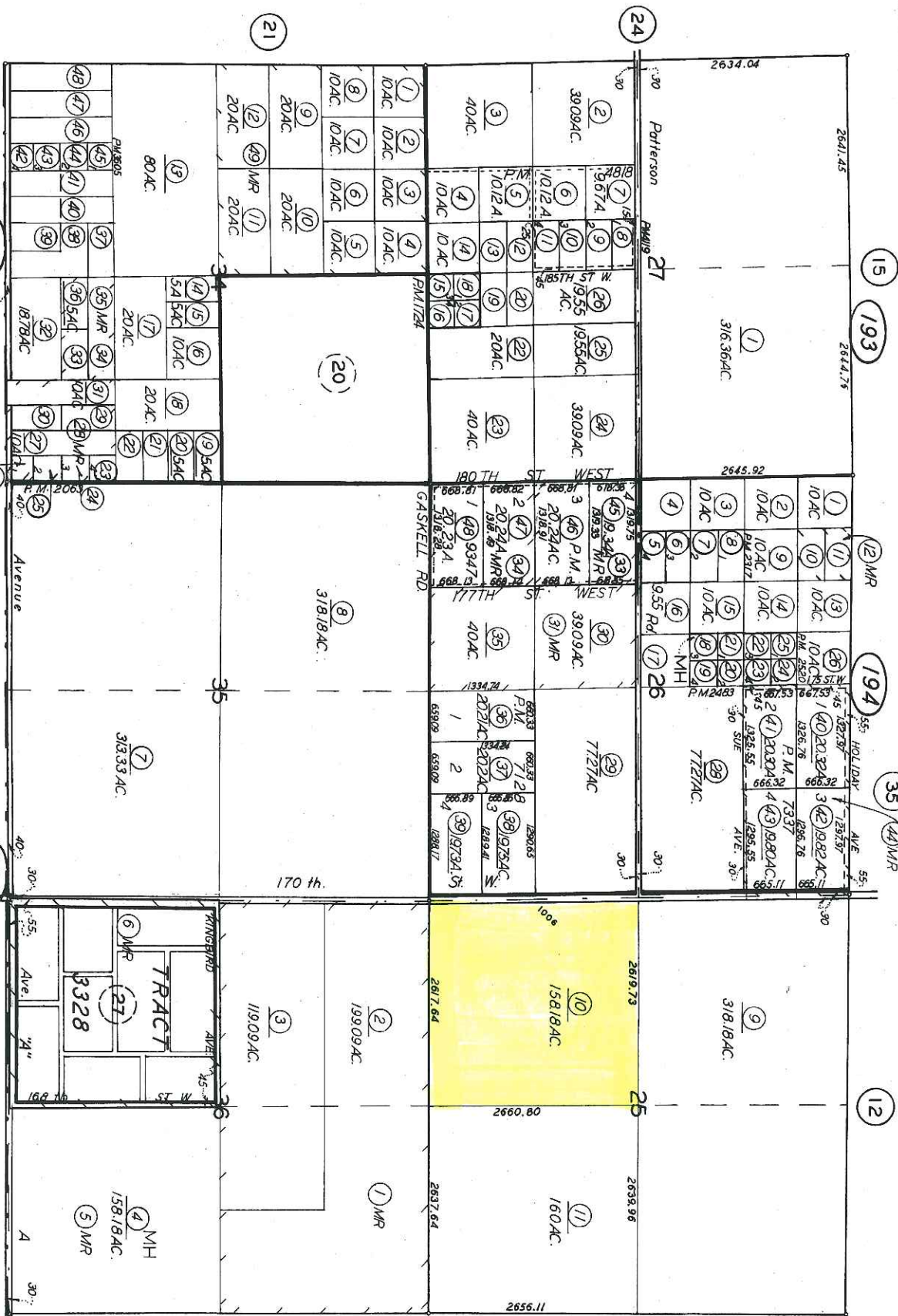


40

1" = 1200'



WDS000529



Revised: Mar. 17, 2003

LOS ANGELES COUNTY ASSESSORS MAP NO. 261-19 MH-For mobilehome A.P.N. see pg. 44 COUNTY OF KERN

Note: This map is for assessment purposes only. It is not to be construed as portraying legal ownership or divisions of land for purposes of zoning or subdivision law.



WDS000530

BK 359

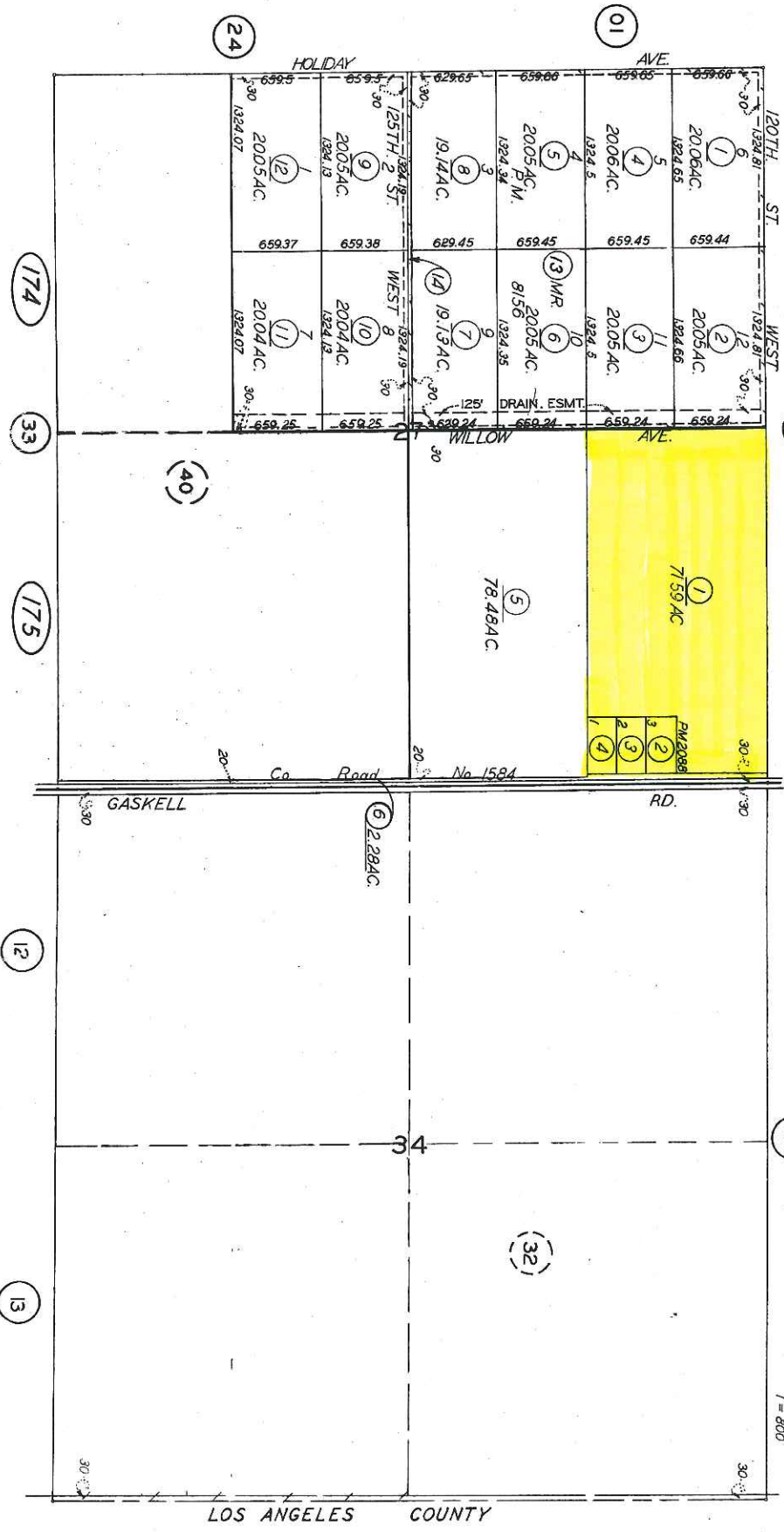
71-74

359-17

T.9N.R.14W.

SCHOOL DIST. 119-4

359-17

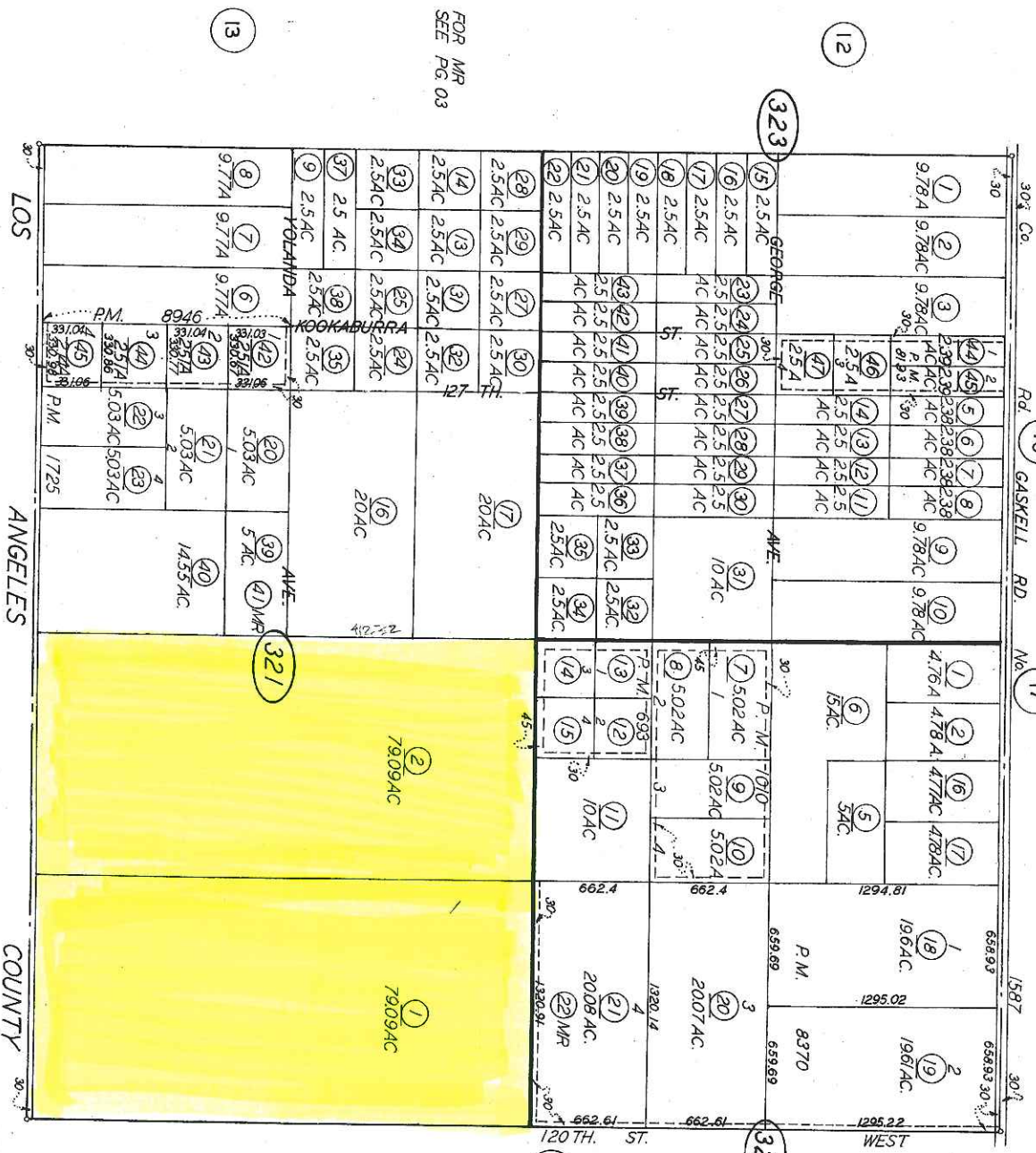


Note: This map is for assessment purposes only. It is not to be construed as portaying legal ownership or divisions of land for purposes of zoning or subdivision law.

ASSESSORS MAP NO 359-17
COUNTY OF KERN

WDS000531

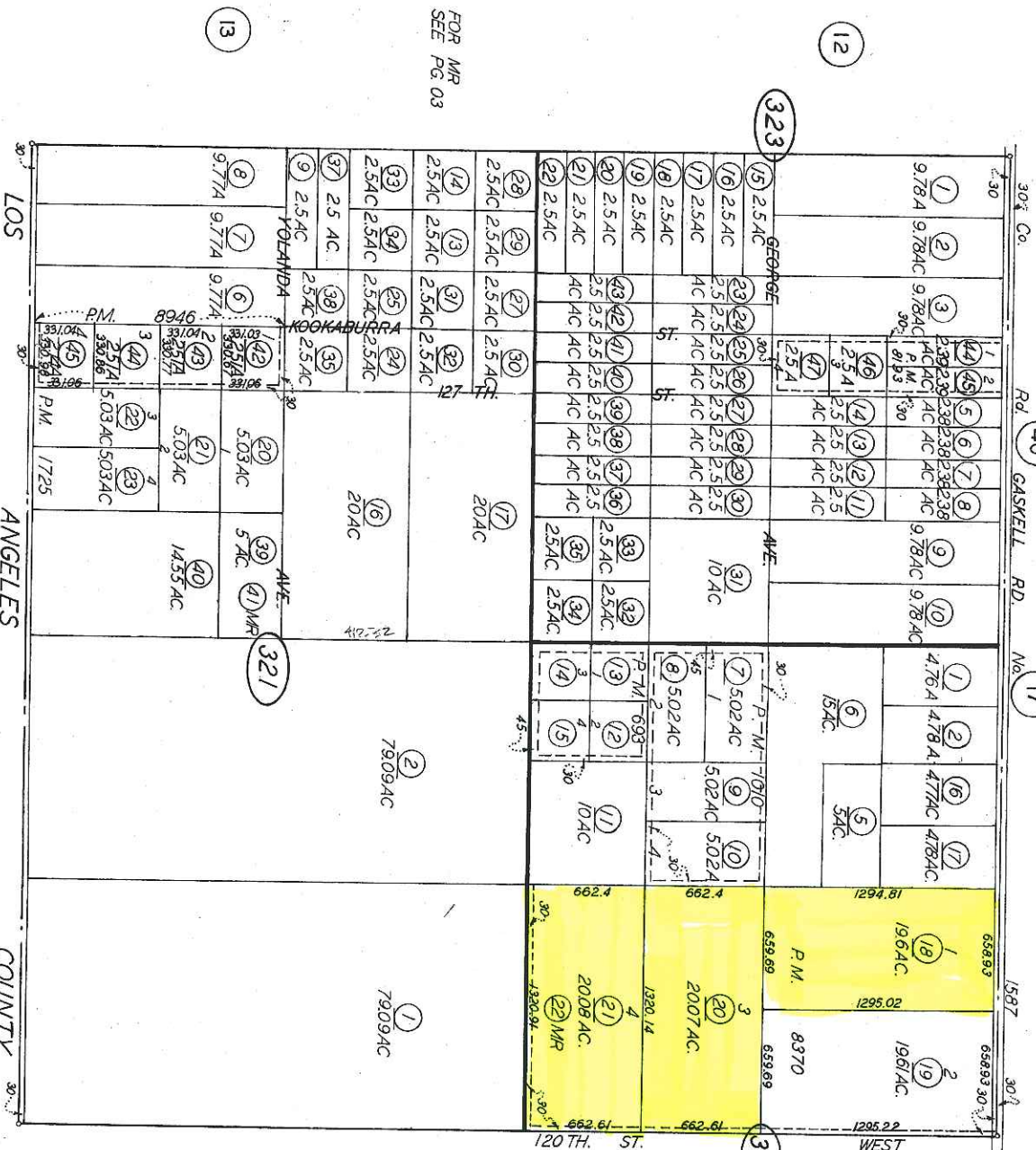
15-76



ASSESSORS MAP NO. 359-32
COUNTY OF KERN

Note: This map is for assessment purposes only. It is not to be construed as portraying legal ownership or divisions of land for purposes of zoning or subdivision law.

17-19



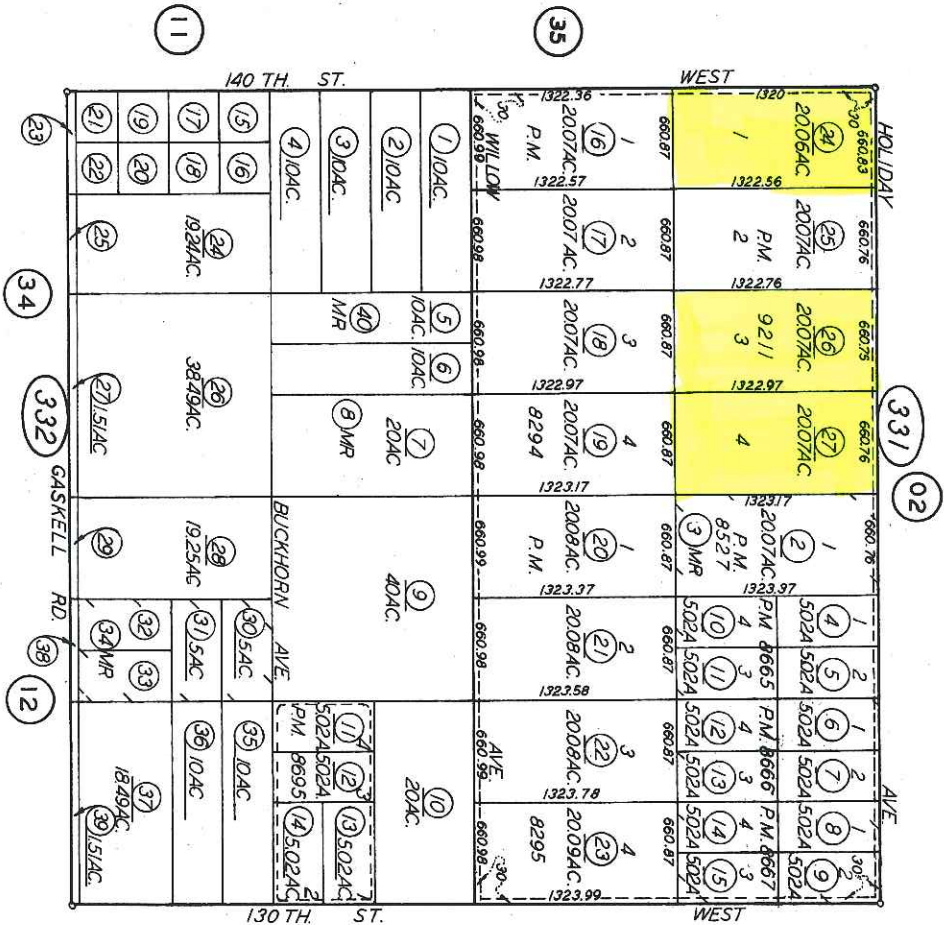
FOR MR SEE PG. 03

Note: This map is for assessment purposes only. It is not to be construed as portraying legal ownership or divisions of land for purposes of zoning or subdivision law.



WDS000533

ASSESSORS MAP NO. 359-32
 COUNTY OF KERN



Note: This map is for assessment purposes only. It is not to be construed as portraying legal ownership or land for purposes of zoning or subdivision law.

Revised: 2/15/12

ASSESSORS MAP NO. 359-33
COUNTY OF KERN

99-82

83-87

Note: This map is for assessment purposes only. It is not to be construed as portraying legal ownership or divisions of land for purposes of zoning or subdivision law.

BK 261

359-04

T. 9 N. R. 14 W.

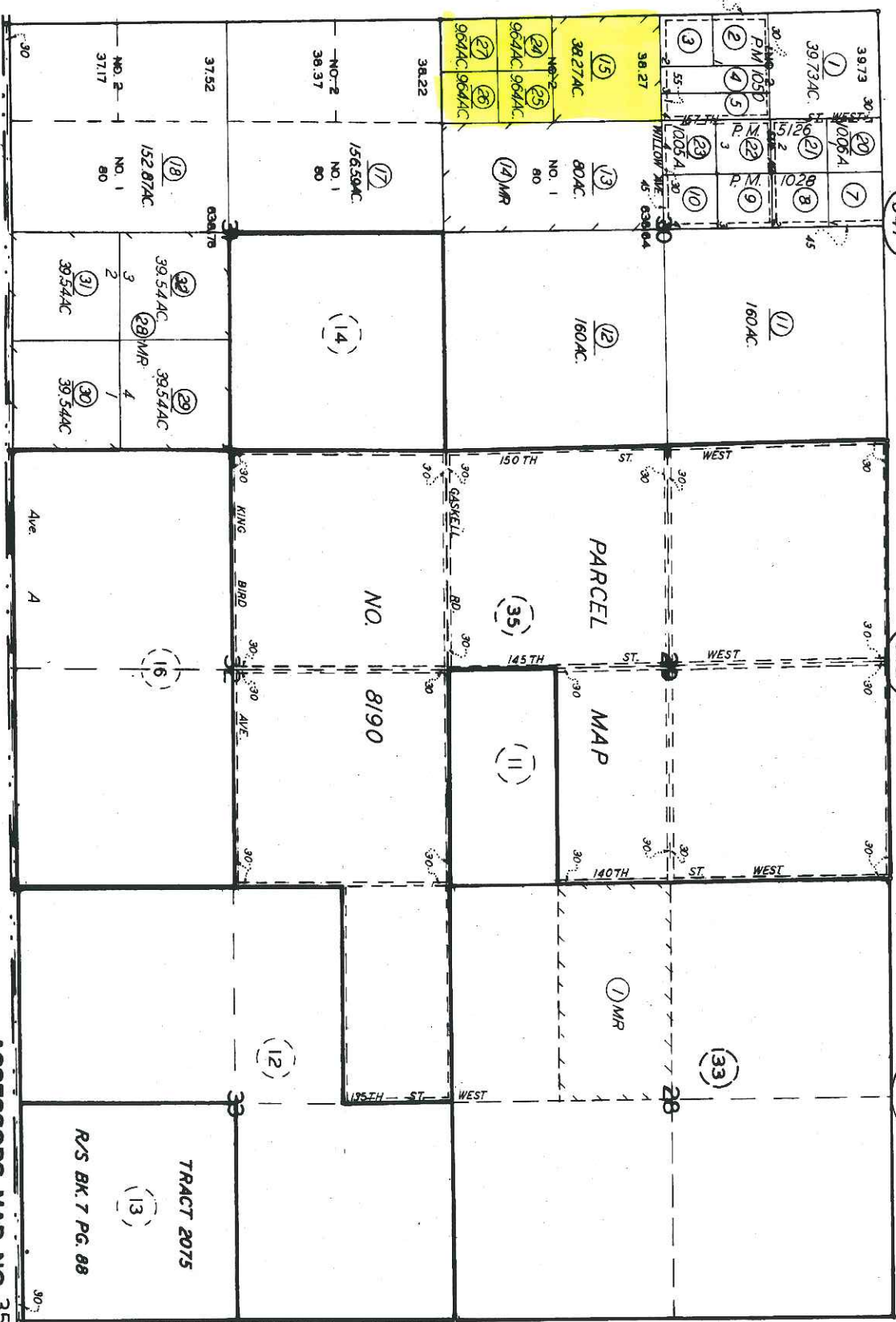
SCHOOL DIST. 119-4

359-04

Revised: Nov. 10, 2011

LOS ANGELES COUNTY

ASSESSORS MAP NO 359-04
COUNTY OF KERN



1"=1200'

WDS000535

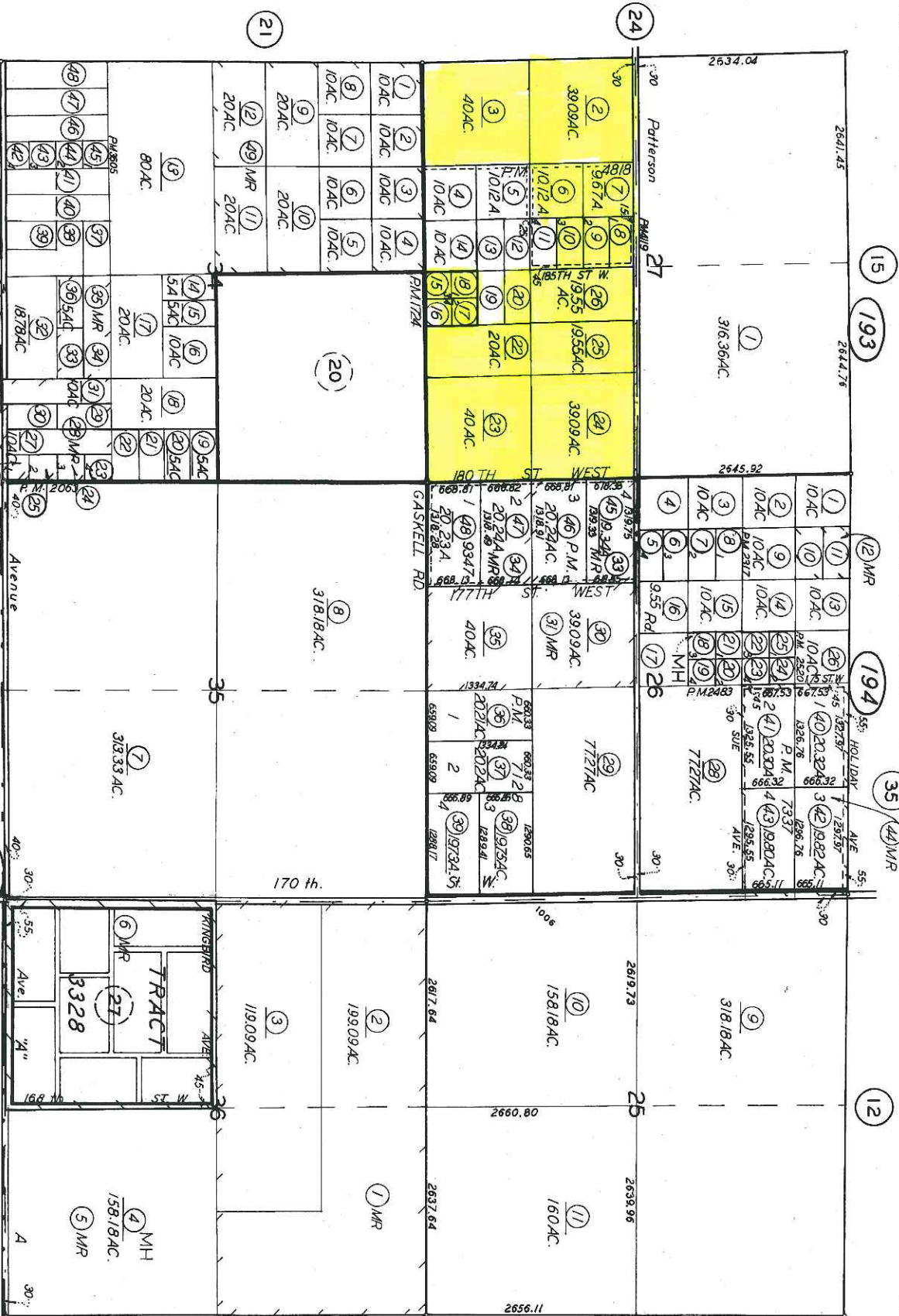
88-103

261-19

T. 9 N. R. 15 W.

SCHOOL DIST. 119-4

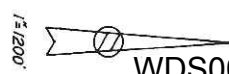
261-19



LOS ANGELES COUNTY
 Revised: Mar. 17, 2003
 MH=For mobilehome A.P.N see pg 44
 ASSESSORS MAP NO 261-19
 COUNTY OF KERN

Note: This map is for assessment purposes only. It is not to be construed as portraying legal ownership or divisions of land for purposes of zoning or subdivision law.

BK 359



WDS000536

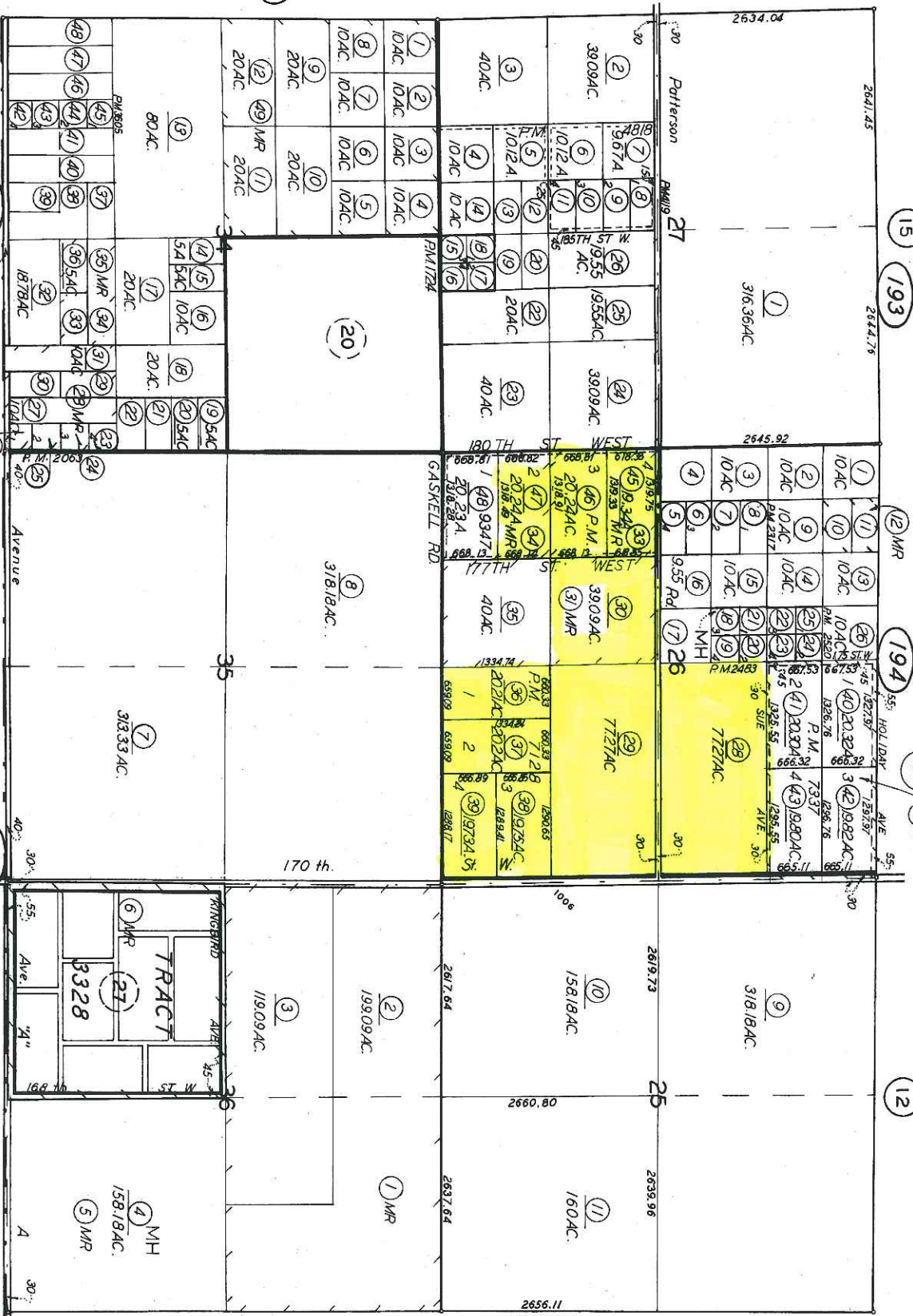
104-113

261-19

T. 9 N. R. 15 W.

SCHOOL DIST. 119-4

261-19



LOS ANGELES COUNTY
 ASSESSORS MAP NO 261-19
 COUNTY OF KERN

Revised: Mar. 17, 2003

MH=For mobilehome A.P.N see pg. 44

Note: This map is for assessment purposes only. It is not to be construed as portraying legal ownership or divisions of land for purposes of zoning or subdivision law.



WDS000537

BK 359

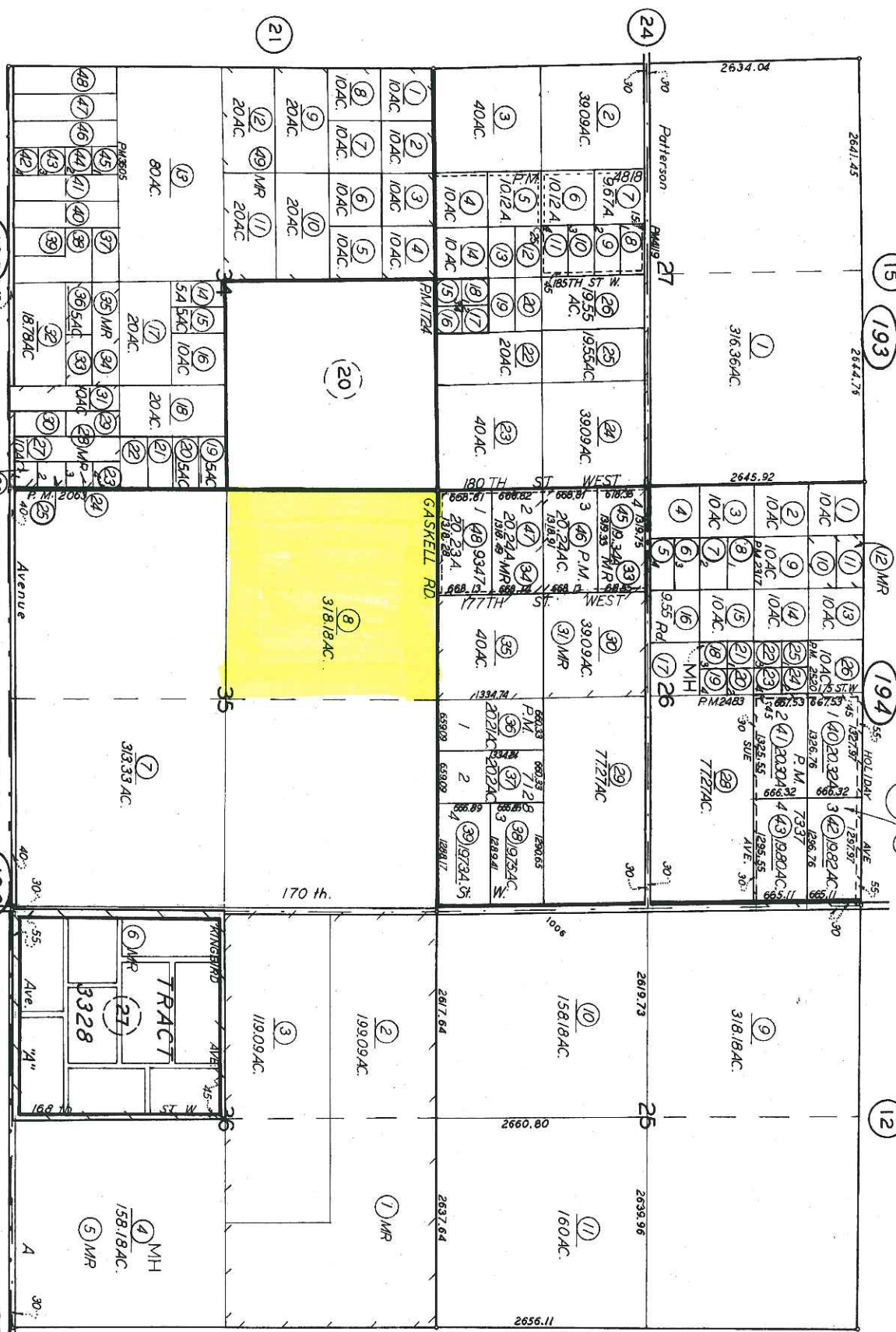
114

261-19

T. 9 N. R. 15 W.

SCHOOL DIST. 119-4

261-19



LOS ANGELES COUNTY
 ASSESSORS MAP NO. 261-19
 COUNTY OF KERN

Revised: Mar. 17, 2003

MH=For mobilehome A.P.N. see pg. 44

Note: This map is for assessment purposes only. It is not to be construed as portraying legal ownership or divisions of land for purposes of zoning or subdivision law.

BK 359



WDS000538

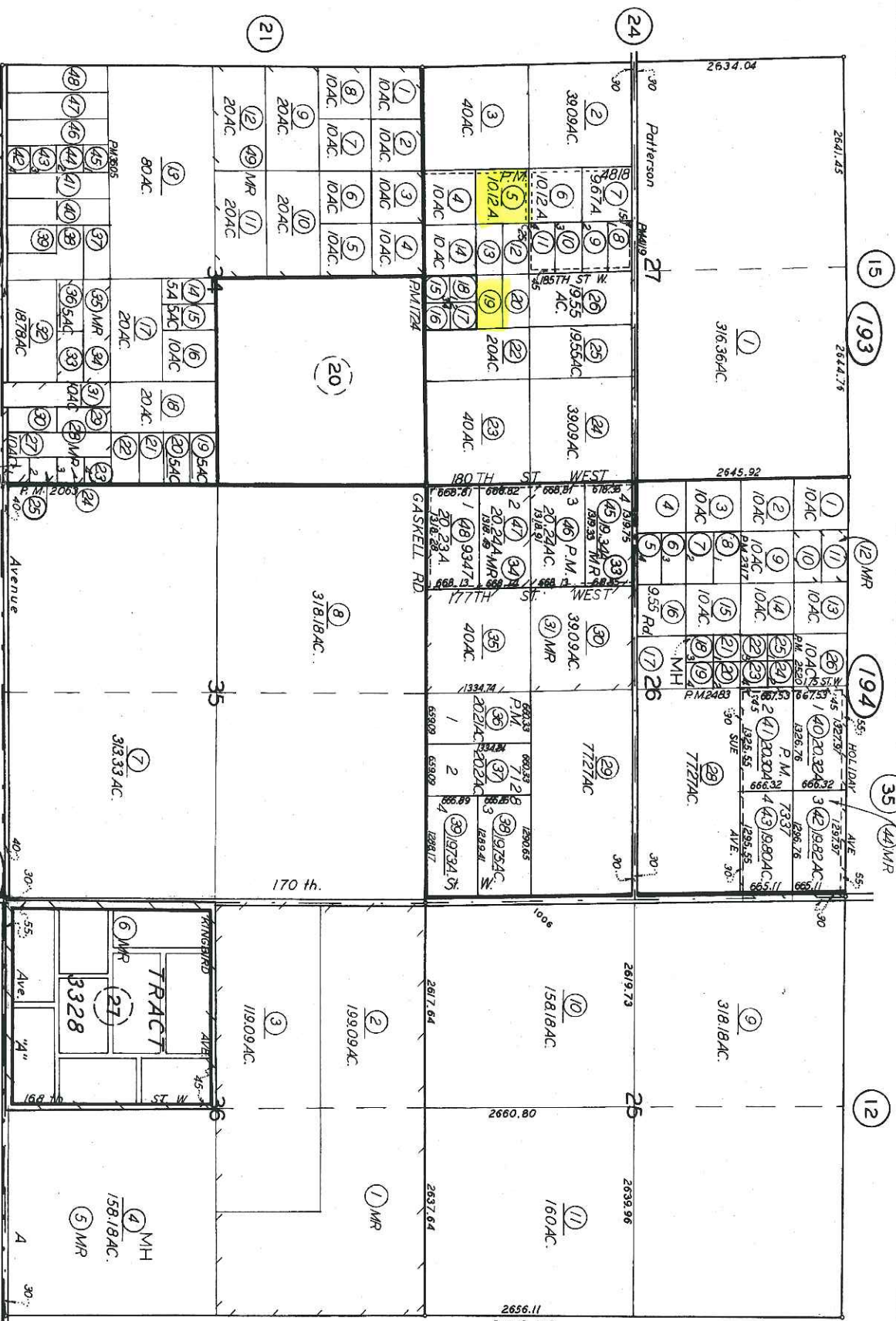
115-111P

261-19

T. 9 N. R. 15 W.

SCHOOL DIST. 119-4

261-19



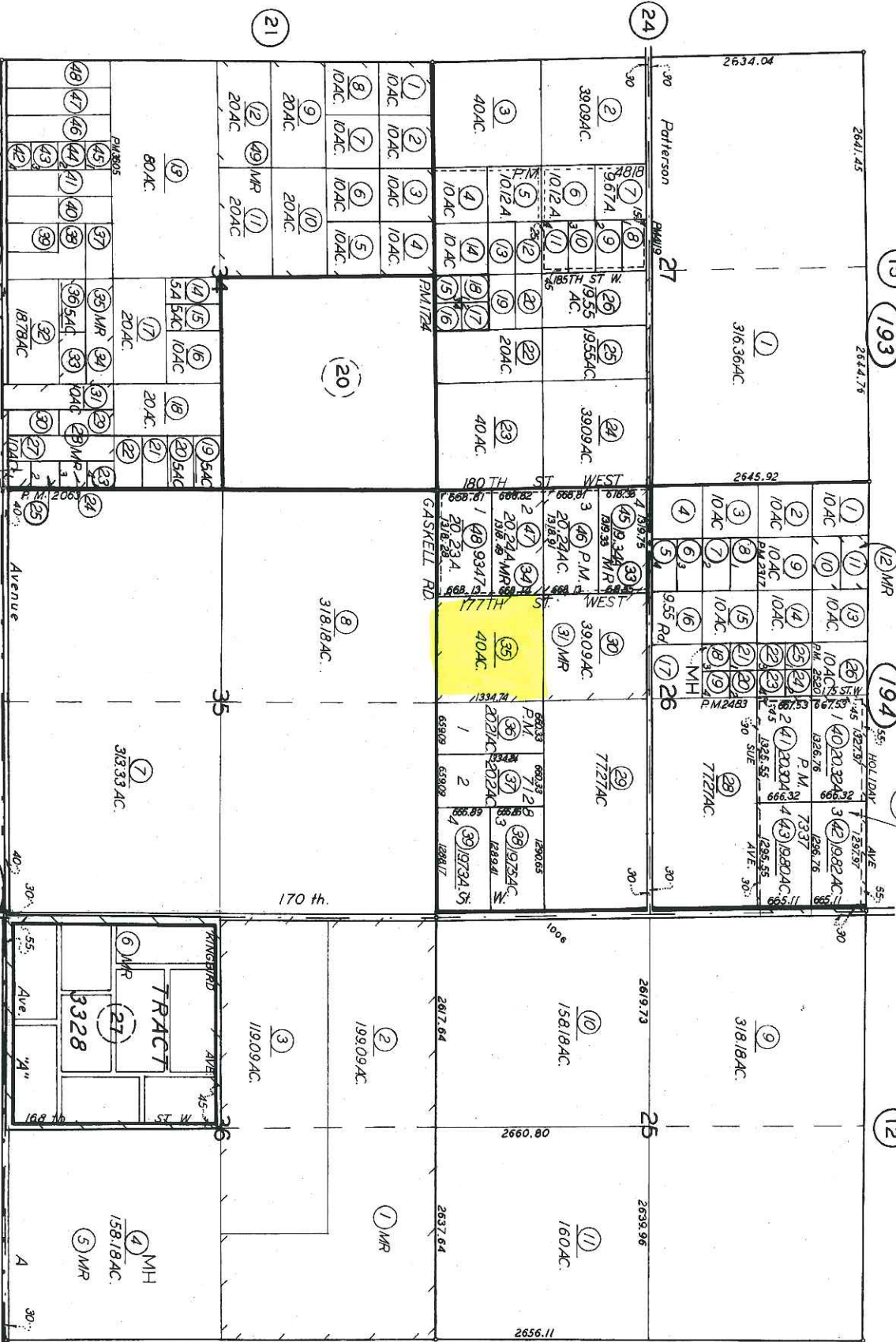
LOS ANGELES COUNTY ASSESSORS MAP NO 261-19
 Revised: Mar. 17, 2003
 MH=For mobilehome A.P.N. see pg. 44
 COUNTY OF KERN

Note: This map is for assessment purposes only. It is not to be construed as purporting legal ownership or divisions of land for purposes of zoning or subdivision law.

BK 359



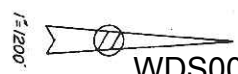
WDS000539



LOS ANGELES COUNTY ASSESSORS MAP NO 261-19
 Revised: Mar. 17, 2003
 MH=For mobilehome A.P.N. see pg. 44
 COUNTY OF KERN

Note: This map is for assessment purposes only. It is not to be construed as portraying legal ownership or divisions of land for purposes of zoning or subdivision law.

BK 359



WDS000540

3258

SHEET 1

P.A. 3237-1

TRA 9608
9563 9610
9607

REVISED
2008043004003001-A1
2008051502004001-A1

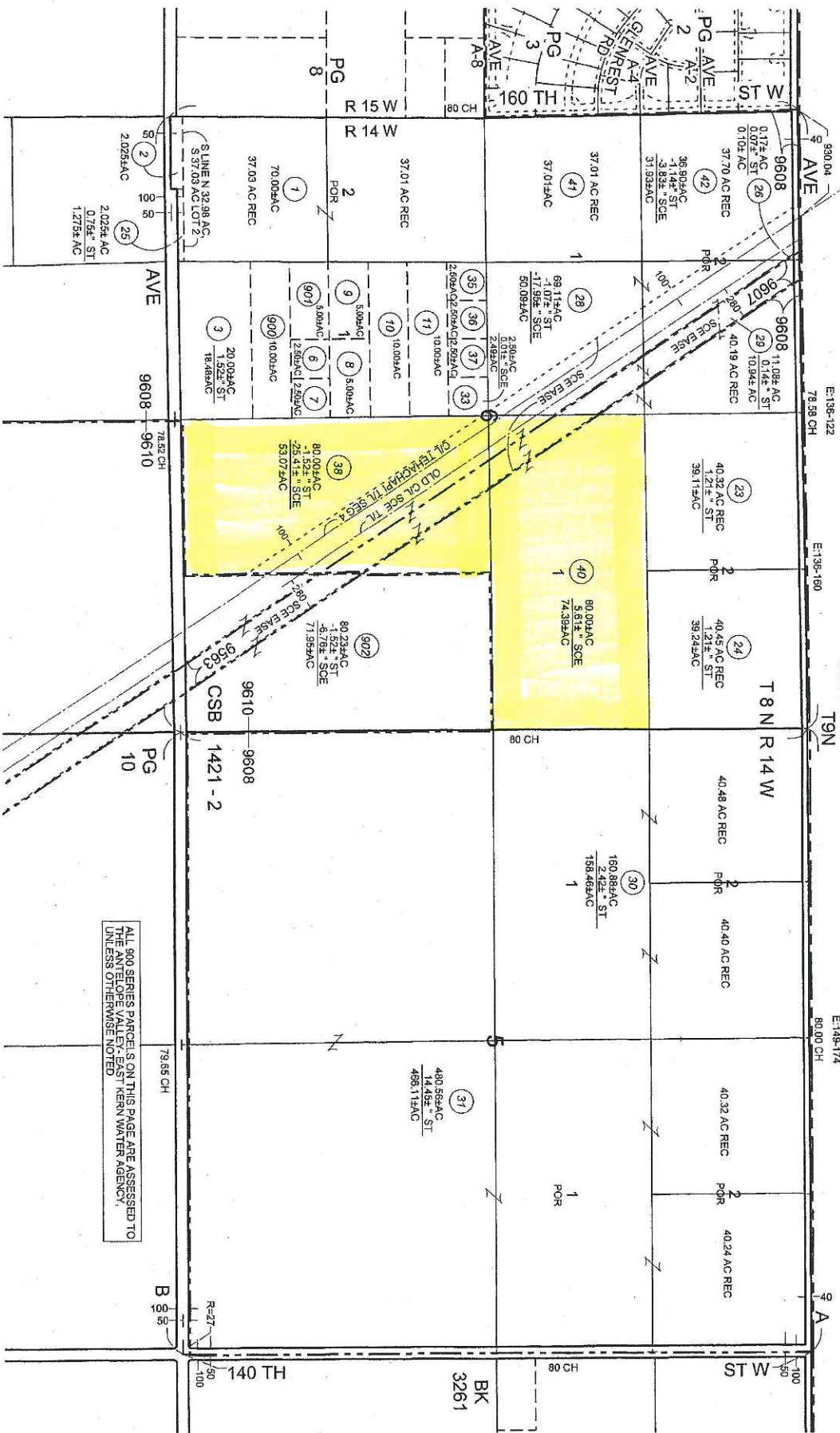
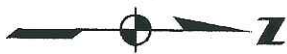
2011042004-A1

SEARCH NO
S

OFFICE OF THE ASSESSOR
COUNTY OF LOS ANGELES
COPYRIGHT © 2002

2012

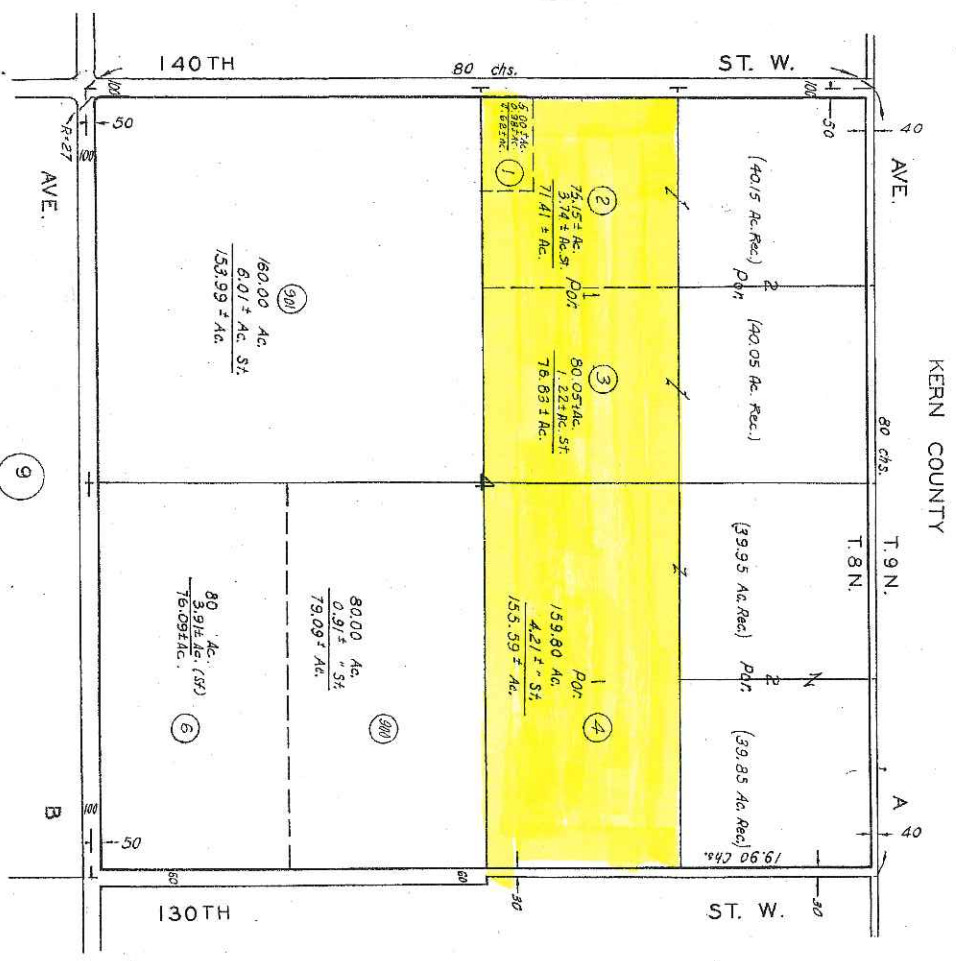
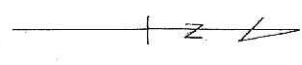
MAPPING AND GIS
SERVICES
SCALE 1" = 800'



118-119

ALL 900 SERIES PARCELS ON THIS PAGE ARE ASSESSED TO THE ANTELOPE VALLEY - EAST - KERN WATER AGENCY, UNLESS OTHERWISE NOTED

WDS00054



BK. 3258

CODE 9610

FOR PREV. ASSMNT SEE: 3221-3

T. 8 N., R. 14 W.

120-122

670621506
 681001501
 690418524
 710305608
 77014
 2008051502001001-1
 20080505000001-1

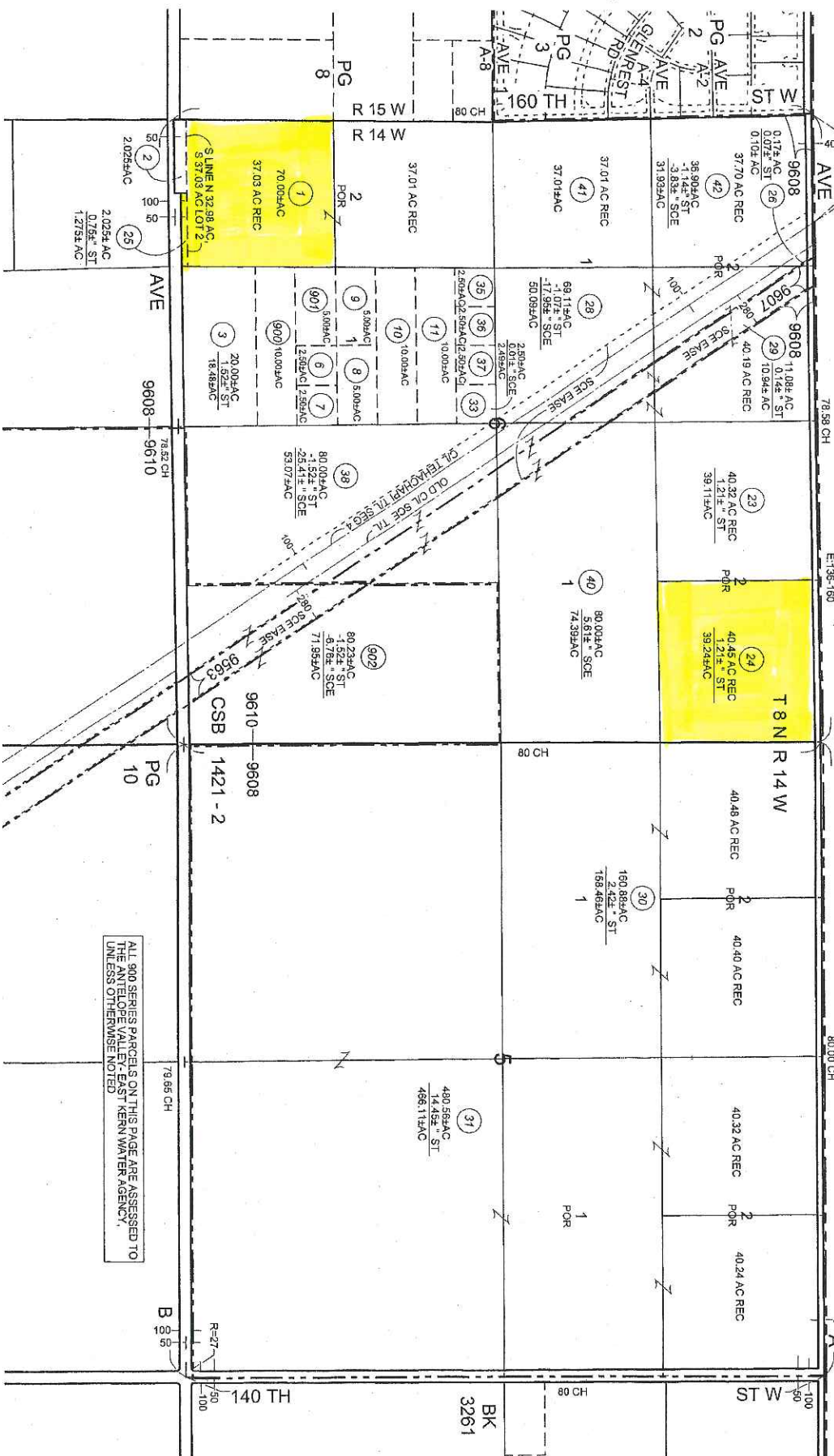
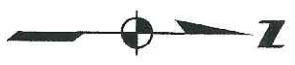
WDS000542

ALL 900 SERIES PARCELS ON THIS PAGE ARE ASSESSED TO THE ANTELOPE VALLEY - EAST KERN WATER AGENCY, UNLESS OTHERWISE NOTED

ASSESSOR'S MAP
 COUNTY OF LOS ANGELES, CALIF.

2012

MAPPING AND GIS SERVICES SCALE 1" = 800'



ALL 900 SERIES PARCELS ON THIS PAGE ARE ASSESSED TO THE ANTELOPE VALLEY-EAST KERN WATER AGENCY, UNLESS OTHERWISE NOTED

123, 124, 128

EXHIBIT "A"

- 359-011-02 – Kern County
- 359-011-03 – Kern County
- 359-011-04 – Kern County
- 359-011-05 – Kern County
- 359-011-06 – Kern County
- 359-011-07 – Kern County
- 359-011-08 – Kern County
- 359-011-09 – Kern County
- 359-011-10 – Kern County
- 359-011-11 – Kern County
- 359-011-12 – Kern County
- 359-011-13 – Kern County
- 359-011-14 – Kern County
- 359-011-15 – Kern County
- 359-011-16 – Kern County
- 359-011-17 – Kern County
- 359-011-18 – Kern County
- 359-011-19 – Kern County
- 359-011-20 – Kern County
- 359-011-21 – Kern County
- 359-011-22 – Kern County
- 359-011-23 – Kern County
- 359-011-24 – Kern County
- 359-020-50 – Kern County
- 359-041-05 – Kern County
- 359-041-07 – Kern County

359-041-08 – Kern County
359-174-01 – Kern County
359-174-02 – Kern County
359-174-03 – Kern County
359-174-04 – Kern County
359-174-05 – Kern County
359-174-06 – Kern County
359-174-07 – Kern County
359-174-08 – Kern County
359-174-09 – Kern County
359-174-10 – Kern County
359-174-11 – Kern County
359-174-12 – Kern County
359-240-04 – Kern County
359-331-17 – Kern County
359-331-19 – Kern County
359-331-25 – Kern County
359-011-01 – Kern County
359-041-30 – Kern County
261-196-10 – Kern County
359-175-01 – Kern County
359-175-02 – Kern County
359-175-03 – Kern County
359-175-04 – Kern County
359-321-01 – Kern County
359-321-02 – Kern County
359-324-18 – Kern County
359-324-20 – Kern County

359-324-21 – Kern County
359-331-24 – Kern County
359-331-26 – Kern County
359-331-27 – Kern County
359-041-15 – Kern County
359-041-24 – Kern County
359-041-25 – Kern County
359-041-26 – Kern County
359-041-27 – Kern County
261-193-02 – Kern County
261-193-03 – Kern County
261-193-06 – Kern County
261-193-07 – Kern County
261-193-08 – Kern County
261-193-09 – Kern County
261-193-10 – Kern County
261-193-15 – Kern County
261-193-17 – Kern County
261-193-18 – Kern County
261-193-20 – Kern County
261-193-22 – Kern County
261-193-23 – Kern County
261-193-24 – Kern County
261-193-25 – Kern County
261-193-26 – Kern County
261-194-28 – Kern County
261-194-29 – Kern County
261-194-30 – Kern County

261-194-36 – Kern County
261-194-37 – Kern County
261-194-38 – Kern County
261-194-39 – Kern County
261-194-45 – Kern County
261-194-46 – Kern County
261-194-47 – Kern County
261-196-08 – Kern County
261-193-05 – Kern County
261-193-19 – Kern County
261-194-35 – Kern County
3258-001-038 – Los Angeles County
3258-001-040 – Los Angeles County
3261-001-004 – Los Angeles County
3261-001-002 – Los Angeles County
3261-001-003 – Los Angeles County
3258-001-001 – Los Angeles County
3258-001-024 – Los Angeles County
3258-001-025 – Los Angeles County