

# EXHIBIT "F"

**APN's 359-011-05;**

**359-011-01**

eSolar	2000	2001	2002	2003	2004	2005	2006	2007	2008	2009	2010	2011	2012
AF/Year	2000	2001	2002	2003	2004	2005	2006	2007	2008	2009	2010	2011	2012
Estimated from SCE Meter 13882381 (Alesso East)	244	151	378	132	425	428	319	5	399	407			
Estimated from SCE Meter 13882382 (Alesso West)	169	248	472	186	524	457	572	389	623	612			
Other meters	?	?	?	?	?	?	?	?	?	?			
Total estimated from SCE meters	413	399	850	318	949	885	891	393	1,022	1,019			
Grimmway Reported from well flow meters (includes Martin, Swisher and Vodermark)	685				1,223	1,228	1,755	1,338	2,512	2,752			

TOTAL REPORTED GROUNDWATER USAGE	?	?	?	?	?	?	?	?	?	?	?	?	?
----------------------------------	---	---	---	---	---	---	---	---	---	---	---	---	---

Notes:  
 Pumpage estimated from power usage using the AZDWR method defined at: <http://www.azwater.gov/dwr/drought/ffiles/estimating%20water%20use%20final.pdf>  
 The meter readings are lower than Grimmway because a 3rd meter is missing and not available  
 When the reported groundwater pumpage was greater than the estimated AW requirement, it was because Grimmway was conveying the water to adjacent parcels not included in this AW analysis.  
 No AVEK turnouts

Consolidated Pumpage Data and Estimates	0.83	0.83	0.83	0.83	0.83	0.83	0.83	0.83	0.83	0.83	0.83	0.83	0.83
Domestic	0.83	0.83	0.83	0.83	0.83	0.83	0.83	0.83	0.83	0.83	0.83	0.83	0.83
Alesso East	342	151	378	432	425	428	319	0	508	544	313	0	0
Alesso West	342	248	472	533	524	488	588	472	744	946	544	0	0
Martin	326	297	183	509	501			154	391	454	261	0	0
Swisher	326	297	183	509	501		425	284	264	346	200	0	0
Vodermark	326	297	183	509	501	311	425	428	605	460	265	0	0
Total	1,664	1,290	1,401	2,494	2,453	1,229	1,756	1,338	2,512	2,752	1,585	1	1
AW requirement	1,664	1,290	1,401	2,494	2,453	1,229	1,756	1,338	2,512	2,752	1,584	1	1



Land Use Data

Map ID	Parcel Group	County	Parcel #	Acreage	Percent Met Farmable	Net Farmable	Parcels GW Imported From	Well Type	Well Production (AF)													
									2000	2001	2002	2003	2004	2005	2006	2007	2008	2009	2010	2011	2012	
0	4	Kern	359-011-02	20	90%	18	359-011-01, 359-011-005	Irrigation	526	0	268	345	344	151	422	122	235	159	259	236	181	
1	4	Kern	359-011-03	20	90%	18	359-011-01, 359-011-005															
2	4	Kern	359-011-04	20	90%	18	359-011-01, 359-011-005															
3	4	Kern	359-011-05	20	90%	18	None															
4	4	Kern	359-011-06	20	90%	18	359-011-01, 359-011-005															
5	4	Kern	359-011-07	20	90%	18	359-011-01, 359-011-005															
6	4	Kern	359-011-08	19	90%	17	359-011-01, 359-011-005															
7	4	Kern	359-011-09	19	90%	17	359-011-01, 359-011-005															
8	4	Kern	359-011-10	20	90%	18	359-011-01, 359-011-005															
9	4	Kern	359-011-11	20	90%	18	359-011-01, 359-011-005															
10	4	Kern	359-011-12	20	90%	18	359-011-01, 359-011-005															
11	4	Kern	359-011-13	20	90%	18	359-011-01, 359-011-005															
12	4	Kern	359-011-14	20	90%	18	359-011-01, 359-011-005															
13	4	Kern	359-011-15	20	90%	18	359-011-01, 359-011-005															
14	4	Kern	359-011-16	19	90%	17	359-011-01, 359-011-005															
15	4	Kern	359-011-17	19	90%	17	359-011-01, 359-011-005															
16	4	Kern	359-011-18	20	90%	18	359-011-01, 359-011-005															
17	4	Kern	359-011-19	20	90%	18	359-011-01, 359-011-005															
18	4	Kern	359-011-20	20	90%	18	359-011-01, 359-011-005															
19	4	Kern	359-011-21	19	90%	17	359-011-01, 359-011-005															
20	4	Kern	359-011-22	20	90%	18	359-011-01, 359-011-005															
21	4	Kern	359-011-23	20	90%	18	359-011-01, 359-011-005															
22	4	Kern	359-011-24	20	90%	18	359-011-01, 359-011-005															
23	4	Kern	359-011-27	3	90%	3	359-011-01, 359-011-005															
24	4	Kern	359-020-50	161	90%	145	359-011-01, 359-011-005															
25	6	Kern	359-041-05	10	90%	9	None															
26	6	Kern	359-041-07	10	90%	9	None															
27	6	Kern	359-041-08	10	90%	9	None															
28	4	Kern	359-174-01	20	90%	18	359-011-01, 359-011-005															
29	4	Kern	359-174-02	20	90%	18	359-011-01, 359-011-005															
30	4	Kern	359-174-03	20	90%	18	359-011-01, 359-011-005															
31	4	Kern	359-174-04	20	90%	18	359-011-01, 359-011-005															
32	4	Kern	359-174-05	20	90%	18	359-011-01, 359-011-005	Irrigation	0	0	0	0	0	0	0	0	0	0	0	0	0	0

Land Use Data

Map ID	Parcel Group	County	Parcel #	Acreage	Percent Net Farmable	Net Farmable	Parcels GW Imported From	Well Type	Well Production (AF)															
									2000	2001	2002	2003	2004	2005	2006	2007	2008	2009	2010	2011	2012			
33	4	Kern	359-174-06	20	90%	18	359-011-01, 359-011-005																	
34	4	Kern	359-174-07	19	90%	17	359-011-01, 359-011-005																	
35	4	Kern	359-174-08	19	90%	17	359-011-01, 359-011-005																	
36	4	Kern	359-174-09	20	90%	18	359-011-01, 359-011-005																	
37	4	Kern	359-174-10	20	90%	18	359-011-01, 359-011-005																	
38	4	Kern	359-174-11	20	90%	18	359-011-01, 359-011-005	Irrigation	0	0	0	0	0	0	0	0	0	0	0	0	0	0	0	
39	4	Kern	359-174-12	20	90%	18	359-011-01, 359-011-005	Domestic	0.83	0.83	0.83	0.83	0.83	0.83	0.83	0.83	0.83	0.83	0.83	0.83	0.83	0.83	0.83	
40	4	Kern	359-174-14	2	90%	2	359-011-01, 359-011-005																	
41	4	Kern	359-240-04	164	90%	147	359-011-01, 359-011-005																	
42	8	Kern	359-331-17	20	90%	18	None																	
43	8	Kern	359-331-19	20	90%	18	None																	
44	8	Kern	359-331-25	20	90%	18	None																	
45	4	Kern	359-011-01	19	90%	18	None	Irrigation	1,174	719	381	110	680	769	367	258	351	586	726	472	315			
56	7	Kern	359-041-30	40	90%	36	None	Irrigation	272	272	272	272	272	272	272	272	272	164	272	272	272	272		
67	2	Kern	261-196-10	158	90%	142	None	Irrigation	681	681	571	571	571	571	571	571	571	571	571	0	0	0		
68	15	Kern	359-041-29	40	90%	36																		
69	15	Kern	359-041-31	40	90%	36																		
70	15	Kern	359-041-32	40	90%	36																		
71	5	Kern	359-175-01	72	96%	70	None	Irrigation	20	446	921	274	298	404	365	242	424	993	727	625	883			
72	5	Kern	359-175-02	2	98%	2	359-175-01, 359-321-01																	
73	5	Kern	359-175-03	2	98%	2	359-175-01, 359-321-01																	
74	5	Kern	359-175-04	2	98%	2	359-175-01, 359-321-01																	
75	5	Kern	359-321-01	79	98%	78	None	Irrigation	0	0	77	843	930	641	660	762	709	575	573	635	896			
76	5	Kern	359-321-02	79	98%	78	359-175-01, 359-321-01																	
77	5	Kern	359-324-18	20	98%	19	359-175-01, 359-321-01																	
78	5	Kern	359-324-20	20	98%	20	359-175-01, 359-321-01																	
79	5	Kern	359-324-21	20	98%	20	359-175-01, 359-321-01																	
80	9	Kern	359-331-24	20	90%	18	None	Domestic	0.83	0.83	0.83	0.83	0.83	0.83	0.83	0.83	0.83	0.83	0.83	0.83	0.83	0.83	0.83	
81	9	Kern	359-331-26	20	90%	18	None																	
82	9	Kern	359-331-27	20	90%	18	None																	
83	1	Kern	359-041-15	38	90%	34	359-041-27																	
84	1	Kern	359-041-24	10	90%	9	359-041-27																	
85	1	Kern	359-041-25	10	90%	9	359-041-27																	
86	1	Kern	359-041-26	10	90%	9	359-041-27																	

Land Use Data

Map ID	Parcel Group	County	Parcel #	Acreage	Percent Net Farmable	Parcels GW Imported From	Well Type	Well Production (AF)														
								2000	2001	2002	2003	2004	2005	2006	2007	2008	2009	2010	2011	2012		
87	1	Kern	359-001-27	10	90%	9	None	Irrigation	309	309	309	309	309	1	1	1	1	1	1	1	1	
88	3	Kern	261-193-02	39	90%	35	None															
89	3	Kern	261-193-03	40	90%	36	None															
90	3	Kern	261-193-06	40	90%	9	None															
91	3	Kern	261-193-07	10	90%	9	None															
92	3	Kern	261-193-08	5	90%	4	None															
93	3	Kern	261-193-09	5	90%	5	None															
94	3	Kern	261-193-10	5	90%	5	None															
95	3	Kern	261-193-15	3	90%	2	261-193-22, 261-193-23, 261-194-28, 261-194-29, 261-194-36															
96	3	Kern	261-193-17	3	90%	2	261-193-22, 261-193-23, 261-194-28, 261-194-29, 261-194-36															
97	3	Kern	261-193-18	3	90%	2	261-193-22, 261-193-23, 261-194-28, 261-194-29, 261-194-36															
98	3	Kern	261-193-20	5	90%	5	261-193-22, 261-193-23, 261-194-28, 261-194-29, 261-194-36															
99	3	Kern	261-193-22	20	90%	18	None	Irrigation	342	248	472	533	524	488	586	472	744	946	544	0	0	
100	3	Kern	261-193-23	40	90%	36	None	Irrigation	342	151	378	432	425	428	319	0	508	544	513	0	0	
101	3	Kern	261-193-24	39	90%	35	261-193-22, 261-193-23, 261-194-28, 261-194-29, 261-194-36															
102	3	Kern	261-193-25	20	90%	18	261-193-22, 261-193-23, 261-194-28, 261-194-29, 261-194-36															
103	3	Kern	261-193-26	20	90%	18	261-193-22, 261-193-23, 261-194-28, 261-194-29, 261-194-36															
104	3	Kern	261-194-28	77	90%	70	None	Irrigation	326	297	183	509	501	0	0	154	391	454	261	0	0	
105	3	Kern	261-194-29	77	90%	70	None	Irrigation	326	297	183	509	501	0	425	284	264	348	200	0	0	
106	3	Kern	261-194-30	39	90%	35	261-193-22, 261-193-23, 261-194-28, 261-194-29, 261-194-36															
107	3	Kern	261-194-36	20	90%	18	None	Irrigation	326	297	183	509	501	311	425	428	605	460	265	0	0	
108	3	Kern	261-194-37	20	90%	18	261-193-22, 261-193-23, 261-194-28, 261-194-29, 261-194-36															
109	3	Kern	261-194-38	20	90%	18	None															
110	3	Kern	261-194-39	20	90%	18	None	Domestic	0.83	0.83	0.83	0.83	0.83	0.83	0.83	0.83	0.83	0.83	0.83	0.83	0.83	
111	3	Kern	261-194-45	19	90%	17	None															
112	3	Kern	261-194-46	20	90%	18	None															
113	3	Kern	261-194-47	20	90%	18	None															
114	3	Kern	261-196-08	318	90%	286	261-193-22, 261-193-23, 261-194-28, 261-194-29, 261-194-36															
115	3	Kern	261-193-05	10	90%	9	None															
116	3	Kern	261-193-19	5	90%	5	261-193-22, 261-193-23, 261-194-28, 261-194-29, 261-194-36															
117	3	Kern	261-194-35	40	90%	36	261-193-22, 261-193-23, 261-194-28, 261-194-29, 261-194-36															
118	11	LA	3258-001-038	79	90%	71	None	Irrigation	396	519	125	123	0	0	0	271	271	271	271	271	0	0

Land Use Data

Map ID	Parcel Group	County	Parcel #	Acreage	Percent Net Farmable	Net Farmable	Parcels GW Imported From	Well Type	Well Production (AF)															
									2000	2001	2002	2003	2004	2005	2006	2007	2008	2009	2010	2011	2012			
119	13	LA	3258-001-040	81	90%	73	3258-001-030																	
120	14	LA	3261-001-004	157	90%	141	3258-001-031																	
121	10	LA	3261-001-002	72	90%	65	3258-001-031																	
122	11	LA	3261-001-003	79	90%	71	3258-001-031																	
123	11	LA	3258-001-001	71	90%	64	None	Irrigation	396	519	125	123	0	0	0	271	271	271	271	271	271	0	0	
124	12	LA	3258-001-024	40	90%	36	3258-001-030																	
126	15	LA	3258-001-031	466	90%	420																		
127	15	LA	3258-001-030	157	90%	142																		
128	11	LA	3258-001-025	1	90%	1	None																	



Parcel Group	Former Owner	Parcels	Average (AF) 2000-2004
1	Arcuri	83-87	309
2	Bejulan	67	615
3	eSolar	88-117	1,860
4	Grimmway	0-24, 28-41, 45	910
5	Harter	71-79	762
6	Robertson & Nikkel	25-27	0
7	Sandhu	56	272
8	Collins, Doyle, Wong	42-44	0
9	Bagnell, Faber	80-82	0.8
10	Dennis	121	247
11	Hemmerling	118, 122, 123, 123A	902
12	O'Neil	124	220
13	Reca	119	448
14	Wilson	120	0
	<b>Total</b>		<b>6,547</b>

here

here

here

here

here

here

here

here

Came from Maritorena to west

122 came from Maritorena to west

Came from Maritorena to east

Came from Maritorena to east

Came from Maritorena to west

Parcel Group	Former Owner	Parcels	Reported Groundwater Pumpage (AF)										Assumed Groundwater Pumpage (AF)															
			2000	2001	2002	2003	2004	2005	2006	2007	2008	2009	2010	2011	2012	2000	2001	2002	2003	2004	2005	2006	2007	2008	2009	2010	2011	2012
1	Arcuri	83-87	?	?	?	?	?	?	?	?	?	?	?	?	?	?	?	?	?	?	?	?	?	?	?	?	?	
2	Bejulan	67	?	?	?	?	?	?	?	?	?	?	?	?	?	?	?	?	?	?	?	?	?	?	?	?	?	
3	eSolar	88-117	?	?	?	?	?	?	?	?	?	?	?	?	?	?	?	?	?	?	?	?	?	?	?	?	?	
4	Grimmway	0-24, 28-41, 45	?	?	649	456	1,024	920	789	380	585	744	985	708	496	1,700	720	650	998	1,117	1,025	921	790	381	586	745	986	
5	Harter	71-79	20	446	998	1,117	1,228	1,045	1,045	1,004	1,133	1,568	1,300	1,260	?	20	446	998	1,117	1,228	1,045	1,045	1,004	1,133	1,568	1,300	1,260	
6	Robertson & Nikkel	25-27	?	?	?	?	?	?	?	?	?	?	?	?	?	?	?	?	?	?	?	?	?	?	?	?	?	
7	Sandhu	56	?	?	?	?	?	?	?	?	?	?	?	?	?	?	?	?	?	?	?	?	?	?	?	?	?	
8	Collins, Doyle, Wong	42-44	?	?	?	?	?	?	?	?	?	?	?	?	?	?	?	?	?	?	?	?	?	?	?	?	?	
9	Bagnell, Faber	80-82	?	?	?	?	?	?	?	?	?	?	?	?	?	?	?	?	?	?	?	?	?	?	?	?	?	
10	Dennis	121	?	?	?	?	?	?	?	?	?	?	?	?	?	?	?	?	?	?	?	?	?	?	?	?	?	
11	Hemmerling	118, 122, 123, 123A	?	?	?	?	?	?	?	?	?	?	?	?	?	?	?	?	?	?	?	?	?	?	?	?	?	
12	O'Neil	124	?	?	?	?	?	?	?	?	?	?	?	?	?	?	?	?	?	?	?	?	?	?	?	?	?	
13	Reca	119	?	?	?	?	?	?	?	?	?	?	?	?	?	?	?	?	?	?	?	?	?	?	?	?	?	
14	Wilson	120	?	?	?	?	?	?	?	?	?	?	?	?	?	?	?	?	?	?	?	?	?	?	?	?	?	
		Total	20	446	1,648	1,572	2,252	3,193	3,589	2,721	4,230	5,064	2,285	1,969	496	7,068	6,633	6,080	7,093	5,859	5,915	6,311	7,066	6,453	7,178	6,091	3,078	3,384

Request 1	5,440	4,758	4,452	5,465	5,859	NA	NA	NA	NA	NA	NA	NA	NA	NA	NA	NA	NA	NA	NA	NA	NA	NA	NA	NA	NA	NA	NA	NA	NA	2,244	2,550	
Here	5,440	4,758	4,452	5,465	5,859	4,040	4,436	5,619	6,344	5,257	2,244	2,550	NA	NA	NA	NA	NA	NA	NA	NA	NA	NA	NA	NA	NA	NA	NA	NA	NA	NA	NA	NA
Delta	0	0	0	0	0	0	0	0	0	0	0	0	0	0	0	0	0	0	0	0	0	0	0	0	0	0	0	0	0	0	0	

1/8/09

WATER SOURCE		SEAF	FIELD	FLD.	WELL #	2012 WATER USAGE LANCASTER AREA												ACCUM. ACFT	ACCUM. ACFT / ACRE		
CONVENTIONAL						NOV	DEC	JAN	FEB	MAR	APR	MAY	JUN	JUL	AUG	SEP	OCT	NOV			
					WEST WELL (DW196)			0.000	2.365	3.337	34.780	43.385	37.199	33.867	34.165	26.382	5.034			226.114	
					EAST WELL (DW179)			3.656	1.651	4.560	12.204	22.486	40.248	22.280	43.444	22.871	12.396			183.168	
					BOZIGIAN YW (DW195)			0.000	0.529	4.341	16.533	11.982	15.879	27.502	14.965	0.016	0.005			93.789	
					TOTAL			3.656	4.545	12.238	63.517	77.853	93.126	83.648	92.604	48.249	17.435	0.000		513.069	#DIV/0!

Lancaster Conventional (2012)  
Bozgian Water Usage 2010-November 1 2012

WATER SOURCE	SEA / CROP	FIELD NAME	FLD. AC.	WELL #	2011 WATER USAGE												ACCU. ACFT	ACFT / ACRE		
					LANCASTER AREA															
					MONTH															
					NOV	DEC	JAN	FEB	MAR	APR	MAY	JUN	JUL	AUG	SEP	OCT	NOV			
		CONVENTIONAL																		
BOZIGIAN				WEST WELL (DW196)		9.988	0.000	23.042	31.232	63.877	68.466	1.492	60.517	60.645	5.615	0.000	0.000			324.874
BOZIGIAN				EAST WELL (DW179)	1.145	0.000	0.000	3.590	20.892	15.815	28.590	42.933	50.842	43.312	17.029	9.789	3.656			235.982
SILVERSHIELDS				BOZIGIAN YW (DW195)	5.998	3.599	0.000	8.496	11.923	19.765	33.346	29.710	20.959	10.589	2.971	0.000	0.000			147.957
TOTAL					7.143	13.587	0.000	36.118	64.047	99.268	128.402	74.136	132.318	114.546	26.214	9.789	3.656			708.213

2009 CROP WATER USAGE LANCASTER AREA																		
WATER SOURCE	FIELD NAME	FLD. AC.	WELL #	MONTH														
				NOV	DEC	JAN	FEB	MAR	APR	MAY	JUN	JUL	AUG	SEP	OCT	NOV	ACCUM. ACFT / ACRE	
	ORGANICS																	
	ACFT from AVEK bills																	
BOZIGIAN		112.50	AVEK (NORTH) 10.5 LB	0.500	0.500	0.500	0.500	0.500	0.500	0.500	0.500	0.500	0.500	0.500	0.500	0.500	0.500	117.030
BOZIGIAN		234.00	AVEK (MIDDLE) 10.5 LA-1	0.500	0.500	0.500	0.500	0.500	0.500	0.500	0.500	0.500	0.500	0.500	0.500	0.500	0.500	214.820
BOZIGIAN		114.00	AVEK (SOUTH) 10.5 LA	5.320	0.000	0.000	0.000	0.500	0.000	0.500	0.500	0.000	0.000	0.000	0.000	0.000	5.320	12.140
TOTAL		460.50		6.320	1.000	0.500	1.000	12.430	0.770	24.730	78.790	106.010	106.620	0.000	0.000	0.000	5.820	343.990

2009 WATER USAGE/CALENDAR YEAR AVEK																		
WATER SOURCE	FIELD NAME	FLD. AC.	WELL #	MONTH														
				NOV	DEC	JAN	FEB	MAR	APR	MAY	JUN	JUL	AUG	SEP	OCT	NOV	ACCUM. ACFT / ACRE	
	ORGANICS																	
	ACFT from AVEK bills																	
BOZIGIAN		112.50	AVEK (NORTH) 10.5 LB			0.500	0.500	0.500	0.770	0.500	0.500	0.500	0.500	0.500	0.500	0.500	0.500	116.530
BOZIGIAN		234.00	AVEK (MIDDLE) 10.5 LA-1			0.000	0.500	2.770	0.000	23.730	77.790	60.120	48.910	0.000	0.000	0.000	0.000	213.820
BOZIGIAN		114.00	AVEK (SOUTH) 10.5 LA			0.000	0.000	0.500	0.000	0.000	0.500	0.000	0.000	0.000	0.000	0.000	0.000	1.500
TOTAL		460.50		0.000	0.000	0.500	1.000	12.430	0.770	24.730	78.790	106.010	106.620	0.000	0.000	0.000	0.000	330.850

TOTAL AVAILABLE 2009 290.21  
 TOTAL ACFT. USED 330.850  
 TOTAL ACFT. REMAINING -40.640

SILVERSHIELDS			BOZIGIAN YW (DW195)	0.011	0.011	5.109	3.961	17.429	9.145	21.320	31.447	41.047	36.756					166.236
BOZIGIAN			WEST WELL (DW196)	6.813	1.532	10.520	1.270	10.534	19.269	63.166	77.018	56.942	74.121					321.075
BOZIGIAN			EAST WELL (DW179)	8.415	0.000	13.502	4.013	36.719	1.399	13.224	12.781	13.330	8.801					112.164
TOTAL			TOTAL	15.239	1.543	29.131	9.244	64.682	29.813	97.700	121.246	111.219	119.678	0.000	0.000	0.000	0.000	899.495

11/16/2012

2010 WATER USAGE																				
LANCASTER AREA (Organic)																				
WATER SOURCE	SEA/ CROP	FIELD NAME	FLD. AC.	WELL #	MONTH															
					NOV	DEC	JAN	FEB	MAR	APR	MAY	JUN	JUL	AUG	SEP	OCT	N			
BOZIGIAN				WEST WELL (DW196)		12.187	24.369	10.774	45.576	70.410	53.929	92.648	103.631	64.290	55.231	15.572				
BOZIGIAN				EAST WELL (DW179)	4.317	1.971	17.682	5.270	20.536	24.790	25.193	51.216	46.433	35.869	19.417	4.722	1			
TOTAL					4.317	14.158	42.051	16.044	66.114	95.200	79.122	143.864	150.064	100.159	74.648	20.294	1			

Lancaster Organic (10)  
Bozigian Water Usage 2010-November 1 2012

WATER USED AT		SEA/ CROP	FIELD NAME	FLD. AC.	WELL #	2011 WATER USAGE BOZIGIAN RANCH												ACCU M / ACFT / ACRE	
						NOV	DEC	JAN	FEB	MAR	APR	MAY	JUN	JUL	AUG	SEP	OCT	NOV	ACFT
BOZIGIAN						0.000	8.888	0.000	23.042	31.232	63.877	68.456	1.492					188.097	
BOZIGIAN						1.145	0.000	0.000	3.580	20.892	15.615	26.590	42.833					110.755	
SILVERSHIELDS						5.988	3.589	0.000	6.495	11.923	18.786	33.346	29.710					112.838	
TOTAL						7.143	13.587	0.000	35.118	64.047	98.268	128.402	74.135	0.000	0.000	0.000	0.000	421.690	#DRY/RI

2010 WATER USAGE BOZIGIAN RANCH													ACCU	ACFT	ACFT	ACRE																
WATER USED AT	SEA/ CROP	FIELD NAME	FLD. AC.	WELL #	MONTH												NOV	DEC	JAN	FEB	MAR	APR	MAY	JUN	JUL	AUG	SEP	OCT	NOV	ACCU	ACFT	ACRE
					NOV	DEC	JAN	FEB	MAR	APR	MAY	JUN	JUL	AUG	SEP	OCT																
BOZIGIAN				DW196 / WEST WELL	6.632	12.187	24.369	10.774	45.576	70.410	53.929	92.648	103.631	64.290	55.231	15.572	0.000											555.249				
BOZIGIAN				DW179 / EAST WELL	4.317	1.971	17.682	5.270	20.538	24.780	25.193	51.216	43.433	35.869	49.417	4.722	1.145											255.563				
SILVERSHIELDS				DW185 / BOZIGIAN YARD	7.527	2.815	5.043	2.295	15.353	24.938	17.331	28.370	30.793	16.708	13.241	2.683	5.998											171.095				
TOTAL					18.476	16.973	47.094	18.339	81.467	120.138	96.453	170.234	160.857	118.867	87.689	22.677	7.143										984.807					



2009 WATER USAGE BOZIGIAN RANCH													ACFT / ACRE					
WATER USED AT	SEA / CROP	FIELD NAME	FLD. AC.	WELL #	MONTH												ACFT	
					NOV	DEC	JAN	FEB	MAR	APR	MAY	JUN	JUL	AUG	SEP	OCT		NOV
BOZIGIAN					6.813	1.532	10.520	1.270	0.000	0.000	63.186	77.018	56.842	74.121	53.070	23.378	6.832	374.352
BOZIGIAN					8.415	0.000	13.502	4.013	47.253	20.668	13.224	12.781	13.330	8.801	8.670	3.815	4.317	158.889
SILVERSHIELDS					0.011	0.011	5.109	3.961	17.429	9.145	21.320	31.447	41.047	38.756	23.629	14.055	7.527	211.447
TOTAL					15.239	1.543	29.131	9.244	64.682	29.813	97.700	121.246	111.219	119.676	85.369	41.048	18.476	744.388

2008 WATER USAGE BOZIGIAN RANCH													ACCUM.	ACFT /				
WATER USED AT	SEA/ CROP	FIELD NAME	FLD. AC.	WELL #	MONTH												ACFT	ACRE
					NOV	DEC	JAN	FEB	MAR	APR	MAY	JUN	JUL	AUG	SEP	OCT		
BOZIGIAN					DW198 / WESTWELL	0.000	5.728	0.001	35.390	26.055	31.367	35.782	64.096	20.209	15.786	4.324	0.000	238.747
BOZIGIAN					DW179 / EASTWELL	0.000	3.555	0.000	20.630	18.345	27.206	55.049	69.975	27.112	9.642	2.741	0.000	234.898
SILVERSHIELDS					DW185 / BOZIGIAN YARD	0.000	0.929	3.575	10.161	15.895	9.344	18.623	21.763	16.414	10.028	5.032	0.000	111.764
TOTAL						0.000	2.380	9.283	66.181	60.305	67.919	109.454	154.834	63.734	35.456	12.097	0.000	585.199

2007 WATER USAGE BOZIGIAN RANCH													ACCUM. ACFT	ACFT / ACRE				
WATER USED AT	SEA/ CROP	FIELD NAME	FLD. AC.	WELL #	MONTH												NOV	NOV
					DEC	JAN	FEB	MAR	APR	MAY	JUN	JUL	AUG	SEP	OCT	NOV		
BOZIGIAN					5.923	10.703	6.212	4.198	22.920	22.168	0.000	37.800	33.778	14.097	11.234	14.375	2.411	185.809
BOZIGIAN				DW196 / WEST WELL	6.720	0.000	4.920	8.348	27.197	12.545	26.000	9.631	1.124	2.182	0.049	11.880	10.886	121.582
SILVERSHIELDS				DW185 / BOZIGIAN YARD	0.000	0.000	0.000	0.000	0.000	0.000	0.000	0.000	20.226	27.126	9.655	11.059	4.235	72.301
TOTAL					12.643	10.703	11.132	12.546	50.117	34.703	26.000	47.431	55.128	43.415	20.938	37.414	17.532	379.702

		2006 WATER USAGE BOZIGIAN RANCH												ACCUM.	ACFT /					
WATER USED AT	SEA/ CROP	FIELD NAME	FLD. AC.	WELL #	MONTH												ACFT	ACRE		
					NOV	DEC	JAN	FEB	MAR	APR	MAY	JUN	JUL	AUG	SEP	OCT			NOV	
BOZIGIAN				DW196 / WEST WELL	3.446	0.000	2.435	0.000	0.000	0.000	7.099	0.000	43.242	63.704	38.381	1.250	3.916	0.000	163.473	
BOZIGIAN				DW179 / EAST WELL	0.000	0.000	0.000	0.000	0.000	14.587	41.794	55.993	103.992	109.266	75.619	21.348	0.000	0.000	432.189	
SILVERSHIELDS				DW195 / BOZIGIAN YARD	0.000	0.000	0.000	0.000	36.513	25.038	70.000	71.847	0.000	0.000	0.000	0.000	0.000	0.000	203.498	
TOTAL					3.446	0.000	2.435	0.000	36.513	46.724	111.794	170.772	167.996	147.647	76.869	25.284	0.000	0.000	789.160	#DN/07

2005 WATER USAGE BOZIGIAN RANCH													ACFT / ACRE					
WATER USED AT	SEA / CROP	FIELD NAME	FLD. AC.	WELL #	MONTH												ACFT	
					NOV	DEC	JAN	FEB	MAR	APR	MAY	JUN	JUL	AUG	SEP	OCT		NOV
BOZIGIAN					0.000	0.000	0.000	0.000	23.166	10.350	22.306	80.357	66.395	74.290	59.542	19.432	3.448	378.284
BOZIGIAN				DW196 / WEST WELL	0.000	0.000	0.000	0.000	3.194	25.732	12.341	11.504	35.361	20.970	21.900	9.201	7.133	151.336
SILVERSHIELDS				DW195 / BOZIGIAN YARD	0.000	0.000	0.000	0.000	0.000	0.000	19.634	187.434	139.053	33.015	11.012	0.591	0.000	390.739
TOTAL					0.000	0.000	0.000	0.000	26.360	40.082	54.281	279.295	259.809	128.275	92.454	29.224	10.579	920.369

2004 WATER USAGE BOZIGIAN RANCH													ACCUM. ACFT /					
WATER USED AT	SEA / CROP	FIELD NAME	FLD. AC.	WELL #	MONTH												ACFT	
					NOV	DEC	JAN	FEB	MAR	APR	MAY	JUN	JUL	AUG	SEP	OCT	NOV	
BOZIGIAN				DW196 / WEST WELL	0.000	0.000	0.000	0.000	0.000	7.283	43.232	70.321	48.888	81.818	47.688	16.472	2.637	287.428
BOZIGIAN				DW176 / EAST WELL	0.000	0.000	0.000	0.000	0.000	13.684	28.237	83.523	70.219	75.307	55.475	17.892	0.000	344.337
SILVERSHIELDS				DW195 / BOZIGIAN YARD	0.000	0.000	0.000	0.000	0.000	22.584	59.228	54.346	78.355	80.752	79.749	7.480	0.000	382.484
TOTAL					0.000	0.000	0.000	0.000	0.000	43.541	130.697	208.190	197.462	217.977	182.922	40.824	2.637	1024.250

2003 WATER USAGE BOZIGIAN RANCH													ACFT /					
WATER USED, AT	SEA / CROP	FIELD NAME	FLD. AC.	WELL #	MONTH												ACFT	
					NOV	DEC	JAN	FEB	MAR	APR	MAY	JUN	JUL	AUG	SEP	OCT	NOV	ACFT
BOZIGIAN				DW196 / WEST WELL	0.000	0.000	0.000	0.000	0.502	12.737	17.443	22.666	23.763	19.657	5.912	6.419	1.873	110.392
BOZIGIAN				DW179 / EAST WELL	0.000	0.000	0.000	0.000	2.480	4.206	26.089	89.855	70.244	77.828	45.000	26.103	1.383	345.188
SILVERSHIELDS				DW195 / BOZIGIAN YARD	0.000	0.000	0.000	0.000	0.000	0.000	0.000	0.000	0.000	0.000	0.000	0.000	0.000	0.000
TOTAL					0.000	0.000	0.000	0.000	2.982	16.943	45.532	112.541	93.407	97.485	50.912	32.522	3.256	455.580

2002 WATER USAGE BOZIGIAN RANCH													ACCUM. ACFT /				
WATER USED AT	SEA / CROP	FIELD NAME	FLD. AC.	WELL #	MONTH												ACFT
					NOV	DEC	JAN	FEB	MAR	APR	MAY	JUN	JUL	AUG	SEP	OCT	NOV
BOZIGIAN				DW196 / WEST WELL			NA	NA	NA	NA	91.328	99.453	100.169	71.722	17.284	0.985	380.940
BOZIGIAN				DW179 / EAST WELL			NA	NA	NA	42.895	76.445	79.286	42.037	27.462	0.008	289.187	
SILVERSHIELDS				DW195 / BOZIGIAN YARD			NA	NA	NA	NA	NA	NA	NA	NA	NA	NA	
TOTAL										134.294	175.898	179.438	113.759	44.746	0.994	649.127	#91/01



APN's 261-193-22; 261-  
193-23;261-194-28;261-  
194-29;261-194-36

	eSolar												
	2000	2001	2002	2003	2004	2005	2006	2007	2008	2009	2010	2011	2012
AF/Year	2000	2001	2002	2003	2004	2005	2006	2007	2008	2009	2010	2011	2012
Estimated from SCE Meter 13882381 (Alesso East)	244	151	376	132	425	428	319	5	399	407			
Estimated from SCE Meter 13862382 (Alesso West)	169	248	472	186	524	457	572	389	623	612			
Other meters	?	?	?	?	?	?	?	?	?	?	?	?	?
Total estimated from SCE meters	413	399	850	318	949	885	891	383	1,022	1,019			
Grimmway Reported from well flow meters (includes Martin, Swisher and Vodermark)	685				1,223	1,228	1,755	1,338	2,512	2,752			
<b>TOTAL REPORTED GROUNDWATER USAGE</b>	?	?	?	?	?	?	?	?	?	?			
<b>Notes:</b> Pumpage estimated from power usage using the AZDWR method defined at: <a href="http://www.azwater.gov/dw/drought/htfiles/estimating%20water%20use%20final.pdf">http://www.azwater.gov/dw/drought/htfiles/estimating%20water%20use%20final.pdf</a> The meter readings are lower than Grimmway because a 3rd meter is missing and not available When the reported groundwater pumpage was greater than the estimated AW requirement, it was because Grimmway was conveying the water to adjacent parcels not included in this AW analysis. No AVEK turnouts													
<b>Consolidated Pumpage Data and Estimates</b>													
Domestic	0.83	0.83	0.83	0.83	0.83	0.83	0.83	0.83	0.83	0.83	0.83	0.83	0.83
Alesso East	342	151	376	432	425	428	319	0	508	544	313	0	0
Alesso West	342	248	472	533	524	488	586	472	744	946	544	0	0
Martin	326	297	183	509	501			154	391	454	261	0	0
Swisher	326	297	183	509	501			284	264	348	200	0	0
Vodermark	326	297	183	509	501	311	425	428	605	460	265	0	0
Total	1,664	1,290	1,401	2,494	2,453	1,229	1,756	1,338	2,512	2,752	1,585	1	1
AW requirement	1,664	1,290	1,401	2,494	2,453	1,229	1,756	1,338	2,512	2,752	1,584	1	1

Land Use Data

Map ID	Parcel Group	County	Parcel #	Acreage	Percent Net Farmable	Net Farmable	Parcels GW Imported From	Well Type	Well Production (AF)													
									2000	2001	2002	2003	2004	2005	2006	2007	2008	2009	2010	2011	2012	
0	4	Kern	359-011-02	20	90%	18	359-011-01, 359-011-005	Irrigation	526	0	268	345	344	151	422	122	235	159	259	236	181	
1	4	Kern	359-011-03	20	90%	18	359-011-01, 359-011-005															
2	4	Kern	359-011-04	20	90%	18	359-011-01, 359-011-005															
3	4	Kern	359-011-05	20	90%	18	None															
4	4	Kern	359-011-06	20	90%	18	359-011-01, 359-011-005															
5	4	Kern	359-011-07	20	90%	18	359-011-01, 359-011-005															
6	4	Kern	359-011-08	19	90%	17	359-011-01, 359-011-005															
7	4	Kern	359-011-09	19	90%	17	359-011-01, 359-011-005															
8	4	Kern	359-011-10	20	90%	18	359-011-01, 359-011-005															
9	4	Kern	359-011-11	20	90%	18	359-011-01, 359-011-005															
10	4	Kern	359-011-12	20	90%	18	359-011-01, 359-011-005															
11	4	Kern	359-011-13	20	90%	18	359-011-01, 359-011-005															
12	4	Kern	359-011-14	20	90%	18	359-011-01, 359-011-005															
13	4	Kern	359-011-15	20	90%	18	359-011-01, 359-011-005															
14	4	Kern	359-011-16	19	90%	17	359-011-01, 359-011-005															
15	4	Kern	359-011-17	19	90%	17	359-011-01, 359-011-005															
16	4	Kern	359-011-18	20	90%	18	359-011-01, 359-011-005															
17	4	Kern	359-011-19	20	90%	18	359-011-01, 359-011-005															
18	4	Kern	359-011-20	20	90%	18	359-011-01, 359-011-005															
19	4	Kern	359-011-21	19	90%	17	359-011-01, 359-011-005															
20	4	Kern	359-011-22	20	90%	18	359-011-01, 359-011-005															
21	4	Kern	359-011-23	20	90%	18	359-011-01, 359-011-005															
22	4	Kern	359-011-24	20	90%	18	359-011-01, 359-011-005															
23	4	Kern	359-011-27	3	90%	3	359-011-01, 359-011-005															
24	4	Kern	359-020-50	161	90%	145	359-011-01, 359-011-005															
25	6	Kern	359-041-05	10	90%	9	None															
26	6	Kern	359-041-07	10	90%	9	None															
27	6	Kern	359-041-08	10	90%	9	None															
28	4	Kern	359-174-01	20	90%	18	359-011-01, 359-011-005															
29	4	Kern	359-174-02	20	90%	18	359-011-01, 359-011-005															
30	4	Kern	359-174-03	20	90%	18	359-011-01, 359-011-005															
31	4	Kern	359-174-04	20	90%	18	359-011-01, 359-011-005															
32	4	Kern	359-174-05	20	90%	18	359-011-01, 359-011-005	Irrigation	0	0	0	0	0	0	0	0	0	0	0	0	0	0

Land Use Data

Map ID	Parcel Group	County	Parcel #	Acreage	Percent Net Farmable	Net Farmable	Parcels GW Imported From	Well Type	Well Production (AF)															
									2000	2001	2002	2003	2004	2005	2006	2007	2008	2009	2010	2011	2012			
33	4	Kern	359-174-06	20	90%	18	359-011-01, 359-011-005	Irrigation	0	0	0	0	0	0	0	0	0	0	0	0	0	0	0	
34	4	Kern	359-174-07	19	90%	17	359-011-01, 359-011-005	Irrigation	272	272	272	272	272	272	272	272	272	272	272	272	272	272	272	272
35	4	Kern	359-174-08	19	90%	17	359-011-01, 359-011-005	Irrigation	272	272	272	272	272	272	272	272	272	272	272	272	272	272	272	272
36	4	Kern	359-174-09	20	90%	18	359-011-01, 359-011-005	Irrigation	0	0	0	0	0	0	0	0	0	0	0	0	0	0	0	0
37	4	Kern	359-174-10	20	90%	18	359-011-01, 359-011-005	Irrigation	0	0	0	0	0	0	0	0	0	0	0	0	0	0	0	0
38	4	Kern	359-174-11	20	90%	18	359-011-01, 359-011-005	Irrigation	0	0	0	0	0	0	0	0	0	0	0	0	0	0	0	0
39	4	Kern	359-174-12	20	90%	18	359-011-01, 359-011-005	Domestic	0.83	0.83	0.83	0.83	0.83	0.83	0.83	0.83	0.83	0.83	0.83	0.83	0.83	0.83	0.83	0.83
40	4	Kern	359-174-14	2	90%	2	359-011-01, 359-011-005	Domestic	0.83	0.83	0.83	0.83	0.83	0.83	0.83	0.83	0.83	0.83	0.83	0.83	0.83	0.83	0.83	0.83
41	4	Kern	359-240-04	164	90%	147	359-011-01, 359-011-005	Domestic	0.83	0.83	0.83	0.83	0.83	0.83	0.83	0.83	0.83	0.83	0.83	0.83	0.83	0.83	0.83	0.83
42	8	Kern	359-331-17	20	90%	18	None	Irrigation	1,174	719	381	110	880	769	367	258	351	586	726	472	315			
43	8	Kern	359-331-19	20	90%	18	None	Irrigation	272	272	272	272	272	272	272	272	272	272	272	272	272	272	272	272
44	8	Kern	359-331-25	20	90%	18	None	Irrigation	681	681	571	571	571	571	571	571	571	571	571	571	571	571	571	571
45	4	Kern	359-011-01	19	99%	18	None	Irrigation	20	446	921	274	298	404	385	242	424	993	727	625	883			
56	7	Kern	359-041-30	40	90%	36	None	Irrigation	272	272	272	272	272	272	272	272	272	272	272	272	272	272	272	272
67	2	Kern	261-196-10	158	90%	142	None	Irrigation	681	681	571	571	571	571	571	571	571	571	571	571	571	571	571	571
68	15	Kern	359-041-29	40	90%	36	None	Irrigation	20	446	921	274	298	404	385	242	424	993	727	625	883			
69	15	Kern	359-041-31	40	90%	36	None	Irrigation	20	446	921	274	298	404	385	242	424	993	727	625	883			
70	15	Kern	359-041-32	40	90%	36	None	Irrigation	20	446	921	274	298	404	385	242	424	993	727	625	883			
71	5	Kern	359-175-01	72	98%	70	None	Irrigation	0	0	77	843	930	641	660	762	709	575	573	635	896			
72	5	Kern	359-175-02	2	98%	2	359-175-01, 359-321-01	Irrigation	0	0	77	843	930	641	660	762	709	575	573	635	896			
73	5	Kern	359-175-03	2	98%	2	359-175-01, 359-321-01	Irrigation	0	0	77	843	930	641	660	762	709	575	573	635	896			
74	5	Kern	359-175-04	2	98%	2	359-175-01, 359-321-01	Irrigation	0	0	77	843	930	641	660	762	709	575	573	635	896			
75	5	Kern	359-321-01	79	98%	78	None	Irrigation	0	0	77	843	930	641	660	762	709	575	573	635	896			
76	5	Kern	359-321-02	79	98%	78	359-175-01, 359-321-01	Irrigation	0	0	77	843	930	641	660	762	709	575	573	635	896			
77	5	Kern	359-324-18	20	98%	19	359-175-01, 359-321-01	Irrigation	0	0	77	843	930	641	660	762	709	575	573	635	896			
78	5	Kern	359-324-20	20	98%	20	359-175-01, 359-321-01	Irrigation	0	0	77	843	930	641	660	762	709	575	573	635	896			
79	5	Kern	359-324-21	20	98%	20	359-175-01, 359-321-01	Irrigation	0	0	77	843	930	641	660	762	709	575	573	635	896			
80	9	Kern	359-331-24	20	90%	18	None	Domestic	0.83	0.83	0.83	0.83	0.83	0.83	0.83	0.83	0.83	0.83	0.83	0.83	0.83	0.83	0.83	0.83
81	9	Kern	359-331-26	20	90%	18	None	Domestic	0.83	0.83	0.83	0.83	0.83	0.83	0.83	0.83	0.83	0.83	0.83	0.83	0.83	0.83	0.83	0.83
82	9	Kern	359-331-27	20	90%	18	None	Domestic	0.83	0.83	0.83	0.83	0.83	0.83	0.83	0.83	0.83	0.83	0.83	0.83	0.83	0.83	0.83	0.83
83	1	Kern	359-041-15	38	90%	34	359-041-27	Domestic	0.83	0.83	0.83	0.83	0.83	0.83	0.83	0.83	0.83	0.83	0.83	0.83	0.83	0.83	0.83	0.83
84	1	Kern	359-041-24	10	90%	9	359-041-27	Domestic	0.83	0.83	0.83	0.83	0.83	0.83	0.83	0.83	0.83	0.83	0.83	0.83	0.83	0.83	0.83	0.83
85	1	Kern	359-041-25	30	90%	29	359-041-27	Domestic	0.83	0.83	0.83	0.83	0.83	0.83	0.83	0.83	0.83	0.83	0.83	0.83	0.83	0.83	0.83	0.83
86	1	Kern	359-041-26	10	90%	9	359-041-27	Domestic	0.83	0.83	0.83	0.83	0.83	0.83	0.83	0.83	0.83	0.83	0.83	0.83	0.83	0.83	0.83	0.83

Land Use Data

Map ID	Parcel Group	County	Parcel #	Acreage	Percent Net Farmable	Net Farmable	Parcels GW Imported From	Well Type	Well Production (AF)														
									2000	2001	2002	2003	2004	2005	2006	2007	2008	2009	2010	2011	2012		
87	1	Kern	359-041-27	10	90%	9	None	Irrigation	369	309	309	309	309	1	1	1	1	1	1	1	1	1	
88	3	Kern	261-193-02	39	90%	35	None	None															
89	3	Kern	261-193-03	40	90%	36	None	None															
90	3	Kern	261-193-06	10	90%	9	None	None															
91	3	Kern	261-193-07	10	90%	9	None	None															
92	3	Kern	261-193-08	5	90%	4	None	None															
93	3	Kern	261-193-09	5	90%	5	None	None															
94	3	Kern	261-193-10	5	90%	5	None	None															
95	3	Kern	261-193-15	3	90%	2	261-193-22, 261-193-23, 261-194-28, 261-194-29, 261-194-36	Irrigation	342	248	472	533	524	488	568	472	744	946	544	0	0	0	0
96	3	Kern	261-193-17	3	90%	2	261-193-22, 261-193-23, 261-194-28, 261-194-29, 261-194-36	Irrigation	342	151	378	432	425	428	319	0	508	544	313	0	0	0	0
97	3	Kern	261-193-18	3	90%	2	261-193-22, 261-193-23, 261-194-28, 261-194-29, 261-194-36	Irrigation	342	151	378	432	425	428	319	0	508	544	313	0	0	0	0
98	3	Kern	261-193-20	5	90%	5	261-193-22, 261-193-23, 261-194-28, 261-194-29, 261-194-36	Irrigation	342	151	378	432	425	428	319	0	508	544	313	0	0	0	0
99	3	Kern	261-193-22	20	90%	18	None	None															
100	3	Kern	261-193-23	40	90%	36	None	None															
101	3	Kern	261-193-24	39	90%	35	261-193-22, 261-193-23, 261-194-28, 261-194-29, 261-194-36	Irrigation	326	297	183	509	501	0	0	154	391	454	261	0	0	0	0
102	3	Kern	261-193-25	20	90%	18	261-193-22, 261-193-23, 261-194-28, 261-194-29, 261-194-36	Irrigation	326	297	183	509	501	0	425	284	264	348	200	0	0	0	0
103	3	Kern	261-193-26	20	90%	18	261-193-22, 261-193-23, 261-194-28, 261-194-29, 261-194-36	Irrigation	326	297	183	509	501	0	425	284	264	348	200	0	0	0	0
104	3	Kern	261-194-28	77	90%	70	None	None															
105	3	Kern	261-194-29	77	90%	70	None	None															
106	3	Kern	261-194-30	39	90%	35	261-193-22, 261-193-23, 261-194-28, 261-194-29, 261-194-36	Irrigation	326	297	183	509	501	0	425	284	264	348	200	0	0	0	0
107	3	Kern	261-194-36	20	90%	18	None	None															
108	3	Kern	261-194-37	20	90%	18	261-193-22, 261-193-23, 261-194-28, 261-194-29, 261-194-36	Irrigation	326	297	183	509	501	0	425	284	264	348	200	0	0	0	0
109	3	Kern	261-194-38	20	90%	18	None	None															
110	3	Kern	261-194-39	20	90%	18	None	None															
111	3	Kern	261-194-45	19	90%	17	None	None															
112	3	Kern	261-194-46	20	90%	18	None	None															
113	3	Kern	261-194-47	20	90%	18	None	None															
114	3	Kern	261-196-08	318	90%	286	261-193-22, 261-193-23, 261-194-28, 261-194-29, 261-194-36	Irrigation	326	297	183	509	501	311	425	428	605	460	265	0	0	0	0
115	3	Kern	261-193-05	10	90%	9	None	None															
116	3	Kern	261-193-19	5	90%	5	261-193-22, 261-193-23, 261-194-28, 261-194-29, 261-194-36	Irrigation	326	297	183	509	501	0	425	284	264	348	200	0	0	0	0
117	3	Kern	261-194-35	40	90%	36	261-193-22, 261-193-23, 261-194-28, 261-194-29, 261-194-36	Irrigation	326	297	183	509	501	0	425	284	264	348	200	0	0	0	0
118	11	LA	3258-001-028	79	90%	71	None	None															

Land Use Data

Map ID	Parcel Group	County	Parcel #	Acreage	Percent Net Farmable	Net Farmable	Parcels GW Imported From	Well Type	Well Production (AF)															
									2000	2001	2002	2003	2004	2005	2006	2007	2008	2009	2010	2011	2012			
119	13	LA	3258-001-040	81	90%	73	3258-001-030																	
120	14	LA	3261-001-004	157	90%	141	3258-001-031																	
121	10	LA	3261-001-002	72	90%	65	3258-001-031																	
122	11	LA	3261-001-003	79	90%	71	3258-001-031																	
123	11	LA	3258-001-001	71	90%	64	None	Irrigation	396	519	125	123	0	0	0	271	271	271	271	271	0	0	0	
124	12	LA	3258-001-024	40	90%	36	3258-001-030																	
126	15	LA	3258-001-031	466	90%	420																		
127	15	LA	3258-001-030	157	90%	142																		
128	11	LA	3258-001-025	1	90%	1	None																	

Parcel Group	Former Owner	Parcels	Average (AF) 2000-2004
1	Arcuri	83-87	309
2	Bejilian	67	615
3	eSolar	88-117	1,860
4	Grimmway	0-24, 28-41, 45	910
5	Harter	71-79	762
6	Robertson & Nikkel	25-27	0
7	Sandhu	56	272
8	Collins, Doyle, Wong	42-44	0
9	Bagnell, Faber	80-82	0.8
10	Dentils	121	247
11	Hemmerling	118, 122, 123, 123A	902
12	O'Neil	124	220
13	Reca	119	448
14	Wilson	120	0
<b>Total</b>			<b>6,547</b>

here  
here  
here

here

here

here

here

here

Came from Maritorena to west

122 came from Maritorena to west

Came from Maritorena to east

Came from Maritorena to east

Came from Maritorena to west

		Reported Groundwater Pumpage (AF)														Assumed Groundwater Pumpage (AF)													
Parcel Group	Former Owner	Parcels	2000	2001	2002	2003	2004	2005	2006	2007	2008	2009	2010	2011	2012	2000	2001	2002	2003	2004	2005	2006	2007	2008	2009	2010	2011	2012	
1	Arcuri	83-87	?	?	?	?	?	?	?	?	?	?	?	?	?	?	?	?	?	?	?	?	?	?	?	?	?	?	?
2	Bejulian	67	?	?	?	?	?	?	?	?	?	?	?	?	?	?	?	?	?	?	?	?	?	?	?	?	?	?	?
3	eSolar	88-117	?	?	?	?	?	?	?	?	?	?	?	?	?	?	?	?	?	?	?	?	?	?	?	?	?	?	?
4	Grimmway	0-24, 28-43, 45	?	?	649	456	1,024	920	789	380	585	744	985	708	496	?	1,700	720	650	456	1,025	921	790	381	586	745	986	709	496
5	Harter	71-79	20	446	998	1,117	1,228	1,045	1,045	1,004	1,133	1,568	1,300	1,260	?	20	446	998	1,117	1,228	1,045	1,045	1,004	1,133	1,568	1,300	1,260	1,779	
6	Robertson & Nikkel	25-27	?	?	?	?	?	?	?	?	?	?	?	?	?	?	?	?	?	?	?	?	?	?	?	?	?	?	?
7	Sandhu	56	?	?	?	?	?	?	?	?	?	?	?	?	?	?	?	?	?	?	?	?	?	?	?	?	?	?	?
8	Collins, Doyle, Wong	42-44	?	?	?	?	?	?	?	?	?	?	?	?	?	?	?	?	?	?	?	?	?	?	?	?	?	?	?
9	Bagnell, Faber	80-82	?	?	?	?	?	?	?	?	?	?	?	?	?	?	?	?	?	?	?	?	?	?	?	?	?	?	?
10	Dennis	121	?	?	?	?	?	?	?	?	?	?	?	?	?	?	?	?	?	?	?	?	?	?	?	?	?	?	?
11	Hemmerling	118,122,123,123A	?	?	?	?	?	?	?	?	?	?	?	?	?	?	?	?	?	?	?	?	?	?	?	?	?	?	?
12	O'Neil	124	?	?	?	?	?	?	?	?	?	?	?	?	?	?	?	?	?	?	?	?	?	?	?	?	?	?	?
13	Reca	119	?	?	?	?	?	?	?	?	?	?	?	?	?	?	?	?	?	?	?	?	?	?	?	?	?	?	?
14	Wilson	120	?	?	?	?	?	?	?	?	?	?	?	?	?	?	?	?	?	?	?	?	?	?	?	?	?	?	?
	<b>Total</b>		<b>20</b>	<b>446</b>	<b>1,648</b>	<b>1,572</b>	<b>2,252</b>	<b>3,193</b>	<b>3,589</b>	<b>2,721</b>	<b>4,230</b>	<b>5,064</b>	<b>2,285</b>	<b>1,969</b>	<b>496</b>	<b>7,068</b>	<b>6,633</b>	<b>6,080</b>	<b>7,093</b>	<b>5,859</b>	<b>5,915</b>	<b>6,311</b>	<b>7,066</b>	<b>6,453</b>	<b>7,178</b>	<b>6,091</b>	<b>3,078</b>	<b>3,384</b>	

Request 1	5,440	4,758	4,452	5,465	5,859	NA	NA	NA	NA	NA	NA	NA	NA	2,244	2,550
Here	5,440	4,758	4,452	5,465	5,859	4,040	4,436	4,110	5,619	6,344	5,257	2,244	2,550		
Delta	0	0	0	0	0	0	0	0	0	0	0	0	0		



WDS Lands H2O Usage

Ranch Name	2009	2008	2007	2006	2005	2004	2003	2002	2001	2000	1999	1998
Alesso East	544,135	508,086	8,157	904,900	916,412					684,747	1,319,598	1,085,500
Alesso West	945,559	743,740	471,764									
Martin	454,109	391,062	154,385									
Swisher	348,130	263,958	283,958	850,090								
Vodermark	459,608	604,748	427,552		311,398							
<b>Groundwater Totals</b>	<b>2,751,541</b>	<b>2,511,594</b>	<b>1,345,816</b>	<b>1,754,990</b>	<b>1,227,810</b>	<b>-</b>	<b>-</b>	<b>-</b>	<b>-</b>	<b>684,747</b>	<b>1,319,598</b>	<b>1,085,500</b>

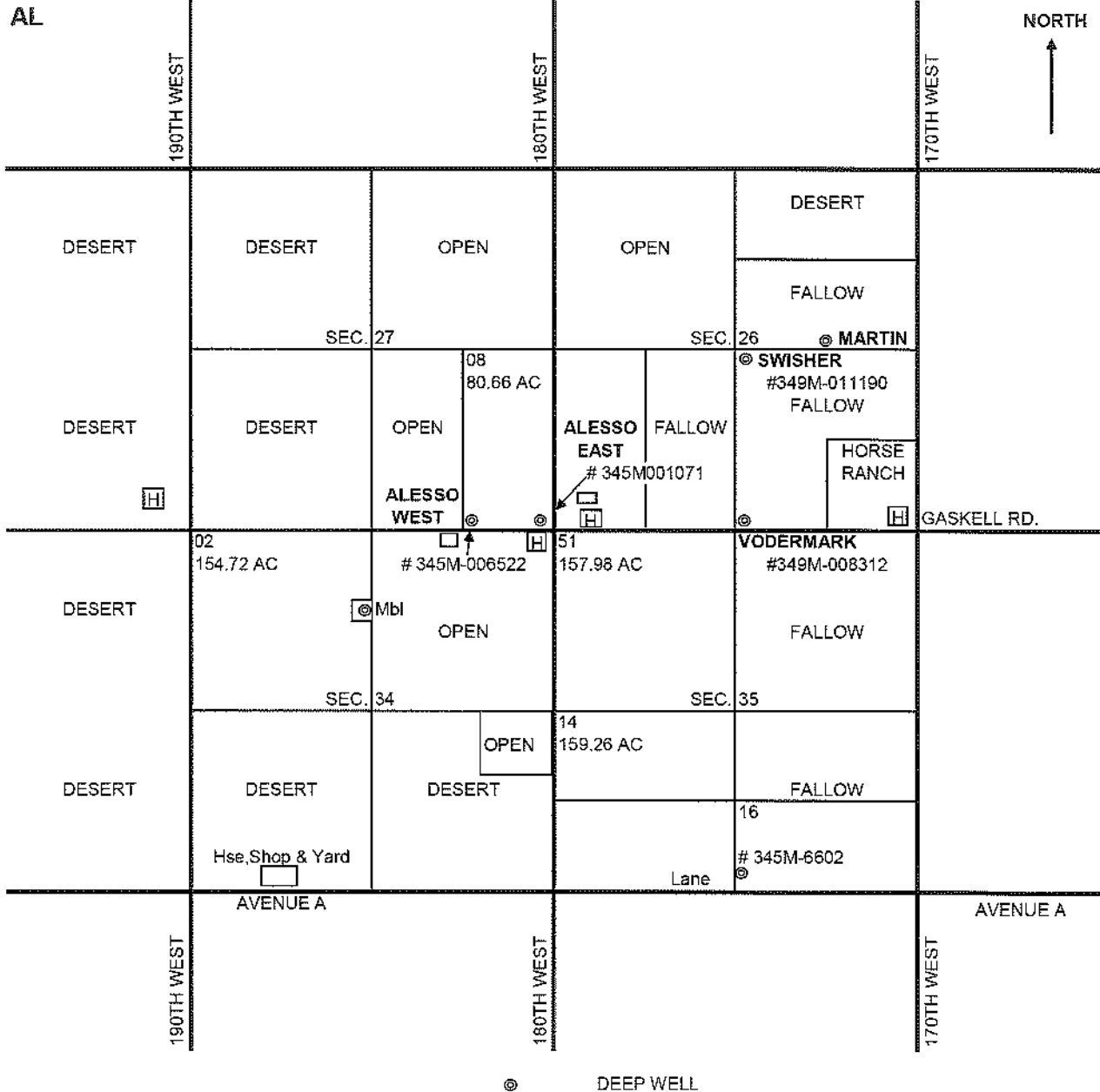
1998-2009 12,681,596

Combined Well Usage Measured through one Meter.  
 Where no number is inputted, well may have been utilized by others?  
 Calandri? - Have Crop Maps

ALESSO RANCH

KERN COUNTY

T9N R15W



GRIMMWAY ENTERPRISES, INC.  
P.O. BOX 81498  
BAKERSFIELD, CA 93380-1498  
(661) 845-5704

Alesso-Lane Wells  
GEI Water Usage on 170th West Lands 1998-2009

WDS000171

1/8/09

2009 WATER USAGE LANCASTER AREA													ACCUM	ACFT /					
WATER SOURCE	SEA/ CROP	FIELD NAME	FLD. AC.	WELL #	MONTH												ACFT	ACRE	
					NOV	DEC	JAN	FEB	MAR	APR	MAY	JUN	JUL	AUG	SEP	OCT			NOV
ALESSONIANE																			
ALESSONIANE						0.019	0.000	0.000	0.000	285.835	-44.551	115.535	113.515	146.471	129.290	108.465	1.848		945.559
						3.567	11.849	0.758	0.000	32.895	35.592	86.156	78.288	108.566	99.897	96.743	0.000		544.135
GRAHAMGILLETTE							0.000	0.000	0.000	31.806	30.559	74.007	30.146	98.593	69.486	0.000	421.100		454.109
GRAHAMGILLETTE							0.218	0.000	0.000	26.729	27.969	50.637	29.162	92.431	70.771	17.390	13.862		346.130
GRAHAMGILLETTE						18.963	8.363	25.630	4.691	60.995	52.535	89.507	65.172	89.584	21.167	0.000	0.000		459.608
TOTAL						22.530	20.231	26.606	4.691	460.067	191.206	415.842	319.283	534.115	390.621	212.628	136.530	17.191	2761.541

Lancaster Conventional (09)  
GEI Water Usage on 170th West Lands 1998-2008

11/2/2012

2008 WATER USAGE LANCASTER AREA												ACFT / ACRE					
WATER SOURCE	SEA/ CROP	FIELD NAME	FLD. AC.	WELL #	MONTH												ACFT / ACRE
					NOV	DEC	JAN	FEB	MAR	APR	MAY	JUN	JUL	AUG	SEP	OCT	
ALESSO/LANE				LANE, ALESSO E. & W.	0.000	0.000	0.000	5.461	44.005	108.162	94.235	116.240	164.874	136.168	52.373	21.222	743.740
ALESSO/LANE				LANE, ALESSO E. & W.	0.000	0.000	0.000	-0.081	6.237	79.570	72.784	88.711	115.699	89.439	37.952	17.613	509.086
GRAHAMGILLETTE				MARTINE WELL	0.341	0.000	0.000	0.000	35.764	40.112	47.979	97.933	92.494	61.220	6.679	8.540	391.062
GRAHAMGILLETTE				SWISHER WELL	0.000	0.168	3.262	0.564	25.173	26.296	0.000	34.921	87.496	50.998	9.497	20.452	283.958
GRAHAMGILLETTE				VODERMARK WELL	22.321	40.175	12.812	0.844	52.879	58.305	60.972	113.808	122.468	72.023	20.239	27.982	604.746
TOTAL					22.662	40.343	21.174	6.980	164.058	313.445	275.970	451.813	563.051	409.849	126.740	95.709	2511.594

11/2/2012

2007 WATER USAGE LANCASTER AREA																									
WATER SOURCE	SEA / CROP	FIELD NAME	FLD. AC.	WELL #	MONTH												ACFT	ACFT / ACRE							
					NOV	DEC	JAN	FEB	MAR	APR	MAY	JUN	JUL	AUG	SEP	OCT			NOV	NOV	ACFT				
ALESSO/LANE								0.000	0.000	0.000	0.000	0.000	0.000	0.000	0.000	0.000	0.000	0.000	0.000	0.000	0.000	0.000	8.157		
ALESSO/LANE								0.000	0.000	0.000	0.000	0.000	0.000	0.000	0.000	0.000	0.000	0.000	0.000	0.000	0.000	0.000	0.000		
GRAHAM/GILLETTE								0.000	0.000	0.000	0.000	48.469	41.388	43.488	7.030	5.822	9.855	0.341	154.385						
GRAHAM/GILLETTE								0.000	0.000	0.000	0.000	137.228	0.000	13.958	39.782	7.810	4.197	0.000	283.956						
GRAHAM/GILLETTE								0.000	0.000	0.000	0.000	84.843	92.667	86.672	106.840	23.597	10.612	22.321	427.852						
GRAHAM/GILLETTE								0.000	0.000	0.000	0.000	63.765	75.922	87.034	118.070	25.815	6.585	0.000	471.704						
TOTAL								0.000	0.000	0.000	207.215	228.636	231.151	271.722	63.144	31.249	30.819		1346.816						0.526





11/1/00

2000 WATER USAGE LANCASTER AREA																		
WATER SOURCE	SEA/ CROP	FIELD NAME	FLD. AC.	WELL #	MONTH												ACCU. ACFT	ACFT / ACRE
					DEC	JAN	FEB	MAR	APR	MAY	JUN	JUL	AUG	SEP	OCT	NOV		
CONVENTIONAL																		
ALESSO	SIS CA	35-3	160.37	N/A	0.000	0.000	0.000	0.000	38.889	76.897	111.331	176.380	158.584	107.935	14.731	0.000	684.747	4.270
TOTAL			160.37		0.000	0.000	0.000	0.000	38.889	76.897	111.331	176.380	158.584	107.935	14.731	0.000	684.747	4.270
ORGANICS																		
TOTAL			0		0.000	0.000	0.000	0.000	0.000	0.000	0.000	0.000	0.000	0.000	0.000	0.000	0.000	#DIV/0!
MONTHLY TOTAL			160.37		0.000	0.000	0.000	38.889	76.897	111.331	176.380	158.584	107.935	14.731	0.000	684.747	4.270	

GEI Water Usage on 170th West Lands 1988-2009





1998 WATER USAGE LANCASTER AREA																		
WATER SOURCE	SEA / CROP	FIELD NAME	FLD. AC.	WELL #	MONTH												ACCUM. ACFT / ACRE	
					JAN	FEB	MAR	APR	MAY	JUN	JUL	AUG	SEP	OCT	NOV	DEC	ACFT	ACRE
ALESSO	S/S CA	35-1/35-3	310	N/A	0.000	0.000	0.000	0.000	97.763	125.285	295.577	317.851	171.324	73.621	4.079	0.000	1085.500	3.502
TOTAL			310		0.000	0.000	0.000	0.000	97.763	125.285	295.577	317.851	171.324	73.621	4.079	0.000	1085.500	3.502

WDS Lands H2O Usage

Ranch Name	Pumped Ground Water in ACFT											
	2009	2008	2007	2006	2005	2004	2003	2002	2001	2000	1999	1998
Alesso East	544.135	508.086	0.000	904.900	916.412					684.747	1319.598	1085.500
Alesso West	945.559	743.740	471.764									
Martin	454.109	391.062	154.385			1223.061						
Swisher	348.130	263.958	283.958	850.090								
Vodermark	459.608	604.748	427.552		311.398							
<b>Groundwater Totals</b>	<b>2,751.541</b>	<b>2,511.594</b>	<b>1,337.659</b>	<b>1,754.990</b>	<b>1,227.810</b>	<b>1,223.061</b>	<b>-</b>	<b>-</b>	<b>-</b>	<b>684.747</b>	<b>1,319.598</b>	<b>1,085.500</b>

**1998-2009 13,896.500**

Combined Well Usage Measured through one Meter.  
Where no number is inputted, well may have been utilized by others?

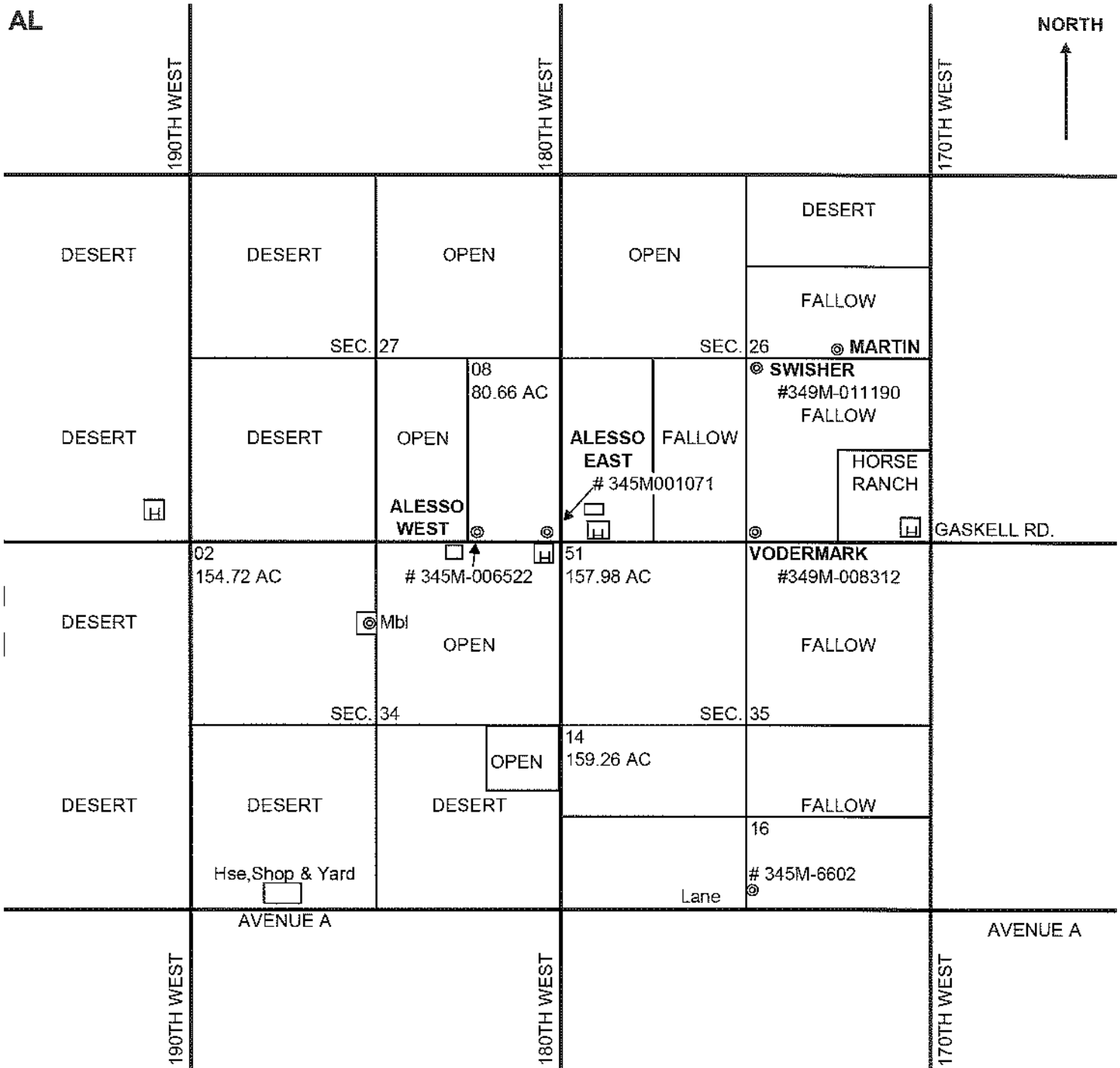
ALESSO RANCH

KERN COUNTY

T9N R15W

AL

NORTH



⊙ DEEP WELL

GRIMMWAY ENTERPRISES, INC.  
P.O. BOX 81498  
BAKERSFIELD, CA 93380-1498  
(861) 845-5704

Alesso-Lane  
eSolar Previously Farmed Lands by Grimmway

WDS000181

# EXHIBIT "G"

APN's 359-011-02; 359-011-03; 359-011-04;  
359-011-05; 359-011-06; 359-011-07; 359-  
011-08; 359-011-09; 359-011-10; 359-011-  
11; 359-011-12; 359-011-13; 359-011-14;  
359-011-15; 359-011-16; 359-011-17; 359-  
011-18; 359-011-19; 359-011-20; 359-011-  
21; 359-011-22; 359-011-23; 359-011-24;  
359-011-27; 359-020-50; 359-174-01; 359-  
174-02; 359-174-03; 359-174-04; 359-174-  
05; 359-174-06; 359-174-07; 359-174-08;  
359-174-09; 359-174-10; 359-174-11; 359-  
174-12; 359-174-14; 359-240-04; 359-011-01

AVEK West Feeder Deliveries 1975 through 2005

AVE CA. POPPY PRES	LOCATION	JAN	FEB	MAR	APR	MAY	JUN	JUL	AUG	SEPT	OCT	NOV	DEC	TOTAL
160 W	14R	0	0	0	0	0.5	0	0	0	0	0.8	0.5	0	0.5
140th W	14R	0	0	0	0	0	0	0	0	0	0	0	0	0
140th W	6.0L	0	0	0	0	0	0	0	0	0	0	0	0	0
140th W	6.0L	0	0	0	0	0	0	0	0	0	0	0	0	0
140th W	6.0R	0	0	0	0	0	0	0	0	0	0	0	0	0
140th W	6.6R	0	0	0	0	93.27	155.59	107.19	200.16	110.87	57.19	0	0	724.27
140th W	6.6R(So)	0	2.39	61	109.31	67.74	142.99	284.33	165.09	98.78	0	0	0	931.63
140th W	7.0L	0	0	0	0	0	0	0	0	0	0	0	0	0
140th W	7.5R	0	0	0	0	61.47	59.12	25	86.3	77.19	16.02	0	0	325.1
140th W	7.6L	0	0	0	0	0	0	0	0	0	0	0	0	0
140th W	9.0LA	0	0	0	0	0	0	0	0	0	0	0	0	0
140th W	9.0LB	0	0	0	0	0	0	0	0	0	0	0	0	0
140th W	9.0LD	0	0	0	5.2	72.39	85.71	150.69	162.37	118.5	56.8	45.6	93.35	790.61
125th W	10.5LA 1"	0	0	0	0	0.5	0	0	0	0	0	0	0	0
25th W (So)	10.5LA 10"	29.1	7.56	35.97	0	5.24	39.21	122.46	122.55	134.47	93.24	39.88	2.36	622.54
125th W (M)	10.5LA 12"	23.42	14.02	75.6	0	48.02	102.09	152.61	183.9	174.19	147.33	68.22	0	995.34
25th W (No)	10.5LB 12"	0	0	0	0	0.5	0.5	0.5	0.5	0.5	0.5	0.5	0.5	4
120th W	10.8L	0	21.61	45	64.66	97.15	119.35	84.43	22.19	0	0.5	0	0	454.89
115th W	11.6R2	0	0	0	0	0	0	0	0	0	0	0	0	0
115th W	11.6R3	51.8	36.94	71.05	0	50.05	139.55	117.91	6.39	0	0.5	0	0	625.88
107th W	12.3R1	0	0	0	0	0	4.07	16.06	0	0	0	0	0	70.12
107th W	12.3R2	0	0	0	0	0	0	0	0	0	0	0	0	0
105th W	12.5L	0	0	0	0	0	0	0	0	0	0	0	0	0
100th W	13.0R	0	0	0	0	0	42.85	58.34	0.5	0	0	0	0	124.75
90th W	13.8R	0	0	0	0	0	81.6	9.88	7.73	0	0.5	0	0	99.71
90th W (NE)	13.9L	0	0	0	0	0	0	0	0	0	0	0	0	0
90th W (SE)	13.9L	0	0	0	0	0	0	0	0	0	0	0	0	0
80th W	14.9R1 (S)	0	0	0	0	0	0	0	0	0	0	0	0	0
72nd W	15.7L	0	0	0	0	0	0	0	0	0	0	0	0	0
65th W	16.5R	0	0	0	0	0	24.85	46.42	123.31	110.48	23.48	0	0.91	329.45
62nd W	16.7L	0	0	0	0	0	0	0	0	0	0	0	0	0
42nd W	20.2L	0	0	0	0	0	0	0	0	0	0	0	0	0
42nd W	20.2L1	0	0	0	0	0	0	0	0	0	0	0	0	0
35th W	21.7L	0.5	0.5	0.5	0.5	0.86	3.28	3.13	4.35	4.1	2.9	2.39	0.5	23.51
DAYS		34	28	28	28	28	35	28	35	28	28	35	28	366
		104.82	83.02	294.32	506.77	950.19	1059.59	1445.01	922.75	499.04	157.59	98.12	7.94	6129.16

AVE CA. POPPY PRES	LOCATION	JAN	FEB	MAR	APR	MAY	JUN	JUL	AUG	SEPT	OCT	NOV	DEC	TOTAL
160 W (HEALY)	14R	0	0	0	0	0.5	0	0	0	0	0	0	0.5	1.5
140th W	14R	44.8	13.81	168.5	0	187.58	337.88	320.56	457.97	320.35	286.11	165.14	22.25	2332.96
140th W	6.0L	129.64	5.92	0	0	121.07	291.18	298.89	341.66	344.22	269.51	107.67	44.27	1975.42
140th W	6.0R	0	0	2.07	0	93.33	99.44	196.33	52.26	52.26	3.59	0	0	542.33
140th W	6.6R	0	0	11.84	0	298.11	209.72	240.07	289.49	192.37	159.25	125.95	0	1561.71
140th W	6.6R(So)	0	0	48.74	0	102.75	32.7	124.48	214.41	73.37	0	0	0	596.45
140th W	7.0L	28.12	0	70.71	0	151.8	114.82	132.1	102.7	90.86	118.58	1.67	70.16	908.46
140th W	7.5R	0	0	49.15	0	209.8	175.4	179.1	242.33	198.91	178.75	104.68	0	1338.12
140th W	7.5R1	85.71	22.62	128.12	0	276.12	266.35	243.61	323.1	227.05	206.15	115.86	33.97	1963.97
140th W	9.0LA	4.99	0	0	0	0	0	0	0	0	0	0	0	4.99
140th W	9.0LB (WEST)	0	0	3.65	0	73.45	170.2	184	258.22	195	185.2	61.92	8.44	1159.13
140th W	9.0LB EAST (	28.05	85.39	94.37	0	173.16	156.45	243.59	309	137.63	115.04	68.77	8.44	1419.89
140th W	9.0LB So(VAN)	0	0	0	0	0	0	0	0	0	0	0	0	0
140th W	9.0LD	0	0	0	0	0	0	0	0	0	0	0	0	0
125th W	10.5LA 1"	0.5	0.5	0.5	0.5	0.62	0.57	0.86	1.13	0.5	0.5	0.5	0.5	7.18
25th W (So)	10.5LA 10"	5.95	0.5	0	0	24.79	62.1	90.93	202.67	168.21	117.37	34.2	3.97	771.8
125th W (M)	10.5LA 12"	6.05	15.3	0	0	77.45	131.87	146.93	223.86	184.76	122.88	78.95	42.64	1081.26
25th W (No)	10.5LB 12"	0	0	0	0	0	0	1.97	0	0	0	0	0	2.47
620th W	10.8L1 (N)	0.5	0.5	0.5	0.5	212.39	83.29	98.65	113.37	81.84	100	75.13	7.14	789.8
6215th W	11.6R1	0	0	0	0	0	0	0	0	0	0	0	0	0
6215th W	11.6R2	0.5	0.5	0.5	0.5	37.8	9.07	98.65	209.6	165.15	100.92	31.37	54.33	708.39
107th W	12.3R1	0	0	21.41	0	73.66	66.64	70.51	104.21	83.94	89.53	68.78	12.87	591.55

AVEK West Feeder Deliveries 1976 through 2005

DATE	2004												TOTAL	
	JAN	FEB	MAR	APR	MAY	JUN	JUL	AUG	SEPT	OCT	NOV	DEC		
107th W	0	0	0	0	2.01	42.25	87.59	249.19	190.5	83.7	0	0	0	655.24
105th W	78.5	140.99	0	196.61	353.5	407.69	344.93	419.35	325.85	313.85	205.87	0	0	2787.14
100th W	0	0	0	67.1	95.55	96.64	120.16	153.89	173.66	142.24	123.04	0	7.34	979.62
90th W	0	0	0	0	0	29.14	24.15	57.56	50.72	27.95	0	0	0	189.32
90th W (NE)	0	0	0	0	105.59	170.85	148.38	337.78	122.9	51.15	160.6	0	0	1097.25
90th W (SE)	0	0	0	21.92	6.73	104.93	87.38	109.4	171.41	0	0	33.99	0	435.76
14.9R1 (S)	0	0	0	0	0	21.74	19.74	40.38	35.34	0	0.5	0	0	117.7
80th W	0	0	0	4.81	17.78	6.7	9.28	18.47	21.24	17.49	4.86	0	0	100.63
72nd W	0	0	0	0	147.85	89.5	203.07	328.79	112.93	46.27	32.16	0	0	960.57
15.7L	16.73	0	0	0	25.25	31.19	192.65	159.56	174.61	107.46	18.3	0	0	725.75
16.5R	0	0	0	0	0	0	0	0	0	0	0	0	0	0
16.7L	0	0	0	0	0	0	0	0	0	0	0	0	0	0
20.2L	0	0	0	0	0	0	0	0	0	0	0	0	0	0
20.2L1 (BISC)	6.75	67.85	21.79	0	0	144.06	86.26	0	0	0	0	0	0	470.7
21.7L	0.57	0.58	0.58	0.58	2.3	2.69	4.59	5.49	3.61	3.05	2.32	0.5	0.5	26.7
35th W	33	29	28	28	35	28	35	28	28	28	35	28	32	367
DAYS	437.36	354.38	913.37	2920.32	3301.48	3960.32	5556.17	3799.19	2846.54	1588.24	297.11	329.48	26303.96	0

DATE	2004												TOTAL	
	JAN	FEB	MAR	APR	MAY	JUN	JUL	AUG	SEPT	OCT	NOV	DEC		
34th W & FELSITE	34.83	81.26	54.08	0	28.08	62.66	112.31	145.56	135.13	72.47	26.17	66.77	0	819.32
25th W & FELSITE	0	0	0	0	0	0	0	0	0	0	0	0	0	0
SIERRA HWY	14.46	10.51	16.69	0	21.79	36.32	33.31	43.7	33.97	30.05	25.16	13.46	12.22	291.64
WPS	0	0	0	0	0	3.77	11.48	13.63	10.49	2.3	0.44	-0.61	-0.21	41.29
FWY 14 (865000D2)	1.77	0.91	1.26	0	1.65	1.91	0.98	1.4	1.29	0.88	0.89	0.61	0.71	14.26
ROSAmond BLVD & HWY 58	129.47	66.89	195.53	201.98	207.48	193.58	248.85	173.01	145.98	130.56	108.51	85.54	1887.38	
MFZ	0.5	0.5	0.5	0.5	0.5	0.5	0.5	0.5	0.5	0.5	0.5	0.5	0.5	6
CLAY MINE RD	0.54	0.51	0.5	0.5	4.01	3.26	1.67	1.42	2.08	1.85	0.5	1.17	0.5	18.01
BORAX RD	2.04	2.42	0.77	7.17	32.75	20.32	23.23	206.23	156.11	196.62	27.1	4.73	1.35	160.56
BORAX RD	39.54	24.42	81.15	86.92	158.24	166.28	206.23	156.11	156.53	102.65	28.76	28.76	1251.14	
BORAX RD	143.06	128.07	142.01	134.87	169.92	161.68	208.72	178.1	157.66	162.85	25.8	143.86	1828.33	
BORON PS (METER HEAD)	21.83	18.69	28.51	37.79	55.38	38.65	48.53	30.79	25.82	8.46	9.63	9.22	349.47	
SOUTH OF BORON	9.94	5.09	0.5	0.5	0.5	5.91	17.63	16.88	16.88	19.63	7	4.92	98.17	
CAL CITY BLVD	0.5	0.5	9.95	33.03	168.95	139.57	171.15	142.02	95.85	23.14	0	16.74	801.4	
DAYS	398.48	339.77	501.45	558.29	901.68	886.24	1130.35	899.43	729.14	535.39	382.44	304.11	7568.97	

DATE	2000												TOTAL
	JAN	FEB	MAR	APR	MAY	JUN	JUL	AUG	SEPT	OCT	NOV	DEC	
34th W & FELSITE	39.13	5.86	2.74	75.71	110.86	176.93	210.36	252.87	196.44	161.29	56.18	37.38	1325.75
25th W & FELSITE	0	0	0	0	0	0	0	0	0	0	0	0	0
SIERRA HWY	13.97	11.34	14.63	29.58	29.64	36.22	46.56	34.55	29.47	27.96	14.57	16.3	304.79
MPS	1.84	0.31	0.18	4.03	8.17	11.91	24.61	31.8	12.91	10.97	11.7	0.95	119.38
FWY 14 (865000D2)	0.5	0.54	0.69	1.19	0.72	1.05	0.92	1.06	0.58	0.5	0.78	1.02	9.55
SILVER QUEEN RD	0	0	0	0	0	0	0	0	0	0	0	0	0
ROSAmond BLVD & HWY 58	142.67	137.15	208.97	283.87	243.8	304.97	382.39	280.22	264.12	212.29	159.73	103.84	2724.03
MFZ	0.5	0.5	0.5	0.5	0.5	0.5	0.5	0.5	0.5	0.5	0.5	0.5	6
CLAY MINE RD	1.59	0.5	2.27	0.5	0.5	7.75	4.93	0.5	0.5	0.66	1.11	1.74	22.55
BORAX RD	0.5	0.5	0.5	0.62	0.75	1.92	2.66	2.17	1.61	2.12	1.02	0.75	15.12
BORAX RD	72.77	62.2	90.96	147.11	124.03	142.68	209	161.87	141.3	108.05	58.21	43.03	1361.21
BORAX RD	194.34	158.36	169.91	200.19	172.1	144.81	173.8	155.37	134.3	161.11	146.81	151.17	1952.27
BORON PS (METER HEAD)	8.26	1.47	3.8	21.04	33.81	41.92	60.31	47.38	34.84	35.57	18.33	21.71	328.44
SOUTH OF BORON	15.1	18.95	21.51	27.49	31.61	31.61	37.14	28.07	31.11	31.68	22.07	21.59	308.05
CAL CITY BLVD	3.02	2.82	3.14	2.82	19.7	71.4	83.99	66.38	70	3.5	4.16	0.5	331.43
DAYS	484.19	400.51	519.8	794.65	766.31	973.67	1237.17	1062.74	917.68	756.2	495.17	400.48	8808.57



AVEK West Feeder Deliveries 1976 through 2005

LOCATION	2004	2003	2002	2001	2000	1999	1998	1997	1996	1995	1994	1993	1992	1991
160th W				2001	2000	1999	1998	1997	1996	1995	1994	1993	1992	1991
140th W	2	6	6	1596	2334	1117	4	298	3				16	6
140th W			1483	1567	1975	1564								
6.0L					542	285	383	376	386					
140th W	1656	492	717	1527	2158	1556	1082	1459	1322	594	606	826	286	
140th W				543	908	1016	963	1649	1749	2017	2235	1490	838	
140th W	325	27	779	547	1338	1602	858	1344	1050	919	1357	1194	479	
140th W			2	783	1964	2127	1346	1801	1907	854	1112			
140th W					5	461	315	579	518	525				
9.0LA	791	470	179	2274	2579	2414	1634	594	508	333			-448	-1799
140th W						1117	231	458	392	344				
9.0LD						598	562	415	670	57	9	7	2	
140th W	628	603	1006	469	779	598	562	415	670	57	9	7	2	
125th W	995	759	1108	1090	1081	593	308	274	883	90				
125th W	4	4	31	367	2	39	357	512	519	882				
10.5LB	455	108	982	795	790	844	669	855	221					
10.8L														
11.6R1														
115th W	626	867	842	829	708	635	208	805	182	447	204	234	117	
115th W	70	906	550	972	1247	706	813	1835	950	851	826	482	46	
107th W				326	2787	2982	1799	2815	2924	2119	2139	1157.61		
105th W			77					564	377	460	668	162		
100th W	125	107	119	491	190	111	125	258	199	405	262	269	253	
100th W	100	378	119	853	1097	973	603	662	164					
13.9L			3	397	436		293	310	52					
13.9R			194	244	219	561	402	475		4	1	4	285	
14.9R														
15.5L			129	722	961	1081	1	2213	917	509	509	845		-2161
15.7L			284	403	726	834	721	643	140					
16.5R	329	1	158	449	471	178	457	462	641					
16.7L		489		676			543	639	161	82				
20.2L														
21.5L														
21.7L	24	23	25	27	27	28	28	34	38	31	27	31	27	68
34th W & Feliste	819	947	607	672	1326	1216	764	530	480	1193	1074	1050	771	434
25th W & Falsite	292	283	312	307	305	296	251	278	115	187	116	127	41	33
Sierra Hwy	41	93	214	173	119	217	70	48	173	269	290	117	86	
NPS	14	17	10	13	10	22	92	103	166	118	380	78	433	468
FWY 14									43	67	55	67	40	80
Silver Queen Rd														
Silver Queen														
Rosamond BLVD & HWY 58	1887	2806	2155	2225	2724	1782	1737	1357	1675	1171	2103	1345.42		
NF2	6	6	6	7	6	6	6	8	7	9	7	6	6	6
Clay Mine RD	18	22	22	24	23	26	20	37	28	45	27	53	70	64
BORAX	161	26	35	19	15	63	91	88	128	314	174	43	24	30
BORAX	1251	1283	1370	1385	1361	1438	1345	1336	1316	1227	1399	1517	1310	1390
BORAX	1828	1651	1634	1438	1952	1625	1399	1731	1404	2809	2120	1211	1084	1261
BORON	349	256	256	231	328	280	244	297	313	569	548	305	253	274
BORON	98	183	197	297	308	358	283	256	45.46					
CAL CITY BLVD	801	479	418	317	331	163	342	134	1213	844	980	835	603	381

AVEK West Feeder: Deliveries 1976 through 2005

AVE CA. POPPY PRES	LOCATION
160 W	1.4R
140th W	1.4R
140th W	6.0L
140th W	6.0L
140th W	6.0R
140th W	6.6R
140th W	6.6R(So)
140th W	7.0L
140th W	7.5R
140th W	7.5R1
140th W	7.6L
140th W	9.0LA
140th W	9.0LB
140th W	9.0LD
125th W	10.5LA 1"
25th W (So)	10.5LA 10"
125th W (M)	10.5LA1 12"
25th W (No)	10.5LB 12"
120th W	10.8L
115th W	11.6R2
115th W	11.6R3
107th W	12.3R1
107th W	12.3R2
105th W	12.5L
100th W	13.0R
90th W	13.8R
90th W (NE)	13.9L
90th W (SE)	13.9L
80th W	14.9R1 (S)
72nd W	15.7L
65th W	16.5R
62nd W	16.7L
42nd W	20.2L
42nd W	20.2L1
35th W	21.7L
	DAYS

AVE CA. POPPY PRES	LOCATION
160 W (HEALY)	1.4R
140th W	1.4R
140th W	6.0L
140th W	6.0R
140th W	6.6R
140th W	6.6R(So)
140th W	7.0L
140th W	7.5R
140th W	7.5R1
140th W	7.6L
140th W	9.0LA
140th W	9.0LB (WEST)
140th W	9.0LB EAST (
140th W	9.0LB So(VAR
140th W	9.0LD
125th W	10.5LA 1"
25th W (So)	10.5LA 10"
125th W (M)	10.5LA1 12"
25th W (No)	10.5LB 12"
120th W	10.8L1 (N)
115th W	11.6R1
115th W	11.6R2
107th W	12.3R1

AVEK West Feeder Deliveries 1976 through 2005

107th W  
 105th W  
 100th W  
 90th W  
 90th W (NE)  
 90th W (SE)  
 APTA 80th W  
 80th W  
 72nd W  
 65th W  
 62nd W  
 42nd W  
 42nd W  
 35th W

12.3R2  
 12.5L  
 13.0R  
 13.6R  
 13.9L  
 13.9R  
 14.9R1 (S)  
 14.9R2 (N)  
 15.7L  
 16.5R  
 16.7L  
 20.2L  
 20.2L1 (BISC)  
 21.7L  
 DAYS

34th W & FELSITE  
 25th W & FELSITE  
 SIERRA HWY  
 MPS  
 FWY 14 (86500002)  
 ROSAMOND BLVD & HWY 58  
 NF2  
 CLAY MINE RD  
 BORAX RD  
 BORAX RD  
 BORAX RD  
 BORON PS (METER HEAD)  
 SOUTH OF BORON  
 CAL CITY BLVD

0

DAYS

34th W & FELSITE  
 25th W & FELSITE  
 SIERRA HWY  
 MPS  
 FWY 14 (86500002)  
 SILVER QUEEN RD  
 ROSAMOND BLVD & HWY 58  
 NF2  
 CLAY MINE RD  
 BORAX RD  
 BORAX RD  
 BORAX RD  
 BORON PS (METER HEAD)  
 SOUTH OF BORON  
 CAL CITY BLVD

0

DAYS

AVEK West Feeder Deliveries 1976 through 2005

LOCATION	1990	1989	1988	1987	1986	1985	1984	1983	1982	1981	1980	1979	1978	1977
160th W	7	6	5	7	12	2114	136	1029	1996	2965	2066	1597	1151	2580
140th W					785		405		536	534	410	408	196	
140th W									2231	3143	2250	2360	1947	414
140th W	1388	1294	1383	1814	896	1736	1855	1575	2374	2669	2512	2558	139	
140th W	2455	1617	1556	1831	1998	2547	1494	1300	1192	1390	1085	1088	839	169
140th W	1188	1156	872	889	1638	1573	1233	1083	2420	3176	2584	2468	1946	567
140th W					804	595	2358	1851	4613	4929	4819	4654	3795	1707
140th W	1706	2166	1900	1992	1267	2377	2440	2972	1418	2083	1472	1595	1506	490
140th W					50	600	651	994						
140th W	391	634	229	890	546	959	533							
125th W					10	339	381	748	1213	1468	1393	1435	1291	1188
125th W	11	11	12	12	209	413	318	595	596	660	620	328	328	
125th W					1			630	974	1193	962	1306	1328	192
125th W					1	662	689	1	1	835	354	859	45	1
115th W					634	584	806		1757	1838	1768	1136	646	606
115th W	899	767	595	657	276	505	478	1535	1316	1122	1084	701	1010	
107th W								1281		1481	1933	1698	1304	
105th W								684		1337		755		556
100th W	791	688	104	666	430	340	814	577	562	669	899	1045	136	
90th W	1073	1181	1117					834	490	625	596	306		
								565	764	1301	957			
80th W					583	719	476	432	350	533	84	25		
74th W	4	306	4	26	4	260	139	198	2294	2724	2439	2304	1679	
74th W	491	549	120	11				1658	539	667	655	473		
72th W	1608	1640	1937	1891	2144	1694		1039						
								1		522				
42th W	573	235	560	1	553	262	485	602	1009	1059	1107	1293	1053	19
35th W	35				287	457	496	403	694	680	732	48		
35th W	37	31	42	33	33	69	30	20	123	223	311	245	187	13
34th W & Felste	134	1	4	5	7	6	6	6	5	6	3	21		
25th W & Felste	329	158	79	15	7	44	70	58	6	6				
Sierra Hwy														
MPS	288	401	462	696	735	516	563	612	358	316	137	150		
FVY 14	84	72	88	73	6	7	2	2	2	7	2	3		
Silver Queen Rd		5	5	7	3	3	3							
Silver Queen														
Rosamond BLVD & HWY 58														
NFZ	6	6	6	6	6	6	6	6	6	6	1			
Clay Mine Rd	111	185	79	185	63	18	6	14	45	4				
BORAX	30	80	82	31	44	58	72	85	54	62				
BORAX	1630	1467	1246	664	24				1039	1415	935			
BORAX	865	662	735	678	605	651	1109	841	239	190	116			
BORON	264	358	262	253	364	368	268	283	1645	1887	990			
BORON														
CAL CITY BLVD	178	190	157	75	52	259	898	897						

AVEK West Feeder Deliveries 1976 through 2005

LOCATION	AVE CA, POPPY PRES
1.4R	160 W
1.4R	140th W
6.0L	140th W
6.0L	140th W
6.0R	140th W
6.6R	140th W
6.6R(So)	140th W
7.0L	140th W
7.5R	140th W
7.5R1	140th W
7.6L	140th W
9.0LA	140th W
9.0LB	140th W
9.0LD	140th W
10.5LA 1"	125th W
10.5LA 10"	25th W (So)
10.5LA1 12"	125th W (N)
10.5LB 12"	25th W (No)
10.8L	120th W
11.6R2	115th W
11.6R3	115th W
12.3R1	107th W
12.3R2	107th W
12.5L	105th W
13.0R	100th W
13.8R	90th W
13.9L	90th W (NE)
13.9L	90th W (SE)
14.9R1 (S)	80th W
15.7L	72nd W
16.5R	65th W
16.7L	62nd W
20.2L	42nd W
20.2L1	42nd W
21.7L	35th W
DAYS	

LOCATION	AVE CA, POPPY PRES
1.4R	160 W (HEALY)
1.4R	140th W
6.0L	140th W
6.0R	140th W
6.6R	140th W
6.6R(So)	140th W
7.0L	140th W
7.5R	140th W
7.5R1	140th W
7.6L	140th W
9.0LA	140th W
9.0LB (WEST)	140th W
9.0LB EAST (	140th W
9.0LB 50(VA)	140th W
9.0LD	140th W
10.5LA 1"	125th W
10.5LA 10"	25th W (So)
10.5LA1 12"	125th W (N)
10.5LB 12"	25th W (No)
10.8L1 (N)	120th W
11.6R1	115th W
11.6R2	115th W
12.3R1	107th W

AVEK West Feeder Deliveries 1976 through 2005

107th W  
105th W  
100th W  
100th W  
90th W  
90th W (NE)  
90th W (SE)  
APT# 80th W  
80th W  
72nd W  
65th W  
62nd W  
42nd W  
42nd W  
35th W

12.3R2  
12.5L  
13.0R  
13.8R  
13.9L  
13.9R  
14.9R1 (S)  
14.9R2 (H)  
15.7L  
16.5R  
16.7L  
20.2L  
21.7L  
DAYS

34th W & FELSITE  
25th W & FELSITE  
SIERRA HWY  
MP5  
FWY 14 (86500002)  
ROSAMOND BLVD & HWY 58  
NF2  
CLAY MINE RD  
BORAX RD  
BORAX RD  
BORAX RD  
BORAX RD  
BORON PS (METER HEAD)  
SOUTH OF BORON  
CAL CITY BLVD

0

DAYS

34th W & FELSITE  
25th W & FELSITE  
SIERRA HWY  
MP5  
FWY 14 (86500002)  
SILVER QUEEN RD  
ROSAMOND BLVD & HWY 58  
NF2  
CLAY MINE RD  
BORAX RD  
BORAX RD  
BORAX RD  
BORAX RD  
BORON PS (METER HEAD)  
SOUTH OF BORON  
CAL CITY BLVD

0

DAYS

AVEK West Feeder Deliveries 1976 through 2005

LOCATION	1976 TOTAL
160th W	5425
140th W	23708
140th W	4461
140th W	38567
140th W	38458
140th W	27084
140th W	34179
140th W	43740
140th W	20617
140th W	6495
140th W	15317
125th W	10922
125th W	10067
10-5LA1	7815
10-5LB	7815
10-8L	10042
11-6R1	10042
11-R2	18090
12-3R	19067
12-5L	19048.61
13-0R	9697
13-8R	8601
13-9L	8994
13-9R	4073
14-9R	8103
15-5L	2764
15-7L	29738
16-5R	7454
16-7L	2265
20-2L	12050
21-5L	3797
21-7L	103
21-7L	1775
21-7L	4
34th W & Felsite	12053
25th W & Felsite	1416
Sierra Hwy	3259
MPS	7852
FWY 14	950
Silver Queen	34
Silver Queen	27
Rosamond BLVD & HWY 58	22968.42
NF2	153
Clay Mine RD	1189
BORAX	1809
BORAX	23859
BORAX	32702
BORON	7468
BORON	2025.46
CAL CITY BLVD	15069

# ANEK Customer Water Use Report - 2012

11/27/2012

## WEST FEEDER 2012 AVEK METER READINGS

NAME	LOCATION	2005	2006	2007	2008	2009	2010	2011	2012 Tot	TOTAL
Martinez Farms	140th W 7.0L	0.0	18.7	0.0	5.0	2.0	4.0	2.5	1.5	42.7
AV Water Services LLC	140th W 8.9L							3,870.7	2,637.8	6,508.5
	140th W 9.0L	1,770.0	2,172.4	1,224.0	0.0	0.0	598.1	4,730.0	0.0	10,775.4
	140th W 9.0LC	0.0	0.0	0.0	0.0	0.0	0.0	2,600.0	1.0	2,601.0
	140th W 9.0LD	0.0	0.0	0.5	0.5	0.0	0.5	2,593.5	1.5	2,598.5
Goldenway Farms	125th W (Not to 51A 10'	504.9	805.0	624.7	603.0	290.5	144.0	745.2	676.0	4,900.3
	125th W (Not to 51A 12'	431.4	1,106.6	223.1	798.7	64.7	829.7	762.8	948.4	3,664.0
	125th W (Not to 51B 15'	100.0	511.4	1,067.4	1,00.7	135.1	51.8	610.0	684.4	4,924.3
Scott Harter	120th W 10.0L	1.5	14.4	505.1	0.5	0.0	0.0	0.0	0.0	612.0
									<b>TOTAL</b>	<b>38,951.8</b>

WDS000099



Parcel Group	Former Owner	Parcels	Total Applied Water Requirement (AF)												AVEK Surface Water Deliveries (AF)													
			2000	2001	2002	2003	2004	2005	2006	2007	2008	2009	2010	2011	2012	2000	2001	2002	2003	2004	2005	2006	2007	2008	2009	2010	2011	2012
1	Arcuri	83-87	309	309	309	309	309	309	309	309	309	309	309	309	309	309	309	309	309	309	309	309	309	309	309	309	309	309
2	Bejulan	67	581	581	571	571	571	571	571	571	571	571	571	571	571	571	571	571	571	571	571	571	571	571	571	571	571	571
3	eSolar	88-117	1,664	1,290	1,401	2,494	2,453	987	659	1,027	825	1,014	1,584	1	0	0	0	0	0	0	0	0	0	0	0	0	0	0
4	Grimmway	0-24, 28-41, 45	3,563	2,646	2,692	1,487	2,048	1,791	2,401	1,666	1,941	414	1,490	2,916	1,242	1,863	1,926	2,145	1,065	999	1,622	2,766	3,521	1,720	511	738	2,327	2,284
5	Harter	71-79	856	1,221	1,884	1,544	1,675	2,207	2,207	2,028	2,028	1,987	1,987	1,906	1,779	790	795	982	108	455	1.5	34.4	595.1	0.5	0	0	0.5	0
6	Robertson & Nikkel	25-27	0	0	0	0	0	0	0	0	0	0	0	0	0	0	0	0	0	0	0	0	0	0	0	0	0	0
7	Sandhu	56	272	272	272	272	272	272	272	272	272	164	272	272	272	0	0	0	0	0	0	0	0	0	0	0	0	0
8	Collins, Doyle, Wong	42-44	0	0	0	0	0	0	0	0	0	0	0	0	0	0	0	0	0	0	0	0	0	0	0	0	0	0
9	Bagnell, Faber	80-82	1	1	1	1	1	1	1	1	1	1	1	1	1	0	0	0	0	0	0	0	0	0	0	0	0	0
10	Dennis	121	247	494	247	247	0	494	494	494	0	0	0	0	0	0	0	0	0	0	0	0	0	0	0	0	0	0
11	Hemmerling	118,122,123,123A	1,339	1,584	797	792	0	547	547	1,089	542	542	542	0	0	0	0	0	0	0	0	0	0	0	0	0	0	0
12	O'Neil	124	275	275	275	275	0	275	275	275	275	275	275	275	275	0	0	0	0	0	0	0	0	0	0	0	0	0
13	Reca	119	559	559	559	559	0	559	559	559	559	559	559	559	559	0	0	0	0	0	0	0	0	0	0	0	0	0
14	Wilson	120	0	0	0	0	0	0	0	1,081	0	0	0	0	0	0	0	0	0	0	0	0	0	0	0	0	0	0
	<b>Total</b>		<b>9,767</b>	<b>9,333</b>	<b>9,007</b>	<b>8,550</b>	<b>7,329</b>	<b>7,704</b>	<b>7,987</b>	<b>9,065</b>	<b>7,015</b>	<b>5,527</b>	<b>7,282</b>	<b>5,930</b>	<b>4,129</b>	<b>2,653</b>	<b>2,721</b>	<b>3,127</b>	<b>1,173</b>	<b>1,454</b>	<b>1,624</b>	<b>2,800</b>	<b>4,116</b>	<b>1,721</b>	<b>511</b>	<b>738</b>	<b>2,327</b>	<b>2,284</b>

Grimmway

Well	2000	2001	2002	2003	2004	2005	2006	2007	2008	2009	2010	2011	2012
Estimated groundwater usage from SCE bills: DW195 (AF)	647	744	399										
Estimated groundwater usage from SCE bills: DW196 (AF)	?	?	296										
Estimated groundwater usage from SCE bills: DW 179(AF)	?	?	?										
Total estimated from SCE records (AF)	?	?	695										
Reported actual groundwater usage from flow meters (AF)	?	?	649	456	1,024	920	789	380	585	744	985	708	496
Compiled groundwater usage (AF)	?	?	649	456	1,024	920	789	380	585	744	985	708	496
AVEK deliveries to Grimmway lands (AF)	1,863	1,926	2,145	1,065	989	1,622	2,766	3,521	1,720	511	738	2,327	2,284
Total Applied Water (AF)	?	?	2,794	1,520	2,023								
Grimmway SW records	1,084	1,457	1,139	763	999	1,622	2,766	3,521	1,720	511	738	2,262	2,139
AVEK SW records	1,863	1,926	2,145	1,366	1,027	1,622	2,766	3,521	1,720	511	738	2,327	2,284

Notes:

Pumpage for 2000-2002 estimated from power usage using the AZDWR method defined at: <http://www.azwater.gov/dwr/drought/files/estimating%20water%20use%20final.pdf>  
 Pumpage for 2002-present from actual well head meter readings

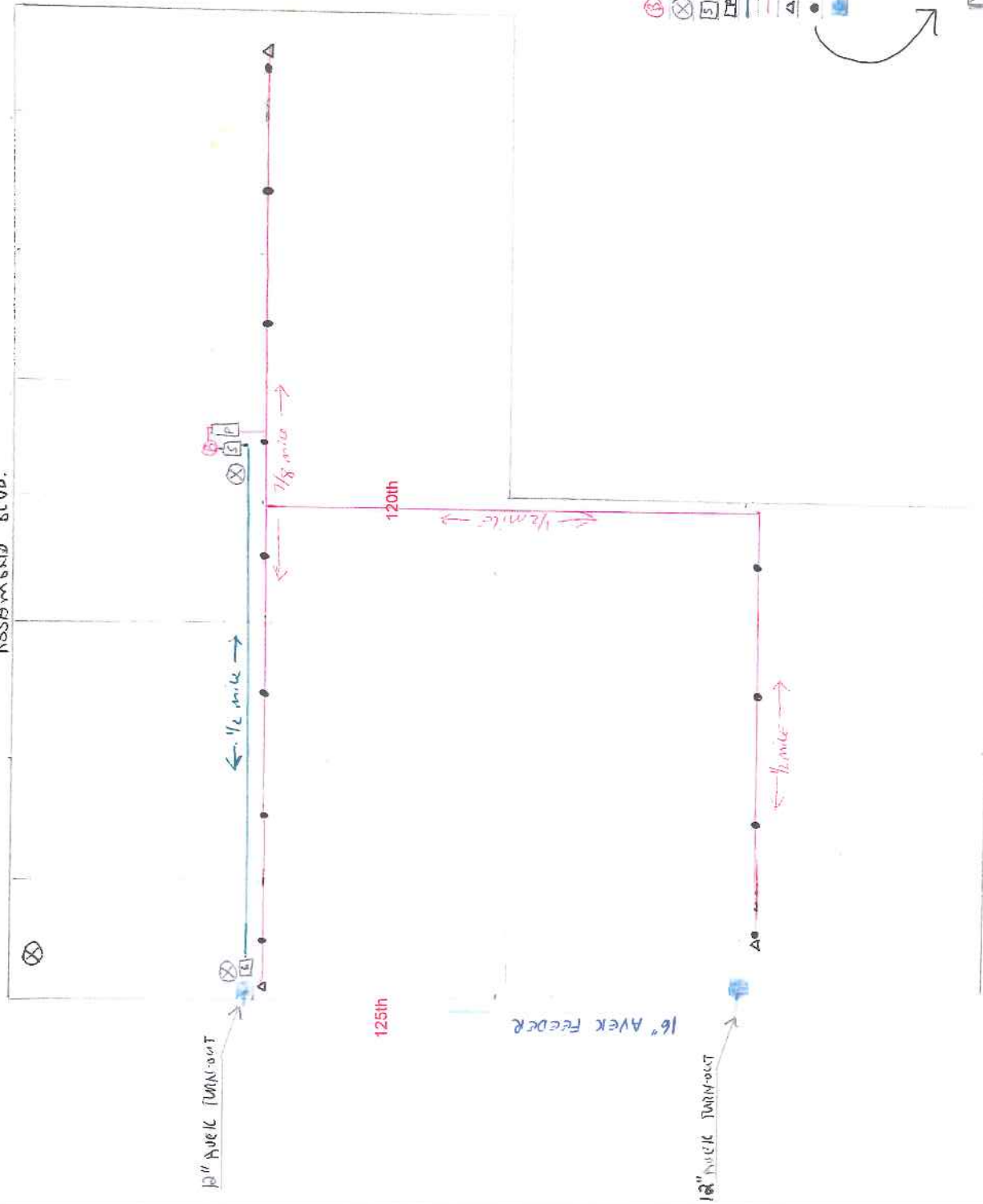
DW-195 and some portions of AVEK water have been used consistently by Grimmway to irrigate lands north of Rosamond Blvd. Those additional acreages were not included in the applied water analysis, resulting in a difference in reported groundwater pumpage history and crop history carefully with Grimmway and confirmed that the reported groundwater pumpage numbers are actual and correct.

Consolidated Pumpage Data and Estimates

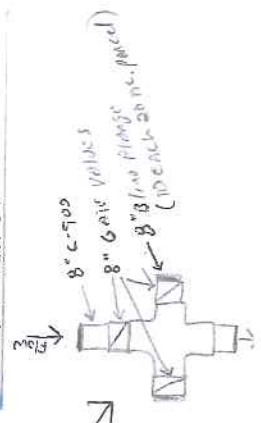
DW 179	526	0	268	345	344	151	422	122	235	159	259	236	181
DW 195	647	719	0	0	382	391	203	72	112	211	171	147	94
DW 196	527	0	381	110	297	378	163	186	239	374	555	325	221
Domestic	0.83	0.83	0.83	0.83	0.83	0.83	0.83	0.83	0.83	0.83	0.83	0.83	0.83
Total	1,700	720	650	456	1,025	921	790	381	586	745	986	709	496

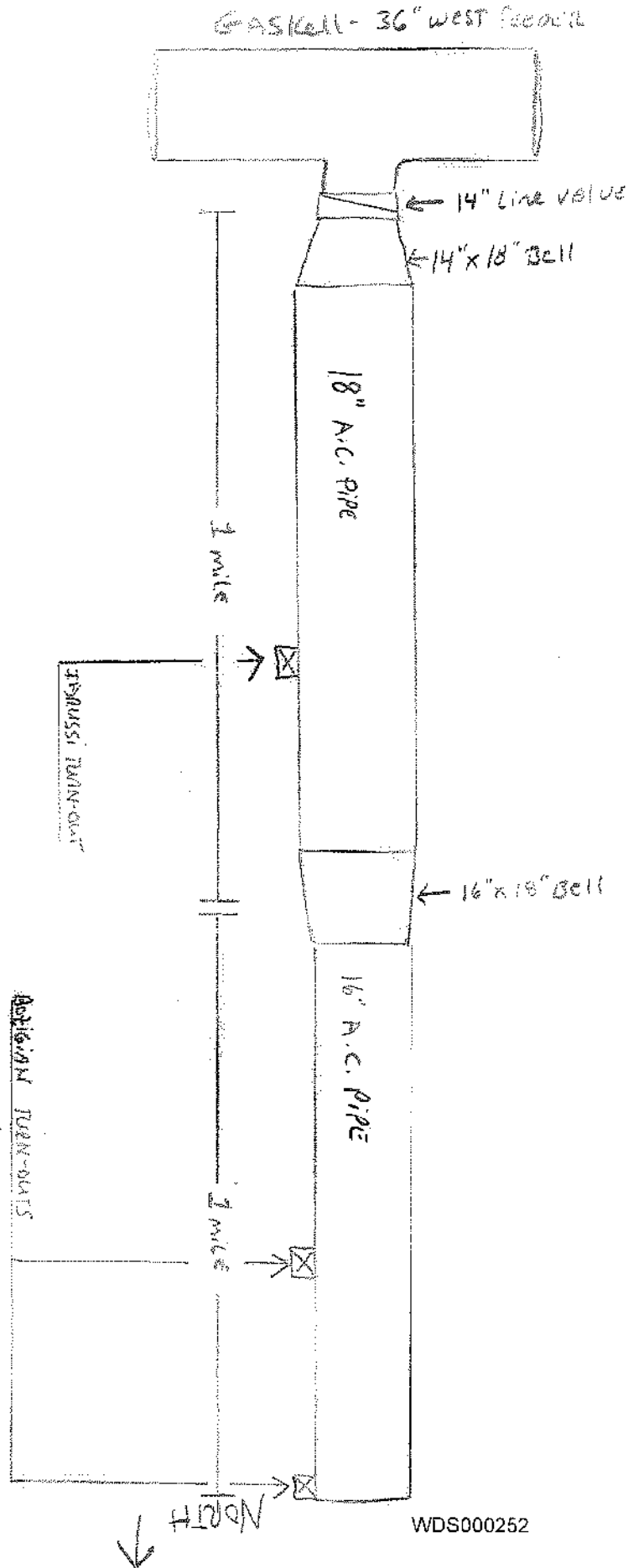
BOZIGIAN RANCH

ROSAMOND BLVD.



- ⊕ = Boost (Pressure) Pump
- ⊗ = Well
- ⊠ = STORAGE TANK
- ▭ = PRESSURE TANK
- = 6" C-700 TRANSMISSION PIPE
- = 8" C-700 PRESSURE MAIN
- △ = BYPASS
- = 8" BURETTE IN-ON STOP VALVE
- ⊞ = AVEK TURN-OUT





WDS000252

AVEK 10.5 Water Deliveries 1976-June 2011

	2011 (thru June 30th)	2010	2009	2008	2007	2006	2005	2004	2003	2002	2001	2000	1999	1998	1997	1996	1995
All in Acre-Feet	336	147	290	803	825	806	608	---	---	---	---	---	---	---	---	---	---
CRYSTAL /DIAMOND FARMING	125th W (S)	10.5LA	10"														
CRYSTAL /DIAMOND FARMING/BOZIGIAN	125th W (M)	10.5LA	12"														
GRIMMWAY/DIAMOND FARMING/BOZIGIAN	125th W (No)	10.5LB	12"														

AVEK 10.5 Water Deliveries 1976-June 2011

All in Acre-Feet	1994	1993	1992	1991	1990	1989	1988	1987	1986	1985	1984	1983	1982	1981	1980	1979	1978	1977	1976	Totals	
	125th W (So) 10.5LA 10"	0	0	0	0	0	0	1	1	209	413	318	595	596	660	620	328	---	---	---	3,042
CRYSTAL / DIAMOND FARMING																					
125th W (M) 10.5LA1 12"	0	0	0	0	0	0	1	1	398	662	689	630	974	1,193	962	1,306	1,328	192	---	14,286	
CRYSTAL / DIAMOND FARMING/BOZIGIAN																					
125th W (No) 10.5LB 12"	0	0	(90)	(896)	0	0	1	1													13,292
GRIMMWAY/DIAMOND FARMING/BOZIGIAN																					

2012 CROP WATER USAGE LANCASTER AREA																		
WATER SOURCE	FIELD NAME	FLD. AC.	WELL #	MONTH														
				2011 NOV	2011 DEC	JAN	FEB	MAR	APR	MAY	JUN	JUL	AUG	SEP	OCT	NOV	ACCU. ACFT / ACRE	
	ORGANICS																	
	ACFT from AVEK bills																	
BOZIGIAN / FRED'S / SILVERSHIELDS		112.50	AVEK (NORTH) 10.5 LB	0.128	48.664	82.160	25.940	154.500	93.390	78.900	138.030	41.540	23.250	2.870	9.280			688.652
BOZIGIAN		234.00	AVEK (MIDDLE) 10.5 LA-1	0.000	0.000	35.330	6.240	43.640	110.570	104.210	107.020	158.810	53.020	0.000	0.000			618.840
BOZIGIAN		114.00	AVEK (SOUTH) 10.5 LA	0.000	0.000	68.080	51.240	120.210	105.700	153.540	208.520	107.460	67.060	0.000	0.000			879.810
TOTAL		460.50		0.128	48.664	185.570	83.420	318.350	308.660	336.650	451.570	307.810	143.330	2.870	9.280	0.000		2197.302

2012 WATER USAGE/CALENDAR YEAR AVEK																		
WATER SOURCE	FIELD NAME	FLD. AC.	WELL #	MONTH														
				NOV	DEC	JAN	FEB	MAR	APR	MAY	JUN	JUL	AUG	SEP	OCT	NOV	ACCU. ACFT / ACRE	
	ORGANICS																	
	ACFT from AVEK 2012 Invoices																	
BOZIGIAN / FRED'S / SILVERSHIELDS		112.50	AVEK (NORTH) 10.5 LB			82.160	25.940	154.500	93.390	78.900	138.030	41.540	23.250	2.870	9.280			649.860
BOZIGIAN		234.00	AVEK (MIDDLE) 10.5 LA-1			35.330	6.240	43.640	110.570	104.210	107.020	158.810	53.020	0.000	0.000			818.840
BOZIGIAN		114.00	AVEK (SOUTH) 10.5 LA			68.080	51.240	120.210	105.700	153.540	208.520	107.460	67.060	0.000	0.000			879.810
TOTAL		460.50		0.000	0.000	185.570	83.420	318.350	308.660	336.650	451.570	307.810	143.330	2.870	9.280	0.000		2148.510

TOTAL AVAILABLE 2012	2148.510
TOTAL ACFT. USED	-2148.510
TOTAL ACFT. REMAINING	

2011 CROP WATER USAGE LANCASTER AREA																			
WATER SOURCE	FIELD NAME	FLD. AC.	WELL #	MONTH												ACCU. ACFT / ACRE			
				NOV	DEC	JAN	FEB	MAR	APR	MAY	JUN	JUL	AUG	SEP	OCT		NOV		
	ORGANICS																		
	ACFT from AVEK bills																		
BOZIGIAN		112.50	AVEK (NORTH) 10.5 LB	1.140	0.500	10.180	20.100	86.250	77.730	177.750	172.660	100.860	0.500	6.882					
BOZIGIAN		234.00	AVEK (MIDDLE) 10.5 LA-1	0.000	0.000	7.950	102.590	93.030	96.360	180.510	195.390	30.320	0.500	3.185					
BOZIGIAN		114.00	AVEK (SOUTH) 10.5 LA	0.920	0.000	44.460	123.130	170.480	147.090	121.720	17.000	37.680	0.000	747.390					
TOTAL		460.50		2.060	0.500	62.590	245.820	348.760	323.180	425.560	390.140	240.660	0.500	2264.560					

2011 WATER USAGE/CALENDAR YEAR AVEK																			
WATER SOURCE	FIELD NAME	FLD. AC.	WELL #	MONTH												ACCU. ACFT / ACRE			
				NOV	DEC	JAN	FEB	MAR	APR	MAY	JUN	JUL	AUG	SEP	OCT		NOV		
	ORGANICS																		
	ACFT from AVEK 2010 Invoices																		
BOZIGIAN		112.50	AVEK (NORTH) 10.5 LB			0.500	0.500	10.180	20.100	86.250	77.730	123.330	177.750	172.660	100.860	0.500	770.360	6.848	
BOZIGIAN		234.00	AVEK (MIDDLE) 10.5 LA-1			0.000	38.560	7.950	102.590	93.030	96.360	180.510	195.390	30.320	0.500	0.000	745.210	3.185	
BOZIGIAN		114.00	AVEK (SOUTH) 10.5 LA			0.000	38.320	44.460	123.130	170.480	147.090	121.720	17.000	37.680	46.550	0.000	746.430	6.56	
TOTAL		460.50		0.000	0.000	0.500	75.380	62.590	245.820	348.760	323.180	425.560	390.140	240.660	147.910	0.500	2262.000	4.912	

**TOTAL AVAILABLE 2011 2922.77**  
**TOTAL ACFT. USED 2262.000**  
**TOTAL ACFT. REMAINING 660.770**

Carryover 552.77 ACFT  
2011 Water Order 2400 ACFT



11/16/2012

2009 CROP WATER USAGE LANCASTER AREA																		
WATER SOURCE	FIELD NAME	FLD. AC.	WELL #	MONTH												ACCU. ACFT / ACRE		
				NOV	DEC	JAN	FEB	MAR	APR	MAY	JUN	JUL	AUG	SEP	OCT		NOV	
	ORGANICS																	
	ACFT from AVEK bills																	
BOZIGIAN		112.50	AVEK (NORTH) 10.5 LB	0.500	0.500	0.500	0.500	0.770	0.500	0.500	0.600	45.890	57.710				0.500	117.030
BOZIGIAN		234.00	AVEK (MIDDLE) 10.5 LA-1	0.500	0.500	0.500	0.500	0.000	23.730	77.790	60.120	46.910						214.820
BOZIGIAN		114.00	AVEK (SOUTH) 10.5 LA	5.320	0.000	0.000	0.500	0.000	0.500	0.500	0.000	0.000					5.320	12.140
TOTAL		460.50		6.320	1.000	0.500	1.000	12.430	24.730	78.790	106.010	106.620	0.000	0.000	0.000	0.000	6.820	343.980

2009 WATER USAGE CALENDAR YEAR AVEK																		
WATER SOURCE	FIELD NAME	FLD. AC.	WELL #	MONTH												ACCU. ACFT / ACRE		
				NOV	DEC	JAN	FEB	MAR	APR	MAY	JUN	JUL	AUG	SEP	OCT		NOV	
	ORGANICS																	
	ACFT from AVEK bills																	
BOZIGIAN		112.50	AVEK (NORTH) 10.5 LB	0.500	0.500	0.500	0.500	0.770	0.500	0.500	0.500	45.890	57.710					115.530
BOZIGIAN		234.00	AVEK (MIDDLE) 10.5 LA-1	0.000	0.500	0.500	0.500	0.000	23.730	77.790	60.120	46.910						213.820
BOZIGIAN		114.00	AVEK (SOUTH) 10.5 LA	0.000	0.000	0.000	0.500	0.000	0.500	0.500	0.000	0.000					1.500	0.01
TOTAL		460.50		0.000	0.000	0.500	1.000	12.430	24.730	78.790	106.010	106.620	0.000	0.000	0.000	0.000	0.000	330.950

TOTAL AVAILABLE 2009 290.21  
 TOTAL ACFT. USED 330.850  
 TOTAL ACFT. REMAINING -40.640

SILVERSHIELDS			BOZIGIAN YW (DWT196)	0.011	0.011	5.109	3.961	17.429	9.145	21.320	91.447	41.047	36.756					166.236
BOZIGIAN			WEST WELL (DWT196)	6.813	1.832	10.520	1.970	10.534	19.269	63.166	77.018	58.842	74.121					321.075
BOZIGIAN			EAST WELL (DWT179)	8.415	0.000	13.502	4.013	38.719	1.399	13.224	12.701	13.330	8.801					112.184
TOTAL				15.239	1.843	29.131	9.244	64.982	29.813	97.700	121.246	111.219	119.678	0.000	0.000	0.000	0.000	599.465

# AVEK Customer Water Use Report - 1976 thru 2009

## Water Deliveries - Location of AVEK Turnouts

LOCATION Year	CRYSTAL ORGANICS/GRIMMWAY FARMS/DIAMOND FARMING/BOZIGIAN			TOTAL: Usage (AF)	
	125th W (So) 10.5LA 10" Usage (AF)	125th W (M) 10.5LA1 12" Usage (AF)	125th W (No) 10.5LB 12" Usage (AF)		
2009	214	2	116	331	* Current 2009 Deliveries through July
2008	803	797	120	1,720	
2007	825	829	1,867	3,521	
2006	806	1,107	853	2,766	
2005	609	631	382	1,622	
2004	628	995	4	1,627	
2003	603	759	4	1,366	
2002	1,006	1,108	31	2,145	
2001	469	1,090	367	1,926	
2000	779	1,081	2	1,863	
1999	598	593	39	1,229	
1998	562	308	357	1,227	
1997	415	274	512	1,202	
1996	670	883	519	2,072	
1995	57	90	882	1,029	
1994	9	0	0	9	
1993	7	0	0	7	
1992	2	0	(90)	(89)	
1991	0	0	(896)	(896)	
1990	11	0	0	11	
1989	11	0	0	11	
1988	12	1	1	13	
1987	12	1	1	14	
1986	10	209	398	617	
1985	339	413	662	1,414	
1984	381	318	689	1,388	
1983	748	595	630	1,973	
1982	1,213	596	974	2,783	
1981	1,468	660	1,193	3,321	
1980	1,393	620	962	2,976	
1979	1,435	328	1,306	3,069	
1978	1,291	0	1,328	2,619	
1977	1,188	0	192	1,380	
1976	0	0	0	0	
<b>TOTAL</b>	<b>18,571</b>	<b>14,288</b>	<b>13,407</b>	<b>46,266</b>	

**From:** [Carl Voss](#)  
**To:** "[davedorrance@westerndev.com](mailto:davedorrance@westerndev.com)"  
**Cc:** "[Andrew Werner \(Westerndev\)](#)"  
**Subject:** RE: Bozigian water use in October or November?  
**Date:** Friday, November 16, 2012 1:48:09 PM  
**Attachments:** [Bozigian Water Usage 2010-November 1 2012.pdf](#)

---

Dave:

November is not over yet so we have no numbers yet. Just another note – in reviewing the AVEK usage with our manager, the water coming out of 10.5LB has been used a little bit on the WDS property with the bulk of it being used at the Silvershields (North of WDS) and the Fred's Ranch (East of WDS).

Thanks

Carl F. Voss Jr.  
Grimmway Enterprises, Inc.  
P.O. Box 81498  
Bakersfield, CA 93380-1498  
661-845-5271 (Office)  
661-845-5248 (Fax)  
661-809-5501 (Cell)  
[cvoss@grimmway.com](mailto:cvoss@grimmway.com)

---

**From:** Dave Dorrance [<mailto:ddorrance@comcast.net>]  
**Sent:** Friday, November 16, 2012 9:27 AM  
**To:** Carl Voss  
**Cc:** Andrew Werner (Westerndev)  
**Subject:** Bozigian water use in October or November?

Carl – thanks to your help I am wrapping things up on the water claim. I have your water use records through the end of September this year. Do you have any further groundwater or AVEK usage in October and November?

Thanks

Dave Dorrance  
832-212-4589  
[davedorrance@westerndev.com](mailto:davedorrance@westerndev.com)

**From:** [Andrew Werner](#)  
**To:** [davedorrance@westerndev.com](mailto:davedorrance@westerndev.com)  
**Subject:** Re: WDS II water use update  
**Date:** Monday, October 29, 2012 4:56:38 PM  
**Attachments:** [RosamondRanchCrops\\_2009.xls](#)  
[Untitled\\_attachment\\_00345.htm](#)  
[Bozoiain\\_2010\\_Planted\\_Acres.xls](#)  
[Untitled\\_attachment\\_00348.htm](#)  
[Bozoiain\\_2011\\_Planted\\_Acres.xls](#)  
[Untitled\\_attachment\\_00351.htm](#)  
[Bozoiain\\_Proposed\\_2012\\_Planted\\_Acres.xls](#)  
[Untitled\\_attachment\\_00354.htm](#)

---

Dave,

I have made the request to Carl Voss for the items below. I had the crop maps for Grimmway from 2009-2012 in my files, which I've attached.

Thanks,

Andrew

Andrew Werner  
Western Development & Storage  
5700 Wilshire Blvd., Suite 330  
Los Angeles CA 90036  
323.244.8756 Mobile  
323.648.4807 Direct  
323.936.9303 Office  
323.930.9114 Fax  
[andrewwerner@westerndev.com](mailto:andrewwerner@westerndev.com)

On Oct 27, 2012, at 7:19 AM, Dave Dorrance wrote:

Harter: need his power bills since June 2012

Grimmway: I need the well flow meter readings and the AVEK deliveries for 2010, 2011 and 2012 and the crop maps for 2005-2012

eSolar: I need Grimmway's well flow meter readings for 2005 onward (till they left) and the SCE meter readings for January 2005 onward.

Dave Dorrance  
832-212-4589  
[davedorrance@westerndev.com](mailto:davedorrance@westerndev.com)



	Summary										
Well	2000	2001	2002	2003	2004	2005	2006	2007	2008	2009	2010
Estimated groundwater usage from SCE bills: DW195 (AF)	647	744	399								
Estimated groundwater usage from SCE bills: DW196 (AF)	?	?	296								
Estimated groundwater usage from SCE bills: DW 179(AF)	?	?	?								
Total estimated from SCE records(AF)	?	?	695								
Reported actual groundwater usage from meters (AF)	?	?	649	456	1,024	920	789	380	585	744	985
<b>Compiled groundwater usage (AF)</b>	?	?	<b>649</b>	<b>456</b>	<b>1,024</b>	<b>920</b>	<b>789</b>	<b>380</b>	<b>585</b>	<b>744</b>	<b>985</b>
Grimmway Records: AVEK deliveries to Grimmway lands (AF)	1,084	1,457	1,139	763	999	1,622	2,766	3,521	1,720	511	1,057
AVEK Records: AVEK deliveries to Grimmway lands (AF)	1,863	1,926	2,145	1,366	1,627	1,622	2,766	3,521	1,720	744	985
<b>Total Applied Water (AF)</b>	?	?	<b>2,794</b>	<b>1,520</b>	<b>2,024</b>	<b>2,542</b>	<b>3,555</b>	<b>3,901</b>	<b>2,305</b>	<b>744</b>	<b>985</b>

**Notes:**

Pumpage estimated from power usage using the AZDWR method defined at: <http://www.azwater.gov/dwr/drought/drought/files/estimating%20water%20use%20final.pdf>



APN's 359-175-01; 359-175-02; 359-175-03;  
359-175-04; 359-321-01; 359-321-02; 359-  
324-18; 359-324-20

**From:** [Andrew Werner](#)  
**To:** [Dave Dorrance](#)  
**Subject:** AVEK Turnouts  
**Date:** Tuesday, October 02, 2012 12:42:19 PM

---

Dave,

Tom Barnes said that Maritorena's only turnout is 7.6L. He said Harter's is 10.8L. Does that make sense considering the historic flows?

Andrew

Andrew Werner  
Western Development & Storage  
5700 Wilshire Blvd., Suite 330  
Los Angeles CA 90036  
323.244.8756 Mobile  
323.648.4807 Direct  
323.936.9303 Office  
323.930.9114 Fax  
[andrewwerner@westerndev.com](mailto:andrewwerner@westerndev.com)



AVEK West Feeder Deliveries 1976 through 2005

AVE CA. POPPY PRES	LOCATION	JAN N, E	FEB	MAR	APR	MAY	JUN	JUL	AUG	SEPT	OCT	NOV	DEC	TOTAL
1.4R	1.4R	0	0	0	0	0.5	0	0	0	0	0.8	0.5	0	0.5
160 W	160 W	0	0	0	0	0	0	0	0	0	0	0	0	0
140th W	140th W	0	0	0	0	0	0	0	0	0	0	0	0	0
6.0L	6.0L	0	0	0	0	0	0	0	0	0	0	0	0	0
140th W	140th W	0	0	0	0	0	0	0	0	0	0	0	0	0
6.0R	6.0R	0	0	0	0	0	0	0	0	0	0	0	0	0
140th W	140th W	0	0	0	0	93.27	107.19	200.16	110.87	57.19	0	0	0	724.27
6.6R	6.6R	0	0	0	0	109.31	142.99	284.33	165.09	98.78	0	0	0	931.63
140th W	6.6R(So)	2.39	0	61	61	109.31	142.99	284.33	165.09	98.78	0	0	0	931.63
140th W	7.0L	0	0	0	0	0	0	0	0	0	0	0	0	0
140th W	7.5R	0	0	0	0	0	0	0	0	0	0	0	0	0
140th W	7.5R1	0	0	0	0	61.47	59.12	86.3	77.19	16.02	0	0	0	325.1
140th W	7.6L	0	0	0	0	0	0	0	0	0	0	0	0	0
140th W	9.0LA	0	0	0	0	0	0	0	0	0	0	0	0	0
140th W	9.0LB	0	0	0	0	0	0	0	0	0	0	0	0	0
140th W	9.0LB	0	0	0	0	72.39	85.71	162.37	118.5	56.8	0	45.6	93.35	790.61
140th W	9.0LD	0	0	0	0	0	0	0	0	0	0	0	0	0
140th W	10.5LA 1 <sup>0</sup>	0	0	0	0	0	0	0	0	0	0	0	0	0
125th W (So)	10.5LA 1 <sup>0</sup>	0	0	0	0	0.5	0.96	0.55	0.5	0.55	0.5	0.5	0.5	5.06
125th W (So)	10.5LA 10 <sup>0</sup>	29.1	7.56	35.97	0	5.24	39.21	122.46	124.47	93.24	0	39.88	2.36	622.54
125th W (M)	10.5LA 12 <sup>0</sup>	23.42	14.02	75.6	0	48.02	102.09	152.61	174.19	147.33	0	68.22	0	995.34
25th W (No)	10.5LB 12 <sup>0</sup>	0	0	0	0	0.5	0.5	0.5	0.5	0.5	0.5	0.5	0.5	4
120th W	10.8L	0	0	45	0	64.66	97.15	84.43	22.19	0	0	0	0	454.89
115th W	11.6R2	0	0	0	0	0	0	0	0	0	0	0	0	0
115th W	11.6R3	51.8	36.94	71.05	0	139.55	151.69	117.91	6.39	0.5	0	0	0	625.88
107th W	12.3R1	0	0	0	0	0	49.99	4.07	0	0	0	0	0	70.12
107th W	12.3R2	0	0	0	0	0	0	0	0	0	0	0	0	0
107th W	12.3R3	0	0	0	0	0	0	0	0	0	0	0	0	0
105th W	12.5L	0	0	0	0	0	42.85	23.06	58.34	0.5	0	0	0	124.75
100th W	13.0R	0	0	0	0	0	81.6	9.88	0	7.73	0.5	0	0	99.71
90th W	13.8R	0	0	0	0	0	0	0	0	0	0	0	0	0
90th W	13.9L	0	0	0	0	0	0	0	0	0	0	0	0	0
90th W (NE)	13.9L	0	0	0	0	0	0	0	0	0	0	0	0	0
90th W (SE)	14.9R1	0	0	0	0	0	0	0	0	0	0	0	0	0
72nd W	15.7L	0	0	0	0	0	24.85	46.42	123.31	110.48	23.48	0	0.91	329.45
65th W	16.5R	0	0	0	0	0	0	0	0	0	0	0	0	0
62nd W	16.7L	0	0	0	0	0	0	0	0	0	0	0	0	0
42nd W	20.2L	0	0	0	0	0	0	0	0	0	0	0	0	0
42nd W	20.2L1	0	0	0	0	0	0	0	0	0	0	0	0	0
21.7L	21.7L	0.5	0.5	0.5	0.5	0.86	3.28	3.13	4.1	2.9	0.5	2.39	0.5	23.51
DAYS	DAYS	34	28	28	28	28	35	28	35	28	28	35	28	31
		104.82	83.02	294.32	506.77	950.19	1059.59	1445.01	922.75	499.04	157.59	98.12	7.94	6129.16

AVE CA. POPPY PRES	LOCATION	JAN N, E	FEB	MAR	APR	MAY	WEST JUN	WEST JUL	WEST AUG	WEST SEPT	WEST OCT	WEST NOV	WEST DEC	TOTAL
1.4R	1.4R	0	0	0	0	0.5	0	0	0	0	0	0	0	0.5
160 W	160 W	44.8	13.81	168.5	187.58	337.88	320.56	457.97	320.35	286.11	286.11	165.14	22.25	2332.96
140th W	6.0L	129.64	5.92	2.07	2.07	291.18	298.59	341.66	344.22	269.51	269.51	107.67	44.27	1975.42
140th W	6.0R	0	0	0	0	95.31	99.44	196.33	52.26	3.59	3.59	0	0	542.33
140th W	6.5R	0	0	0	0	11.84	209.72	289.49	192.37	159.25	159.25	125.95	0	1561.71
140th W	6.6R(So)	0	0	0	0	48.74	32.7	214.41	73.37	0	0	0	0	596.45
140th W	7.0L	28.12	0	0	0	114.82	132.1	102.7	90.86	118.58	118.58	1.67	70.16	908.46
140th W	7.5R	0	0	0	0	49.15	179.1	242.33	198.91	178.75	178.75	104.68	0	1338.12
140th W	7.5R1	85.71	22.62	128.12	276.12	266.35	243.81	323.1	227.05	206.15	206.15	115.86	33.97	1963.97
140th W	9.0LA	4.99	0	0	0	0	0	0	0	0	0	0	0	4.99
140th W	9.0LB (WEST)	0	0	0	0	170.2	104	256.22	195	185.2	185.2	61.92	8.44	1159.13
140th W	9.0LB EAST C	28.05	85.39	94.37	173.16	156.45	243.59	309	137.63	145.04	145.04	68.77	8.44	1419.89
140th W	9.0LB So(VAR)	0	0	0	0	0	0	0	0	0	0	0	0	0
140th W	9.0LD	0	0	0	0	0	0	0	0	0	0	0	0	0
140th W	10.5LA 1 <sup>0</sup>	0.5	0.5	0.5	0.5	0.62	0.57	1.13	0.5	0.5	0.5	0.5	0.5	0.5
125th W (So)	10.5LA 10 <sup>0</sup>	5.95	0.5	0	0	24.79	62.1	202.67	168.21	117.37	117.37	34.2	3.97	771.8
125th W (M)	10.5LA 12 <sup>0</sup>	6.05	15.3	15.3	77.45	131.87	145.93	223.86	184.76	122.88	122.88	78.95	42.64	1061.26
25th W (No)	10.5LB 12 <sup>0</sup>	0.5	0.5	0.5	0.5	212.39	96.65	113.37	81.84	100	100	75.13	7.14	789.8
10.8L1 (N)	10.8L1 (N)	0	0	0	0	0	0	0	0	0	0	0	0	0
11.6R1	11.6R1	0	0	0	0	9.07	98.65	209.6	165.15	100.92	100.92	31.37	54.33	708.39
11.6R2	11.6R2	0.5	0.5	0.5	0.5	37.8	0	0	0	0	0	0	0	0
12.3R1	12.3R1	0	0	21.41	73.66	66.64	70.51	104.21	83.94	89.53	89.53	68.78	0	591.55

AVEK West Feeder Deliveries 1976 through 2005

	2004												TOTAL	
	JAN	FEB	MAR	APR	MAY	JUN	JUL	AUG	SEPT	OCT	NOV	DEC		
107th W	12.3R2	0	0	0	2.01	42.25	87.59	249.19	190.5	83.7	0	0	0	655.24
105th W	12.5L	78.5	140.99	196.61	353.5	407.69	344.93	419.35	325.05	313.85	205.87	0	0	2787.14
100th W	13.0R	0	0	67.1	95.55	96.64	120.16	153.89	173.66	142.24	123.04	0	7.34	979.62
90th W	13.8R	0	0	0	0	29.14	24.15	57.56	50.72	27.95	0	0	0	189.52
90th W (NE)	13.9L	0	0	0	105.59	170.85	148.38	337.78	142.9	51.15	160.6	0	0	1097.23
90th W (SE)	13.9R	0	0	0	6.73	104.93	87.38	109.4	71.41	0	0	0	33.99	435.76
APTA 80th W	14.9R1 (S)	0	0	0	0	21.74	19.74	40.38	35.34	0	0.5	0	0	117.7
80th W	14.9R2 (N)	0	0	0	17.78	6.7	9.28	18.47	21.24	17.49	4.86	0	0	100.63
72nd W	15.7L	0	0	0	147.85	89.5	203.07	328.79	112.93	46.27	32.16	0	0	960.57
65th W	16.5R	16.73	0	0	25.25	31.19	192.65	159.56	174.61	107.46	18.3	0	0	725.75
62nd W	16.7L	0	0	0	0	0	0	0	0	0	0	0	0	0
20.2L	20.2L	0	0	0	0	0	0	0	0	0	0	0	0	0
42nd W	20.2L1 (BISC)	6.75	67.85	21.79	49.38	94.61	144.06	86.26	0	0	0	0	0	470.7
42nd W	21.7L	0.57	0.5	0.58	2.3	2.69	4.59	5.49	3.61	3.05	2.32	0.5	0.5	26.7
35th W	DAYS	33	29	28	35	28	28	35	28	28	35	32	367	3299.96
		437.36	354.38	913.37	2920.32	3301.48	3960.32	5556.17	3799.19	2846.54	1588.24	297.11	329.48	26303.96
		0	0	0	0	0	0	0	0	0	0	0	0	0

	2000												TOTAL	
	JAN	FEB	MAR	APR	MAY	JUN	JUL	AUG	SEPT	OCT	NOV	DEC		
34th W & FELSITE	12.3R2	0	0	0	0	0	0	0	0	0	0	0	0	0
25th W & FELSITE	12.5L	39.13	5.86	2.74	75.71	110.86	176.93	210.36	252.87	196.44	161.29	56.18	37.38	1325.75
SIERRA HWY	13.0R	0	0	0	0	0	0	0	0	0	0	0	0	0
MPS	13.8R	13.97	11.34	14.63	29.58	29.64	36.22	46.56	34.55	29.47	27.96	14.57	16.3	304.79
FWY 14 (B650002)	13.9L	1.84	0.31	0.18	4.03	8.17	11.91	24.61	31.8	12.91	10.97	1.17	0.95	119.38
SALVER, QUIFEM RD	13.9R	0.5	0.54	0.69	1.19	0.72	1.05	0.92	1.06	0.58	0.5	0.78	1.02	9.55
ROSAMOND BLVD & HWY 58	14.9R1 (S)	0	0	0	0	0	0	0	0	0	0	0	0	0
RFZ	14.9R2 (N)	142.67	137.16	208.97	283.87	243.8	304.97	382.39	280.22	264.12	212.29	159.73	103.64	2724.03
CLAY MINE RD	15.7L	0.5	0.5	0.5	0.5	0.5	0.5	0.5	0.5	0.5	0.5	0.5	0.5	6
BORAX RD	16.5R	1.59	0.5	2.27	0.5	7.75	4.93	4.93	0.5	1.61	0.66	1.11	1.74	22.55
BORAX RD	16.7L	0.5	0.5	0.5	0.62	0.75	1.92	2.66	2.17	1.61	2.12	1.02	0.75	15.12
BORAX RD	20.2L	72.77	62.2	90.96	147.11	124.03	142.68	209	161.67	141.3	108.05	58.21	43.03	1361.21
BORAX RD	20.2L1 (BISC)	184.34	158.36	169.91	200.19	172.1	144.81	173.8	155.37	134.3	161.11	146.81	151.17	1952.27
BORON PS (METER HEAD)	16.5R	8.26	1.47	3.8	21.04	33.81	41.92	60.31	47.38	34.64	35.57	18.33	21.71	328.44
SOUTH OF BORON	15.1	15.1	18.95	21.51	27.49	21.73	31.61	37.14	28.07	31.11	31.68	22.07	21.59	308.05
CAL CITY BLVD	DAYS	3.02	2.82	3.14	2.82	19.7	71.4	83.99	66.38	70	3.5	4.16	0.5	331.43
		0	0	0	0	0	0	0	0	0	0	0	0	0
		33	29	28	35	28	28	35	28	28	35	28	32	366
		484.19	400.51	519.8	794.65	766.31	973.67	1237.17	1062.74	917.68	756.2	495.17	400.48	8809.57

AVEK West Feeder Deliveries 1976 through 2005

LOCATION	2004	2003	2002	2001	2000	1999	1998	1997	1996	1995	1994	1993	1992	1991
160th W				2001	2000	1999	1998	1997	1996	1995	1994	1993	1992	1991
140th W	2	6	6	1596	2334	1117	4	298	3				16	6
6.0L			1183	1567	1975	1564		376	366					
6.0R					542	285	383							
140th W	1556	492	717	1527	2158	1556	1082	1459	1322	594	606	826	286	
6.6R				543	908	1016	963	1649	1749	2017	2235	1490	838	
140th W	325	27	779	547	1338	1602	858	1244	1050	919	1357	1194	479	
7.5R			2	783	1964	2127	1346	1801	1907	864	1112			
7.6L					5	461	315	579	518	525				
140th W	791	470	179	2274	2579	1634	2414	594	508	333			-448	-1799
9.0LB						1117	231	458	392	344				
140th W	628	603	1006	469	779	598	562	415	670	57	9	7	2	
10.5LA	995	759	1108	1090	1081	593	308	274	883	90				
12.5th W	4	4	31	367	2	39	357	512	519	882			-90	-896
10.5LB	455	108	982	795	790	804	669	855	221					
10.8L														
11.6R1														
11.8R2	626	867	842	829	708	635	208	805	182	447	204	234	117	
12.3R	70	906	550	972	1247	706	813	1635	950	851	826	482	46	
10.5th W				326	2787	2982	1799	2815	2924	2119	2139	1157.61		
13.0R	125	107	77	491	980	560	318	564	377	460	668	162		
100th W	100	378	119	124	190	111	125	258	199	405	262	269	253	
13.6R			3	853	1097	973	603	662	164					
13.9L				397	436	293	293	310	52	4	1	4	285	
13.9R		142	194	244	219	561	402	475						
14.9R														
15.5L				722	961	1081	1	2213	917	509	509	845		-2161
15.7L	329	1	284	403	726	834	721	643	140					
16.5R		17	158	449			457	462	641					-1074
16.7L		489		676	471	178	543	639	161	82				
20.2L														
21.5L														
21.7L	24	23	25	27	27	28	28	34	38	31	27	31	27	68
34th W & Felisite	819	947	607	672	1326	1216	764	530	480	1193	1074	1050	771	434
25th W & Felisite	292	283	312	307	305	296	251	278	173	187	116	127	41	33
Sierra Hwy	41	93	214	173	119	217	70	48	166	118	290	117	86	
MPS	14	17	10	13	10	22	92	103	43	67	55	67	433	468
FWY 14														80
Silver Queen Rd														
Silver Queen	1887	2806	2155	2226	2724	1782	1737	1357	1675	1171	2103	1345.42		
Rosamond Blvd & Hwy 58	6	6	6	7	6	6	6	8	7	9	7	6	6	6
NF3	18	22	22	24	23	26	20	37	28	45	27	53	70	64
Clay Mine Rd	161	26	35	19	15	63	91	88	128	314	174	43	24	30
BORAX	1251	1283	1370	1385	1361	1438	1345	1336	1316	1227	1399	1517	1310	1390
BORAX	1828	1651	1634	1438	1952	1625	1399	1731	1404	2809	2120	1211	1084	1261
BORON	349	256	256	231	328	280	244	297	313	569	548	305	253	274
BORON	98	183	197	297	308	358	263	256	45.46					
CAL CITY BLVD	801	479	418	317	331	163	342	134	1213	844	980	835	603	381

AVE CA, POPPY PRES	LOCATION
100 W	1.4R
140th W	1.4R
140th W	6.0L
140th W	6.0L
140th W	6.0R
140th W	6.6R
140th W	6.6R(So)
140th W	7.0L
140th W	7.5R
140th W	7.5R1
140th W	7.6L
140th W	9.0LA
140th W	9.0LB
140th W	9.0LD
125th W	10.5LA 1"
25th W (So)	10.5LA 10"
125th W (M)	10.5LA1 12"
25th W (No)	10.5LB 12"
120th W	10.8L
115th W	11.6R2
115th W	11.6R3
107th W	12.3R1
107th W	12.3R2
105th W	12.5L
100th W	13.0R
90th W	13.8R
90th W (NE)	13.9L
90th W (SE)	13.9L
80th W	14.9R1 (S)
72nd W	15.7L
65th W	16.5R
62nd W	16.7L
42nd W	20.2L
42nd W	20.2L1
35th W	21.7L
	DAYS

AVE CA, POPPY PRES	LOCATION
150 W (HEALY)	1.4R
140th W	1.4R
140th W	6.0L
140th W	6.0R
140th W	6.6R
140th W	6.6R(So)
140th W	7.0L
140th W	7.5R
140th W	7.5R1
140th W	7.6L
140th W	9.0LA
140th W	9.0LB (WEST)
140th W	9.0LB EAST (
140th W	9.0LB So(VAN
140th W	9.0LD
125th W	10.5LA 1"
25th W (So)	10.5LA 10"
125th W (M)	10.5LA1 12"
25th W (No)	10.5LB 12"
115th W	10.8L1 (R)
115th W	11.6R1
107th W	11.6R2
107th W	12.3R1

AVEK West Feeder Deliveries 1976 through 2005

107th W  
105th W  
100th W  
90th W  
90th W (NE)  
90th W (SE)  
AHTA 80th W  
80th W  
72nd W  
65th W  
62nd W  
42nd W  
42nd W  
35th W

12.3RZ  
12.5L  
13.0R  
13.6R  
13.9L  
13.9R  
14.9R1 (S)  
14.9R2 (N)  
15.7L  
16.5R  
16.7L  
20.2L  
20.2L1 (BISC)  
21.7L  
DAYS

34th W & FELSITE  
25th W & FELSITE  
SIERRA HWY  
MPS  
FWY 14 (86500002)  
ROSAMOND BLVD & HWY 58  
INF2  
CLAY MINE RD  
BORAX RD  
BORAX RD  
BORAX RD  
BORON PS (METER HEAD)  
SOUTH OF BORON  
CAL CITY BLVD  
DAYS

0

34th W & FELSITE  
25th W & FELSITE  
SIERRA HWY  
MPS  
FWY 14 (86500002)  
SILVER QUEEN RD  
ROSAMOND BLVD & HWY 58  
INF2  
CLAY MINE RD  
BORAX RD  
BORAX RD  
BORAX RD  
BORON PS (METER HEAD)  
SOUTH OF BORON  
CAL CITY BLVD  
DAYS

0

AVEK West Feeder Deliveries 1976 through 2005

LOCATION	1990	1989	1988	1987	1986	1985	1984	1983	1982	1981	1980	1979	1978	1977
140th W	7	6	5	7	12	2114	136	1029	1996	2965	2066	1597	1151	2580
140th W					785		405		536	534	410	408	196	
6.0L									2231	3143	2260	2360	1947	444
6.0R									1575	2669	2512	2558	139	
140th W	1388	1294	1383	1814	896	1736	1855	1300	2374	1390	1085	1058	839	169
140th W	2455	1617	1556	1831	1998	2547	1494	1083	1192	1376	1058	1058	1946	567
140th W	1188	1156	872	889	1638	1573	1233	1851	2420	3176	2468	4654	3795	1707
7.5R		676	975	804	595	1863	2358	2972	4613	4929	4819	4654	1506	490
140th W	1706	2166	1900	1992	1267	2377	2440	994	1418	2083	1472	1595		
9.0LA			229		50	600	651							
9.0LB					546	959	533							
140th W	391	634	12	890	10	339	381	748	1213	1468	1393	1435	1291	1188
140th W	11	11		12	20	359	318	595	596	660	620	328	1328	192
125th W			1	1	209	413	318	630	974	1193	962	1306	45	1
125th W			1	1	398	662	689	1	1	835	354	859	646	606
10.5LB														
10.8L														
11.0R1		637	641	634	584	746	806	1535	1757	1838	1768	1136	1010	
11.0R2	899	767	595	657	276	505	478	1281	1316	1122	1084	701	1304	
12.3R														
12.5L														
13.0R	791	688	104		430	340	814	684	577	1337	755			356
13.8R	1073	1181	1117	666				834	562	669	899	1045	136	
13.9L								565	490	625	596	306		
13.9R								432	764	1301	957			
14.9R	4	306	4	26	563	719	476	198	350	533	84	25		
74th W	491	549	120	11	4	260	139	1658	2294	2724	2439	2304	1679	
15.5L	1608	1640	1937	1891	2144	1894		1039	539	667	655	473		
15.7L								1	1	522				
16.5R								602	1009	1059	1107	1293	1053	19
16.7L								403	694	680	732	48		
20.2L	573	235	560	1	553	262	485							
20.2L					287	457	496							
21.5L														
21.7L	35	31	42	33	33	69	30	20	123	223	311	245	187	13
	37		4											
34th W & Feisite	134	1		5	7	6	6	6	5	6	3	21		
25th W & Feisite	329	158	79	15	7	44	70	58	6					
Sierra Hwy														
MPS	288	401	462	696	735	516	563	612	358	316	137	150		
FWY 14	84	72	88	73										
Silver Queen Rd		5	7	7	6	7	2							
Silver Queen		5	5		3	3	3	2	2	7	2	3		
Rosamond Blvd & Hwy 58														
NF2	6	6	6	6	6	6	6	6	6	6	6	6	1	
Clay Mine Rd	111	185	79	185	63	18	6	14	45	4				
BORAX	30	60	82	31	44	58	72	85	54	62				
BORAX	1630	1467	1246	664	24									
BORAX	865	682	735	678	605	651	1109	841	1039	1415	935			
BORAX	264	358	262	253	364	368	268	283	239	190	116			
BOFOW														
CAL CITY BLVD	178	190	157	75	52	259	898	897	1645	1887	990			

AVEK West Feeder Deliveries 1976 through 2005

LOCATION

AVE CA, POPPY PRES	1.4R
160 W	1.4R
140th W	6.0L
140th W	6.0L
140th W	6.0R
140th W	6.6R
140th W	6.6R(So)
140th W	7.0L
140th W	7.5R
140th W	7.5R1
140th W	7.6L
140th W	9.0LA
140th W	9.0LB
140th W	9.0LD
140th W	10.5LA 1"
25th W (So)	10.5LA 10"
125th W (M)	10.5LA1 12"
25th W (No)	10.5LB 12"
120th W	10.8L
115th W	11.6R2
115th W	11.6R3
107th W	12.3R1
107th W	12.3R2
105th W	12.5L
100th W	13.0R
90th W	13.8R
90th W (NE)	13.9L
90th W (SE)	13.9L
80th W	14.9R1 (S)
72nd W	15.7L
65th W	16.5R
62nd W	16.7L
42nd W	20.2L
42nd W	20.2L1
35th W	21.7L
	DAYS

LOCATION

AVE CA, POPPY PRES	1.4R
160 W (HEALY)	1.4R
140th W	6.0L
140th W	6.0R
140th W	6.6R
140th W	6.6R(So)
140th W	7.0L
140th W	7.5R
140th W	7.5R1
140th W	7.6L
140th W	9.0LA
140th W	9.0LB (WEST)
140th W	9.0LB EAST C
140th W	9.0LB So(VAN)
140th W	9.0LD
140th W	10.5LA 1"
25th W (So)	10.5LA 10"
125th W (M)	10.5LA1 12"
25th W (No)	10.5LB 12"
120th W	10.8L1 (M)
115th W	11.6R1
115th W	11.6R2
107th W	12.3R1

AVEK West Feeder Deliveries 1976 through 2005

107th W  
 105th W  
 100th W  
 90th W  
 90th W (NE)  
 90th W (SE)  
 APTA 80th W  
 80th W  
 72nd W  
 65th W  
 62nd W  
 42nd W  
 35th W

12.3RZ  
 12.5L  
 13.0K  
 13.8R  
 13.9L  
 13.9R  
 14.9R1 (S)  
 14.9R2 (N)  
 15.7L  
 16.5R  
 16.7L  
 20.2L  
 20.2L1 (BISC)  
 21.7L  
 DAYS

34th W & FELSITE  
 25th W & FELSITE  
 SIERRA HWY  
 MPS  
 FWY 14 (86500002)  
 ROSAMOND BLVD & HWY 58  
 INF2  
 CLAY MINE RD  
 BORAX RD  
 BORAX RD  
 BORAX RD  
 BORON PS (METER HEAD)  
 SOUTH OF BORON  
 CAL CITY BLVD  
 DAYS

0

34th W & FELSITE  
 25th W & FELSITE  
 SIERRA HWY  
 MPS  
 FWY 14 (86500002)  
 SILVER QUEEN RD  
 ROSAMOND BLVD & HWY 58  
 INF2  
 CLAY MINE RD  
 BORAX RD  
 BORAX RD  
 BORAX RD  
 BORON PS (METER HEAD)  
 SOUTH OF BORON  
 CAL CITY BLVD  
 DAYS

0



AVEK West Feeder Deliveries 1976 through 2005

LOCATION	1976 TOTAL
160th W	5425
140th W	22708
140th W	4461
140th W	38567
140th W	38458
140th W	27084
140th W	34179
140th W	43740
140th W	20617
140th W	6495
140th W	15317
125th W	10922
125th W	10067
101st	7815
100th W	10042
118th	18090
118th	19067
125th	19048.61
100th W	9697
100th W	8601
133rd	8994
133rd	4073
142nd	8103
153rd	2764
157th	29738
165th	7454
167th	2265
202nd	12050
211st	3797
217th	1775
217th	4
34th W & FelSITE	12053
25th W & FelSITE	1416
Sierra Hwy	3259
MPS	7852
FWY 14	950
Silver Queen Rd	34
Silver Queen	27
Rosemond BLVD & HWY 58	22968.42
MF2	153
Clay Mine RD	1189
BORAX	1809
BORAX	23959
BORAX	32702
BORON	7468
BORON	2025.46
CAL CITY BLVD	15069



		Total Applied Water Requirement (AF)														AVEK Surface Water Deliveries (AF)														
Parcel Group	Former Owner	Parcels	2000	2001	2002	2003	2004	2005	2006	2007	2008	2009	2010	2011	2012	2000	2001	2002	2003	2004	2005	2006	2007	2008	2009	2010	2011	2012		
1	Arcuri	83-87	309	309	309	309	309	1	1	1	1	1	1	1	1	0	0	0	0	0	0	0	0	0	0	0	0	0	0	
2	Bejulan	67	681	681	571	571	571	571	571	571	571	571	571	571	0	0	0	0	0	0	0	0	0	0	0	0	0	0	0	0
3	eSolar	88-117	1,664	1,290	1,401	2,494	2,453	987	659	1,027	825	1,014	3,584	1	1	0	0	0	0	0	0	0	0	0	0	0	0	0	0	0
4	Grimmway	0-24, 28-41, 45	3,563	2,646	2,692	1,487	2,048	1,791	2,401	1,666	1,941	414	1,490	2,916	1,242	1,863	1,926	2,145	1,065	999	1,622	2,766	3,521	1,720	511	738	2,327	2,284		
5	Harter	71-79	856	1,221	1,884	1,544	1,675	2,207	2,207	2,028	2,028	1,987	1,987	1,906	1,779	790	795	982	108	455	1.5	34.4	595.1	0.5	0	0	0	0.5	0	
6	Robertson & Nikkel	25-27	0	0	0	0	0	0	0	0	0	0	0	0	0	0	0	0	0	0	0	0	0	0	0	0	0	0	0	
7	Sandhu	56	272	272	272	272	272	272	272	272	272	164	272	272	272	0	0	0	0	0	0	0	0	0	0	0	0	0	0	
8	Collins, Doyle, Wong	42-44	0	0	0	0	0	0	0	0	0	0	0	0	0	0	0	0	0	0	0	0	0	0	0	0	0	0	0	
9	Bagnell, Faber	80-82	1	1	1	1	1	1	1	1	1	1	1	1	1	0	0	0	0	0	0	0	0	0	0	0	0	0	0	
10	Dennis	121	247	494	247	247	0	494	494	494	0	0	0	0	0	0	0	0	0	0	0	0	0	0	0	0	0	0	0	
11	Hemmerling	118,122,123,123A	1,339	1,584	797	792	0	547	547	1,089	542	542	542	0	0	0	0	0	0	0	0	0	0	0	0	0	0	0	0	
12	O'Neil	124	275	275	275	275	0	275	275	275	275	275	275	275	275	0	0	0	0	0	0	0	0	0	0	0	0	0	0	
13	Reca	119	559	559	559	559	0	559	559	559	559	559	559	559	559	0	0	0	0	0	0	0	0	0	0	0	0	0	0	
14	Wilson	120	0	0	0	0	0	0	0	1,081	0	0	0	0	0	0	0	0	0	0	0	0	0	0	0	0	0	0	0	
<b>Total</b>			<b>9,767</b>	<b>9,333</b>	<b>9,007</b>	<b>8,550</b>	<b>7,329</b>	<b>7,704</b>	<b>7,987</b>	<b>9,065</b>	<b>7,015</b>	<b>5,527</b>	<b>7,282</b>	<b>5,930</b>	<b>4,129</b>	<b>2,653</b>	<b>2,721</b>	<b>3,127</b>	<b>1,173</b>	<b>1,454</b>	<b>1,624</b>	<b>2,800</b>	<b>4,116</b>	<b>1,721</b>	<b>511</b>	<b>738</b>	<b>2,327</b>	<b>2,284</b>		

Harter													
Estimated Groundwater Pumpage from SCE power bills and pump test data (AF/yr)													
Well	2000	2001	2002	2003	2004	2005	2006	2007	2008	2009	2010	2011	2012
1	20	446	921	274	298	404	385	242	424	993	727	625	684
2	0	0	77	843	930	641	660	762	709	575	573	635	690
<b>Total</b>	<b>20</b>	<b>446</b>	<b>998</b>	<b>1,117</b>	<b>1,228</b>	<b>1,045</b>	<b>1,045</b>	<b>1,004</b>	<b>1,133</b>	<b>1,568</b>	<b>1,300</b>	<b>1,260</b>	<b>1,375</b>
<b>AVEK Deliveries (AF)</b>	790	795	982	108	455	1.5	34.4	595.1	0.5	0	0	0.5	0

**Notes:**  
Pumpage estimated from power usage using the AZDWR method defined at: <http://www.azwater.gov/dwr/drought/files/estimating%20water%20use%20final.pdf>

Consolidated Pumpage Data and Estimates													
1	20	446	921	274	298	404	385	242	424	993	727	625	883
2	0	0	77	843	930	641	660	762	709	575	573	635	896
<b>Total</b>	<b>20</b>	<b>446</b>	<b>998</b>	<b>1,117</b>	<b>1,228</b>	<b>1,045</b>	<b>1,045</b>	<b>1,004</b>	<b>1,133</b>	<b>1,568</b>	<b>1,300</b>	<b>1,260</b>	<b>1,779</b>