


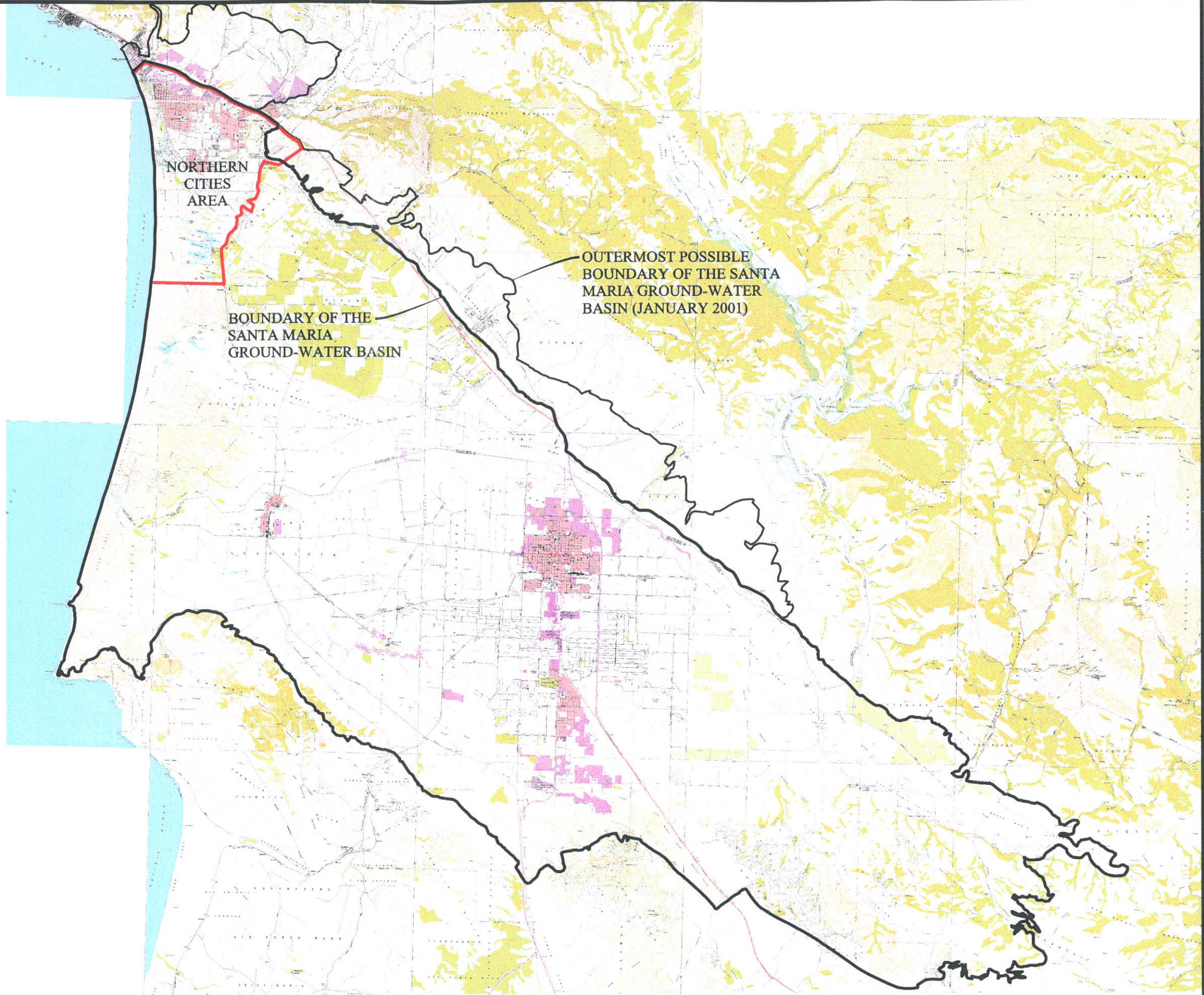


LEGEND

-  BOUNDARY OF THE SANTA MARIA GROUND-WATER BASIN
-  BOUNDARY OF NORTHERN CITIES AREA INCLUDING THE ARROYO GRANDE PLAIN AND CIENEGA VALLEY TO BE EXCLUDED FROM THE LITIGATION
-  OUTERMOST POSSIBLE BOUNDARY OF THE SANTA MARIA GROUND-WATER BASIN (JANUARY 2001)



SANTA MARIA GROUND-WATER BASIN

PREPARED FOR THE COURT APPOINTED
TECHNICAL COMMITTEE

BY
Wagner Bonsignore
Consulting Civil Engineers, A Corporation
ROBERT C. WAGNER

OCTOBER 2001

BASE MAP PER U.S.G.S. 7.5 MINUTE QUAD MAPS FOR ARROYO GRANDE NE, BRANCH MT., CALDWELL, CASMALIA, CHIMNEY CANYON, FOXEN CANYON, GUADALUPE, HUASNA PEAK, LOS MACHOS HILLS, MANZANITA MT., MIRANDA PINE, NIPOMO, OCEANO, ORCUTT, PISMO BEACH, POINT SAL, SANTA MARIA, SISQUOC, TAR SPRING RIDGE, TEPUSQUET CANYON, TWITCHELL DAM, AND ZACA LAKE CALIFORNIA.