

1 JEANNE M. ZOLEZZI, SBN: 121282
WILLIAM R. CARLSON, SBN: 224306
2 HERUM \ CRABTREE
A California Professional Corporation
3 5757 Pacific Avenue, Suite 222
Stockton, CA 95207
4 Telephone: (209) 472-7700
Facsimile: (209) 472-7986

5 Attorneys for Cross-Defendant
6 ANTELOPE VALLEY WATER STORAGE, LLC

7
8 **SUPERIOR COURT OF CALIFORNIA**
9 **COUNTY OF LOS ANGELES – CENTRAL DISTRICT**

10
11 Coordination Proceeding
Special Title (Rule 1550(b))

Judicial Council Coordination Proceeding No.
4408

12 **ANTELOPE VALLEY GROUNDWATER**
13 **CASES**

Santa Clara Case No. 1-05-CV-049053
The Honorable Jack Komar, Dept. 17

14 Included actions:

**ANTELOPE VALLEY WATER STORAGE,
LLC'S REQUEST TO ANTELOPE
VALLEY EAST-KERN WATER AGENCY
TO PRODUCE WITNESSES AND
DOCUMENTS AT TRIAL**

15 Los Angeles County Waterworks District No.
16 40 v. Diamond Farming Company, a
corporation, Superior Court of California,
County of Los Angeles, Case No. BC325201;

Trial Date: May 28, 2013
Time: 9:00 a.m.
Dept: 1

17
18 Los Angeles County Waterworks District No.
40 v. Diamond Farming Company, a
19 corporation, Superior Court of California,
County of Kern, Case No. S-1500-CV-254-
20 348;

21 Wm. Bolthouse Farms, Inc. v. City of
Lancaster, Diamond Farming Company, a
22 corporation, v. City of Lancaster, Diamond
Farming Company, a corporation vs. Palmdale
23 Water District, Superior Court of California,
County of Riverside, Case Nos. RIC 353840,
24 RIC 344436, RIC 344668.

25 TO ANTELOPE VALLEY EAST-KERN WATER AGENCY AND ITS ATTORNEYS OF
26 RECORD:

27 NOTICE IS HEREBY GIVEN that pursuant to Code of Civil Procedure §1987(b) and
28 (c), Antelope Valley Water Storage, LLC ("AVWS") requests that Antelope Valley East-Kern

1 Water Agency (“AVEK”) produce its custodian of records at the trial of the above-captioned
2 matter on May 28, 2013 at 9:00 a.m., in Department 1 of the Los Angeles County Superior
3 Court, located at 111 N. Hill Street, Los Angeles, California, the Honorable Jack Komar
4 presiding, or, if the trial is continued, trailed, or transferred to another location by order of the
5 court, at the new date, time, and location set by the court, to testify as witnesses in this action.
6 Arrangements may be made with the law firm of Herum Crabtree in writing for a scheduled
7 appearance after a courtroom is assigned on or after May 28, 2013.

8 PLEASE TAKE FURTHER NOTICE that pursuant to Code of Civil Procedure §1987(c),
9 AVWS requests that AVEK produce the original documents listed below in AVEK’S possession
10 or under its control, at the trial of the above-captioned matter at the time and place listed above.

11 **DEFINITIONS**

12 1. The term "DOCUMENT" means all written or graphic matter, however produced,
13 or reproduced, of every kind and description in YOUR actual or constructive possession,
14 custody, care or control, including, without limitation, all writings, drawings, graphs, charts,
15 photographs, blueprints, sketches, sound tapes or recordings, video tapes or recordings, papers,
16 books, accounts, letters, microfilm, magnetic tape, laser discs, magnetic discs, magnetic strips,
17 optical recognition characters, punched paper tapes, microfiche, punched cards, telegrams, wires,
18 cables, invoices, statements, account recommendations, notes, minutes, purchase orders,
19 memoranda including intercorporate, intra corporate, interoffice, and intra office memoranda,
20 reports, studies, contracts, agreements, correspondence, ledgers, books of account, vouchers,
21 bank checks, manifests, charge slips, expense account reports, hotel charges, receipts, working
22 papers, drafts, maps, surveys, plats, statistical records, cost sheets, stenographer notebooks,
23 calendars, appointment books, diaries, time sheets or logs, computer printouts, computer files,
24 computer discs, electronic mail, websites, computer or other data compilations from which
25 information can be obtained or translated through detection devices into reasonably usable form,
26 or any other tangible thing that constitutes or contains matters contained within the scope of
27 “writings” as defined by California Evidence Code § 250.

28 2. The term “RELATE” means to evidence, recount, reflect, report, identify,

1 describe, refer, discuss, summarize, explain or modify.

2 3. The terms “YOU” or “YOUR” refer to Antelope Valley East-Kern Water Agency,
3 and any of its agents, legal representatives, officers or employees.

4 **DOCUMENTS TO BE PRODUCED**

5 1. The document prepared by YOU titled “AVEK Turnouts 9.0L A-D” which shows
6 the location of AVEK Turnouts 9.0LA/B/C/D, a true and correct copy of which is attached
7 hereto as **Exhibit A**.

8 2. The “Sales Journal” report prepared by YOU for Customer IDs from Diamond
9 9.0LA to Diamond 9.0LD for the period from January 1, 2000 to December 31, 2012, a true and
10 correct copy of which is attached hereto as **Exhibit B**.

11 3. The “Sales Journal” report prepared by YOU for Customer IDs from Van Dam to
12 Van Dam for the period from January 1, 2005 to December 31, 2005, a true and correct copy of
13 which is attached hereto as **Exhibit C**.

14 4. The “Sales Journal” report prepared by YOU for Customer IDs from Van Dam to
15 Van Dam for the period from December 1, 2006 to December 31, 2012, a true and correct copy
16 of which is attached hereto as **Exhibit D**.

17 5. The “Sales Journal” report prepared by YOU for Customer IDs from AV Water
18 Storage to AV Water Storage for the period from January 1, 2000 to October 31, 2012, a true and
19 correct copy of which is attached hereto as **Exhibit E**.

20 6. The document prepared by YOU titled “AVEK West Feeder Deliveries 1976
21 through 2005” which shows the amounts of water delivered to various locations including
22 AVEK Turnouts 9.0LA/B/C/D, a true and correct copy of which is attached hereto as **Exhibit F**.

23 7. The document prepared by YOU titled “AVEK Customer Water Use Report -
24 2012” which is dated November 27, 2012, a true and correct copy of which is attached hereto as
25 **Exhibit G**.

26 These requests are made pursuant to Section 1987(b) and (c) of the Code of Civil
27 Procedure, which provide that the giving of this Notice has the same effect as the service of a
28 subpoena and that, in the event of noncompliance with this Notice, the parties shall have such

1 rights, and the Court may make such orders, including the imposition of sanctions, as in the case
2 of a subpoena for attendance before the court.

3 Dated: May 3, 2013

HERUM \ CRABTREE
A California Professional Corporation

4
5
6
7
8
9
10
11
12
13
14
15
16
17
18
19
20
21
22
23
24
25
26
27
28

By: s\William R. Carlson
WILLIAM R. CARLSON
Attorneys for Cross-Defendant
ANTELOPE VALLEY WATER STORAGE, LLC

EXHIBIT A

AVEK TURNOUTS 9.02A-D 140TH ST W & E
CASTLE ROCK, CO

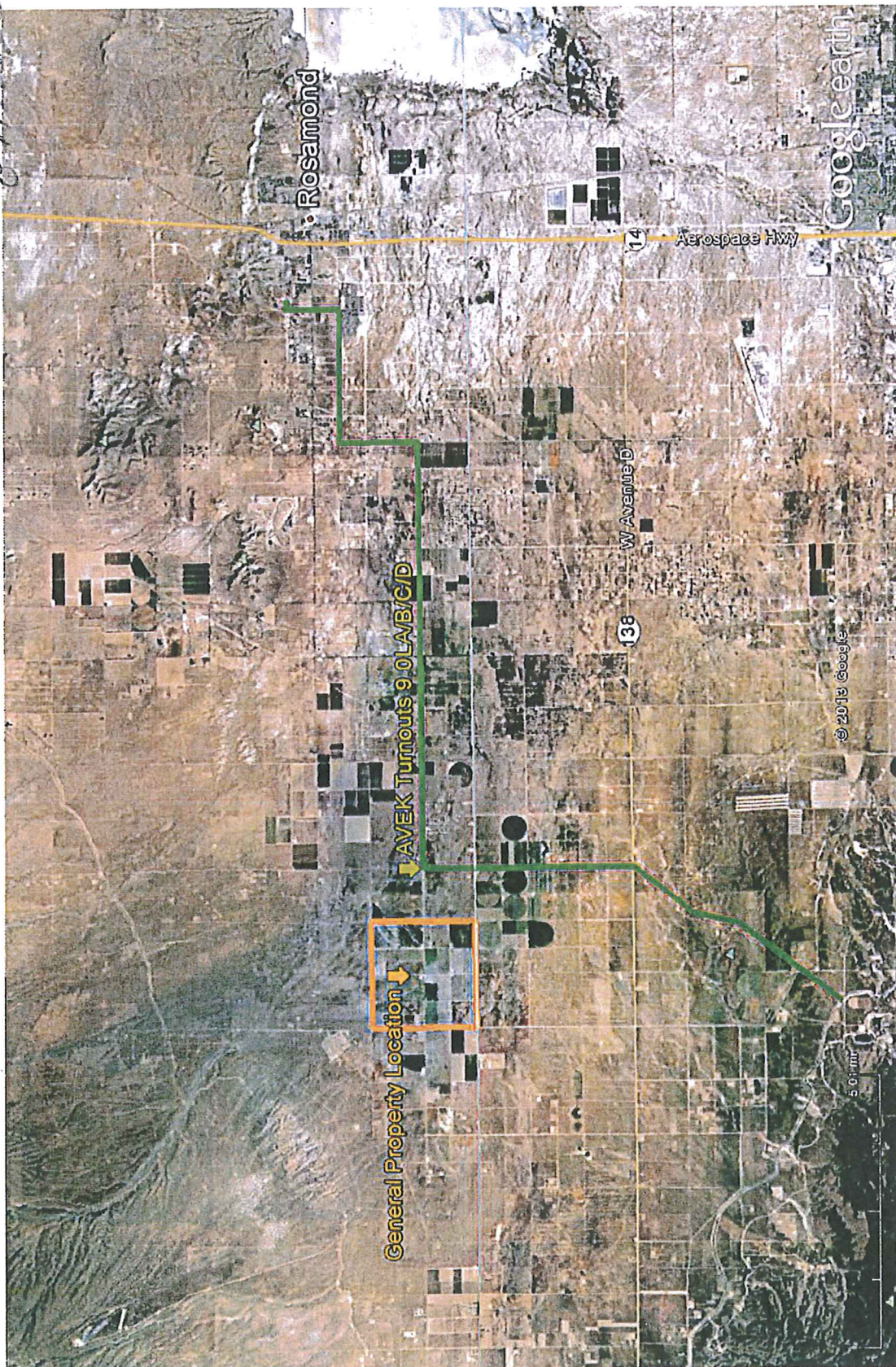


EXHIBIT B

1/22/13 at 12:44:27.54

1/2000 - 4/2000

AVEK Water Agency - 2012
Sales Journal

For the Period From Jan 1, 2000 to Dec 31, 2012

Filter Criteria includes: 1) Customer IDs from Diamond 9.0LA to Diamond 9.0LD. Report order is by Invoice/CM Date. Report is printed in Detail Format.

| Date | Account ID | Invoice/CM # | Line Description | Debit Amnt | Credit Amnt | Qty |
|---------|--------------------------------------|--------------|---|-----------------------|-----------------------|----------------------------|
| 1/31/00 | 420300 152000 | 1154 | Irrigation pipeline -untreated Diamond Farming Co 9.0LB | 329.34 | 329.34 | 4.99 |
| 1/31/00 | 420300 420300 152000 | 1155 | Irrigation pipeline -untreated On time payment credit Diamond Farming Co 9.0LB E | 29.28 1,822.02 | 1,851.30 | 28.05 9.76 |
| 1/31/00 | 420300 152000 | 1156 | Monthly prepaid water charge Diamond Farming Co 9.0LD | 2,640.00 | 2,640.00 | 40.00 |
| 2/29/00 | 420300 152000 | 1267 | Monthly prepaid water charge Diamond Farming Co 9.0LB | 7,920.00 | 7,920.00 | 120.00 |
| 2/29/00 | 420300 420300 152000 | 1268 | Irrigation pipeline -untreated Monthly prepaid water charge Diamond Farming Co 9.0LB E | 16,195.74 | 5,635.74 10,560.00 | 85.39 160.00 |
| 2/29/00 | 420300 152000 | 1269 | Monthly prepaid water charge Diamond Farming Co 9.0LD | 2,640.00 | 2,640.00 | 40.00 |
| 3/31/00 | 420300 152000 | 1379 | Monthly prepaid water charge Diamond Farming Co 9.0LB | 7,920.00 | 7,920.00 | 120.00 |
| 3/31/00 | 420300 420300 420300 152000 | 1380 | Irrigation pipeline -untreated Monthly prepaid water charge On time payment credit Diamond Farming Co 9.0LB E | 256.17 21,812.25 | 6,228.42 15,840.00 | 94.37 240.00 85.39 |
| 3/31/00 | 420300 420300 152000 | 1381 | Monthly prepaid water charge Prior month prepaid credit Diamond Farming Co 9.0LD | 2,640.00 5,280.00 | 7,920.00 | 120.00 40.00 |
| 4/30/00 | 420300 152000 | 1503 | Prior month prepaid credit Diamond Farming Co 9.0LB | 7,920.00 | 7,920.00 | 120.00 |
| 4/30/00 | 420300 420300 420300 152000 | 1504 | Irrigation pipeline -untreated Monthly prepaid water charge Prior month prepaid credit Diamond Farming Co 9.0LB E | 11,428.56 6,600.00 | 11,428.56 6,600.00 | 173.16 100.00 160.00 |
| 4/30/00 | 420300 152000 | 1505 | Prior month prepaid credit Diamond Farming Co 9.0LD | 2,640.00 | 2,640.00 | 40.00 |
| 4/30/00 | 420300 152000 | 1577 | Prior month prepaid credit Diamond Farming Co 9.0LD | 7,920.00 | 7,920.00 | 120.00 |
| 4/30/00 | 420300 | 1578 | Prior month prepaid credit | 7,920.00 | 7,920.00 | 120.00 |

9.0LB(E) 1419.89
9.0LD -0-

1/22/13 at 12:44:27.56

5/2000 - 12/2000

AVEK Water Agency - 2012
Sales Journal

For the Period From Jan 1, 2000 to Dec 31, 2012

Filter Criteria includes: 1) Customer IDs from Diamond 9.0LA to Diamond 9.0LD. Report order is by Invoice/CM Date. Report is printed in Detail Format.

| Date | Account ID | Invoice/CM # | Line Description | Debit Amnt | Credit Amnt | Qty |
|----------|------------|--------------|--------------------------------|------------|-------------|--------|
| | 152000 | | Diamond Farming Co 9.0LB | | 7,920.00 | |
| 5/31/00 | 420300 | 1624 | Irrigation pipeline -untreated | | 156.45 | |
| | 420300 | | Monthly prepaid water charge | | 320.00 | |
| | 420300 | | Prior month prepaid credit | 15,840.00 | 21,120.00 | 240.00 |
| | 420300 | | Adjustment-April (Van Dam) | 5,449.62 | | -82.57 |
| | 152000 | | Diamond Farming Co 9.0LB | 10,156.08 | | |
| | | | E | | | |
| 6/30/00 | 420300 | 1743 | Irrigation pipeline -untreated | | 16,076.94 | 243.59 |
| | 420300 | | Monthly prepaid water charge | | 320.00 | |
| | 420300 | | Prior month prepaid credit | 6,600.00 | 21,120.00 | 100.00 |
| | 420300 | | On time payment credit | 469.35 | | 156.45 |
| | 152000 | | Diamond Farming Co 9.0LB | 30,127.59 | | |
| | | | E | | | |
| 7/31/00 | 420300 | 1865 | Irrigation pipeline -untreated | | 20,394.00 | 309.00 |
| | 420300 | | Monthly prepaid water charge | | 100.00 | |
| | 420300 | | Prior month prepaid credit | 21,120.00 | 6,600.00 | 320.00 |
| | 152000 | | Diamond Farming Co 9.0LB | 5,874.00 | | |
| | | | E | | | |
| 8/31/00 | 420300 | 1986 | Irrigation pipeline -untreated | | 9,083.58 | 137.63 |
| | 420300 | | Monthly prepaid water charge | | 40.00 | |
| | 420300 | | Prior month prepaid credit | 21,120.00 | 2,640.00 | 320.00 |
| | 420300 | | On time payment credit | 927.00 | | 309.00 |
| | 152000 | | Diamond Farming Co 9.0LB | 10,323.42 | | |
| | | | E | | | |
| 9/30/00 | 420300 | 2108 | Irrigation pipeline -untreated | | 7,592.64 | 115.04 |
| | 420300 | | Monthly prepaid water charge | | 40.00 | |
| | 420300 | | Prior month prepaid credit | 6,600.00 | 2,640.00 | 100.00 |
| | 420300 | | Prior month prepaid credit | 2,640.00 | | 40.00 |
| | 420300 | | On time payment credit | 412.89 | | 137.63 |
| | 152000 | | Diamond Farming Co 9.0LB | 579.75 | | |
| | | | E | | | |
| 10/31/00 | 420300 | 2288 | Irrigation pipeline -untreated | | 4,538.82 | 68.77 |
| | 420300 | | Prior month prepaid credit | 2,640.00 | 40.00 | |
| | 420300 | | On time payment credit | 345.12 | | 115.04 |
| | 152000 | | Diamond Farming Co 9.0LB | 1,553.70 | | |
| | | | E | | | |
| 11/30/00 | 420300 | 2334 | Irrigation pipeline -untreated | | 557.04 | 8.44 |
| | 420300 | | On time payment credit | 206.31 | | 68.77 |
| | 152000 | | Diamond Farming Co 9.0LB | 350.73 | | |
| | | | E | | | |
| 12/29/00 | 420300 | 2467 | On time payment credit | 25.32 | | 8.44 |
| | 152000 | | Diamond Farming Co 9.0LB | | 25.32 | |
| | | | E | | | |

1/22/13 at 12:44:27.57

AVEK Water Agency - 2012
Sales Journal

For the Period From Jan 1, 2000 to Dec 31, 2012

Filter Criteria includes: 1) Customer IDs from Diamond 9.0LA to Diamond 9.0LD. Report order is by Invoice/CM Date. Report is printed in Detail Format.

| Date | Account ID | Invoice/CM # | Line Description | Debit Amnt | Credit Amnt | Qty |
|----------|------------|----------------|--|------------|-------------|---------|
| 5/24/01 | 410400 | 2980 | Dry Year Water Purchase 2001 | | 197,196.38 | 1953.60 |
| | 128560 | | Deposit - Dry Year 2001 Water | 61,050.00 | | |
| | 152250 | | Diamond Farming Co 9.0LD | 136,146.38 | | |
| 12/31/01 | 420300 | 3964 | Irrigation pipeline -untreated Dec | | 976.14 | 14.79 |
| | 152000 | | Diamond Farming Co 9.0LB | 976.14 | | |
| 1/7/02 | 410400 | 4280 | Diamond Farming Co 9.0LD | 96,047.44 | | |
| | 152000 | | Diamond Farming Co 9.0LD | 96,047.44 | | |
| 2/28/02 | 420300 | 4166 | Monthly prepaid water charge April 2002 | | 26,550.00 | 150.00 |
| | 152000 | | Diamond Farming Co 9.0LB | 26,550.00 | | |
| 12/31/02 | 420300 | 5332 | Prior month prepaid credit April 2002 for 9.0LB | | 26,550.00 | 150.00 |
| | 152000 | | Diamond Farming Co 9.0LD | 26,550.00 | | |
| 12/31/02 | 152000 | Adjustment 3 | Prepay Feb. 2003 for 10.5 LA12 | | 21,240.00 | |
| | 152000 | | Prepay Feb. 2003 for 10.5 LA 10 | | 7,965.00 | |
| | 152000 | | Diamond Farming Co 9.0LD | 29,205.00 | | |
| 12/31/02 | 152000 | Adjustment 7 | Usage for 10" Dec. 2002 | | 80.25 | |
| | 152000 | | Usage for 12" Dec. 2002 | | 87.00 | |
| | 152000 | | Usage for 6.0 Dec. 2002 | | 85.86 | |
| | 152000 | | Diamond Farming Co 9.0LD | 253.11 | | |
| 1/31/03 | 152000 | Adjustment 6 - | Water usage Jan 03/ 10.5LA 10" | | 292.38 | |
| | 152000 | | Water usage Jan 03/10.5LA1 12" | | 87.00 | |
| | 152000 | | Water usage Jan 03/10.5LB 12" | | 88.50 | |
| | 152000 | | Diamond Farming Co 9.0LD | 467.88 | | |
| 1/31/03 | 152000 | Adjustment 7 - | Prepay Mar. 2003 10.5LA 10" | | 7,965.00 | |
| | 152000 | | Prepay Mar. 2003 10.5LA1 | | 21,240.00 | |
| | 152000 | | Diamond Farming Co 9.0LD | 29,205.00 | | |
| 1/31/03 | 152000 | 5446 | Apply Invoice #5444 | | 2.31 | |
| | 152000 | | Diamond Farming Co 9.0LD | 2.31 | | |
| 3/7/03 | 152000 | Adjustment 8 | Water Usage Adj #1 | | 189.69 | |
| | 152000 | | Water Usage Adj #1 | | 1,035.72 | |
| | 152000 | | Water Usage Adj #3 | | 1.50 | |
| | 152000 | | Diamond Farming Co 9.0LD | 1,223.91 | | |
| 3/7/03 | 152000 | Adjustment 9 | April Prepaid Water Charge 10.5LA 10" | | 15,930.00 | |
| | 152000 | | Feb. Prepaid Credit 10.5LA 10" | | 7,965.00 | |
| | 152000 | | April Prepaid Water Charge 10.5LA 17" | | 28,320.00 | |

AVEK Water Agency - 2012
Sales Journal

For the Period From Jan 1, 2000 to Dec 31, 2012

Filter Criteria includes: 1) Customer IDs from Diamond 9.0LA to Diamond 9.0LD. Report order is by Invoice/CM Date. Report is printed in Detail Format.

| Date | Account ID | Invoice/CM # | Line Description | Debit Amnt | Credit Amnt | Qty |
|---------|------------|--------------|--|--------------|--------------|-----|
| | 152000 | | 10.5LA1 12" | | | |
| | | | Feb Prepaid Credit 10.5LA 1 12" | 21,240.00 | | |
| | 152000 | | Diamond Farming Co 9.0LD | 15,045.00 | | |
| 4/4/03 | 152000 | | Water usage March | | 916.86 | |
| | 152000 | | Water usage 10" | | 7,867.65 | |
| | 152000 | | Diamond Farming Co 9.0LD | 8,784.51 | | |
| 4/4/03 | 152000 | | May prepaid | | 15,930.00 | |
| | 152000 | | May prepaid 10" | | 42,480.00 | |
| | 152000 | | Diamond Farming Co 9.0LD | 58,410.00 | | |
| 4/4/03 | 152000 | | March prepaid Credit | | 7,965.00 | |
| | 152000 | | March prepaid Cr. 10" | | 21,240.00 | |
| | 152000 | | Diamond Farming Co 9.0LD | | 29,205.00 | |
| 4/4/03 | 152000 | | March Discount | | 3.30 | |
| | 152000 | | March discount 10" | | 17.58 | |
| | 152000 | | Diamond Farming Co 9.0LD | | 20.88 | |
| 4/30/03 | 152000 | | Adjustment 2 - 9 | | 3,789.57 | |
| | 152000 | | Water Usage 10" April 2003 | | 6,564.93 | |
| | 152000 | | Water Usage 12" April 2003 | | 23,895.00 | |
| | 152000 | | Prepaid Water-Charge 10" June 2003 | | 42,480.00 | |
| | 152000 | | Prepaid Water-Charge 12" June 2003 | | | |
| | 152000 | | Prepaid Credit 10" April 2003 | 15,930.00 | | |
| | 152000 | | Prepaid Credit 12" April 2003 | 28,320.00 | | |
| | 152000 | | Discount 10" | 15.54 | | |
| | 152000 | | Discount 12" | 133.35 | | |
| | 152000 | | Diamond Farming Co 9.0LD | 32,330.61 | | |
| 5/30/03 | 152000 | | Adjustment for May | | 19,839.42 | |
| | 152000 | | Water Usage 10.5LA 10" May Invoice #5847 | | 41,660.73 | |
| | 152000 | | Water Usage 10.5LA1 12" Diamond Farming Co 9.0LD | 61,500.15 | | |
| 6/30/03 | 152000 | | Adjustment 6 June | | 34,012.23 | |
| | 152000 | | Invoice # 5960 10.5LA 10" | | 60,906.03 | |
| | 152000 | | Invoice #5961 10.5LA1 12" | | 88.50 | |
| | 152000 | | Invoice # 5980 10.5LB 12" Diamond Farming Co 9.0LD | 95,006.76 | | |
| 1/31/04 | 420300 | 6904 | | | 5,627.04 | |
| | 420300 | | | 70,863.15 | | |
| | 420300 | | | 6,778.20 | | |
| | 420300 | | Diamond Farming Co 9.0LD | | 71,580.81 | |
| | 152000 | | Total | 1,106,177.64 | 1,106,177.64 | |

EXHIBIT C

AVEK Water Agency - 2012
Sales Journal

For the Period From Jan 1, 2005 to Dec 31, 2005

Filter Criteria includes: 1) Customer IDs from Van Dam to Van Dam. Report order is by Invoice/CM Date. Report is printed in Detail Format.

2005

| Date | Account ID | Invoice/CM # | Line Description | Debit Amnt | Credit Amnt | Qty |
|---------|------------------|----------------|--|------------|-------------|-------|
| 3/31/05 | 420300 152000 | 8360 Corrected | Irrigation pipeline -untreated Van Dam Farms 9.0LB | 3,417.50 | 3,417.50 | 27.34 |
| 4/30/05 | 420300 152000 | 8467 | Irrigation pipeline -untreated April 2005 Priority Two Water Van Dam Farms 9.0LB | 5,982.50 | 5,982.50 | 47.86 |
| | | Total | | 9,400.00 | 9,400.00 | |

EXHIBIT D

AVEK Water Agency - 2012
Sales Journal

For the Period From Dec 1, 2006 to Dec 31, 2012

Filter Criteria includes: 1) Customer IDs from Van Dam to Van Dam. Report order is by Invoice/CM Date. Report is printed in Detail Format.

| Date | Account ID | Invoice/CM # | Line Description | Debit Amnt | Credit Amnt | Qty |
|---------|------------|--------------|---|------------|-------------|------|
| 1/31/07 | 420300 | 10820 | Irrigation pipeline-untreated Jan 2007 | | 67.00 | 0.50 |
| | 152000 | | Van Dam Farms | 67.00 | | |
| | | Total | | 67.00 | 67.00 | |

2007

EXHIBIT E

1/22/13 at 12:36:45.88

2/2010 - 6/2011

AVEK Water Agency - 2012
Sales Journal

MCC Gaus

For the Period From Jan 1, 2000 to Oct 31, 2012

Filter Criteria includes: 1) Customer IDs from AV Water Storage to AV Water Storage. Report order is by Invoice/CM Date. Report is printed in Detail Format.

| Date | Account ID | Invoice/CM # | Line Description | Debit Amnt | Credit Amnt | Qty |
|----------|--------------------------------------|--------------|---|--|--|----------------------------|
| 2/28/10 | 420700 152000 | 14895 | Water Banking Rate AV Water Storage, LLC | 58,878.92 | 58,878.92 | 285.82 |
| 3/31/10 | 420700 152000 | 15003 | Water Banking Rate - March 2010 AV Water Storage, LLC | 28,267.32 | 28,267.32 | 137.22 |
| 4/30/10 | 420700 152000 | 15120 | Water Banking Rate April 2010 AV Water Storage, LLC | 16,350.22 | 16,350.22 | 79.37 |
| 10/31/10 | 420700 152000 | 15809 | Water Banking Rate Oct 2010 AV Water Storage, LLC | 12,739.04 | 12,739.04 | 61.84 |
| 11/30/10 | 420700 152000 | 15877 | Water Banking Rate Nov 2010 AV Water Storage, LLC | 5,708.26 | 5,708.26 | 27.71 |
| 12/31/10 | 420700 152000 | 15991 | Water Banking Rate AV Water Storage, LLC | 1,170.08 | 1,170.08 | 5.68 |
| 2/28/11 | 420700 152000 | 16208 | Water Banking Rate AV Water Storage, LLC | 3,407.24 | 3,407.24 | 16.54 |
| 3/31/11 | 420700 152000 | 16327 | Water Banking Rate AV Water Storage, LLC | 103.00 | 103.00 | 0.50 |
| 4/27/11 | 175006 152300 | 16376 | AV Water Bank Turnout AV Water Storage, LLC | 3,513.19 | 3,513.19 | |
| 4/30/11 | 420700 420700 420700 152000 | 16442 | 9.0LA Water Banking Rate April 2011 9.0LB Water Banking Rate April 2011 9.0LD Water Banking Rate April 2011 AV Water Storage, LLC | 85,551.80 127,060.80 35,934.64 248,547.24 | 85,551.80 127,060.80 35,934.64 | 415.30 616.80 174.44 |
| 5/31/11 | 420700 420700 420700 152000 | 16560 | 9.0LA Water banking Rate May 2011 9.0LB Water Banking Rate May 2011 9.0LD Water Banking Rate May 2011 AV Water Storage, LLC | 190,933.16 157,095.60 104,256.60 452,285.36 | 190,933.16 157,095.60 104,256.60 | 926.86 762.60 506.10 |
| 6/30/11 | 420700 420700 420700 152000 | m101 | 9.0LA Water Banking Rate June 2011 9.0LB Water Banking Rate June 2011 Water Banking Rate AV Water Storage, LLC | 183,914.74 147,642.26 103,216.30 434,773.30 | 183,914.74 147,642.26 103,216.30 | 892.79 716.71 501.05 |

1/22/13 at 12:36:45.89

6/2011 (cont) - 7/2012

AVEK Water Agency - 2012
Sales Journal

INCL Cont B

For the Period From Jan 1, 2000 to Oct 31, 2012

Filter Criteria includes: 1) Customer IDs from AV Water Storage to AV Water Storage. Report order is by Invoice/CM Date. Report is printed in Detail Format.

| Date | Account ID | Invoice/CM # | Line Description | Debit Amnt | Credit Amnt | Qty |
|----------|------------|--------------|--|------------|-------------|-----|
| 6/30/11 | 420700 | 16760 | Water Banking Rate 9.0LC May 2011 | 59,622.58 | 289.43 | |
| | 420710 | | Water Banking Rate 9.0LC June 2011 | 141,248.02 | 685.67 | |
| | 152000 | | AV Water Storage, LLC | 200,870.60 | | |
| 7/31/11 | 420700 | 16829 | Water Banking Rate 9.0LA July 2011 | 210,358.96 | 1021.16 | |
| | 420700 | | Water Banking Rate 9.0LB July 2011 | 162,832.70 | 790.45 | |
| | 420700 | | Water Banking Rate 9.0LC July 2011 | 90,675.02 | 440.17 | |
| | 420700 | | Water Banking Rate 9.0LD July 2011 | 111,827.10 | 542.85 | |
| | 152000 | | AV Water Storage, LLC | 575,693.78 | | |
| 8/31/11 | 420700 | 16948 | Water Banking Rate 9.0LA August 2011 | 150,079.24 | 728.54 | |
| | 420700 | | Water Banking Rate 9.0LB August 2011 | 120,215.42 | 583.57 | |
| | 420700 | | Water Banking Rate 9.0LC August 2011 | 81,518.32 | 395.72 | |
| | 420700 | | Water Banking Rate 9.0LD August 2011 | 84,247.82 | 408.97 | |
| | 152000 | | AV Water Storage, LLC | 436,060.80 | | |
| 9/30/11 | 420700 | 17065 | Water Banking Rate 9.0LB October 2011 | 137,853.14 | 669.19 | |
| | 420700 | | Water Banking Rate 9.0LC October 2011 | 85,207.78 | 413.63 | |
| | 420700 | | Water Banking Rate 9.0LD October 2011 | 16,135.98 | 78.33 | |
| | 420700 | | Water Banking Rate 9.0LA October 2011 | 151,506.82 | 735.47 | |
| | 152000 | | AV Water Storage, LLC | 390,703.72 | | |
| 10/31/11 | 420700 | 16631 | 9.0LA Water banking Rate October 2011 | 159,816.86 | 775.81 | |
| | 420700 | | 9.0LB Water Banking Rate October 2011 | 118,353.18 | 574.53 | |
| | 420700 | | 9.0LC Water Banking Rate October 2011 | 79,190.52 | 384.42 | |
| | 420700 | | 9.0LD Water Banking Rate October 2011 | 78,654.92 | 381.82 | |
| | 420700 | | 1000 AF Delivered to RCSD October 2011 | 206,000.00 | | |
| | 152000 | | AV Water Storage, LLC | 230,015.48 | | |
| 11/30/11 | 420700 | 16632 | 8.9L Water Banking Rate November 2011 | 196,730.00 | 955.00 | |
| | 152000 | | AV Water Storage, LLC | 196,730.00 | | |
| 12/31/11 | 152000 | 16633 | AV Water Storage, LLC | | | |
| 2/29/12 | 420700 | 17670 | Water Banking Rate February 2012 | 16,000.02 | 77.67 | |

3/2012 - 4/2012

AVEK Water Agency - 2012
Sales Journal

INCL. GWS.

For the Period From Jan 1, 2000 to Oct 31, 2012

Filter Criteria includes: 1) Customer IDs from AV Water Storage to AV Water Storage. Report order is by Invoice/CM Date. Report is printed in Detail Format.

| Date | Account ID | Invoice/CM # | Line Description | Debit Amnt | Credit Amnt | Qty |
|---------|------------|--------------|---|--------------|--------------|--------|
| | 152000 | | AV Water Storage, LLC | 16,000.02 | | |
| 3/31/12 | 420700 | 16636 | 9.0LC Water Banking Rate March 2012 | | 208.06 | 1.01 |
| | 152000 | | AV Water Storage, LLC | 208.06 | | |
| 4/23/12 | 420700 | 8512 | Water Banking Rate February 2012 Invoice 17670 | 4,326.00 | | -21.00 |
| | 152000 | | AV Water Storage, LLC | | 4,326.00 | |
| | | Total | | 3,522,351.63 | 3,522,351.63 | |

EXHIBIT F

AVEK West Feeder Deliveries 1976 through 2005

| AVE CA, POPPY PRES | LOCATION | WEST FEEDER 2004 | | | | | | | | | | | | TOTAL | | | | | |
|--------------------|-------------|------------------|-------|--------|--------|--------|---------|---------|--------|--------|--------|-------|------|----------|------|------|------|------|---------|
| | | JAN N, E | FEB | MAR | APR | MAY | JUN | JUL | AUG | SEPT | OCT | NOV | DEC | | | | | | |
| 140th W | 1.4R | 0 | 0 | 0 | 0 | 0.5 | 0 | 0 | 0 | 0 | 0 | 0 | 0 | 0 | 0 | 0 | 0 | 0 | 2.3 |
| 140th W | 1.60 W | 0 | 0 | 0 | 0 | 0 | 0 | 0 | 0 | 0 | 0 | 0 | 0 | 0 | 0 | 0 | 0 | 0 | 0 |
| 140th W | 1.4R | 0 | 0 | 0 | 0 | 0 | 0 | 0 | 0 | 0 | 0 | 0 | 0 | 0 | 0 | 0 | 0 | 0 | 0 |
| 140th W | 6.0L | 0 | 0 | 0 | 0 | 0 | 0 | 0 | 0 | 0 | 0 | 0 | 0 | 0 | 0 | 0 | 0 | 0 | 0 |
| 140th W | 6.0L | 0 | 0 | 0 | 0 | 0 | 0 | 0 | 0 | 0 | 0 | 0 | 0 | 0 | 0 | 0 | 0 | 0 | 0 |
| 140th W | 6.0R | 0 | 0 | 0 | 0 | 0 | 0 | 0 | 0 | 0 | 0 | 0 | 0 | 0 | 0 | 0 | 0 | 0 | 0 |
| 140th W | 6.6R | 0 | 0 | 0 | 0 | 155.59 | 107.19 | 200.16 | 110.87 | 57.19 | 0 | 0 | 0 | 0 | 0 | 0 | 0 | 0 | 724.27 |
| 140th W | 6.6R(So) | 0 | 0 | 2.39 | 61 | 109.31 | 67.74 | 284.33 | 165.09 | 98.78 | 0 | 0 | 0 | 0 | 0 | 0 | 0 | 0 | 931.63 |
| 140th W | 7.0L | 0 | 0 | 0 | 0 | 0 | 0 | 0 | 0 | 0 | 0 | 0 | 0 | 0 | 0 | 0 | 0 | 0 | 0 |
| 140th W | 7.5R | 0 | 0 | 0 | 0 | 0 | 0 | 0 | 0 | 0 | 0 | 0 | 0 | 0 | 0 | 0 | 0 | 0 | 0 |
| 140th W | 7.5R1 | 0 | 0 | 0 | 0 | 61.47 | 59.12 | 25 | 86.3 | 77.19 | 16.02 | 0 | 0 | 0 | 0 | 0 | 0 | 0 | 325.1 |
| 140th W | 7.6L | 0 | 0 | 0 | 0 | 0 | 0 | 0 | 0 | 0 | 0 | 0 | 0 | 0 | 0 | 0 | 0 | 0 | 0 |
| 140th W | 9.0LA | 0 | 0 | 0 | 0 | 0 | 0 | 0 | 0 | 0 | 0 | 0 | 0 | 0 | 0 | 0 | 0 | 0 | 0 |
| 140th W | 9.0LB | 0 | 0 | 0 | 0 | 5.2 | 72.39 | 85.71 | 150.69 | 162.37 | 118.5 | 0 | 0 | 0 | 0 | 0 | 0 | 0 | 790.61 |
| 140th W | 9.0LD | 0 | 0 | 0 | 0 | 0 | 0 | 0 | 0 | 0 | 0 | 0 | 0 | 0 | 0 | 0 | 0 | 0 | 0 |
| 125th W | 10.5LA 1" | 0 | 0 | 0 | 0 | 0.5 | 0.96 | 0.55 | 0.55 | 0.55 | 0.5 | 0 | 0 | 0 | 0 | 0 | 0 | 0 | 0 |
| 25th W (So) | 10.5LA 10" | 29.1 | 7.56 | 35.97 | 5.24 | 39.21 | 122.46 | 122.55 | 124.47 | 93.24 | 39.88 | 2.36 | 0.5 | 0.5 | 0.5 | 0.5 | 0.5 | 0.5 | 5.06 |
| 125th W (M) | 10.5LA1 12" | 23.42 | 14.02 | 75.6 | 48.02 | 102.09 | 152.61 | 183.9 | 174.19 | 147.33 | 68.22 | 0 | 5.94 | 5.94 | 5.94 | 5.94 | 5.94 | 5.94 | 622.54 |
| 25th W (No) | 10.5LB 12" | 0 | 0 | 0 | 0 | 0.5 | 0.5 | 0.5 | 0.5 | 0.5 | 0.5 | 0.5 | 0.5 | 0.5 | 0.5 | 0.5 | 0.5 | 0.5 | 4 |
| 120th W | 10.8L | 0 | 0 | 21.61 | 0 | 97.15 | 119.35 | 84.43 | 22.19 | 0.5 | 0 | 0 | 0 | 0 | 0 | 0 | 0 | 0 | 454.89 |
| 115th W | 11.6R2 | 0 | 0 | 0 | 0 | 0 | 0 | 0 | 0 | 0 | 0 | 0 | 0 | 0 | 0 | 0 | 0 | 0 | 0 |
| 115th W | 11.6R3 | 51.8 | 36.94 | 71.05 | 50.05 | 139.55 | 151.69 | 117.91 | 6.39 | 0.5 | 0 | 0 | 0 | 0 | 0 | 0 | 0 | 0 | 625.88 |
| 107th W | 12.3R1 | 0 | 0 | 0 | 0 | 49.99 | 4.07 | 16.06 | 0 | 0 | 0 | 0 | 0 | 0 | 0 | 0 | 0 | 0 | 70.12 |
| 107th W | 12.3R2 | 0 | 0 | 0 | 0 | 0 | 0 | 0 | 0 | 0 | 0 | 0 | 0 | 0 | 0 | 0 | 0 | 0 | 0 |
| 105th W | 12.5L | 0 | 0 | 0 | 0 | 0 | 0 | 0 | 0 | 0 | 0 | 0 | 0 | 0 | 0 | 0 | 0 | 0 | 0 |
| 100th W | 13.0R | 0 | 0 | 0 | 0 | 42.85 | 23.06 | 58.34 | 0.5 | 0 | 0 | 0 | 0 | 0 | 0 | 0 | 0 | 0 | 124.75 |
| 90th W | 13.8R | 0 | 0 | 0 | 0 | 81.6 | 9.88 | 7.73 | 0.5 | 0 | 0 | 0 | 0 | 0 | 0 | 0 | 0 | 0 | 99.71 |
| 90th W (NE) | 13.9L | 0 | 0 | 0 | 0 | 0 | 0 | 0 | 0 | 0 | 0 | 0 | 0 | 0 | 0 | 0 | 0 | 0 | 0 |
| 90th W (SE) | 13.9L | 0 | 0 | 0 | 0 | 0 | 0 | 0 | 0 | 0 | 0 | 0 | 0 | 0 | 0 | 0 | 0 | 0 | 0 |
| 80th W | 14.9R1 (S) | 0 | 0 | 0 | 0 | 0 | 0 | 0 | 0 | 0 | 0 | 0 | 0 | 0 | 0 | 0 | 0 | 0 | 0 |
| 72nd W | 15.7L | 0 | 0 | 0 | 0 | 0 | 0 | 0 | 0 | 0 | 0 | 0 | 0 | 0 | 0 | 0 | 0 | 0 | 0 |
| 65th W | 16.5R | 0 | 0 | 0 | 0 | 24.85 | 46.42 | 123.31 | 110.48 | 23.48 | 0 | 0.91 | 0 | 0 | 0 | 0 | 0 | 0 | 329.45 |
| 62nd W | 16.7L | 0 | 0 | 0 | 0 | 0 | 0 | 0 | 0 | 0 | 0 | 0 | 0 | 0 | 0 | 0 | 0 | 0 | 0 |
| 42nd W | 20.2L | 0 | 0 | 0 | 0 | 0 | 0 | 0 | 0 | 0 | 0 | 0 | 0 | 0 | 0 | 0 | 0 | 0 | 0 |
| 42nd W | 20.2L1 | 0 | 0 | 0 | 0 | 0 | 0 | 0 | 0 | 0 | 0 | 0 | 0 | 0 | 0 | 0 | 0 | 0 | 0 |
| 35th W | 21.7L | 0.5 | 0.5 | 0.5 | 0.86 | 3.28 | 3.13 | 4.35 | 4.1 | 2.9 | 2.39 | 0.5 | 0.5 | 0.5 | 0.5 | 0.5 | 0.5 | 0.5 | 23.51 |
| DAYS | | 34 | 28 | 28 | 28 | 35 | 28 | 35 | 28 | 35 | 28 | 35 | 28 | 35 | 28 | 35 | 28 | 31 | 366 |
| | | 104.82 | 83.02 | 294.32 | 506.77 | 950.19 | 1059.59 | 1445.01 | 922.75 | 499.04 | 157.59 | 98.12 | 7.94 | 61.29.16 | | | | | 6129.16 |

AVWS000078

AVEK West Feeder Deliveries 1976 through 2005

| AVE CA, POPPY PRES | LOCATION | FEEDER | | | | | | | | | | | | TOTAL | | | | |
|--------------------|---------------|----------|--------|--------|---------|---------|----------|---------|---------|-----------|---------|--------|--------|--------|--------|---------|---------|----------|
| | | JAN N, E | FEB | MAR | APR | MAY | WEST JUN | JUL | AUG | 2000 SEPT | OCT | NOV | DEC | | | | | |
| 14R | 14R | 0 | 0 | 0 | 0 | 0.5 | 0 | 0 | 0 | 0 | 0 | 0 | 0 | 0 | 0 | 0 | 0.5 | 1.5 |
| 160 W (HEALY) | 14R | 44.8 | 13.81 | 187.58 | 158.5 | 187.58 | 337.88 | 337.88 | 320.56 | 457.97 | 0 | 0 | 0 | 286.11 | 165.14 | 22.25 | 8.01 | 2332.96 |
| 140th W | 6.0R | 129.64 | 5.92 | 0 | 0 | 121.07 | 291.18 | 291.18 | 298.69 | 341.66 | 344.32 | 344.32 | 269.51 | 107.67 | 44.37 | 21.59 | 1975.42 | |
| 140th W | 6.0R | 0 | 0 | 0 | 2.07 | 93.33 | 95.31 | 95.31 | 196.33 | 52.26 | 52.26 | 52.26 | 3.59 | 0 | 0 | 0 | 542.33 | |
| 140th W | 6.6R | 0 | 0 | 0 | 11.84 | 289.11 | 299.72 | 299.72 | 240.07 | 289.49 | 192.37 | 159.25 | 125.95 | 0 | 0 | 34.91 | 1561.71 | |
| 140th W | 6.6R(So) | 0 | 0 | 0 | 48.74 | 102.75 | 32.7 | 124.48 | 214.41 | 73.37 | 0 | 0 | 0 | 0 | 0 | 0 | 596.45 | |
| 140th W | 7.0L | 28.12 | 0 | 70.71 | 151.8 | 102.7 | 132.1 | 114.82 | 132.1 | 102.7 | 90.86 | 118.58 | 1.67 | 70.16 | 26.94 | 0 | 908.46 | |
| 140th W | 7.5R | 0 | 0 | 49.15 | 209.8 | 175.4 | 179.1 | 242.33 | 198.91 | 178.75 | 104.68 | 0 | 0 | 0 | 0 | 0 | 1338.12 | |
| 140th W | 7.5R1 | 0 | 0 | 0 | 0 | 0 | 0 | 0 | 0 | 0 | 0 | 0 | 0 | 0 | 0 | 0 | 0 | |
| 140th W | 7.6L | 85.71 | 22.62 | 128.12 | 276.12 | 266.35 | 243.81 | 323.1 | 227.05 | 206.15 | 115.86 | 33.97 | 35.11 | 0 | 0 | 35.11 | 1963.97 | |
| 140th W | 9.0LA | 4.99 | 0 | 0 | 0 | 0 | 0 | 0 | 0 | 0 | 0 | 0 | 0 | 0 | 0 | 0 | 4.99 | |
| 140th W | 9.0LB (WEST) | 0 | 0 | 3.65 | 73.45 | 170.2 | 184 | 258.22 | 195 | 185.2 | 61.92 | 8.44 | 19.05 | 0 | 0 | 1159.13 | | |
| 140th W | 9.0LB EAST (| 28.05 | 85.39 | 94.37 | 173.16 | 156.45 | 243.59 | 309 | 137.63 | 115.04 | 68.77 | 8.44 | 0 | 0 | 0 | 0 | 1419.89 | |
| 140th W | 9.0LB So(VA) | 0 | 0 | 0 | 0 | 0 | 0 | 0 | 0 | 0 | 0 | 0 | 0 | 0 | 0 | 0 | 0 | |
| 140th W | 9.0LD | 0 | 0 | 0 | 0 | 0 | 0 | 0 | 0 | 0 | 0 | 0 | 0 | 0 | 0 | 0 | 0 | |
| 125th W | 10.5LA 1" | 0.5 | 0.5 | 0.5 | 0.62 | 0.57 | 0.86 | 1.13 | 0 | 0 | 0 | 0 | 0 | 0 | 0 | 0 | 0 | |
| 25th W (So) | 10.5LA 10" | 5.95 | 0.5 | 0.5 | 24.79 | 62.1 | 90.93 | 202.67 | 168.21 | 117.37 | 34.2 | 3.97 | 61.11 | 0 | 0 | 0.5 | 7.18 | |
| 125th W (M) | 10.5LA 12" | 6.05 | 15.3 | 0 | 77.45 | 131.87 | 146.93 | 223.86 | 184.76 | 122.88 | 78.95 | 42.64 | 50.57 | 0 | 0 | 61.11 | 771.8 | |
| 25th W (No) | 10.5LB 12" | 0 | 0 | 0.5 | 0 | 0 | 1.97 | 0 | 0 | 0 | 0 | 0 | 0 | 0 | 0 | 0 | 2.47 | |
| 120th W | 10.8L1 (N) | 0.5 | 0.5 | 0.5 | 212.39 | 83.29 | 98.65 | 113.37 | 81.84 | 100 | 75.13 | 7.14 | 16.49 | 0 | 0 | 0 | 789.8 | |
| 115th W | 11.6R1 | 0 | 0 | 0 | 0 | 0 | 0 | 0 | 0 | 0 | 0 | 0 | 0 | 0 | 0 | 0 | 0 | |
| 115th W | 11.6R2 | 0.5 | 0.5 | 0.5 | 37.8 | 9.07 | 98.65 | 209.6 | 165.15 | 100.92 | 31.37 | 54.33 | 0 | 0 | 0 | 0 | 708.39 | |
| 107th W | 12.3R1 | 0 | 0 | 0 | 21.41 | 73.66 | 66.64 | 70.51 | 104.21 | 89.53 | 68.78 | 0 | 12.87 | 0 | 0 | 0 | 591.55 | |
| 107th W | 12.3R2 | 0 | 0 | 0 | 2.01 | 42.25 | 87.59 | 249.19 | 190.5 | 83.7 | 0 | 0 | 0 | 0 | 0 | 0 | 655.24 | |
| 105th W | 12.5L | 78.5 | 140.99 | 196.61 | 353.5 | 407.69 | 344.93 | 419.35 | 325.85 | 313.85 | 205.87 | 0 | 0 | 0 | 0 | 0 | 2787.14 | |
| 100th W | 13.0R | 0 | 0 | 67.1 | 95.55 | 96.64 | 120.16 | 153.89 | 173.66 | 142.24 | 123.04 | 0 | 7.34 | 0 | 0 | 0 | 979.62 | |
| 90th W | 13.8R | 0 | 0 | 0 | 0 | 29.14 | 24.15 | 57.56 | 50.72 | 27.95 | 0 | 0 | 0 | 0 | 0 | 0 | 189.52 | |
| 90th W (NE) | 13.9L | 0 | 0 | 0 | 105.59 | 170.85 | 148.38 | 337.78 | 122.9 | 51.15 | 160.6 | 0 | 0 | 0 | 0 | 0 | 1097.25 | |
| 90th W (SE) | 14.9R1 (S) | 0 | 0 | 21.92 | 6.73 | 104.93 | 87.38 | 109.4 | 71.41 | 0 | 0 | 0 | 33.99 | 0 | 0 | 0 | 435.76 | |
| APTA 80th W | 14.9R2 (N) | 0 | 0 | 0 | 0 | 21.74 | 19.74 | 40.38 | 35.34 | 0 | 0 | 0 | 0 | 0 | 0 | 0 | 117.7 | |
| 80th W | 15.7L | 0 | 0 | 4.81 | 17.78 | 6.7 | 9.28 | 18.47 | 21.24 | 17.49 | 4.86 | 0 | 0 | 0 | 0 | 0 | 100.63 | |
| 72nd W | 16.5R | 16.73 | 0 | 147.85 | 89.5 | 203.07 | 328.79 | 46.27 | 112.93 | 46.27 | 32.16 | 0 | 0 | 0 | 0 | 0 | 960.57 | |
| 65th W | 16.7L | 0 | 0 | 25.25 | 31.19 | 192.65 | 159.56 | 174.61 | 107.46 | 18.3 | 0 | 0 | 0 | 0 | 0 | 0 | 725.75 | |
| 62nd W | 20.2L | 0 | 0 | 0 | 0 | 0 | 0 | 0 | 0 | 0 | 0 | 0 | 0 | 0 | 0 | 0 | 0 | |
| 42nd W | 20.2L1 (BISC) | 6.75 | 67.85 | 21.79 | 49.38 | 94.61 | 144.06 | 86.26 | 0 | 0 | 0 | 0 | 0 | 0 | 0 | 0 | 470.7 | |
| 35th W | 21.7L | 0.57 | 0.5 | 0.58 | 2.3 | 2.69 | 4.59 | 5.49 | 3.61 | 3.05 | 2.32 | 0.5 | 0.5 | 0 | 0 | 0 | 26.7 | |
| DAYS | | 33 | 29 | 28 | 35 | 28 | 35 | 28 | 28 | 28 | 35 | 28 | 28 | 32 | 367 | 32 | 367 | 26303.96 |
| | | 437.36 | 354.38 | 913.37 | 2930.32 | 3301.48 | 3960.32 | 5556.17 | 3799.19 | 2846.54 | 1588.24 | 297.11 | 329.48 | 0 | 0 | 0 | 0 | 26303.96 |

AVEK West Feeder Deliveries 1976 through 2005

| | JAN | FEB | MAR | APR | MAY | NORTH | FEEDER | 2004 | SEPT | OCT | NOV | DEC | TOTAL | 2004 |
|------------------------|--------|--------|--------|--------|--------|--------|---------|--------|--------|--------|--------|--------|---------|--------|
| | N/E | | | | | JUN | JUL | AUG | | | | | | 0 |
| 34th W & FELSTIE | 34.83 | 0 | 81.26 | 54.08 | 28.08 | 62.66 | 112.31 | 145.56 | 135.13 | 72.47 | 26.17 | 66.77 | 0 | 819.32 |
| 25th W & FELSTIE | 0 | 14.46 | 0 | 16.69 | 0 | 0 | 0 | 0 | 0 | 0 | 0 | 0 | 0 | 0 |
| SIERRA HWY | 0 | 0 | 10.51 | 0 | 21.79 | 36.32 | 33.31 | 43.7 | 33.97 | 30.05 | 25.16 | 13.46 | 12.22 | 291.64 |
| MPS | 0 | 0 | 0 | 0 | 0 | 3.77 | 11.48 | 13.63 | 10.49 | 2.3 | 0.44 | -0.61 | -0.21 | 41.29 |
| FWY 14 (86500002) | 1.77 | 0.91 | 0.91 | 1.26 | 1.65 | 1.91 | 0.98 | 1.4 | 1.29 | 0.88 | 0.89 | 0.61 | 0.71 | 14.26 |
| ROSAMOND BLVD & HWY 58 | 129.47 | 66.89 | 195.53 | 201.98 | 207.48 | 193.58 | 248.85 | 173.01 | 145.98 | 130.56 | 108.51 | 85.54 | 1887.38 | 6 |
| NFZ | 0.5 | 0.5 | 0.5 | 0.5 | 0.5 | 0.5 | 0.5 | 0.5 | 0.5 | 0.5 | 0.5 | 0.5 | 0.5 | 6 |
| CLAY MINE RD | 0.54 | 0.51 | 0.51 | 0.5 | 4.01 | 3.26 | 1.67 | 1.42 | 2.08 | 1.85 | 0.5 | 1.17 | 0.5 | 18.01 |
| BORAX RD | 2.04 | 2.42 | 2.42 | 0.77 | 7.17 | 32.75 | 20.32 | 23.23 | 19.06 | 19.62 | 27.1 | 4.73 | 1.35 | 160.56 |
| BORAX RD | 39.54 | 24.42 | 81.15 | 86.92 | 158.24 | 166.28 | 206.23 | 156.11 | 156.53 | 102.65 | 44.31 | 28.76 | 1251.14 | 0 |
| BORAX RD | 143.06 | 128.07 | 112.01 | 134.87 | 169.92 | 161.68 | 208.72 | 178.1 | 157.66 | 162.85 | 127.53 | 143.86 | 1828.33 | 0 |
| BORON PS (METER HEAD) | 21.83 | 18.69 | 28.51 | 37.79 | 55.38 | 38.65 | 48.53 | 30.79 | 25.82 | 25.82 | 8.46 | 9.22 | 349.47 | 0 |
| SOUTH OF BORON | 9.94 | 5.09 | 0.5 | 0.5 | 0.54 | 5.91 | 17.63 | 16.88 | 19.63 | 9.63 | 7 | 4.92 | 98.17 | 0 |
| CAL CITY BLVD | 0.5 | 0.5 | 9.95 | 33.03 | 168.95 | 139.57 | 171.15 | 142.02 | 95.85 | 23.14 | 0 | 16.74 | 801.4 | 0 |
| DAYS | 398.48 | 339.77 | 501.45 | 558.29 | 901.68 | 886.24 | 1130.55 | 899.43 | 729.14 | 535.39 | 382.44 | 304.11 | 7566.97 | 366 |
| | 0 | 0 | 0 | 0 | 0 | 0 | 0 | 0 | 0 | 0 | 0 | 0 | 0 | 0 |

AVEK West Feeder Deliveries 1976 through 2005

| | 2000 | | | | | | | | | | | | TOTAL | |
|------------------------|--------|--------|--------|--------|--------|--------------|--------|---------|---------|--------|--------|--------|--------|---------|
| | JAN | FEB | MAR | APR | MAY | NORTH JUN | JUL | AUG | SEPT | OCT | NOV | DEC | | |
| 34th W & FELSITE | 39.13 | 0 | 5.86 | 2.74 | 75.71 | 110.86 | 176.93 | 210.36 | 252.87 | 196.44 | 161.29 | 56.18 | 37.38 | 1325.75 |
| 25th W & FELSITE | 0 | 0 | 0 | 0 | 0 | 0 | 0 | 0 | 0 | 0 | 0 | 0 | 0 | 0 |
| SIERRA HWY | 13.97 | 11.34 | 14.63 | 14.63 | 29.58 | 29.64 | 36.22 | 46.56 | 34.55 | 29.47 | 27.96 | 14.57 | 16.3 | 304.79 |
| MFS | 1.84 | 0.31 | 0.18 | 0.18 | 4.03 | 8.17 | 11.91 | 24.81 | 31.8 | 12.91 | 10.97 | 11.7 | 0.95 | 119.38 |
| FWY 14 (86500002) | 0.5 | 0.54 | 0.69 | 0.69 | 1.19 | 0.72 | 1.05 | 0.92 | 1.06 | 0.58 | 0.5 | 0.78 | 1.02 | 9.55 |
| SILVER QUEEN RD | 0 | 0 | 0 | 0 | 0 | 0 | 0 | 0 | 0 | 0 | 0 | 0 | 0 | 0 |
| ROSAMOND BLVD & HWY 58 | 142.67 | 137.16 | 208.97 | 208.97 | 283.87 | 243.8 | 304.97 | 382.39 | 280.22 | 264.12 | 212.29 | 159.73 | 103.84 | 2724.03 |
| NFZ | 0.5 | 0.5 | 0.5 | 0.5 | 0.5 | 0.5 | 0.5 | 0.5 | 0.5 | 0.5 | 0.5 | 0.5 | 0.5 | 6 |
| CLAY MINE RD | 1.59 | 0.5 | 2.27 | 0.5 | 0.5 | 0.5 | 7.75 | 4.93 | 0.5 | 0.5 | 0.66 | 1.11 | 1.74 | 22.55 |
| BORAX RD | 0.5 | 0.5 | 0.5 | 0.5 | 0.62 | 0.75 | 1.92 | 2.66 | 2.17 | 1.61 | 2.12 | 1.02 | 0.75 | 15.12 |
| BORAX RD | 72.77 | 62.2 | 90.96 | 90.96 | 147.11 | 124.03 | 142.68 | 209 | 161.87 | 141.3 | 108.05 | 58.21 | 43.03 | 1361.21 |
| BORAX RD | 184.34 | 158.36 | 169.91 | 169.91 | 200.19 | 172.1 | 144.81 | 173.8 | 155.37 | 134.3 | 161.11 | 146.81 | 151.17 | 1952.27 |
| BORON PS (METER HEAD) | 8.26 | 1.47 | 3.8 | 3.8 | 21.04 | 33.81 | 41.92 | 60.31 | 47.38 | 34.84 | 35.57 | 18.33 | 21.71 | 328.44 |
| SOUTH OF BORON | 15.1 | 18.95 | 21.51 | 21.51 | 27.49 | 21.73 | 31.61 | 37.14 | 28.07 | 31.11 | 31.68 | 22.07 | 21.59 | 308.05 |
| CAL CITY BLVD | 3.02 | 2.82 | 3.14 | 3.14 | 2.82 | 19.7 | 71.4 | 83.99 | 66.38 | 70 | 3.5 | 4.16 | 0.5 | 331.43 |
| DAYS | 484.19 | 33 | 29 | 28 | 35 | 28 | 28 | 35 | 28 | 28 | 35 | 28 | 32 | 366 |
| TOTAL | 484.19 | 400.51 | 519.8 | 519.8 | 794.65 | 766.31 | 973.67 | 1237.17 | 1062.74 | 917.68 | 756.2 | 495.17 | 400.48 | 8808.57 |

EXHIBIT G

AVEK Customer Water Use Report - 2012

11/27/2012

WEST FEEDER 2012 AVEK METER READINGS

| NAME | LOCATION | 2005 | 2006 | 2007 | 2008 | 2009 | 2010 | 2011 | 2012 Est | TOTAL |
|----------------------|-------------------------|---------|---------|---------|-------|-------|-------|---------|--------------|-----------------|
| Marionens Farms | 140th W 7.8L | 0.0 | 18.7 | 6.0 | 5.0 | 3.0 | 4.0 | 2.5 | 1.5 | 42.7 |
| AV Water Storage LLC | 140th W 8.9L | | | | | | | 3,870.7 | 2,637.8 | 6,508.5 |
| | 140th W 9.0LB | 1,770.0 | 2,170.4 | 1,504.0 | 0.0 | 0.0 | 598.1 | 4,730.9 | 0.0 | 10,773.4 |
| | 141st W 9.0LC | 0.0 | 0.0 | 0.0 | 0.0 | 0.0 | 0.0 | 2,809.0 | 1.0 | 2,810.1 |
| | 140th W 9.0LD | 0.0 | 0.0 | 0.5 | 0.5 | 0.0 | 0.5 | 2,593.5 | 1.5 | 2,596.5 |
| Grimmway Farms | 125th W (So) 10.5LA 10" | 608.6 | 805.0 | 834.7 | 802.9 | 290.5 | 145.8 | 745.3 | 676.0 | 4,900.5 |
| | 125th W (M) 10.5LA1 12" | 631.4 | 1,105.6 | 829.1 | 796.7 | 64.7 | 529.7 | 762.4 | 943.4 | 5,654.0 |
| | 125th W (No) 10.5LB 12" | 382.9 | 553.4 | 1,867.4 | 130.2 | 156.1 | 61.8 | 819.0 | 564.4 | 4,924.2 |
| Scott Harter | 130th W 10.8L | 1.5 | 34.4 | 595.1 | 0.5 | 0.0 | 0.0 | 0.5 | 0.0 | 632.0 |
| | | | | | | | | | TOTAL | 38,651.8 |

AVWS000083

1
2
3
4
5
6
7
8
9
10
11
12
13
14
15
16
17
18
19
20
21
22
23
24
25
26
27
28

PROOF OF SERVICE

I, Carol Bracken, certify and declare:

I am over the age of 18 years and not a party to this action. My business address is: HERUM \ CRABTREE, 5757 Pacific Avenue, Suite 222, Stockton, California 95207. On the date set forth below, I served the following document(s):

ANTELOPE VALLEY WATER STORAGE LLC'S RESPONSE TO AVEK'S MOTION IN LIMINE RE ADMISSION OF EVIDENCE AND ARGUMENT RELATING TO RETURN FLOWS

[X] BY ELECTRONIC SERVICE. By posting the document(s) listed above to the Santa Clara Superior Court website regarding the Antelope Valley Groundwater matter (Judicial Council Coordination Proceeding No. 4408, Santa Clara Case No. 1-05-CV-049053) pursuant to the Court's Clarification Order.

I declare under penalty of perjury under the laws of the State of California that the foregoing is true and correct.

Dated: May 3, 2013

 /s/ Carol Bracken
CAROL BRACKEN