

Subareas

NDVI

Value

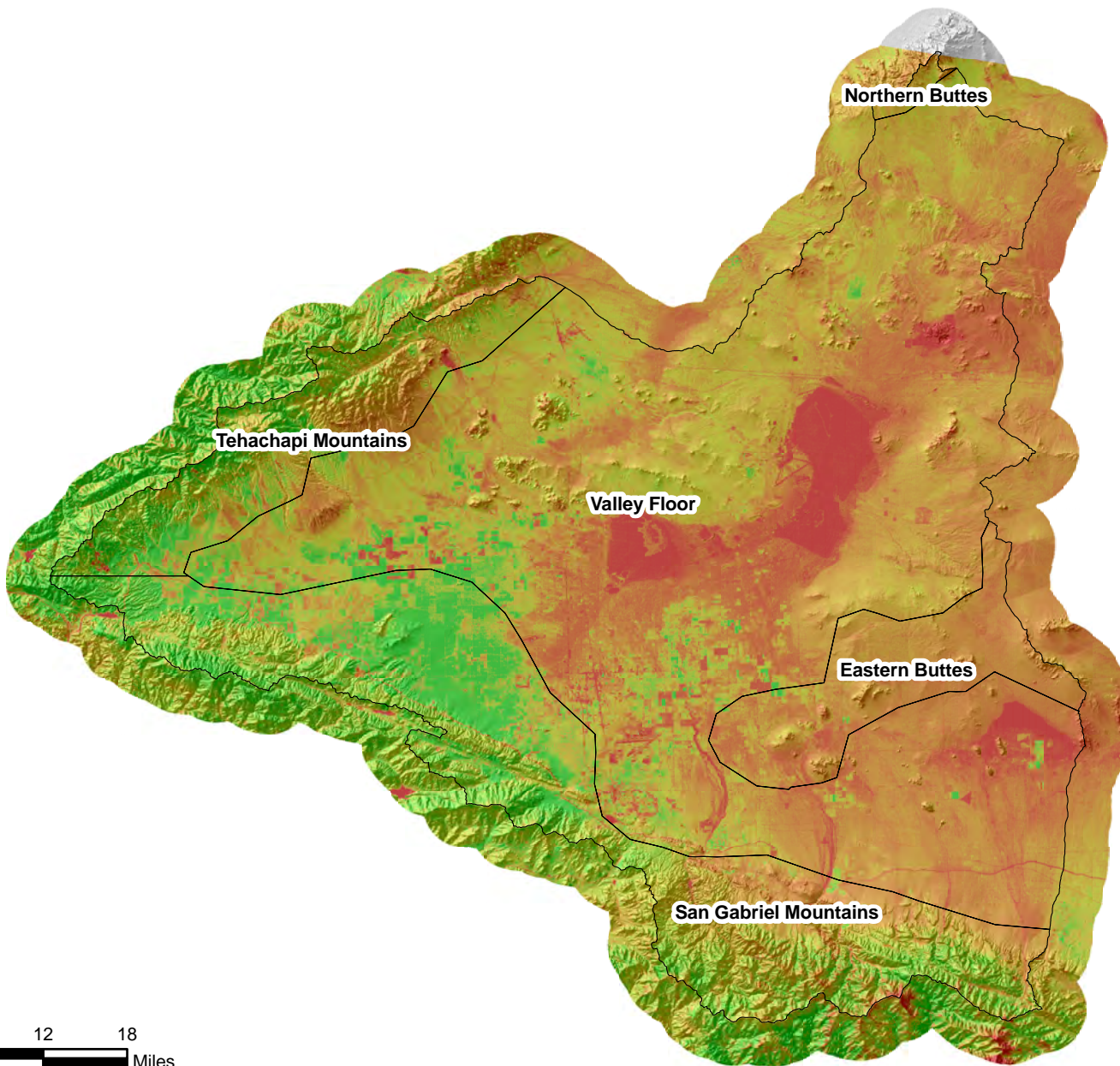
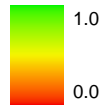


Figure C.21c Geographic Distribution of NDVI* for February 1986

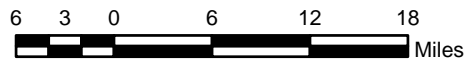
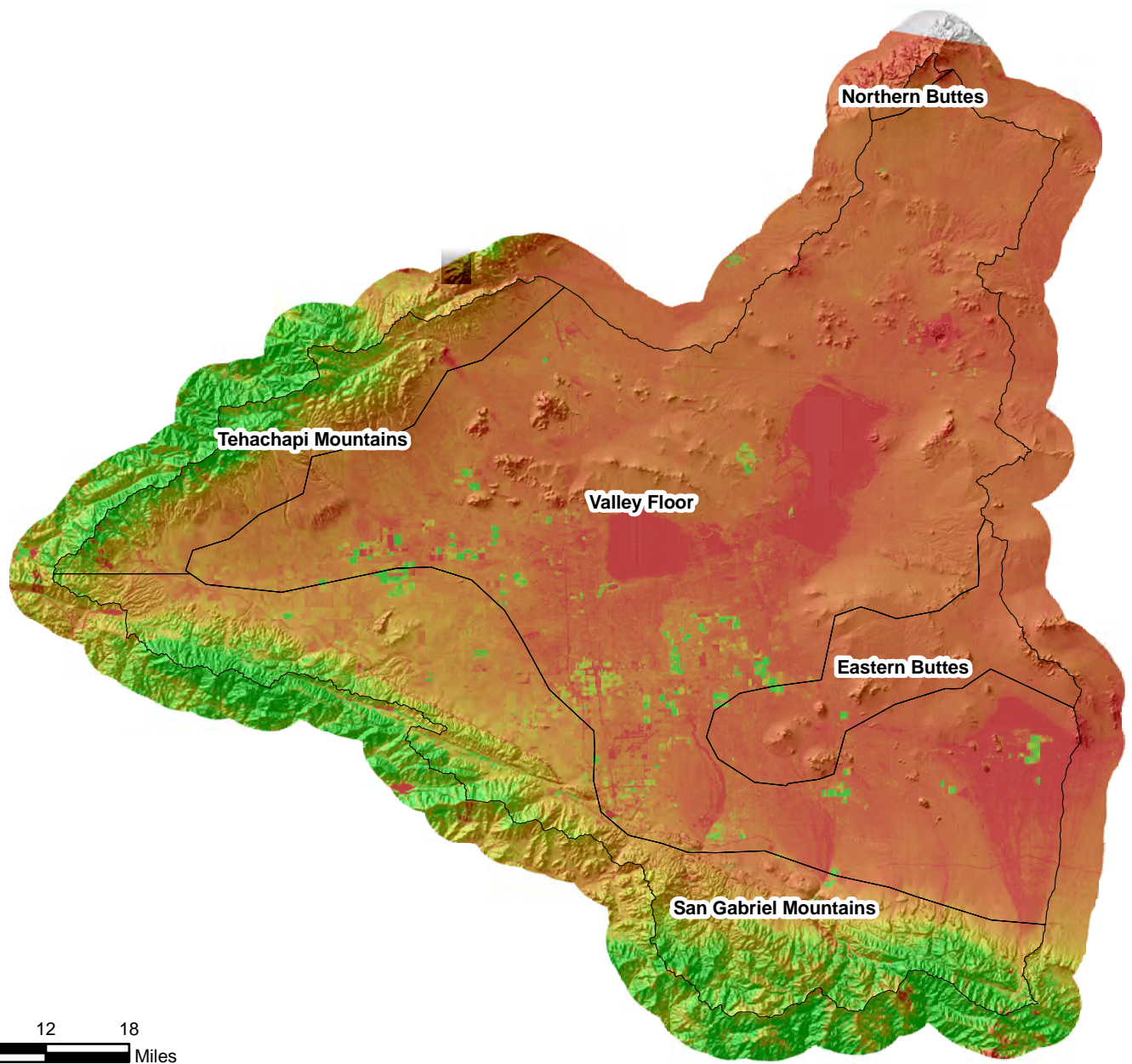
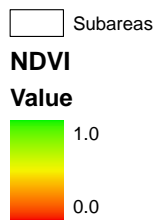


Figure C.21d Geographic Distribution of NDVI* for June 1986

Subareas

NDVI

Value

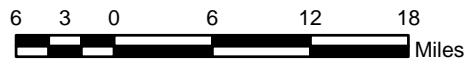
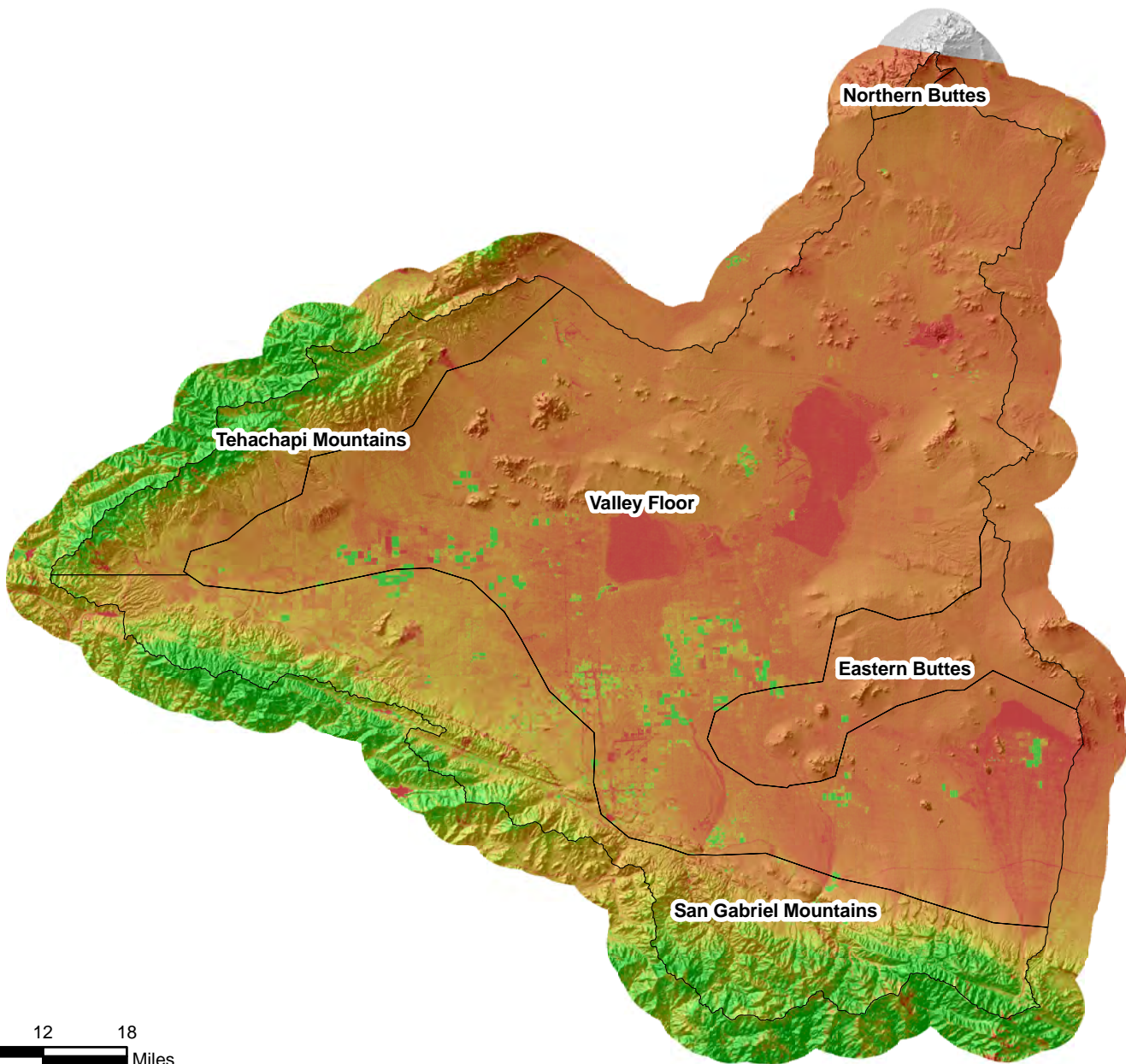
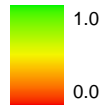


Figure C.21e Geographic Distribution of NDVI* for August 1986

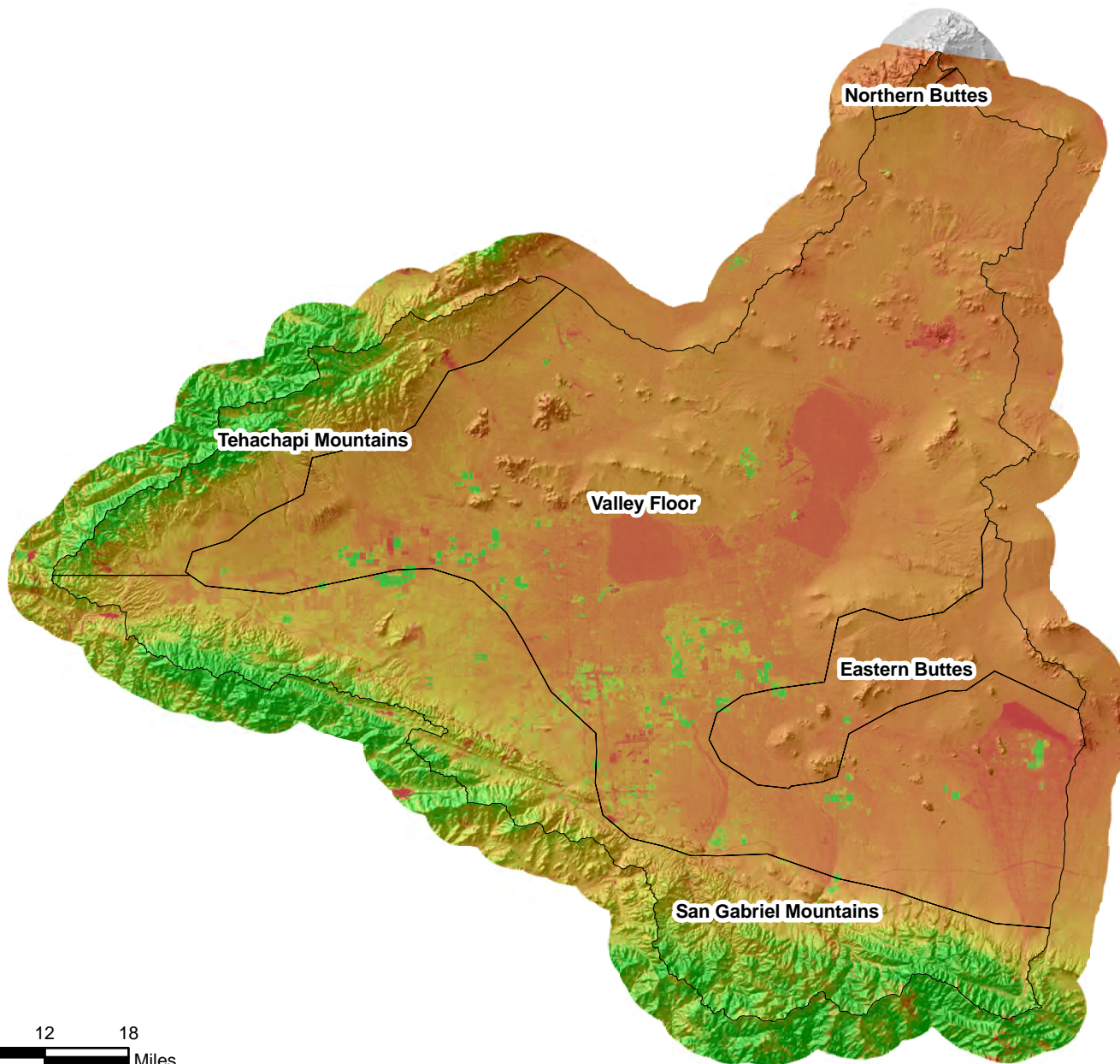
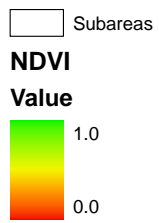


Figure C.21f Geographic Distribution of NDVI* for September 1986

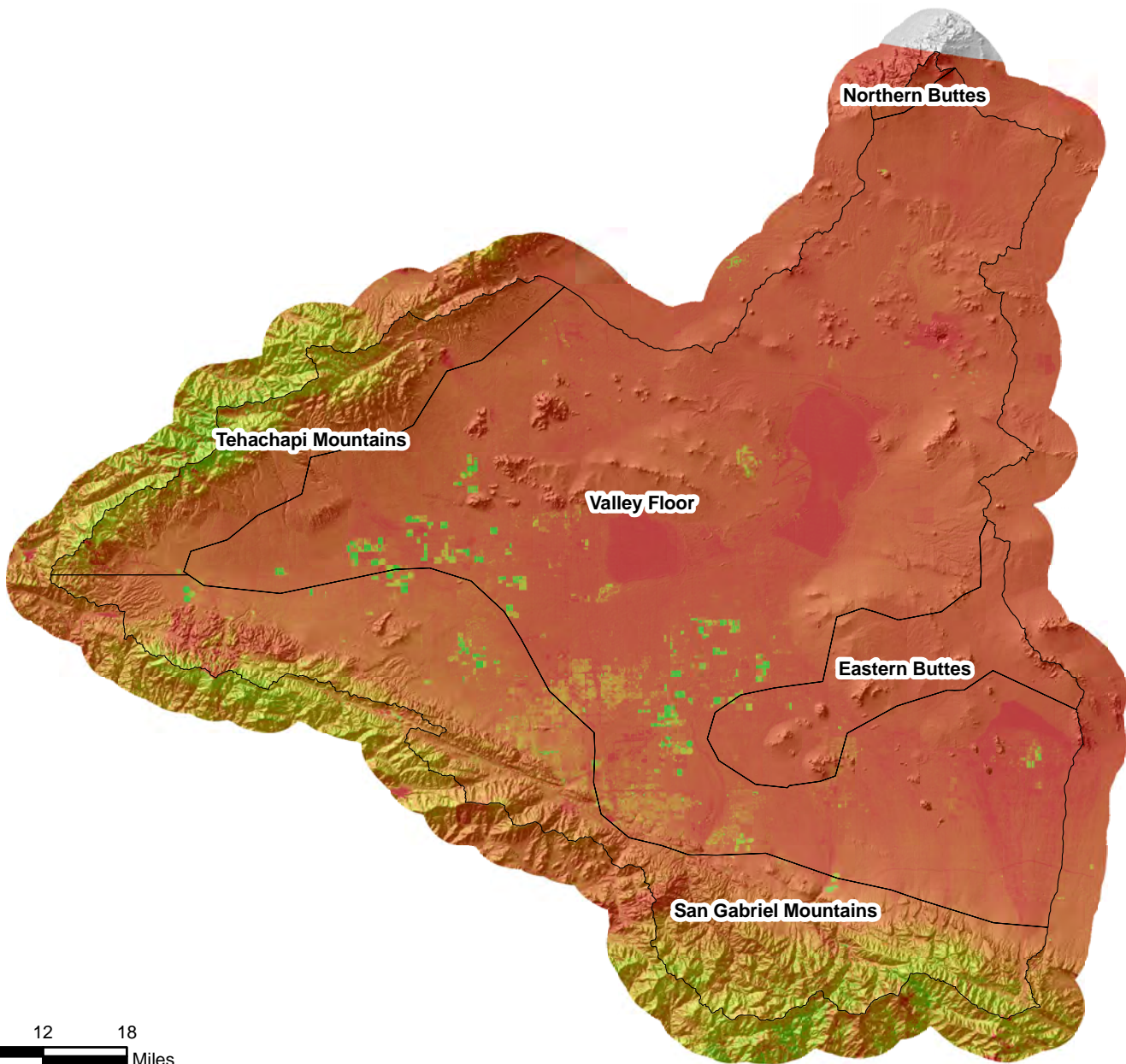
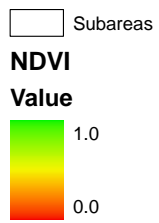


Figure C.21g Geographic Distribution of NDVI* for September 2004

Subareas

NDVI

Value

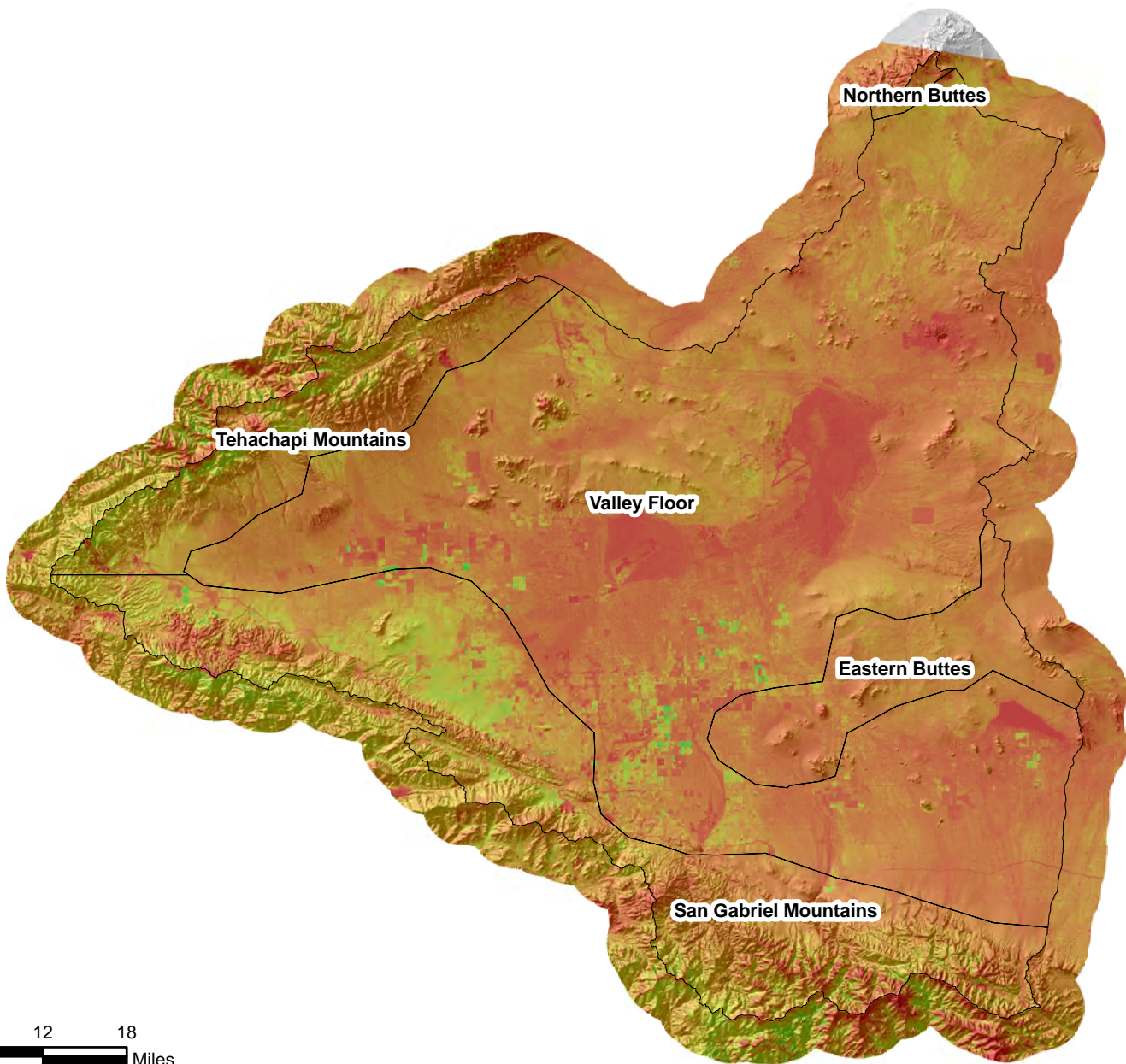
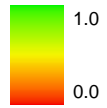


Figure C.21h Geographic Distribution of NDVI* for November 2004

Subareas

NDVI

Value

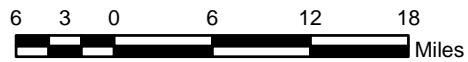
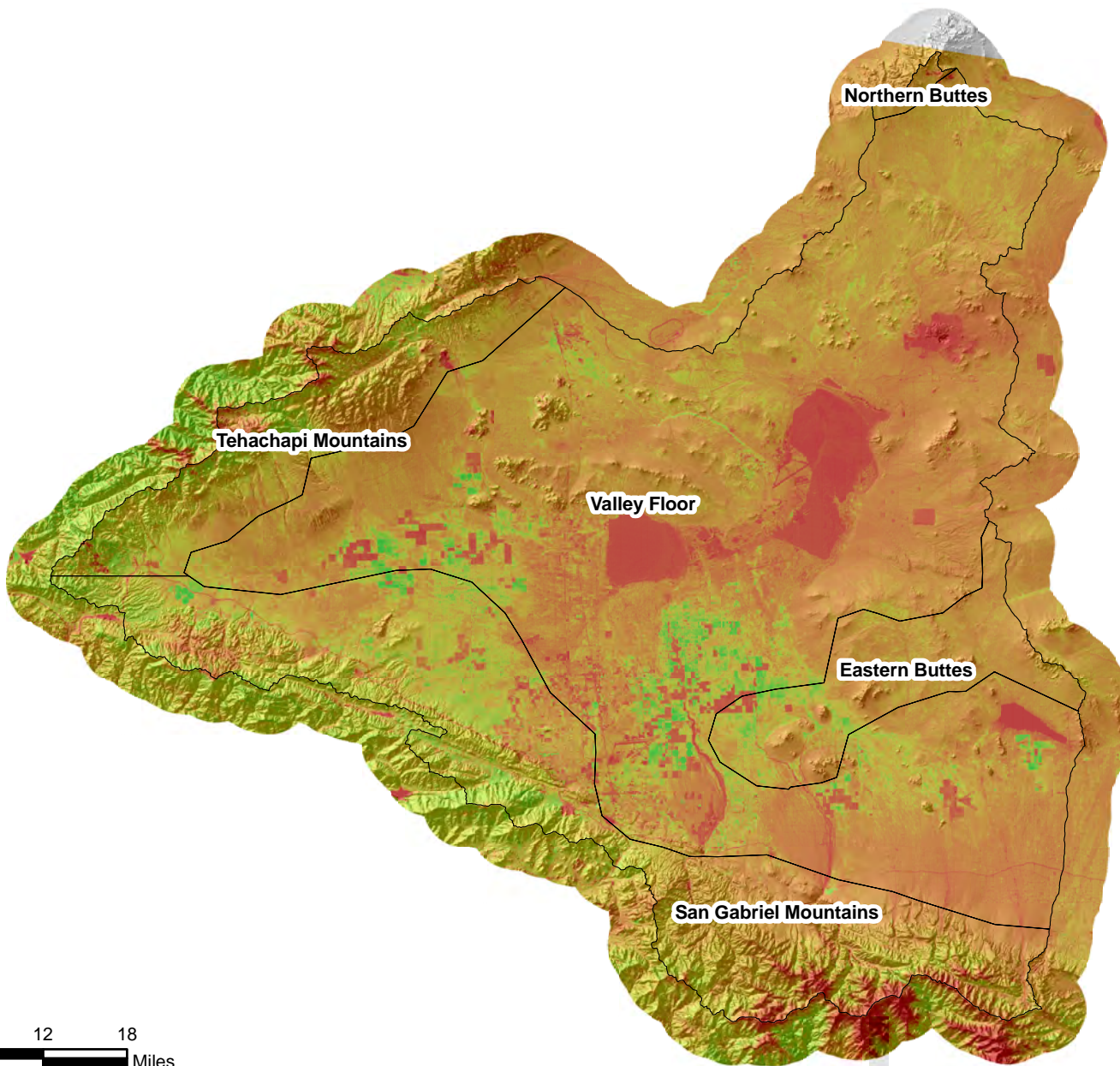
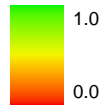


Figure C.21i Geographic Distribution of NDVI* for April 2005

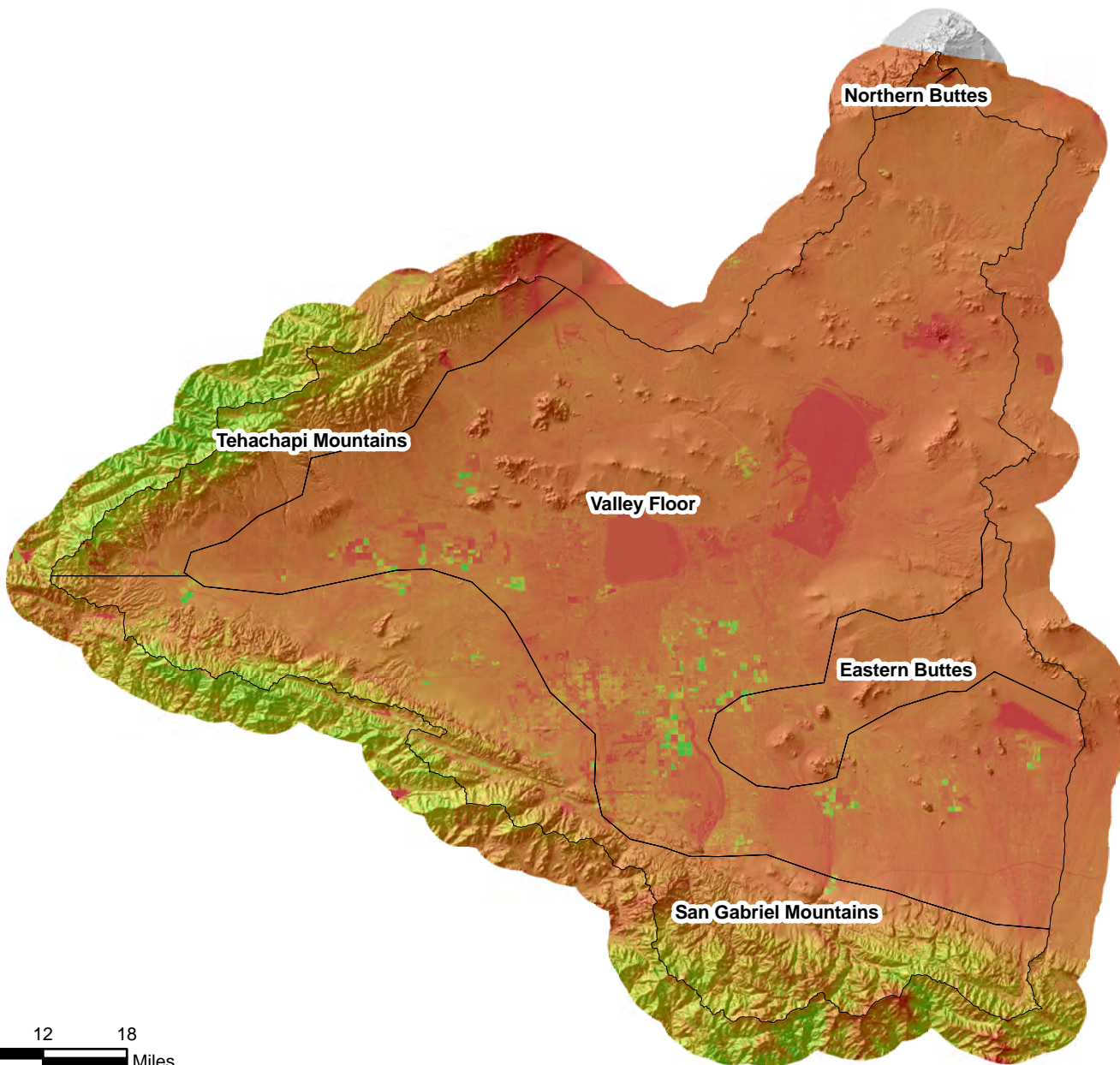
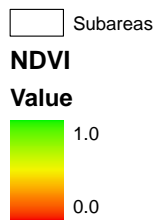


Figure C.21j Geographic Distribution of NDVI* for June 2005

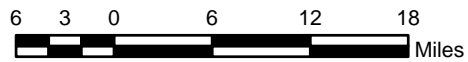
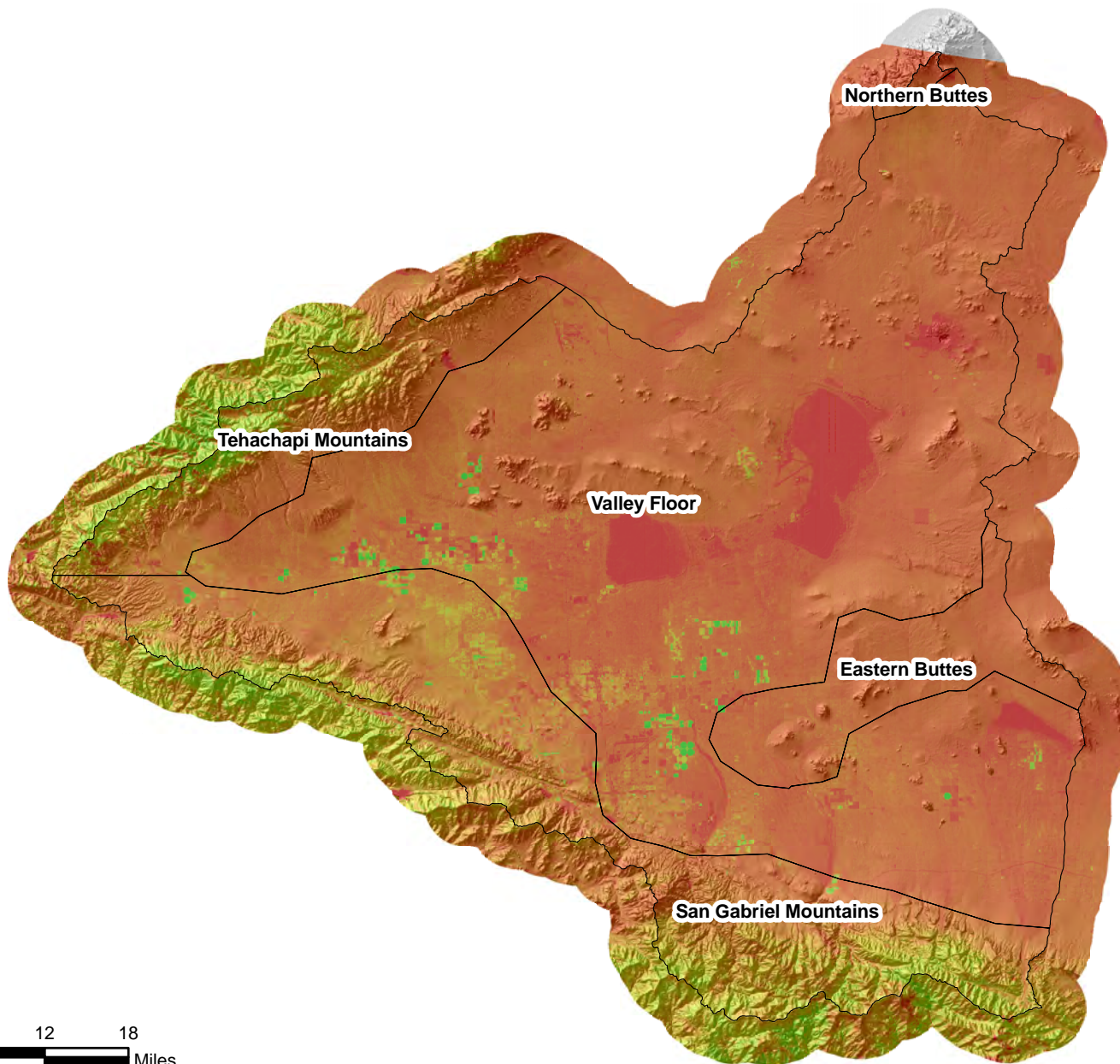
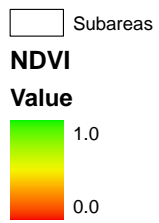


Figure C.21k Geographic Distribution of NDVI* for September 2005

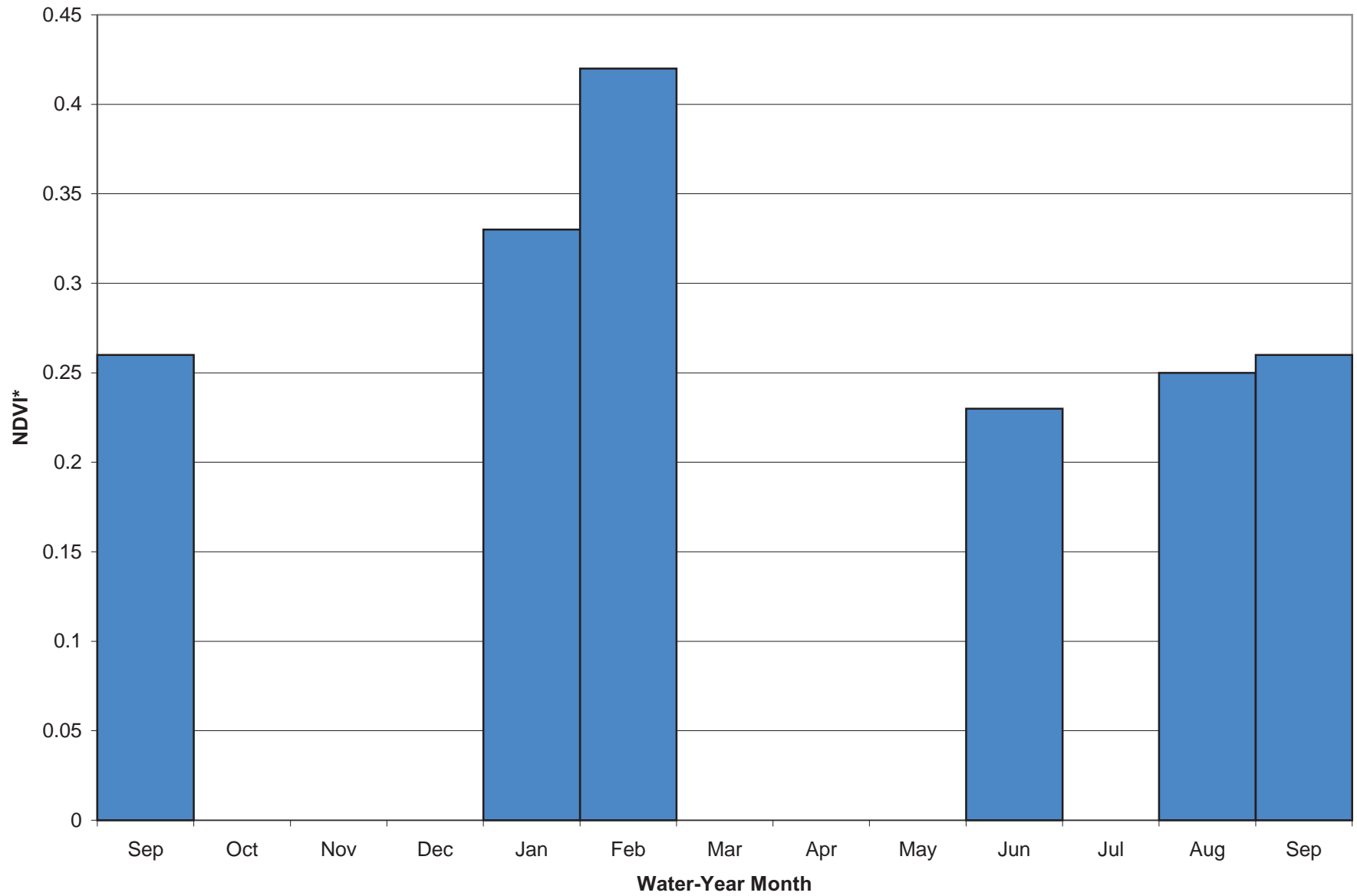


Figure C.22a Water Year 1986 NDVI* for San Gabriel Mountains

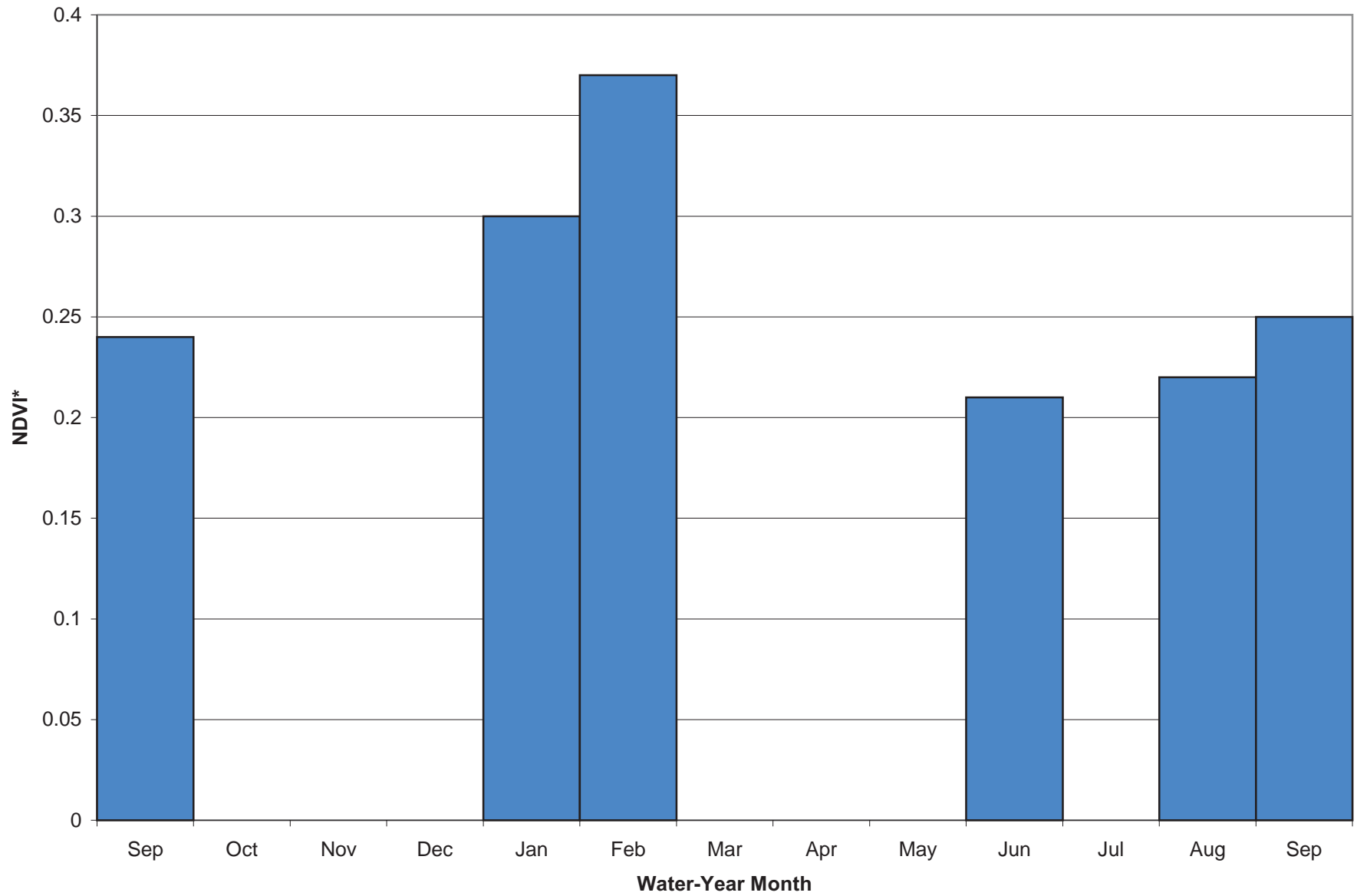


Figure C.22b Water Year 1986 NDVI* for Tehachapi Mountains

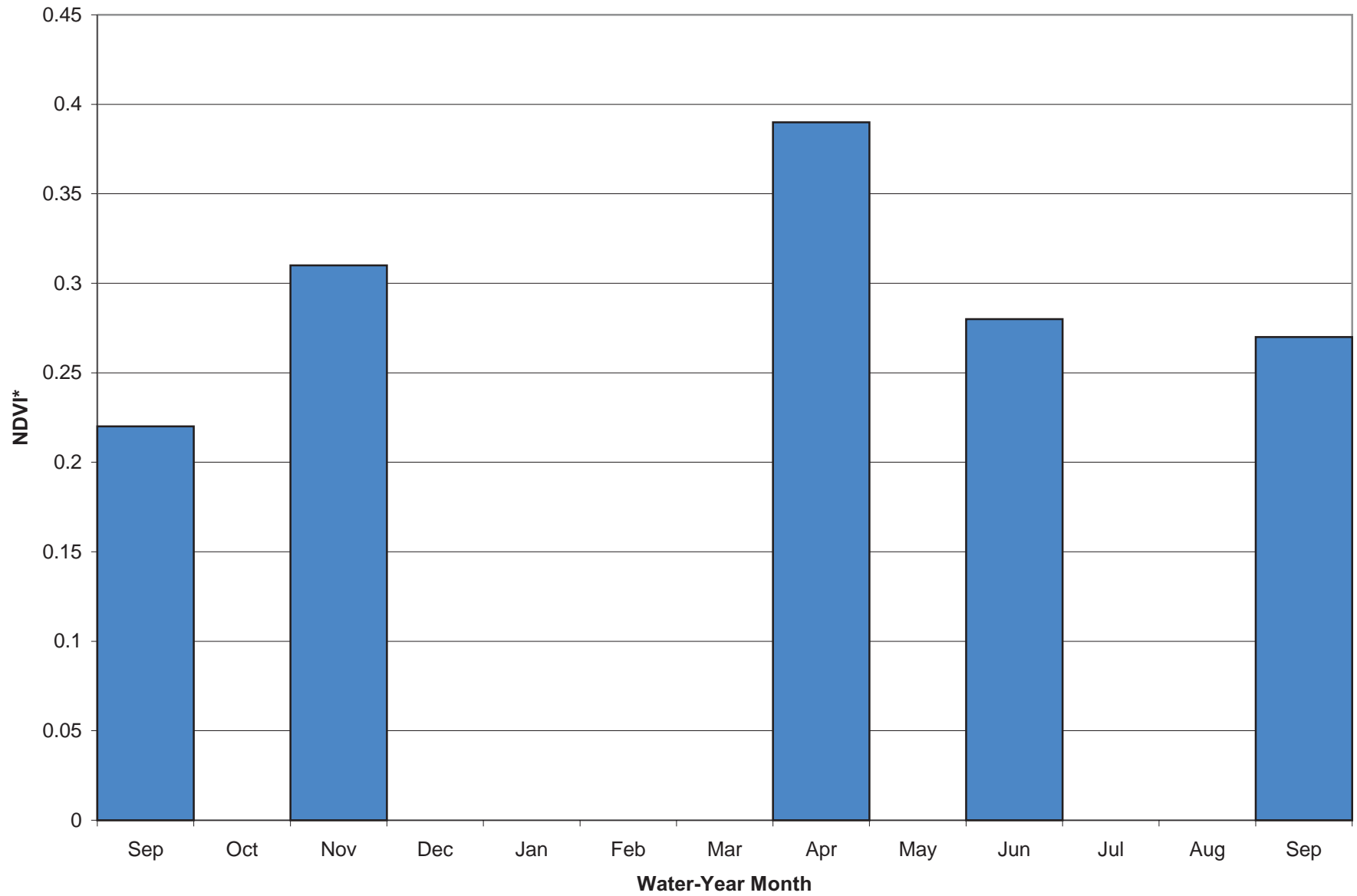


Figure C.23a Water Year 2005 NDVI* for San Gabriel Mountains

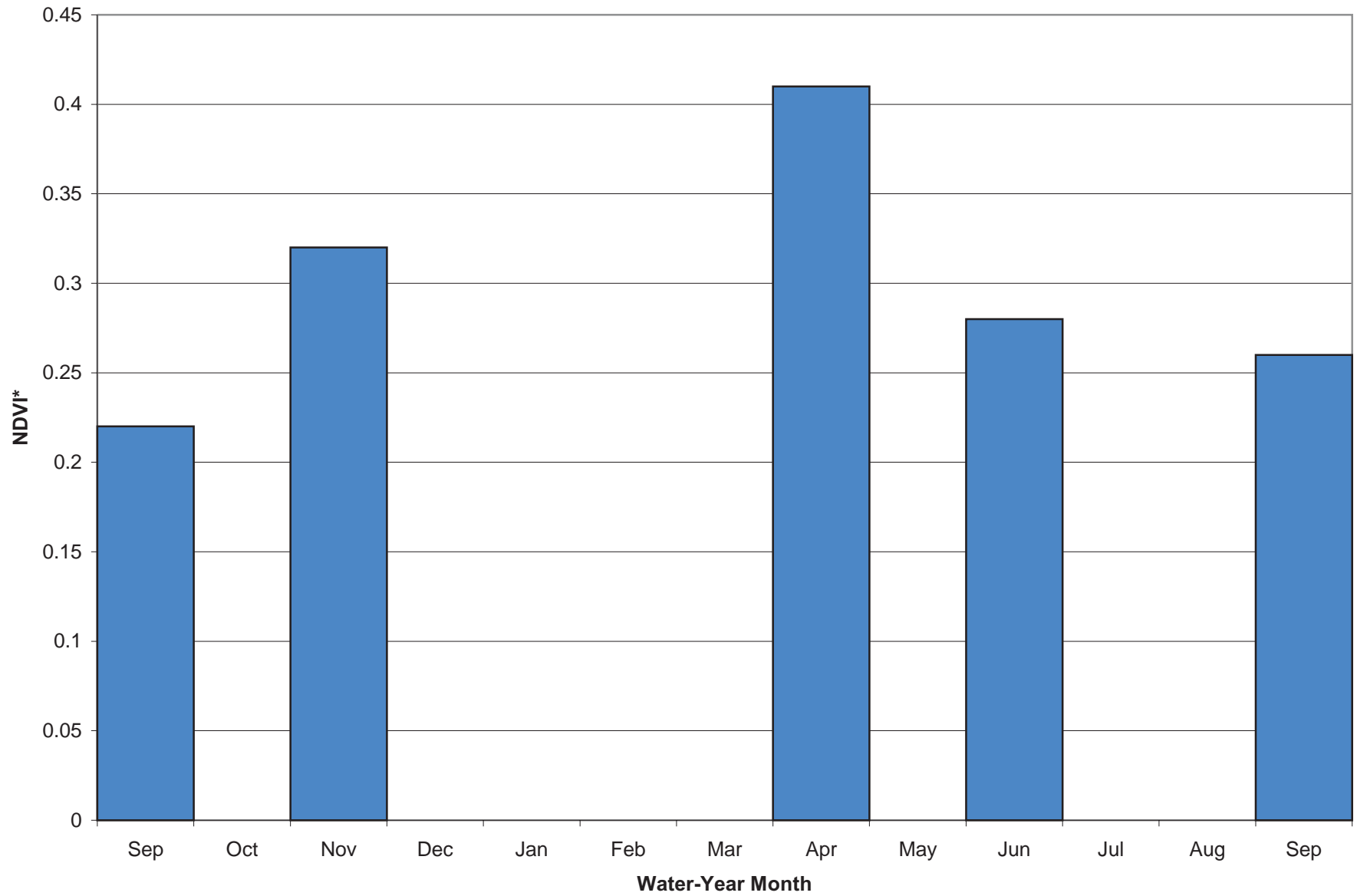


Figure C.23b Water Year 2005 NDVI* for Tehachapi Mountains

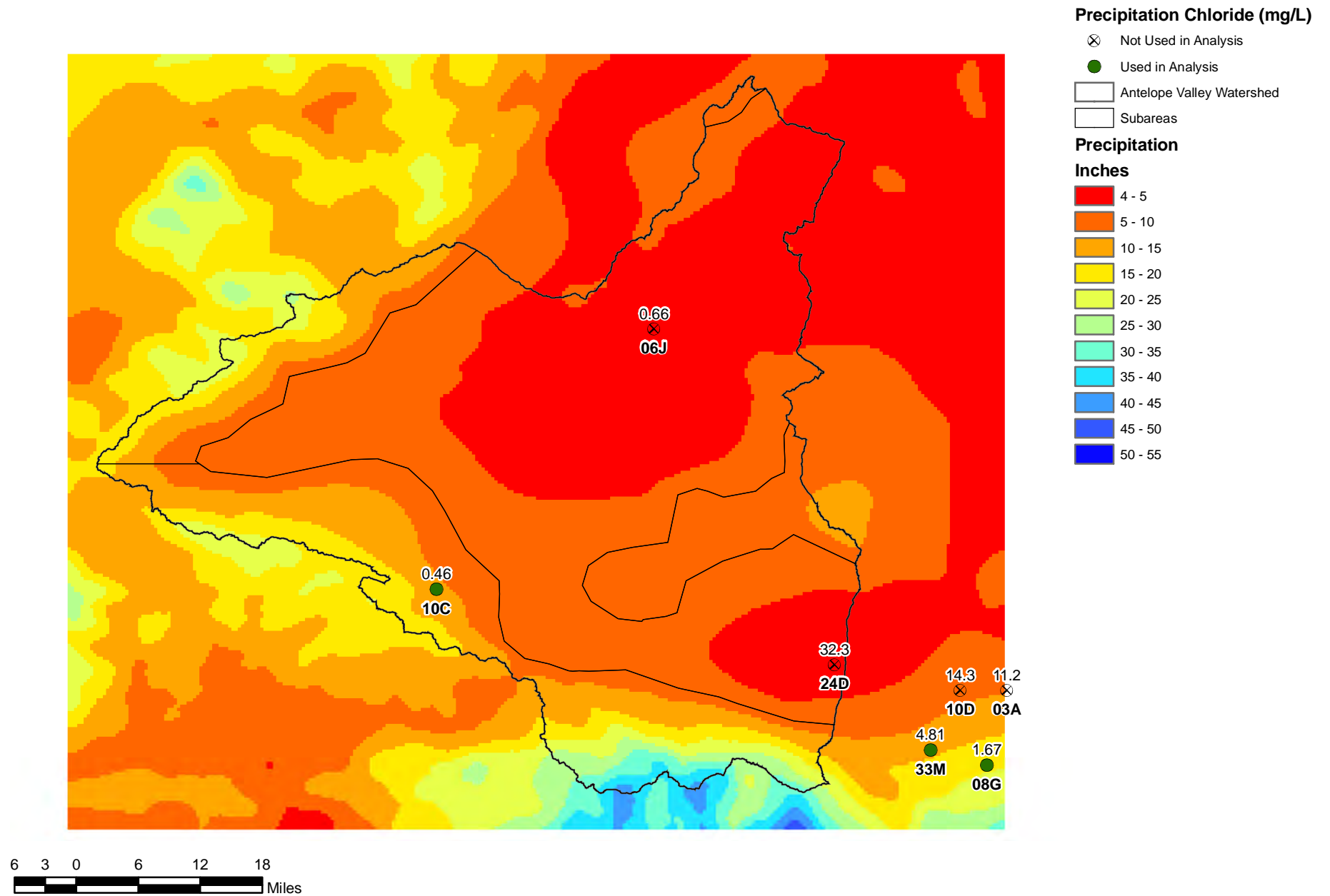


Figure C.24 Location of Stations Measuring Precipitation Chloride

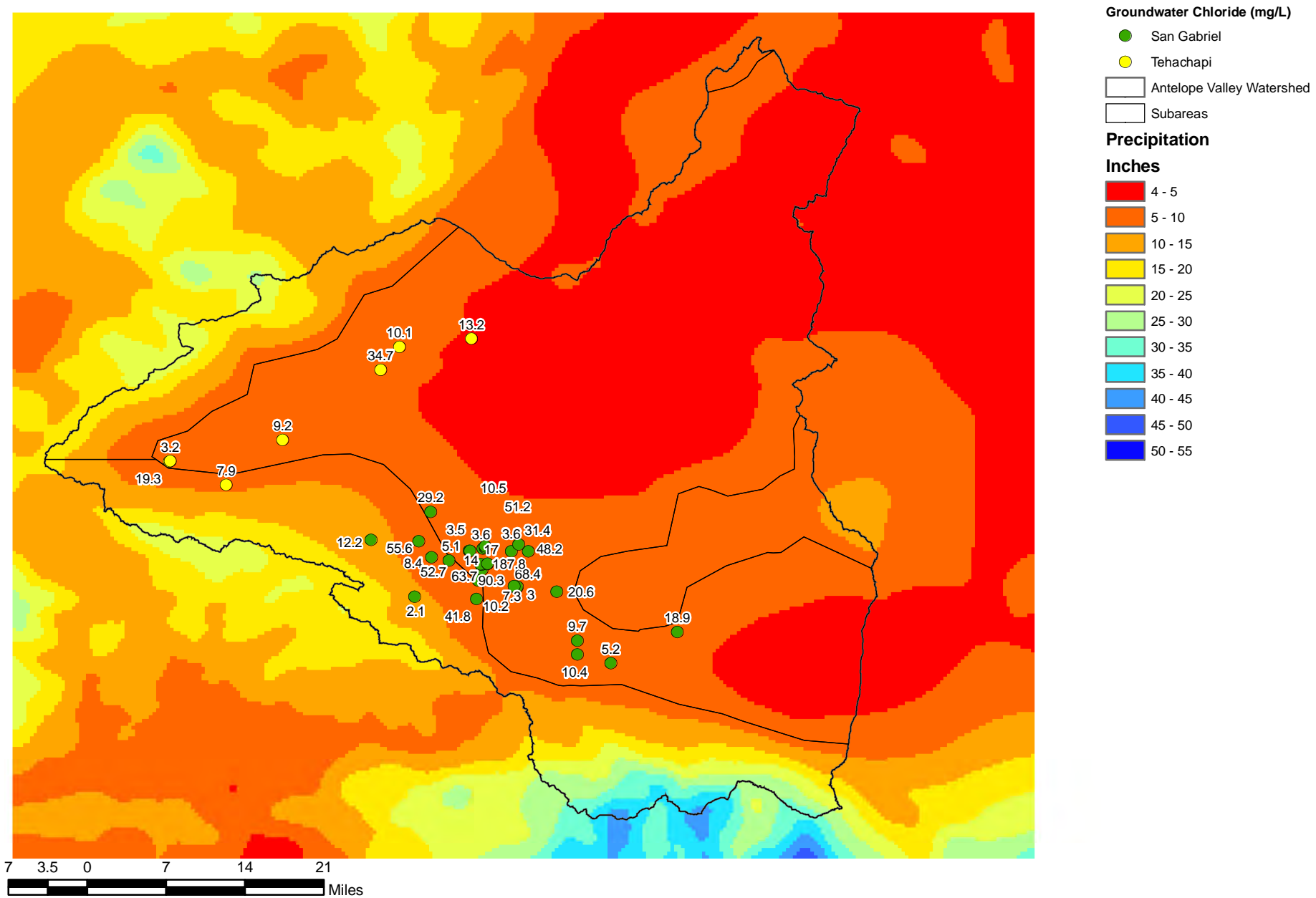


Figure C.25 Location of Stations Measuring Groundwater Chloride