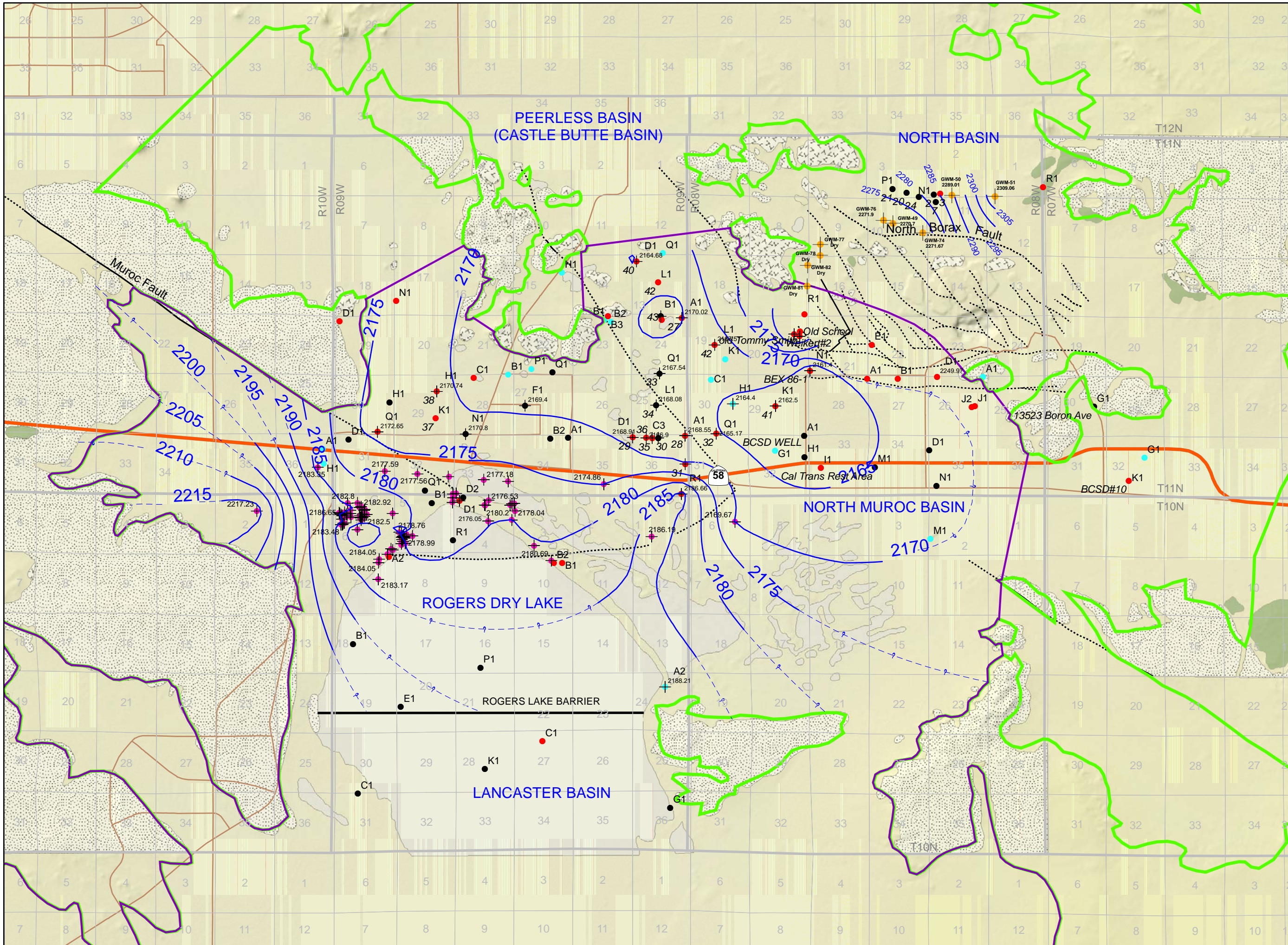


EXHIBIT A – MAP



Map Legend

- Potentiometric Surface Data Well
- Potentiometric Surface C.I. = 5'
- Inferred Potentiometric Surface
- Proposed Antelope Valley GW Basin Boundary
- B118 Antelope Valley GW Basin Boundary
- Limited Access Highway
- Highway
- Major Road

GEOLOGY

- Consolidated Rocks
- Fanglomerate
- Playa Deposits
- Saddleback Basalt
- Waterbearing Sediments

FAULTS

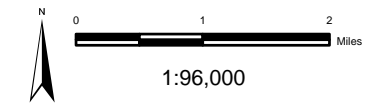
- Estimated Location
- Surface or known location
- Subsurface Groundwater Basin Boundary

PUMPING WELL STATUS

- ACTIVE (Pumping) WELL
- OTHER WELL (Unknown Status, Dry, or Abandoned)
- UNUSED (Not Pumping Well)
- Edwards AFB Wells
- Rio Tinto Monitoring Well, Arkose

This map was created using GIS shape files available through agencies of the state of California. Transportation layers were obtained from [www.gis.ca.gov/data/ep]. These files are typically in a Teale Albers Projection. The original DWR groundwater basin file was obtained at [www.groundwater.ca.gov/bulletin118/basin_maps/index.cfm] in a UTM 10, NAD 27 Projection. The shapefile has been reprojected into a custom projection.

This map was compiled by EDE Consultants on behalf of Rio Tinto Minerals, Boron Operations



DATE: 12/05/06	BY: [Signature]	APPROVED: [Signature]
COMPUTER GRID I.D.		
FILE: [Path]		
DATE: 12/05/06		
APPROVALS:		
North Muroc Basin Potentiometric Contour Map 2006		
Rio Tinto Minerals - Boron Operations 14486 Boron Rd., Boron, California 93516-2000 Scale: 1"=4000' Contour: Potentiometric Sheet 1 of 1 Contour Map 2006 Revision3		