

# **EXHIBIT 1**

LAW OFFICES OF  
BEST, BEST & KRIEGER LLP  
3760 UNIVERSITY AVENUE, SUITE 400  
P.O. BOX 1028  
RIVERSIDE, CALIFORNIA 92502

1  
2  
3  
4  
5  
6  
7  
8  
9  
10  
11  
12  
13  
14  
15  
16  
17  
18  
19  
20  
21  
22  
23  
24  
25  
26  
27  
28

**EXHIBIT "A"**

**Property APNs**

**Godde:**

<b>APNs Old:</b>	<b>APNs New:</b>
3258-001-004	3258-001-900
3258-001-005	3258-001-901
3258-001-039	3258-001-902
3258-010-069	3258-010-900
3258-010-068	3258-010-901
3258-010-001	3258-010-902
3261-001-005	3261-001-900
3261-001-007	3261-001-901
3261-009-001	3261-009-900

**Calandri:**

<b>APNs:</b>	<b>APNs Con't:</b>
359-032-38	374-200-45
374-011-13	374-200-50
374-011-19	374-200-51
374-011-20	374-200-52
374-011-21	374-200-53
374-011-22	374-200-54
374-020-40	374-200-55
374-020-42	374-200-56
374-020-55	374-200-57
374-200-03	374-210-08
374-200-29	374-250-01
374-200-30	374-250-03
374-200-38	374-410-08
374-200-39	374-440-05
374-200-40	374-440-06
374-200-41	374-440-07
374-200-42	374-440-08
374-200-43	375-020-01
374-200-44	

LAW OFFICES OF  
 BEST, BEST & KRIEGER LLP  
 3750 UNIVERSITY AVENUE, SUITE 400  
 P.O. BOX 1028  
 RIVERSIDE, CALIFORNIA 92502

1  
2  
3  
4  
5  
6  
7  
8  
9  
10  
11  
12  
13  
14  
15  
16  
17  
18  
19  
20  
21  
22  
23  
24  
25  
26  
27  
28

**EXHIBIT "B"**

**Antelope Valley-East Kern Water Agency (AVEK)  
 Property APNs & Acreage**

**Godde:**

APNs Old:	APNs New:	Acres (Gross)
3258-001-004	3258-001-900	10.00
3258-001-005	3258-001-901	5.00
3258-001-039	3258-001-902	80.23
3258-010-001	3258-010-902	160.00
3258-010-068	3258-010-901	160.00
3258-010-069	3258-010-900	160.00
3261-001-005	3261-001-900	80.00
3261-001-007	3261-001-901	160.00
3261-009-001	3261-009-900	640.00
<b>Total:</b>		<b>1455.23</b>

**Calandri:**

APNs:	Acres (Gross)	APNs Con't:	Acres (Gross)
359-032-38	118.21	374-200-45	5.01
374-011-13	313.05	374-200-50	9.68
374-011-19	20.10	374-200-51	9.69
374-011-20	20.10	374-200-52	9.69
374-011-21	20.14	374-200-53	9.69
374-011-22	20.15	374-200-54	2.50
374-020-40	9.42	374-200-55	2.50
374-020-42	23.81	374-200-56	2.50
374-020-55	135.91	374-200-57	2.50
374-200-03	80.00	374-210-08	79.09
374-200-29	2.50	374-250-01	67.73
374-200-30	2.50	374-250-03	9.55
374-200-38	9.61	374-410-08	39.46
374-200-39	9.61	374-440-05	20.11
374-200-40	9.62	374-440-06	20.09
374-200-41	9.62	374-440-07	20.08
374-200-42	5.01	374-440-08	20.09
374-200-43	5.01	375-020-01	312.72
374-200-44	5.01		
<b>Total:</b>		<b>1462.06</b>	

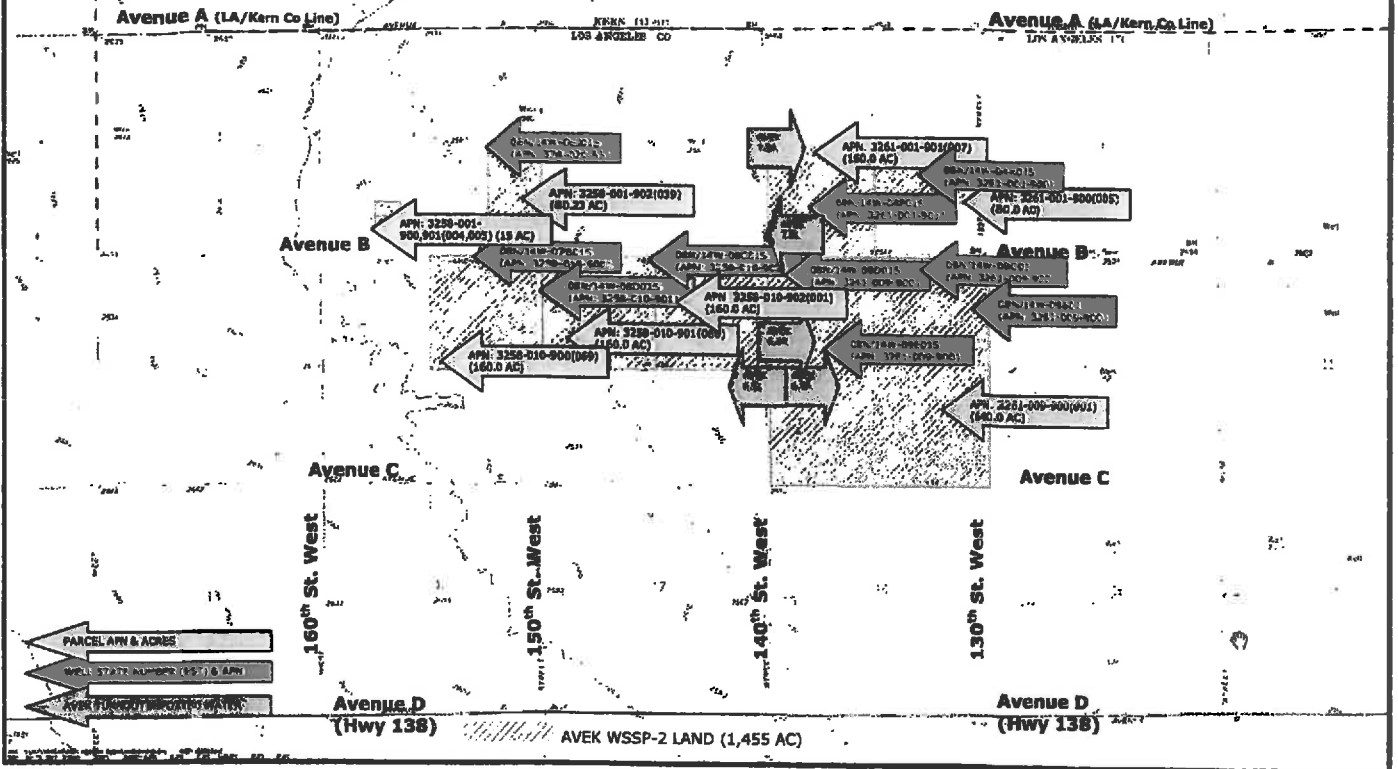
Antelope Valley-East Kern Water Agency  
Water Supply Stabilization Program, Project 2 (WSSP-2)  
AVEK Property, Well Locations, AVEK Turnouts



WATER SUPPLY STABILIZATION PROGRAM

NORTH BUTTES WSSP  
CONCEPT LAYOUT

FIGURE C-6



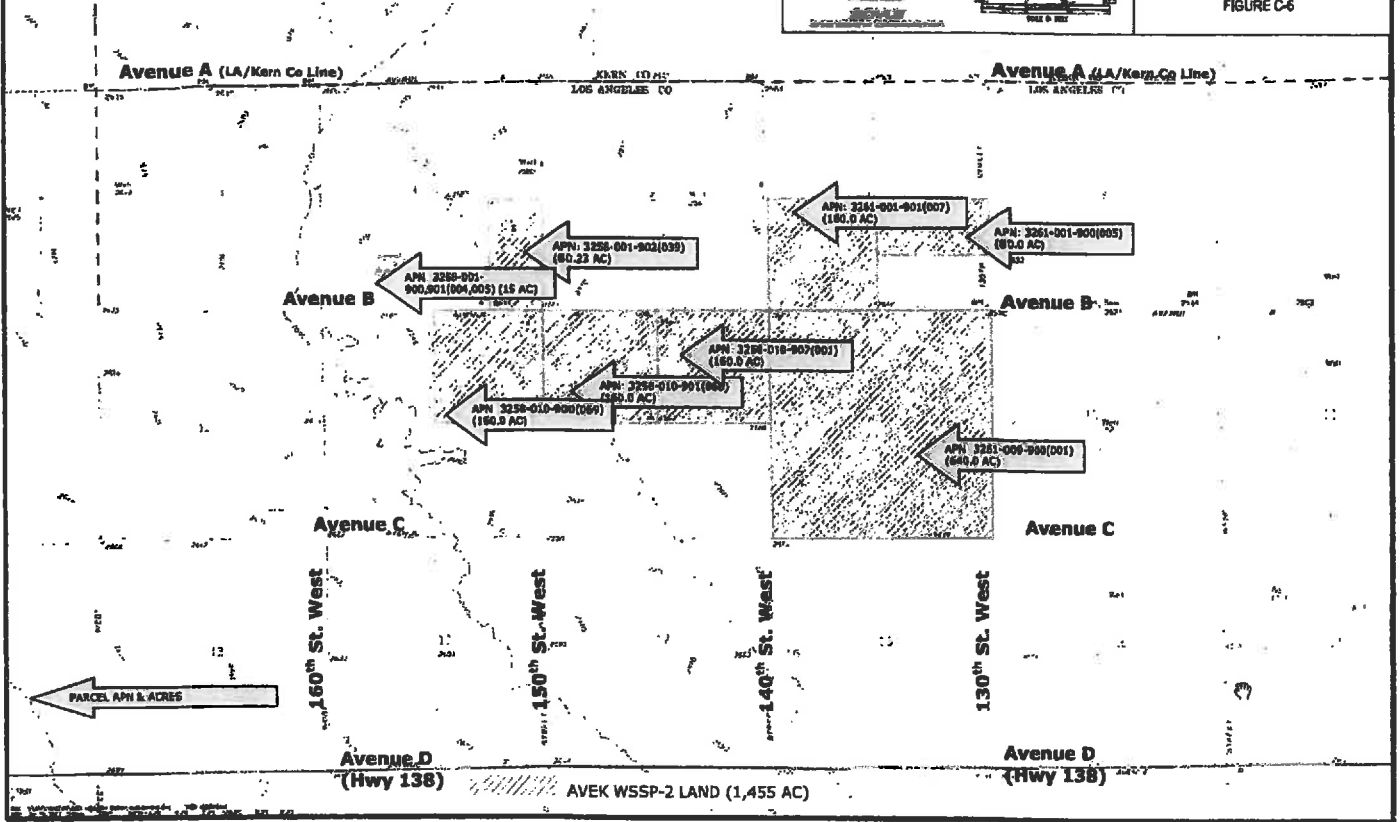
Antelope Valley-East Kern Water Agency  
Water Supply Stabilization Program, Project 2 (WSSP-2)  
AVEK Property, Well Locations, AVEK Turnouts



WATER SUPPLY STABILIZATION PROGRAM

NORTH BUTTES WSSP  
CONCEPT LAYOUT

FIGURE C-6



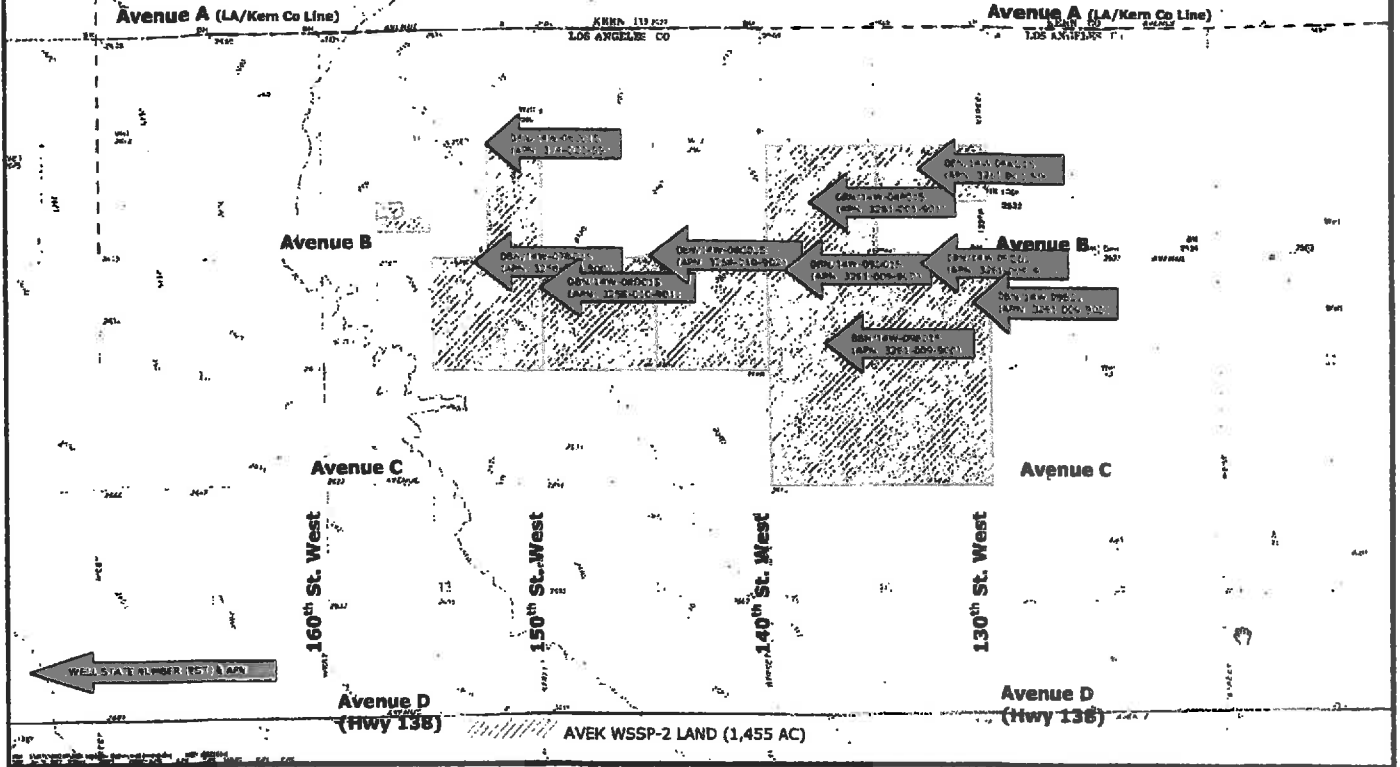
**Antelope Valley-East Kern Water Agency**  
**Water Supply Stabilization Program, Project 2 (WSSP-2)**  
AVEK Property, Well Locations, AVEK Turnouts



WATER SUPPLY STABILIZATION PROGRAM

NORTH BUTTES WSSP  
CONCEPT LAYOUT

FIGURE C-6



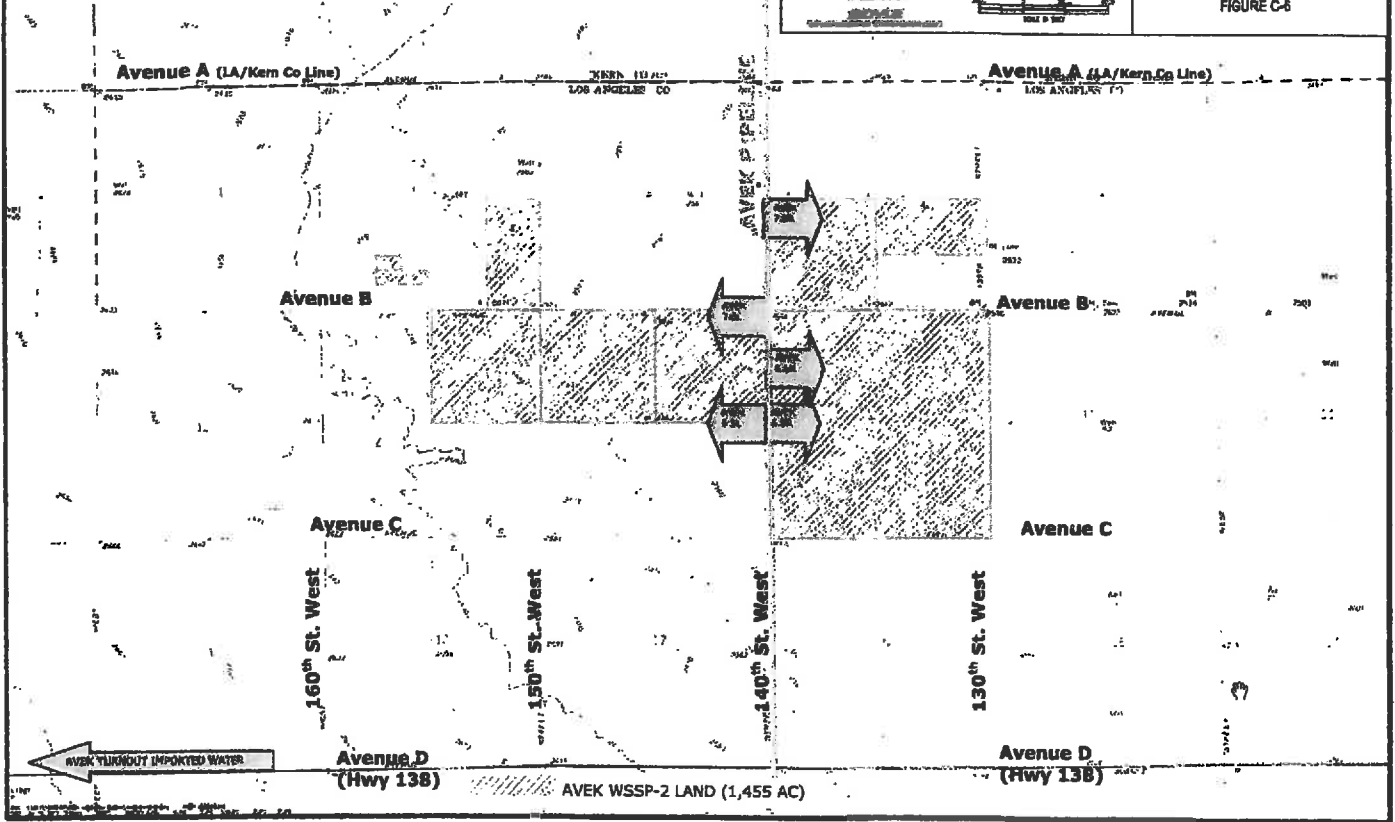
Antelope Valley-East Kern Water Agency  
Water Supply Stabilization Program, Project 2 (WSSP-2)  
AVEK Property, Well Locations, AVEK Turnouts



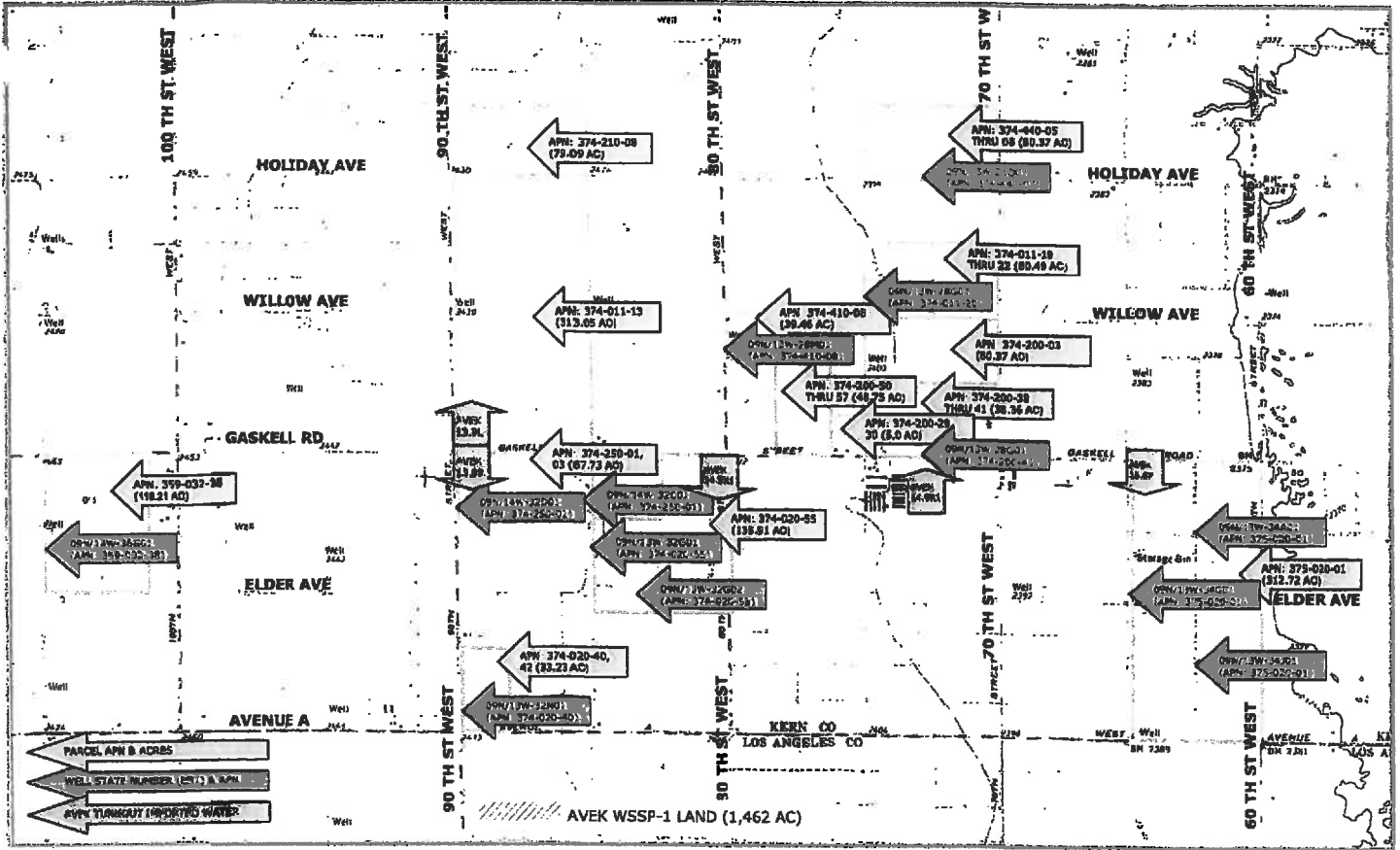
WATER SUPPLY STABILIZATION PROGRAM

NORTH BUTTES WSSP  
CONCEPT LAYOUT

FIGURE C-6



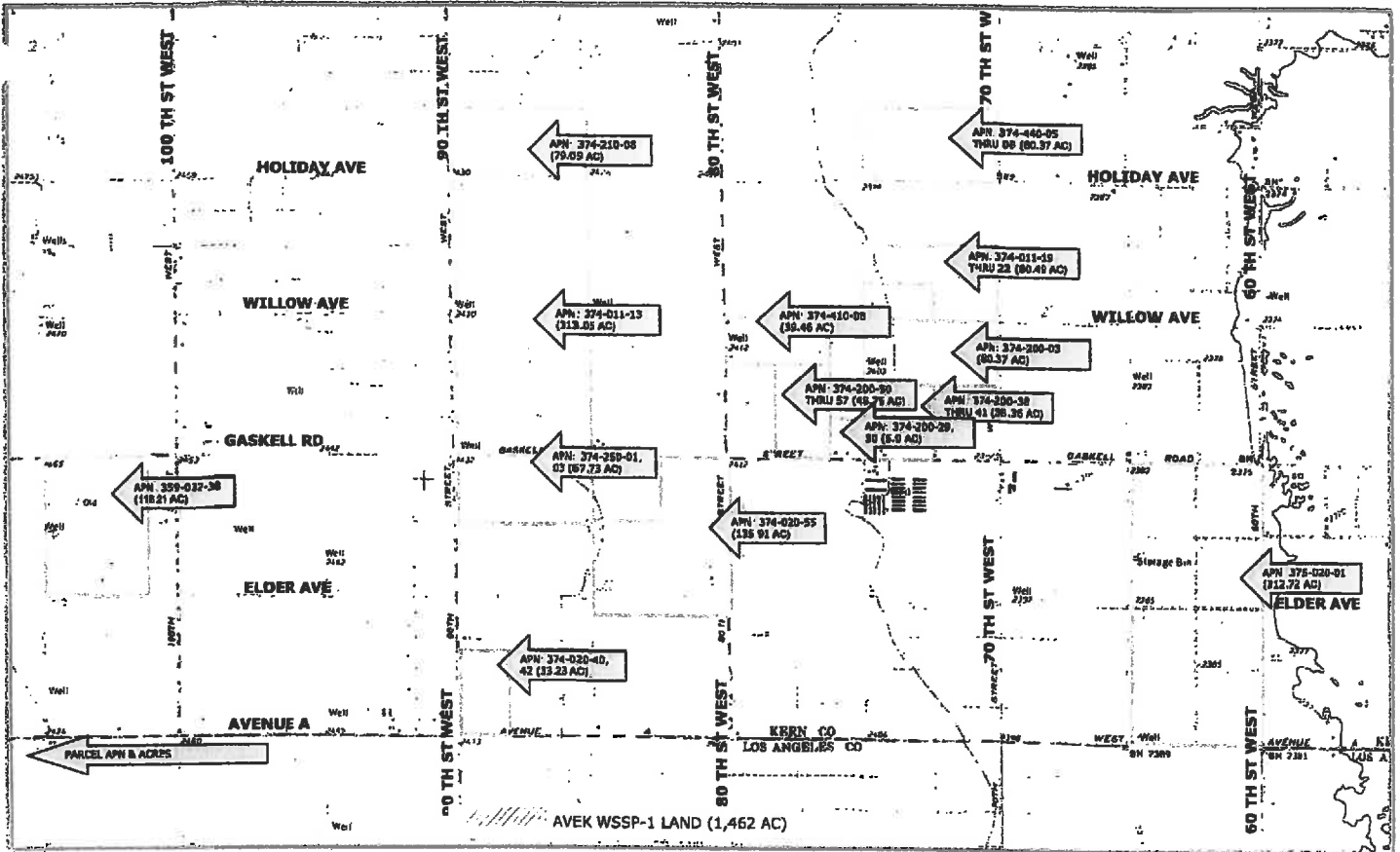
Antelope Valley-East Kern Water Agency (AVEK)  
Water Supply Stabilization Program, Project 1 (WSSP-1)  
AVEK Property, Well Locations, Turnout Locations





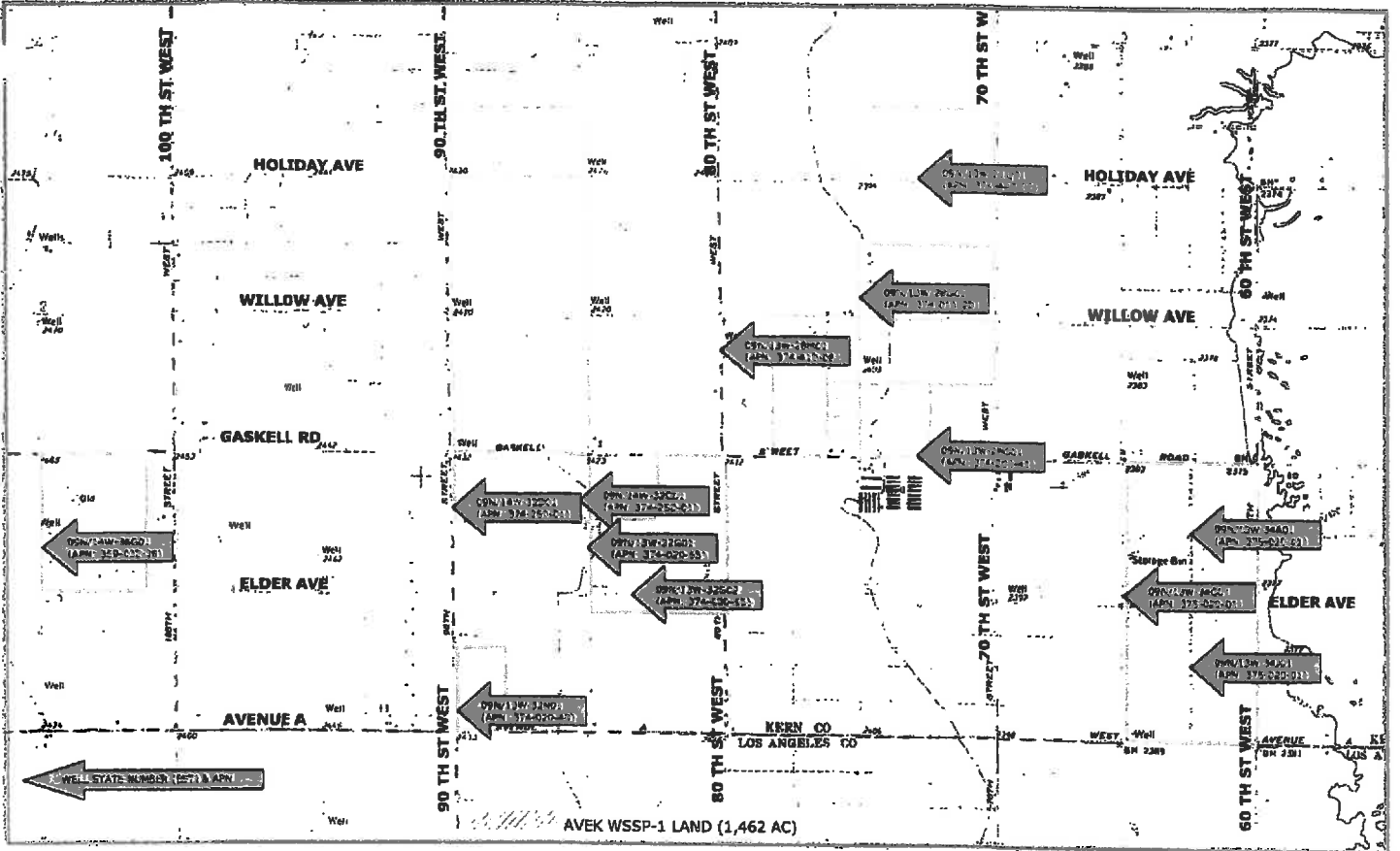
12/20/2017

Antelope Valley-East Kern Water Agency (AVEK)  
Water Supply Stabilization Program, Project 1 (WSSP-1)  
AVEK Property



12/20/2012

Antelope Valley-East Kern Water Agency (AVEK)  
Water Supply Stabilization Program, Project 1 (WSSP-1)  
AVEK Property, Well Locations



12/20/2012

Antelope Valley-East Kern Water Agency (AVEK)  
Water Supply Stabilization Program, Project 1 (WSSP-1)  
AVEK Property, AVEK Turnout Locations

