

EXHIBIT I

S. A. CAMP PUMP COMPANY

08/09/2010

PUMP TEST REPORT

GRIMMWAY LANE 150

CUSTOMER : GRIMMWAY FARMS
WELL # : LANE WELL
METER : 345M006602
LEGAL :
LOCATION : 1/8 MILE WEST OF 170TH ST WEST ON NORTH SIDE OF AVE A
TEST DATE : 08/09/2010

EQUIPMENT

Motor: G.E. HP:200 Volts:480 R.P.M.:1800 Serial No:ZPJ1223004
Frame: 6324P Type: K
Pump : LAYNE AND BOWLER Type: Oil Lube Turbine

TEST RESULTS

Standing Water Level below Surface of Ground	_____	_____	310 FT
Draw Down From Standing to Pumping Level	_____	_____	25 FT
Pumping Water Level	_____	_____	335 FT
Discharge Head Above Ground	_____	GA-27.0	62.4 FT
TOTAL LIFT	_____	_____	397.4 FT
WATER PUMPED	_____	_____	1106 GPM.
Yield of Well (G.P.M. per foot Draw Down)	_____	_____	44.2 GPM/FT
HORSEPOWER INPUT TO MOTOR	_____	_____	207.8 H.P.
OVERALL PLANT EFFICIENCY	_____	_____	53.4 %
Acre Foot in 24 Hours	_____	_____	4.89
Kilowatt Input to Motor	_____	_____	155.02
Kilowatt Hours/Acre Foot Pumped	_____	_____	761.21
Average Cost per KW	_____	_____	_____
Cost Per Acre Foot	_____	_____	_____

REVS: 76/61 BAD DISCHARGE FOR FLOW TEST CUSTOMERS FLOW METER 1500 GPM
KH: 1.20
K: 40
ID: 101/4 82.50
SCALE: 13.40
AMPS TURBINE 233 221 227
AMPS BOOST 91 93 87
AIRLINE:

TEST ENGINEER Jim Weir

S . A . C A M P P U M P C O M P A N Y

08/14/2010 11:23 am

Page: 1

P U M P T E S T F I L E R E P O R T
GRIMMWAY LANE 150

Name	GRIMMWAY FARMS	-----	!PUMP DATA INSTALLATION DATE 10/23/2009	!
Well	LANE WELL	-----	!PUMP SETTING 410	!
Meter	345M006602	-----	!AIRLINE 240-GAL AND 180-STAINLESS	!
Legal		-----	!CT&S SIZE 10 X21/2&3 X 111/16	!
Location	1/8 MILE WEST OF 170TH ST WEST	-----	!BOWLS 7 STAGES 12HCA7 AMERICAN MARSH	!
	ON NORTH SIDE OF AVE A	-----	!WELL DEPTH 16 TO 797	!
		-----	! BLANK 356 PERFORATIONS 491	!
		-----	!	!
		-----	!	!

Motor G.E.	HP 200	Volts 480	R.P.M. 1800	Serial ZPJ1223004
Frame 6324P	Type K	Pump LAYNE AND BOWLER	Type Oil Lube Turbine	

DATE	09/09/98	07/14/99	10/05/00	11/08/07	08/28/09	08/09/10
STANDING WATER	276.8'	258'	278'	284'	300'	310'
DRAW DOWN	18.6'	16'	15'	14'	18'	25'
PUMPING WATER	295.4'	274'	293'	298'	318'	335'
DISCHARGE HEAD	9.5'	11.6'	11.6'	9.2'	32.3'	62.4'
TOTAL LIFT	304.9'	285.6'	304.6'	307.2'	350.3'	397.4'
G.P.M.	1471	1452	1492	1397	1021	1106
GPM/FT	79.1	90.8	99.5	99.8	56.7	44.2
H.P./RPM	165.1	163	161.2	202.7	221	207.8
EFF.	68.6	64.2	71.2	53.5	40.9	53.4

AC FT IN 24 HRS	6.50	6.42	6.59	6.17	4.51	4.89
KW TO MOTOR	123.16	121.60	120.26	151.21	164.87	155.02
KW HOURS						
PER AC FT	454.7	454.8	437.7	587.8	876.9	761.2
COST						
PER AC/FT						

08/14/2010

S . A . C A M P P U M P C O M P A N Y

Page: 3

P u m p E s t i m a t e C a l c u l a t i o n s

GRIMMWAY LANE 150

CUSTOMER: GRIMMWAY FARMS
WELL # :
METER : 345M006602
LEGAL :
LOCATION: 1/2 MILE WEST OF 170 ST WEST ON NORTH SIDE OF AVE A

MOTOR U.S. HP 200 VOLTS 480 R.P.M. 1770 SERIAL ZPJ1223004
FRAME 6324P TYPE: K PUMP: LAYNE AND BOWLER TYPE: Oil Lube Turbine

7 STAGES 12"HCA7-95 J-LINE

G.P.M.	LAB HEAD	B HP	BOWL EFF.	FIELD HEAD	FIELD INPUT HP	FIELD EFF.
1800	287.0	179.6	75.0%	240	197.4	55.3 %
1600	364.0	185.1	82.0%	330	203.4	65.6 %
1400	413.0	177.5	85.0%	380	195.1	68.9 %
1200	434.0	166.1	82.0%	410	182.5	68.1 %
1000	476.0	167.0	74.5%	460	183.5	63.3 %

DATE OF LAST WORK: 10/23/2009
PUMP SETTING: 410 ft.
AIRLINE: 410 ft.
C.T.S. 0360-10" X 3" X 111/16"
C.T.S. 0050-10" X 21/2" X 111/16"
BOWLS: 7 STAGES 12"HCA7-95 J-LINE
WELL INFORMATION:
16 TO 780
BLANK 356 PERFORATIONS 491



SOUTHERN CALIFORNIA
EDISON[®]

An EDISON INTERNATIONAL[®] Company

Confidential/Proprietary Information

September 16, 2011

CARL VOSS
GRIMMWAY FARMS
P.O. BOX 179
ARVIN, CA 93203

HYDRAULIC TEST RESULTS, Plant: LANE WELL
Location: 17249 W AVE A HP: 200
Cust #: 0-078-3452 Serv. Acct. #: 030-5083-37
Meter: V345N-2011 Pump Ref. #: 2857

In accordance with your request, an energy efficiency test was performed on your turbine well pump on September 13, 2011. If you have any questions regarding the results which follow, please contact RICK KOCH at (805)654-7312.

Equipment

Pump:	L & B	No:	D25349
Motor:	US	No:	ZPJ1223004

Results

Discharge Pressure, PSI	26.9
Standing Water Level, Feet	283.5
Drawdown, Feet	19.7
Discharge Head, Feet	62.1
Pumping Water Level, Feet	303.2
Total Head, Feet	365.3
Capacity, GPM	1,441
GPM per Foot Drawdown	73.1
Acre Feet Pumped in 24 Hours	6.369
kW Input to Motor	165.0
HP Input to Motor	221.3
Motor Load (%)	103.4
Measured Speed of Pump, RPM	1,780
kWh per Acre Foot	622
Overall Plant Efficiency (%)	60.1

The well and booster were both running.

RUSS JOHNSON
Manager
Hydraulic Services



SOUTHERN CALIFORNIA
EDISON[®]

An EDISON INTERNATIONAL[®] Company

Confidential/Proprietary Information

September 16, 2011

CARL VOSS
GRIMMWAY FARMS
P.O. BOX 179
ARVIN, CA 93203

PUMPING COST ANALYSIS, Plant: LANE WELL
Location: 17249 W AVE A HP: 200
Cust #: 0-078-3452 Serv. Acct. #: 030-5083-37
Meter: V345N-2011 Pump Ref. #: 2857

The following energy efficiency analysis is presented as an aid to your cost accounting. This is an estimate based on the conditions present during the Edison pump test performed on September 13, 2011, billing history for the past 12 months, and your current rate of TOU-PA-A.

Assuming that water requirements will be the same as for the past year, and all operating conditions (annual hours of operation, head above, and water pumping level) will remain the same as they were at the time of the pump test, it is estimated that:

1. Overall plant efficiency can be improved from 60.1% to 70.0%.
2. This can save you up to 68,328 kWh and \$6,830.09 annually.
3. These kWh savings translate to a 30-ton decrease in CO₂ emissions.

	Plant Efficiency		
	<u>Existing</u>	<u>Improved</u>	<u>Savings</u>
Total kWh	481,992	413,664	68,328
kW Input	165.0	141.6	23.4
kWh per Acre Foot	622	534	88
Acre Feet per Year	775.1		
Average Cost per kWh	\$0.10		
Average Cost per Acre Foot	\$62.16	\$53.35	\$8.81
Overall Plant Efficiency (%)	60.1	70.0	
Total Annual Cost	\$48,179.92	\$41,349.84	\$6,830.09

It is sincerely hoped that this information will prove helpful to you, and that your concerns over maintaining optimum pumping efficiency will be continued. If you have any questions regarding this report, please contact RICK KOCH at (805)654-7312.

RUSS JOHNSON
Manager
Hydraulic Services



**Save Energy,
Save Money. . .
Your test results show that you can!**

September 16, 2011

CARL VOSS
GRIMMWAY FARMS
P.O. BOX 179
ARVIN, CA 93203

PUMPING COST ANALYSIS, Plant: LANE WELL
Location: 17249 W AVE A HP: 200
Cust #: 0-078-3452 Serv. Acct. #: 030-5083-37
Meter: V345N-2011 Pump Ref. #: 2857

Dear SCE Customer:

Helping California businesses save energy and money is a major goal at SCE. As you know, our Technical Specialist performed a free energy efficiency test on one or more pumps at your facility on September 13, 2011. We thank you for the opportunity to provide this service, and appreciate your interest in the performance of your pumps.

The results of the testing, shown in the table below, indicate that the pump listed above has the potential for improved Overall Plant Efficiency (OPE), lower energy costs, and a cash incentive.

	Projected Incentive, Energy, and Cost Savings			
	Existing	Improved	Savings	Cash Incentive
Total kWh	481,992	413,664	68,328	\$6,149.54
kW Input	165.0	141.6	23.4	
kW on-peak activity factor *			15.2	\$1,520.40
Acre Feet per Year	775.1			
kWh per Acre Foot	622	534	88	
Average Cost per Acre Foot	\$62.16	\$53.35	\$8.81	
Overall Plant Efficiency (%)	60.1	70.0		
Annual Total	\$48,179.92	\$41,349.84	\$6,830.09	\$7,669.93

(*The kW on-peak activity factor represents how the kW impacts the SCE system during on-peak periods as determined by SCE's agricultural and water pumping customers' average load profiles. By improving efficiency, your expected kW savings is 23.4 kW, and the savings used for incentive calculations is 65% of 23.4, or 15.2 kW.)

Case studies have shown that repairing, retrofitting, or replacing inefficient pumps can save energy and money, and may even help you avoid serious operational problems. For your business, this could mean the following:

- **Improved Plant Efficiency:** Your OPE can be improved from 60.1% to 70.0%.
- **Lower Energy Costs:** Based on the test data, your past energy usage, and your current rate of TOU-PA-A, we estimate that you may save up to 68,328 kWh annually (which translates to a 30-ton decrease in CO₂ emissions). This may result in **energy cost savings of \$6,830.09.**
- **Cash Incentive:** Through the retrofit and installation of more energy-efficient equipment, you have the potential to receive an incentive of \$0.09 per kWh and \$100 per on-peak activity factored kW reduced, courtesy of SCE's Customized Efficiency Program. Based on your estimated kWh and kW, you would be eligible for a **Potential Cash Incentive of \$7,669.93,** capped at 50% of your project cost. (See contract for details.)

If you are interested in an incentive for this pump, please contact CYNTHIA BRAVO at (559)685-3787 to complete a project application. All applicants must receive a **written approval authorization before** implementing any project; failure to comply will result in forfeiture of incentive funding.

We encourage you to review your results and take advantage of SCE's energy efficiency expertise and incentives. Visit www.sce.com/rebatesandsavings, or give us a call and let us know how we can be of further service to you.

Sincerely,

Southern California Edison

September 16, 2011

CARL VOSS
GRIMMWAY FARMS
P.O. BOX 170
ARVIN, CA 93203

PUMPING COST ANALYSIS, Plant: LANE BOOSTER
Location: 17249 W AVE A HP: 75
Cust #: 0-075-5482 Serv. Acct. #: 000-0083-37
Meter: V348N-2011 Pump Ref. #: 17314

The following energy efficiency analysis is presented as an aid to your cost accounting. This is an estimate based on the conditions present during the Edison pump test performed on September 13, 2011, billing history for the past 12 months, and your current rate of TOU-PA-A.

Assuming that water requirements will be the same as for the past year, and all operating conditions (annual hours of operation, head above, and water pumping level) will remain the same as they were at the time of the pump test, it is estimated that:

1. Overall plant efficiency can be improved from 54.3% to 70.0%.
2. This can save you up to 42,551 kWh and \$4,253.41 annually.
3. These kWh savings translate to a 19-ton decrease in CO₂ emissions.

	Existing	Plant Efficiency Improved	Savings
Total kWh	189,876	147,325	42,551
kW Input	65.0	50.4	14.6
kWh per Acre Foot	245	190	55
Acre Feet per Year	775.1		
Average Cost per kWh	\$0.10		
Average Cost per Acre Foot	\$24.40	\$19.00	\$5.40
Overall Plant Efficiency (%)	54.3	70.0	
Total Annual Cost	<u>\$18,988.00</u>	<u>\$14,725.89</u>	<u>\$4,262.11</u>

It is sincerely hoped that this information will prove helpful to you, and that your concerns over maintaining optimum pumping efficiency will be continued. If you have any questions regarding this report, please contact RICK KOCH at (805)864-7312.

RUSS JOHNSON
Manager
Hydraulic Services



Confidential/Proprietary Information

September 16, 2011

CARL VOSS
GRIMMWAY FARMS
P.O. BOX 179
ARVIN, CA 93203

HYDRAULIC TEST RESULTS, Plant: LANE BOOSTER
Location: 17249 WAVE A HP: 75
Cust #: 0-078-3452 Serv. Acct. #: 030-5083-87
Motor: V346N-2011 Pump Ref. #: 17814

In accordance with your request, an energy efficiency test was performed on your centrifugal booster pump on September 13, 2011. If you have any questions regarding the results which follow, please contact RICK KOCH at (805)664-7312.

Equipment
Pump: FAIRB No: K9V1201240
Motor: US No: R998400793

Results

Discharge Pressure, PSI 81.8
Discharge Head, Feet 186.0
Suction Head or Lift, Feet 53.9
Total Head, Feet 130.1
Capacity, GPM 1,441
Acre Feet Pumped in 24 Hours 6,369
kW Input to Motor 65.0
HP Input to Motor 87.2
Motor Load (%) 106.7
Measured Speed of Pump, RPM 1,779
kWh per Acre Foot 246
Overall Plant Efficiency (%) 54.3

The well and booster were both running.

RUSS JOHNSON
Manager
Hydraulic Services



Multiple Point Test Summary

Pump/Point Name	12/19/2005	12/21/2004	9/9/1998	8/24/1993	12/19/2005	8/13/2008	9/13/2011
Test Date							
Pump Tester Name	RICK KOCH	RICK KOCH	GARY PARDUE	GARY PARDUE	RICK KOCH	RICK KOCH	RICK KOCH
CSS Service Account	015-5058-85	015-5058-85	011-6874-07		015-5058-85	030-5083-37	030-5083-37
Meter Number	345M-6602	P729K-1507	P729K-1507	P831-1499	345M-6602	345M-6602	V7345N-2011
Reference Number	2857	2857	2857	2857	2857	2857	2857
Rate	TOU-PA-7B	TOU-PA-7B	PA-2	PA-1	TOU-PA-7B	TOU-PA-B	TOU-PA-A
Average \$ Cost/kWh	0.08747	0.08303	0.150069	0.11	0.08747	0.10065	0.09996
Type	TW	TW	TW	TW	TW	TW	TW
Motor HP	150	150	150	150	150	150	200
Motor Mfg.	US	US	US	US	US	US	US
Pump Mfg.	L & B	L & B	L & B	L & B	L & B	L & B	L & B

Test Points	12/19/2005	12/21/2004	9/9/1998	8/24/1993	12/19/2005	8/13/2008	9/13/2011
Discharge Pressure, PSI	6.4	9.3	4.1				26.9
Suction Pressure, PSI							
Drawdown, Ft	15.7	13.7	18.6				19.7
Pumping Level, Ft	301.9	299.2	295.4				303.2
Standing Level, Ft	286.2	285.5	276.8				283.5
Discharge Head Ft	14.8	21.5	9.5				62.1
Suction Head Ft							
Total Head Ft	316.7	320.7	304.9				365.3
Customer GPM			1434				
Capacity GPM	1192	1316	1471				1441
GPM/Ft Drawdown, Ft	84.5	96.1	79.1				73.1
Acre Ft/24 Hour	5,269	5,817	6,502				6,369
KW Input	119	121.5	123.1				165
HP Input	159.6	162.9	165.1				221.3
Pump Speed, RPM	1767	1773	1765				1780
Motor Load %	98.9	99.4	100.7				103.4
kWh/Acre Ft	542	501	454				622
Overall Plant Eff., %	61.9	65.4	68.6				60.1

Improved Plant Eff., %	70%	72%	72%	70%	70%	70%	70%
Improved kWh/Acre Ft							534.0
Potential Savings, \$							\$6,850

Note: For more detailed information pertaining to pump test results, please refer to Pump Test Results and Cost Analysis Letters

Multiple Point Test Summary

Pumping Plant Name	LANE BOOSTER	LANE BOOSTER	LANE BOOSTER
Test Date	12/19/2005	12/21/2004	9/9/1998
Pump Tester Name	RICK KOCH	RICK KOCH	GARY PARDUE
CSS Service Account	015-5058-85	015-5058-85	011-6874-07
Meter Number	345M-6602	P729K-1507	P729K-1507
Reference Number	17814	17814	17814
Rate	TOU-PA-7B	TOU-PA-7B	PA-2
Average \$ Cost/kWh	0.08747	0.08303	0.150069
Type	CB	CB	CB
Motor HP	75	75	75
Motor Mfg.	US	US	US
Pump Mfg.	FAIRB	FAIRB	FAIRB

Test Points	T1	T2	T3	T1	T2	T3	T1	T2	T3	T1	T2	T3
Discharge Pressure, PSI	72			75			77					
Suction Pressure, PSI	6.4			9.3			4.1					
Drawdown, Ft.												
Pumping Level, Ft.												
Standing Level, Ft.												
Discharge Head Ft.	166.3			173.3			177.9					
Suction Head Ft.	14.8			21.5			9.5					
Total Head Ft.	151.5			151.8			168.4					
Customer GPM							1434					
Capacity GPM	1374			1316			1471					
GPM/Ft. Drawdown, Ft.												
Acre Ft./24 Hour	6.073			5.817			6.502					
kW Input	62			61			69.7					
HP Input	83.1			81.8			93.5					
Pump Speed, RPM	1783			1783			1777					
Motor Load %	99.8			98.2			112.2					
kWh/Acre Ft.	245			252			257					
Overall Plant Eff., %	63.2			61.7			66.9					

Improved Plant Eff., %	70%	72%	72%
Improved kWh/Acre Ft.	221.0	216.0	
Potential Savings, \$	\$840	\$2,230	

Note: For more detailed information pertaining to pump test results, please refer to Pump Test Results and Cost Analysis Letters

Multiple Point Test Summary

Pumping Plant Name	PANE WELL		LANE WELL		LANE WELL		WELL	
	12/19/2005	12/21/2004	12/21/2004	9/9/1998	8/24/1993			
Test Date	12/19/2005	12/21/2004	12/21/2004	9/9/1998	8/24/1993			
Pump Tester Name	RICK KOCH	RICK KOCH	RICK KOCH	GARY PARDUE	GARY PARDUE			
CSS Service Account	015-5058-85	015-5058-85	015-5058-85	011-6874-07				
Meter Number	345M-6602	P729K-1507	P729K-1507	P729K-1507	P831-1499			
Reference Number	2857	2857	2857	2857	2857			
Rate	TOU-PA-7B	TOU-PA-7B	TOU-PA-7B	PA-2	PA-1			
Average \$ Cost/kWh	0.08747	0.08303	0.08303	0.150069	0.11			
Type	TW	TW	TW	TW	TW			
Motor HP	150	150	150	150	150			
Motor Mfg.	US	US	US	US	US			
Pump Mfg.	L & B	L & B	L & B	L & B	L & B			
Test Points	P1	P2	P3	P4	P5	P6	P7	P8
Discharge Pressure, PSI	6.4			9.3			4.1	0.3
Suction Pressure, PSI								
Drawdown, Ft	15.7			13.7			18.6	18.1
Pumping Level, Ft	301.9			299.2			295.4	287.4
Standing Level, Ft	286.2			285.5			276.8	269.3
Discharge Head Ft	14.8			21.5			9.5	0.7
Suction Head Ft								
Total Head Ft	316.7			320.7			304.9	288.1
Customer GPM							1434	
Capacity GPM	1374			1316			1471	1400
GPM/Ft Drawdown, Ft	87.5			96.1			79.1	77.3
Acre Ft/24 Hour	6.073			5.817			6.502	6.188
kW Input	122			121.5			123.1	131.9
HP Input	163.6			162.9			165.1	176.9
Pump Speed, RPM	1773			1773			1765	1766
Motor Load %	99.8			99.4			100.7	107.9
kWh/Acre Ft	482			501			454	512
Overall Plant Eff., %	67.2			65.4			68.6	57.6
Improved Plant Eff., %	70%			72%			72%	70%
Improved kWh/Acre Ft	463.0			456.0				
Potential Savings, \$	\$691			\$2,833				

Note: For more detailed information pertaining to pump test results, please refer to Pump Test Results and Cost Analysis Letters

Southern California Edison Company



P. O. BOX 361
LOS ANGELES, CALIFORNIA 90063

February 25, 1970

W. E. Weaver
District Manager
Lancaster Business Office

Subject: Frank Lane
S/A 175th St. W. and Ave. A
M/A 44835 10th St. W., Lancaster

On February 16, 1970, a test was made on the above customer's deep well turbine pump.
The following information was obtained:

EQUIPMENT

Pump: Layne & Bowler No. D25349
Motor: US No. C1005509
150 HP, Volts 460, Amps 173
Meter: P29-3751

TEST RESULTS

Discharge Pressure, P.s.i.		13.0
Standing Water Level, Ft.	231.2	
Drawdown, Ft.	23.0	19.7
Discharge Head, Ft.	12.5	30.0
Pumping Water Level, Ft.	254.2	250.9
Total Head, Ft.	241.7	280.9
Capacity GPM	1869.	1660.
GPM Per Ft. Drawdown	81.3	
Acre Ft. Pumped Per 24 Hours	8.261	7.337
KW Input to Motor	125.1	125.7
HP Input to Motor	167.6	168.4
Motor Load	102.2%	102.7%
Measured Speed of Pump RPM	1765.	
KWH Per Acre Ft.	364.	411.
Over-all Plant Efficiency	68.1%	70.0%

Test point No. 1 is the normal operation of this pump at the time of the above test.
Test point No. 2 was obtained by throttling the discharge.

R. T. Siddoway
Hydraulic-Industrial
Test Supervisor

RTS:cp

Lane Well-Crimmway current acct holder
 SCE Past Billing History
 Current S/A #030-5083-37

..A

Cust Name	Serv Acct Num	Current Rate	Meter Num	Street Addr	City Name	Zip	Billing Mo/Yr	Start Rate	KWH Usage
SONRISE FARMS	15505885	TOU-PA-7B	V345N-002011	17249 AVE A WELL	ROSAMOND	93560	January, 2000	TOU-PA-7B	0
SONRISE FARMS	15505885	TOU-PA-7B	V345N-002011	17249 AVE A WELL	ROSAMOND	93560	February, 2000	TOU-PA-7B	0
SONRISE FARMS	15505885	TOU-PA-7B	V345N-002011	17249 AVE A WELL	ROSAMOND	93560	March, 2000	TOU-PA-7B	7360
SONRISE FARMS	15505885	TOU-PA-7B	V345N-002011	17249 AVE A WELL	ROSAMOND	93560	April, 2000	TOU-PA-7B	9680
SONRISE FARMS	15505885	TOU-PA-7B	V345N-002011	17249 AVE A WELL	ROSAMOND	93560	May, 2000	TOU-PA-7B	51880
SONRISE FARMS	15505885	TOU-PA-7B	V345N-002011	17249 AVE A WELL	ROSAMOND	93560	June, 2000	TOU-PA-7B	74680
SONRISE FARMS	15505885	TOU-PA-7B	V345N-002011	17249 AVE A WELL	ROSAMOND	93560	July, 2000	TOU-PA-7B	57920
SONRISE FARMS	15505885	TOU-PA-7B	V345N-002011	17249 AVE A WELL	ROSAMOND	93560	August, 2000	TOU-PA-7B	52520
SONRISE FARMS	15505885	TOU-PA-7B	V345N-002011	17249 AVE A WELL	ROSAMOND	93560	September, 2000	TOU-PA-7B	

Handwritten mark

Lane Well-Grimmway current acct holder
 SCE Past Billing History
 Current: SVA#030-0083-67

SONRISE FARMS	15505885	TOL-PA-7B	V345N-002011	17249 AVE A WELL	ROSAMOND	93560	October, 2000	TOL-PA-7B	21840
SONRISE FARMS	15505885	TOL-PA-7B	V345N-002011	17249 AVE A WELL	ROSAMOND	93560	November, 2000	TOL-PA-7B	1200
SONRISE FARMS	15505885	TOL-PA-7B	V345N-002011	17249 AVE A WELL	ROSAMOND	93560	December, 2000	TOL-PA-7B	0
SONRISE FARMS	15505885	TOL-PA-7B	V345N-002011	17249 AVE A WELL	ROSAMOND	93560	January, 2001	TOL-PA-7B	0
SONRISE FARMS	15505885	TOL-PA-7B	V345N-002011	17249 AVE A WELL	ROSAMOND	93560	February, 2001	TOL-PA-7B	2120
SONRISE FARMS	15505885	TOL-PA-7B	V345N-002011	17249 AVE A WELL	ROSAMOND	93560	March, 2001	TOL-PA-7B	0
SONRISE FARMS	15505885	TOL-PA-7B	V345N-002011	17249 AVE A WELL	ROSAMOND	93560	April, 2001	TOL-PA-7B	56040
SONRISE FARMS	15505885	TOL-PA-7B	V345N-002011	17249 AVE A WELL	ROSAMOND	93560	May, 2001	TOL-PA-7B	52000
SONRISE FARMS	15505885	TOL-PA-7B	V345N-002011	17249 AVE A WELL	ROSAMOND	93560	June, 2001	TOL-PA-7B	87160
SONRISE FARMS	15505885	TOL-PA-7B	V345N-002011	17249 AVE A WELL	ROSAMOND	93560	July, 2001	TOL-PA-7B	139120
SONRISE FARMS	15505885	TOL-PA-7B	V345N-002011	17249 AVE A WELL	ROSAMOND	93560	August, 2001	TOL-PA-7B	118920
SONRISE FARMS	15505885	TOL-PA-7B	V345N-002011	17249 AVE A WELL	ROSAMOND	93560	September, 2001	TOL-PA-7B	4690
SONRISE FARMS	15505885	TOL-PA-7B	V345N-002011	17249 AVE A WELL	ROSAMOND	93560	October, 2001	TOL-PA-7B	200
SONRISE FARMS	15505885	TOL-PA-7B	V345N-002011	17249 AVE A WELL	ROSAMOND	93560	November, 2001	TOL-PA-7B	45280
SONRISE FARMS	15505885	TOL-PA-7B	V345N-002011	17249 AVE A WELL	ROSAMOND	93560	December, 2001	TOL-PA-7B	32680
SONRISE FARMS	15505885	TOL-PA-7B	V345N-002011	17249 AVE A WELL	ROSAMOND	93560	January, 2002	TOL-PA-7B	15280
SONRISE FARMS	15505885	TOL-PA-7B	V345N-002011	17249 AVE A WELL	ROSAMOND	93560	February, 2002	TOL-PA-7B	1180
SONRISE FARMS	15505885	TOL-PA-7B	V345N-002011	17249 AVE A WELL	ROSAMOND	93560	March, 2002	TOL-PA-7B	0
SONRISE FARMS	15505885	TOL-PA-7B	V345N-002011	17249 AVE A WELL	ROSAMOND	93560	April, 2002	TOL-PA-7B	0
SONRISE FARMS	15505885	TOL-PA-7B	V345N-002011	17249 AVE A WELL	ROSAMOND	93560	May, 2002	TOL-PA-7B	47360
SONRISE FARMS	15505885	TOL-PA-7B	V345N-002011	17249 AVE A WELL	ROSAMOND	93560	June, 2002	TOL-PA-7B	76800
SONRISE FARMS	15505885	TOL-PA-7B	V345N-002011	17249 AVE A WELL	ROSAMOND	93560	July, 2002	TOL-PA-7B	141720
SONRISE FARMS	15505885	TOL-PA-7B	V345N-002011	17249 AVE A WELL	ROSAMOND	93560	August, 2002	TOL-PA-7B	82080
SONRISE FARMS	15505885	TOL-PA-7B	V345N-002011	17249 AVE A WELL	ROSAMOND	93560	September, 2002	TOL-PA-7B	34320
SONRISE FARMS	15505885	TOL-PA-7B	V345N-002011	17249 AVE A WELL	ROSAMOND	93560	October, 2002	TOL-PA-7B	9080
SONRISE FARMS	15505885	TOL-PA-7B	V345N-002011	17249 AVE A WELL	ROSAMOND	93560	November, 2002	TOL-PA-7B	58880
SONRISE FARMS	15505885	TOL-PA-7B	V345N-002011	17249 AVE A WELL	ROSAMOND	93560	December, 2002	TOL-PA-7B	16040
SONRISE FARMS	15505885	TOL-PA-7B	V345N-002011	17249 AVE A WELL	ROSAMOND	93560	January, 2003	TOL-PA-7B	0
SONRISE FARMS	15505885	TOL-PA-7B	V345N-002011	17249 AVE A WELL	ROSAMOND	93560	February, 2003	TOL-PA-7B	0
SONRISE FARMS	15505885	TOL-PA-7B	V345N-002011	17249 AVE A WELL	ROSAMOND	93560	March, 2003	TOL-PA-7B	0
SONRISE FARMS	15505885	TOL-PA-7B	V345N-002011	17249 AVE A WELL	ROSAMOND	93560	April, 2003	TOL-PA-7B	16240
SONRISE FARMS	15505885	TOL-PA-7B	V345N-002011	17249 AVE A WELL	ROSAMOND	93560	May, 2003	TOL-PA-7B	102760
SONRISE FARMS	15505885	TOL-PA-7B	V345N-002011	17249 AVE A WELL	ROSAMOND	93560	June, 2003	TOL-PA-7B	123480
SONRISE FARMS	15505885	TOL-PA-7B	V345N-002011	17249 AVE A WELL	ROSAMOND	93560	July, 2003	TOL-PA-7B	70800
SONRISE FARMS	15505885	TOL-PA-7B	V345N-002011	17249 AVE A WELL	ROSAMOND	93560	August, 2003	TOL-PA-7B	102480
SONRISE FARMS	15505885	TOL-PA-7B	V345N-002011	17249 AVE A WELL	ROSAMOND	93560	September, 2003	TOL-PA-7B	51360
SONRISE FARMS	15505885	TOL-PA-7B	V345N-002011	17249 AVE A WELL	ROSAMOND	93560	October, 2003	TOL-PA-7B	54400
SONRISE FARMS	15505885	TOL-PA-7B	V345N-002011	17249 AVE A WELL	ROSAMOND	93560	November, 2003	TOL-PA-7B	30200
SONRISE FARMS	15505885	TOL-PA-7B	V345N-002011	17249 AVE A WELL	ROSAMOND	93560	December, 2003	TOL-PA-7B	24400
SONRISE FARMS	15505885	TOL-PA-7B	V345N-002011	17249 AVE A WELL	ROSAMOND	93560	January, 2004	TOL-PA-7B	0
SONRISE FARMS	15505885	TOL-PA-7B	V345N-002011	17249 AVE A WELL	ROSAMOND	93560	February, 2004	TOL-PA-7B	0
SONRISE FARMS	15505885	TOL-PA-7B	V345N-002011	17249 AVE A WELL	ROSAMOND	93560	March, 2004	TOL-PA-7B	52720
SONRISE FARMS	15505885	TOL-PA-7B	V345N-002011	17249 AVE A WELL	ROSAMOND	93560	April, 2004	TOL-PA-7B	48280
SONRISE FARMS	15505885	TOL-PA-7B	V345N-002011	17249 AVE A WELL	ROSAMOND	93560	May, 2004	TOL-PA-7B	64080
SONRISE FARMS	15505885	TOL-PA-7B	V345N-002011	17249 AVE A WELL	ROSAMOND	93560	June, 2004	TOL-PA-7B	126920
SONRISE FARMS	15505885	TOL-PA-7B	V345N-002011	17249 AVE A WELL	ROSAMOND	93560	July, 2004	TOL-PA-7B	105800
SONRISE FARMS	15505885	TOL-PA-7B	V345N-002011	17249 AVE A WELL	ROSAMOND	93560	August, 2004	TOL-PA-7B	79560
SONRISE FARMS	15505885	TOL-PA-7B	V345N-002011	17249 AVE A WELL	ROSAMOND	93560	September, 2004	TOL-PA-7B	30320
SONRISE FARMS	15505885	TOL-PA-7B	V345N-002011	17249 AVE A WELL	ROSAMOND	93560	October, 2004	TOL-PA-7B	960
SONRISE FARMS	15505885	TOL-PA-7B	V345N-002011	17249 AVE A WELL	ROSAMOND	93560	November, 2004	TOL-PA-7B	120
SONRISE FARMS	15505885	TOL-PA-7B	V345N-002011	17249 AVE A WELL	ROSAMOND	93560	December, 2004	TOL-PA-7B	120

GRIMMWAY ENTERPRISES, INC	30508337	TOU-PA-A	V345N-002011	17249 AVENUE A	ROSAMOND	93560 February, 2008	TOU-PA-B	23831
GRIMMWAY ENTERPRISES, INC	30508337	TOU-PA-A	V345N-002011	17249 AVENUE A	ROSAMOND	93560 March, 2008	TOU-PA-B	58215
GRIMMWAY ENTERPRISES, INC	30508337	TOU-PA-A	V345N-002011	17249 AVENUE A	ROSAMOND	93560 April, 2008	TOU-PA-B	71951
GRIMMWAY ENTERPRISES, INC	30508337	TOU-PA-A	V345N-002011	17249 AVENUE A	ROSAMOND	93560 May, 2008	TOU-PA-B	75089
GRIMMWAY ENTERPRISES, INC	30508337	TOU-PA-A	V345N-002011	17249 AVENUE A	ROSAMOND	93560 June, 2008	TOU-PA-B	91940
GRIMMWAY ENTERPRISES, INC	30508337	TOU-PA-A	V345N-002011	17249 AVENUE A	ROSAMOND	93560 July, 2008	TOU-PA-B	105571
GRIMMWAY ENTERPRISES, INC	30508337	TOU-PA-A	V345N-002011	17249 AVENUE A	ROSAMOND	93560 August, 2008	TOU-PA-B	59759
GRIMMWAY ENTERPRISES, INC	30508337	TOU-PA-A	V345N-002011	17249 AVENUE A	ROSAMOND	93560 September, 2008	TOU-PA-B	11961
GRIMMWAY ENTERPRISES, INC	30508337	TOU-PA-A	V345N-002011	17249 AVENUE A	ROSAMOND	93560 October, 2008	TOU-PA-B	14311
GRIMMWAY ENTERPRISES, INC	30508337	TOU-PA-A	V345N-002011	17249 AVENUE A	ROSAMOND	93560 November, 2008	TOU-PA-B	14311
GRIMMWAY ENTERPRISES, INC	30508337	TOU-PA-A	V345N-002011	17249 AVENUE A	ROSAMOND	93560 December, 2008	TOU-PA-B	20362
GRIMMWAY ENTERPRISES, INC	30508337	TOU-PA-A	V345N-002011	17249 AVENUE A	ROSAMOND	93560 January, 2009	TOU-PA-B	14846
GRIMMWAY ENTERPRISES, INC	30508337	TOU-PA-A	V345N-002011	17249 AVENUE A	ROSAMOND	93560 February, 2009	TOU-PA-B	13215
GRIMMWAY ENTERPRISES, INC	30508337	TOU-PA-A	V345N-002011	17249 AVENUE A	ROSAMOND	93560 March, 2009	TOU-PA-B	48176
GRIMMWAY ENTERPRISES, INC	30508337	TOU-PA-A	V345N-002011	17249 AVENUE A	ROSAMOND	93560 April, 2009	TOU-PA-B	74896
GRIMMWAY ENTERPRISES, INC	30508337	TOU-PA-A	V345N-002011	17249 AVENUE A	ROSAMOND	93560 May, 2009	TOU-PA-B	70281
GRIMMWAY ENTERPRISES, INC	30508337	TOU-PA-A	V345N-002011	17249 AVENUE A	ROSAMOND	93560 June, 2009	TOU-PA-B	67288
GRIMMWAY ENTERPRISES, INC	30508337	TOU-PA-A	V345N-002011	17249 AVENUE A	ROSAMOND	93560 July, 2009	TOU-PA-B	92160
GRIMMWAY ENTERPRISES, INC	30508337	TOU-PA-A	V345N-002011	17249 AVENUE A	ROSAMOND	93560 August, 2009	TOU-PA-B	59482
GRIMMWAY ENTERPRISES, INC	30508337	TOU-PA-A	V345N-002011	17249 AVENUE A	ROSAMOND	93560 September, 2009	TOU-PA-B	34834
GRIMMWAY ENTERPRISES, INC	30508337	TOU-PA-A	V345N-002011	17249 AVENUE A	ROSAMOND	93560 October, 2009	TOU-PA-B	34839
GRIMMWAY ENTERPRISES, INC	30508337	TOU-PA-A	V345N-002011	17249 AVENUE A	ROSAMOND	93560 November, 2009	TOU-PA-B	663
GRIMMWAY ENTERPRISES, INC	30508337	TOU-PA-A	V345N-002011	17249 AVENUE A	ROSAMOND	93560 December, 2009	TOU-PA-A	0
GRIMMWAY ENTERPRISES, INC	30508337	TOU-PA-A	V345N-002011	17249 AVENUE A	ROSAMOND	93560 January, 2010	TOU-PA-A	0
GRIMMWAY ENTERPRISES, INC	30508337	TOU-PA-A	V345N-002011	17249 AVENUE A	ROSAMOND	93560 February, 2010	TOU-PA-A	4379
GRIMMWAY ENTERPRISES, INC	30508337	TOU-PA-A	V345N-002011	17249 AVENUE A	ROSAMOND	93560 March, 2010	TOU-PA-A	0
GRIMMWAY ENTERPRISES, INC	30508337	TOU-PA-A	V345N-002011	17249 AVENUE A	ROSAMOND	93560 April, 2010	TOU-PA-A	58133
GRIMMWAY ENTERPRISES, INC	30508337	TOU-PA-A	V345N-002011	17249 AVENUE A	ROSAMOND	93560 May, 2010	TOU-PA-A	55454
GRIMMWAY ENTERPRISES, INC	30508337	TOU-PA-A	V345N-002011	17249 AVENUE A	ROSAMOND	93560 June, 2010	TOU-PA-A	104315
GRIMMWAY ENTERPRISES, INC	30508337	TOU-PA-A	V345N-002011	17249 AVENUE A	ROSAMOND	93560 July, 2010	TOU-PA-A	138111
GRIMMWAY ENTERPRISES, INC	30508337	TOU-PA-A	V345N-002011	17249 AVENUE A	ROSAMOND	93560 August, 2010	TOU-PA-A	146224
GRIMMWAY ENTERPRISES, INC	30508337	TOU-PA-A	V345N-002011	17249 AVENUE A	ROSAMOND	93560 September, 2010	TOU-PA-A	79477
GRIMMWAY ENTERPRISES, INC	30508337	TOU-PA-A	V345N-002011	17249 AVENUE A	ROSAMOND	93560 October, 2010	TOU-PA-A	37362
GRIMMWAY ENTERPRISES, INC	30508337	TOU-PA-A	V345N-002011	17249 AVENUE A	ROSAMOND	93560 November, 2010	TOU-PA-A	52048

Lane Well-Grimmway current acct holder
 SCE Past Billing History
 Current S/A #030-5083-37

GRIMMWAY ENTERPRISES, INC	30508337	TOU-PA-A	V345N-002011	17249 AVENUE A	ROSAMOND	93560	December, 2010	TOU-PA-A	0
GRIMMWAY ENTERPRISES, INC	30508337	TOU-PA-A	V345N-002011	17249 AVENUE A	ROSAMOND	93560	January, 2011	TOU-PA-A	0
GRIMMWAY ENTERPRISES, INC	30508337	TOU-PA-A	V345N-002011	17249 AVENUE A	ROSAMOND	93560	February, 2011	TOU-PA-A	3454
GRIMMWAY ENTERPRISES, INC	30508337	TOU-PA-A	V345N-002011	17249 AVENUE A	ROSAMOND	93560	March, 2011	TOU-PA-A	38025
GRIMMWAY ENTERPRISES, INC	30508337	TOU-PA-A	V345N-002011	17249 AVENUE A	ROSAMOND	93560	April, 2011	TOU-PA-A	53988
GRIMMWAY ENTERPRISES, INC	30508337	TOU-PA-A	V345N-002011	17249 AVENUE A	ROSAMOND	93560	May, 2011	TOU-PA-A	128464
GRIMMWAY ENTERPRISES, INC	30508337	TOU-PA-A	V345N-002011	17249 AVENUE A	ROSAMOND	93560	June, 2011	TOU-PA-A	70112
GRIMMWAY ENTERPRISES, INC	30508337	TOU-PA-A	V345N-002011	17249 AVENUE A	ROSAMOND	93560	July, 2011	TOU-PA-A	130514
GRIMMWAY ENTERPRISES, INC	30508337	TOU-PA-A	V345N-002011	17249 AVENUE A	ROSAMOND	93560	August, 2011	TOU-PA-A	77420
GRIMMWAY ENTERPRISES, INC	30508337	TOU-PA-A	V345N-002011	17249 AVENUE A	ROSAMOND	93560	September, 2011	TOU-PA-A	48846
GRIMMWAY ENTERPRISES, INC	30508337	TOU-PA-A	V345N-002011	17249 AVENUE A	ROSAMOND	93560	October, 2011	TOU-PA-A	29832
GRIMMWAY ENTERPRISES, INC	30508337	TOU-PA-A	V345N-002011	17249 AVENUE A	ROSAMOND	93560	November, 2011	TOU-PA-A	18541
GRIMMWAY ENTERPRISES, INC	30508337	TOU-PA-A	V345N-002011	17249 AVENUE A	ROSAMOND	93560	December, 2011	TOU-PA-A	0
GRIMMWAY ENTERPRISES, INC	30508337	TOU-PA-A	V345N-002011	17249 AVENUE A	ROSAMOND	93560	January, 2012	TOU-PA-A	0
GRIMMWAY ENTERPRISES, INC	30508337	TOU-PA-A	V345N-002011	17249 AVENUE A	ROSAMOND	93560	February, 2012	TOU-PA-A	49037
GRIMMWAY ENTERPRISES, INC	30508337	TOU-PA-A	V345N-002011	17249 AVENUE A	ROSAMOND	93560	March, 2012	TOU-PA-A	32862
GRIMMWAY ENTERPRISES, INC	30508337	TOU-PA-A	V345N-002011	17249 AVENUE A	ROSAMOND	93560	April, 2012	TOU-PA-A	0
GRIMMWAY ENTERPRISES, INC	30508337	TOU-PA-A	V345N-002011	17249 AVENUE A	ROSAMOND	93560	May, 2012	TOU-PA-A	86102
GRIMMWAY ENTERPRISES, INC	30508337	TOU-PA-A	V345N-002011	17249 AVENUE A	ROSAMOND	93560	June, 2012	TOU-PA-A	31074
GRIMMWAY ENTERPRISES, INC	30508337	TOU-PA-A	V345N-002011	17249 AVENUE A	ROSAMOND	93560	July, 2012	TOU-PA-A	24198
GRIMMWAY ENTERPRISES, INC	30508337	TOU-PA-A	V345N-002011	17249 AVENUE A	ROSAMOND	93560	August, 2012	TOU-PA-A	0

2010

2011

2012

I INSTALLED
3/23/01

JOB RECORD

Job Name GEORGE LAWE

Location 60TH W & L

Pump Make GOULDS - SUB No. FR437351/V5/6CLC

I. D. Well 16" W/ 8" TOPS. W.L. Total Depth _____

Pump Setting 378 + 1' NIPPLE IN BOWLS & 1' NIPPLE @ TOP
Column Lgth _____ T&S Lgth _____

Column Data: Material GALV Size 4" - 3" TOP Thds/in _____ Butt or Taper

Tubing Date: Material _____ Size _____ Thds/in _____ Left or Right _____

Shaft Data: Material _____ Size _____ Thds/in _____ Left or Right _____

Size Bowls 5 7/8 Stages 8 Suction _____ Disc. 4"

Motor H.P. 2 1/2 Make FRANKLIN RPM 3450 Frame 3 PHASE Type 230V

Misc. 67.0 AMP - 75 AMP MAX

Extension, Future, Col. _____ Tube _____ Shaft _____

Additional Information

LIST BY JOB NAME:

COMPLETE NEW PUMP, MOTOR, WIRE & DROP PIPE - CHECK VALVE
21' UP

~~1" PIPE W/ 3" T&S @ TOP~~

2 AWG CABLE

RECEIVED MAR 26 2001

LANE, FRANK A	2576775 PA-1	D724-9679	42620 60TH ST W	LANCASTER 93536	January, 2000	PA-1	\$98.36	432	20.8	33
LANE, FRANK A	2576775 PA-1	D724-9679	42620 60TH ST W	LANCASTER 93536	January, 2000	PA-1	\$172.27	1236	20.8	28
LANE, FRANK A	2576775 PA-1	D724-9679	42620 60TH ST W	LANCASTER 93536	March, 2000	PA-1	\$121.53	684	20.8	31

Frank Lane
 SCE Past Billing History
 SIA #002-5767-75

LANE, FRANK A	2576775 PA-1	D724-9679	42620 60TH ST W	LANCASTER	93536 April, 2000	PA-1	\$118.21	648	20.8	29
LANE, FRANK A	2576775 PA-1	D724-9679	42620 60TH ST W	LANCASTER	93536 April, 2000	PA-1	\$427.30	4224	20.8	28
LANE, FRANK A	2576775 PA-1	D724-9679	42620 60TH ST W	LANCASTER	93536 June, 2000	PA-1	\$649.88	6432	20.8	33
LANE, FRANK A	2576775 PA-1	D724-9679	42620 60TH ST W	LANCASTER	93536 June, 2000	PA-1	\$862.77	8748	20.8	28
LANE, FRANK A	2576775 PA-1	D724-9679	42620 60TH ST W	LANCASTER	93536 August, 2000	PA-1	\$919.02	9360	20.8	33
LANE, FRANK A	2576775 PA-1	D724-9679	42620 60TH ST W	LANCASTER	93536 September, 2000	PA-1	\$760.19	7632	0	29
LANE, FRANK A	2576775 PA-1	D724-9679	42620 60TH ST W	LANCASTER	93536 October, 2000	PA-1	\$769.01	7728	0	30
LANE, FRANK A	2576775 PA-1	D724-9679	42620 60TH ST W	LANCASTER	93536 November, 2000	PA-1	\$397.29	3268	0	32
LANE, FRANK A	2576775 PA-1	D724-9679	42620 60TH ST W	LANCASTER	93536 December, 2000	PA-1	\$267.12	2684	0	31
LANE, FRANK A	2576775 PA-1	D724-9679	42620 60TH ST W	LANCASTER	93536 January, 2001	PA-1	\$116.00	624	92.9	33
LANE, FRANK A	2576775 PA-1	D724-9679	42620 60TH ST W	LANCASTER	93536 February, 2001	PA-1	\$58.65	0	20.9	29
LANE, FRANK A	2576775 PA-1	D724-9679	42620 60TH ST W	LANCASTER	93536 March, 2001	PA-1	\$58.65	0	0	30
LANE, FRANK A	2576775 PA-1	D724-9679	42620 60TH ST W	LANCASTER	93536 April, 2001	PA-1	\$58.65	0	0	31
LANE, FRANK A	2576775 PA-1	D724-9679	42620 60TH ST W	LANCASTER	93536 May, 2001	PA-1	\$310.49	2856	24	29
LANE, FRANK A	2576775 PA-1	D724-9679	42620 60TH ST W	LANCASTER	93536 June, 2001	PA-1	\$708.08	6372	24.8	30
LANE, FRANK A	2576775 PA-1	D724-9679	42620 60TH ST W	LANCASTER	93536 June, 2001	PA-1	\$889.74	6900	24.8	28
LANE, FRANK A	2576775 PA-1	D724-9679	42620 60TH ST W	LANCASTER	93536 August, 2001	PA-1	\$1,027.25	7896	24.5	33
LANE, FRANK A	2576775 PA-1	D724-9679	42620 60TH ST W	LANCASTER	93536 September, 2001	PA-1	\$935.99	7152	24.5	29
LANE, FRANK A	2576775 PA-1	D724-9679	42620 60TH ST W	LANCASTER	93536 October, 2001	PA-1	\$610.06	5736	24.5	30
LANE, FRANK A	2576775 PA-1	D724-9679	42620 60TH ST W	LANCASTER	93536 November, 2001	PA-1	\$595.95	4380	24.4	32
LANE, FRANK A	2576775 PA-1	D724-9679	42620 60TH ST W	LANCASTER	93536 December, 2001	PA-1	\$126.31	468	24.5	31
LANE, FRANK A	2576775 PA-1	D724-9679	42620 60TH ST W	LANCASTER	93536 January, 2002	PA-1	\$68.90	0	24.5	33
LANE, FRANK A	2576775 PA-1	D724-9679	42620 60TH ST W	LANCASTER	93536 January, 2002	PA-1	\$121.90	432	24.7	28
LANE, FRANK A	2576775 PA-1	D724-9679	42620 60TH ST W	LANCASTER	93536 February, 2002	PA-1	\$545.84	3888	24.7	30
LANE, FRANK A	2576775 PA-1	D724-9679	42620 60TH ST W	LANCASTER	93536 March, 2002	PA-1	\$715.12	5268	24.7	31
LANE, FRANK A	2576775 PA-1	D724-9679	42620 60TH ST W	LANCASTER	93536 April, 2002	PA-1	\$785.31	5892	24.7	29
LANE, FRANK A	2576775 PA-1	D724-9679	42620 60TH ST W	LANCASTER	93536 May, 2002	PA-1	\$1,133.19	8676	24.7	30
LANE, FRANK A	2576775 PA-1	D724-9679	42620 60TH ST W	LANCASTER	93536 July, 2002	PA-1	\$1,468.81	11412	24.7	32
LANE, FRANK A	2576775 PA-1	D724-9679	42620 60TH ST W	LANCASTER	93536 August, 2002	PA-1	\$1,273.03	9816	24.7	29
LANE, FRANK A	2576775 PA-1	D724-9679	42620 60TH ST W	LANCASTER	93536 October, 2002	PA-1	\$1,262.73	9732	24.7	29
LANE, FRANK A	2576775 PA-1	D724-9679	42620 60TH ST W	LANCASTER	93536 November, 2002	PA-1	\$785.07	5832	24.4	30
LANE, FRANK A	2576775 PA-1	D724-9679	42620 60TH ST W	LANCASTER	93536 December, 2002	PA-1	\$449.09	3096	24.7	33
LANE, FRANK A	2576775 PA-1	D724-9679	42620 60TH ST W	LANCASTER	93536 January, 2003	PA-1	\$68.90	0	24.7	31
LANE, FRANK A	2576775 PA-1	D724-9679	42620 60TH ST W	LANCASTER	93536 January, 2003	PA-1	\$189.74	984	24.7	28
LANE, FRANK A	2576775 PA-1	D724-9679	42620 60TH ST W	LANCASTER	93536 March, 2003	PA-1	\$166.16	792	24.7	33
LANE, FRANK A	2576775 PA-1	D724-9679	42620 60TH ST W	LANCASTER	93536 March, 2003	PA-1	\$257.52	1536	24.8	28
LANE, FRANK A	2576775 PA-1	D724-9679	42620 60TH ST W	LANCASTER	93536 May, 2003	PA-1	\$286.72	1884	24.8	30
LANE, FRANK A	2576775 PA-1	D724-9679	42620 60TH ST W	LANCASTER	93536 July, 2003	PA-1	\$963.38	7284	24.8	29
LANE, FRANK A	2576775 PA-1	D724-9679	42620 60TH ST W	LANCASTER	93536 August, 2003	PA-1	\$1,340.62	10356	24.6	32
LANE, FRANK A	2576775 PA-1	D724-9679	42620 60TH ST W	LANCASTER	93536 July, 2003	PA-1	\$1,219.78	9372	24.6	29
LANE, FRANK A	2576775 PA-1	D724-9679	42620 60TH ST W	LANCASTER	93536 October, 2003	PA-1	\$930.86	8100	24.6	29
LANE, FRANK A	2576775 PA-1	D724-9679	42620 60TH ST W	LANCASTER	93536 November, 2003	PA-1	\$353.74	6408	24.7	33
LANE, FRANK A	2576775 PA-1	D724-9679	42620 60TH ST W	LANCASTER	93536 December, 2003	PA-1	\$456.32	3624	24.7	30
LANE, FRANK A	2576775 PA-1	D724-9679	42620 60TH ST W	LANCASTER	93536 January, 2004	PA-1	\$165.18	900	9.4	33
LANE, FRANK A	2576775 PA-1	D724-9679	42620 60TH ST W	LANCASTER	93536 February, 2004	PA-1	\$113.46	420	24.8	31
LANE, FRANK A	2576775 PA-1	D724-9679	42620 60TH ST W	LANCASTER	93536 February, 2004	PA-1	\$205.50	1260	24.8	31
LANE, FRANK A	2576775 PA-1	D724-9679	42620 60TH ST W	LANCASTER	93536 April, 2004	PA-1	\$157.13	840	24.7	29
LANE, FRANK A	2576775 PA-1	D724-9679	42620 60TH ST W	LANCASTER	93536 May, 2004	PA-1	\$442.08	3576	24.7	30
LANE, FRANK A	2576775 PA-1	D724-9679	42620 60TH ST W	LANCASTER	93536 June, 2004	PA-1	\$472.53	3948	24.8	29
LANE, FRANK A	2576775 PA-1	D724-9679	42620 60TH ST W	LANCASTER	93536 June, 2004	PA-1	\$919.92	8256	24.7	32
LANE, FRANK A	2576775 PA-1	D724-9679	42620 60TH ST W	LANCASTER	93536 July, 2004	PA-1	\$1,110.79	10032	24.6	29

Frank Lane
 SCE Past Billing History
 S/A #002-5767-75

LANE, FRANK A	2576775 PA-1	D724-9679	42620 60TH ST W	LANCASTER	93536	August, 2004	PA-1	\$811.18	7140	24.6	30
LANE, FRANK A	2576775 PA-1	D724-9679	42620 60TH ST W	LANCASTER	93536	September, 2004	PA-1	\$762.40	6768	24.6	31
LANE, FRANK A	2576775 PA-1	D724-9679	42620 60TH ST W	LANCASTER	93536	October, 2004	PA-1	\$703.53	6240	24.6	30
LANE, FRANK A	2576775 PA-1	D724-9679	42620 60TH ST W	LANCASTER	93536	November, 2004	PA-1	\$418.67	3312	24.6	33
LANE, FRANK A	2576775 PA-1	D724-9679	42620 60TH ST W	LANCASTER	93536	December, 2004	PA-1	\$101.45	144	24.6	31

LANE, FRANK A	2576775 PA-1	D724-9679	42620 60TH ST W	LANCASTER	93536	January, 2008	PA-1	\$427.00	2580	24.7	33
LANE, FRANK A	2576775 PA-1	D724-9679	42620 60TH ST W	LANCASTER	93536	February, 2008	PA-1	\$160.75	624	24.7	29
LANE, FRANK A	2576775 PA-1	D724-9679	42620 60TH ST W	LANCASTER	93536	February, 2008	PA-1	\$241.20	1224	24.7	29
LANE, FRANK A	2576775 PA-1	D724-9679	42620 60TH ST W	LANCASTER	93536	March, 2008	PA-1	\$650.03	4272	24.7	32
LANE, FRANK A	2576775 PA-1	D724-9679	42620 60TH ST W	LANCASTER	93536	May, 2008	PA-1	\$1,332.86	9168	24.7	30
LANE, FRANK A	2576775 PA-1	D724-9679	42620 60TH ST W	LANCASTER	93536	June, 2008	PA-1	\$1,074.04	7236	24.7	32
LANE, FRANK A	2576775 PA-1	D724-9679	42620 60TH ST W	LANCASTER	93536	July, 2008	PA-1	\$2,025.41	14136	24.7	29

Frank Lane
SCE Past Billing History
S/A #002-5767-75

LANE, FRANK A	2576775 PA-1	D724-9679	42620 60TH ST W	LANCASTER	93536 July, 2008	PA-1	\$1,674.99	11580	24.7	29
LANE, FRANK A	2576775 PA-1	D724-9679	42620 60TH ST W	LANCASTER	93536 August, 2008	PA-1	\$1,990.62	13984	24.6	29
LANE, FRANK A	2576775 PA-1	D724-9679	42620 60TH ST W	LANCASTER	93536 October, 2008	PA-1	\$2,142.69	15072	24.6	33
LANE, FRANK A	2576775 PA-1	D724-9679	42620 60TH ST W	LANCASTER	93536 November, 2008	PA-1	\$1,838.99	12840	24.7	31
LANE, FRANK A	2576775 PA-1	D724-9679	42620 60TH ST W	LANCASTER	93536 November, 2008	PA-1	\$768.77	5064	25	32
LANE, FRANK A	2576775 PA-1	D724-9679	42620 60TH ST W	LANCASTER	93536 January, 2009	PA-1	\$171.60	636	24.6	31
LANE, FRANK A	2576775 PA-1	D724-9679	42620 60TH ST W	LANCASTER	93536 February, 2009	PA-1	\$354.71	2004	24.7	31
LANE, FRANK A	2576775 PA-1	D724-9679	42620 60TH ST W	LANCASTER	93536 March, 2009	PA-1	\$108.53	168	24.6	30
LANE, FRANK A	2576775 PA-1	D724-9679	42620 60TH ST W	LANCASTER	93536 April, 2009	PA-1	\$878.59	6096	24.7	29
LANE, FRANK A	2576775 PA-1	D724-9679	42620 60TH ST W	LANCASTER	93536 May, 2009	PA-1	\$2,211.04	16212	24.6	32
LANE, FRANK A	2576775 PA-1	D724-9679	42620 60TH ST W	LANCASTER	93536 June, 2009	PA-1	\$1,959.58	13788	24.6	30
LANE, FRANK A	2576775 PA-1	D724-9679	42620 60TH ST W	LANCASTER	93536 June, 2009	PA-1	\$1,611.55	11376	24.6	28
LANE, FRANK A	2576775 PA-1	D724-9679	42620 60TH ST W	LANCASTER	93536 June, 2009	PA-1	\$2,102.04	15216	24.6	33
LANE, FRANK A	2576775 PA-1	D724-9679	42620 60TH ST W	LANCASTER	93536 August, 2009	PA-1	\$1,576.47	11340	24.6	28
LANE, FRANK A	2576775 PA-1	D724-9679	42620 60TH ST W	LANCASTER	93536 August, 2009	PA-1	\$1,618.86	11664	24.6	31
LANE, FRANK A	2576775 PA-1	D724-9679	42620 60TH ST W	LANCASTER	93536 October, 2009	PA-1	\$1,162.49	8136	24.6	32
LANE, FRANK A	2576775 PA-1	D724-9679	42620 60TH ST W	LANCASTER	93536 November, 2009	PA-1	\$208.32	900	24.6	31
LANE, FRANK A	2576775 PA-1	D724-9679	42620 60TH ST W	LANCASTER	93536 December, 2009	PA-1	\$210.38	828	24.6	28
LANE, FRANK A	2576775 PA-1	D724-9679	42620 60TH ST W	LANCASTER	93536 December, 2009	PA-1	\$210.38	948	24.6	32
LANE, FRANK A	2576775 PA-1	D724-9679	42620 60TH ST W	LANCASTER	93536 January, 2010	PA-1	\$89.79	0	24.6	31
LANE, FRANK A	2576775 PA-1	D724-9679	42620 60TH ST W	LANCASTER	93536 April, 2010	PA-1	\$829.35	5668	24.5	29
LANE, FRANK A	2576775 PA-1	D724-9679	42620 60TH ST W	LANCASTER	93536 May, 2010	PA-1	\$814.88	5340	24.5	31
LANE, FRANK A	2576775 PA-1	D724-9679	42620 60TH ST W	LANCASTER	93536 June, 2010	PA-1	\$1,848.53	12888	24.5	30
LANE, FRANK A	2576775 PA-1	D724-9679	42620 60TH ST W	LANCASTER	93536 July, 2010	PA-1	\$1,714.47	11784	24.5	29
LANE, FRANK A	2576775 PA-1	D724-9679	42620 60TH ST W	LANCASTER	93536 July, 2010	PA-1	\$1,264.45	8640	24.5	30
LANE, FRANK A	2576775 PA-1	D724-9679	42620 60TH ST W	LANCASTER	93536 September, 2010	PA-1	\$3,424.06	24420	24.5	31
LANE, FRANK A	2576775 PA-1	D724-9679	42620 60TH ST W	LANCASTER	93536 October, 2010	PA-1	\$1,773.80	12300	24.5	30
LANE, FRANK A	2576775 PA-1	D724-9679	42620 60TH ST W	LANCASTER	93536 November, 2010	PA-1	\$677.75	4380	2.4	32
LANE, FRANK A	2576775 PA-1	D724-9679	42620 60TH ST W	LANCASTER	93536 December, 2010	PA-1	\$670.50	4248	30.8	31
LANE, FRANK A	2576775 PA-1	D724-9679	42620 60TH ST W	LANCASTER	93536 January, 2011	PA-1	\$99.09	0	0	32
LANE, FRANK A	2576775 PA-1	D724-9679	42620 60TH ST W	LANCASTER	93536 February, 2011	PA-1	\$266.14	1224	24.5	29
LANE, FRANK A	2576775 PA-1	D724-9679	42620 60TH ST W	LANCASTER	93536 March, 2011	PA-1	\$359.37	1908	24.5	30
LANE, FRANK A	2576775 PA-1	D724-9679	42620 60TH ST W	LANCASTER	93536 March, 2011	PA-1	\$658.99	4140	25.1	28
LANE, FRANK A	2576775 PA-1	D724-9679	42620 60TH ST W	LANCASTER	93536 April, 2011	PA-1	\$797.84	5148	16.7	29
LANE, FRANK A	2576775 PA-1	D724-9679	42620 60TH ST W	LANCASTER	93536 April, 2011	PA-1	\$2,898.02	20592	30.5	33
LANE, FRANK A	2576775 PA-1	D724-9679	42620 60TH ST W	LANCASTER	93536 June, 2011	PA-1	\$2,036.77	15276	24.5	28
LANE, FRANK A	2576775 PA-1	D724-9679	42620 60TH ST W	LANCASTER	93536 June, 2011	PA-1	\$1,892.58	13920	24.4	30
LANE, FRANK A	2576775 PA-1	D724-9679	42620 60TH ST W	LANCASTER	93536 July, 2011	PA-1	\$2,143.23	15840	24.4	31
LANE, FRANK A	2576775 PA-1	D724-9679	42620 60TH ST W	LANCASTER	93536 August, 2011	PA-1	\$1,329.83	9564	24.4	31
LANE, FRANK A	2576775 PA-1	D724-9679	42620 60TH ST W	LANCASTER	93536 October, 2011	PA-1	\$1,070.41	7164	24.5	33
LANE, FRANK A	2576775 PA-1	D724-9679	42620 60TH ST W	LANCASTER	93536 November, 2011	PA-1	\$249.72	1104	6.5	31
LANE, FRANK A	2576775 PA-1	D724-9679	42620 60TH ST W	LANCASTER	93536 December, 2011	PA-1	\$217.38	864	24.5	32
LANE, FRANK A	2576775 PA-1	D724-9679	42620 60TH ST W	LANCASTER	93536 January, 2012	PA-1	\$526.70	3144	24.5	29
LANE, FRANK A	2576775 PA-1	D724-9679	42620 60TH ST W	LANCASTER	93536 February, 2012	PA-1	\$359.61	1908	0	30
LANE, FRANK A	2576775 PA-1	D724-9679	42620 60TH ST W	LANCASTER	93536 March, 2012	PA-1	\$1,172.37	7920	24.5	31
LANE, FRANK A	2576775 PA-1	D724-9679	42620 60TH ST W	LANCASTER	93536 April, 2012	PA-1	\$773.29	4968	0	28
LANE, FRANK A	2576775 PA-1	D724-9679	42620 60TH ST W	LANCASTER	93536 April, 2012	PA-1	\$2,814.11	20064	24.5	32
LANE, FRANK A	2576775 PA-1	D724-9679	42620 60TH ST W	LANCASTER	93536 June, 2012	PA-1	\$2,113.56	14736	0	27
LANE, FRANK A	2576775 PA-1	D724-9679	42620 60TH ST W	LANCASTER	93536 June, 2012	PA-1	\$3,974.76	28368	6.5	33
LANE, FRANK A	2576775 PA-1	D724-9679	42620 60TH ST W	LANCASTER	93536 August, 2012	PA-1	\$593.84	3,642	24.5	29
LANE, FRANK A	2576775 PA-1	D724-9679	42620 60TH ST W	LANCASTER	93536 September, 2012	PA-1	\$2,059.88	14,567	24.0	30
LANE, FRANK A	2576775 PA-1	D724-9679	42620 60TH ST W	LANCASTER	93536 October, 2012	PA-1	\$1,380.61	9,509	24.0	33
LANE, FRANK A	2576775 PA-1	D724-9679	42620 60TH ST W	LANCASTER	93536 November, 2012	PA-1				

JOB RECORD

Pulled 1.10.01

Job Name Lane

Location 5800 W Ave L

Pump Make Grundfos (555-243) No. 1358200-12

I. D. Well _____ S.W.L. 219' Total Depth ~400'

Pump Setting 378' Column Lgth _____ T&S Lgth _____

Column Data: Material GALV steel Size 3" Thds/in _____ Butt or Taper

~~Tubing Data: Material _____ Size _____ Thds/in _____ Left or Right~~

~~Shaft Data: Material _____ Size _____ Thds/in _____ Left or Right~~

Size Bowls _____ Stages _____ Suction _____ Disc. _____

Motor H.P. 20 Make _____ RPM _____ Frame _____ Type _____

Misc. _____

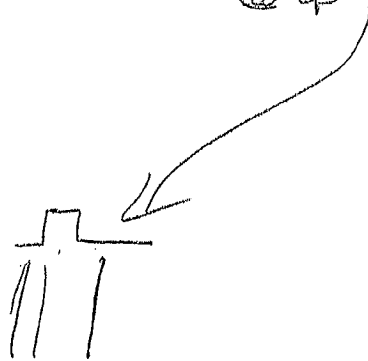
Extension, Future, Col. _____ Tube _____ Shaft _____

4 cable 3 conductors (well diameter not determined - reduced to 3" @)

Additional Information

@ top

LIST BY JOB NAME:



E.J.'S DOMESTIC PUMP REPAIR

PHONE 270-0274
40043 NO. 92ND ST. WEST
LEONA VALLEY, CALIF. 93551

INVOICE

0001011



COPY
Feb 18, 1991

DATE:

SOLD TO	Frank Lane		SHIP TO	942-0435		
	5800 West Ave. 'L'					
	Quartz Hill, Calif. 93534					
CUST. ORDER NO.	DATE SHIPPED	SHIPPED VIA	TERMS	SALESMAN	F.O.B.	OUR ORDER NO.
				E.J.		Verbal
QUANTITY	DESCRIPTION			UNIT PRICE	AMOUNT	
	1..135S200=12 (20hp.) Grunfos 230v				4159.00	
	399' X 3" Galv. Pipe				3109.08	
	415' #4/3 Sub.cable U.L.approved				2178.75	
	1..8" Well seal				82.00	
	1..Delta size 3 Pumping panel				1323.00	
	1..3" D.I. check valve #70,0001b.				185.00	
	1..3" Inline check valve				251.00	
	Material				11287.83	
	Tax (.065)				733.71	
	Sub.Total				12021.54	
	Rig Time				440.00	
	TOTAL DUE				\$12,461.54	

Handwritten notes:
Pd 2-21-91
C. J. [unclear]
6444

Thank You

GRUNDFOS

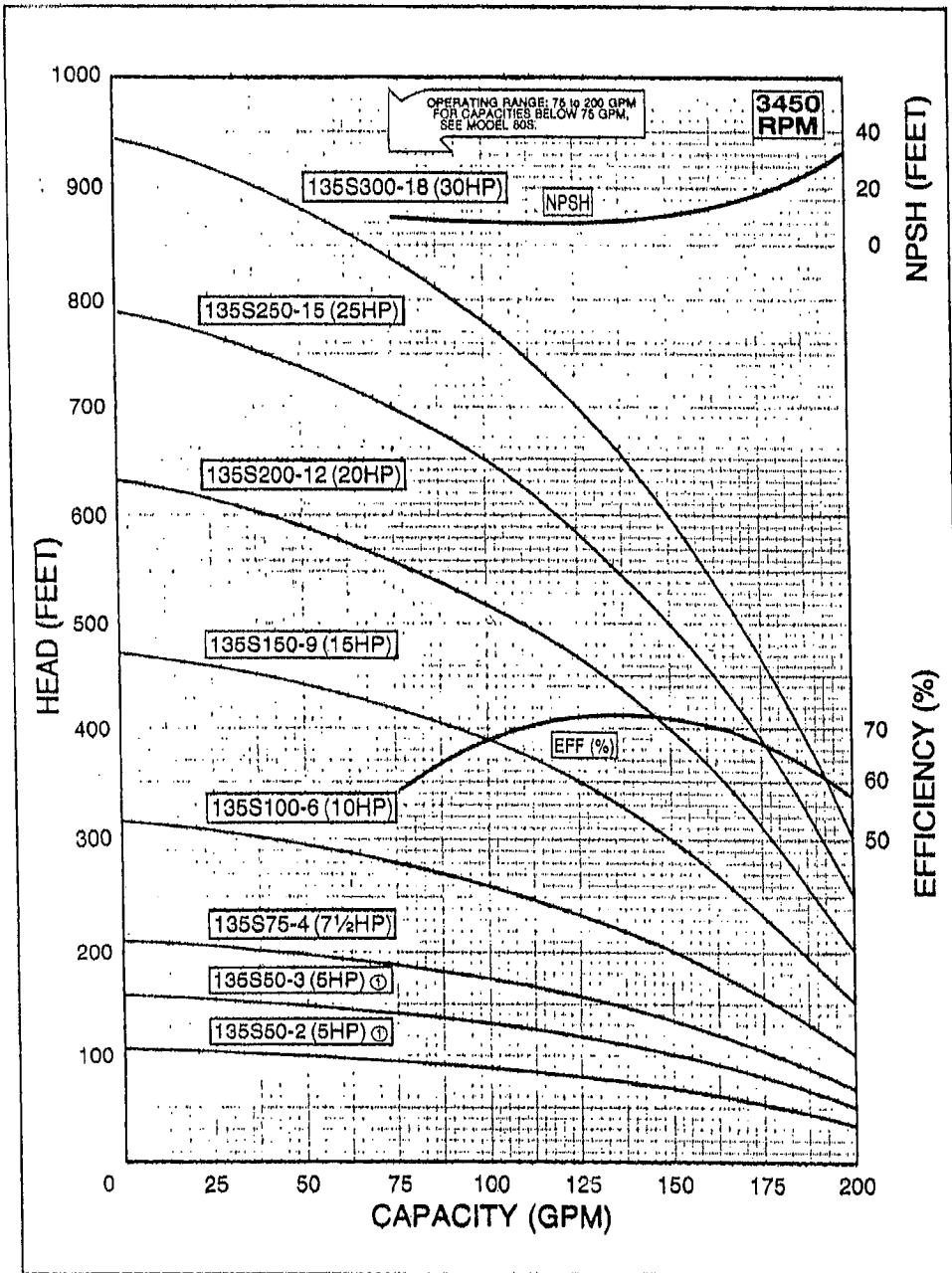
135 GPM

MODEL 135S

PERFORMANCE CURVES

FLOW RANGE
75 to 200 GPM

PUMP OUTLET
3" NPT



DIMENSIONS AND WEIGHTS

MODEL NO.	HP	MIN. WELL SIZE (INCHES)	LENGTH (INCHES)	MAX. WIDTH (INCHES)	APPROX. UNIT SHIPPING WT. (LBS.)
135S50-2	5⓪	6	42 1/2	5 1/2	84
135S50-3	5⓪	6	47	5 1/2	88
135S75-4	7 1/2	6	51 1/2	5 3/4	146
135S100-6	10	6	59 7/8	5 3/4	167
135S150-9	15	6	73	5 3/4	186
135S200-12	20	6	86 1/4	5 3/4	225
135S250-15	25	6	99 1/4	5 3/4	243
135S300-18	30	6	112 3/4	5 3/4	268

NOTES: ⓪ 4-inch motor. Specifications are subject to change without notice.
3-4

4 COPY FEB 18, 1991

DATE:

S O L D TO		SHIP TO		942-0435	
Frank Lane		5800 West Ave. 'L'		Quartz Hill, Calif. 93534	
CUST. ORDER NO.	DATE SHIPPED	SHIPPED VIA	TERMS	SALESMAN	F.O.B.
				E.J.	
DESCRIPTION			OUR ORDER NO.	Verbal	
QUANTITY				UNIT PRICE	AMOUNT
	1..135S200-12 (20hp.)Grunfos 230V				4159.00
	399'X 3" Galv. Pipe				3109.08
	415' #4/3 Sub.cable U.L.approved				2178.75
	1..8" Well seal				82.00
	1..Delta size 3 Pumping panel				1323.00



COPY

Time:

6:49 AM

E.J's Pump & Well Records

Date : Feb 1, 1991
 Name : Frank Lane
 Location : 60th. & Ave 'L'
 City : Quartz Hill
 Pumpset : 399'
 Pipe/Size: 3"
 Pump/Make: 135S200 Grunfos
 Motor : Franklin
 Motor Hp : 20 Hp.
 Voltage...Ph.: Volts 3 Ph.
 Protection:
 Well depth: 425'
 SWL: 230'
 I.D. Well : 16"
 Drilled By:

Time:

6:49 AM

E.J's Pump & Well Records

Date : Feb 27, 1984
 Name : George M. Lane
 Location : Across Aqueduct treatment Plant
 City : Quartz Hill
 Pumpset : 262'
 Pipe/Size: 2"
 Pump/Make: 8' Mill Aermotor
 Motor : Windmill
 Motor Hp : Wind Hp.
 Voltage...Ph.: Volts 0 Ph.
 Protection:
 Well depth: 274'
 SWL: 132'
 I.D. Well : 8"
 Drilled By: Cups 1&13/16ths

ROTTMAN DRILLING COM

FRANK ROTTMAN

LANCASTER,

SHOP 121 WEST AVE. 1
PHONE, OFFICE 1136

RESIDENCE 44717 NO. ELM
PHONE 248-J

Nov. 29

1955

M.

George Lane

P.O. Box 961

Lancaster, Calif.

8% INTEREST CHARGED ON ACCOUNTS OVER 30 DAYS

Installed pipe, Cylinder, rod

and erect owners Windmill

Nov. 25-26-28

14 hrs. 2 Men & rig @ 9.00 per hr.

4 hrs. 3 Men & rig @ 11.00 per hr.

200' x 2" Galv. pipe @ .58 per ft.

36' x 1/2" Galv. pipe @ .43 per ft.

200' x 1 1/2" Ash rod

1 regulator

1 Cylinder

1 Drilling core

1 set pump poles

Bitting

Ben. sp. from Hayward Drift #2439

Cement & set from J. Lane Drift #228

JL Cr# 15809

12-23-55

ROTTMAN DRILLING COM.

FRANK ROTTMAN

LANCASTER,

SHOP 121 WEST AVE. I
PHONE, OFFICE 1136

RESIDENCE 44717 NO. ELM
PHONE 248-J

Dec 22, 1955
M. George Paul

8% INTEREST CHARGED ON ACCOUNTS OVER 30 DAYS

Repair Windmill
pull rod at top

2 Men 3 hrs @ 6.00 per hr

CP

Frank Lane
SCE Past Billing History
S/A #000-6523-33

LANE, FRANKA	652333	GS-1	85-720223	40861	GODDE HILL	PALMDALE	93551	February, 1999	03/03/99	GS-1	\$12.96	0
LANE, FRANKA	652333	GS-1	85-720223	40861	GODDE HILL	PALMDALE	93551	March, 1999	04/01/99	GS-1	\$12.53	0
LANE, FRANKA	652333	GS-1	85-720223	40861	GODDE HILL	PALMDALE	93551	May, 1999	05/03/99	GS-1	\$13.82	0
LANE, FRANKA	652333	GS-1	85-720223	40861	GODDE HILL	PALMDALE	93551	June, 1999	06/02/99	GS-1	\$12.96	0
LANE, FRANKA	652333	GS-1	85-720223	40861	GODDE HILL	PALMDALE	93551	July, 1999	07/01/99	GS-1	\$12.53	0
LANE, FRANKA	652333	GS-1	85-720223	40861	GODDE HILL	PALMDALE	93551	July, 1999	07/30/99	GS-1	\$12.53	0
LANE, FRANKA	652333	GS-1	85-720223	40861	GODDE HILL	PALMDALE	93551	September, 1999	08/31/99	GS-1	\$13.82	0
LANE, FRANKA	652333	GS-1	85-720223	40861	GODDE HILL	PALMDALE	93551	October, 1999	09/30/99	GS-1	\$12.96	0
LANE, FRANKA	652333	GS-1	85-720223	40861	GODDE HILL	PALMDALE	93551	November, 1999	11/01/99	GS-1	\$13.82	0
LANE, FRANKA	652333	GS-1	85-720223	40861	GODDE HILL	PALMDALE	93551	November, 1999	12/01/99	GS-1	\$12.96	0
LANE, FRANKA	652333	GS-1	85-720223	40861	GODDE HILL	PALMDALE	93551	January, 2000	12/01/00	GS-1	\$14.26	0
LANE, FRANKA	652333	GS-1	85-720223	40861	GODDE HILL	PALMDALE	93551	January, 2000	01/03/00	GS-1	\$12.10	0
LANE, FRANKA	652333	GS-1	85-720223	40861	GODDE HILL	PALMDALE	93551	February, 2000	01/31/00	GS-1	\$12.96	0
LANE, FRANKA	652333	GS-1	85-720223	40861	GODDE HILL	PALMDALE	93551	February, 2000	03/30/00	GS-1	\$12.53	0
LANE, FRANKA	652333	GS-1	85-720223	40861	GODDE HILL	PALMDALE	93551	March, 2000	04/28/00	GS-1	\$12.53	0
LANE, FRANKA	652333	GS-1	85-720223	40861	GODDE HILL	PALMDALE	93551	April, 2000	05/30/00	GS-1	\$13.82	0
LANE, FRANKA	652333	GS-1	85-720223	40861	GODDE HILL	PALMDALE	93551	May, 2000	06/29/00	GS-1	\$12.96	0
LANE, FRANKA	652333	GS-1	85-720223	40861	GODDE HILL	PALMDALE	93551	July, 2000	07/28/00	GS-1	\$12.53	0
LANE, FRANKA	652333	GS-1	85-720223	40861	GODDE HILL	PALMDALE	93551	July, 2000	08/29/00	GS-1	\$13.82	0
LANE, FRANKA	652333	GS-1	85-720223	40861	GODDE HILL	PALMDALE	93551	September, 2000	09/28/00	GS-1	\$12.96	0
LANE, FRANKA	652333	GS-1	85-720223	40861	GODDE HILL	PALMDALE	93551	October, 2000	10/30/00	GS-1	\$13.82	0
LANE, FRANKA	652333	GS-1	85-720223	40861	GODDE HILL	PALMDALE	93551	November, 2000	11/30/00	GS-1	\$13.39	0
LANE, FRANKA	652333	GS-1	85-720223	40861	GODDE HILL	PALMDALE	93551	December, 2000	11/30/00	GS-1	\$14.26	0
LANE, FRANKA	652333	GS-1	85-720223	40861	GODDE HILL	PALMDALE	93551	January, 2001	01/02/01	GS-1	\$12.96	0
LANE, FRANKA	652333	GS-1	85-720223	40861	GODDE HILL	PALMDALE	93551	January, 2001	01/30/01	GS-1	\$13.25	10
LANE, FRANKA	652333	GS-1	85-720223	40861	GODDE HILL	PALMDALE	93551	January, 2001	03/02/01	GS-1	\$13.39	0
LANE, FRANKA	652333	GS-1	85-720223	40861	GODDE HILL	PALMDALE	93551	March, 2001	03/30/01	GS-1	\$12.10	0
LANE, FRANKA	652333	GS-1	85-720223	40861	GODDE HILL	PALMDALE	93551	March, 2001	05/01/01	GS-1	\$13.82	0
LANE, FRANKA	652333	GS-1	85-720223	40861	GODDE HILL	PALMDALE	93551	May, 2001	05/30/01	GS-1	\$12.53	0
LANE, FRANKA	652333	GS-1	85-720223	40861	GODDE HILL	PALMDALE	93551	May, 2001	06/28/01	GS-1	\$12.53	0
LANE, FRANKA	652333	GS-1	85-720223	40861	GODDE HILL	PALMDALE	93551	June, 2001	07/31/01	GS-1	\$14.26	0
LANE, FRANKA	652333	GS-1	85-720223	40861	GODDE HILL	PALMDALE	93551	August, 2001	08/28/01	GS-1	\$12.49	2
LANE, FRANKA	652333	GS-1	85-720223	40861	GODDE HILL	PALMDALE	93551	August, 2001	09/27/01	GS-1	\$12.96	0
LANE, FRANKA	652333	GS-1	85-720223	40861	GODDE HILL	PALMDALE	93551	September, 2001	10/30/01	GS-1	\$14.26	0
LANE, FRANKA	652333	GS-1	85-720223	40861	GODDE HILL	PALMDALE	93551	November, 2001	11/30/01	GS-1	\$13.39	0
LANE, FRANKA	652333	GS-1	85-720223	40861	GODDE HILL	PALMDALE	93551	December, 2001	11/30/01	GS-1	\$14.26	0
LANE, FRANKA	652333	GS-1	85-720223	40861	GODDE HILL	PALMDALE	93551	January, 2002	01/02/02	GS-1	\$12.96	0
LANE, FRANKA	652333	GS-1	85-720223	40861	GODDE HILL	PALMDALE	93551	January, 2002	01/30/02	GS-1	\$12.10	0
LANE, FRANKA	652333	GS-1	85-720223	40861	GODDE HILL	PALMDALE	93551	February, 2002	03/01/02	GS-1	\$12.96	0
LANE, FRANKA	652333	GS-1	85-720223	40861	GODDE HILL	PALMDALE	93551	April, 2002	04/02/02	GS-1	\$13.82	0
LANE, FRANKA	652333	GS-1	85-720223	40861	GODDE HILL	PALMDALE	93551	May, 2002	05/01/02	GS-1	\$12.53	0
LANE, FRANKA	652333	GS-1	85-720223	40861	GODDE HILL	PALMDALE	93551	June, 2002	05/31/02	GS-1	\$12.96	0
LANE, FRANKA	652333	GS-1	85-720223	40861	GODDE HILL	PALMDALE	93551	June, 2002	07/01/02	GS-1	\$13.39	0
LANE, FRANKA	652333	GS-1	85-720223	40861	GODDE HILL	PALMDALE	93551	August, 2002	07/31/02	GS-1	\$12.96	0
LANE, FRANKA	652333	GS-1	85-720223	40861	GODDE HILL	PALMDALE	93551	August, 2002	08/28/02	GS-1	\$12.29	1
LANE, FRANKA	652333	GS-1	85-720223	40861	GODDE HILL	PALMDALE	93551	August, 2002	10/07/02	GS-1	\$17.28	0
LANE, FRANKA	652333	GS-1	85-720223	40861	GODDE HILL	PALMDALE	93551	October, 2002	10/30/02	GS-1	\$10.75	6
LANE, FRANKA	652333	GS-1	85-720223	40861	GODDE HILL	PALMDALE	93551	November, 2002	12/02/02	GS-1	\$14.66	3
LANE, FRANKA	652333	GS-1	85-720223	40861	GODDE HILL	PALMDALE	93551	December, 2002	12/02/02	GS-1	\$13.53	1
LANE, FRANKA	652333	GS-1	85-720223	40861	GODDE HILL	PALMDALE	93551	January, 2003	01/02/03	GS-1	\$34.09	127
LANE, FRANKA	652333	GS-1	85-720223	40861	GODDE HILL	PALMDALE	93551	February, 2003	02/10/03	GS-1	\$14.53	37
LANE, FRANKA	652333	GS-1	85-720223	40861	GODDE HILL	PALMDALE	93551	March, 2003	03/04/03	GS-1	\$16.06	26
LANE, FRANKA	652333	GS-1	85-720223	40861	GODDE HILL	PALMDALE	93551	April, 2003	04/02/03	GS-1	\$22.43	73
LANE, FRANKA	652333	GS-1	85-720223	40861	GODDE HILL	PALMDALE	93551	May, 2003	05/02/03	GS-1	\$22.42	55
LANE, FRANKA	652333	GS-1	85-720223	40861	GODDE HILL	PALMDALE	93551	June, 2003	07/01/03	GS-1	\$22.07	48
LANE, FRANKA	652333	GS-1	85-720223	40861	GODDE HILL	PALMDALE	93551	July, 2003	07/30/03	GS-1	\$22.27	49
LANE, FRANKA	652333	GS-1	85-720223	40861	GODDE HILL	PALMDALE	93551	July, 2003	08/28/03	GS-1	\$20.78	51
LANE, FRANKA	652333	GS-1	85-720223	40861	GODDE HILL	PALMDALE	93551	August, 2003	09/30/03	GS-1	\$20.11	55
LANE, FRANKA	652333	GS-1	85-720223	40861	GODDE HILL	PALMDALE	93551	October, 2003	10/30/03	GS-1	\$19.29	50
LANE, FRANKA	652333	GS-1	85-720223	40861	GODDE HILL	PALMDALE	93551	November, 2003	12/02/03	GS-1	\$21.22	58
LANE, FRANKA	652333	GS-1	85-720223	40861	GODDE HILL	PALMDALE	93551	December, 2003	01/02/04	GS-1	\$20.29	58

Frank Lane
SCE Past Billing History
S/A #000-6523-33

LANE, FRANKA	652333	GS-1	85-720223	40861 GODDE HILL	PALMDALE	93551	January, 2004	01/30/04	GS-1	\$19.50	61
LANE, FRANKA	652333	GS-1	85-720223	40861 GODDE HILL	PALMDALE	93551	March, 2004	03/03/04	GS-1	\$23.56	78
LANE, FRANKA	652333	GS-1	85-720223	40861 GODDE HILL	PALMDALE	93551	April, 2004	04/01/04	GS-1	\$20.85	71
LANE, FRANKA	652333	GS-1	85-720223	40861 GODDE HILL	PALMDALE	93551	May, 2004	04/30/04	GS-1	\$18.23	50
LANE, FRANKA	652333	GS-1	85-720223	40861 GODDE HILL	PALMDALE	93551	June, 2004	06/01/04	GS-1	\$19.73	52
LANE, FRANKA	652333	GS-1	85-720223	40861 GODDE HILL	PALMDALE	93551	July, 2004	06/30/04	GS-1	\$26.19	92
LANE, FRANKA	652333	GS-1	85-720223	40861 GODDE HILL	PALMDALE	93551	August, 2004	07/30/04	GS-1	\$26.60	88
LANE, FRANKA	652333	GS-1	85-720223	40861 GODDE HILL	PALMDALE	93551	September, 2004	08/30/04	GS-1	\$45.70	199
LANE, FRANKA	652333	GS-1	85-720223	40861 GODDE HILL	PALMDALE	93551	October, 2004	09/29/04	GS-1	\$43.51	186
LANE, FRANKA	652333	GS-1	85-720223	40861 GODDE HILL	PALMDALE	93551	November, 2004	11/01/04	GS-1	\$38.69	175
LANE, FRANKA	652333	GS-1	85-720223	40861 GODDE HILL	PALMDALE	93551	December, 2004	12/02/04	GS-1	\$35.00	167
LANE, FRANKA	652333	GS-1	85-720223	40861 GODDE HILL	PALMDALE	93551	January, 2005	01/03/05	GS-1	\$37.00	170
LANE, FRANKA	652333	GS-1	85-720223	40861 GODDE HILL	PALMDALE	93551	February, 2005	02/01/05	GS-1	\$27.16	102
LANE, FRANKA	652333	GS-1	85-720223	40861 GODDE HILL	PALMDALE	93551	February, 2005	03/02/05	GS-1	\$28.01	109
LANE, FRANKA	652333	GS-1	85-720223	40861 GODDE HILL	PALMDALE	93551	April, 2005	04/01/05	GS-1	\$36.14	174
LANE, FRANKA	652333	GS-1	85-720223	40861 GODDE HILL	PALMDALE	93551	May, 2005	05/02/05	GS-1	\$48.91	288
LANE, FRANKA	652333	GS-1	85-720223	40861 GODDE HILL	PALMDALE	93551	June, 2005	06/01/05	GS-1	\$35.61	188
LANE, FRANKA	652333	GS-1	85-720223	40861 GODDE HILL	PALMDALE	93551	July, 2005	06/30/05	GS-1	\$52.12	243
LANE, FRANKA	652333	GS-1	85-720223	40861 GODDE HILL	PALMDALE	93551	August, 2005	08/01/05	GS-1	\$46.54	189
LANE, FRANKA	652333	GS-1	85-720223	40861 GODDE HILL	PALMDALE	93551	September, 2005	08/30/05	GS-1	\$44.56	186
LANE, FRANKA	652333	GS-1	85-720223	40861 GODDE HILL	PALMDALE	93551	October, 2005	09/29/05	GS-1	\$35.27	128
LANE, FRANKA	652333	GS-1	85-720223	40861 GODDE HILL	PALMDALE	93551	November, 2005	11/01/05	GS-1	\$33.17	146
LANE, FRANKA	652333	GS-1	85-720223	40861 GODDE HILL	PALMDALE	93551	November, 2005	12/01/05	GS-1	\$21.56	64
LANE, FRANKA	652333	GS-1	85-720223	40861 GODDE HILL	PALMDALE	93551	January, 2006	01/03/06	GS-1	\$47.74	276
LANE, FRANKA	652333	GS-1	85-720223	40861 GODDE HILL	PALMDALE	93551	February, 2006	02/01/06	GS-1	\$35.95	177
LANE, FRANKA	652333	GS-1	85-720223	40861 GODDE HILL	PALMDALE	93551	March, 2006	03/03/06	GS-1	\$40.96	202
LANE, FRANKA	652333	GS-1	85-720223	40861 GODDE HILL	PALMDALE	93551	April, 2006	04/03/06	GS-1	\$43.82	218
LANE, FRANKA	652333	GS-1	85-720223	40861 GODDE HILL	PALMDALE	93551	May, 2006	05/02/06	GS-1	\$36.70	173
LANE, FRANKA	652333	GS-1	85-720223	40861 GODDE HILL	PALMDALE	93551	June, 2006	06/01/06	GS-1	\$39.00	187
LANE, FRANKA	652333	GS-1	85-720223	40861 GODDE HILL	PALMDALE	93551	July, 2006	06/30/06	GS-1	\$56.21	220
LANE, FRANKA	652333	GS-1	85-720223	40861 GODDE HILL	PALMDALE	93551	August, 2006	08/01/06	GS-1	\$56.94	209
LANE, FRANKA	652333	GS-1	85-720223	40861 GODDE HILL	PALMDALE	93551	September, 2006	08/30/06	GS-1	\$47.80	206
LANE, FRANKA	652333	GS-1	85-720223	40861 GODDE HILL	PALMDALE	93551	October, 2006	09/29/06	GS-1	\$34.79	128
LANE, FRANKA	652333	GS-1	85-720223	40861 GODDE HILL	PALMDALE	93551	November, 2006	10/31/06	GS-1	\$56.91	257
LANE, FRANKA	652333	GS-1	85-720223	40861 GODDE HILL	PALMDALE	93551	December, 2006	12/01/06	GS-1	\$46.38	198
LANE, FRANKA	652333	GS-1	85-720223	40861 GODDE HILL	PALMDALE	93551	January, 2007	01/02/07	GS-1	\$45.66	191
LANE, FRANKA	652333	GS-1	85-720223	40861 GODDE HILL	PALMDALE	93551	January, 2007	01/30/07	GS-1	\$41.13	179
LANE, FRANKA	652333	GS-1	85-720223	40861 GODDE HILL	PALMDALE	93551	February, 2007	03/01/07	GS-1	\$47.22	209
LANE, FRANKA	652333	GS-1	85-720223	40861 GODDE HILL	PALMDALE	93551	April, 2007	04/02/07	GS-1	\$40.10	163
LANE, FRANKA	652333	GS-1	85-720223	40861 GODDE HILL	PALMDALE	93551	May, 2007	05/01/07	GS-1	\$39.20	157
LANE, FRANKA	652333	GS-1	85-720223	40861 GODDE HILL	PALMDALE	93551	June, 2007	05/30/07	GS-1	\$36.81	141
LANE, FRANKA	652333	GS-1	85-720223	40861 GODDE HILL	PALMDALE	93551	June, 2007	06/28/07	GS-1	\$43.36	181
LANE, FRANKA	652333	GS-1	85-720223	40861 GODDE HILL	PALMDALE	93551	August, 2007	07/31/07	GS-1	\$46.70	188
LANE, FRANKA	652333	GS-1	85-720223	40861 GODDE HILL	PALMDALE	93551	September, 2007	08/29/07	GS-1	\$41.66	169
LANE, FRANKA	652333	GS-1	85-720223	40861 GODDE HILL	PALMDALE	93551	September, 2007	09/27/07	GS-1	\$37.22	141
LANE, FRANKA	652333	GS-1	85-720223	40861 GODDE HILL	PALMDALE	93551	November, 2007	10/30/07	GS-1	\$41.67	159
LANE, FRANKA	652333	GS-1	85-720223	40861 GODDE HILL	PALMDALE	93551	December, 2007	11/30/07	GS-1	\$38.13	144
LANE, FRANKA	652333	GS-1	85-720223	40861 GODDE HILL	PALMDALE	93551	January, 2008	01/02/08	GS-1	\$39.14	144
LANE, FRANKA	652333	GS-1	85-720223	40861 GODDE HILL	PALMDALE	93551	February, 2008	01/31/08	GS-1	\$37.69	150
LANE, FRANKA	652333	GS-1	85-720223	40861 GODDE HILL	PALMDALE	93551	February, 2008	02/29/08	GS-1	\$36.93	145
LANE, FRANKA	652333	GS-1	85-720223	40861 GODDE HILL	PALMDALE	93551	March, 2008	04/01/08	GS-1	\$42.26	169
LANE, FRANKA	652333	GS-1	85-720223	40861 GODDE HILL	PALMDALE	93551	May, 2008	05/01/08	GS-1	\$40.40	160
LANE, FRANKA	652333	GS-1	85-720223	40861 GODDE HILL	PALMDALE	93551	May, 2008	05/30/08	GS-1	\$39.05	154
LANE, FRANKA	652333	GS-1	85-720223	40861 GODDE HILL	PALMDALE	93551	July, 2008	07/01/08	GS-1	\$55.07	245
LANE, FRANKA	652333	GS-1	85-720223	40861 GODDE HILL	PALMDALE	93551	July, 2008	07/30/08	GS-1	\$51.47	232
LANE, FRANKA	652333	GS-1	85-720223	40861 GODDE HILL	PALMDALE	93551	September, 2008	08/29/08	GS-1	\$43.41	175
LANE, FRANKA	652333	GS-1	85-720223	40861 GODDE HILL	PALMDALE	93551	October, 2008	09/30/08	GS-1	\$60.67	283
LANE, FRANKA	652333	GS-1	85-720223	40861 GODDE HILL	PALMDALE	93551	November, 2008	10/31/08	GS-1	\$49.30	216
LANE, FRANKA	652333	GS-1	85-720223	40861 GODDE HILL	PALMDALE	93551	December, 2008	12/03/08	GS-1	\$40.94	153

Frank Lane
 SCE Past Billing History
 S/A #000-6523-33

LANE, FRANKA	652333	GS-1	85-720223	40861 GODDE HILL	PALMDALE	93551	January, 2009	01/02/09	GS-1	\$36.04	131
LANE, FRANKA	652333	GS-1	85-720223	40861 GODDE HILL	PALMDALE	93551	February, 2009	02/02/09	GS-1	\$68.24	350
LANE, FRANKA	652333	GS-1	85-720223	40861 GODDE HILL	PALMDALE	93551	February, 2009	03/03/09	GS-1	\$42.92	183
LANE, FRANKA	652333	GS-1	85-720223	40861 GODDE HILL	PALMDALE	93551	March, 2009	04/01/09	GS-1	\$45.39	203
LANE, FRANKA	652333	GS-1	85-720223	40861 GODDE HILL	PALMDALE	93551	May, 2009	05/04/09	GS-1	\$57.00	245
LANE, FRANKA	652333	GS-1	85-720223	40861 GODDE HILL	PALMDALE	93551	June, 2009	06/03/09	GS-1	\$43.37	159
LANE, FRANKA	652333	GS-1	85-720223	40861 GODDE HILL	PALMDALE	93551	July, 2009	07/02/09	GS-1	\$61.05	276
LANE, FRANKA	652333	GS-1	85-720223	40861 GODDE HILL	PALMDALE	93551	August, 2009	08/03/09	GS-1	\$56.41	235
LANE, FRANKA	652333	GS-1	85-720223	40861 GODDE HILL	PALMDALE	93551	August, 2009	08/31/09	GS-1	\$56.88	257
LANE, FRANKA	652333	GS-1	85-720223	40861 GODDE HILL	PALMDALE	93551	October, 2009	10/01/09	GS-1	\$58.36	284
LANE, FRANKA	652333	GS-1	85-720223	40861 GODDE HILL	PALMDALE	93551	November, 2009	11/02/09	GS-1	\$51.33	253
LANE, FRANKA	652333	GS-1	85-720223	40861 GODDE HILL	PALMDALE	93551	December, 2009	12/03/09	GS-1	\$50.62	232
LANE, FRANKA	652333	GS-1	85-720223	40861 GODDE HILL	PALMDALE	93551	December, 2009	12/31/09	GS-1	\$43.99	196
LANE, FRANKA	652333	GS-1	85-720223	40861 GODDE HILL	PALMDALE	93551	February, 2010	02/02/10	GS-1	\$47.21	203
LANE, FRANKA	652333	GS-1	85-720223	40861 GODDE HILL	PALMDALE	93551	February, 2010	03/03/10	GS-1	\$42.18	182
LANE, FRANKA	652333	GS-1	85-720223	40861 GODDE HILL	PALMDALE	93551	April, 2010	04/02/10	GS-1	\$46.42	188
LANE, FRANKA	652333	GS-1	85-720223	40861 GODDE HILL	PALMDALE	93551	April, 2010	04/30/10	GS-1	\$42.21	166
LANE, FRANKA	652333	GS-1	85-720223	40861 GODDE HILL	PALMDALE	93551	June, 2010	06/02/10	GS-1	\$53.53	219
LANE, FRANKA	652333	GS-1	85-720223	40861 GODDE HILL	PALMDALE	93551	July, 2010	07/01/10	GS-1	\$62.62	224
LANE, FRANKA	652333	GS-1	85-720223	40861 GODDE HILL	PALMDALE	93551	July, 2010	07/31/10	GS-1	\$64.25	233
LANE, FRANKA	652333	GS-1	85-720223	40861 GODDE HILL	PALMDALE	93551	September, 2010	08/31/10	GS-1	\$66.78	241
LANE, FRANKA	652333	GS-1	85-720223	40861 GODDE HILL	PALMDALE	93551	September, 2010	09/29/10	GS-1	\$66.91	249
LANE, FRANKA	652333	GS-1	85-720223	40861 GODDE HILL	PALMDALE	93551	September, 2010	11/01/10	GS-1	\$56.93	246
LANE, FRANKA	652333	GS-1	85-720223	40861 GODDE HILL	PALMDALE	93551	November, 2010	11/01/10	GS-1	\$46.60	187
LANE, FRANKA	652333	GS-1	85-720223	40861 GODDE HILL	PALMDALE	93551	November, 2010	12/01/10	GS-1	\$47.50	199
LANE, FRANKA	652333	GS-1	85-720223	40861 GODDE HILL	PALMDALE	93551	December, 2010	12/30/10	GS-1	\$62.18	285
LANE, FRANKA	652333	GS-1	85-720223	40861 GODDE HILL	PALMDALE	93551	December, 2010	02/01/11	GS-1	\$54.43	249
LANE, FRANKA	652333	GS-1	85-720223	40861 GODDE HILL	PALMDALE	93551	February, 2011	03/02/11	GS-1	\$44.21	173
LANE, FRANKA	652333	GS-1	85-720223	40861 GODDE HILL	PALMDALE	93551	March, 2011	03/31/11	GS-1	\$50.48	214
LANE, FRANKA	652333	GS-1	85-720223	40861 GODDE HILL	PALMDALE	93551	April, 2011	04/30/11	GS-1	\$52.19	221
LANE, FRANKA	652333	GS-1	85-720223	40861 GODDE HILL	PALMDALE	93551	May, 2011	05/31/11	GS-1	\$60.26	226
LANE, FRANKA	652333	GS-1	85-720223	40861 GODDE HILL	PALMDALE	93551	July, 2011	06/30/11	GS-1	\$85.81	359
LANE, FRANKA	652333	GS-1	85-720223	40861 GODDE HILL	PALMDALE	93551	August, 2011	08/01/11	GS-1	\$44.06	131
LANE, FRANKA	652333	GS-1	85-720223	40861 GODDE HILL	PALMDALE	93551	September, 2011	08/30/11	GS-1	\$62.25	232
LANE, FRANKA	652333	GS-1	85-720223	40861 GODDE HILL	PALMDALE	93551	October, 2011	09/29/11	GS-1	\$61.37	277
LANE, FRANKA	652333	GS-1	85-720223	40861 GODDE HILL	PALMDALE	93551	November, 2011	11/01/11	GS-1	\$53.05	231
LANE, FRANKA	652333	GS-1	85-720223	40861 GODDE HILL	PALMDALE	93551	December, 2011	12/02/11	GS-1	\$45.73	192
LANE, FRANKA	652333	GS-1	85-720223	40861 GODDE HILL	PALMDALE	93551	December, 2011	12/30/11	GS-1	\$69.03	347
LANE, FRANKA	652333	GS-1	85-720223	40861 GODDE HILL	PALMDALE	93551	February, 2012	02/01/12	GS-1	\$52.07	233
LANE, FRANKA	652333	GS-1	85-720223	40861 GODDE HILL	PALMDALE	93551	March, 2012	03/02/12	GS-1	\$52.92	251
LANE, FRANKA	652333	GS-1	85-720223	40861 GODDE HILL	PALMDALE	93551	March, 2012	03/30/12	GS-1	\$51.24	221
LANE, FRANKA	652333	GS-1	85-720223	40861 GODDE HILL	PALMDALE	93551	April, 2012	04/30/12	GS-1	\$51.24	221
LANE, FRANKA	652333	GS-1	85-720223	40861 GODDE HILL	PALMDALE	93551	June, 2012	05/31/12	GS-1	\$60.00	211
LANE, FRANKA	652333	GS-1	85-720223	40861 GODDE HILL	PALMDALE	93551	June, 2012	06/28/12	GS-1	\$91.48	359
LANE, FRANKA	652333	GS-1	85-720223	40861 GODDE HILL	PALMDALE	93551	July, 2012	07/30/12	GS-1		

Frank Lane
SCE Past Billing History
S/A #00-6523-33

Maximum KW	Billing Days
0.0	50
0.0	8
0.0	30
0.0	28
0.0	33
0.0	30
0.0	28
0.0	33
0.0	28
0.0	29
0.0	33
0.0	32
0.0	30
0.0	29
0.0	33
0.0	30
0.0	29
0.0	33
0.0	29
0.0	29
0.0	29
0.0	29
0.0	28
0.0	31
0.0	28
0.0	32
0.0	30
0.0	34
0.0	21
0.0	34
0.0	58
0.0	29
0.0	28
0.0	33
0.0	29
0.0	33
0.0	32
0.0	33
0.0	29
0.0	29
0.0	27
0.0	30
0.0	33
0.0	29
0.0	34
0.0	29
0.0	28
0.0	33
0.0	35
0.0	28

Frank Lane
SCE Past Billing History
S/A #000-6523-33

0.0	28
0.0	29
0.0	30
0.0	34
0.0	28
0.0	33
0.0	29
0.0	29
0.0	33
0.0	29
0.0	35
0.0	28
0.0	29
0.0	30
0.0	30
0.0	28
0.0	32
0.0	30
0.0	32
0.0	29
0.0	29
0.0	30
0.0	33
0.0	35
0.0	28
0.0	30
0.0	31
0.0	29
0.0	31
0.0	32
0.0	31
0.0	32
0.0	29
0.0	30
0.0	33
0.0	30
0.0	28
0.0	31
0.0	29
0.0	29
0.0	28
0.0	30
0.0	31
0.0	58
0.0	33
0.0	31
0.0	33
0.0	31
0.0	31
0.0	36
0.0	22
0.0	29
0.0	29
0.0	32
0.0	31
0.0	29
0.0	31
0.0	30
0.0	30
0.0	33
0.0	33
0.0	33
0.0	28

Frank Lane
SCE Past Billing History
S/A #000-6523-33

0.0	30
0.0	29
0.0	32
0.0	30
0.0	29
0.0	29
0.0	32
0.0	30
0.0	32
0.0	30
0.0	33
0.0	28
0.0	30
0.0	29
0.0	29
0.0	32
0.0	30
0.0	32
0.0	31
0.0	33
0.0	28
0.0	31
0.0	28
0.0	32
0.0	29
0.0	29
0.0	33
0.0	28
0.0	30
0.0	33
0.0	31
0.0	33
0.0	28
0.0	30
0.0	32
0.0	29
0.0	31
0.0	30
0.0	28
0.0	40
0.0	23
0.0	33
0.0	31
0.0	38
0.0	22
0.0	29
0.0	29
0.0	28
0.0	32
0.0	29
0.0	29
0.0	29
0.0	33
0.0	30
0.0	33
0.0	31

Frank Lane
SCE Past Billing History
S/A #000-6523-33

0.0	28
0.0	33
0.0	29
0.0	29
0.0	29
0.0	32
0.0	29
0.0	30
0.0	31
0.0	30
0.0	33
0.0	31
0.0	32
0.0	29
0.0	29
0.0	29
0.0	30
0.0	31
0.0	30
0.0	29
0.0	32
0.0	29
0.0	30
0.0	33
0.0	30
0.0	33
0.0	30
0.0	29
0.0	30
0.0	31
0.0	29
0.0	30
0.0	29
0.0	32
0.0	28
0.0	30
0.0	32
0.0	29
0.0	29
0.0	29
0.0	33
0.0	29
0.0	29
0.0	33
0.0	31
0.0	33
0.0	29
0.0	29
0.0	32
0.0	30
0.0	29
0.0	32
0.0	30
0.0	32
0.0	31
0.0	33

Frank Lane
SCE Past Billing History
S/A #000-6523-33

0.0	30
0.0	31
0.0	29
0.0	29
0.0	33
0.0	30
0.0	29
0.0	32
0.0	28
0.0	31
0.0	32
0.0	31
0.0	28
0.0	33
0.0	29
0.0	30
0.0	28
0.0	33
0.0	29
0.0	30
0.0	31
0.0	29
0.0	33
0.0	30
0.0	29
0.0	33
0.0	30
0.0	29
0.0	31
0.0	30
0.0	32
0.0	29
0.0	30
0.0	33
0.0	31
0.0	28
0.0	33
0.0	30
0.0	28
0.0	31
0.0	31
0.0	28
0.0	32

MEMORANDUM

TO: George Lane

FROM: Joshua T. Nord, PE
Pars Topjian, PE

SUBJECT: Monte Vista Pipeline Extension
Preliminary Pump Selection (Revised)

February 24, 2004

Hydraulics & Pump Selection:

Revised hydraulic calculations have been prepared for the Monte Vista Pipeline Extension based upon the reduction in the pipeline diameter and relocation of the high point tank to a point approximately 1250 feet west (see attached Pump Coverage graph). The pumps that were previously selected for the project (see memorandum dated November 24, 2003) were checked to see if they would work under the new higher head conditions. It was determined that the two pumps listed below will still work in this application at reasonable efficiencies (see attached pump curves). Please note that a combination air-release and vacuum valve will be required at the high point (elevation 3682 ft) to vent air from the pipeline during startup and also to allow the pipeline to drain downstream of the high point after shut down of the pump. The two preliminary pump selections are as listed below (suppliers such as Rottman Drilling (661) 942-6125 and John Lisee Pumps (562) 927-2623 can be consulted for additional assistance in pump selection and pricing):

Pump Model	Pipe Dia. (in)	Flow (gpm)	TIDH (ft)	Horsepower	Efficiency
Aurora 392-15	2.5 & 2.0	31.5	430	5.5	64%
Goulds 3SV 8-13	2.5 & 2.0	39	455	7.5	60%

Electrical Discussion:

Assuming the motor horsepower will not exceed 10 hp, the following should be taken into consideration. Service planner Jacky Harper (Tel 1-661-726-5635) at the serving utility company (Southern California Edison) provided the following information: Edison will not have to change their service equipment as the serving transformer is 15 KVA and Service is 200 Amperes, both of which can handle the additional 10 HP load.

The problem we have to deal with on the load side of the service meter is the voltage dip caused by the starting current of the motor on the starter, which may drop out above a certain value, normally 30%. According to my calculations, the voltage dip at the motor will be over 30% due to the long run between the service meter and the pump motor (approximately 450 ft). Voltage dip in the cable alone will be about 34%. Another 8% voltage dip will occur in the utility transformer and another 10% dip will occur in the service cable, bringing the total dip to approximately 52%.

To reduce this dip, we can oversize the cable from service meter to the motor. If we double the cable size the dip would be halved (down from 34% to 17%). We cannot do much with the rest as they are part of Edison's system, and their position is that as long as the load does not exceed the service, they

Memorandum To: George Lane
Page 2

February 24, 2004

would not change anything. Hence an 18% dip due to Edison's transformer and service cable cannot be reduced. With the 17% dip, the total would come to 35%, still higher than the 30% threshold. Further oversizing the 450 ft long motor feeder could help reduce the dip further, but would not be economical.

In order for the starter to hold during starting, we therefore recommend locating it (i.e. the starter) adjacent to the service meter and not at the pump. If the operation of the pump is desired to be performed from a location near the pump, then an on-off pushbutton station can be added there, with control wires running back to the starter. A second option could be adding a disconnect switch at the pump. The starter in this case would be turned on continuously and the pump turned on and off locally from this disconnect. I would recommend the on-off switch option if the pump is going to be operated occasionally. The second option would be OK if the pump is going to be operated most of the time. The idea is not to leave the starter energized unnecessarily when it is not running the pump.

Frank Lane
 SCE Past Billing History
 S/A #000-4557-02

LANE, FRANKA	455702	GS-1	222013-994192	40841	GODDE HILL ROAD	QUARTZ HILL	93536	June, 1996	05/31/96	GS-1	\$14.95	0
LANE, FRANKA	455702	GS-1	222013-994192	40841	GODDE HILL ROAD	QUARTZ HILL	93536	July, 1996	07/02/96	GS-1	\$15.36	0
LANE, FRANKA	455702	GS-1	222013-994192	40841	GODDE HILL ROAD	QUARTZ HILL	93536	August, 1996	08/02/96	GS-1	\$14.88	0
LANE, FRANKA	455702	GS-1	222013-994192	40841	GODDE HILL ROAD	QUARTZ HILL	93536	September, 1996	09/03/96	GS-1	\$15.36	0
LANE, FRANKA	455702	GS-1	222013-994192	40841	GODDE HILL ROAD	QUARTZ HILL	93536	October, 1996	10/02/96	GS-1	\$13.92	0
LANE, FRANKA	455702	GS-1	222013-994192	40841	GODDE HILL ROAD	QUARTZ HILL	93536	November, 1996	11/01/96	GS-1	\$14.40	0
LANE, FRANKA	455702	GS-1	222013-994192	40841	GODDE HILL ROAD	QUARTZ HILL	93536	December, 1996	12/04/96	GS-1	\$15.84	0
LANE, FRANKA	455702	GS-1	222013-994192	40841	GODDE HILL ROAD	QUARTZ HILL	93536	January, 1997	01/03/97	GS-1	\$14.40	0
LANE, FRANKA	455702	GS-1	222013-994192	40841	GODDE HILL ROAD	QUARTZ HILL	93536	February, 1997	01/31/97	GS-1	\$13.44	0
LANE, FRANKA	455702	GS-1	222013-994192	40841	GODDE HILL ROAD	QUARTZ HILL	93536	February, 1997	03/03/97	GS-1	\$14.88	0
LANE, FRANKA	455702	GS-1	222013-994192	40841	GODDE HILL ROAD	QUARTZ HILL	93536	March, 1997	04/01/97	GS-1	\$13.92	0
LANE, FRANKA	455702	GS-1	222013-994192	40841	GODDE HILL ROAD	QUARTZ HILL	93536	April, 1997	04/30/97	GS-1	\$14.40	0
LANE, FRANKA	455702	GS-1	222013-994192	40841	GODDE HILL ROAD	QUARTZ HILL	93536	May, 1997	05/30/97	GS-1	\$14.88	0
LANE, FRANKA	455702	GS-1	222013-994192	40841	GODDE HILL ROAD	QUARTZ HILL	93536	June, 1997	06/30/97	GS-1	\$14.40	0
LANE, FRANKA	455702	GS-1	222013-994192	40841	GODDE HILL ROAD	QUARTZ HILL	93536	July, 1997	07/30/97	GS-1	\$13.44	0
LANE, FRANKA	455702	GS-1	222013-994192	40841	GODDE HILL ROAD	QUARTZ HILL	93536	August, 1997	08/27/97	GS-1	\$15.84	0
LANE, FRANKA	455702	GS-1	222013-994192	40841	GODDE HILL ROAD	QUARTZ HILL	93536	September, 1997	09/29/97	GS-1	\$14.88	0
LANE, FRANKA	455702	GS-1	222013-994192	40841	GODDE HILL ROAD	QUARTZ HILL	93536	November, 1997	10/30/97	GS-1	\$15.84	0
LANE, FRANKA	455702	GS-1	222013-994192	40841	GODDE HILL ROAD	QUARTZ HILL	93536	December, 1997	12/02/97	GS-1	\$14.88	0
LANE, FRANKA	455702	GS-1	222013-994192	40841	GODDE HILL ROAD	QUARTZ HILL	93536	January, 1998	01/02/98	GS-1	\$13.39	0
LANE, FRANKA	455702	GS-1	222013-994192	40841	GODDE HILL ROAD	QUARTZ HILL	93536	February, 1998	02/02/98	GS-1	\$14.83	0
LANE, FRANKA	455702	GS-1	222013-994192	40841	GODDE HILL ROAD	QUARTZ HILL	93536	March, 1998	03/10/98	GS-1	\$15.55	0
LANE, FRANKA	455702	GS-1	222013-994192	40841	GODDE HILL ROAD	QUARTZ HILL	93536	March, 1998	04/01/98	GS-1	\$9.50	0
LANE, FRANKA	455702	GS-1	222013-994192	40841	GODDE HILL ROAD	QUARTZ HILL	93536	April, 1998	04/30/98	GS-1	\$12.53	0
LANE, FRANKA	455702	GS-1	222013-994192	40841	GODDE HILL ROAD	QUARTZ HILL	93536	May, 1998	06/01/98	GS-1	\$13.82	0
LANE, FRANKA	455702	GS-1	222013-994192	40841	GODDE HILL ROAD	QUARTZ HILL	93536	July, 1998	07/02/98	GS-1	\$13.39	0
LANE, FRANKA	455702	GS-1	222013-994192	40841	GODDE HILL ROAD	QUARTZ HILL	93536	August, 1998	07/31/98	GS-1	\$12.53	0
LANE, FRANKA	455702	GS-1	222013-994192	40841	GODDE HILL ROAD	QUARTZ HILL	93536	September, 1998	08/31/98	GS-1	\$13.39	0
LANE, FRANKA	455702	GS-1	222013-994192	40841	GODDE HILL ROAD	QUARTZ HILL	93536	October, 1998	09/30/98	GS-1	\$12.96	0
LANE, FRANKA	455702	GS-1	222013-994192	40841	GODDE HILL ROAD	QUARTZ HILL	93536	November, 1998	10/30/98	GS-1	\$12.96	0
LANE, FRANKA	455702	GS-1	222013-994192	40841	GODDE HILL ROAD	QUARTZ HILL	93536	December, 1998	12/02/98	GS-1	\$14.26	0
LANE, FRANKA	455702	GS-1	222013-994192	40841	GODDE HILL ROAD	QUARTZ HILL	93536	January, 1999	01/04/99	GS-1	\$12.10	0
LANE, FRANKA	455702	GS-1	222013-994192	40841	GODDE HILL ROAD	QUARTZ HILL	93536	January, 1999	02/01/99	GS-1	\$12.96	0
LANE, FRANKA	455702	GS-1	222013-994192	40841	GODDE HILL ROAD	QUARTZ HILL	93536	February, 1999	03/03/99	GS-1	\$12.96	0
LANE, FRANKA	455702	GS-1	222013-994192	40841	GODDE HILL ROAD	QUARTZ HILL	93536	March, 1999	04/01/99	GS-1	\$12.53	0
LANE, FRANKA	455702	GS-1	222013-994192	40841	GODDE HILL ROAD	QUARTZ HILL	93536	May, 1999	05/03/99	GS-1	\$13.82	0
LANE, FRANKA	455702	GS-1	222013-994192	40841	GODDE HILL ROAD	QUARTZ HILL	93536	June, 1999	06/02/99	GS-1	\$12.96	0
LANE, FRANKA	455702	GS-1	222013-994192	40841	GODDE HILL ROAD	QUARTZ HILL	93536	July, 1999	07/01/99	GS-1	\$12.53	0
LANE, FRANKA	455702	GS-1	222013-994192	40841	GODDE HILL ROAD	QUARTZ HILL	93536	July, 1999	07/30/99	GS-1	\$12.53	0
LANE, FRANKA	455702	GS-1	222013-994192	40841	GODDE HILL ROAD	QUARTZ HILL	93536	September, 1999	08/31/99	GS-1	\$13.82	0
LANE, FRANKA	455702	GS-1	222013-994192	40841	GODDE HILL ROAD	QUARTZ HILL	93536	October, 1999	09/30/99	GS-1	\$12.96	0
LANE, FRANKA	455702	GS-1	222013-994192	40841	GODDE HILL ROAD	QUARTZ HILL	93536	November, 1999	11/01/99	GS-1	\$13.82	0
LANE, FRANKA	455702	GS-1	222013-994192	40841	GODDE HILL ROAD	QUARTZ HILL	93536	November, 1999	12/01/99	GS-1	\$12.96	0
LANE, FRANKA	455702	GS-1	222013-994192	40841	GODDE HILL ROAD	QUARTZ HILL	93536	January, 2000	01/03/00	GS-1	\$14.26	0
LANE, FRANKA	455702	GS-1	222013-994192	40841	GODDE HILL ROAD	QUARTZ HILL	93536	January, 2000	01/31/00	GS-1	\$12.10	0

Frank Lane
 SCE Past Billing History
 SJA #000-4557-02

LANE, FRANKA	455702	GS-1	222013-994192	40841	GODDE HILL ROAD	QUARTZ HILL	93536	February, 2000	03/01/00	GS-1	\$12.96	0
LANE, FRANKA	455702	GS-1	222013-994192	40841	GODDE HILL ROAD	QUARTZ HILL	93536	March, 2000	03/30/00	GS-1	\$12.53	0
LANE, FRANKA	455702	GS-1	222013-994192	40841	GODDE HILL ROAD	QUARTZ HILL	93536	April, 2000	04/28/00	GS-1	\$12.53	0
LANE, FRANKA	455702	GS-1	222013-994192	40841	GODDE HILL ROAD	QUARTZ HILL	93536	May, 2000	05/30/00	GS-1	\$13.82	0
LANE, FRANKA	455702	GS-1	222013-994192	40841	GODDE HILL ROAD	QUARTZ HILL	93536	July, 2000	06/29/00	GS-1	\$12.96	0
LANE, FRANKA	455702	GS-1	222013-994192	40841	GODDE HILL ROAD	QUARTZ HILL	93536	July, 2000	07/28/00	GS-1	\$12.53	0
LANE, FRANKA	455702	GS-1	222013-994192	40841	GODDE HILL ROAD	QUARTZ HILL	93536	September, 2000	08/29/00	GS-1	\$13.82	0
LANE, FRANKA	455702	GS-1	222013-994192	40841	GODDE HILL ROAD	QUARTZ HILL	93536	October, 2000	09/28/00	GS-1	\$12.96	0
LANE, FRANKA	455702	GS-1	222013-994192	40841	GODDE HILL ROAD	QUARTZ HILL	93536	November, 2000	10/30/00	GS-1	\$13.39	0
LANE, FRANKA	455702	GS-1	222013-994192	40841	GODDE HILL ROAD	QUARTZ HILL	93536	December, 2000	11/30/00	GS-1	\$14.26	0
LANE, FRANKA	455702	GS-1	222013-994192	40841	GODDE HILL ROAD	QUARTZ HILL	93536	January, 2001	01/02/01	GS-1	\$12.10	0
LANE, FRANKA	455702	GS-1	222013-994192	40841	GODDE HILL ROAD	QUARTZ HILL	93536	January, 2001	01/30/01	GS-1	\$13.39	0
LANE, FRANKA	455702	GS-1	222013-994192	40841	GODDE HILL ROAD	QUARTZ HILL	93536	March, 2001	03/02/01	GS-1	\$13.39	0
LANE, FRANKA	455702	GS-1	222013-994192	40841	GODDE HILL ROAD	QUARTZ HILL	93536	March, 2001	03/30/01	GS-1	\$12.10	0
LANE, FRANKA	455702	GS-1	222013-994192	40841	GODDE HILL ROAD	QUARTZ HILL	93536	May, 2001	05/01/01	GS-1	\$13.82	0
LANE, FRANKA	455702	GS-1	222013-994192	40841	GODDE HILL ROAD	QUARTZ HILL	93536	May, 2001	05/30/01	GS-1	\$12.53	0
LANE, FRANKA	455702	GS-1	222013-994192	40841	GODDE HILL ROAD	QUARTZ HILL	93536	June, 2001	06/28/01	GS-1	\$12.53	0
LANE, FRANKA	455702	GS-1	222013-994192	40841	GODDE HILL ROAD	QUARTZ HILL	93536	August, 2001	07/31/01	GS-1	\$14.26	0
LANE, FRANKA	455702	GS-1	222013-994192	40841	GODDE HILL ROAD	QUARTZ HILL	93536	August, 2001	08/28/01	GS-1	\$12.96	0
LANE, FRANKA	455702	GS-1	222013-994192	40841	GODDE HILL ROAD	QUARTZ HILL	93536	September, 2001	09/27/01	GS-1	\$14.26	0
LANE, FRANKA	455702	GS-1	222013-994192	40841	GODDE HILL ROAD	QUARTZ HILL	93536	September, 2001	10/30/01	GS-1	\$13.39	0
LANE, FRANKA	455702	GS-1	222013-994192	40841	GODDE HILL ROAD	QUARTZ HILL	93536	December, 2001	11/30/01	GS-1	\$14.26	0
LANE, FRANKA	455702	GS-1	222013-994192	40841	GODDE HILL ROAD	QUARTZ HILL	93536	January, 2002	01/02/02	GS-1	\$12.10	0
LANE, FRANKA	455702	GS-1	222013-994192	40841	GODDE HILL ROAD	QUARTZ HILL	93536	January, 2002	01/30/02	GS-1	\$12.96	0
LANE, FRANKA	455702	GS-1	222013-994192	40841	GODDE HILL ROAD	QUARTZ HILL	93536	February, 2002	03/01/02	GS-1	\$13.82	0
LANE, FRANKA	455702	GS-1	222013-994192	40841	GODDE HILL ROAD	QUARTZ HILL	93536	April, 2002	04/02/02	GS-1	\$12.53	0
LANE, FRANKA	455702	GS-1	222013-994192	40841	GODDE HILL ROAD	QUARTZ HILL	93536	May, 2002	05/01/02	GS-1	\$12.96	0
LANE, FRANKA	455702	GS-1	222013-994192	40841	GODDE HILL ROAD	QUARTZ HILL	93536	June, 2002	05/31/02	GS-1	\$13.39	0
LANE, FRANKA	455702	GS-1	222013-994192	40841	GODDE HILL ROAD	QUARTZ HILL	93536	July, 2002	07/01/02	GS-1	\$12.96	0
LANE, FRANKA	455702	GS-1	222013-994192	40841	GODDE HILL ROAD	QUARTZ HILL	93536	August, 2002	07/31/02	GS-1	\$12.10	0
LANE, FRANKA	455702	GS-1	222013-994192	40841	GODDE HILL ROAD	QUARTZ HILL	93536	August, 2002	08/28/02	GS-1	\$14.26	0
LANE, FRANKA	455702	GS-1	222013-994192	40841	GODDE HILL ROAD	QUARTZ HILL	93536	October, 2002	09/30/02	GS-1	\$12.96	0
LANE, FRANKA	455702	GS-1	222013-994192	40841	GODDE HILL ROAD	QUARTZ HILL	93536	October, 2002	10/30/02	GS-1	\$14.26	0
LANE, FRANKA	455702	GS-1	222013-994192	40841	GODDE HILL ROAD	QUARTZ HILL	93536	December, 2002	12/02/02	GS-1	\$13.39	0
LANE, FRANKA	455702	GS-1	222013-994192	40841	GODDE HILL ROAD	QUARTZ HILL	93536	December, 2002	01/02/03	GS-1	\$16.85	0
LANE, FRANKA	455702	GS-1	222013-994192	40841	GODDE HILL ROAD	QUARTZ HILL	93536	January, 2003	02/10/03	GS-1	\$9.50	0
LANE, FRANKA	455702	GS-1	222013-994192	40841	GODDE HILL ROAD	QUARTZ HILL	93536	February, 2003	03/04/03	GS-1	\$12.53	0
LANE, FRANKA	455702	GS-1	222013-994192	40841	GODDE HILL ROAD	QUARTZ HILL	93536	April, 2003	04/02/03	GS-1	\$12.53	0
LANE, FRANKA	455702	GS-1	222013-994192	40841	GODDE HILL ROAD	QUARTZ HILL	93536	May, 2003	05/01/03	GS-1	\$12.53	0
LANE, FRANKA	455702	GS-1	222013-994192	40841	GODDE HILL ROAD	QUARTZ HILL	93536	June, 2003	06/02/03	GS-1	\$13.82	0
LANE, FRANKA	455702	GS-1	222013-994192	40841	GODDE HILL ROAD	QUARTZ HILL	93536	July, 2003	07/01/03	GS-1	\$12.53	0
LANE, FRANKA	455702	GS-1	222013-994192	40841	GODDE HILL ROAD	QUARTZ HILL	93536	July, 2003	07/30/03	GS-1	\$12.53	0
LANE, FRANKA	455702	GS-1	222013-994192	40841	GODDE HILL ROAD	QUARTZ HILL	93536	August, 2003	08/28/03	GS-1	\$12.47	0
LANE, FRANKA	455702	GS-1	222013-994192	40841	GODDE HILL ROAD	QUARTZ HILL	93536	August, 2003	09/30/03	GS-1	\$14.19	0
LANE, FRANKA	455702	GS-1	222013-994192	40841	GODDE HILL ROAD	QUARTZ HILL	93536	November, 2003	10/30/03	GS-1	\$12.90	0

Frank Lane
 SCE Past Billing History
 S/A #000-4557-02

LANE, FRANKA	455702	GS-1	222013-994192	40841	GODDE HILL ROAD	QUARTZ HILL	93536	December, 2003	12/02/03	GS-1	\$14.19	0
LANE, FRANKA	455702	GS-1	222013-994192	40841	GODDE HILL ROAD	QUARTZ HILL	93536	January, 2004	01/02/04	GS-1	\$13.33	0
LANE, FRANKA	455702	GS-1	222013-994192	40841	GODDE HILL ROAD	QUARTZ HILL	93536	January, 2004	01/30/04	GS-1	\$12.04	0
LANE, FRANKA	455702	GS-1	222013-994192	40841	GODDE HILL ROAD	QUARTZ HILL	93536	March, 2004	03/03/04	GS-1	\$14.19	0
LANE, FRANKA	455702	GS-1	222013-994192	40841	GODDE HILL ROAD	QUARTZ HILL	93536	March, 2004	03/10/04	GS-1	\$12.04	0
LANE, FRANKA	455702	GS-1	222013-994192	40841	GODDE HILL ROAD	QUARTZ HILL	93536	May, 2004	04/30/04	GS-1	\$12.90	0
LANE, FRANKA	455702	GS-1	222013-994192	40841	GODDE HILL ROAD	QUARTZ HILL	93536	June, 2004	06/01/04	GS-1	\$13.76	0
LANE, FRANKA	455702	GS-1	222013-994192	40841	GODDE HILL ROAD	QUARTZ HILL	93536	July, 2004	06/30/04	GS-1	\$12.47	0
LANE, FRANKA	455702	GS-1	222013-994192	40841	GODDE HILL ROAD	QUARTZ HILL	93536	August, 2004	07/30/04	GS-1	\$12.90	0
LANE, FRANKA	455702	GS-1	222013-994192	40841	GODDE HILL ROAD	QUARTZ HILL	93536	September, 2004	08/30/04	GS-1	\$15.08	0
LANE, FRANKA	455702	GS-1	222013-994192	40841	GODDE HILL ROAD	QUARTZ HILL	93536	October, 2004	09/29/04	GS-1	\$15.00	0
LANE, FRANKA	455702	GS-1	222013-994192	40841	GODDE HILL ROAD	QUARTZ HILL	93536	November, 2004	11/01/04	GS-1	\$16.50	0
LANE, FRANKA	455702	GS-1	222013-994192	40841	GODDE HILL ROAD	QUARTZ HILL	93536	December, 2004	12/02/04	GS-1	\$15.50	0
LANE, FRANKA	455702	GS-1	222013-994192	40841	GODDE HILL ROAD	QUARTZ HILL	93536	January, 2005	01/03/05	GS-1	\$16.00	0
LANE, FRANKA	455702	GS-1	222013-994192	40841	GODDE HILL ROAD	QUARTZ HILL	93536	February, 2005	02/01/05	GS-1	\$14.50	0
LANE, FRANKA	455702	GS-1	222013-994192	40841	GODDE HILL ROAD	QUARTZ HILL	93536	February, 2005	03/02/05	GS-1	\$14.50	0
LANE, FRANKA	455702	GS-1	222013-994192	40841	GODDE HILL ROAD	QUARTZ HILL	93536	April, 2005	04/01/05	GS-1	\$15.00	0
LANE, FRANKA	455702	GS-1	222013-994192	40841	GODDE HILL ROAD	QUARTZ HILL	93536	May, 2005	05/02/05	GS-1	\$14.96	0
LANE, FRANKA	455702	GS-1	222013-994192	40841	GODDE HILL ROAD	QUARTZ HILL	93536	June, 2005	06/01/05	GS-1	\$14.10	0
LANE, FRANKA	455702	GS-1	222013-994192	40841	GODDE HILL ROAD	QUARTZ HILL	93536	July, 2005	06/30/05	GS-1	\$13.63	0
LANE, FRANKA	455702	GS-1	222013-994192	40841	GODDE HILL ROAD	QUARTZ HILL	93536	August, 2005	08/01/05	GS-1	\$15.04	0
LANE, FRANKA	455702	GS-1	222013-994192	40841	GODDE HILL ROAD	QUARTZ HILL	93536	September, 2005	08/30/05	GS-1	\$13.63	0
LANE, FRANKA	455702	GS-1	222013-994192	40841	GODDE HILL ROAD	QUARTZ HILL	93536	October, 2005	09/29/05	GS-1	\$14.10	0
LANE, FRANKA	455702	GS-1	222013-994192	40841	GODDE HILL ROAD	QUARTZ HILL	93536	November, 2005	11/01/05	GS-1	\$15.51	0
LANE, FRANKA	455702	GS-1	222013-994192	40841	GODDE HILL ROAD	QUARTZ HILL	93536	November, 2005	12/01/05	GS-1	\$14.10	0
LANE, FRANKA	455702	GS-1	222013-994192	40841	GODDE HILL ROAD	QUARTZ HILL	93536	January, 2006	01/03/06	GS-1	\$15.51	0
LANE, FRANKA	455702	GS-1	222013-994192	40841	GODDE HILL ROAD	QUARTZ HILL	93536	February, 2006	02/01/06	GS-1	\$13.63	0
LANE, FRANKA	455702	GS-1	222013-994192	40841	GODDE HILL ROAD	QUARTZ HILL	93536	March, 2006	03/03/06	GS-1	\$13.02	0
LANE, FRANKA	455702	GS-1	222013-994192	40841	GODDE HILL ROAD	QUARTZ HILL	93536	April, 2006	04/03/06	GS-1	\$13.33	0
LANE, FRANKA	455702	GS-1	222013-994192	40841	GODDE HILL ROAD	QUARTZ HILL	93536	May, 2006	05/02/06	GS-1	\$12.47	0
LANE, FRANKA	455702	GS-1	222013-994192	40841	GODDE HILL ROAD	QUARTZ HILL	93536	June, 2006	06/01/06	GS-1	\$12.90	0
LANE, FRANKA	455702	GS-1	222013-994192	40841	GODDE HILL ROAD	QUARTZ HILL	93536	July, 2006	06/30/06	GS-1	\$12.47	0
LANE, FRANKA	455702	GS-1	222013-994192	40841	GODDE HILL ROAD	QUARTZ HILL	93536	July, 2006	07/31/06	GS-1	\$13.33	0
LANE, FRANKA	455702	GS-1	222013-994192	40841	GODDE HILL ROAD	QUARTZ HILL	93536	September, 2006	08/30/06	GS-1	\$12.81	0
LANE, FRANKA	455702	GS-1	222013-994192	40841	GODDE HILL ROAD	QUARTZ HILL	93536	October, 2006	09/29/06	GS-1	\$12.81	0
LANE, FRANKA	455702	GS-1	222013-994192	40841	GODDE HILL ROAD	QUARTZ HILL	93536	November, 2006	10/31/06	GS-1	\$13.66	0
LANE, FRANKA	455702	GS-1	222013-994192	40841	GODDE HILL ROAD	QUARTZ HILL	93536	December, 2006	12/01/06	GS-1	\$13.24	0
LANE, FRANKA	455702	GS-1	222013-994192	40841	GODDE HILL ROAD	QUARTZ HILL	93536	January, 2007	01/02/07	GS-1	\$13.66	0
LANE, FRANKA	455702	GS-1	222013-994192	40841	GODDE HILL ROAD	QUARTZ HILL	93536	January, 2007	01/30/07	GS-1	\$11.96	0
LANE, FRANKA	455702	GS-1	222013-994192	40841	GODDE HILL ROAD	QUARTZ HILL	93536	February, 2007	03/01/07	GS-1	\$14.09	0
LANE, FRANKA	455702	GS-1	222013-994192	40841	GODDE HILL ROAD	QUARTZ HILL	93536	April, 2007	04/02/07	GS-1	\$16.36	0
LANE, FRANKA	455702	GS-1	222013-994192	40841	GODDE HILL ROAD	QUARTZ HILL	93536	May, 2007	05/01/07	GS-1	\$14.85	0
LANE, FRANKA	455702	GS-1	222013-994192	40841	GODDE HILL ROAD	QUARTZ HILL	93536	May, 2007	05/30/07	GS-1	\$14.85	0
LANE, FRANKA	455702	GS-1	222013-994192	40841	GODDE HILL ROAD	QUARTZ HILL	93536	June, 2007	06/28/07	GS-1	\$14.85	0
LANE, FRANKA	455702	GS-1	222013-994192	40841	GODDE HILL ROAD	QUARTZ HILL	93536	August, 2007	07/31/07	GS-1	\$16.90	0

Frank Lane
 SCE Past Billing History
 S/A #000-4557-02

LANE, FRANKA	455702	GS-1	222013-994192	40841	GODDE HILL ROAD	QUARTZ HILL	93536	September, 2007	08/29/07	GS-1	\$14.85	0
LANE, FRANKA	455702	GS-1	222013-994192	40841	GODDE HILL ROAD	QUARTZ HILL	93536	September, 2007	09/27/07	GS-1	\$14.85	0
LANE, FRANKA	455702	GS-1	222013-994192	40841	GODDE HILL ROAD	QUARTZ HILL	93536	November, 2007	11/30/07	GS-1	\$16.90	0
LANE, FRANKA	455702	GS-1	222013-994192	40841	GODDE HILL ROAD	QUARTZ HILL	93536	January, 2008	01/02/08	GS-1	\$15.87	0
LANE, FRANKA	455702	GS-1	222013-994192	40841	GODDE HILL ROAD	QUARTZ HILL	93536	February, 2008	01/13/08	GS-1	\$16.90	0
LANE, FRANKA	455702	GS-1	222013-994192	40841	GODDE HILL ROAD	QUARTZ HILL	93536	March, 2008	02/29/08	GS-1	\$14.85	0
LANE, FRANKA	455702	GS-1	222013-994192	40841	GODDE HILL ROAD	QUARTZ HILL	93536	May, 2008	04/01/08	GS-1	\$14.85	0
LANE, FRANKA	455702	GS-1	222013-994192	40841	GODDE HILL ROAD	QUARTZ HILL	93536	July, 2008	05/30/08	GS-1	\$16.38	0
LANE, FRANKA	455702	GS-1	222013-994192	40841	GODDE HILL ROAD	QUARTZ HILL	93536	August, 2008	07/01/08	GS-1	\$16.63	0
LANE, FRANKA	455702	GS-1	222013-994192	40841	GODDE HILL ROAD	QUARTZ HILL	93536	September, 2008	07/30/08	GS-1	\$16.39	0
LANE, FRANKA	455702	GS-1	222013-994192	40841	GODDE HILL ROAD	QUARTZ HILL	93536	October, 2008	08/29/08	GS-1	\$18.08	0
LANE, FRANKA	455702	GS-1	222013-994192	40841	GODDE HILL ROAD	QUARTZ HILL	93536	November, 2008	09/30/08	GS-1	\$16.95	0
LANE, FRANKA	455702	GS-1	222013-994192	40841	GODDE HILL ROAD	QUARTZ HILL	93536	December, 2008	10/31/08	GS-1	\$17.52	0
LANE, FRANKA	455702	GS-1	222013-994192	40841	GODDE HILL ROAD	QUARTZ HILL	93536	January, 2009	12/03/08	GS-1	\$18.65	0
LANE, FRANKA	455702	GS-1	222013-994192	40841	GODDE HILL ROAD	QUARTZ HILL	93536	February, 2009	01/02/09	GS-1	\$16.95	0
LANE, FRANKA	455702	GS-1	222013-994192	40841	GODDE HILL ROAD	QUARTZ HILL	93536	March, 2009	02/02/09	GS-1	\$17.52	0
LANE, FRANKA	455702	GS-1	222013-994192	40841	GODDE HILL ROAD	QUARTZ HILL	93536	April, 2009	03/03/09	GS-1	\$16.38	0
LANE, FRANKA	455702	GS-1	222013-994192	40841	GODDE HILL ROAD	QUARTZ HILL	93536	May, 2009	04/01/09	GS-1	\$15.98	0
LANE, FRANKA	455702	GS-1	222013-994192	40841	GODDE HILL ROAD	QUARTZ HILL	93536	June, 2009	05/04/09	GS-1	\$20.85	0
LANE, FRANKA	455702	GS-1	222013-994192	40841	GODDE HILL ROAD	QUARTZ HILL	93536	July, 2009	06/03/09	GS-1	\$19.20	0
LANE, FRANKA	455702	GS-1	222013-994192	40841	GODDE HILL ROAD	QUARTZ HILL	93536	August, 2009	07/02/09	GS-1	\$18.56	0
LANE, FRANKA	455702	GS-1	222013-994192	40841	GODDE HILL ROAD	QUARTZ HILL	93536	September, 2009	08/03/09	GS-1	\$20.48	0
LANE, FRANKA	455702	GS-1	222013-994192	40841	GODDE HILL ROAD	QUARTZ HILL	93536	October, 2009	08/31/09	GS-1	\$17.92	0
LANE, FRANKA	455702	GS-1	222013-994192	40841	GODDE HILL ROAD	QUARTZ HILL	93536	November, 2009	10/01/09	GS-1	\$19.84	0
LANE, FRANKA	455702	GS-1	222013-994192	40841	GODDE HILL ROAD	QUARTZ HILL	93536	December, 2009	11/02/09	GS-1	\$21.57	0
LANE, FRANKA	455702	GS-1	222013-994192	40841	GODDE HILL ROAD	QUARTZ HILL	93536	January, 2010	12/03/09	GS-1	\$20.89	0
LANE, FRANKA	455702	GS-1	222013-994192	40841	GODDE HILL ROAD	QUARTZ HILL	93536	February, 2010	12/31/09	GS-1	\$18.87	0
LANE, FRANKA	455702	GS-1	222013-994192	40841	GODDE HILL ROAD	QUARTZ HILL	93536	March, 2010	02/02/10	GS-1	\$22.24	0
LANE, FRANKA	455702	GS-1	222013-994192	40841	GODDE HILL ROAD	QUARTZ HILL	93536	April, 2010	03/03/10	GS-1	\$19.66	0
LANE, FRANKA	455702	GS-1	222013-994192	40841	GODDE HILL ROAD	QUARTZ HILL	93536	May, 2010	04/02/10	GS-1	\$21.84	0
LANE, FRANKA	455702	GS-1	222013-994192	40841	GODDE HILL ROAD	QUARTZ HILL	93536	June, 2010	04/30/10	GS-1	\$20.38	0
LANE, FRANKA	455702	GS-1	222013-994192	40841	GODDE HILL ROAD	QUARTZ HILL	93536	July, 2010	06/02/10	GS-1	\$24.02	0
LANE, FRANKA	455702	GS-1	222013-994192	40841	GODDE HILL ROAD	QUARTZ HILL	93536	August, 2010	07/01/10	GS-1	\$21.11	0
LANE, FRANKA	455702	GS-1	222013-994192	40841	GODDE HILL ROAD	QUARTZ HILL	93536	September, 2010	07/31/10	GS-1	\$21.84	0
LANE, FRANKA	455702	GS-1	222013-994192	40841	GODDE HILL ROAD	QUARTZ HILL	93536	October, 2010	08/31/10	GS-1	\$22.57	0
LANE, FRANKA	455702	GS-1	222013-994192	40841	GODDE HILL ROAD	QUARTZ HILL	93536	November, 2010	09/29/10	GS-1	\$21.11	0
LANE, FRANKA	455702	GS-1	222013-994192	40841	GODDE HILL ROAD	QUARTZ HILL	93536	December, 2010	11/01/10	GS-1	\$24.02	0
LANE, FRANKA	455702	GS-1	222013-994192	40841	GODDE HILL ROAD	QUARTZ HILL	93536	January, 2011	12/01/10	GS-1	\$21.84	0
LANE, FRANKA	455702	GS-1	222013-994192	40841	GODDE HILL ROAD	QUARTZ HILL	93536	February, 2011	12/30/10	GS-1	\$21.11	0
LANE, FRANKA	455702	GS-1	222013-994192	40841	GODDE HILL ROAD	QUARTZ HILL	93536	March, 2011	02/01/11	GS-1	\$24.02	0
LANE, FRANKA	455702	GS-1	222013-994192	40841	GODDE HILL ROAD	QUARTZ HILL	93536	April, 2011	03/02/11	GS-1	\$21.11	0
LANE, FRANKA	455702	GS-1	222013-994192	40841	GODDE HILL ROAD	QUARTZ HILL	93536	May, 2011	03/31/11	GS-1	\$21.11	0
LANE, FRANKA	455702	GS-1	222013-994192	40841	GODDE HILL ROAD	QUARTZ HILL	93536	June, 2011	04/30/11	GS-1	\$21.84	0

Frank Lane
 SCE Past Billing History
 S/A #000-4557-02

LANE, FRANK A	455702	GS-1	222013-994192	40841	GODDE HILL ROAD	QUARTZ HILL	93536	May, 2011	05/31/11	GS-1	\$22.57	0
LANE, FRANK A	455702	GS-1	222013-994192	40841	GODDE HILL ROAD	QUARTZ HILL	93536	July, 2011	06/30/11	GS-1	\$21.99	0
LANE, FRANK A	455702	GS-1	222013-994192	40841	GODDE HILL ROAD	QUARTZ HILL	93536	August, 2011	08/01/11	GS-1	\$23.46	0
LANE, FRANK A	455702	GS-1	222013-994192	40841	GODDE HILL ROAD	QUARTZ HILL	93536	September, 2011	08/30/11	GS-1	\$21.26	0
LANE, FRANK A	455702	GS-1	222013-994192	40841	GODDE HILL ROAD	QUARTZ HILL	93536	October, 2011	09/29/11	GS-1	\$21.99	0
LANE, FRANK A	455702	GS-1	222013-994192	40841	GODDE HILL ROAD	QUARTZ HILL	93536	November, 2011	11/01/11	GS-1	\$24.19	0
LANE, FRANK A	455702	GS-1	222013-994192	40841	GODDE HILL ROAD	QUARTZ HILL	93536	December, 2011	12/02/11	GS-1	\$22.72	0
LANE, FRANK A	455702	GS-1	222013-994192	40841	GODDE HILL ROAD	QUARTZ HILL	93536	February, 2012	12/30/11	GS-1	\$20.52	0
LANE, FRANK A	455702	GS-1	222013-994192	40841	GODDE HILL ROAD	QUARTZ HILL	93536	March, 2012	02/01/12	GS-1	\$24.19	0
LANE, FRANK A	455702	GS-1	222013-994192	40841	GODDE HILL ROAD	QUARTZ HILL	93536	March, 2012	03/02/12	GS-1	\$21.99	0
LANE, FRANK A	455702	GS-1	222013-994192	40841	GODDE HILL ROAD	QUARTZ HILL	93536	April, 2012	03/30/12	GS-1	\$20.52	0
LANE, FRANK A	455702	GS-1	222013-994192	40841	GODDE HILL ROAD	QUARTZ HILL	93536	June, 2012	04/30/12	GS-1	\$22.72	0
LANE, FRANK A	455702	GS-1	222013-994192	40841	GODDE HILL ROAD	QUARTZ HILL	93536	June, 2012	05/31/12	GS-1	\$22.72	0
LANE, FRANK A	455702	GS-1	222013-994192	40841	GODDE HILL ROAD	QUARTZ HILL	93536	August, 2012	06/28/12	GS-1	\$20.52	0
LANE, FRANK A	455702	GS-1	222013-994192	40841	GODDE HILL ROAD	QUARTZ HILL	93536	August, 2012	07/31/12	GS-1	\$24.19	0

Frank Lane
SCE Past Billing History
S/A #000-4557-02

Maximum KW	Billing Days
0.0	161
0.0	53
0.0	8
0.0	30
0.0	28
0.0	33
0.0	30
0.0	28
0.0	33
0.0	28
0.0	29
0.0	33
0.0	32
0.0	31
0.0	30
0.0	28
0.0	29
0.0	32
0.0	30
0.0	30
0.0	29
0.0	33
0.0	30
0.0	33
0.0	29
0.0	29
0.0	29
0.0	33
0.0	28
0.0	31
0.0	28
0.0	32
0.0	30
0.0	34
0.0	21
0.0	34
0.0	28
0.0	30
0.0	29
0.0	28
0.0	33

Frank Lane
SCE Past Billing History
S/A #000-4557-02

0.0	29
0.0	33
0.0	32
0.0	32
0.0	33
0.0	29
0.0	29
0.0	27
0.0	30
0.0	33
0.0	29
0.0	34
0.0	29
0.0	28
0.0	28
0.0	33
0.0	35
0.0	28
0.0	28
0.0	29
0.0	30
0.0	34
0.0	25
0.0	33
0.0	29
0.0	29
0.0	33
0.0	29
0.0	35
0.0	28
0.0	29
0.0	30
0.0	28
0.0	32
0.0	30
0.0	32
0.0	29
0.0	29
0.0	30
0.0	33
0.0	35
0.0	28
0.0	30
0.0	31
0.0	29

Frank Lane
SCE Past Billing History
S/A #000-4567-02

0.0	31
0.0	32
0.0	31
0.0	32
0.0	29
0.0	30
0.0	33
0.0	30
0.0	28
0.0	31
0.0	29
0.0	29
0.0	30
0.0	31
0.0	30
0.0	28
0.0	33
0.0	31
0.0	33
0.0	31
0.0	31
0.0	36
0.0	22
0.0	29
0.0	29
0.0	32
0.0	31
0.0	29
0.0	31
0.0	30
0.0	30
0.0	33
0.0	33
0.0	28
0.0	30
0.0	29
0.0	29
0.0	32
0.0	30
0.0	29
0.0	29
0.0	28
0.0	32
0.0	30
0.0	30
0.0	32
0.0	30
0.0	32
0.0	30
0.0	33
0.0	33
0.0	28

Frank Lane
SCE Past Billing History
S/A #000-4557-02

0.0	30
0.0	29
0.0	29
0.0	32
0.0	30
0.0	29
0.0	32
0.0	30
0.0	32
0.0	31
0.0	33
0.0	28
0.0	31
0.0	28
0.0	32
0.0	29
0.0	29
0.0	33
0.0	28
0.0	30
0.0	33
0.0	31
0.0	33
0.0	28
0.0	30
0.0	32
0.0	29
0.0	30
0.0	31
0.0	30
0.0	28
0.0	33
0.0	30
0.0	33
0.0	31
0.0	39
0.0	22
0.0	29
0.0	29
0.0	32
0.0	29
0.0	29
0.0	29
0.0	33
0.0	30

Frank Lane
SCE Past Billing History
S/A #000-4557-02

0.0	33
0.0	31
0.0	28
0.0	33
0.0	28
0.0	30
0.0	32
0.0	29
0.0	30
0.0	31
0.0	30
0.0	33
0.0	31
0.0	32
0.0	29
0.0	29
0.0	30
0.0	31
0.0	30
0.0	29
0.0	30
0.0	33
0.0	30
0.0	33
0.0	29
0.0	30
0.0	31
0.0	29
0.0	30
0.0	29
0.0	31
0.0	30
0.0	32
0.0	31
0.0	32
0.0	28
0.0	30
0.0	32
0.0	29
0.0	29
0.0	29
0.0	33

Frank Lane
SOE Past Billing History
S/A #000-4557-02

0.0	29
0.0	29
0.0	33
0.0	31
0.0	33
0.0	29
0.0	29
0.0	32
0.0	30
0.0	29
0.0	32
0.0	29
0.0	30
0.0	32
0.0	31
0.0	33
0.0	30
0.0	31
0.0	29
0.0	29
0.0	33
0.0	30
0.0	29
0.0	32
0.0	28
0.0	31
0.0	32
0.0	31
0.0	28
0.0	33
0.0	29
0.0	30
0.0	28
0.0	33
0.0	29
0.0	30
0.0	31
0.0	29
0.0	33
0.0	30
0.0	29
0.0	33
0.0	29
0.0	29
0.0	30

Frank Lane
SCE Past Billing History
S/A #000-4557-02

0.0	31
0.0	30
0.0	32
0.0	29
0.0	30
0.0	33
0.0	31
0.0	28
0.0	33
0.0	30
0.0	28
0.0	31
0.0	31
0.0	28
0.0	33

JOB RECORD

TEST PUMP
INSTALLED 8-21-06
by P.K.

Job Name George Lane

Location 85th W + K-8

Pump Make goulds No. GT 155

I. D. Well 8" S.W.L. _____ Total Depth _____

Pump Setting 504' + 6' at Pump Column Lgth 21' T&S Lgth _____

Column Data: Material Galv. Size 3" Thds/in _____ Butt or Taper

Tubing Date: Material Q Size Q Thds/in Q Left or Right

Shaft Data: Material Q Size Q Thds/in Q Left or Right

Size Bowls 6" Stages 11 Stgs Suction 3" Disc. 3"

Motor H.P. 25 Make Franklin RPM 3450 Frame 460V Type 3 Ph

Misc. NB VALVES Airline at 504' from top of casing

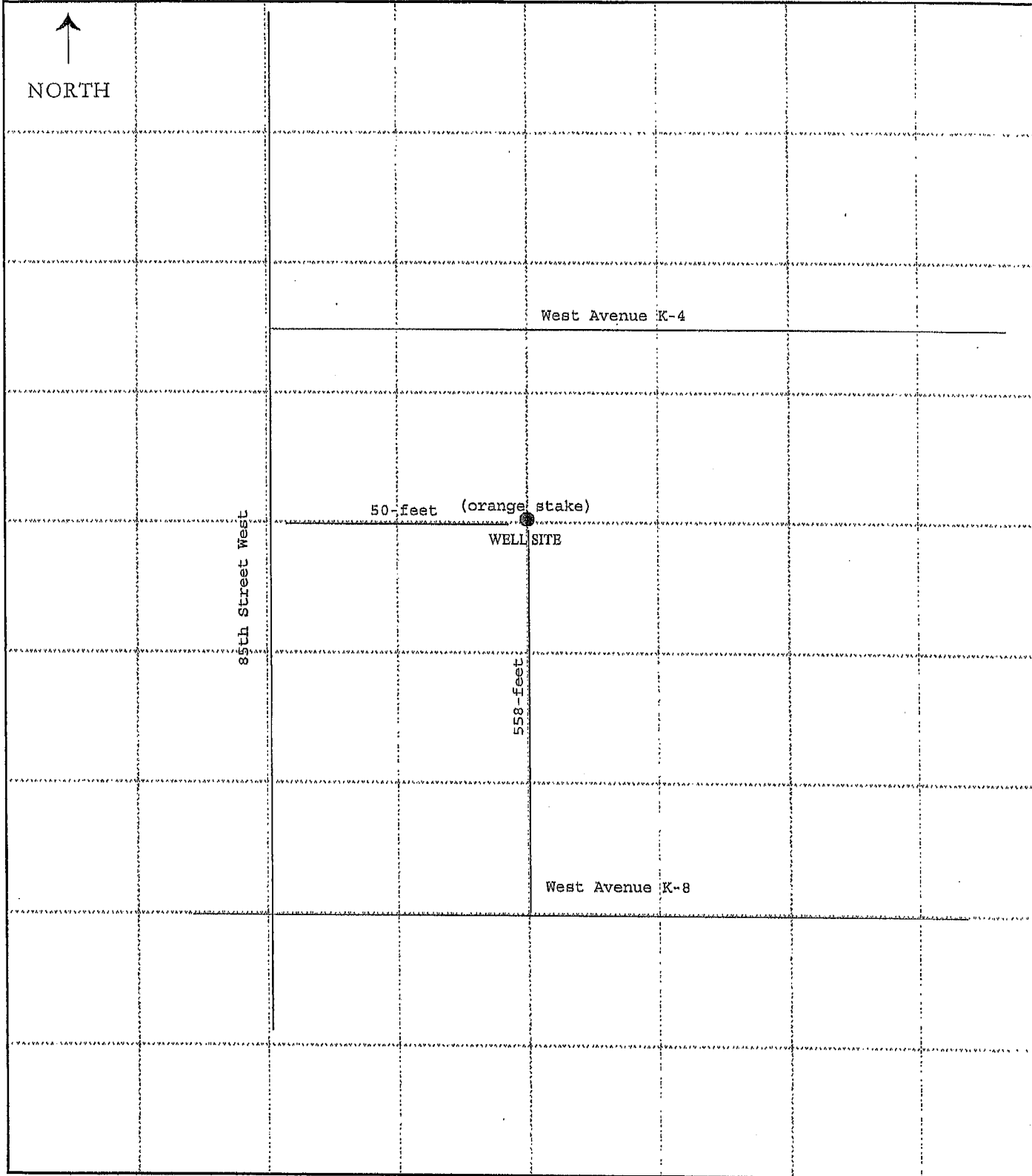
Extension, Future, Col. _____ Tube _____ Shaft _____

Additional Information

LIST BY JOB NAME: #691112

WELL CONSTRUCTION LOCATION DETAILS

SITE ADDRESS or APN West 85th Street & Avenue K-8, Lancaster, CA 93536 91350		CITY	ZIP CODE
Township 7N	Range 13W	Section 29	Map Book Page/ Grid 3248-024-008
WELL LOCATION	Provide a scaled drawing (1" = 50') indicating property lines, sewers, private sewage disposal systems within 200 feet of the well site along with labels and dimensions. Attach all documents that confirm that the well is located the required distance from the septic systems.		



WELL PERMIT APPLICATION - PRODUCTION WELLS
 WATER & SEWAGE / MOUNTAIN & RURAL PROGRAMS - ENVIRONMENTAL HEALTH DIVISION
 5050 COMMERCE DRIVE, BALDWIN PARK, CA 91706 (626) 490-5380 FAX (626) 813-3016

DATE: August 7, 2006

<input checked="" type="checkbox"/> NEW WELL CONSTRUCTION	<input checked="" type="checkbox"/> PRIVATE DOMESTIC	<input type="checkbox"/> PUBLIC DOMESTIC
<input checked="" type="checkbox"/> RECONSTRUCTION OR RENOVATION	<input type="checkbox"/> IRRIGATION	<input type="checkbox"/> Small System
<input type="checkbox"/> DECOMMISSIONING	<input type="checkbox"/> INDUSTRIAL	<input type="checkbox"/> Large System
<input type="checkbox"/> OTHER:	<input type="checkbox"/> GRAVEL PACK	<input type="checkbox"/> Other :

WELL LOCATION	SITE ADDRESS West 85th Street & Avenue K-8, Lancaster, CA 93536		CITY Lancaster, CA		ZIP CODE
	Township 7N	Range 13W	Section 29	Map Book Page/ Grid 3248-024-008	
	GPS LOCATION : (To be completed after the final seal)				

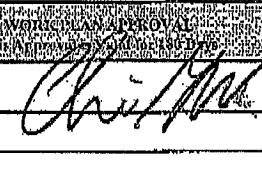
WELL CHARACTERISTICS	Type and Size of Production Casing	
	Sanitary / Annular Sealing Material	
	Depth of Sanitary / Annular Seal	
	Conductor Casing Seal	

OWNER INFORMATION	Company	
	Contact Person	
	Address	
	City, State Zip	
Telephone		

IF WELL AND GEOLOGIC CONDITIONS ENCOUNTERED IN THE FIELD ARE FOUND TO DIFFER FROM THE SCOPE OF WORK PRESENTED TO THIS OFFICE, WORK PLAN MODIFICATIONS MAY BE REQUIRED

OWNER INFORMATION	Well Owner	George Lane
	Address	44909 N. 10th Street West
	City / Zip Code	Lancaster, CA 93534
	Telephone	661-942-0435
	Well Driller	ROTTMAN DRILLING CO.
	Address	46471 N. Division Street
	City / Zip Code	Lancaster, CA 93535
	C-67 License No.	316599
Telephone	661-942-6125 / 661-248-1510 (Fax)	

DISPOSITION OF PERMIT (Department Use Only)
 THIS PERMIT IS CONSIDERED COMPLETE WHEN THE WORK PLAN IS APPROVED, A FINAL INSPECTION CONDUCTED BY THIS DEPARTMENT, AND THE RECEIPT OF A WELL COMPLETION LOG. NO WELL CONSTRUCTION OR RECOMMISSIONING CAN BE INITIATED WITHOUT THE WORK PLAN APPROVAL FROM THIS DEPARTMENT.

WORK PLAN APPROVAL	
Date 8/9/06	REHS 
Conditions	

WELL DECOMMISSIONING	Well Depth	
	<input type="checkbox"/> log / records	
	Method of Well Assessment	
	Depth and Number of Perforations	
	Type of Perforator	
	Size of Perforations	
Type and Amount of Sealant		
Method of Upper Seal Pressure Application		

Date	REHS
Conditions	

THE PLACEMENT OF THE ANNULAR SEAL MUST BE WITNESSED BY THIS DEPARTMENT. CONTACT THIS OFFICE AND ARRANGE FOR AN APPOINTMENT.


ANNULAR SEALING / FINAL DECOMMISSIONING SEAL APPLIED

Date	REHS
Conditions	

THE COMPLETED WELL MUST BE PROPERLY DISINFECTED AND MEET BACTERIOLOGICAL STANDARDS PRIOR TO USE

WATER QUALITY	
The water from the well must meet bacteriological standards prior to domestic use	
Date	REHS

I hereby agree to comply in every respect with all the regulations of the County Environmental Health Division and with all ordinances and laws of the County of Los Angeles and the State of California pertaining to well construction, reconstruction and decommissioning. Upon completion of the well and within thirty days thereafter, I will furnish the Environmental Health office with a completion log of the well giving date drilled, depth of the well, perforations in the casing, and any other data deemed necessary by County Environmental Health Division.


 Applicant's Signature
 Applicant Name (PRINT) **Matthew W. Rottman - Treasurer**
 Telephone: **661-942-6125**