

1 ;Michael Duane Davis, SBN 093678  
2 Marlene L. Allen-Hammarlund, SBN 126418  
3 Derek R. Hoffman, SBN 285784  
4 **GRESHAM SAVAGE NOLAN & TILDEN,**  
5 **A Professional Corporation**  
6 3750 University Avenue, Suite 250  
7 Riverside, CA 92501-3335  
8 Telephone: (951) 684-2171  
9 Facsimile: (951) 684-2150

10 Attorneys for Cross-Defendant/Cross-Complainant,  
11 ANTELOPE VALLEY UNITED MUTUAL GROUP; and  
12 Cross-Defendants, ADAMS BENNETT INVESTMENTS,  
13 LLC; MIRACLE IMPROVEMENT CORPORATION dba  
14 GOLDEN SANDS MOBILE HOME PARK, aka  
15 GOLDEN SANDS TRAILER PARK, named as ROE  
16 1121; ST. ANDREW'S ABBEY, INC., named as ROE  
17 623; SERVICE ROCK PRODUCTS, L.P.; and SHEEP  
18 CREEK WATER COMPANY, INC.

11 **SUPERIOR COURT OF THE STATE OF CALIFORNIA**  
12 **IN AND FOR THE COUNTY OF LOS ANGELES**

13 Coordination Proceeding  
14 Special Title (Rule 1550(b))

) Judicial Council Coordination  
) Proceeding No. 4408

15 **ANTELOPE VALLEY GROUNDWATER**  
16 **CASES**

) Santa Clara Case No. 1-05-CV-049053  
) Assigned to the Honorable Jack Komar  
) Department 17C

17 Including Consolidated Actions:

18 **Los Angeles County Waterworks District**  
19 **No. 40 v. Diamond Farming Co.**  
20 Superior Court of California, County of Los  
21 Angeles, Case No. BC 325 201

) **CROSS-DEFENDANT/CROSS-**  
) **COMPLAINANT, ANTELOPE VALLEY**  
) **UNITED MUTUAL GROUP,**  
) **SPECIFICALLY BAXTER MUTUAL**  
) **WATER COMPANY'S, FIRST**  
) **SUPPLEMENTAL RESPONSE TO**  
) **DECEMBER 12, 2012 DISCOVERY**  
) **ORDER FOR PHASE 4 TRIAL**

22 **Los Angeles County Waterworks District**  
23 **No. 40 v. Diamond Farming Co.**  
24 Superior Court of California, County of Kern,  
25 Case No. S-1500-CV-254-348

26 **Wm. Bolthouse Farms, Inc. v. City of**  
27 **Lancaster**  
28 **Diamond Farming Co. v. City of Lancaster**  
29 **Diamond Farming Co. v. Palmdale Water**  
30 **Dist.**

) For Court's Use Only:  
) Santa Clara County  
) Case No. 1-05-CV-049053  
) (For E-Posting/E-Service Purposes Only)

31 Superior Court of California, County of  
32 Riverside, consolidated actions, Case Nos. RIC  
33 353 840, RIC 344 436, RIC 344 668

34 AND RELATED ACTIONS.

1 **TO ALL PARTIES AND TO THEIR ATTORNEYS OF RECORD:**

2 Cross-Defendant / Cross-Complainant, **ANTELOPE VALLEY UNITED MUTUAL**  
3 **GROUP** [comprised of Antelope Park Mutual Water Co., Aqua-J Mutual Water Co., Averydale  
4 Mutual Water Co., Baxter Mutual Water Co., Bleich Flat Mutual Water Co., Colorado Mutual  
5 Water Co., Eldorado Mutual Water Co., Evergreen Mutual Water Co., Land Projects Mutual  
6 Water Co., Landale Mutual Water Co., Shadow Acres Mutual Water Co., Sundale Mutual Water  
7 Co., Sunnyside Farms Mutual Water Co., Tierra Bonita Mutual Water Co., Westside Park  
8 Mutual Water Co., and White Fence Farms Mutual Water Co., Inc.], by and through their  
9 attorneys of record, Gresham Savage Nolan & Tilden, PC, by Michael Duane Davis, Marlene L.  
10 Allen-Hammarlund and Derek R. Hoffman, submit the following supplemental information and  
11 materials for **BAXTER MUTUAL WATER COMPANY**, under penalty of perjury, in response  
12 to the December 12, 2012 Discovery Order for Phase 4 Trial (the "*Discovery Order*"), issued by  
13 the Honorable Jack Komar, Trial Judge.

14 Cross-Defendant / Cross-Complainant, **ANTELOPE VALLEY UNITED MUTUAL**  
15 **GROUP**, and specifically **BAXTER MUTUAL WATER COMPANY**, made a good faith  
16 effort to fully and accurately respond to the categories of information required by the *Discovery*  
17 *Order* in the Discovery Responses that it filed on December 21, 2012. However, due to the  
18 shortness of time between the issuance of the order and the degree of detail required by the  
19 *Discovery Order*, Cross-Defendant / Cross-Complainant, **ANTELOPE VALLEY UNITED**  
20 **MUTUAL GROUP** hereby supplements its responses for **BAXTER MUTUAL WATER**  
21 **COMPANY** to include information and documents responsive to the *Discovery Order* which  
22 were obtained after the December 21, 2012 deadline, and reserves the right to further supplement  
23 its responses pursuant to the *Code of Civil Procedure* and this Court's December 12, 2012 *Case*  
24 *Management Order for Phase Four Trial* and this Court's January 17<sup>th</sup> *First Amendment to Case*  
25 *Management Order for Phase Four Trial*.

26 ///

27 ///

1 Each supplemental response is identified by reference to specific responses and  
2 documents provided in the **Baxter Mutual Water Company** section of *Cross-Defendant/Cross-*  
3 *Complainant, Antelope Valley United Mutual Group's Information and Materials Responsive*  
4 *To December 12, 2012 Discovery Order For Phase 4 Trial* (the "Original Responses").

5 These Supplemental Responses are verified by Larry Gorden, whose name and title are  
6 set forth in the Verification block at the end of these supplemental Responses. Mr. Gorden is  
7 authorized to make said verification on behalf of the Baxter Mutual Water Company. Mr.  
8 Gorden has personal knowledge that the data and the documentation provided by these  
9 Supplemental Responses were collected and are maintained by Baxter Mutual Water Company's  
10 employees, agents and vendors in the ordinary course of Baxter Mutual Water Company's  
11 business. Mr. Gorden has obtained (or caused to be obtained) the data and documentation  
12 provided by the Supplemental Responses from the business records of Baxter Mutual Water  
13 Company. Mr. Gorden has reviewed these Supplemental Responses and believes the data and  
14 documentation to be true and correct to the best of his knowledge and belief.

1 **BAXTER MUTUAL WATER COMPANY**

2

3 **Original Response I.1.e.vi.** providing groundwater production data for the year 2011 is  
4 supplemented to replace “Pending receipt of data” with “44.91 acre feet”.

5

6 **Original Response I.1.i. Other Facts Supporting Claim** is amended to include the following  
7 italicized language: “Baxter groundwater production figures for the years 2000-2004 *and 2011*  
8 were determined using Southern California Edison (“Edison”) records...”

9

10 **Original Response I.3.a. *Prima Facie* Groundwater Production Materials** included  
11 documents which were attached but not specifically referenced in the responses due to the  
12 necessary haste in which those responses were prepared in order to comply with the December  
13 21, 2012 deadline.

14

15 **Original Response I.3.a. *Prima Facie* Groundwater Production Materials** is amended as  
16 follows:

- 17
- 18 • Original Response I.3.a.iv.1, which currently references Southern California Edison  
19 Electrical Billing Histories for the date range January 2000 – December 2004 is amended  
20 to reflect the more complete date range of January 1988 – December 2011 provided in  
21 Original Response Attachment I.3.a.i.

22 **Original Response I.3.a. *Prima Facie* Groundwater Production Materials** is supplemented to  
23 include references to the following additional documents:

- 24
- 25 • Baxter Mutual Water Co. Water usage 2000-2004 and 2011-2012 summary spreadsheets.
  - 26 • Southern California Edison electrical billing history Jan. 1988 through Dec. 2011.
  - 27 • Southern California Edison electrical usage data Jan. and Feb. 2012.

- 1 • Baxter Mutual Water Company Southern California Edison and Flowmeter readings,
- 2 Dec. 2, 2011 through Jan. 1, 2013 (photographs).
- 3 • Baxter Mutual Water Company Well Water Extraction report by Larry Gorden, Dec. 22,
- 4 2012.
- 5 • Baxter Mutual Water Distribution aerial photograph.
- 6

7 **Original Response I.3.b. *Prima Facie* Property Uses Materials** included documents which  
8 were attached but not specifically referenced in the responses due to the necessary haste in which  
9 those responses were prepared in order to comply with the December 21, 2012 deadline.

10  
11 **Original Response I.3.b. *Prima Facie* Property Uses Materials** is supplemented to include  
12 references to the following additional documents:

- 13 • Baxter Mutual Water Company property served (aerial photograph).
- 14

15 **Original Response I.3.c. Additional Materials** included documents which were attached but  
16 not specifically referenced in the responses due to the necessary haste in which those responses  
17 were prepared in order to comply with the December 21, 2012 deadline.

18  
19 **Original Response I.3.c. Additional Materials** is supplemented to include references to the  
20 following additional documents:

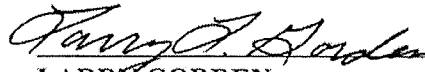
- 21 • Baxter Mutual Water Company Articles of Incorporation.
- 22 • By-laws of Baxter Mutual Water Company.
- 23 • Baxter Mutual Water Company share certificate (sample).
- 24
- 25
- 26
- 27

1 **Verification by Authorized Individual:**

2 I, Larry Gorden, am the Vice President of the Baxter Mutual Water Company and have  
3 personal knowledge of the facts set forth above.

4 If called to do so, I could and would competently testify to these facts under oath. I  
5 declare under penalty of perjury under the laws of the State of California that the foregoing is  
6 true and correct.

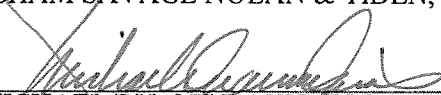
7 Executed this 25 th day of January, 2013 at Lancaster, CA.

8  
9   
10 **LARRY GORDEN**

11 Respectfully submitted,

12 GRESHAM SAVAGE NOLAN & TIDEN, PC

13 By:

14   
15 **MICHAEL DUANE DAVIS, ESQ.**  
16 **MARLENE L. ALLEN-HAMMARLUND, ESQ.**  
17 **DEREK R. HOFFMAN, ESQ.**  
18 Attorneys for CROSS-DEFENDANT / CROSS-  
19 COMPLAINANT, ANTELOPE VALLEY UNITED  
20 MUTUAL GROUP; and CROSS-DEFENDANTS,  
21 ADAMS BENNETT INVESTMENTS, LLC, MIRACLE  
22 IMPROVEMENT CORPORATION dba GOLDEN  
23 SANDS MOBILE HOME PARK, aka GOLDEN  
24 SANDS TRAILER PARK [ROE 1121], ST.  
25 ANDREW'S ABBEY, INC. [ROE 623], SERVICE  
26 ROCK PRODUCTS, L.P., and SHEEP CREEK WATER  
27 COMPANY, INC.

28 GRESHAM | SAVAGE  
ATTORNEYS AT LAW  
3750 UNIVERSITY AVE  
STE. 250  
RIVERSIDE, CA 92501-3335  
(951) 684-2171

1  
2  
3  
4  
5  
6  
7  
8  
9  
10  
11  
12  
13  
14  
15  
16  
17  
18  
19  
20  
21  
22  
23  
24  
25  
26  
27  
28

**PROOF OF SERVICE  
STATE OF CALIFORNIA, COUNTY OF RIVERSIDE**

Re: *ANTELOPE VALLEY GROUNDWATER CASES*  
Los Angeles County Superior Court Judicial Council Coordinated  
Proceedings No. 4408; Santa Clara County Superior Court Case No. 1-05-CV-049053

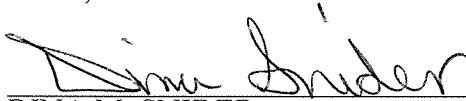
I am employed in the County of Riverside, State of California. I am over the age of 18 years and not a party to the within action; my business address is: 3750 University Avenue, Suite 250, Riverside, CA 92501-3335.

On January 30, 2013, I served the foregoing document(s) described as **CROSS-DEFENDANT/CROSS-COMPLAINANT, ANTELOPE VALLEY UNITED MUTUAL GROUP, SPECIFICALLY BAXTER MUTUAL WATER COMPANY'S, FIRST SUPPLEMENTAL RESPONSE TO DECEMBER 12, 2012 DISCOVERY ORDER FOR PHASE 4 TRIAL** on the interested parties in this action in the following manner:

( X ) **BY ELECTRONIC SERVICE** – I posted the document(s) listed above to the Santa Clara County Superior Court website, <http://www.scefiling.org>, in the action of the Antelope Valley Groundwater Cases,

I declare under penalty of perjury under the laws of the State of California that the foregoing is true and correct.

Executed on January 30, 2013, at Riverside, California.

  
DINA M. SNIDER

**BAXTER MUTUAL WATER COMPANY**

**Attachment I.3.a.i.**

1  
2  
3  
4  
5  
6  
7  
8  
9  
10  
11  
12  
13  
14  
15  
16  
17  
18  
19  
20  
21  
22  
23  
24  
25  
26  
27

28  
GRESHAM | SAVAGE  
ATTORNEYS AT LAW  
3750 UNIVERSITY AVE.  
STE. 250  
RIVERSIDE, CA 92501-3335  
(951) 684-2171

---

CROSS-DEFENDANT/CROSS-COMPLAINANT, ANTELOPE VALLEY UNITED MUTUAL GROUP, SPECIFICALLY  
BAXTER MUTUAL WATER COMPANY'S, FIRST SUPPLEMENTAL RESPONSE TO DECEMBER 12, 2012  
DISCOVERY ORDER FOR PHASE 4 TRIAL



**Baxter Mutual Water Co. Water usage 2000-2004 and 2011**

rate = Main pump rate + pressure pump rate = 644 + 209 = 853 KWH/Acre-Ft

<u>Meter Read Date</u>	<u>KWH Usage</u>	<u>KWH in year</u>	<u>Acre Ft in year</u>
1/17/2000			
2/16/2000	1,200		
4/14/2000	3,024		
5/15/2000	1,224		
6/15/2000	1,224		
8/15/2000	21,984		
9/14/2000	5,808		
10/16/2000	5,760		
1/17/2001	3,744	43,968	51.55
2/15/2001	1,368		
3/19/2001	1,512		
4/17/2001	1,392		
5/16/2001	1,368		
6/14/2001	4,560		
7/16/2001	6,576		
8/14/2001	7,464		
9/14/2001	5,736		
10/16/2001	6,168		
11/15/2001	1,728		
12/14/2001	96		
1/16/2002	1,272	39,240	46.00
2/14/2002	1152		
3/19/2002	888		
4/16/2002	3,648		
5/16/2002	4,944		
6/17/2002	4,800		
7/16/2002	5,952		
8/14/2002	3,720		
9/16/2002	6,096		
10/16/2002	5,784		
11/18/2002	288		
12/16/2002	168		
1/16/2003	3,168	40,608	47.61
2/18/2003	3,384		
3/19/2003	2,040		
4/21/2003	4,008		
5/16/2003	4,008		
6/17/2003	4,800		
7/16/2003	5,952		
8/14/2003	5,952		
9/15/2003	5,976		
10/16/2003	4,752		
11/17/2003	3,240		
12/17/2003	1,128		

<u>Meter Read Date</u>	<u>KWH Usage</u>	<u>KWH in year</u>	<u>Acre Ft in year</u>
1/19/2004	792	46,032	53.96
2/18/2004	720		
3/17/2004	1,320		
4/16/2004	7,488		
5/17/2004	4,968		
6/16/2004	336		
7/16/2004	7,008		
8/16/2004	8,184		
9/15/2004	6,144		
10/18/2004	5,208		
11/16/2004	1,488		
12/16/2004	1,080		
1/18/2005	792	44,736	52.45

---

**2011**

1/17/2011			
2/15/2011	864		
3/17/2011	984		
4/18/2011	1,944		
5/16/2011	3,096		
6/15/2011	3,912		
7/15/2011	5,568		
8/16/2011	6,216		
9/15/2011	5,832		
10/18/2011	5,952		
11/17/2011	2,256		
12/16/2011	384		
1/18/2012	1,296	38,304	44.91

**Baxter Mutual Water Co. Water usage 2000-2004 (Jan 17, 2000 thru Jan 18, 2005)**

rate = Main pump rate + pressure pump rate =

853 KWH/Acre-Ft

<b>Meter Read Date</b>	<b>KWH Usage</b>
1/17/2011	
2/15/2011	864
3/17/2011	984
4/18/2011	1,944
5/16/2011	3,096
6/15/2011	3,912
7/15/2011	5,568
8/16/2011	6,216
9/15/2011	5,832
10/18/2011	5,952
11/17/2011	2,256
12/16/2011	384
1/18/2012	1296
<b>Total</b>	<b>38,304 KWH</b>

rate = Main pump rate + pressure pump rate = 64 853 KWH/Acre-Ft

Divide Total KWH by 853 KWH/Acre-Ft to get

**44.91 Acre Ft. water pumped in 2011**

## **Baxter Mutual Water Co. Water usage Dec 1, 2011 through Dec 1, 2012**

Meter Reading Dec 1, 2011	286600 gal		
Meter Reading Dec 1, 2012	13693300 gal		
Difference (usage)	13406700 gal	=	41.1436 Acre Ft

2000-2004 and 2011 summary

rate = Main pump rate + pressure pump rate = 644 + 209 = 853 KWH/Acre-Ft

***Year KWH in year Acre Ft in year***

2000	43968	51.5
2001	39240	46.0
2002	40608	47.6
2003	46032	54.0
2004	44736	52.4
2011	38304	44.9

Printout from Edison

Baxter Mutual Water Company  
Electrical Billing History

①

Cust Name	Serv Acct Num	Current Rate	Meter Num	Street Addr	City Name	Zip	Billing Mo/Yr	Meter Read Date	Stmt Rate	Bill Amt	KWH Usage	City Tax	State Tax	Maximum KW	Billing Days
BAXTER MUTUAL WATER COMPANY	3634921	PA-1	835-000256	12501 E AVENUE H	LANCASTER	93535	January, 1988	01/19/88	PA-1	\$103.47	790	\$0.00	\$0.00	0.0	33
BAXTER MUTUAL WATER COMPANY	3634921	PA-1	835-000256	12501 E AVENUE H	LANCASTER	93535	February, 1988	02/18/88	PA-1	\$100.73	700	\$0.00	\$0.00	0.0	30
BAXTER MUTUAL WATER COMPANY	3634921	PA-1	835-000256	12501 E AVENUE H	LANCASTER	93535	March, 1988	03/18/88	PA-1	\$143.10	1,230	\$0.00	\$0.00	0.0	29
BAXTER MUTUAL WATER COMPANY	3634921	PA-1	835-000256	12501 E AVENUE H	LANCASTER	93535	April, 1988	04/18/88	PA-1	\$271.97	2,840	\$0.00	\$0.00	0.0	31
BAXTER MUTUAL WATER COMPANY	3634921	PA-1	835-000256	12501 E AVENUE H	LANCASTER	93535	May, 1988	05/17/88	PA-1	\$264.78	2,750	\$0.00	\$0.00	0.0	29
BAXTER MUTUAL WATER COMPANY	3634921	PA-1	835-000256	12501 E AVENUE H	LANCASTER	93535	June, 1988	06/17/88	PA-1	\$393.73	4,270	\$0.00	\$0.00	0.0	31
BAXTER MUTUAL WATER COMPANY	3634921	PA-1	835-000256	12501 E AVENUE H	LANCASTER	93535	July, 1988	07/18/88	PA-1	\$493.50	5,390	\$0.00	\$0.00	0.0	31
BAXTER MUTUAL WATER COMPANY	3634921	PA-1	835-000256	12501 E AVENUE H	LANCASTER	93535	August, 1988	08/17/88	PA-1	\$476.94	5,190	\$0.00	\$0.00	0.0	30
BAXTER MUTUAL WATER COMPANY	3634921	PA-1	835-000256	12501 E AVENUE H	LANCASTER	93535	September, 1988	09/15/88	PA-1	\$439.67	4,740	\$0.00	\$0.00	0.0	29
BAXTER MUTUAL WATER COMPANY	3634921	PA-1	835-000256	12501 E AVENUE H	LANCASTER	93535	October, 1988	10/17/88	PA-1	\$393.13	4,060	\$0.00	\$0.00	0.0	32
BAXTER MUTUAL WATER COMPANY	3634921	PA-1	835-000256	12501 E AVENUE H	LANCASTER	93535	November, 1988	11/17/88	PA-1	\$260.11	2,420	\$0.00	\$0.00	0.0	31
BAXTER MUTUAL WATER COMPANY	3634921	PA-1	835-000256	12501 E AVENUE H	LANCASTER	93535	December, 1988	12/16/88	PA-1	\$121.67	830	\$0.00	\$0.00	0.0	29
BAXTER MUTUAL WATER COMPANY	3634921	PA-1	835-000256	12501 E AVENUE H	LANCASTER	93535	January, 1989	01/18/89	PA-1	\$109.05	680	\$0.00	\$0.00	0.0	33
BAXTER MUTUAL WATER COMPANY	3634921	PA-1	835-000256	12501 E AVENUE H	LANCASTER	93535	February, 1989	02/17/89	PA-1	\$96.30	530	\$0.00	\$0.00	0.0	30
BAXTER MUTUAL WATER COMPANY	3634921	PA-1	835-000256	12501 E AVENUE H	LANCASTER	93535	March, 1989	03/20/89	PA-1	\$208.03	1,790	\$0.00	\$0.00	0.0	31
BAXTER MUTUAL WATER COMPANY	3634921	PA-1	835-000256	12501 E AVENUE H	LANCASTER	93535	April, 1989	04/18/89	PA-1	\$320.58	3,060	\$0.00	\$0.00	0.0	29
BAXTER MUTUAL WATER COMPANY	3634921	PA-1	835-000256	12501 E AVENUE H	LANCASTER	93535	May, 1989	05/16/89	PA-1	\$430.47	4,300	\$0.00	\$0.00	0.0	28
BAXTER MUTUAL WATER COMPANY	3634921	PA-1	835-000256	12501 E AVENUE H	LANCASTER	93535	June, 1989	06/16/89	PA-1	\$412.74	4,100	\$0.00	\$0.00	0.0	31
BAXTER MUTUAL WATER COMPANY	3634921	PA-1	835-000256	12501 E AVENUE H	LANCASTER	93535	July, 1989	07/19/89	PA-1	\$517.26	5,270	\$0.00	\$0.00	0.0	33
BAXTER MUTUAL WATER COMPANY	3634921	PA-1	835-000256	12501 E AVENUE H	LANCASTER	93535	August, 1989	08/16/89	PA-1	\$510.84	5,190	\$0.00	\$0.00	0.0	28
BAXTER MUTUAL WATER COMPANY	3634921	PA-1	835-000256	12501 E AVENUE H	LANCASTER	93535	September, 1989	09/18/89	PA-1	\$607.75	6,280	\$0.00	\$0.00	0.0	33
BAXTER MUTUAL WATER COMPANY	3634921	PA-1	835-000256	12501 E AVENUE H	LANCASTER	93535	October, 1989	10/18/89	PA-1	\$423.72	4,210	\$0.00	\$0.00	0.0	30
BAXTER MUTUAL WATER COMPANY	3634921	PA-1	835-000256	12501 E AVENUE H	LANCASTER	93535	November, 1989	11/16/89	PA-1	\$316.15	3,000	\$0.00	\$0.00	0.0	29
BAXTER MUTUAL WATER COMPANY	3634921	PA-1	835-000256	12501 E AVENUE H	LANCASTER	93535	December, 1989	12/18/89	PA-1	\$180.13	1,470	\$0.00	\$0.00	0.0	32
BAXTER MUTUAL WATER COMPANY	3634921	PA-1	835-000256	12501 E AVENUE H	LANCASTER	93535	January, 1990	01/18/90	PA-1	\$151.69	1,150	\$0.00	\$0.00	0.0	31
BAXTER MUTUAL WATER COMPANY	3634921	PA-1	835-000256	12501 E AVENUE H	LANCASTER	93535	February, 1990	02/16/90	PA-1	\$111.09	700	\$0.00	\$0.00	0.0	29
BAXTER MUTUAL WATER COMPANY	3634921	PA-1	835-000256	12501 E AVENUE H	LANCASTER	93535	March, 1990	03/20/90	PA-1	\$182.96	1,530	\$0.00	\$0.00	0.0	32
BAXTER MUTUAL WATER COMPANY	3634921	PA-1	835-000256	12501 E AVENUE H	LANCASTER	93535	April, 1990	04/18/90	PA-1	\$285.05	2,700	\$0.00	\$0.00	0.0	29
BAXTER MUTUAL WATER COMPANY	3634921	PA-1	835-000256	12501 E AVENUE H	LANCASTER	93535	May, 1990	05/16/90	PA-1	\$326.06	3,170	\$0.00	\$0.00	0.0	28
BAXTER MUTUAL WATER COMPANY	3634921	PA-1	835-000256	12501 E AVENUE H	LANCASTER	93535	June, 1990	06/15/90	PA-1	\$439.50	4,470	\$0.00	\$0.00	0.0	30
BAXTER MUTUAL WATER COMPANY	3634921	PA-1	835-000256	12501 E AVENUE H	LANCASTER	93535	July, 1990	07/18/90	PA-1	\$552.86	5,580	\$0.00	\$0.00	0.0	33
BAXTER MUTUAL WATER COMPANY	3634921	PA-1	835-000256	12501 E AVENUE H	LANCASTER	93535	August, 1990	08/14/90	PA-1	\$538.02	5,410	\$0.00	\$0.00	0.0	27
BAXTER MUTUAL WATER COMPANY	3634921	PA-1	835-000256	12501 E AVENUE H	LANCASTER	93535	September, 1990	09/14/90	PA-1	\$426.34	4,130	\$0.00	\$0.00	0.0	31
BAXTER MUTUAL WATER COMPANY	3634921	PA-1	835-000256	12501 E AVENUE H	LANCASTER	93535	October, 1990	10/17/90	PA-1	\$354.31	3,270	\$0.00	\$0.00	0.0	33
BAXTER MUTUAL WATER COMPANY	3634921	PA-1	835-000256	12501 E AVENUE H	LANCASTER	93535	November, 1990	11/17/90	PA-1	\$299.22	2,640	\$0.00	\$0.00	0.0	31
BAXTER MUTUAL WATER COMPANY	3634921	PA-1	835-000256	12501 E AVENUE H	LANCASTER	93535	December, 1990	12/18/90	PA-1	\$180.87	1,300	\$0.00	\$0.00	0.0	31
BAXTER MUTUAL WATER COMPANY	3634921	PA-1	835-000256	12501 E AVENUE H	LANCASTER	93535	January, 1991	01/18/91	PA-1	\$145.21	860	\$0.00	\$0.00	0.0	31
BAXTER MUTUAL WATER COMPANY	3634921	PA-1	835-000256	12501 E AVENUE H	LANCASTER	93535	February, 1991	02/20/91	PA-1	\$184.15	1,160	\$8.76	\$0.00	0.0	33
BAXTER MUTUAL WATER COMPANY	3634921	PA-1	835-000256	12501 E AVENUE H	LANCASTER	93535	March, 1991	03/20/91	PA-1	\$155.23	860	\$7.38	\$0.00	0.0	28
BAXTER MUTUAL WATER COMPANY	3634921	PA-1	835-000256	12501 E AVENUE H	LANCASTER	93535	April, 1991	04/18/91	PA-1	\$184.15	1,160	\$8.76	\$0.00	0.0	29
BAXTER MUTUAL WATER COMPANY	3634921	PA-1	835-000256	12501 E AVENUE H	LANCASTER	93535	May, 1991	05/20/91	PA-1	\$309.44	2,460	\$14.71	\$0.00	0.0	32
BAXTER MUTUAL WATER COMPANY	3634921	PA-1	835-000256	12501 E AVENUE H	LANCASTER	93535	June, 1991	06/18/91	PA-1	\$455.94	3,980	\$21.67	\$0.00	0.0	29
BAXTER MUTUAL WATER COMPANY	3634921	PA-1	835-000256	12501 E AVENUE H	LANCASTER	93535	July, 1991	07/19/91	PA-1	\$629.43	5,780	\$29.92	\$0.00	0.0	31
BAXTER MUTUAL WATER COMPANY	3634921	PA-1	835-000256	12501 E AVENUE H	LANCASTER	93535	August, 1991	08/19/91	PA-1	\$698.82	6,500	\$33.22	\$0.00	0.0	31
BAXTER MUTUAL WATER COMPANY	3634921	PA-1	835-000256	12501 E AVENUE H	LANCASTER	93535	September, 1991	09/16/91	PA-1	\$657.37	6,070	\$31.25	\$0.00	0.0	28
BAXTER MUTUAL WATER COMPANY	3634921	PA-1	835-000256	12501 E AVENUE H	LANCASTER	93535	October, 1991	10/17/91	PA-1	\$609.18	5,570	\$28.96	\$0.00	0.0	31
BAXTER MUTUAL WATER COMPANY	3634921	PA-1	835-000256	12501 E AVENUE H	LANCASTER	93535	November, 1991	11/19/91	PA-1	\$347.03	2,850	\$16.50	\$0.00	0.0	33
BAXTER MUTUAL WATER COMPANY	3634921	PA-1	835-000256	12501 E AVENUE H	LANCASTER	93535	December, 1991	12/18/91	PA-1	\$198.61	1,310	\$9.45	\$0.00	0.0	29
BAXTER MUTUAL WATER COMPANY	3634921	PA-1	835-000256	12501 E AVENUE H	LANCASTER	93535	January, 1992	01/20/92	PA-1	\$174.51	1,060	\$8.30	\$0.00	0.0	33

**Baxter Mutual Water Company  
Electrical Billing History**

BAXTER MUTUAL WATER COMPANY	3634921	PA-1	835-000256	12501 E AVENUE H	LANCASTER	93535	February, 1992	02/14/92	PA-1	\$139.16	800	\$6.62	\$0.00	0.0	25
BAXTER MUTUAL WATER COMPANY	3634921	PA-1	835-000256	12501 E AVENUE H	LANCASTER	93535	March, 1992	03/17/92	PA-1	\$187.62	1,170	\$8.92	\$0.00	0.0	32
BAXTER MUTUAL WATER COMPANY	3634921	PA-1	835-000256	12501 E AVENUE H	LANCASTER	93535	April, 1992	04/15/92	PA-1	\$198.45	1,280	\$9.44	\$0.00	0.0	29
BAXTER MUTUAL WATER COMPANY	3634921	PA-1	835-000256	12501 E AVENUE H	LANCASTER	93535	May, 1992	05/13/92	PA-1	\$359.67	2,920	\$17.10	\$0.00	0.0	28
BAXTER MUTUAL WATER COMPANY	3634921	PA-1	835-000256	12501 E AVENUE H	LANCASTER	93535	June, 1992	06/11/92	PA-1	\$515.89	4,480	\$24.52	\$0.00	0.0	29
BAXTER MUTUAL WATER COMPANY	3634921	PA-1	835-000256	12501 E AVENUE H	LANCASTER	93535	July, 1992	07/15/92	PA-1	\$707.45	6,100	\$33.63	\$0.00	0.0	34
BAXTER MUTUAL WATER COMPANY	3634921	PA-1	835-000256	12501 E AVENUE H	LANCASTER	93535	August, 1992	08/13/92	PA-1	\$695.25	6,090	\$33.05	\$0.00	0.0	29
BAXTER MUTUAL WATER COMPANY	3634921	PA-1	835-000256	12501 E AVENUE H	LANCASTER	93535	September, 1992	09/14/92	PA-1	\$729.37	6,430	\$34.67	\$0.00	0.0	32
BAXTER MUTUAL WATER COMPANY	3634921	PA-1	835-000256	12501 E AVENUE H	LANCASTER	93535	October, 1992	10/15/92	PA-1	\$590.87	5,050	\$28.09	\$0.00	0.0	31
BAXTER MUTUAL WATER COMPANY	3634921	PA-1	835-000256	12501 E AVENUE H	LANCASTER	93535	November, 1992	11/16/92	PA-1	\$307.76	2,176	\$14.38	\$0.00	26.6	32
BAXTER MUTUAL WATER COMPANY	3634921	PA-1	835-000256	12501 E AVENUE H	LANCASTER	93535	December, 1992	12/15/92	PA-1	\$243.03	1,584	\$11.56	\$0.00	24.5	29
BAXTER MUTUAL WATER COMPANY	3634921	PA-1	835-000256	12501 E AVENUE H	LANCASTER	93535	January, 1993	01/20/93	PA-1	\$302.34	1,992	\$14.38	\$0.00	23.3	36
BAXTER MUTUAL WATER COMPANY	3634921	PA-1	835-000256	12501 E AVENUE H	LANCASTER	93535	February, 1993	02/16/93	PA-1	\$192.09	984	\$9.14	\$0.00	22.8	27
BAXTER MUTUAL WATER COMPANY	3634921	PA-1	835-000256	12501 E AVENUE H	LANCASTER	93535	March, 1993	03/16/93	PA-1	\$175.21	816	\$8.34	\$0.00	23.0	28
BAXTER MUTUAL WATER COMPANY	3634921	PA-1	835-000256	12501 E AVENUE H	LANCASTER	93535	April, 1993	04/14/93	PA-1	\$242.71	1,488	\$11.54	\$0.00	30.2	29
BAXTER MUTUAL WATER COMPANY	3634921	PA-1	835-000256	12501 E AVENUE H	LANCASTER	93535	May, 1993	05/12/93	PA-1	\$382.55	2,880	\$18.19	\$0.00	30.2	28
BAXTER MUTUAL WATER COMPANY	3634921	PA-1	835-000256	12501 E AVENUE H	LANCASTER	93535	June, 1993	06/14/93	PA-1	\$527.19	4,320	\$25.06	\$0.00	31.2	33
BAXTER MUTUAL WATER COMPANY	3634921	PA-1	835-000256	12501 E AVENUE H	LANCASTER	93535	July, 1993	07/14/93	PA-1	\$664.62	5,688	\$31.59	\$0.00	30.7	30
BAXTER MUTUAL WATER COMPANY	3634921	PA-1	835-000256	12501 E AVENUE H	LANCASTER	93535	August, 1993	08/16/93	PA-1	\$789.99	6,936	\$37.55	\$0.00	31.2	33
BAXTER MUTUAL WATER COMPANY	3634921	PA-1	835-000256	12501 E AVENUE H	LANCASTER	93535	September, 1993	09/14/93	PA-1	\$650.16	5,544	\$30.91	\$0.00	37.2	29
BAXTER MUTUAL WATER COMPANY	3634921	PA-1	835-000256	12501 E AVENUE H	LANCASTER	93535	October, 1993	10/13/93	PA-1	\$500.68	4,056	\$23.80	\$0.00	30.5	29
BAXTER MUTUAL WATER COMPANY	3634921	PA-1	835-000256	12501 E AVENUE H	LANCASTER	93535	November, 1993	11/10/93	PA-1	\$348.49	2,496	\$16.36	\$0.00	30.5	28
BAXTER MUTUAL WATER COMPANY	3634921	PA-1	835-000256	12501 E AVENUE H	LANCASTER	93535	December, 1993	12/14/93	PA-1	\$282.40	1,728	\$13.28	\$0.00	31.0	34
BAXTER MUTUAL WATER COMPANY	3634921	PA-1	835-000256	12501 E AVENUE H	LANCASTER	93535	January, 1994	01/14/94	PA-1	\$194.49	1,008	\$9.25	\$0.00	26.6	31
BAXTER MUTUAL WATER COMPANY	3634921	PA-1	835-000256	12501 E AVENUE H	LANCASTER	93535	February, 1994	02/14/94	PA-1	\$211.82	1,056	\$10.08	\$0.00	26.2	31
BAXTER MUTUAL WATER COMPANY	3634921	PA-1	835-000256	12501 E AVENUE H	LANCASTER	93535	March, 1994	03/15/94	PA-1	\$217.77	1,056	\$10.36	\$0.00	26.4	29
BAXTER MUTUAL WATER COMPANY	3634921	PA-1	835-000256	12501 E AVENUE H	LANCASTER	93535	April, 1994	04/13/94	PA-1	\$337.17	2,184	\$15.94	\$0.00	29.8	29
BAXTER MUTUAL WATER COMPANY	3634921	PA-1	835-000256	12501 E AVENUE H	LANCASTER	93535	May, 1994	05/16/94	PA-1	\$465.14	3,432	\$22.12	\$0.00	30.7	33
BAXTER MUTUAL WATER COMPANY	3634921	PA-1	835-000256	12501 E AVENUE H	LANCASTER	93535	June, 1994	06/15/94	PA-1	\$535.09	4,104	\$25.44	\$0.00	31.2	30
BAXTER MUTUAL WATER COMPANY	3634921	PA-1	835-000256	12501 E AVENUE H	LANCASTER	93535	July, 1994	07/18/94	PA-1	\$782.46	6,480	\$37.20	\$0.00	31.2	33
BAXTER MUTUAL WATER COMPANY	3634921	PA-1	835-000256	12501 E AVENUE H	LANCASTER	93535	August, 1994	08/15/94	PA-1	\$752.47	6,192	\$35.77	\$0.00	31.2	28
BAXTER MUTUAL WATER COMPANY	3634921	PA-1	835-000256	12501 E AVENUE H	LANCASTER	93535	September, 1994	09/14/94	PA-1	\$685.01	5,544	\$32.57	\$0.00	31.2	30
BAXTER MUTUAL WATER COMPANY	3634921	PA-1	835-000256	12501 E AVENUE H	LANCASTER	93535	October, 1994	10/12/94	PA-1	\$546.26	4,152	\$25.68	\$0.00	31.0	28
BAXTER MUTUAL WATER COMPANY	3634921	PA-1	835-000256	12501 E AVENUE H	LANCASTER	93535	November, 1994	11/14/94	PA-1	\$397.67	2,784	\$18.91	\$0.00	31.0	33
BAXTER MUTUAL WATER COMPANY	3634921	PA-1	835-000256	12501 E AVENUE H	LANCASTER	93535	December, 1994	12/13/94	PA-1	\$252.75	1,392	\$12.02	\$0.00	22.6	29
BAXTER MUTUAL WATER COMPANY	3634921	PA-1	835-000256	12501 E AVENUE H	LANCASTER	93535	January, 1995	01/13/95	PA-1	\$229.14	1,104	\$10.79	\$0.00	21.8	31
BAXTER MUTUAL WATER COMPANY	3634921	PA-1	835-000256	12501 E AVENUE H	LANCASTER	93535	February, 1995	02/15/95	PA-1	\$218.16	936	\$10.28	\$0.00	21.4	33
BAXTER MUTUAL WATER COMPANY	3634921	PA-1	835-000256	12501 E AVENUE H	LANCASTER	93535	March, 1995	03/16/95	PA-1	\$243.23	1,200	\$11.57	\$0.00	27.1	29
BAXTER MUTUAL WATER COMPANY	3634921	PA-1	835-000256	12501 E AVENUE H	LANCASTER	93535	April, 1995	04/14/95	PA-1	\$277.76	1,536	\$13.21	\$0.00	27.6	29
BAXTER MUTUAL WATER COMPANY	3634921	PA-1	835-000256	12501 E AVENUE H	LANCASTER	93535	May, 1995	05/15/95	PA-1	\$354.22	2,280	\$16.85	\$0.00	27.8	31
BAXTER MUTUAL WATER COMPANY	3634921	PA-1	835-000256	12501 E AVENUE H	LANCASTER	93535	June, 1995	06/14/95	PA-1	\$524.39	3,936	\$24.93	\$0.00	30.5	30
BAXTER MUTUAL WATER COMPANY	3634921	PA-1	835-000256	12501 E AVENUE H	LANCASTER	93535	July, 1995	07/14/95	PA-1	\$706.90	5,712	\$33.61	\$0.00	31.4	30
BAXTER MUTUAL WATER COMPANY	3634921	PA-1	835-000256	12501 E AVENUE H	LANCASTER	93535	August, 1995	08/14/95	PA-1	\$758.69	6,216	\$36.07	\$0.00	31.4	31
BAXTER MUTUAL WATER COMPANY	3634921	PA-1	835-000256	12501 E AVENUE H	LANCASTER	93535	September, 1995	09/13/95	PA-1	\$711.83	5,760	\$33.84	\$0.00	31.2	30
BAXTER MUTUAL WATER COMPANY	3634921	PA-1	835-000256	12501 E AVENUE H	LANCASTER	93535	October, 1995	10/13/95	PA-1	\$507.12	3,768	\$24.11	\$0.00	32.6	30
BAXTER MUTUAL WATER COMPANY	3634921	PA-1	835-000256	12501 E AVENUE H	LANCASTER	93535	November, 1995	11/14/95	PA-1	\$531.79	4,008	\$25.29	\$0.00	32.6	32
BAXTER MUTUAL WATER COMPANY	3634921	PA-1	835-000256	12501 E AVENUE H	LANCASTER	93535	December, 1995	12/13/95	PA-1	\$322.14	1,968	\$15.32	\$0.39	30.2	29
BAXTER MUTUAL WATER COMPANY	3634921	PA-1	835-000256	12501 E AVENUE H	LANCASTER	93535	January, 1996	01/16/96	PA-1	\$315.94	1,752	\$15.03	\$0.35	27.1	34
BAXTER MUTUAL WATER COMPANY	3634921	PA-1	835-000256	12501 E AVENUE H	LANCASTER	93535	February, 1996	02/14/96	PA-1	\$277.76	1,536	\$13.21	\$0.31	24.5	29
BAXTER MUTUAL WATER COMPANY	3634921	PA-1	835-000256	12501 E AVENUE H	LANCASTER	93535	March, 1996	03/14/96	PA-1	\$223.49	1,008	\$10.63	\$0.20	27.8	29

**Baxter Mutual Water Company  
Electrical Billing History**

BAXTER MUTUAL WATER COMPANY	3634921	PA-1	835-000256	12501 E AVENUE H	LANCASTER	93535	April, 1996	04/12/96	PA-1	\$349.28	2,232	\$16.61	\$0.45	29.3	29
BAXTER MUTUAL WATER COMPANY	3634921	PA-1	835-000256	12501 E AVENUE H	LANCASTER	93535	May, 1996	05/15/96	PA-1	\$499.77	3,768	\$23.76	\$0.75	32.2	33
BAXTER MUTUAL WATER COMPANY	3634921	PA-1	835-000256	12501 E AVENUE H	LANCASTER	93535	June, 1996	06/14/96	PA-1	\$393.98	4,176	\$18.72	\$0.84	31.9	30
BAXTER MUTUAL WATER COMPANY	3634921	PA-1	835-000256	12501 E AVENUE H	LANCASTER	93535	July, 1996	07/17/96	PA-1	\$760.79	6,576	\$36.17	\$1.32	32.4	33
BAXTER MUTUAL WATER COMPANY	3634921	PA-1	835-000256	12501 E AVENUE H	LANCASTER	93535	August, 1996	08/16/96	PA-1	\$758.47	6,552	\$36.06	\$1.31	32.4	30
BAXTER MUTUAL WATER COMPANY	3634921	PA-1	835-000256	12501 E AVENUE H	LANCASTER	93535	September, 1996	09/17/96	PA-1	\$719.80	6,384	\$34.22	\$1.28	32.6	32
BAXTER MUTUAL WATER COMPANY	3634921	PA-1	835-000256	12501 E AVENUE H	LANCASTER	93535	October, 1996	10/16/96	PA-1	\$510.64	3,984	\$24.28	\$0.80	31.4	29
BAXTER MUTUAL WATER COMPANY	3634921	PA-1	835-000256	12501 E AVENUE H	LANCASTER	93535	November, 1996	11/18/96	PA-1	\$348.50	2,304	\$16.57	\$0.46	31.0	33
BAXTER MUTUAL WATER COMPANY	3634921	PA-1	835-000256	12501 E AVENUE H	LANCASTER	93535	December, 1996	12/17/96	PA-1	\$237.33	1,152	\$11.29	\$0.23	26.6	29
BAXTER MUTUAL WATER COMPANY	3634921	PA-1	835-000256	12501 E AVENUE H	LANCASTER	93535	January, 1997	01/17/97	PA-1	\$209.54	864	\$9.97	\$0.17	23.8	31
BAXTER MUTUAL WATER COMPANY	3634921	PA-1	835-000256	12501 E AVENUE H	LANCASTER	93535	February, 1997	02/14/97	PA-1	\$197.96	744	\$9.42	\$0.15	23.8	28
BAXTER MUTUAL WATER COMPANY	3634921	PA-1	835-000256	12501 E AVENUE H	LANCASTER	93535	March, 1997	03/17/97	PA-1	\$285.97	1,656	\$13.60	\$0.33	28.8	31
BAXTER MUTUAL WATER COMPANY	3634921	PA-1	835-000256	12501 E AVENUE H	LANCASTER	93535	April, 1997	04/16/97	PA-1	\$401.78	2,856	\$19.11	\$0.57	31.7	30
BAXTER MUTUAL WATER COMPANY	3634921	PA-1	835-000256	12501 E AVENUE H	LANCASTER	93535	May, 1997	05/14/97	PA-1	\$459.68	3,456	\$21.86	\$0.69	31.4	28
BAXTER MUTUAL WATER COMPANY	3634921	PA-1	835-000256	12501 E AVENUE H	LANCASTER	93535	June, 1997	06/13/97	PA-1	\$638.02	5,304	\$30.33	\$1.06	30.2	30
BAXTER MUTUAL WATER COMPANY	3634921	PA-1	835-000256	12501 E AVENUE H	LANCASTER	93535	July, 1997	07/16/97	PA-1	\$751.53	6,480	\$35.73	\$1.30	31.7	33
BAXTER MUTUAL WATER COMPANY	3634921	PA-1	835-000256	12501 E AVENUE H	LANCASTER	93535	August, 1997	08/13/97	PA-1	\$700.56	5,952	\$33.30	\$1.19	31.9	28
BAXTER MUTUAL WATER COMPANY	3634921	PA-1	835-000256	12501 E AVENUE H	LANCASTER	93535	September, 1997	09/15/97	PA-1	\$739.93	6,360	\$35.17	\$1.27	31.7	33
BAXTER MUTUAL WATER COMPANY	3634921	PA-1	835-000256	12501 E AVENUE H	LANCASTER	93535	October, 1997	10/15/97	PA-1	\$452.74	3,384	\$21.53	\$0.68	31.7	30
BAXTER MUTUAL WATER COMPANY	3634921	PA-1	835-000256	12501 E AVENUE H	LANCASTER	93535	November, 1997	11/14/97	PA-1	\$343.87	2,256	\$16.35	\$0.45	28.6	30
BAXTER MUTUAL WATER COMPANY	3634921	PA-1	835-000256	12501 E AVENUE H	LANCASTER	93535	December, 1997	12/16/97	PA-1	\$228.07	1,056	\$10.85	\$0.21	27.6	32
BAXTER MUTUAL WATER COMPANY	3634921	PA-1	835-000256	12501 E AVENUE H	LANCASTER	93535	January, 1998	01/16/98	PA-1	\$207.22	840	\$9.86	\$0.17	21.8	31
BAXTER MUTUAL WATER COMPANY	3634921	PA-1	835-000256	12501 E AVENUE H	LANCASTER	93535	February, 1998	02/17/98	PA-1	\$197.96	744	\$9.42	\$0.15	24.0	32
BAXTER MUTUAL WATER COMPANY	3634921	PA-1	835-000256	12501 E AVENUE H	LANCASTER	93535	May, 1998	05/15/98	PA-1	\$423.20	1,080	\$20.14	\$0.22	28.8	87
BAXTER MUTUAL WATER COMPANY	3634921	PA-1	835-000256	12501 E AVENUE H	LANCASTER	93535	June, 1998	06/16/98	PA-1	\$191.01	672	\$9.09	\$0.13	25.0	32
BAXTER MUTUAL WATER COMPANY	3634921	PA-1	835-000256	12501 E AVENUE H	LANCASTER	93535	July, 1998	07/17/98	PA-1	\$939.12	8,424	\$44.64	\$1.68	32.2	31
BAXTER MUTUAL WATER COMPANY	3634921	PA-1	835-000256	12501 E AVENUE H	LANCASTER	93535	August, 1998	08/14/98	PA-1	\$746.88	6,432	\$35.50	\$1.29	32.6	28
BAXTER MUTUAL WATER COMPANY	3634921	PA-1	835-000256	12501 E AVENUE H	LANCASTER	93535	September, 1998	09/15/98	PA-1	\$651.92	5,448	\$30.99	\$1.09	32.4	32
BAXTER MUTUAL WATER COMPANY	3634921	PA-1	835-000256	12501 E AVENUE H	LANCASTER	93535	October, 1998	10/15/98	PA-1	\$450.42	3,360	\$21.42	\$0.67	32.9	30
BAXTER MUTUAL WATER COMPANY	3634921	PA-1	835-000256	12501 E AVENUE H	LANCASTER	93535	November, 1998	11/17/98	PA-1	\$378.61	2,616	\$18.00	\$0.52	29.5	33
BAXTER MUTUAL WATER COMPANY	3634921	PA-1	835-000256	12501 E AVENUE H	LANCASTER	93535	December, 1998	12/17/98	PA-1	\$261.83	1,488	\$12.45	\$0.30	27.8	30
BAXTER MUTUAL WATER COMPANY	3634921	PA-1	835-000256	12501 E AVENUE H	LANCASTER	93535	January, 1999	01/18/99	PA-1	\$255.86	1,344	\$12.17	\$0.27	27.8	32
BAXTER MUTUAL WATER COMPANY	3634921	PA-1	835-000256	12501 E AVENUE H	LANCASTER	93535	February, 1999	02/22/99	PA-1	\$249.09	1,056	\$11.85	\$0.21	27.8	35
BAXTER MUTUAL WATER COMPANY	3634921	PA-1	835-000256	12501 E AVENUE H	LANCASTER	93535	March, 1999	03/23/99	PA-1	\$246.60	1,248	\$11.73	\$0.25	27.8	29
BAXTER MUTUAL WATER COMPANY	3634921	PA-1	835-000256	12501 E AVENUE H	LANCASTER	93535	April, 1999	04/16/99	PA-1	\$177.36	792	\$8.44	\$0.16	28.3	24
BAXTER MUTUAL WATER COMPANY	3634921	PA-1	835-000256	12501 E AVENUE H	LANCASTER	93535	May, 1999	05/18/99	PA-1	\$406.41	2,904	\$19.33	\$0.58	29.5	32
BAXTER MUTUAL WATER COMPANY	3634921	PA-1	835-000256	12501 E AVENUE H	LANCASTER	93535	June, 1999	06/18/99	PA-1	\$258.17	1,368	\$12.28	\$0.27	28.8	31
BAXTER MUTUAL WATER COMPANY	3634921	PA-1	835-000256	12501 E AVENUE H	LANCASTER	93535	July, 1999	07/19/99	PA-1	\$221.12	984	\$10.52	\$0.20	28.8	31
BAXTER MUTUAL WATER COMPANY	3634921	PA-1	835-000256	12501 E AVENUE H	LANCASTER	93535	September, 1999	09/16/99	PA-1	\$347.71	1,032	\$16.55	\$0.21	32.9	59
BAXTER MUTUAL WATER COMPANY	3634921	PA-1	835-000256	12501 E AVENUE H	LANCASTER	93535	October, 1999	10/21/99	PA-1	\$156.45	96	\$7.45	\$0.02	29.8	35
BAXTER MUTUAL WATER COMPANY	3634921	PA-1	835-000256	12501 E AVENUE H	LANCASTER	93535	November, 1999	11/17/99	PA-1	\$2,558.10	25,200	\$121.57	\$5.04	28.8	27
BAXTER MUTUAL WATER COMPANY	3634921	PA-1	835-000256	12501 E AVENUE H	LANCASTER	93535	December, 1999	12/16/99	PA-1	\$244.28	1,224	\$11.62	\$0.24	28.8	29
BAXTER MUTUAL WATER COMPANY	3634921	PA-1	835-000256	12501 E AVENUE H	LANCASTER	93535	January, 2000	01/17/00	PA-1	\$244.28	1,224	\$11.62	\$0.24	28.3	32
BAXTER MUTUAL WATER COMPANY	3634921	PA-1	835-000256	12501 E AVENUE H	LANCASTER	93535	February, 2000	02/16/00	PA-1	\$241.96	1,200	\$11.51	\$0.24	28.8	30
BAXTER MUTUAL WATER COMPANY	3634921	PA-1	835-000256	12501 E AVENUE H	LANCASTER	93535	April, 2000	04/14/00	PA-1	\$535.73	3,024	\$25.48	\$0.60	29.5	58
BAXTER MUTUAL WATER COMPANY	3634921	PA-1	835-000256	12501 E AVENUE H	LANCASTER	93535	May, 2000	05/15/00	PA-1	\$227.45	1,224	\$10.82	\$0.24	29.5	31
BAXTER MUTUAL WATER COMPANY	3634921	PA-1	835-000256	12501 E AVENUE H	LANCASTER	93535	June, 2000	06/15/00	PA-1	\$244.28	1,224	\$11.62	\$0.24	0.0	31
BAXTER MUTUAL WATER COMPANY	3634921	PA-1	835-000256	12501 E AVENUE H	LANCASTER	93535	August, 2000	08/15/00	PA-1	\$2,378.11	21,984	\$113.03	\$4.40	32.4	61
BAXTER MUTUAL WATER COMPANY	3634921	PA-1	835-000256	12501 E AVENUE H	LANCASTER	93535	September, 2000	09/14/00	PA-1	\$686.66	5,808	\$32.64	\$1.16	33.1	30
BAXTER MUTUAL WATER COMPANY	3634921	PA-1	835-000256	12501 E AVENUE H	LANCASTER	93535	October, 2000	10/16/00	PA-1	\$682.03	5,760	\$32.42	\$1.15	32.2	32



Baxter Mutual Water Company  
Electrical Billing History

BAXTER MUTUAL WATER COMPANY	3634921	PA-1	835-000256	12501 E AVENUE H	LANCASTER	93535	January, 2001	01/17/01	PA-1	\$757.91	3,744	\$36.06	\$0.75	32.6	93
BAXTER MUTUAL WATER COMPANY	3634921	PA-1	835-000256	12501 E AVENUE H	LANCASTER	93535	February, 2001	02/15/01	PA-1	\$272.54	1,368	\$12.97	\$0.27	32.6	29
BAXTER MUTUAL WATER COMPANY	3634921	PA-1	835-000256	12501 E AVENUE H	LANCASTER	93535	March, 2001	03/19/01	PA-1	\$287.95	1,512	\$13.70	\$0.30	32.6	32
BAXTER MUTUAL WATER COMPANY	3634921	PA-1	835-000256	12501 E AVENUE H	LANCASTER	93535	April, 2001	04/17/01	PA-1	\$267.60	1,392	\$12.73	\$0.28	32.6	29
BAXTER MUTUAL WATER COMPANY	3634921	PA-1	835-000256	12501 E AVENUE H	LANCASTER	93535	May, 2001	05/16/01	PA-1	\$272.54	1,368	\$12.97	\$0.27	32.6	29
BAXTER MUTUAL WATER COMPANY	3634921	PA-1	835-000256	12501 E AVENUE H	LANCASTER	93535	June, 2001	06/14/01	PA-1	\$651.79	4,560	\$30.99	\$0.91	32.9	29
BAXTER MUTUAL WATER COMPANY	3634921	PA-1	835-000256	12501 E AVENUE H	LANCASTER	93535	July, 2001	07/16/01	PA-1	\$788.01	6,576	\$46.28	\$1.32	34.3	32
BAXTER MUTUAL WATER COMPANY	3634921	PA-1	835-000256	12501 E AVENUE H	LANCASTER	93535	August, 2001	08/14/01	PA-1	\$880.62	7,464	\$51.71	\$1.49	32.4	29
BAXTER MUTUAL WATER COMPANY	3634921	PA-1	835-000256	12501 E AVENUE H	LANCASTER	93535	September, 2001	09/14/01	PA-1	\$864.92	5,736	\$41.13	\$1.15	8.6	31
BAXTER MUTUAL WATER COMPANY	3634921	PA-1	835-000256	12501 E AVENUE H	LANCASTER	93535	October, 2001	10/16/01	PA-1	\$920.55	6,168	\$43.78	\$1.23	42.0	32
BAXTER MUTUAL WATER COMPANY	3634921	PA-1	835-000256	12501 E AVENUE H	LANCASTER	93535	November, 2001	11/15/01	PA-1	\$348.72	1,728	\$16.59	\$0.35	35.3	30
BAXTER MUTUAL WATER COMPANY	3634921	PA-1	835-000256	12501 E AVENUE H	LANCASTER	93535	December, 2001	12/14/01	PA-1	\$138.53	96	\$6.60	\$0.02	32.6	29
BAXTER MUTUAL WATER COMPANY	3634921	PA-1	835-000256	12501 E AVENUE H	LANCASTER	93535	January, 2002	01/16/02	PA-1	\$289.98	1,272	\$13.80	\$0.25	33.1	33
BAXTER MUTUAL WATER COMPANY	3634921	PA-1	835-000256	12501 E AVENUE H	LANCASTER	93535	February, 2002	02/14/02	PA-1	\$274.53	1,152	\$13.06	\$0.23	33.1	29
BAXTER MUTUAL WATER COMPANY	3634921	PA-1	835-000256	12501 E AVENUE H	LANCASTER	93535	March, 2002	03/19/02	PA-1	\$240.53	888	\$11.45	\$0.18	3.8	33
BAXTER MUTUAL WATER COMPANY	3634921	PA-1	835-000256	12501 E AVENUE H	LANCASTER	93535	April, 2002	04/16/02	PA-1	\$589.68	3,648	\$28.05	\$0.73	28.3	28
BAXTER MUTUAL WATER COMPANY	3634921	PA-1	835-000256	12501 E AVENUE H	LANCASTER	93535	May, 2002	05/16/02	PA-1	\$762.91	4,944	\$36.28	\$0.99	32.2	30
BAXTER MUTUAL WATER COMPANY	3634921	PA-1	835-000256	12501 E AVENUE H	LANCASTER	93535	June, 2002	06/17/02	PA-1	\$744.37	4,800	\$35.40	\$0.96	29.8	32
BAXTER MUTUAL WATER COMPANY	3634921	PA-1	835-000256	12501 E AVENUE H	LANCASTER	93535	July, 2002	07/16/02	PA-1	\$892.73	5,952	\$42.45	\$1.19	0.0	29
BAXTER MUTUAL WATER COMPANY	3634921	PA-1	835-000256	12501 E AVENUE H	LANCASTER	93535	August, 2002	08/14/02	PA-1	\$605.27	3,720	\$28.79	\$0.74	10.3	29
BAXTER MUTUAL WATER COMPANY	3634921	PA-1	835-000256	12501 E AVENUE H	LANCASTER	93535	September, 2002	09/16/02	PA-1	\$911.65	6,096	\$43.35	\$1.22	0.0	33
BAXTER MUTUAL WATER COMPANY	3634921	PA-1	835-000256	12501 E AVENUE H	LANCASTER	93535	October, 2002	10/16/02	PA-1	\$871.89	5,784	\$41.46	\$1.16	0.0	30
BAXTER MUTUAL WATER COMPANY	3634921	PA-1	835-000256	12501 E AVENUE H	LANCASTER	93535	November, 2002	11/18/02	PA-1	\$163.29	288	\$7.77	\$0.06	32.4	33
BAXTER MUTUAL WATER COMPANY	3634921	PA-1	835-000256	12501 E AVENUE H	LANCASTER	93535	December, 2002	12/16/02	PA-1	\$147.82	168	\$7.04	\$0.03	0.0	28
BAXTER MUTUAL WATER COMPANY	3634921	PA-1	835-000256	12501 E AVENUE H	LANCASTER	93535	January, 2003	01/16/03	PA-1	\$534.61	3,168	\$25.43	\$0.63	8.2	31
BAXTER MUTUAL WATER COMPANY	3634921	PA-1	835-000256	12501 E AVENUE H	LANCASTER	93535	February, 2003	02/18/03	PA-1	\$562.46	3,384	\$26.75	\$0.68	10.3	33
BAXTER MUTUAL WATER COMPANY	3634921	PA-1	835-000256	12501 E AVENUE H	LANCASTER	93535	March, 2003	03/19/03	PA-1	\$389.17	2,040	\$18.51	\$0.41	0.0	29
BAXTER MUTUAL WATER COMPANY	3634921	PA-1	835-000256	12501 E AVENUE H	LANCASTER	93535	April, 2003	04/21/03	PA-1	\$635.03	4,008	\$30.20	\$0.80	10.3	33
BAXTER MUTUAL WATER COMPANY	3634921	PA-1	835-000256	12501 E AVENUE H	LANCASTER	93535	May, 2003	05/16/03	PA-1	\$621.89	4,008	\$29.58	\$0.80	10.3	25
BAXTER MUTUAL WATER COMPANY	3634921	PA-1	835-000256	12501 E AVENUE H	LANCASTER	93535	June, 2003	06/17/03	PA-1	\$745.02	4,800	\$35.43	\$0.96	0.0	32
BAXTER MUTUAL WATER COMPANY	3634921	PA-1	835-000256	12501 E AVENUE H	LANCASTER	93535	July, 2003	07/16/03	PA-1	\$893.55	5,952	\$42.49	\$1.19	0.0	29
BAXTER MUTUAL WATER COMPANY	3634921	PA-1	835-000256	12501 E AVENUE H	LANCASTER	93535	August, 2003	08/14/03	PA-1	\$844.25	5,952	\$40.15	\$1.19	0.0	29
BAXTER MUTUAL WATER COMPANY	3634921	PA-1	835-000256	12501 E AVENUE H	LANCASTER	93535	September, 2003	09/15/03	PA-1	\$785.74	5,976	\$37.36	\$1.20	32.9	32
BAXTER MUTUAL WATER COMPANY	3634921	PA-1	835-000256	12501 E AVENUE H	LANCASTER	93535	October, 2003	10/16/03	PA-1	\$343.23	4,752	\$16.30	\$0.95	32.9	31
BAXTER MUTUAL WATER COMPANY	3634921	PA-1	835-000256	12501 E AVENUE H	LANCASTER	93535	November, 2003	11/17/03	PA-1	\$489.61	3,240	\$23.28	\$0.65	32.9	32
BAXTER MUTUAL WATER COMPANY	3634921	PA-1	835-000256	12501 E AVENUE H	LANCASTER	93535	December, 2003	12/17/03	PA-1	\$252.47	1,128	\$12.01	\$0.23	32.4	30
BAXTER MUTUAL WATER COMPANY	3634921	PA-1	835-000256	12501 E AVENUE H	LANCASTER	93535	January, 2004	01/19/04	PA-1	\$215.11	792	\$10.23	\$0.00	0.0	33
BAXTER MUTUAL WATER COMPANY	3634921	PA-1	835-000256	12501 E AVENUE H	LANCASTER	93535	February, 2004	02/18/04	PA-1	\$207.03	720	\$9.85	\$0.22	32.2	30
BAXTER MUTUAL WATER COMPANY	3634921	PA-1	835-000256	12501 E AVENUE H	LANCASTER	93535	March, 2004	03/17/04	PA-1	\$271.29	1,320	\$12.90	\$0.40	0.0	28
BAXTER MUTUAL WATER COMPANY	3634921	PA-1	835-000256	12501 E AVENUE H	LANCASTER	93535	April, 2004	04/16/04	PA-1	\$938.29	7,488	\$44.57	\$2.25	79.7	30
BAXTER MUTUAL WATER COMPANY	3634921	PA-1	835-000256	12501 E AVENUE H	LANCASTER	93535	May, 2004	05/17/04	PA-1	\$665.44	4,968	\$31.62	\$1.49	32.2	31
BAXTER MUTUAL WATER COMPANY	3634921	PA-1	835-000256	12501 E AVENUE H	LANCASTER	93535	June, 2004	06/16/04	PA-1	\$162.67	336	\$7.74	\$0.10	32.6	30
BAXTER MUTUAL WATER COMPANY	3634921	PA-1	835-000256	12501 E AVENUE H	LANCASTER	93535	July, 2004	07/16/04	PA-1	\$890.56	7,008	\$42.31	\$2.10	32.9	30
BAXTER MUTUAL WATER COMPANY	3634921	PA-1	835-000256	12501 E AVENUE H	LANCASTER	93535	August, 2004	08/16/04	PA-1	\$1,017.79	8,184	\$48.35	\$2.46	32.9	31
BAXTER MUTUAL WATER COMPANY	3634921	PA-1	835-000256	12501 E AVENUE H	LANCASTER	93535	September, 2004	09/15/04	PA-1	\$797.37	6,144	\$37.88	\$1.84	32.9	30
BAXTER MUTUAL WATER COMPANY	3634921	PA-1	835-000256	12501 E AVENUE H	LANCASTER	93535	October, 2004	10/18/04	PA-1	\$704.18	5,208	\$33.46	\$1.56	32.6	33
BAXTER MUTUAL WATER COMPANY	3634921	PA-1	835-000256	12501 E AVENUE H	LANCASTER	93535	November, 2004	11/16/04	PA-1	\$315.72	1,488	\$15.01	\$0.45	24.5	29
BAXTER MUTUAL WATER COMPANY	3634921	PA-1	835-000256	12501 E AVENUE H	LANCASTER	93535	December, 2004	12/16/04	PA-1	\$273.08	1,080	\$12.99	\$0.32	27.6	30
BAXTER MUTUAL WATER COMPANY	3634921	PA-1	835-000256	12501 E AVENUE H	LANCASTER	93535	January, 2005	01/18/05	PA-1	\$242.35	792	\$11.53	\$0.24	0.0	33
BAXTER MUTUAL WATER COMPANY	3634921	PA-1	835-000256	12501 E AVENUE H	LANCASTER	93535	February, 2005	02/16/05	PA-1	\$207.13	456	\$9.86	\$0.00	22.6	29

Baxter Mutual Water Company  
Electrical Billing History

BAXTER MUTUAL WATER COMPANY	3634921	PA-1	835-000256	12501 E AVENUE H	LANCASTER	93535	March, 2005	03/17/05	PA-1	\$257.44	936	\$12.25	\$0.21	25.0	29
BAXTER MUTUAL WATER COMPANY	3634921	PA-1	835-000256	12501 E AVENUE H	LANCASTER	93535	April, 2005	04/18/05	PA-1	\$564.14	3,840	\$26.82	\$0.84	0.0	32
BAXTER MUTUAL WATER COMPANY	3634921	PA-1	835-000256	12501 E AVENUE H	LANCASTER	93535	May, 2005	05/17/05	PA-1	\$178.70	528	\$8.50	\$0.12	31.7	29
BAXTER MUTUAL WATER COMPANY	3634921	PA-1	835-000256	12501 E AVENUE H	LANCASTER	93535	June, 2005	06/16/05	PA-1	\$615.62	4,080	\$29.27	\$0.90	32.2	30
BAXTER MUTUAL WATER COMPANY	3634921	PA-1	835-000256	12501 E AVENUE H	LANCASTER	93535	July, 2005	07/18/05	PA-1	\$725.51	4,992	\$34.50	\$1.10	32.4	32
BAXTER MUTUAL WATER COMPANY	3634921	PA-1	835-000256	12501 E AVENUE H	LANCASTER	93535	August, 2005	08/16/05	PA-1	\$735.60	5,040	\$34.98	\$1.11	32.4	29
BAXTER MUTUAL WATER COMPANY	3634921	PA-1	835-000256	12501 E AVENUE H	LANCASTER	93535	September, 2005	09/15/05	PA-1	\$639.76	4,272	\$30.42	\$0.94	31.7	30
BAXTER MUTUAL WATER COMPANY	3634921	PA-1	835-000256	12501 E AVENUE H	LANCASTER	93535	October, 2005	10/18/05	PA-1	\$32.61	3,360	\$25.05	\$0.74	31.0	33
BAXTER MUTUAL WATER COMPANY	3634921	PA-1	835-000256	12501 E AVENUE H	LANCASTER	93535	November, 2005	11/17/05	PA-1	\$284.94	1,392	\$13.55	\$0.31	28.8	30
BAXTER MUTUAL WATER COMPANY	3634921	PA-1	835-000256	12501 E AVENUE H	LANCASTER	93535	December, 2005	12/17/05	PA-1	\$225.92	912	\$10.75	\$0.20	23.0	30
BAXTER MUTUAL WATER COMPANY	3634921	PA-1	835-000256	12501 E AVENUE H	LANCASTER	93535	January, 2006	01/18/06	PA-1	\$242.83	1,008	\$11.55	\$0.22	27.8	32
BAXTER MUTUAL WATER COMPANY	3634921	PA-1	835-000256	12501 E AVENUE H	LANCASTER	93535	February, 2006	02/16/06	PA-1	\$232.96	864	\$11.08	\$0.19	27.8	29
BAXTER MUTUAL WATER COMPANY	3634921	PA-1	835-000256	12501 E AVENUE H	LANCASTER	93535	March, 2006	03/20/06	PA-1	\$243.93	888	\$11.61	\$0.20	27.1	32
BAXTER MUTUAL WATER COMPANY	3634921	PA-1	835-000256	12501 E AVENUE H	LANCASTER	93535	April, 2006	04/18/06	PA-1	\$281.65	1,128	\$13.40	\$0.25	25.2	29
BAXTER MUTUAL WATER COMPANY	3634921	PA-1	835-000256	12501 E AVENUE H	LANCASTER	93535	May, 2006	05/17/06	PA-1	\$523.55	2,640	\$24.90	\$0.58	29.5	29
BAXTER MUTUAL WATER COMPANY	3634921	PA-1	835-000256	12501 E AVENUE H	LANCASTER	93535	June, 2006	06/16/06	PA-1	\$733.22	3,960	\$34.87	\$0.87	31.4	30
BAXTER MUTUAL WATER COMPANY	3634921	PA-1	835-000256	12501 E AVENUE H	LANCASTER	93535	July, 2006	07/18/06	PA-1	\$1,060.55	6,024	\$50.44	\$1.33	31.9	32
BAXTER MUTUAL WATER COMPANY	3634921	PA-1	835-000256	12501 E AVENUE H	LANCASTER	93535	August, 2006	08/16/06	PA-1	\$909.53	5,040	\$43.26	\$1.11	31.9	29
BAXTER MUTUAL WATER COMPANY	3634921	PA-1	835-000256	12501 E AVENUE H	LANCASTER	93535	September, 2006	09/15/06	PA-1	\$928.13	5,136	\$44.14	\$1.13	31.7	30
BAXTER MUTUAL WATER COMPANY	3634921	PA-1	835-000256	12501 E AVENUE H	LANCASTER	93535	October, 2006	10/17/06	PA-1	\$819.78	4,464	\$38.99	\$0.98	31.7	32
BAXTER MUTUAL WATER COMPANY	3634921	PA-1	835-000256	12501 E AVENUE H	LANCASTER	93535	November, 2006	11/16/06	PA-1	\$472.32	2,280	\$22.47	\$0.50	31.7	30
BAXTER MUTUAL WATER COMPANY	3634921	PA-1	835-000256	12501 E AVENUE H	LANCASTER	93535	December, 2006	12/16/06	PA-1	\$313.93	1,272	\$14.94	\$0.28	31.7	30
BAXTER MUTUAL WATER COMPANY	3634921	PA-1	835-000256	12501 E AVENUE H	LANCASTER	93535	January, 2007	01/17/07	PA-1	\$274.52	1,032	\$13.06	\$0.23	27.6	32
BAXTER MUTUAL WATER COMPANY	3634921	PA-1	835-000256	12501 E AVENUE H	LANCASTER	93535	February, 2007	02/15/07	PA-1	\$305.74	1,248	\$14.55	\$0.27	26.9	29
BAXTER MUTUAL WATER COMPANY	3634921	PA-1	835-000256	12501 E AVENUE H	LANCASTER	93535	March, 2007	03/19/07	PA-1	\$412.06	1,944	\$19.60	\$0.43	31.4	32
BAXTER MUTUAL WATER COMPANY	3634921	PA-1	835-000256	12501 E AVENUE H	LANCASTER	93535	April, 2007	04/17/07	PA-1	\$619.32	3,384	\$29.46	\$0.74	31.7	29
BAXTER MUTUAL WATER COMPANY	3634921	PA-1	835-000256	12501 E AVENUE H	LANCASTER	93535	May, 2007	05/16/07	PA-1	\$595.93	3,216	\$28.34	\$0.71	31.9	29
BAXTER MUTUAL WATER COMPANY	3634921	PA-1	835-000256	12501 E AVENUE H	LANCASTER	93535	June, 2007	06/15/07	PA-1	\$799.15	4,632	\$38.01	\$1.02	31.9	30
BAXTER MUTUAL WATER COMPANY	3634921	PA-1	835-000256	12501 E AVENUE H	LANCASTER	93535	July, 2007	07/17/07	PA-1	\$1,142.33	7,056	\$54.32	\$1.55	32.4	32
BAXTER MUTUAL WATER COMPANY	3634921	PA-1	835-000256	12501 E AVENUE H	LANCASTER	93535	August, 2007	08/15/07	PA-1	\$1,000.81	6,048	\$47.59	\$1.33	32.6	29
BAXTER MUTUAL WATER COMPANY	3634921	PA-1	835-000256	12501 E AVENUE H	LANCASTER	93535	September, 2007	09/14/07	PA-1	\$973.42	5,856	\$46.29	\$1.29	32.4	30
BAXTER MUTUAL WATER COMPANY	3634921	PA-1	835-000256	12501 E AVENUE H	LANCASTER	93535	October, 2007	10/16/07	PA-1	\$673.57	3,768	\$32.04	\$0.83	31.9	32
BAXTER MUTUAL WATER COMPANY	3634921	PA-1	835-000256	12501 E AVENUE H	LANCASTER	93535	November, 2007	11/15/07	PA-1	\$554.38	2,952	\$26.37	\$0.65	32.2	30
BAXTER MUTUAL WATER COMPANY	3634921	PA-1	835-000256	12501 E AVENUE H	LANCASTER	93535	December, 2007	12/17/07	PA-1	\$336.07	1,416	\$15.99	\$0.31	27.4	32
BAXTER MUTUAL WATER COMPANY	3634921	PA-1	835-000256	12501 E AVENUE H	LANCASTER	93535	January, 2008	01/17/08	PA-1	\$245.83	792	\$11.70	\$0.17	23.0	31
BAXTER MUTUAL WATER COMPANY	3634921	PA-1	835-000256	12501 E AVENUE H	LANCASTER	93535	February, 2008	02/15/08	PA-1	\$235.10	720	\$11.19	\$0.16	24.5	29
BAXTER MUTUAL WATER COMPANY	3634921	PA-1	835-000256	12501 E AVENUE H	LANCASTER	93535	March, 2008	03/18/08	PA-1	\$344.12	1,488	\$16.37	\$0.33	28.3	32
BAXTER MUTUAL WATER COMPANY	3634921	PA-1	835-000256	12501 E AVENUE H	LANCASTER	93535	April, 2008	04/16/08	PA-1	\$497.15	2,520	\$23.65	\$0.55	31.7	29
BAXTER MUTUAL WATER COMPANY	3634921	PA-1	835-000256	12501 E AVENUE H	LANCASTER	93535	May, 2008	05/16/08	PA-1	\$700.58	3,864	\$33.32	\$0.85	31.7	30
BAXTER MUTUAL WATER COMPANY	3634921	PA-1	835-000256	12501 E AVENUE H	LANCASTER	93535	June, 2008	06/17/08	PA-1	\$1,008.21	5,976	\$47.95	\$1.31	32.2	32
BAXTER MUTUAL WATER COMPANY	3634921	PA-1	835-000256	12501 E AVENUE H	LANCASTER	93535	July, 2008	07/16/08	PA-1	\$1,079.36	6,456	\$51.33	\$1.42	31.9	29
BAXTER MUTUAL WATER COMPANY	3634921	PA-1	835-000256	12501 E AVENUE H	LANCASTER	93535	August, 2008	08/14/08	PA-1	\$1,023.32	6,072	\$48.67	\$1.34	32.4	29
BAXTER MUTUAL WATER COMPANY	3634921	PA-1	835-000256	12501 E AVENUE H	LANCASTER	93535	September, 2008	09/16/08	PA-1	\$1,124.62	6,792	\$53.48	\$1.49	32.4	33
BAXTER MUTUAL WATER COMPANY	3634921	PA-1	835-000256	12501 E AVENUE H	LANCASTER	93535	October, 2008	10/16/08	PA-1	\$772.46	4,368	\$36.74	\$0.96	32.2	30
BAXTER MUTUAL WATER COMPANY	3634921	PA-1	835-000256	12501 E AVENUE H	LANCASTER	93535	November, 2008	11/17/08	PA-1	\$608.31	3,216	\$28.93	\$0.71	31.9	32
BAXTER MUTUAL WATER COMPANY	3634921	PA-1	835-000256	12501 E AVENUE H	LANCASTER	93535	December, 2008	12/17/08	PA-1	\$406.69	1,824	\$19.35	\$0.40	31.7	30
BAXTER MUTUAL WATER COMPANY	3634921	PA-1	835-000256	12501 E AVENUE H	LANCASTER	93535	January, 2009	01/19/09	PA-1	\$287.72	984	\$13.69	\$0.22	28.6	33
BAXTER MUTUAL WATER COMPANY	3634921	PA-1	835-000256	12501 E AVENUE H	LANCASTER	93535	February, 2009	02/18/09	PA-1	\$250.22	720	\$11.91	\$0.16	27.8	30
BAXTER MUTUAL WATER COMPANY	3634921	PA-1	835-000256	12501 E AVENUE H	LANCASTER	93535	March, 2009	03/18/09	PA-1	\$297.20	1,056	\$13.22	\$0.23	28.1	28
BAXTER MUTUAL WATER COMPANY	3634921	PA-1	835-000256	12501 E AVENUE H	LANCASTER	93535	April, 2009	04/20/09	PA-1	\$503.62	2,520	\$21.66	\$0.55	32.2	33

Baxter Mutual Water Company  
Electrical Billing History

BAXTER MUTUAL WATER COMPANY	3634921	PA-1	835-000256	12501 E AVENUE H	LANCASTER	93535	May, 2009	05/19/09	PA-1	\$611.74	3,120	\$26.31	\$0.69	31.2	29
BAXTER MUTUAL WATER COMPANY	3634921	PA-1	835-000256	12501 E AVENUE H	LANCASTER	93535	June, 2009	06/17/09	PA-1	\$754.39	4,152	\$32.45	\$0.91	31.4	29
BAXTER MUTUAL WATER COMPANY	3634921	PA-1	835-000256	12501 E AVENUE H	LANCASTER	93535	July, 2009	07/20/09	PA-1	\$1,006.77	6,048	\$43.30	\$1.33	32.4	33
BAXTER MUTUAL WATER COMPANY	3634921	PA-1	835-000256	12501 E AVENUE H	LANCASTER	93535	August, 2009	08/18/09	PA-1	\$998.59	6,072	\$42.94	\$1.34	32.4	29
BAXTER MUTUAL WATER COMPANY	3634921	PA-1	835-000256	12501 E AVENUE H	LANCASTER	93535	September, 2009	09/17/09	PA-1	\$904.19	5,376	\$38.89	\$1.18	32.2	30
BAXTER MUTUAL WATER COMPANY	3634921	PA-1	835-000256	12501 E AVENUE H	LANCASTER	93535	October, 2009	10/19/09	PA-1	\$743.60	4,320	\$31.98	\$0.95	31.4	32
BAXTER MUTUAL WATER COMPANY	3634921	PA-1	835-000256	12501 E AVENUE H	LANCASTER	93535	November, 2009	11/18/09	PA-1	\$515.58	2,664	\$22.18	\$0.59	29.3	30
BAXTER MUTUAL WATER COMPANY	3634921	PA-1	835-000256	12501 E AVENUE H	LANCASTER	93535	December, 2009	12/17/09	PA-1	\$311.47	1,224	\$13.40	\$0.27	26.2	29
BAXTER MUTUAL WATER COMPANY	3634921	PA-1	835-000256	12501 E AVENUE H	LANCASTER	93535	January, 2010	01/19/10	PA-1	\$290.21	1,080	\$12.49	\$0.24	27.8	33
BAXTER MUTUAL WATER COMPANY	3634921	PA-1	835-000256	12501 E AVENUE H	LANCASTER	93535	February, 2010	02/17/10	PA-1	\$239.56	720	\$10.31	\$0.16	22.6	29
BAXTER MUTUAL WATER COMPANY	3634921	PA-1	835-000256	12501 E AVENUE H	LANCASTER	93535	March, 2010	03/18/10	PA-1	\$268.13	840	\$11.54	\$0.18	27.8	29
BAXTER MUTUAL WATER COMPANY	3634921	PA-1	835-000256	12501 E AVENUE H	LANCASTER	93535	April, 2010	04/19/10	PA-1	\$525.19	2,640	\$22.59	\$0.58	28.1	32
BAXTER MUTUAL WATER COMPANY	3634921	PA-1	835-000256	12501 E AVENUE H	LANCASTER	93535	May, 2010	05/17/10	PA-1	\$565.66	2,856	\$24.33	\$0.63	31.2	28
BAXTER MUTUAL WATER COMPANY	3634921	PA-1	835-000256	12501 E AVENUE H	LANCASTER	93535	June, 2010	06/16/10	PA-1	\$718.20	3,912	\$30.89	\$0.86	31.7	30
BAXTER MUTUAL WATER COMPANY	3634921	PA-1	835-000256	12501 E AVENUE H	LANCASTER	93535	July, 2010	07/19/10	PA-1	\$975.49	5,760	\$41.95	\$1.27	31.9	33
BAXTER MUTUAL WATER COMPANY	3634921	PA-1	835-000256	12501 E AVENUE H	LANCASTER	93535	August, 2010	08/17/10	PA-1	\$930.68	5,400	\$40.03	\$1.19	31.9	29
BAXTER MUTUAL WATER COMPANY	3634921	PA-1	835-000256	12501 E AVENUE H	LANCASTER	93535	September, 2010	09/15/10	PA-1	\$902.40	5,208	\$38.81	\$1.15	32.2	29
BAXTER MUTUAL WATER COMPANY	3634921	PA-1	835-000256	12501 E AVENUE H	LANCASTER	93535	October, 2010	10/18/10	PA-1	\$996.36	5,952	\$42.85	\$1.31	31.9	33
BAXTER MUTUAL WATER COMPANY	3634921	PA-1	835-000256	12501 E AVENUE H	LANCASTER	93535	November, 2010	11/17/10	PA-1	\$454.12	2,112	\$19.54	\$0.46	28.8	30
BAXTER MUTUAL WATER COMPANY	3634921	PA-1	835-000256	12501 E AVENUE H	LANCASTER	93535	December, 2010	12/17/10	PA-1	\$350.43	1,344	\$15.08	\$0.30	28.8	30
BAXTER MUTUAL WATER COMPANY	3634921	PA-1	835-000256	12501 E AVENUE H	LANCASTER	93535	January, 2011	01/17/11	PA-1	\$280.41	840	\$12.07	\$0.00	22.6	31
BAXTER MUTUAL WATER COMPANY	3634921	PA-1	835-000256	12501 E AVENUE H	LANCASTER	93535	February, 2011	02/15/11	PA-1	\$283.98	864	\$12.22	\$0.25	23.0	29
BAXTER MUTUAL WATER COMPANY	3634921	PA-1	835-000256	12501 E AVENUE H	LANCASTER	93535	March, 2011	03/17/11	PA-1	\$301.74	984	\$12.98	\$0.29	28.1	30
BAXTER MUTUAL WATER COMPANY	3634921	PA-1	835-000256	12501 E AVENUE H	LANCASTER	93535	April, 2011	04/18/11	PA-1	\$437.13	1,944	\$18.80	\$0.56	28.8	32
BAXTER MUTUAL WATER COMPANY	3634921	PA-1	835-000256	12501 E AVENUE H	LANCASTER	93535	May, 2011	05/16/11	PA-1	\$602.88	3,096	\$25.92	\$0.90	28.8	28
BAXTER MUTUAL WATER COMPANY	3634921	PA-1	835-000256	12501 E AVENUE H	LANCASTER	93535	June, 2011	06/15/11	PA-1	\$697.62	3,912	\$29.99	\$1.13	31.7	30
BAXTER MUTUAL WATER COMPANY	3634921	PA-1	835-000256	12501 E AVENUE H	LANCASTER	93535	July, 2011	07/15/11	PA-1	\$909.67	5,568	\$39.10	\$1.61	32.4	30
BAXTER MUTUAL WATER COMPANY	3634921	PA-1	835-000256	12501 E AVENUE H	LANCASTER	93535	August, 2011	08/16/11	PA-1	\$997.23	6,216	\$42.87	\$1.80	32.4	32
BAXTER MUTUAL WATER COMPANY	3634921	PA-1	835-000256	12501 E AVENUE H	LANCASTER	93535	September, 2011	09/15/11	PA-1	\$950.32	5,832	\$40.85	\$1.69	32.4	30
BAXTER MUTUAL WATER COMPANY	3634921	PA-1	835-000256	12501 E AVENUE H	LANCASTER	93535	October, 2011	10/18/11	PA-1	\$983.33	5,952	\$42.27	\$1.73	31.9	33
BAXTER MUTUAL WATER COMPANY	3634921	PA-1	835-000256	12501 E AVENUE H	LANCASTER	93535	November, 2011	11/17/11	PA-1	\$482.54	2,256	\$20.75	\$0.65	28.8	30
BAXTER MUTUAL WATER COMPANY	3634921	PA-1	835-000256	12501 E AVENUE H	LANCASTER	93535	December, 2011	12/16/11	PA-1	\$216.92	384	\$9.34	\$0.11	33.4	29

2



SOUTHERN CALIFORNIA  
**EDISON**  
An EDISON INTERNATIONAL Company

P.O. Box 300  
Rosemead, CA  
91772-0001  
www.sce.com

## Your electricity bill

BAXTER MUTUAL WATER COMPANY / Page 1 of 6

For billing and service inquiries call 1-800-896-1245,  
Mon - Fri 7 a.m. to 7 p.m. and Saturday 8 a.m. to 5 p.m.  
For emergency services call 24 hrs a day, 7 days a week

Date bill prepared: Jan 19 '12

Customer account 2-02-834-3267

Service account 3-003-6349-21  
12501 E AVENUE H PMP  
LANCASTER, CA 93535

Rotating outage Group A050

### Your account summary

Amount of your last bill	\$90.88
Past due amount	\$90.88
Your new charges	\$347.75
<b>Total amount you owe</b>	<b>\$438.63</b>

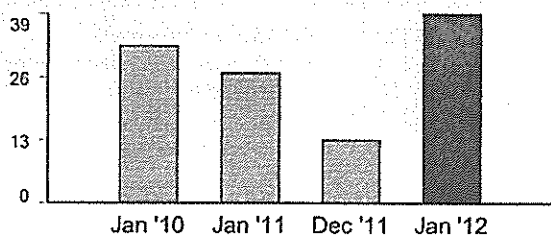
### Compare the electricity you are using

Your current read for meter 835-000256 - Jan 18 '12	22873
Your previous read - Dec 16 '11	- 22819
Difference	54
Multiplier	x 24.00
<b>Total electricity you used this month in kWh</b>	<b>1,296</b>

Your next meter read will be on or about Feb 16 '12.

Maximum demand is 27 kW

### Your daily average electricity usage (kWh)



**Your monthly usage may be higher than usual...**  
Based on your historical usage pattern, your monthly usage is trending higher than normal. As a result, you may notice an increase in your bill. If you would like information on tips and programs that can help you lower your energy usage and your bill, please visit [www.sce.com/billhelper](http://www.sce.com/billhelper).

(14-574)

Tear here

Please return the payment stub below with your payment and make your check payable to Southern California Edison.  
If you want to pay in person, call 1-800-747-8908 for locations, or you can pay online at [www.sce.com](http://www.sce.com).

Tear here



Customer account 2-02-834-3267  
Please write this number on your check. Make your  
check payable to Southern California Edison.

Past due charges - pay immediately	\$90.88
New charges - pay by Feb 7 '12	\$347.75
<b>Total amount you owe</b>	<b>\$438.63</b>

Amount enclosed \$

STMT 01192012 P1 C07 T0155 028743 01 AV 0.3370 H068  
BAXTER MUTUAL WATER COMPANY  
46200 125TH ST E  
LANCASTER, CA 93535-8728

P.O. BOX 300  
ROSEMEAD, CA 91772-0001

02 834 3267 00000028 000009088000034775000043863

### Usage comparison

	Jan '10	Jan '11	Feb '11	Mar '11	Apr '11	May '11	Jun '11	Jul '11	Aug '11	Sep '11	Oct '11	Nov '11	Dec '11	Jan '12
Total kWh used	1,080	840	864	984	1,944	3,096	3,912	5,568	6,216	5,832	5,952	2,256	384	1,296
Number of days	33	31	29	30	32	28	30	30	32	30	33	30	29	33
Appx. average kWh used/day	32	27	29	32	60	110	130	185	194	194	180	75	13	39

## Details of your new charges

Your rate: PA-1

Billing period: Dec 16 '11 to Jan 18 '12 (33 days)

### Delivery charges

Energy charge	628 kWh x \$0.03902	\$24.50
Energy charge	668 kWh x \$0.03881	\$25.93
DWR bond charge	628 kWh x \$0.00505	\$3.17
DWR bond charge	668 kWh x \$0.00513	\$3.43
Customer charge		\$44.41
Service charge	50 HP x \$2.22000 x 16/33 days	\$53.82
Service charge	50 HP x \$2.29000 x 17/33 days	\$58.98

### Your Delivery charges include:

- \$22.20 transmission charges
- \$163.34 distribution charges
- \$0.12 nuclear decommissioning charges
- \$18.63 public purpose programs charge
- \$3.05 new system generation charge

### Generation charges

DWR		
DWR energy credit	668 kWh x -\$0.00593	-\$3.96
Energy charge	60 kWh x \$0.03952	\$2.37
SCE		
Energy charge	1,236 kWh x \$0.09689	\$119.76

### Your Generation charges include:

- \$12.78 competition transition charge

### Your overall energy charges include:

- \$3.01 franchise fees

Subtotal of your new charges		\$332.41
Los Angeles Co UUT	\$332.41 x 4.50000%	\$14.96
State tax	1,296 kWh x \$0.00029	\$0.38
<b>Your new charges</b>		<b>\$347.75</b>

### Additional information:

- DWR provided 9.524% of the energy you used this month
- Service voltage: 480 volts
- Billing horsepower: 50.0 HP

## Things you should know

### Visit SCE at the World Ag Expo...

Find out about energy saving tips, rebates and programs by visiting SCE at the World Ag Expo, Feb. 14-16 in Tulare, CA. Customers who bring a recent copy of their bill to the SCE booth #1J25 will receive a free gift, while supplies last.

### You may notice a change in your billing statement.....

Effective 1/1/2012, the billing rates used to calculate your bill have been modified. You may notice the recurring line items in the "Details of New Charges" section which reflects the bill calculation before and after the rate change. The first line item reflects the rates prior to 1/1/2012 and the second line item reflects the rates after 1/1/2012. For more information, please visit [www.sce.com/bill\\_change](http://www.sce.com/bill_change).

### DEPARTMENT OF WATER RESOURCES CHANGES...

Due to changes in Department of Water Resources (DWR), you may receive DWR energy credits. The DWR energy credits and percent will appear on your December 2011 through January 2012 bill statement and will be displayed in the "Details of Your New Charges" section.



SOUTHERN CALIFORNIA  
**EDISON®**

An EDISON INTERNATIONAL® Company

**Confidential/Proprietary Information**

February 16, 2012

LARRY GORDON  
BAXTER MUTUAL WATER COMPANY  
46040 125TH ST. EAST  
LANCASTER, CA 93535

**PUMPING COST ANALYSIS, Plant: WELL**

Location: 12501 E AVE H HP: 20  
Cust #: 0-003-6069 Serv. Acct. #: 003-6349-21  
Meter: 835-256 Pump Ref. #: 2973

The following energy efficiency analysis is presented as an aid to your cost accounting. This is an estimate based on the conditions present during the Edison pump test performed on February 15, 2012, billing history for the past 12 months, and your current rate of PA-1.

	<u>Existing</u>
Total kWh	<b>28,920</b>
kW Input	<b>20.4</b>
kWh per Acre Foot	<b>644</b>
Acre Feet per Year	<b>44.9</b>
Average Cost per kWh	<b>\$0.19</b>
Average Cost per Acre Foot	<b>\$121.26</b>
<hr/>	
Total Annual Cost	<b>\$5,444.48</b>

It is sincerely hoped that this information will prove helpful to you, and that your concerns over maintaining optimum pumping efficiency will be continued. If you have any questions regarding this report, please contact RICK KOCH at (805)654-7312.

RUSS JOHNSON  
Manager  
Hydraulic Services



SOUTHERN CALIFORNIA  
**EDISON**<sup>®</sup>

An EDISON INTERNATIONAL<sup>®</sup> Company

**Confidential/Proprietary Information**

February 16, 2012

*Received  
2/21/2012  
JG*

LARRY GORDON  
BAXTER MUTUAL WATER COMPANY  
46040 125TH ST. EAST  
LANCASTER, CA 93535

**HYDRAULIC TEST RESULTS, Plant: WELL**

Location: 12501 E AVE H HP: 20  
Cust #: 0-003-6069 Serv. Acct. #: 003-6349-21  
Meter: 835-256 Pump Ref. #: 2973

In accordance with your request, an energy efficiency test was performed on your turbine well pump on February 15, 2012. If you have any questions regarding the results which follow, please contact RICK KOCH at (805)654-7312.

**Equipment**

Pump: FM No: PN2296  
Motor: FM No: F115302

**Results**

Discharge Pressure, PSI	10.5
Standing Water Level, Feet	288.8
Drawdown, Feet	
Discharge Head, Feet	24.3
Pumping Water Level, Feet	
Total Head, Feet	
Capacity, GPM	172
GPM per Foot Drawdown	
Acre Feet Pumped in 24 Hours	.760
kW Input to Motor	20.4
HP Input to Motor	27.4
Motor Load (%)	121.1
Measured Speed of Pump, RPM	1,766
Customer Meter, GPM	163
kWh per Acre Foot	644
Overall Plant Efficiency (%)	

Due to an obstruction in the well, we were unable to obtain a pumping water level; therefore, we were unable to quote the total head or overall efficiency of the pumping plant. The standing level was measured down through the pump column.

RUSS JOHNSON  
Manager  
Hydraulic Services



SOUTHERN CALIFORNIA  
**EDISON®**

An EDISON INTERNATIONAL® Company

**Confidential/Proprietary Information**

February 16, 2012

LARRY GORDON  
BAXTER MUTUAL WATER COMPANY  
46040 125TH ST. EAST  
LANCASTER, CA 93535

<b>PUMPING COST ANALYSIS,</b>	<b>BOOSTER #1</b>
Location: 12501 E AVE H	HP: 15
Cust #: 0-003-6069	Serv. Acct. #: 003-6349-21
Meter: 835-256	Pump Ref. #: 2974

The following energy efficiency analysis is presented as an aid to your cost accounting. This is an estimate based on the conditions present during the Edison pump test performed on February 15, 2012, billing history for the past 12 months, and your current rate of PA-1.

	<u>Existing</u>
Total kWh	9,384
kW Input	12.1
kWh per Acre Foot	209
Acre Feet per Year	45.0
Average Cost per kWh	\$0.19
Average Cost per Acre Foot	\$39.27
Overall Plant Efficiency (%)	58.7
<hr/>	<hr/>
Total Annual Cost	\$1,766.63

The hydraulic test results indicate that this pump is operating in an efficient manner.

It is sincerely hoped that this information will prove helpful to you, and that your concerns over maintaining optimum pumping efficiency will be continued. If you have any questions regarding this report, please contact RICK KOCH at (805)654-7312.

RUSS JOHNSON  
Manager  
Hydraulic Services





SOUTHERN CALIFORNIA  
**EDISON®**

An EDISON INTERNATIONAL® Company

**Confidential/Proprietary Information**

February 16, 2012

*Received  
2/21/2012  
JG*

LARRY GORDON  
BAXTER MUTUAL WATER COMPANY  
46040 125TH ST. EAST  
LANCASTER, CA 93535

**HYDRAULIC TEST RESULTS, Plant: BOOSTER #1**  
Location: 12501 E AVE H HP: 15  
Cust #: 0-003-6069 Serv. Acct. #: 003-6349-21  
Meter: 835-256 Pump Ref. #: 2974

In accordance with your request, an energy efficiency test was performed on your centrifugal booster pump on February 15, 2012. If you have any questions regarding the results which follow, please contact RICK KOCH at (805)654-7312.

<b>Equipment</b>		
Pump:	GOULD	No: 2114582
Motor:	BALDO	No: F491

**Results**

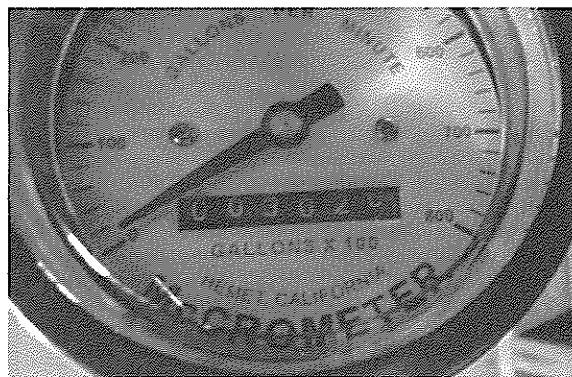
Discharge Pressure, PSI	55.3
Discharge Head, Feet	127.7
Suction Head or Lift, Feet	7.9
Total Head, Feet	119.8
Capacity, GPM	315
Acre Feet Pumped in 24 Hours	1.392
kW Input to Motor	12.1
HP Input to Motor	16.2
Motor Load (%)	92.5
Measured Speed of Pump, RPM	3,513
kWh per Acre Foot	209
Overall Plant Efficiency (%)	58.7

The test was performed at the midpoint of the pump's operating pressure range.

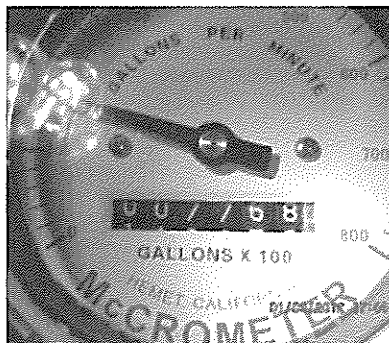
RUSS JOHNSON  
Manager  
Hydraulic Services

**Baxter Mutual Water Co.**  
**Edison and Flowmeter readings, Dec 2, 2011 through Jan 1, 2013**

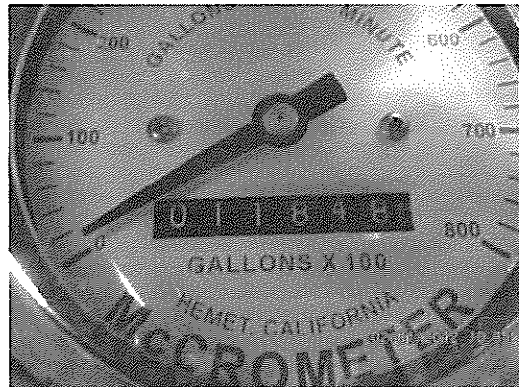
Dec 2, 2011



Jan 3, 2012



Feb 1, 2012



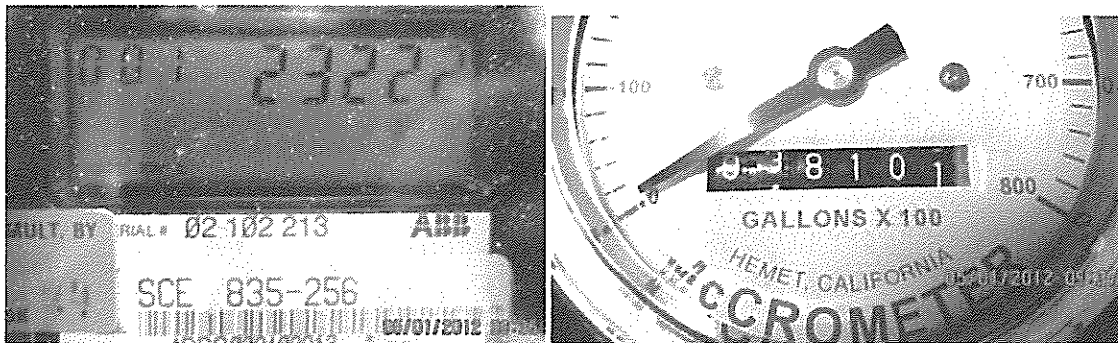
Mar 1, 2012



Apr 1, 2012



May 1, 2012



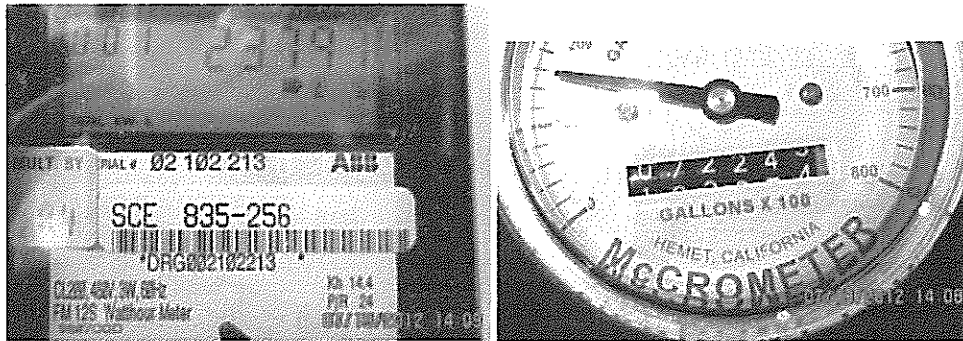
Jun 1, 2012



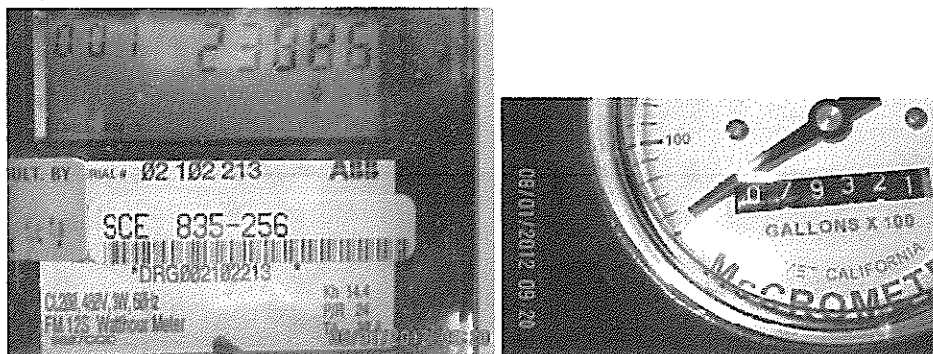
Jul 1, 2012



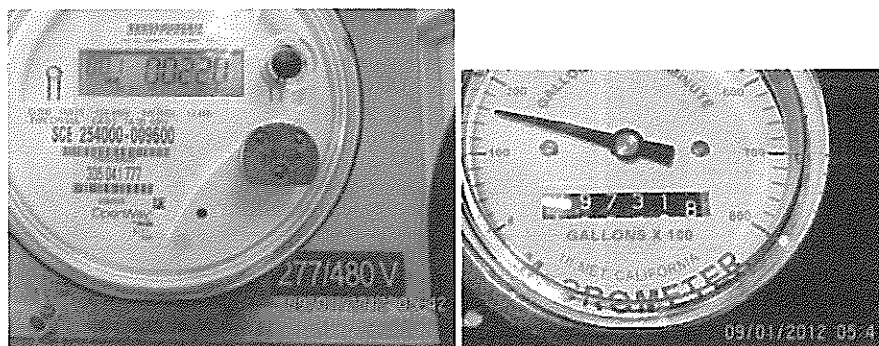
July 19, 2012



Aug 1, 2012

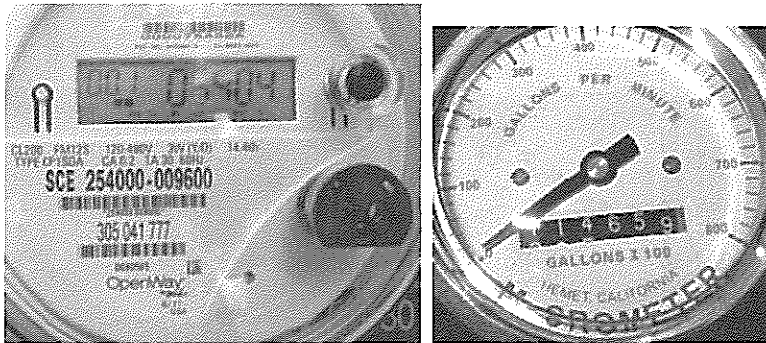


Sep 1, 2012 (new Edison meter installed Aug 30, 2012)

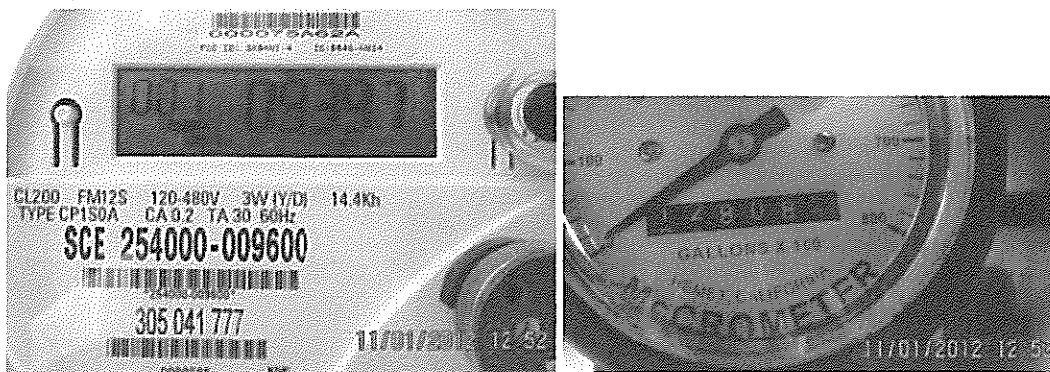




Oct 1, 2012



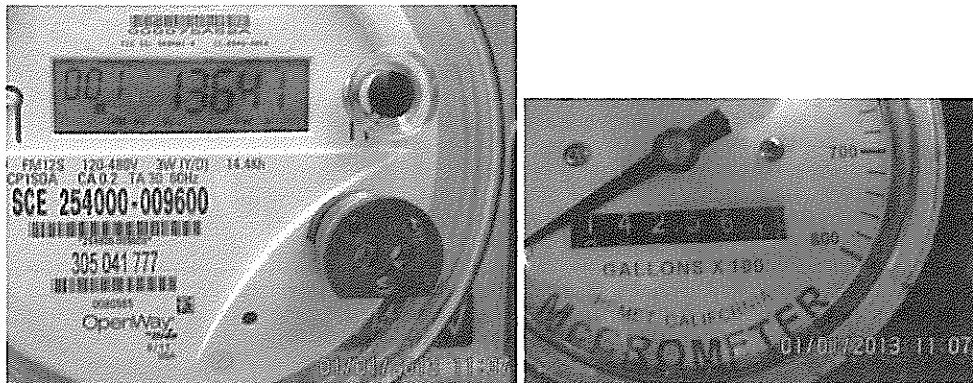
Nov 1, 2012



Dec 1, 2012



Jan 1, 2013



**BAXTER MUTUAL WATER COMPANY**  
Lancaster, California  
Incorporated September 20, 1954

**Well Water Extraction**

by Larry Gorden, Mathematician, Vice President Baxter Mutual Water Co.  
[larry@baxterwater.com](mailto:larry@baxterwater.com), 661-946-1646  
December 22, 2012

Well groundwater extraction (water pumped) for the years 2000 through 2004 plus 2011 and/or 2012 are required for Antelope Valley Water Adjudication. Baxter has one well.

**Groundwater Extraction in 2000, 2001, 2002, 2003, 2004, and 2011.**

Baxter groundwater extraction estimate for 2000-2004 and 2011 is based on Edison records of power consumed in KWH (kilowatt hours) and Edison pump efficiency test. The pump efficiency test gives us an estimate of pumping rate in KWH/Acre-Ft. The latest Edison pump efficiency test was conducted February 16, 2012. The most recent pump efficiency test prior to that was in 1993.

Two pumps are the only source of electricity usage on the Edison meter: (1) the well turbine pump delivers water from the aquifer to a holding tank, and (2) a pressure pump takes water from the holding tank and pressurizes a pressure tank. The Edison test gives us a rate in KWH/Acre-Ft for each pump. By adding rates of the two pumps we get an overall power rate for water extraction. That water rate is then applied to the total KWH power usage for each year.

Water pumping rates for the pumps are:

Well Pump	644 KWH/Acre-Ft
<u>Pressure Pump</u>	<u>209 KWH/ Acre-Ft</u>
Total	853 KWH/ Acre-Ft

We assume current pump KWH/Acre-Ft rate was the same in 2000-2004 and 2011. We consider this a good assumption since the previous measured well pump rate (in 1993) was 627 KWH/acre-ft.

For any period in which KWH electricity usage is available, water pumped can be computed by

$$\text{Water Pumped} = \frac{\text{KWH usage}}{853 \frac{\text{KWH}}{\text{Acre-Ft}}}$$

Using Edison electricity usage records with this calculation we get:

<i>Year</i>	<i>KWH in year</i>	<i>Acre Ft in year</i>
2000	43968	51.5
2001	39240	46.0
2002	40608	47.6
2003	46032	54.0
2004	44736	52.4
2011	38304	44.9



## Groundwater Extraction in 2012.

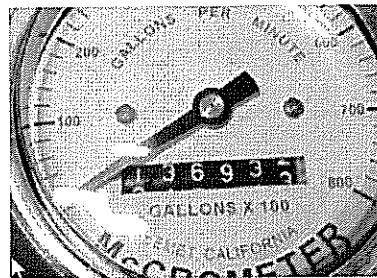
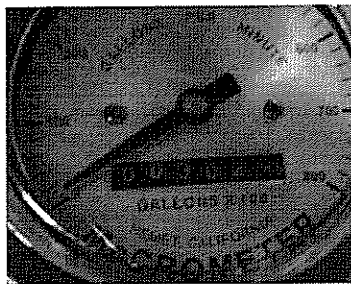
Baxter installed a water meter and began recording water usage November 15, 2011. To get the most accurate usage for 2012, we elect to use a one-year period in which we have records from the water meter -- December 1, 2011 through December 1, 2012.

Ideally, we would take the difference in flowmeter readings from Dec 1, 2011 and Dec 1, 2012 to get the volume of water pumped in the year. Flowmeter readings were:

Dec 1, 2011: 2886

Dec 1, 2012: 136933

These photos show the flowmeter readings on Dec 2, 2011 (Dec 1, 2011 photo not available) and Dec 1, 2012 respectively.



Flowmeter readings are in hundreds of gallons so we must multiply the difference by 100 to get gallons.

$$(136933 - 2886) \times 100 = 13406700 \text{ gal} = \mathbf{41.14 \text{ Acre-Ft.}}$$

However, we had a problem with the data for July because the flowmeter impeller stuck and the flowmeter stopped incrementing flow volume. That happened sometime between July 1 and July 18 (it was fixed July 19) but we don't know exactly when. So for the month of July we have an error in water production as indicated by the flowmeter. We need to get a good estimate of how much the error is and add it to the 41.14 Acre-Ft production computed above. For the month of July we use electricity usage (in KWH) to estimate water usage and compute the flowmeter error for the month.

Electric meter readings were recorded at the same time as flowmeter readings. That allows us to use other months for computing an average production/power rate in gallons pumped per KWH (gal/KWH). Applying that average to the month of July electricity usage gives us the needed production estimate for the month of July.

Average rate = 335.2 gal/KWH

July electricity usage = 6072 KWH

July Water Usage = 6072 KWH x 335.3 gal/KWH = 2035304.4 gal

Now we have a good estimate of actual water usage for July, 2035304.4 gal. Next we need to compute the July flowmeter error by subtracting the flowmeter indicated water usage for July from the actual water usage (above).

Flowmeter indicated water usage for July = 923600.0 gal

July flowmeter error = 2035304.4 - 923600.0 = 1111704.4 gal = **3.41 Acre-Ft.**

Finally, add the July flowmeter error to the one-year production volume indicated by the flowmeter (41.14 Acre-Ft as computed above).

$$41.14 + 3.41 = \mathbf{44.55 \text{ Acre-Ft.}} = \text{one-year production for Dec 2011 to Dec 2012.}$$

Note: lower one-year usage in 2011-2012 (than 2000-2004) is attributed to vacancies in shareholder properties served by the well. One property was vacant all year and two other properties were vacant for several months. Two properties are currently vacant.

A spreadsheet with readings and calculations is available on request. Photos of flowmeter and Edison power meter during the relevant period are available on request.

This is certified test report for meter accuracy.



## CERTIFIED TEST REPORT

CUSTOMER: MCCALLS METER SALES SERVICE  
MODEL NO: M0304  
METER SERIAL NO: 11-08644

### CONFIGURATION

METER INSIDE DIAMETER: 4  
METER OUTSIDE DIAMETER: 4.5  
TEST DATE: 10/31/2011  
TEST FACILITY: Volumetric  
IDEAL TEST CONSTANT: 1961

### CALIBRATION DATA

	Tested TC	GPM	Accuracy
1	1973	587	100.6

CERTIFIED BY: Paul Hobbs DATE: 11/2/2011

This calibration was performed on a gravimetric or volumetric test facility, traceable to the National Institute of Standards and Technology, USA. The estimated flow measurement uncertainty of the calibration facilities are:  
Gravimetric +/- 0.15% Volumetric +/- 0.5%



**McCROMETER**

3255 WEST STETSON AVENUE  
HEMET, CA 92545 USA  
PHONE (951) 652-6811 / FAX (951) 652-3078  
WEB SITE: <http://www.mccrometer.com> E-MAIL: [info@mccrometer.com](mailto:info@mccrometer.com)

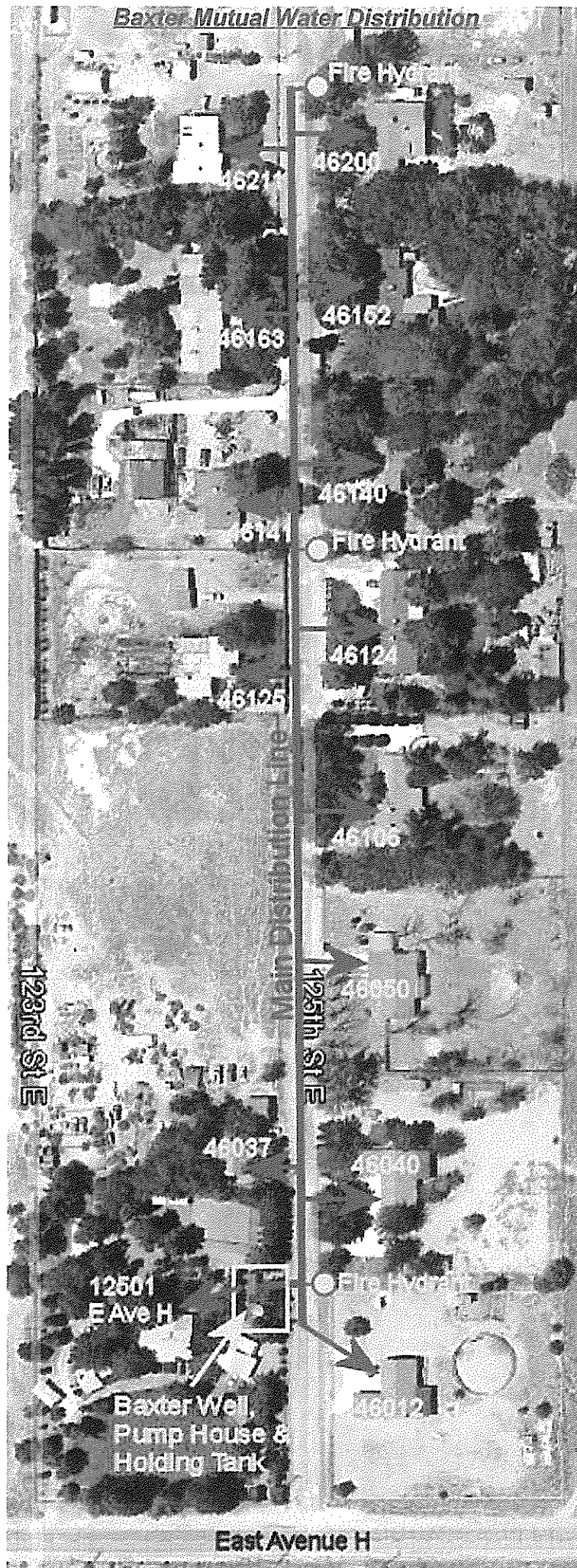


11-08644

11/2/2011 5:35:50 PM  
Version 1.2 (4/18/2007)

Baxter Mutual Water Distribution

8



**BAXTER MUTUAL WATER COMPANY**

**Attachment I.3.b.i.**

1  
2  
3  
4  
5  
6  
7  
8  
9  
10  
11  
12  
13  
14  
15  
16  
17  
18  
19  
20  
21  
22  
23  
24  
25  
26  
27

GRESHAM | SAVAGE  
ATTORNEYS AT LAW  
3750 UNIVERSITY AVE.  
STE. 250  
RIVERSIDE, CA 92501-3335  
(951) 684-2171

CROSS-DEFENDANT/CROSS-COMPLAINANT, ANTELOPE VALLEY UNITED MUTUAL GROUP, SPECIFICALLY  
BAXTER MUTUAL WATER COMPANY'S, FIRST SUPPLEMENTAL RESPONSE TO DECEMBER 12, 2012  
DISCOVERY ORDER FOR PHASE 4 TRIAL



**BAXTER MUTUAL WATER COMPANY**

**Attachment I.3.c.i.**

1  
2  
3  
4  
5  
6  
7  
8  
9  
10  
11  
12  
13  
14  
15  
16  
17  
18  
19  
20  
21  
22  
23  
24  
25  
26  
27

GRESHAM | SAVAGE  
ATTORNEYS AT LAW  
3750 UNIVERSITY AVE.  
STE. 250  
RIVERSIDE, CA 92501-3335  
(951) 684-2171

28

---

CROSS-DEFENDANT/CROSS-COMPLAINANT, ANTELOPE VALLEY UNITED MUTUAL GROUP, SPECIFICALLY  
BAXTER MUTUAL WATER COMPANY'S, FIRST SUPPLEMENTAL RESPONSE TO DECEMBER 12, 2012  
DISCOVERY ORDER FOR PHASE 4 TRIAL



5

# STATE OF CALIFORNIA



## DEPARTMENT OF STATE

*To all to whom these presents shall come, Greeting:*

*I, FRANK M. JORDAN, Secretary of State of the State of California, hereby certify:*

That the annexed transcript has been compared with the RECORD on file in my office, of which it purports to be a copy, and that the same is full, true and correct.

In testimony whereof, I, FRANK M. JORDAN, Secretary of State, have hereunto caused the Great Seal of the State of California to be affixed and my name subscribed, at the City of Sacramento, in the State of California,

this \_\_\_\_\_ SEP 20 1954

*Frank M. Jordan*  
Secretary of State

By \_\_\_\_\_

*Assistant Secretary of State*



ARTICLES OF INCORPORATION

OF

BAXTER MUTUAL WATER COMPANY

KNOW ALL MEN BY THESE PRESENTS: 291469

That we the undersigned have this day voluntarily associated ourselves together for the purpose of forming a corporation under the laws of the State of California, and we hereby certify:

I

That the name of said corporation shall be:

BAXTER MUTUAL WATER COMPANY

II

That the purposes for which this corporation is formed are  
as follows:

**THE PRIMARY BUSINESS**

(a) To acquire water by purchase, development or otherwise, to construct reservoirs or water towers, to dig wells, to erect pumping machinery, to lay water mains, pipes, gates, valves and hydrants, as well as to maintain all the above mentioned facilities; to develop, distribute, supply and deliver water for domestic and other uses to shareholders of the corporation at actual cost, plus necessary expenses.

**THE GENERAL PURPOSES**

(b) To have offices, conduct its business and promote its objects within and without the State of California, in all other states, the District of Columbia, and the territories and colonies of the United States, and in any and all foreign countries, without restriction as to place or amount.

(c) To acquire by purchase, subscription or otherwise, to sell, deal in, assign, transfer, pledge, hypothecate, or otherwise dispose of, and to hold as investment or otherwise, any bonds, or

**ENDORSED  
FILED**  
In the Office of the Secretary of State  
of the State of California  
SEP 20 1954

FRANK M. JORDAN, Secretary of State  
By C. OSCAR JOHNSON  
Deputy

other securities or evidence of indebtedness, or any shares of capital stock created or issued by this, or any other, corporation or corporations, and while the owner of such stock to exercise all the rights, powers and privileges of ownership, including the right to vote thereon; to aid any corporation of which the bonds or other securities or evidence of indebtedness or stock are held by this corporation.

(d) To borrow money with or without security.

(e) To lend money with or without security.

(f) To purchase, lease, or otherwise acquire, hold, maintain, improve and operate, to mortgage, lease, transfer or otherwise dispose of concessions, grants or other property, and to promote the construction and financing and subsidize companies; syndicates and others for the carrying on of any lawful business.

(g) To purchase or otherwise acquire, to hold, use and operate, to sell, assign, mortgage or otherwise dispose of patents, inventions, improvements and processes used in connection with, or secured under, letters patent or otherwise, of the United States or of any other country.

(h) To carry on in the State of California and elsewhere any and all kinds of business in which natural persons may engage and for the carrying on of which individuals may lawfully associate themselves.

(i) To incur legal obligations and as security for the payment or satisfaction thereof, or to carry out the purposes hereof, to issue evidence of indebtedness and to issue, sell and hypothecate, or convey in trust, any and all real and personal property, and to accept as security for and in satisfaction of the debts and obligations of others, any and all kinds of property or lien thereon or interest therein.

(j) In general, to carry on any other operations in connection with the foregoing, and to have and to exercise all the powers conferred by the laws of the State of California upon corporations formed under the act providing for the formation of such corporations, and to do any and all of the things hereinbefore set forth to the same extent as natural persons might or could do.

### III

That the county in this state where the principal office for the transaction of business of this corporation is to be located is the County of Los Angeles.

### IV

That this corporation is authorized to issue one class of shares of stock to be designated as common stock. The total number of shares which this corporation shall have authority to issue is twenty (20) and they shall have no par value. Said shares of stock shall be appurtenant to the certain lands which are described on the certificates issued therefor. This stock shall be assessable.

### V

That the number of Directors shall be three (3) and the names and addresses of the persons who are appointed to act until the first annual meeting of shareholders, or until the first election and qualification of their successors, are as follows:

HARRY C. BAXTER	Wilsona Route, Box 310, Lancaster, California
JOSEPH E. DOERR, JR.	Wilsona Route, Box 310, Lancaster, California
FRANCIS E. CARPENTER	44042 N. Gadsden Ave., Lancaster, California

### VI

That this corporation is formed as a mutual water company under California Civil Code, Section 330.24, and is not a public utility.

VII

IN WITNESS WHEREOF, for the purpose of forming this corporation, under the laws of the State of California, we, the undersigned, constituting the incorporators of this corporation, including the persons named hereinabove as the first Directors of this Corporation, have executed these Articles of Incorporation on this 14th day of September, 1954.

Harry C. Baxter  
Harry C. Baxter

Joseph E. Doerr, Jr.  
Joseph E. Doerr, Jr.

Francis E. Carpenter  
Francis E. Carpenter

STATE OF CALIFORNIA     )  
                                  )   SS  
COUNTY OF LOS ANGELES )

On this 14th day of September, 1954, before me a  
Notary Public in and for the County of Los Angeles, State of Calif-  
ornia, residing therein, duly commissioned and sworn, personally  
appeared HARRY C. BAXTER, JOSEPH E. DOERR, JR., AND  
FRANCIS E. CARPENTER, known to me to be the persons whose  
names are subscribed to the foregoing instrument, and they ack-  
nowledged to me that they executed the same.

WITNESS my hand and seal the day and year in this  
certificate first above written.

Henrietta M. Bradford (SEAL)  
Notary Public in and for said County and State.

My Commission Expires Sept. 4, 1955

BY-LAWS  
OF  
BAXTER MUTUAL WATER COMPANY  
A California Corporation

Article I  
OFFICES

Section 1. PRINCIPAL OFFICE. The principal office for the transaction of business of the corporation is hereby fixed and located at 44822 North Cedar Avenue, City of Lancaster, County of Los Angeles, State of California. The Board of Directors is hereby granted full power and authority to change said principal office from one location to another in said county.

Section 2. OTHER OFFICES. Branch or subordinate offices may at any time be established by the Board of Directors at any place or places where the corporation is qualified to do business.

## Article II MEETINGS OF STOCKHOLDERS

Section 1. PLACE OF MEETINGS. All annual meetings of shareholders shall be held at the principal office of the corporation, and all other meetings of shareholders shall be held either at the principal office or at any other place within or without the State of California which may be designated either by the Board of Directors pursuant to authority hereinafter granted to said board, or by written consent of all shareholders entitled to vote thereat, given either before or after the meeting and filed with the secretary of the corporation.

Section 2. ANNUAL MEETINGS. The annual meetings of shareholders shall be held on the third (3rd) Wednesday of October of each year, at 10:00 o'clock A. M.; provided, however, that should said day fall upon a legal holiday, then such annual meeting of shareholders shall be held at the same time and place on the next day thereafter ensuing which is not a legal holiday.

Written notice of each annual meeting shall be given to each shareholder entitled to vote thereat, either personally or by mail or other means of written communication, charges prepaid, addressed to such shareholder at his or her address appearing on the books of the corporation or given by him or her to the corporation for the purpose of notice. If a shareholder give no address, notice shall be deemed to have been given him or her if sent by mail or other means of written communication addressed to the place where the principal office of the corporation is situated, or if published at least once in some newspaper of general circulation in the county in which said office is located. All such notices shall be sent to such shareholder entitled thereto, not less

than ten (10) days before such annual meeting, and shall specify the place, day and hour of such meeting, and shall also state the general nature of the business or proposal to be considered or acted upon at such meeting before action may be taken at such meeting on:

(a) A proposal to sell, lease, convey, exchange, transfer of otherwise dispose of all or substantially all of the property or assets of the corporation except under Section 3900 of the California Corporation Code;

(b) A proposal to merge or consolidate with another corporation, domestic or foreign;

(c) A proposal to reduce the stated capital of the corporation;

(d) A proposal to amend the Articles of Incorporation, except to extend the term of the corporate existence;

(e) A proposal to wind up and dissolve the corporation;

(f) A proposal to adopt a plan of distribution of shares, securities or any consideration other than money in the process of winding up.

Section 3. SPECIAL MEETINGS: Special meetings of the shareholders, for any purpose or purposes whatsoever, may be called at any time by the president or by the Board of Directors, or by one or more shareholders holding not less than one-fifth (1/5th) of the voting power of the corporation. Except in special cases where other express provision is made by statute, notice of such special meetings shall be given in the same manner as for annual meetings of shareholders. Notices of any special meeting shall specify, in addition to the place, day and hour of such meeting, the general nature of the business to be transacted.

Section 4. ADJOURNED MEETINGS AND NOTICE THEREOF:



Any shareholders' meeting, annual or special, whether or not a quorum is present, may be adjourned from time to time by vote of fifty-five per cent (55%) of the shares, the holders of which are either present in person or by proxy thereat, but in the absence of a quorum, no other business may be transacted at any such meeting.

When any shareholders' meeting, either annual or special, is adjourned for thirty (30) days or more, notice of the adjourned meeting shall be given as in the case of an original meeting. Save as aforesaid, it shall not be necessary to give any notice of an adjournment or of the business to be transacted at an adjourned meeting, other than by announcement at the meeting at which such adjournment is taken.

Section 5. ENTRY OF NOTICE: Whenever any shareholder entitled to vote has been absent from any meeting of shareholders, whether annual or special, an entry in the minutes to the effect that notice has been duly given shall be sufficient evidence that due notice of such meeting was given to such shareholder, as required by law and the by-laws of the corporation.

Section 6. VOTING: At all meetings of shareholders, every shareholder entitled to vote shall have the right to vote in person or by proxy the number of shares standing in his or her name on the stock records of the corporation. Such vote may be given by viva voce or by ballot; provided, however, that for all purposes and matters upon which the shareholders shall be entitled to vote by law, it shall require at least fifty-five per cent (55%) of the shares of the issued and outstanding stock of the said corporation to vote affirmatively before any resolution may be passed. This provision shall not apply to the election of directors who shall be elected as is provided by the California

Corporation Code. That no action of the Board of Directors shall be taken unless the same is concurred in by a majority of the directors. At all elections of directors of the corporation, each shareholder shall be entitled to as many votes as shall equal the number of his or her shares of stock multiplied by the number of directors to be elected, and he or she may cast all of such votes for a single director or may distribute them as he or she may see fit.

Section 7. QUORUM: The presence in person or by proxy of the holders of a majority of the shares entitled to vote at any meeting shall constitute a quorum for the transaction of business. The shareholders present at a duly called or held meeting at which a quorum is present may continue to do business until adjournment, notwithstanding the withdrawal of enough shareholders to leave less than a quorum.

Section 8. CONSENT OF ABSENTEES: The proceedings and transactions of any meeting of shareholders, either annual or special, however called and noticed, shall be as valid as though had at a meeting duly held after regular call and notice, if a quorum be present either in person or by proxy, and if, either before or after the meeting, each of the shareholders entitled to vote, not present in person or by proxy, sign a written waiver of notice, or a consent to the holding of such meeting, or an approval of the minutes thereof. All such waivers, consents or approvals shall be filed with the corporate records or made a part of the minutes of the meeting.

Section 9. ACTION WITHOUT MEETING: Any action, which under the provisions of Section 2239 of the California Corporation Code may be taken at a meeting of the shareholders, may be taken without a

meeting if authorized by a writing signed by all of the holders of shares who would be entitled to vote at a meeting for such purpose, and filed with the secretary of the corporation.

Section 10. PROXIES: Every person entitled to vote or execute consents shall have the right to do so either in person or by an agent or agents authorized by a written proxy executed by such person or his or her duly authorized agent and filed with the secretary of the corporation; provided that no such proxy shall be valid after the expiration of eleven (11) months from the date of its execution, unless the shareholder executing it specifies therein the length of time for which such proxy is to continue in force, which in no case shall exceed seven (7) years from the date of its execution.

### Article III DIRECTORS

Section 1. POWERS: Subject to limitations of the Articles of Incorporation, of the By-Laws and particularly Article II, Section 6 of these By-Laws, and Section 800 of the California Corporation Code as to action to be authorized or approved by the shareholders, and subject to the duties of directors as prescribed by the By-Laws, all corporate power shall be exercised by or under the authority of, and the business and affairs of the corporation shall be controlled by, the Board of Directors. Without prejudice to such general powers, but subject to the same limitations, it is hereby expressly declared that the directors shall have the following powers, to wit:

First: To select and remove all other officers, agents and employees of the corporation, prescribe such powers and duties for them as may not be inconsistent with law, with the Articles of Incorporation or the By-Laws, fix their compensation, and require from them security for faithful service.

Second: To conduct, manage and control the affairs and business of the corporation, and to make such rules and regulations therefor not inconsistent with law, the Articles of Incorporation or the By-Laws, as they may deem best.

Third: To change the principal office for the transaction of the business of the corporation from one location to another within the same county as provided in Article I, Section 1, hereof; to fix and locate from time to time, one or more branch or subsidiary offices of the corporation within or without the State of California, as provided in Article I, Section 2 hereof; to designate any place within or without

the State of California for the holding of any shareholders' meetings except annual meetings; and to adopt, make and use a corporate seal, and to prescribe the form of certificates of stock, and to alter the form of such seal and of such stock certificates from time to time, as in their judgment they may deem best, provided such seal and such certificates shall at all times comply with the provisions of the law.

Fourth: To authorize the issuance of membership shares of stock of the corporation and to levy assessments against those shares of stock in amounts deemed sufficient to pay the necessary cost of operation of the corporation.

Fifth: To borrow money and incur indebtedness for the purposes of the corporation and to cause to be executed and delivered therefor, in the corporate name, promissory notes, bonds, debentures, deeds of trust, mortgages, pledges, hypothecations or other evidences of debt and securities therefor.

Sixth: To appoint an executive committee and other committees, and to delegate to the executive committee any of the powers and authority of the board in the management of the business and affairs of the corporation, except the power to declare dividends and to adopt, amend or repeal By-Laws. The executive committee shall be composed of two (2) or more directors.

Seventh: To distribute the cost of delivering water to stockholders by fixing from time to time, as in their judgment may seem proper, the rates and charges at and for which water shall be furnished and delivered to the stockholders of said corporation, but said rates and charges shall not, nor shall anything in these By-Laws be construed to impair or limit the right of the Board of Directors to levy assessments on the capital stock of this corporation.

Said rates and charges shall be fixed by equitably estimating and pro-rating the cost of delivering water to the stockholders of this corporation receiving such water. In estimating and ascertaining such cost and in fixing said rates and charges, the Board of Directors may, in their discretion, include items for depreciation and for repair and maintenance of machinery, pipes and pipe lines, storage tanks and whatever other property they shall deem depreciable. The Board of Directors may charge a flat fee to all non-users of water who are entitled to receive water, said fee being for the readiness to deliver water. All rates and charges shall be fixed in the manner required by law to preserve the private ownership of the water rights of this corporation and the delivery of its water as a mutual water company.

The Board of Directors shall have power to pass and enforce such rules and regulations, as in its judgment may seem proper, providing for the time and place of payment of said rates and charges and the basis upon which such rates and charges shall be fixed.

Eighth: In the event that at any time the available supply of water belonging to said corporation shall be insufficient to supply the demands of all the stockholders of said corporation entitled to the distribution and use of said water, the Board of Directors shall have the power to limit and control the quantity of water delivered to each stockholder so as to insure that each stockholder entitled thereto will receive his pro-rata share of the production of the corporation's facilities.

Section 2. NUMBER AND QUALIFICATIONS OF DIRECTORS:  
The authorized number of directors of the corporation shall be three (3) until changed by amendment of the Articles of Incorporation or by a By-Law amending this Article III, Section 2, of these By-Laws duly adopted

by the vote or written assents of the shareholders entitled to exercise fifty-five per cent (55%) of the voting power of the corporation.

Section 3. ELECTION AND TERM OF OFFICE: The directors shall be elected at each annual meeting of the shareholders, but if any such annual meeting is not held, or the directors are not elected thereat, the directors may be elected at any special meeting of the shareholders held for that purpose. All directors shall hold office at the pleasure of the shareholders or until their respective successors are elected. The shareholders may at any time, either at a regular or special meeting, remove any director and elect his or her successor.

Section 4. VACANCIES: Vacancies in the Board of Directors may be filled by the two (2) remaining directors, or by a sole remaining director, and each director so elected shall hold office until his or her successor is elected at an annual or special meeting of the shareholders.

A vacancy or vacancies in the Board of Directors shall be deemed to exist in case of the death, resignation or removal of any director, or if the authorized number of directors be increased, or if the shareholders fail at any annual or special meeting of shareholders at which any director or directors are elected, to elect the full authorized number of directors to be voted for at that meeting.

The shareholders may elect a director or directors at any time to fill any vacancy or vacancies not filled by the directors. If the Board of Directors accept the resignation of a director tendered to take effect at a future time, the board or the shareholders shall have power to elect a successor to take office when the resignation is to become effective.

Section 5. PLACE OF MEETING: Regular meetings of the Board of Directors shall be held at any place within or without the State

which has been designated from time to time by resolution of the board or by written consent of all members of the board. In the absence of such designation, regular meetings shall be held at the principal office of the corporation. Special meetings of the board may be held either at a place so designated or at the principal office.

Section 6. ORGANIZATION MEETING: Immediately following each annual meeting of shareholders, the Board of Directors shall hold a regular meeting for the purpose of organization, election of officers, and the transaction of other business. Notice of such meetings is hereby dispensed with.

Section 7. SPECIAL MEETINGS: Special meetings of the Board of Directors for any purpose or purposes shall be called at any time by the president, or, if he is absent or unable or refuses to act, by any vice-president, or, if he is absent or unable or refuses to act, by any director.

Written notice of the time and place of special meetings shall be delivered personally to the directors or sent to each director by mail or other form of written communication, charges prepaid, addressed to him or her at his or her address as it is shown upon the records of the corporation, or if it is not so shown on such records or is not readily ascertainable, at the place in which the meetings of the directors are regularly held. In case such notice is mailed or telegraphed, it shall be deposited in the U. S. mail or delivered to the telegraph company in the place in which the principal office of the corporation is located at least forty-eight (48) hours prior to the time of the holding of the meeting. In case such notice is delivered personally as above provided, it shall be so delivered at least forty-eight (48)



hours prior to the time of the holding of the meeting. Such mailing, telegraphing or delivery as above provided, shall be due, timely, legal and personal notice to such director.

Section 8. NOTICE OF ADJOURNMENT: Notice of the time and place of holding an adjourned meeting need not be given to absent directors if the time and place be fixed at the meeting adjourned.

Section 9. ENTRY OF NOTICE: Whenever any director has been absent from any special meeting of the Board of Directors, an entry in the minutes to the effect that notice has been duly given shall be sufficient evidence that due notice of such special meeting was given to such director, as required by law and the By-Laws of the corporation.

Section 10. WAIVER OF NOTICE: The transactions of any meeting of the Board of Directors, however called and noticed or wherever held, shall be as valid as though had at a meeting duly held after regular call and notice, if a quorum be present, and if, either before or after the meeting, each of the directors not present, sign a written waiver of notice or a consent to holding such meeting or an approval of the minutes thereof. All such waivers, consents or approvals shall be filed with the corporate records or made a part of the minutes of the meeting.

Section 11. QUORUM: A majority of the authorized number of directors shall be necessary to constitute a quorum for the transaction of business, except to adjourn as hereinafter provided. Every act or decision done or made by a majority of the directors present at a meeting duly held at which a quorum is present, shall be regarded as the act of the Board of Directors, unless a greater number be required by law, the Articles of Incorporation or the By-Laws.

Section 12. ADJOURNMENT: A quorum of the directors may adjourn any directors' meeting to meet again at a stated time, place and hour, provided, however, that in the absence of a quorum, the directors present at any directors' meeting, either regular or special, may adjourn from time to time, until the time fixed for the next regular meeting of the board.

Section 13. FEES AND COMPENSATION: Directors shall not receive any stated salary for their services as directors, but, by resolution of the board, a fixed fee, with or without expenses of attending, may be allowed for attendance at each meeting. Nothing herein contained shall be construed to preclude any director from serving the corporation in any other capacity as an officer, agent, employee, or otherwise, and receiving compensation therefor.

Article IV  
OFFICERS

Section 1. OFFICERS: The officers of the corporation shall be:

1. President
2. Vice - President
3. Secretary
4. Treasurer

Officers other than the president and chairman of the board, need not be directors. One (1) person may hold two (2) or more offices, except those of president and secretary.

Section 2. ELECTIONS: The officers of the corporation, except such officers as may be appointed in accordance with the provisions of Sections 3 or 5 of this Article, shall be chosen annually by the Board of Directors, and each shall hold his or her office at the pleasure of the Board of Directors, who may, either at a regular or special meeting, remove any such officer and appoint his or her successor.

Section 3. SUBORDINATE OFFICERS, ETC.: The Board of Directors may appoint such other officers as the business of the corporation may require, each of whom shall hold office for such period, have such authority and perform such duties as are provided in the By-Laws or as the Board of Directors may from time to time determine.

Section 4. REMOVAL AND RESIGNATION: Any officer may be removed, either with or without cause, by a majority of the directors at the time in office, at a regular or special meeting of the board, or, except in case of an officer chosen by the Board of Directors, by any officer upon whom such power of removal may be conferred by the Board of Directors.

Any officer may resign at any time by giving written notice to the Board of Directors or to the president, or to the secretary of the corporation. Any such resignation shall take effect at the date of the receipt of such notice or at any later time specified therein; and unless otherwise specified therein, the acceptance of such resignation shall not be necessary to make it effective.

Section 5. VACANCIES: A vacancy in any office because of death, resignation, removal, disqualification or any other cause shall be filled in the manner prescribed in the By-Laws for regular appointments to such office.

Section 6. CHAIRMAN OF THE BOARD: The Chairman of the Board shall be elected by a majority of the board members, and shall, when present, preside at all meetings of the Board of Directors and exercise and perform such other powers and duties as may be from time to time assigned to him or her by the Board of Directors, as prescribed by the By-Laws.

Section 7. PRESIDENT: Subject to such supervisory powers, if any, as may be given by the Board of Directors to the Chairman of the Board, if there be such an officer, the president shall be the chief executive officer of the corporation and shall, subject to the control of the Board of Directors, have general supervision, direction and control of the business and affairs of the corporation. He shall preside at all meetings of the shareholders, and in the absence of the chairman of the board, or if there be none, at all meetings of the Board of Directors. He shall be ex-officio a member of all the standing committees, including the executive committee, if any, and shall have the general powers and duties of management usually vested in the office of president of a

corporation, and shall have such other powers and duties as may be prescribed by the Board of Directors or the By-Laws.

Section 8. VICE-PRESIDENT: In the absence or disability of the president, the vice-president shall perform all the duties of the president, and when so acting shall have all the powers of, and be subject to all the restrictions upon, the president. The vice-president shall have such other powers and perform such other duties as from time to time may be prescribed for him or her by the Board of Directors or the By-Laws.

Section 9. SECRETARY: The secretary shall keep, or cause to be kept, a book of minutes at the principal office or such other place as the Board of Directors may order, of all meetings of directors and shareholders, with the time and place of holding, whether regular or special, and if special, how authorized, the notice thereof given, the names of those directors and shareholders present, the names of those present at the directors' meeting, the number of shares present or represented at shareholders' meetings and the proceedings thereof.

The secretary shall keep, or cause to be kept, at the principal office or at the office of the corporation's transfer agent, a share register, or a duplicate share register, showing the names of the shareholders and their addresses; the number and classes of shares held by each; the number and date of certificates issued for the same; the number and date of cancellation of every certificate surrendered for cancellation.

The secretary shall give or cause to be given, notice of all meetings of shareholders and the Board of Directors, as required by the By-Laws or by law to be given, and he or she shall keep the seal

of the corporation in safe custody, and shall have such other powers and perform such other duties as may be prescribed by the Board of Directors or the By-Laws.

Section 10. TREASURER: The treasurer shall keep and maintain, or cause to be kept and maintained, adequate and correct accounts of the properties and business transactions of the corporation, including accounts of its assets, liabilities, receipts, disbursements, gains, losses, capital, surplus and surplus shares and all records necessary for the levying of assessments. The treasurer shall keep records of water consumption as registered on all of the meters maintained by the shareholders. The books of account shall at all times be open for inspection by any director.

The treasurer shall deposit all moneys and other valuables in the name and to the credit of the corporation with such depositories as may be designated by the Board of Directors. He or she shall disburse the funds of the corporation as may be ordered by the Board of Directors and shall render to the president and directors, when they request it, an account of all of his or her transactions as treasurer and of the financial condition of the corporation, and shall have such other powers and perform such other duties as may be prescribed by the Board of Directors or the By-Laws.

Article V  
SHARES AND USE OF WATER

Section 1. SHARES OF STOCK: Shares of stock shall be issued to the owners of the land to which the shares are appurtenant on the basis of one share to an acre, fractional parts of acres less than one-half ( $1/2$ ) not being entitled to a share, and those fractional parts of an acre one-half ( $1/2$ ) or greater being entitled to a full share of stock. Shares are non-transferable other than by transfer of the land to which the shares are appurtenant and as provided in California Civil Code, Section 331(3).

All such stock certificates shall be signed by the president or vice-president and also by the secretary, or shall be authenticated by facsimile of the signature of the president and the written signature of the secretary.

Section 2. REPRESENTATION OF SHARES OF OTHER CORPORATIONS: The president or any vice-president and the secretary or assistant secretary of this corporation are authorized to vote, represent and exercise on behalf of this corporation all rights incident to any and all shares of any other corporation or corporations standing in the name of this corporation. The authority herein granted to said officers to vote or represent on behalf of this corporation any and all shares held by this corporation in any other corporation or corporations, may be exercised either by such officers in person or by any person authorized so to do by proxy or power of attorney duly executed by said officers.

Section 3. DISTRIBUTION OF WATER: The water developed, owned and controlled by the company shall be sold, distributed, supplied

or delivered to the owners of the shares of stock of this corporation under such rules and regulations and at such prices as the Board of Directors of this company may from time to time prescribe.

Each share of stock in the corporation shall entitle the owner thereof to his pro-rata share of the production of the corporation's facilities.

Any surplus water remaining after the wants of the shareholders have been supplied, may be disposed of by the Board of Directors on such terms as it may deem best, but such disposal shall only be temporary and shall not at any time interfere with the supplying of water to the Shareholders.

Section 4. ASSESSMENTS: The term "assessments" shall include the rates and charges mentioned in Article III, Section 1, paragraph Seventh. Assessments against stockholders may be levied by the president, within limits established by the Board of Directors and also whenever required by the Board of Directors under California Civil Code Section 331(3). Assessments shall be payable on the dates specified on each notice of assessment and a failure to so pay shall be considered a delinquency. The failure to pay an assessment on the due date shall render the shareholder liable for a penalty, the amount of which shall be determined by the Board of Directors, but which shall not exceed the amount of the assessment. In the event of non-payment of the assessment and penalty after expiration of two (2) weeks from the due date, the president of the corporation may refuse to supply water to such shareholder. When a shareholder is delinquent for six (6) months in a payment of an assessment, his share of stock in



the corporation may be declared forfeited to the corporation by the Board of Directors.

Section 5. REDEMPTION OF FORFEITED SHARES: Redemption of shares of stock as provided in Section 4, immediately above, shall be accomplished by payment of all delinquent assessments and penalties, as well as upon the meeting of the conditions which may be imposed by the Board of Directors.

Section 6. NON-DOMESTIC WATER USES: When a shareholder of the corporation makes any use of the water supplied by the corporation for other than domestic purposes, he shall be required to install a water meter, meeting the specifications of the Board of Directors for the measurement of his non-domestic water uses. The water thus used for non-domestic purposes shall be sold to the shareholder so using the water at a rate to be determined by the Board of Directors.

Non-Domestic uses of water shall include all agricultural and irrigational uses, as well as swimming pool uses and such others as the Board of Directors may from time to time determine to be non-domestic.

Section 7. ADDITIONS TO WATER PIPE SYSTEM: All extensions to the water pipe system of the corporation shall be made by the shareholder to be benefited thereby and at his expense. The corporation shall not assume responsibility for the cost of construction of additional pipe lines unless the Board of Directors shall so direct.

Article VI  
MISCELLANEOUS

Section 1. RECORD DATE AND CLOSING STOCK BOOKS:

The Board of Directors may fix a time, in the future, not exceeding fourteen (14) days preceding the date of any meeting of shareholders, and not exceeding fourteen (14) days preceding the date fixed for the payment of any dividend or distribution, or for the allotment of rights, or when any change or conversion or exchange of shares shall go into effect, as a record date for the determination of the shareholders entitled to notice of and to vote at any such meeting, or entitled to receive any such dividend or distribution, or any such allotment of rights, or to exercise the rights in respect to any such change, conversion or exchange of shares, and in such case only shareholders of record on the date so fixed shall be entitled to notice of and to vote at such meeting, or to receive such dividend, distribution or allotment of rights, or to exercise such rights, as the case may be, notwithstanding any transfer of any shares on the books of the corporation after any record date fixed as aforesaid. The Board of Directors may close the books of the corporation against transfers of shares during the whole, or any part of any such period.

Section 2. INSPECTION OF CORPORATE RECORDS: The share register or duplicate share register, the books of account, and minutes of proceedings of the shareholders and directors shall be open to inspection upon the written demand of any shareholder or the holder of a voting trust certificate, at any reasonable time, and for a purpose reasonably related to his or her interests as a shareholder, and shall be exhibited at any time when required by the demand of fifteen (15)

per cent of the shares represented at any shareholders' meeting. Such inspection may be made in person or by an agent or attorney, and shall include the right to make extracts. Demand of inspection other than at a shareholders' meeting shall be made in writing upon the president, secretary or assistant-secretary of the corporation.

Section 3. CHECKS, DRAFTS, ETC.: All checks, drafts or other orders for payment of money, notes or other evidences of indebtedness issued in the name of or payable to the corporation, shall be signed or endorsed by such person or persons and in such manner as, from time to time, shall be determined by resolution of the Board of Directors.

Section 4. ANNUAL REPORT: The Board of Directors of the corporation shall cause to be sent to the shareholders not later than forty-five (45) days after the close of the fiscal or calendar year an annual report.

Section 5. CONTRACTS, ETC.: HOW EXECUTED: The Board of Directors, except as the By-Laws or Articles of Incorporation otherwise provide, may authorize any officer or officers, agent or agents, to enter into any contract or execute any instrument in the name of and on behalf of the corporation, and such authority may be general or confined to specific instances; and unless so authorized by the Board of Directors, no officer, agent or employee shall have any power or authority to bind the corporation by any contract or agreement or to pledge its credit to render it liable for any purpose or to any amount.

Section 6. INSPECTION OF BY-LAWS: The corporation shall keep in its principal office for the transaction of business the

original or a copy of the By-Laws as amended or otherwise altered to date, certified by the secretary, which shall be open to inspection by the shareholders at all reasonable times during business hours.

Article VII  
AMENDMENTS

Section 1. POWER OF SHAREHOLDERS: New By-Laws may be adopted or these By-Laws may be amended or repealed by the vote of shareholders entitled to exercise sixty-five (65) per cent of the voting power of the corporation or by the written assent of such shareholders.

Section 2. POWER OF DIRECTORS: Subject to the right of shareholders as provided in Section 1 of this Article VII to adopt, amend or repeal By-Laws, By-Laws other than a By-Law or amendment thereof changing the authorized number of directors may be adopted, amended or repealed by the Board of Directors.

Article VIII  
SEAL

The corporation shall have a common seal consisting of two (2) concentric circles with the words and figures as follows:

BAXTER MUTUAL WATER COMPANY

Lancaster, California

Incorporated September 20, 1954

KNOW ALL MEN BY THESE PRESENTS:

That we, the undersigned, being all of the directors of the foregoing corporation, BAXTER MUTUAL WATER COMPANY, do hereby assent to the foregoing By-Laws and adopt the same as the By-Laws of this corporation.

IN WITNESS WHEREOF, we have hereunto subscribed our names this 5th day of November, 1954.

Harry C. Baxter  
Harry C. Baxter

Joseph E. Doerr, Jr.  
Joseph E. Doerr, Jr.

Francis E. Carpenter  
Francis E. Carpenter

KNOW ALL MEN BY THESE PRESENTS:

The undersigned, being the directors and secretary of the corporation known as BAXTER MUTUAL WATER COMPANY, do hereby certify that the above and foregoing By-Laws of said corporation were duly adopted as the By-Laws thereof on the 5th day of November, 1954, and that the same do now constitute the By-Laws of said corporation.

Harry C. Baxter  
Harry C. Baxter

Joseph E. Doerr, Jr.  
Joseph E. Doerr, Jr.

Francis E. Carpenter  
Francis E. Carpenter, Secretary

KNOW ALL MEN BY THESE PRESENTS:

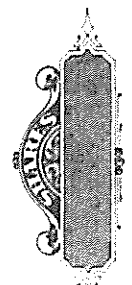
The undersigned, being all the holders of all of the stock of said corporation, BAXTER MUTUAL WATER COMPANY, do hereby assent to delegate and do hereby delegate to the Board of Directors of said corporation, the power and authority to adopt, repeal and amend the By-Laws of said corporation, except that said Board of Directors shall not have the power to adopt, repeal or amend By-Laws fixing the number of directors; and reserving however, to the shareholders of said corporation the power to adopt, amend or repeal such By-Laws or to revoke such delegation of authority as provided by Section 500 of the Corporation Code of the State of California.

Dated, California, *8th November*, 1954.

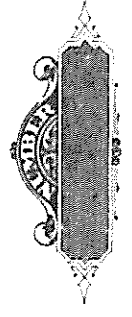
*Harry C. Baxter*  
\_\_\_\_\_  
Harry C. Baxter

*Joseph E. Doerr, Jr.*  
\_\_\_\_\_  
Joseph E. Doerr, Jr.





OF THE STATE OF CALIFORNIA



INCORPORATED UNDER THE LAWS

# BAXTER MUTUAL WATER COMPANY

CAPITAL STOCK 20 SHARES • NO PAR VALUE

THIS CERTIFIES THAT \_\_\_\_\_ is the record holder of \*\*\*\*\* Shares, being the shares represented hereby of no par value of the

## BAXTER MUTUAL WATER COMPANY

The shares represented hereby are assessable and shall be appurtenant to the following described land, situated in the County of Los Angeles, State of California, to-wit:

The west 20 acres of the south 100 acres of the southeast quarter of Section 2, Township 7 North, Range 10 West, San Bernardino Meridian, being more particularly described as follows:

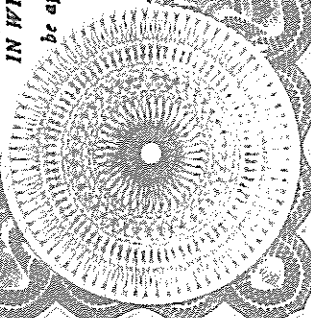
Beginning at the southwest corner of the southeast quarter of Section 2; thence north along the western boundary line of said southeast quarter of Section 2, 100 rods to a point; thence east on a line parallel with the southern boundary line of said southeast quarter of Section 2, 32 rods to a point; thence south on a line parallel with the western boundary line of said southeast quarter of Section 2, 100 rods to the southern boundary line of said southeast quarter; thence west along the northern boundary line of said southeast quarter of Section 2, 32 rods to the point of beginning.

Said shares shall be transferred only with the approval of the Corporation upon the surrender of this Certificate, properly endorsed or assigned and which the Corporation is authorized to issue or purchase for delinquent assessments as provided by law. The total number of shares the holder thereof assents to and agrees to issue is Twenty, all of which are without par value and of the same class. By the acceptance of this Certificate the Corporation and all amendments thereto.

IN WITNESS WHEREOF, the duly authorized officers of this Corporation have hereunto subscribed their names and caused its corporate seal to be affixed hereto, this \_\_\_\_\_ day of \_\_\_\_\_, 19\_\_\_\_.

Secretary

President



FOR VALUE RECEIVED \_\_\_\_\_ HEREBY SELL, ASSIGN AND TRANSFER UNTO \_\_\_\_\_

\_\_\_\_\_  
SHARES REPRESENTED  
BY THE WITHIN CERTIFICATE AND DO HEREBY IRREVOCABLY CONSTITUTE AND

APPOINT \_\_\_\_\_ ATTORNEY  
TO TRANSFER THE SAID SHARES ON THE SHARE REGISTER OF THE WITHIN  
NAMED CORPORATION, WITH FULL POWER OF SUBSTITUTION IN THE PREMISES.

DATED \_\_\_\_\_ 19 \_\_\_\_\_

IN PRESENCE OF \_\_\_\_\_ } \_\_\_\_\_  
\_\_\_\_\_ }

NOTICE: THE SIGNATURE OF THE ASSIGNEE HERE  
ON THIS CERTIFICATE SHALL BE VALID AND  
PLACE OF THE CERTIFICATE IN EVERY PARTICULAR  
WITHOUT ALTERATION OR ENLARGEMENT, OR ANY  
CHANGE WHATSOEVER.