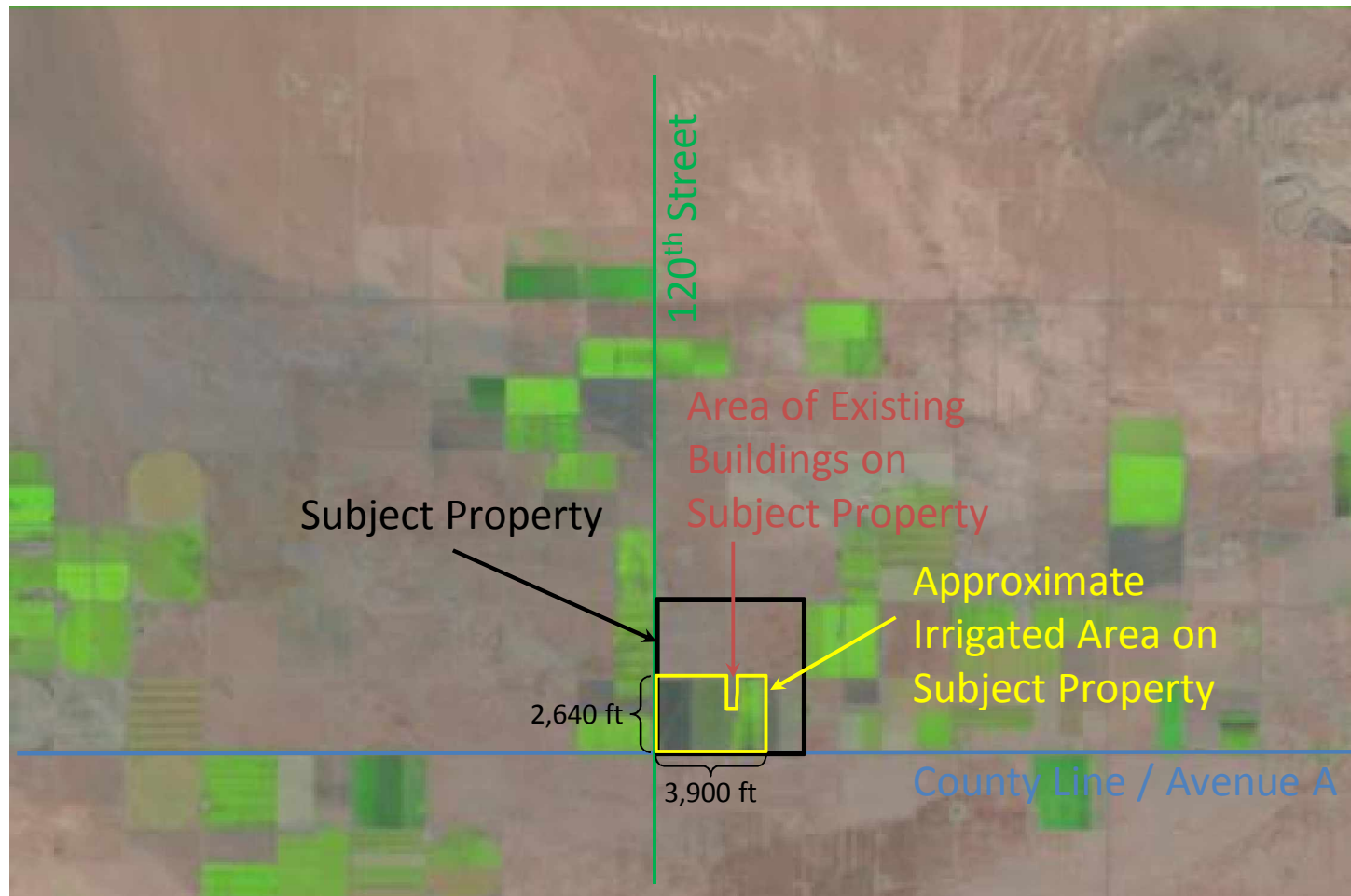


Exhibit L

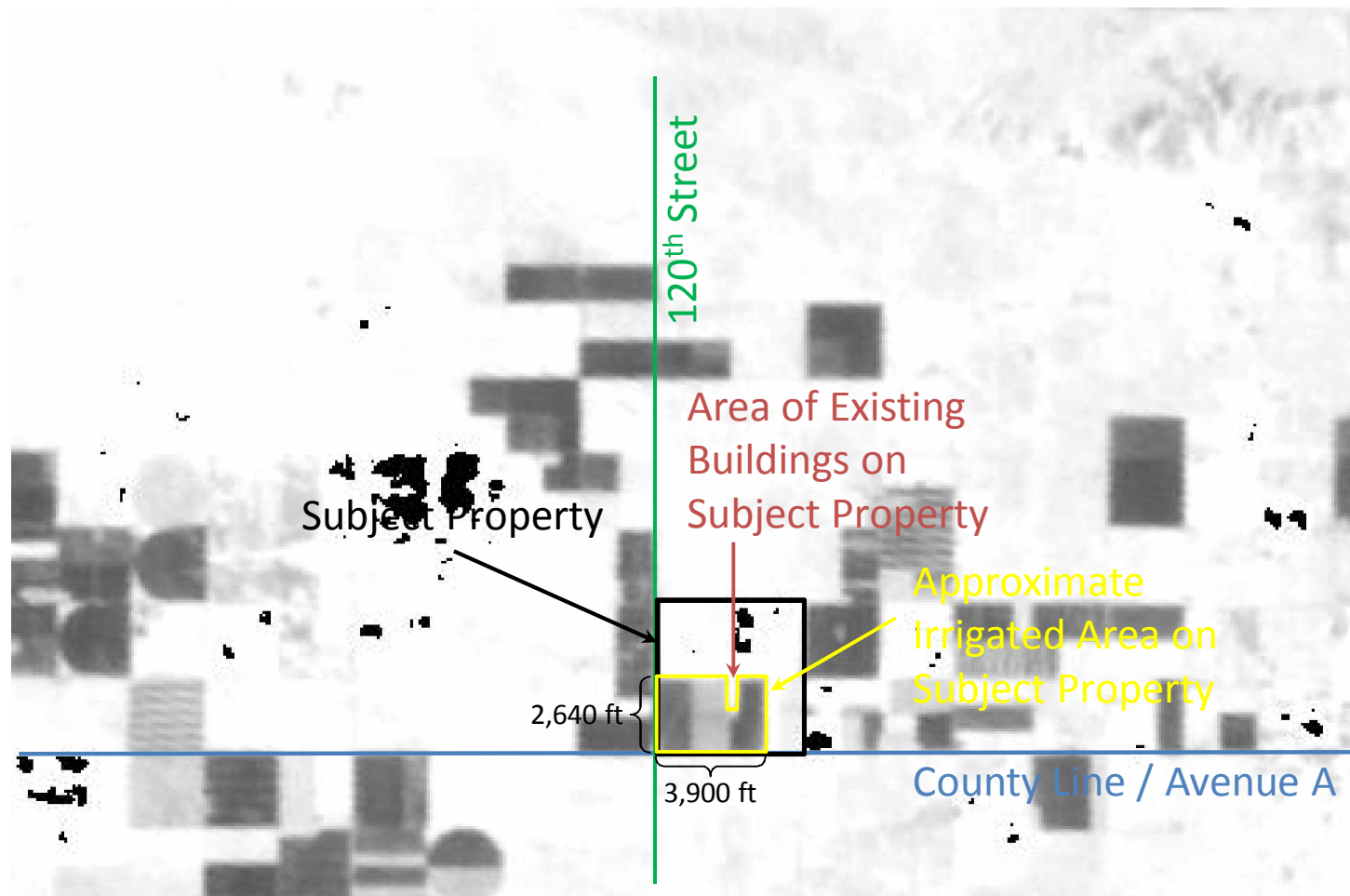
LANDSATLook Images

- Subject Property: Copa De Oro Land Company property (T9N R14W Section 35)
 - Total area = approximately 640 acres (i.e., 1 mi²), including approximately 40-acre Los Angeles Department of Water and Power (“LADWP”) right-of-way
 - Irrigated agriculture on southern portion of property, **approximately 220 acres in 2002** based on yellow polygon shown in following slides; excludes areas of existing buildings (approx. 12 acres) and non-cropped area of road along LADWP right-of-way (approx. 2 acres)
- All images obtained from <http://earthexplorer.usgs.gov/>
 - Search for “Palmdale, CA” gives results for LANDSAT path 41, row 36, which includes the area of interest
 - Also, coordinates of Subject Property are: 34°49’37”N, 118°20’7”W
 - Dataset is “L7 ETM+ SLC-on (1999-2003)” – i.e., LANDSAT 7 Enhanced Thematic Mapper Plus, with Scan Line Corrector active
- “Natural Color” images use the following LANDSAT Enhanced Thematic Mapper band assignments:
 - Blue = band 5 (near infrared); Green = band 4 (near infrared); Red = band 3 (visible red)
 - Strong infrared reflectance (i.e., from vegetation) shows up as bright green
- Thermal Infrared images are single-band gray-scale images using Enhanced Thematic Mapper band 6
 - Colder regions (i.e., due to active evapotranspiration) are darker, hotter regions are lighter
- See <http://landsat.usgs.gov/LandsatLookImages.php>

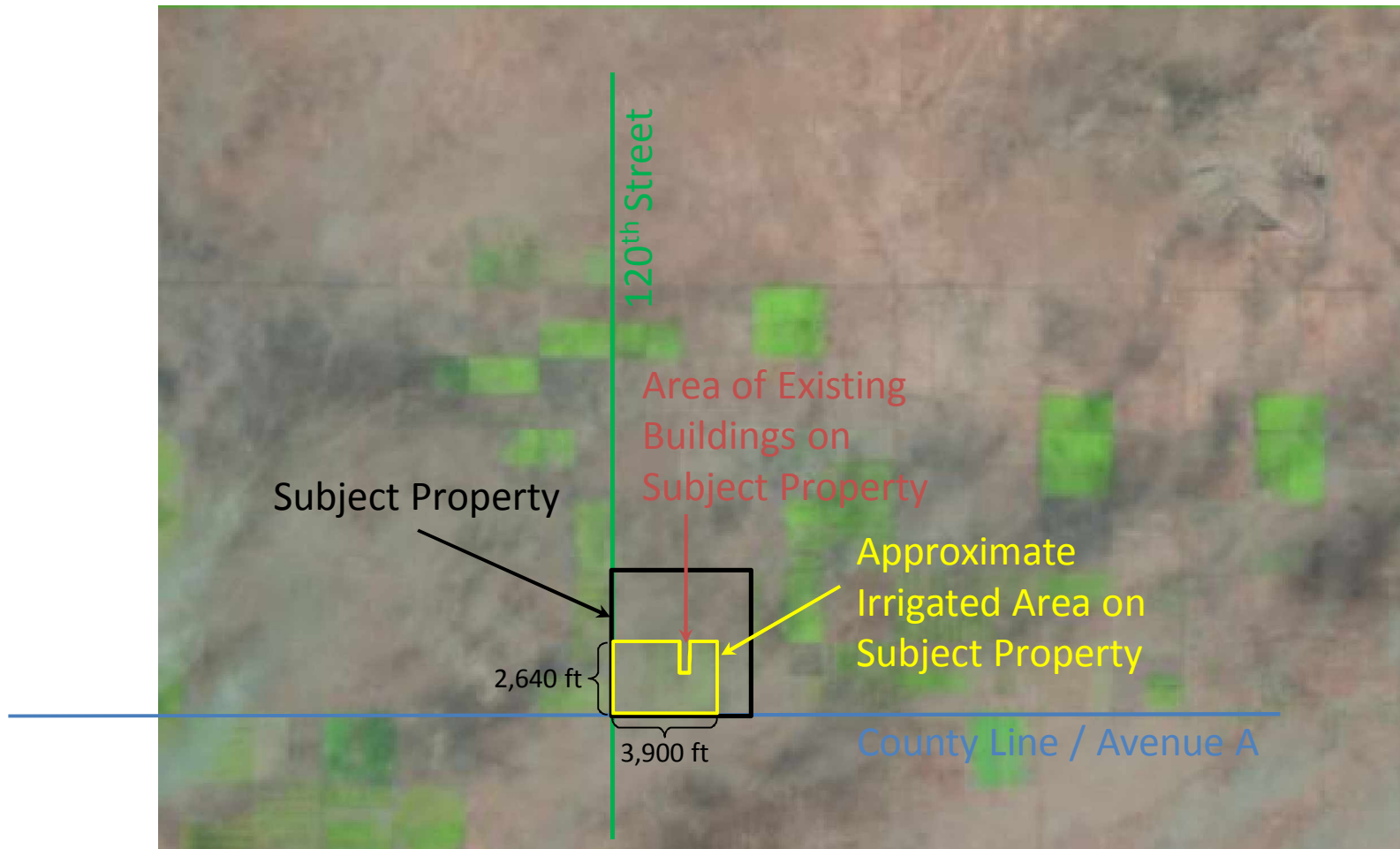
LANDSATLook “Natural Color” Image – 11 Aug 2002



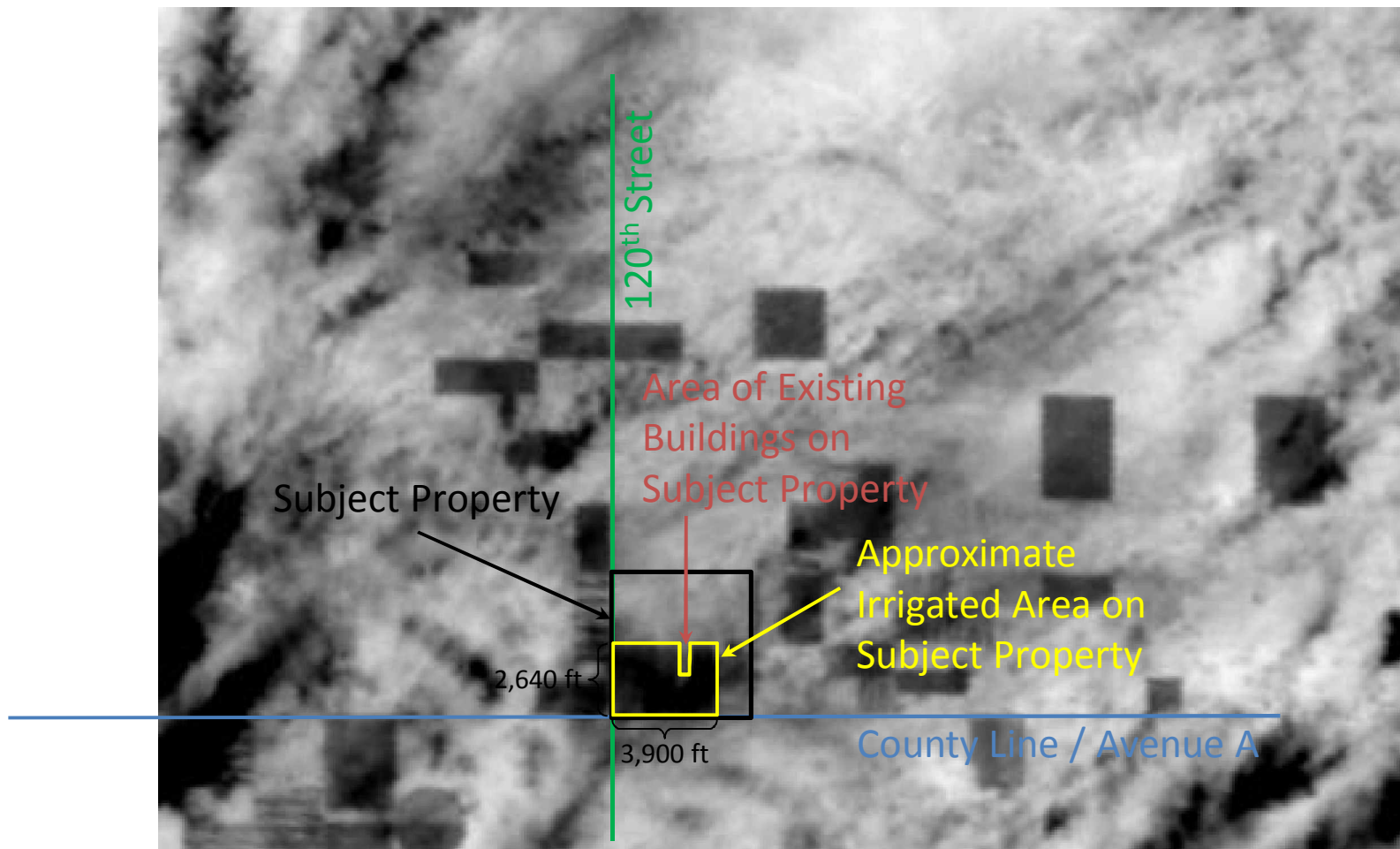
LANDSATLook Thermal Infrared Image – 11 Aug 2002



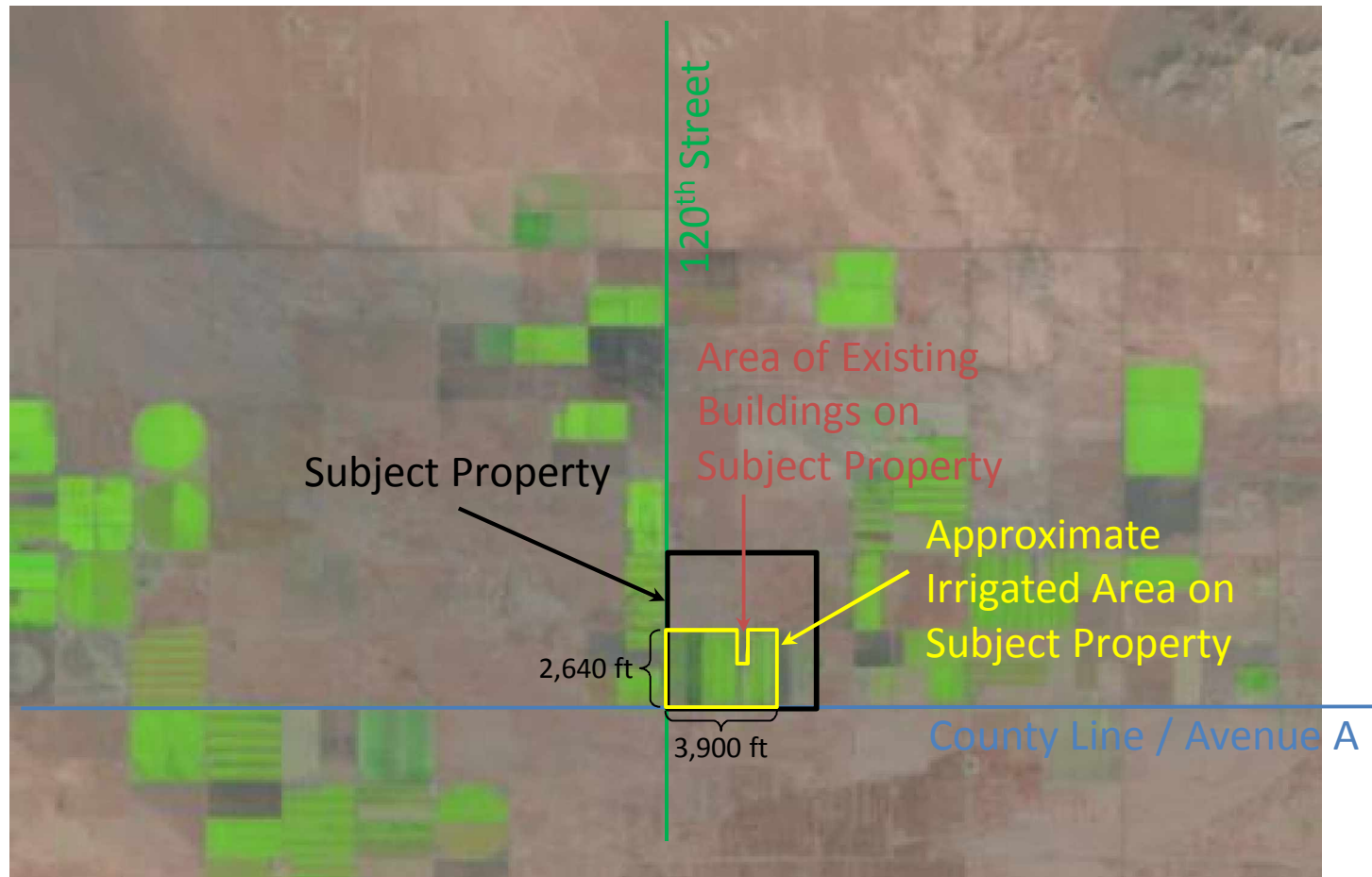
LANDSATLook “Natural Color” Image – 27 Aug 2002



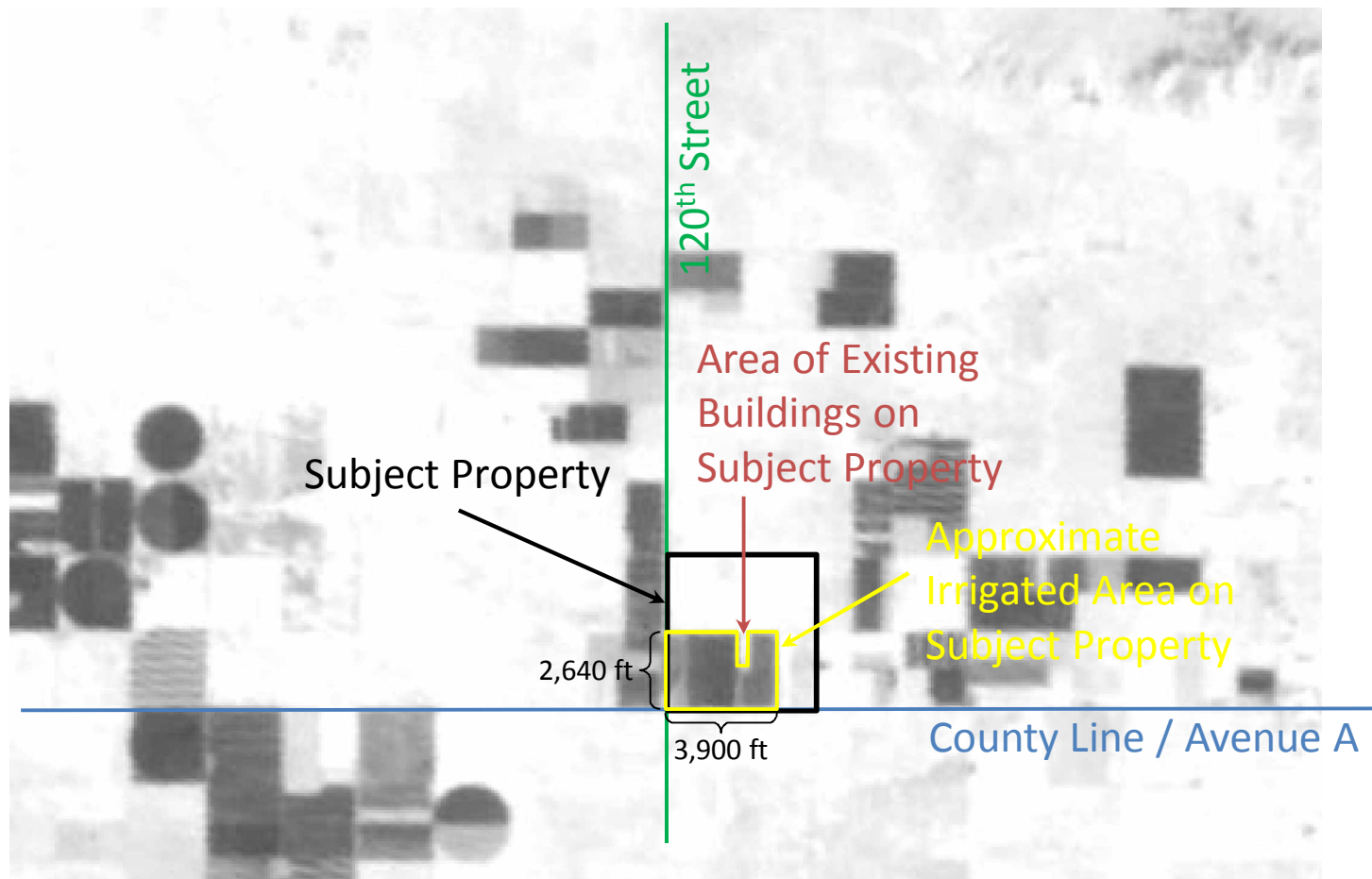
LANDSATLook Thermal Infrared Image – 27 Aug 2002



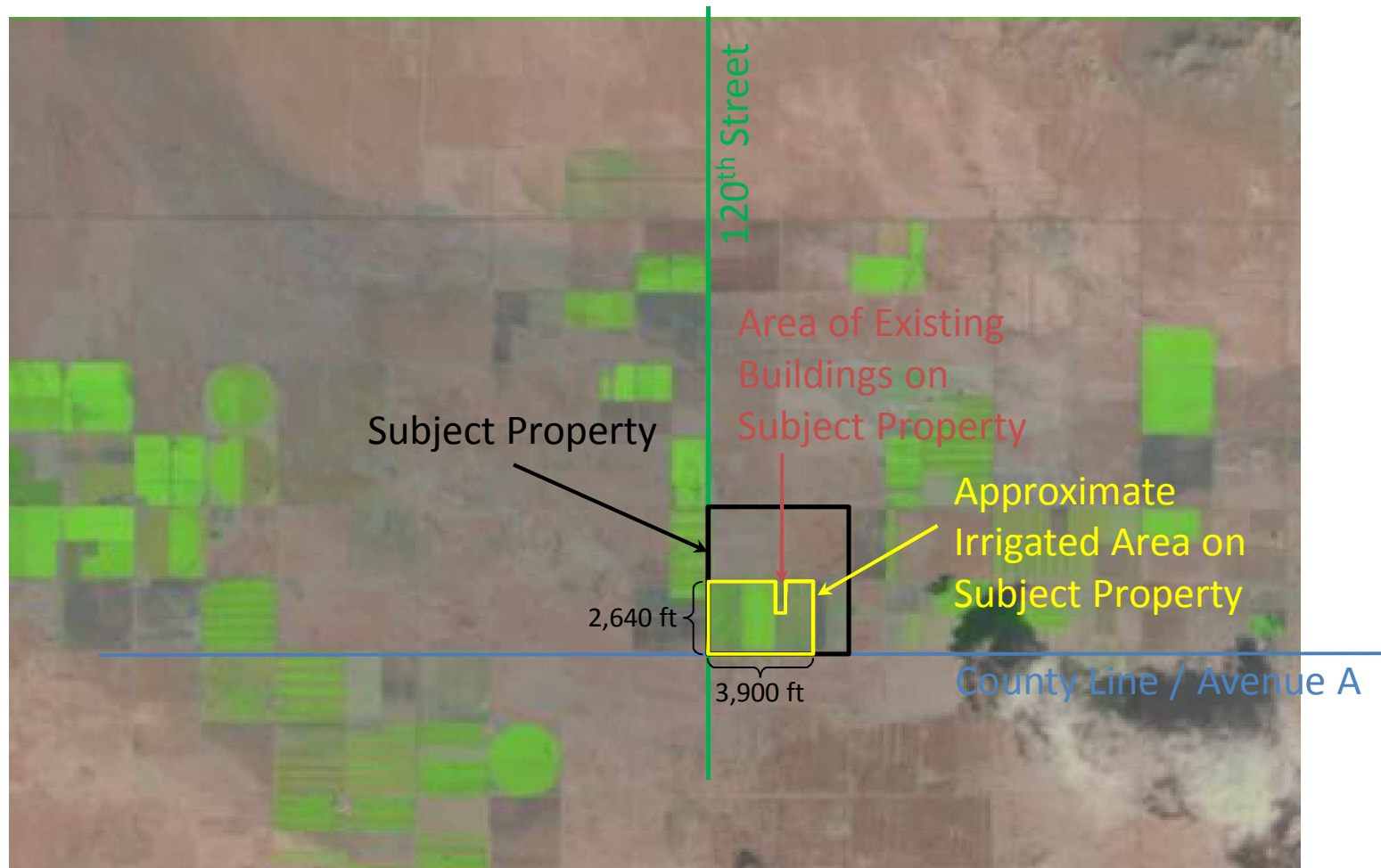
LANDSATLook “Natural Color” Image – 12 Sept 2002



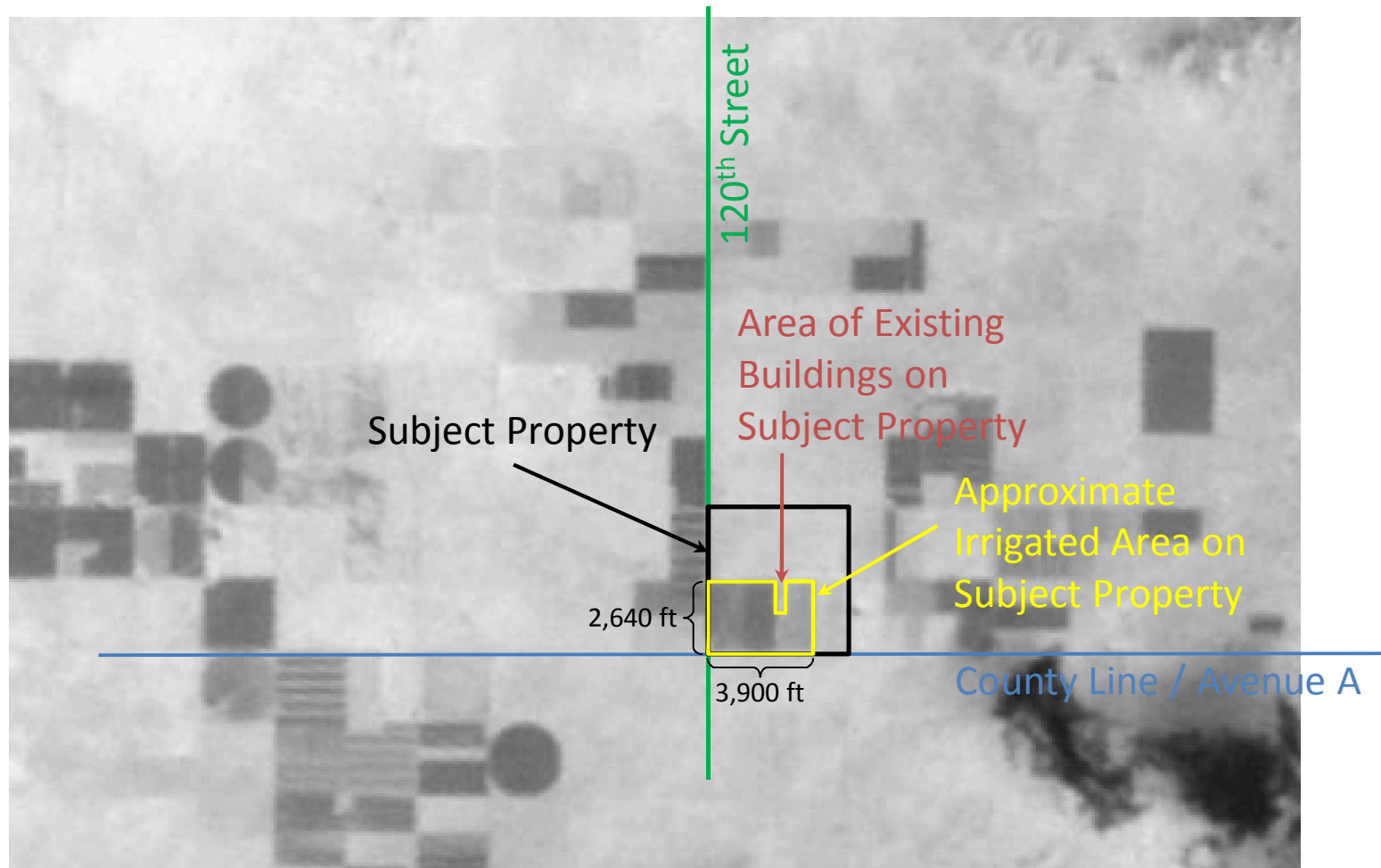
LANDSATLook Thermal Infrared Image – 12 Sept 2002



LANDSATLook “Natural Color” Image – 28 Sept 2002



LANDSATLook Thermal Infrared Image – 28 Sept 2002



Approximate Scale: 1 mile

Estimated Agricultural Water Use in 2002

- Based on **approximately 220 acres of total irrigated area** (see yellow polygon on preceding slides)
- Crops historically grown on Subject Property include carrots, onions, and pumpkins (from Kern County Department of Agriculture and Measurement Standards [“KCDAMS”] pesticide permit and use records)
- Antelope Valley Expert Report (Beeby et al., 2010) Appendix D Table D.3-2 provides average total applied water values for these crops as follows:
 - Carrots: 3.9 acre-feet per acre (“AF/acre”)
 - Onions: 4.5 AF/acre
 - Pumpkins (Melons & Squash): 2.8 AF/acre
- KCDAMS records indicate 60 acres of pumpkins grown on Subject Property in 2002 (i.e., records do not account for total cropped area).
 - Review of LANDSAT images indicates that pumpkins, which have a late growing season, were likely grown in the central field
 - Using Beeby et al. (2010) crop factors – gives 170 AF of water use (60 acre * 2.8 AF/acre).

Estimated Water Use in 2002 (cont.)

- Assuming remainder of total irrigated area (i.e., 160 acres) was for production of:
 - Carrots – then total water use is $170 + 620 = 790$ AF
 - Onions – then total water use is $170 + 720 = 890$ AF
 - Pumpkins were not likely grown on remainder of total irrigated area (160 acres) because patterns of vegetation outside of the approx. 60-acre central field suggest earlier growing season consistent with carrots or onions, both of which were historically grown on the property
- The estimated range of total water use using the Beeby et al. (2010) crop water use factors is 790 AF to 890 AF, consistent with AVEK water deliveries to the Subject Property (842 AF) in 2002.