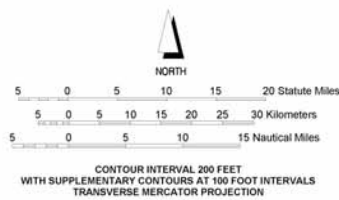


EXPLANATION

NOTES:

1. This map is Exhibit B to the Letter Report entitled: Summary of Assessment of Phase 1 Issues, Yim Bollinger Farms, Inc. v. City of Lancaster, et al. (RCSB Case No. RIV 344436) (Consolidated with Case Nos. 344668 & 353840) dated July 18, 2002.
2. Base map modified from U.S.G.S. Western United States 1:250,000 scale Bakersfield, Trona, San Bernardino, and Los Angeles quadrangles (revisions dated 1971, 1969, 1969, and 1975 respectively).



ndary	
Drawn by	NAV_JAS
Checked by	NTS
August 2, 2002	

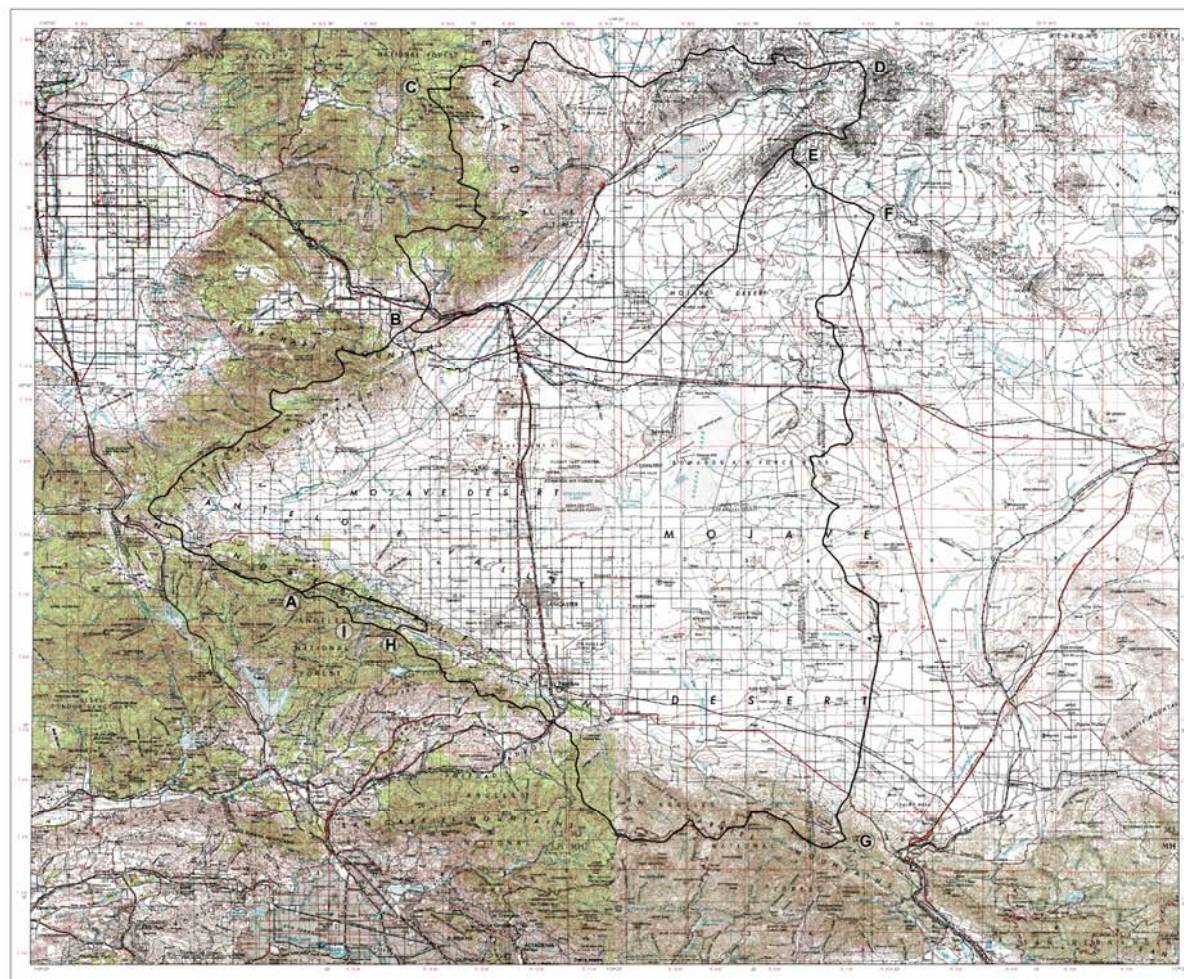
EXHIBIT NUMBER

89



EXHIBIT NUMBER

90



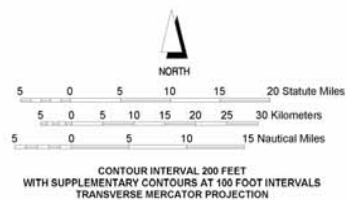
EXPLANATION

— Watershed Boundaries

91

NOTES:

1. This map is Exhibit B to the Letter Report entitled: Summary of Assessment of Phase 1 Issues, Xim Balboa Farms, Inc. v. City of Lancaster, et al. RCSC Case No. RIV 344426 (Consolidated with Case Nos. 344068 & 353842) dated July 16, 2002.
2. Base map modified from U.S.G.S. Western United States 1:250,000 scale Bakersfield, Trona, San Bernardino, and Los Angeles quadrangles (revisions dated 1971, 1969, 1969, and 1978 respectively).



Map of Phase 1 Area Boundary



NAV, JAS

NTS

August 2, 2002

EXHIBIT NUMBER

91

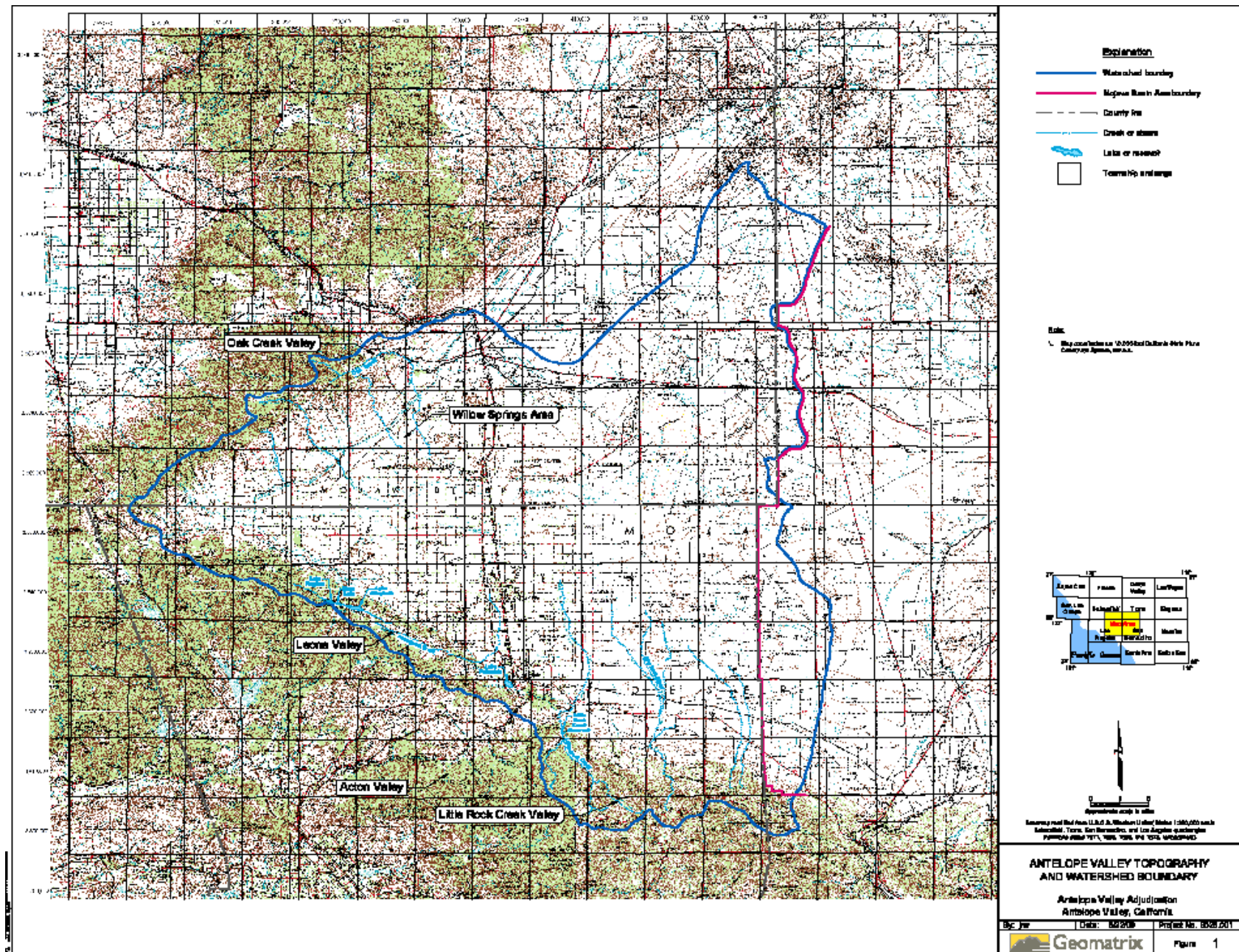


EXHIBIT NUMBER

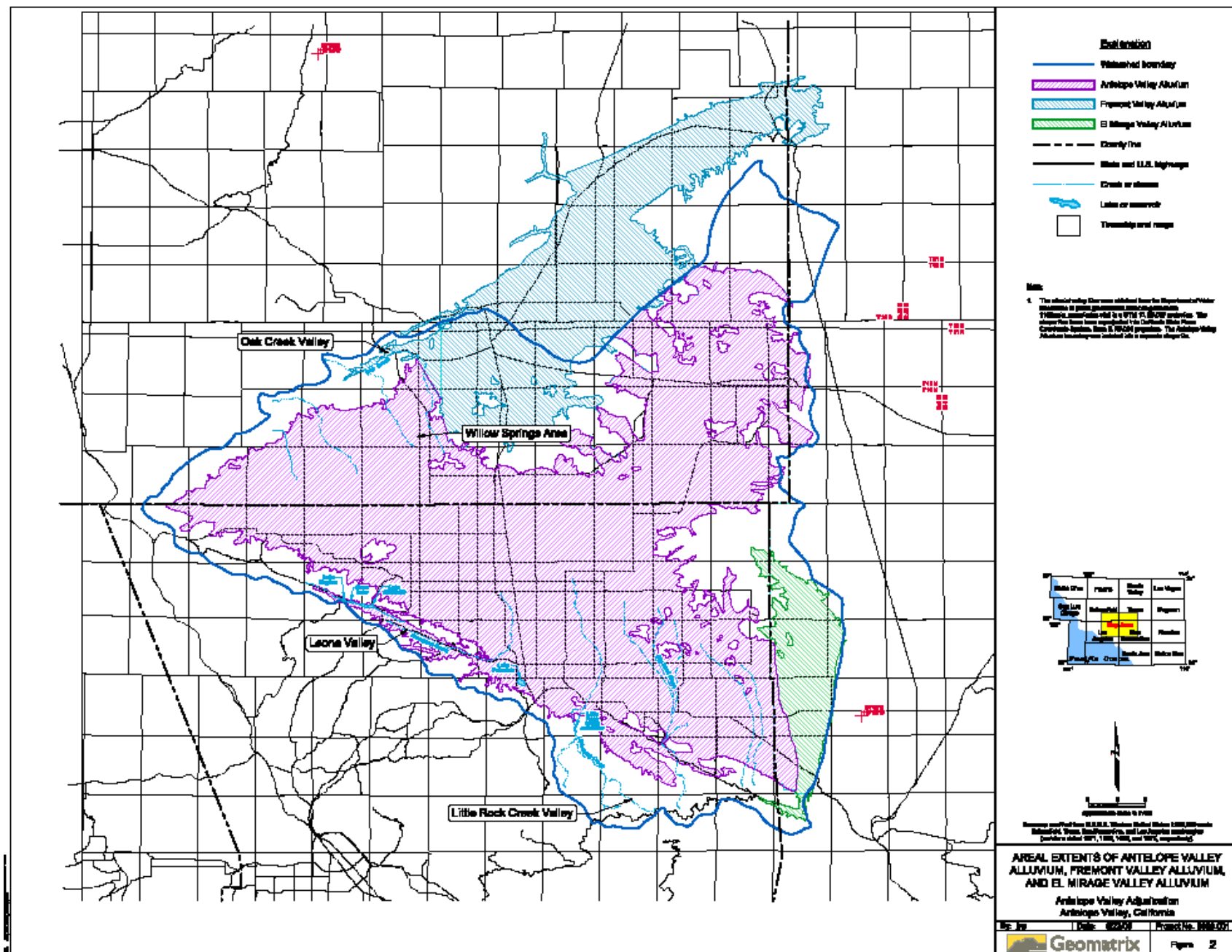


EXHIBIT NUMBER

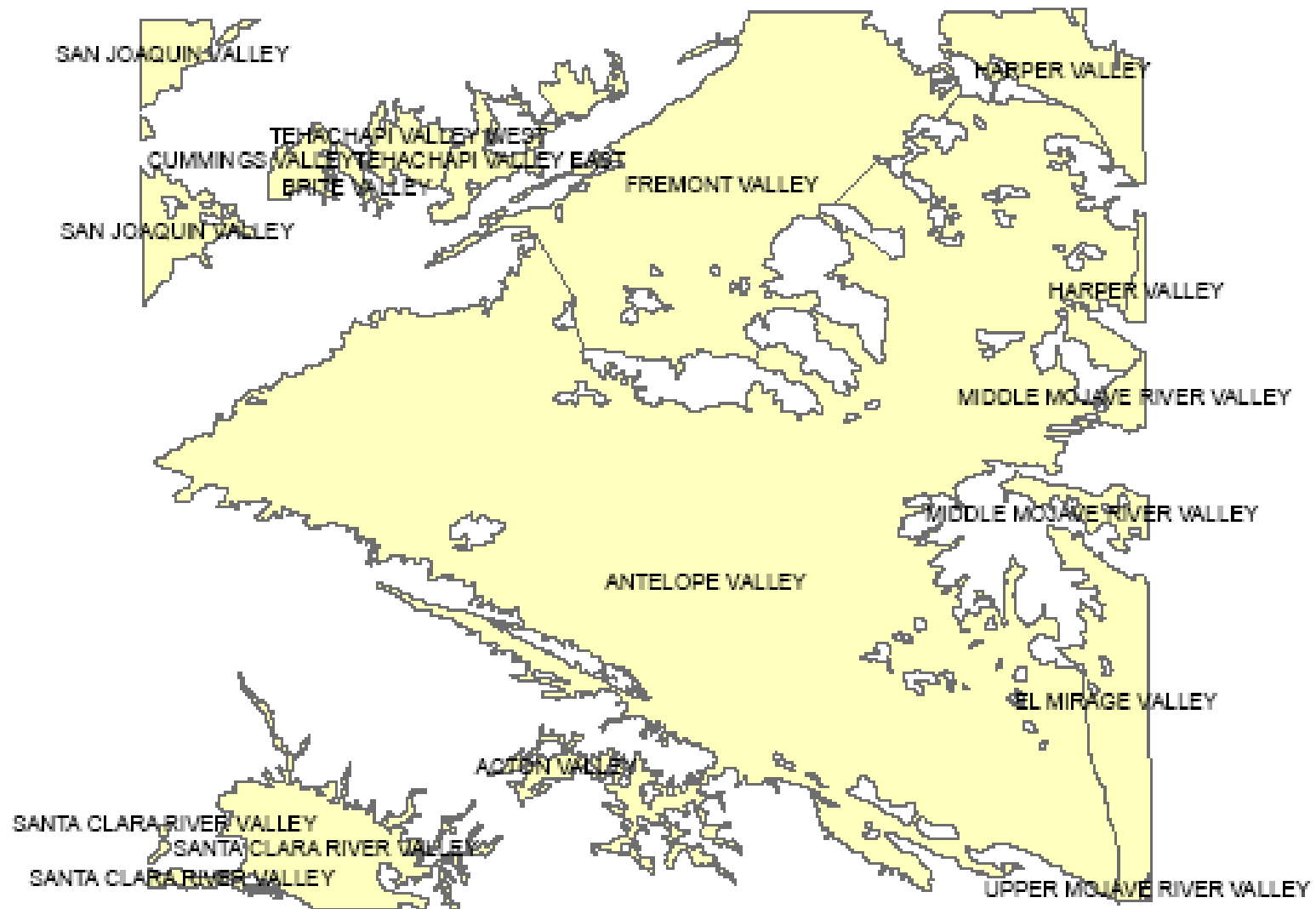


EXHIBIT NUMBER

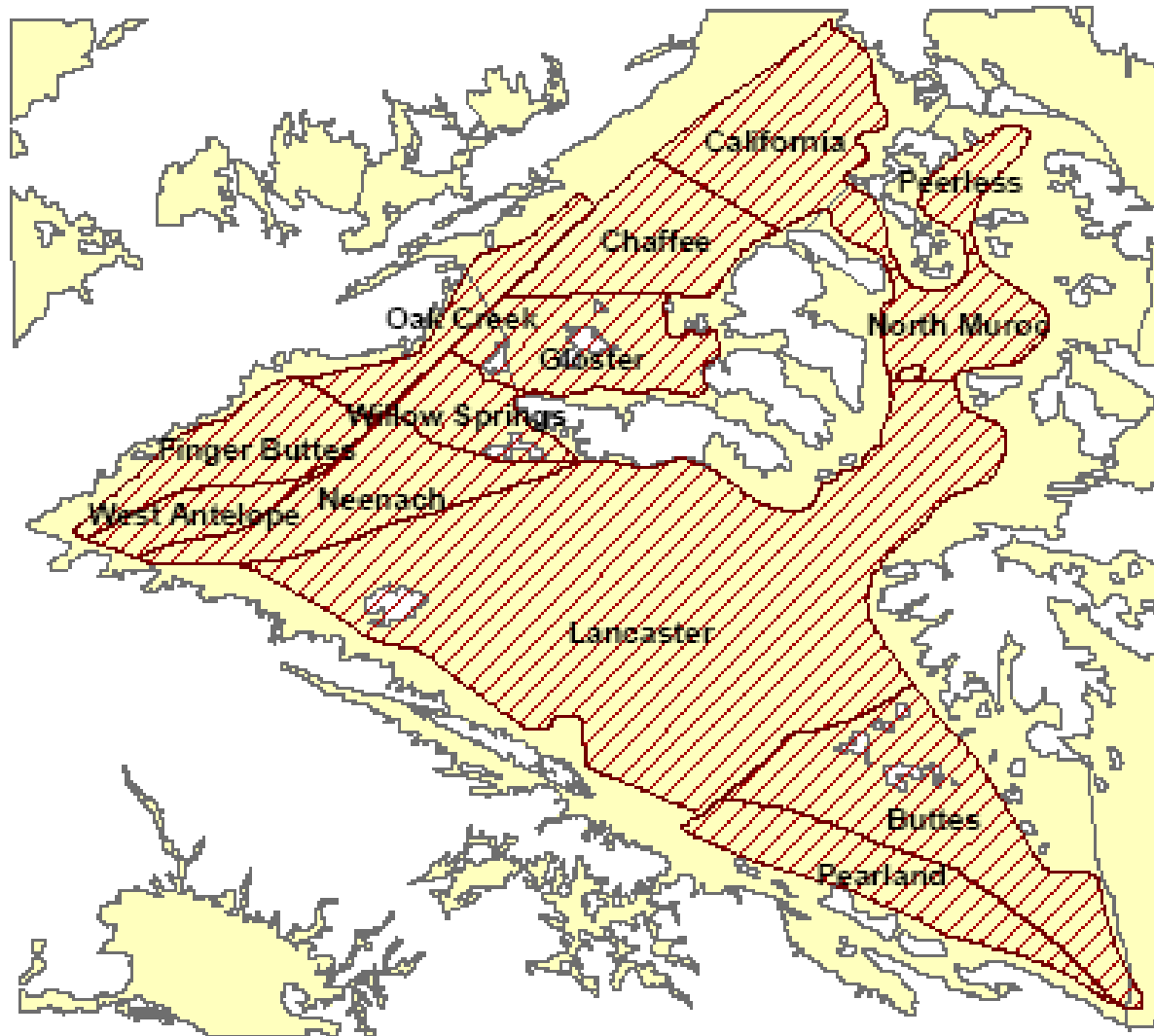


EXHIBIT NUMBER

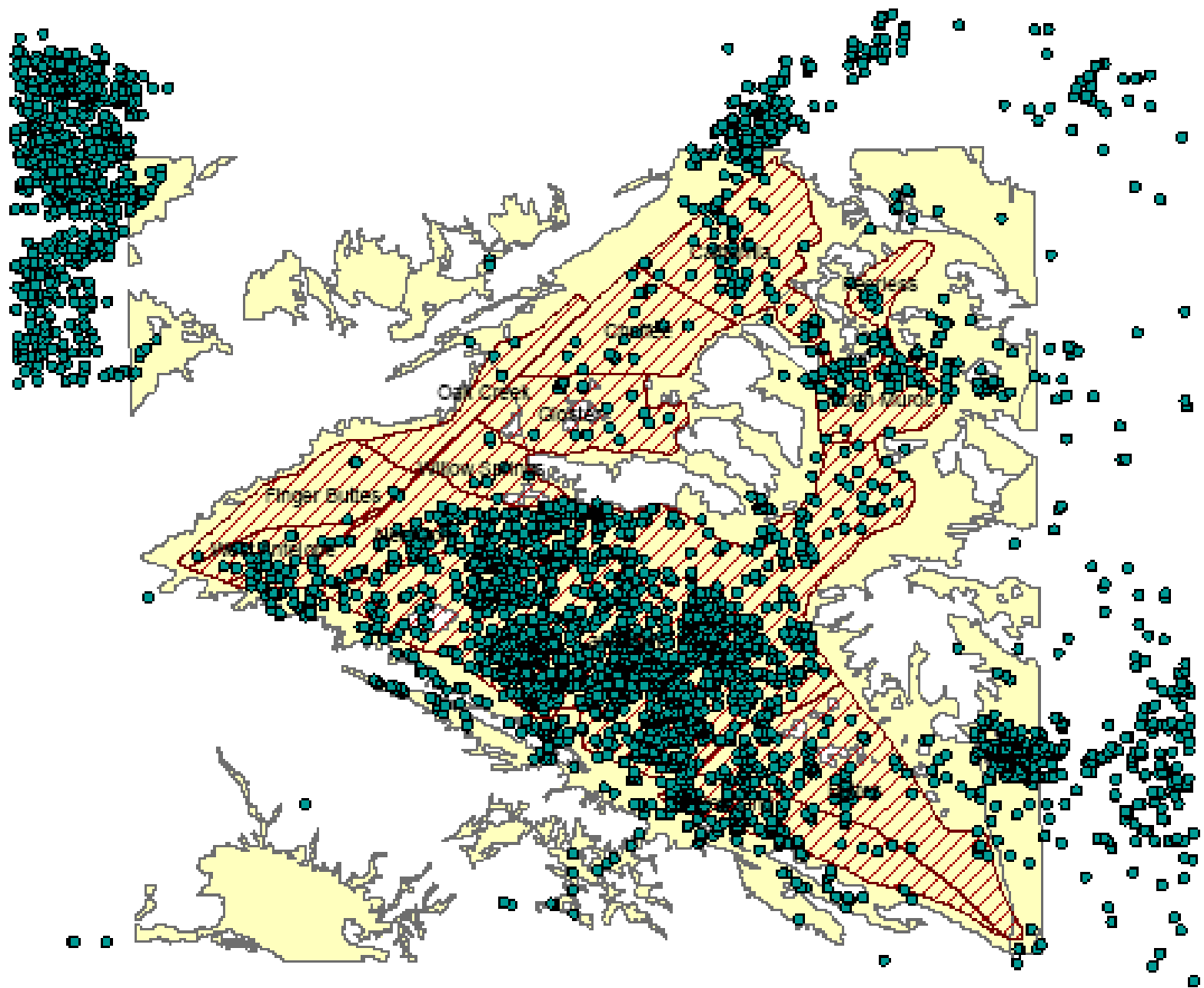
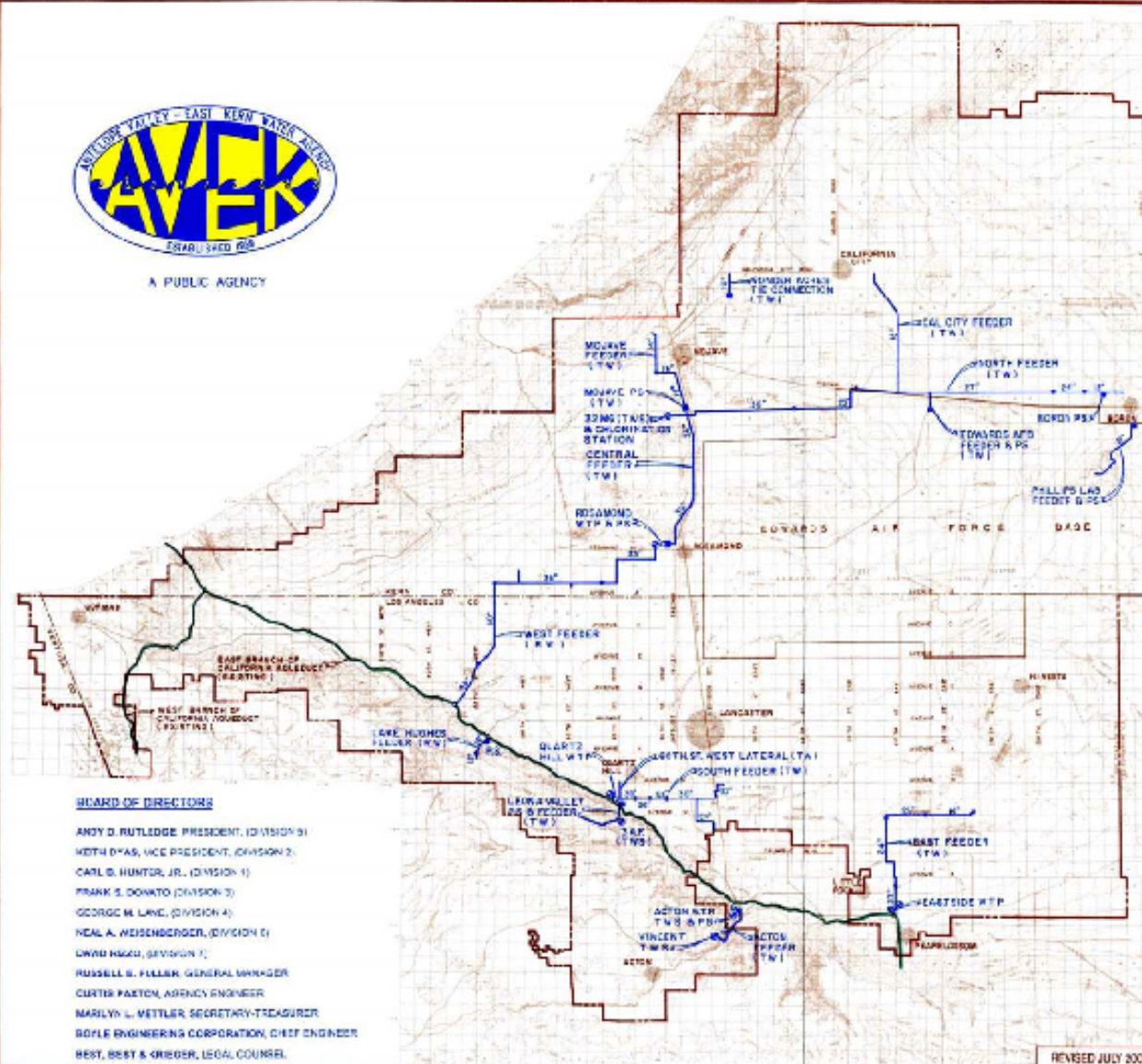


EXHIBIT NUMBER



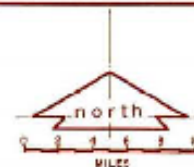
A PUBLIC AGENCY



BOARD OF DIRECTORS

ANDY D. RUTLEDGE, PRESIDENT, (DIVISION 3)
 WETH D'AS, VICE PRESIDENT, (DIVISION 2)
 CARL S. HUNTER, JR., (DIVISION 1)
 FRANK S. DONATO, (DIVISION 3)
 GEORGE M. LANE, (DIVISION 4)
 NEAL A. WEISBERGER, (DIVISION 5)
 EDWARD HIGGINS, (DIVISION 7)
 RUSSELL S. FULLER, GENERAL MANAGER
 CURTIS PAXTON, AGENCY ENGINEER
 MARILYN L. VETTLER, SECRETARY-TREASURER
 BOYLE ENGINEERING CORPORATION, CHIEF ENGINEER
 BEST, BEST & ORRINGER, LEGAL COUNSEL

REVISED JULY 2001



LEGEND

- TURNOUT FROM CALIFORNIA AQUEDUCT
- △ WATER TREATMENT PLANT (WTP)
- PUMP STATION (PS)
- RAW WATER STORAGE (RWS)
- TREATED WATER STORAGE (TWS)
- RW INDICATES RAW WATER FACILITY
- TW INDICATES TREATED WATER FACILITY

FACILITY

QUARTZ HILL WATER TREATMENT PLANT
 TREATED WATER STORAGE
 SOUTH FEEDER
 NORTH STREET WEST LATERAL
 LINDA VALLEY PS, FEEDER & RES (TWS)

WEST FEEDER (RW)

RODAMOND WATER TREATMENT PLANT
 RAW WATER STORAGE
 TREATED WATER STORAGE
 RODAMOND PS
 CENTRAL FEEDER
 NORTH FEEDER
 EDWARDS APS FEEDER
 EDWARDS APS PS
 BORDEN PS
 CAL CITY FEEDER
 MOHAVE RESERVOIRS (TWS)
 OIL OPERATION STATION
 MOHAVE PS & FEEDER
 PHILLIPS LAB PS & FEEDER

EASTSIDE WATER TREATMENT PLANT
 TREATED WATER STORAGE
 EAST FEEDER

ACTION WATER TREATMENT PLANT
 TREATED WATER STORAGE
 ACTION PS & FEEDER
 VINCENT RESERVOIR (TWS)

LAKE HUGHES PS & FEEDER

WATERSHED RESERVOIR & TIE CONNECTION

ELEVATION

AVK FACTS

AREA: LOS ANGELES COUNTY 694 SQ. MILES
 KERN COUNTY 1077 SQ. MILES
 VENTURA COUNTY 12 SQ. MILES
 TOTAL 2883 SQ. MILES

LOWEST POINT 1040 FEET AT KOON DRY LAKE

HIGHEST POINT 5217 FEET IN THE SAN GABRIEL MOUNTAINS

HOME OF EDWARDS AIR FORCE BASE

WEATHER:

AVERAGE ANNUAL PRECIPITATION IS APPROXIMATELY 8 INCHES.
 LESS THAN 1.5 INCHES OF THE TOTAL OCCURS BETWEEN APRIL AND OCTOBER.
 933 SQ. MILES OF THE AGENCY RECEIVES LESS THAN 5 INCHES OF RAIN ANNUALLY.

QUANTITY-SIZE-CAPACITY

65 MGD
 9.2 MG (16.4 MG ULTIMATE)
 32,000 LF (32" TO 24")
 6,000 LF (36")
 360 HP, 26,600 LF (18" TO 12") 1 MG

110,000 LF (30" TO 33")

14 MGD (20 MGD ULTIMATE)
 6.6 MG
 4.0 MG
 1800 HP
 54,200 LF (36")
 150,000 LF (36" TO 12")
 5,200 LF (24")
 100 HP
 85 HP
 41,200 LF (36")
 32 MGD

420 HP, 34,000 LF (18" TO 14")

225 HP, 20,000 LF (6")

10 MGD

1.0 MG (2.0 MG ULTIMATE)

74,000 (24" TO 16")

4 MGD (8 MGD ULTIMATE)

1.4 MG (2.5 MG ULTIMATE)

1000 HP, 16,000 LF (24")

2 MG (4 MG ULTIMATE)

200 HP, 9,000 LF (14" TO 12")

15 HP, 7,000 LF (10")

MULTIWAVE BURIED CREEK & INWUD

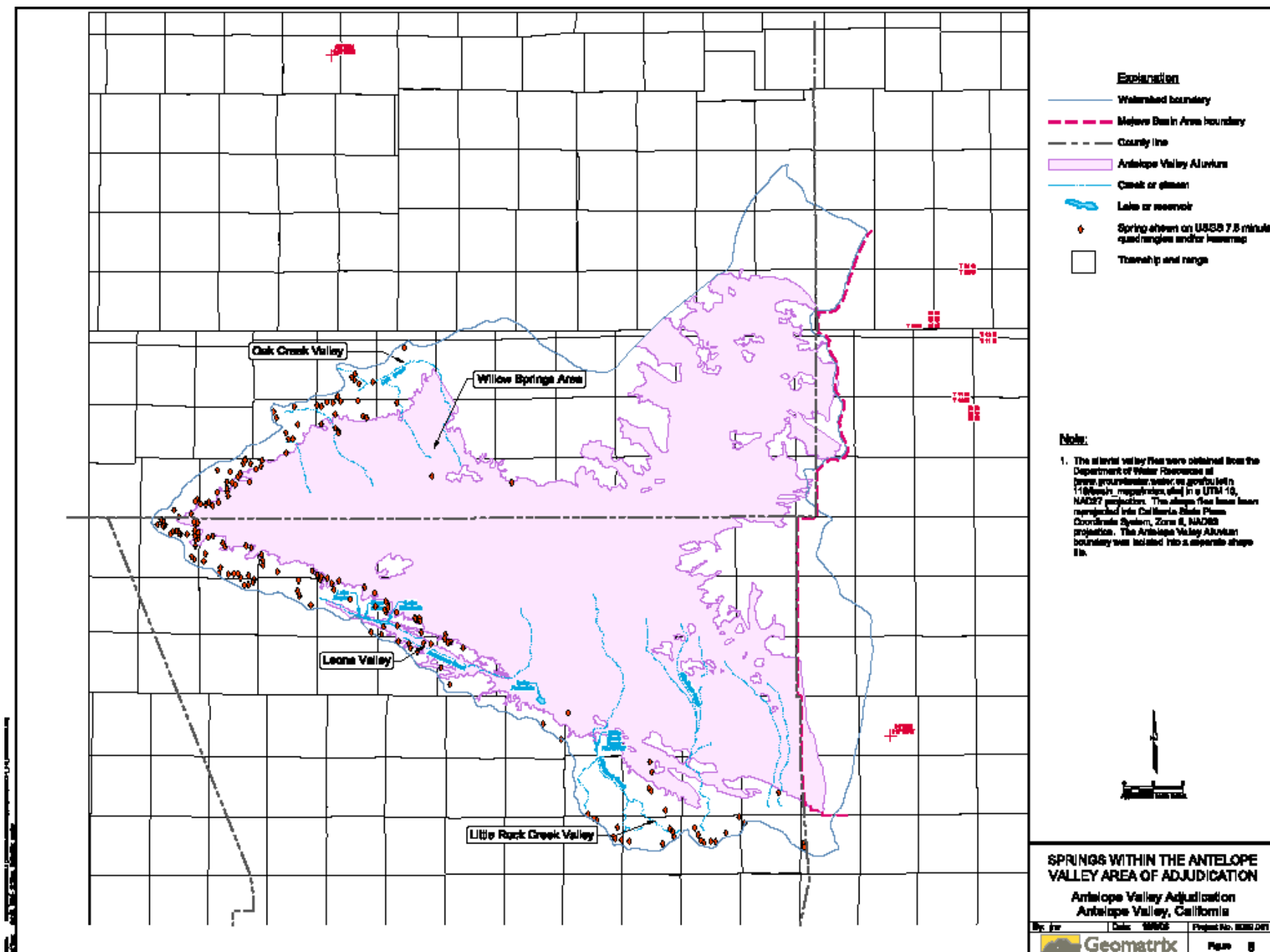


EXHIBIT NUMBER

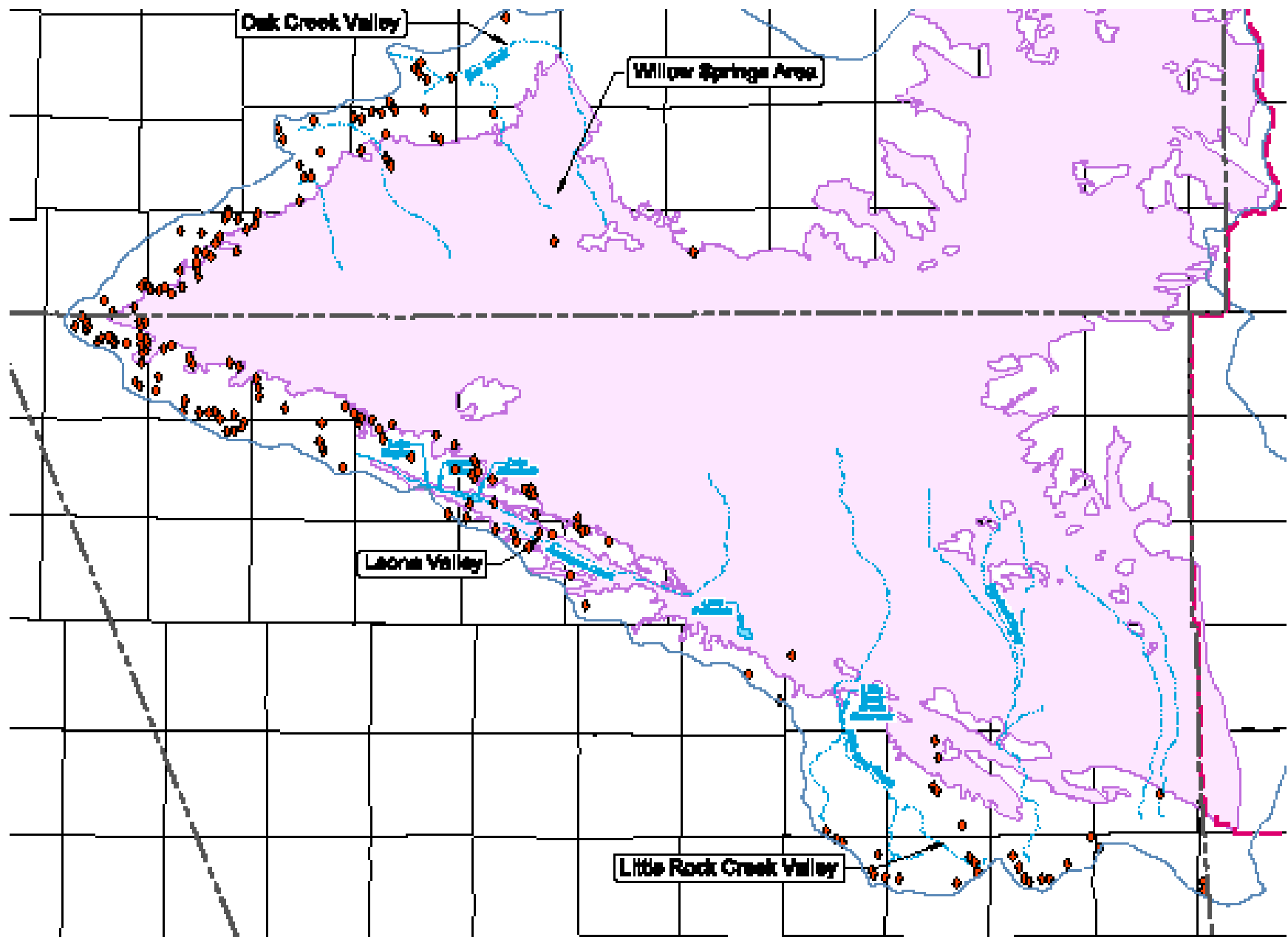


EXHIBIT NUMBER

100

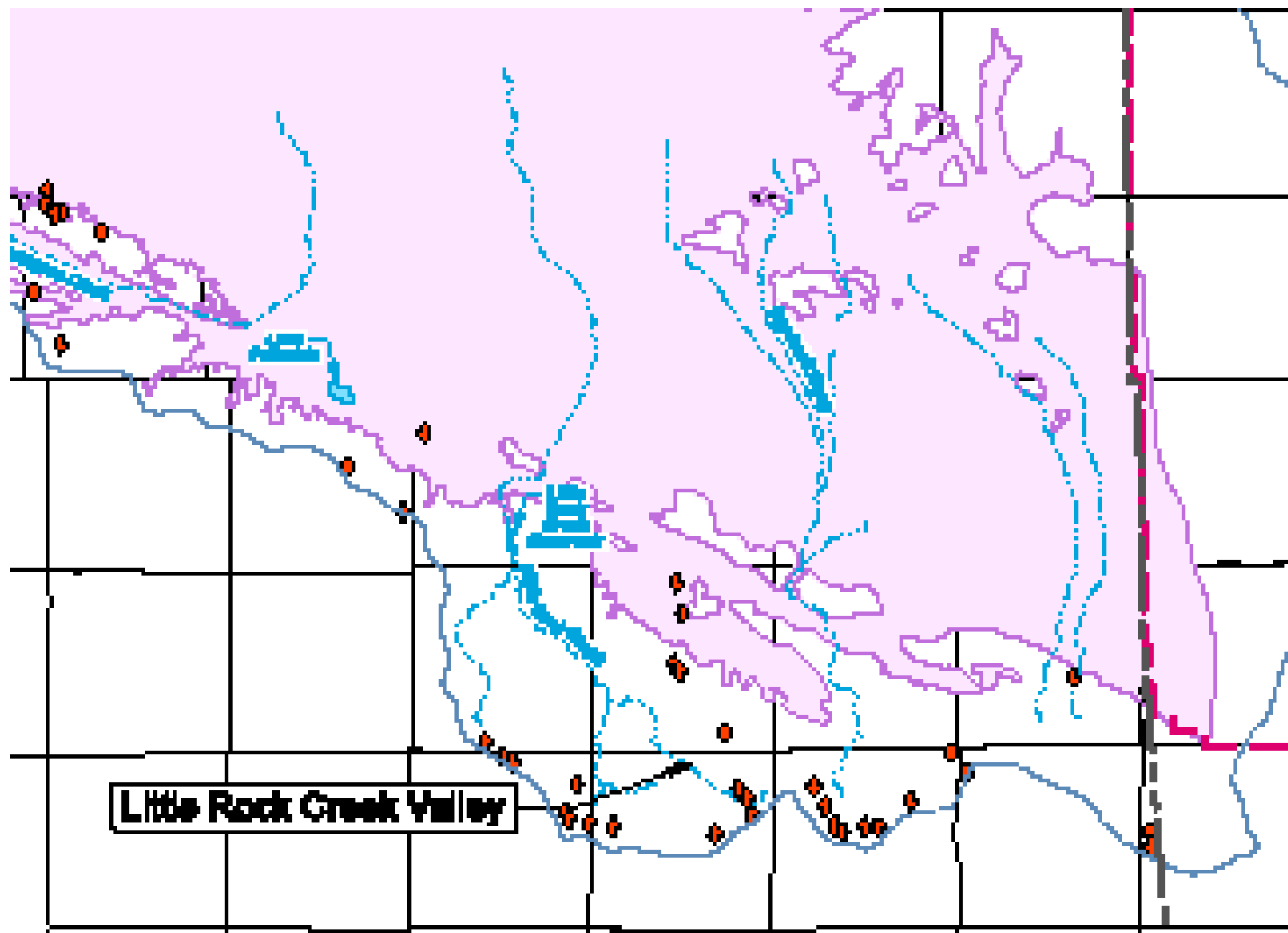
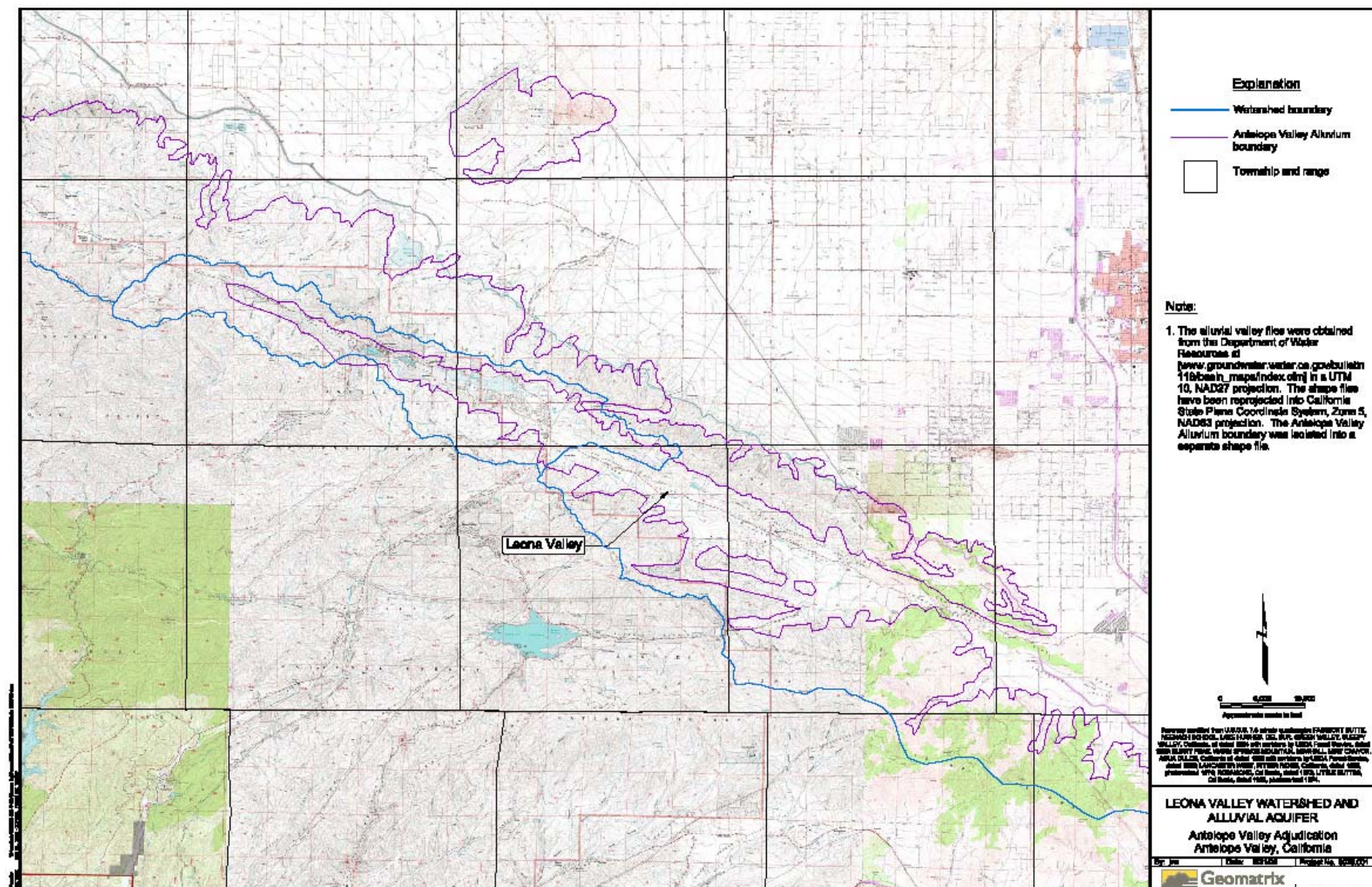


EXHIBIT NUMBER

101



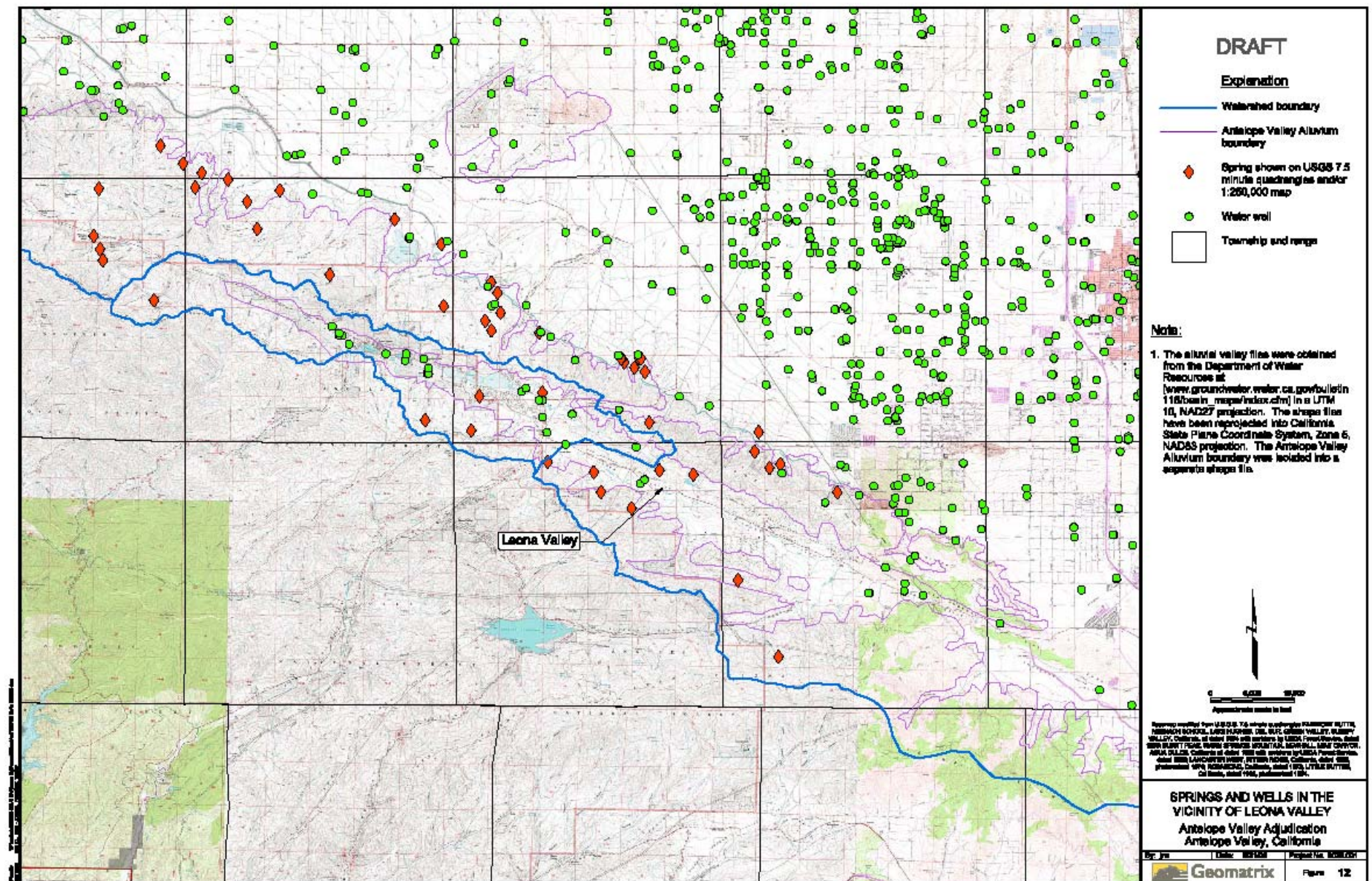


EXHIBIT NUMBER

104

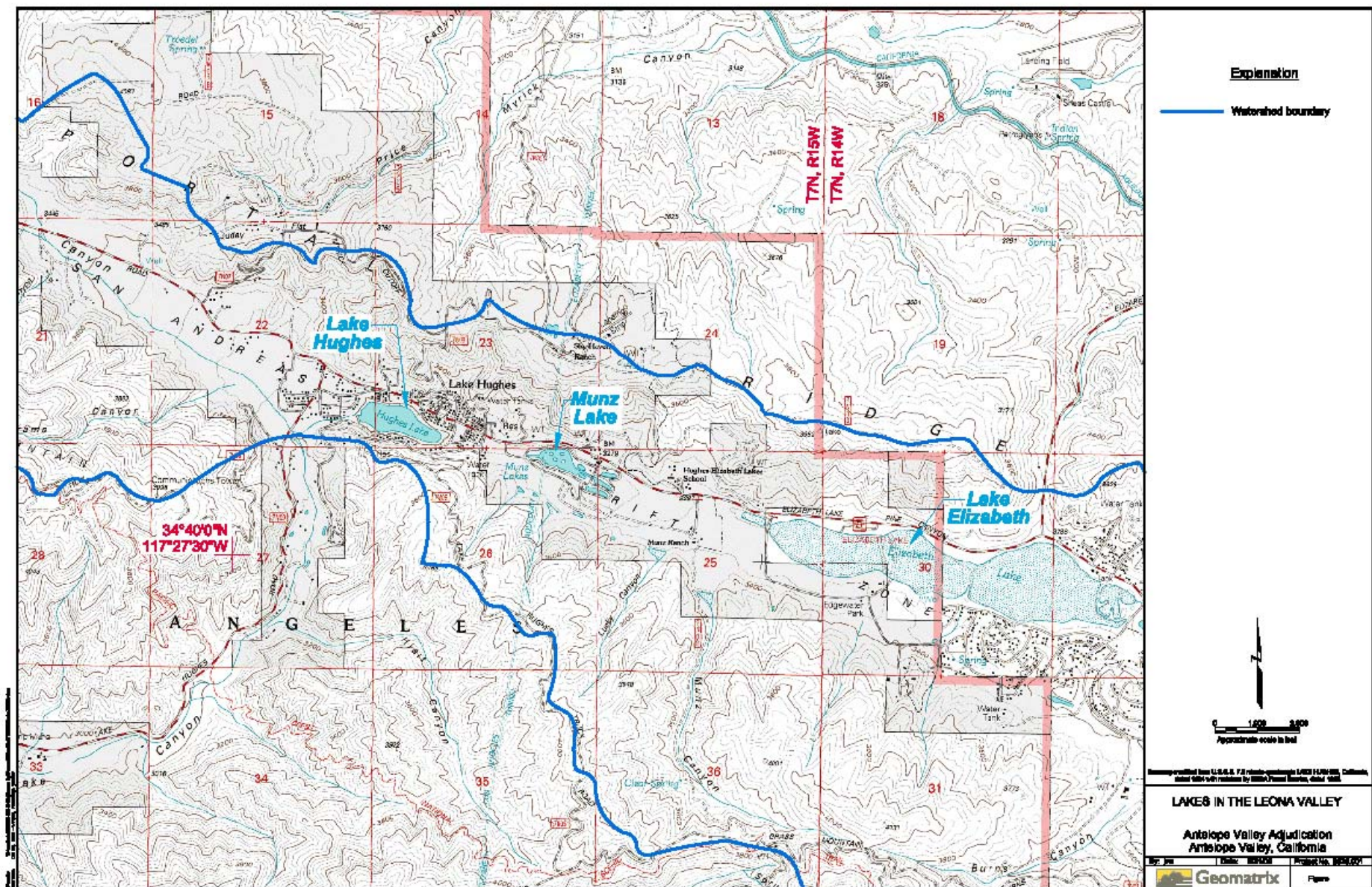


EXHIBIT NUMBER

105

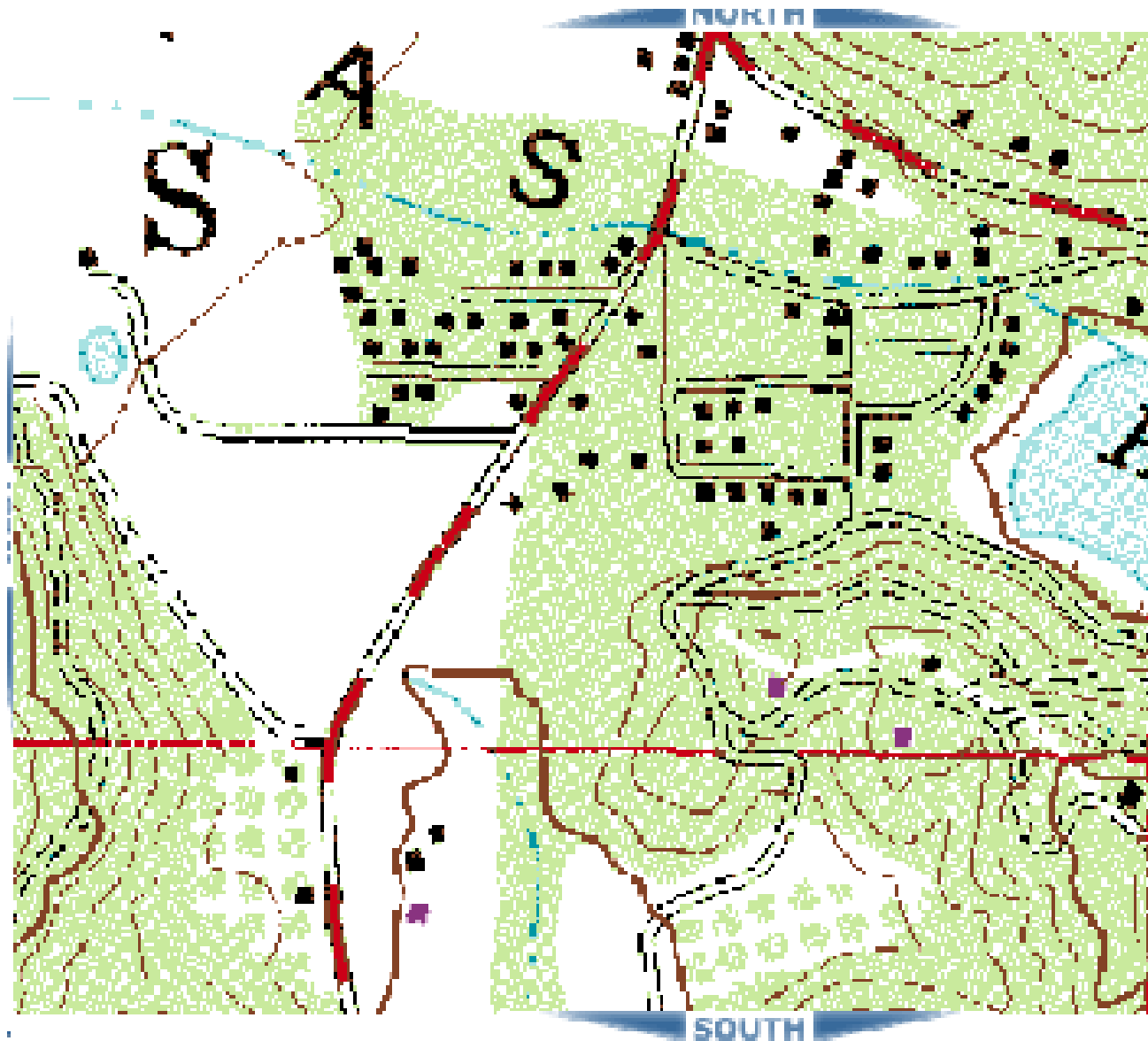


Image courtesy of the U.S. Geological Survey

m yds

EXHIBIT NUMBER

106

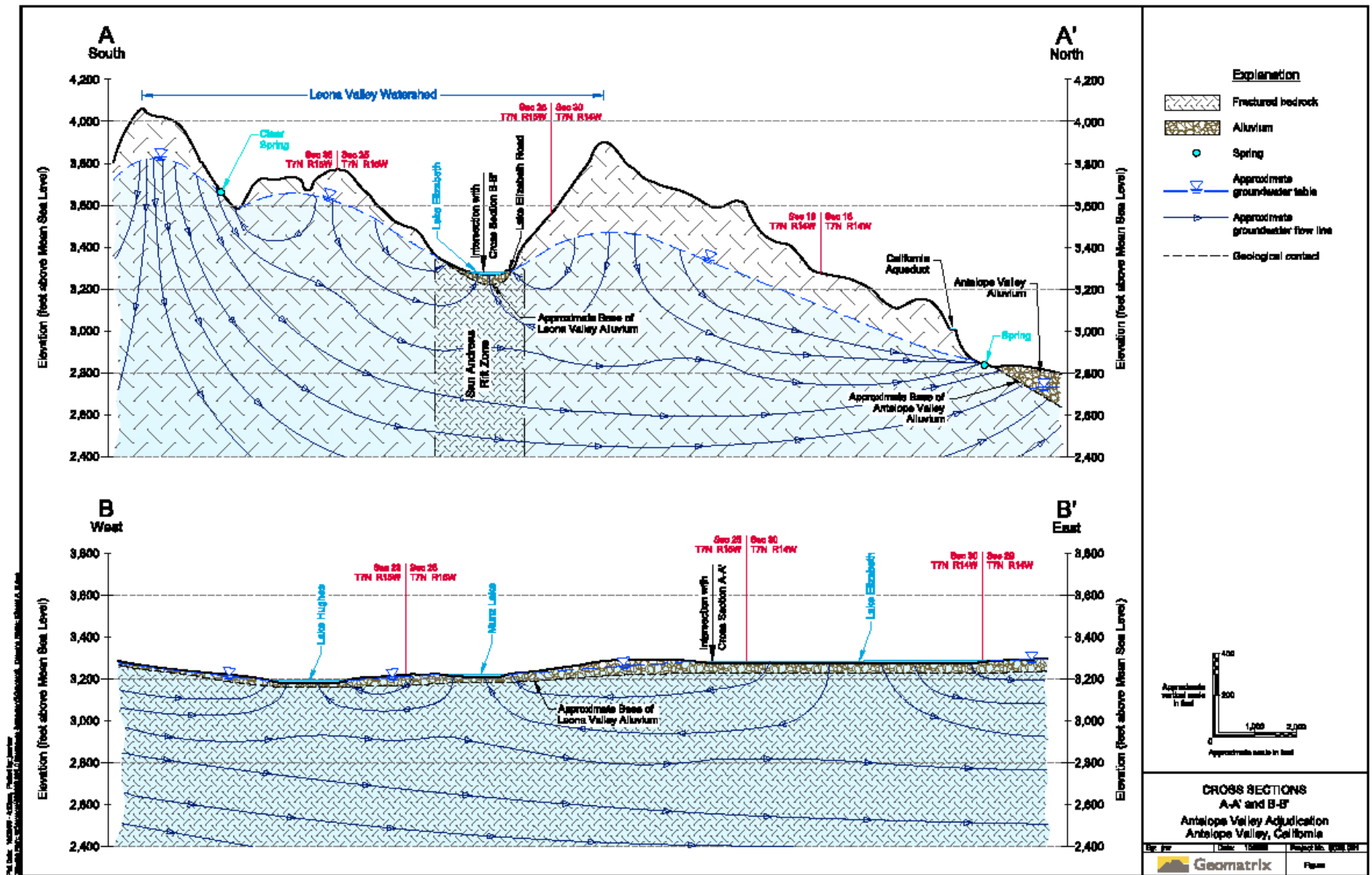
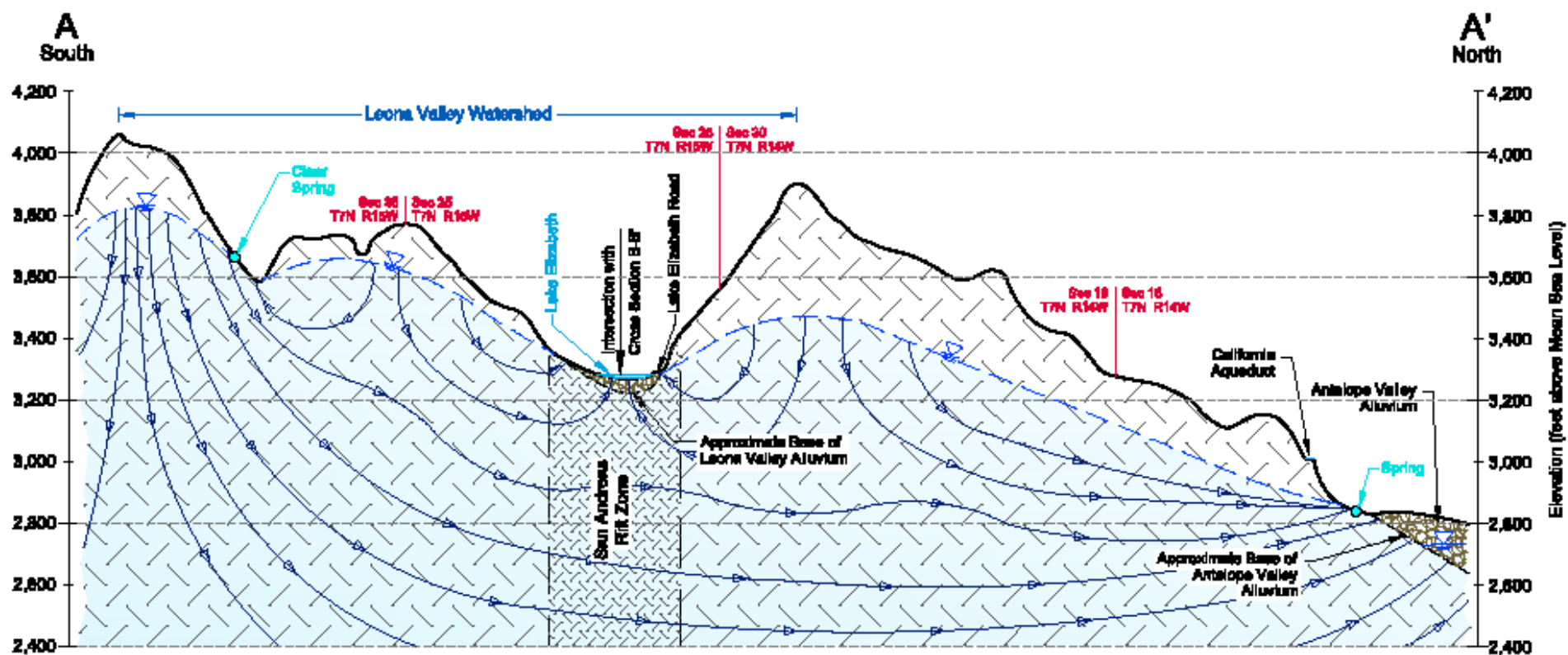
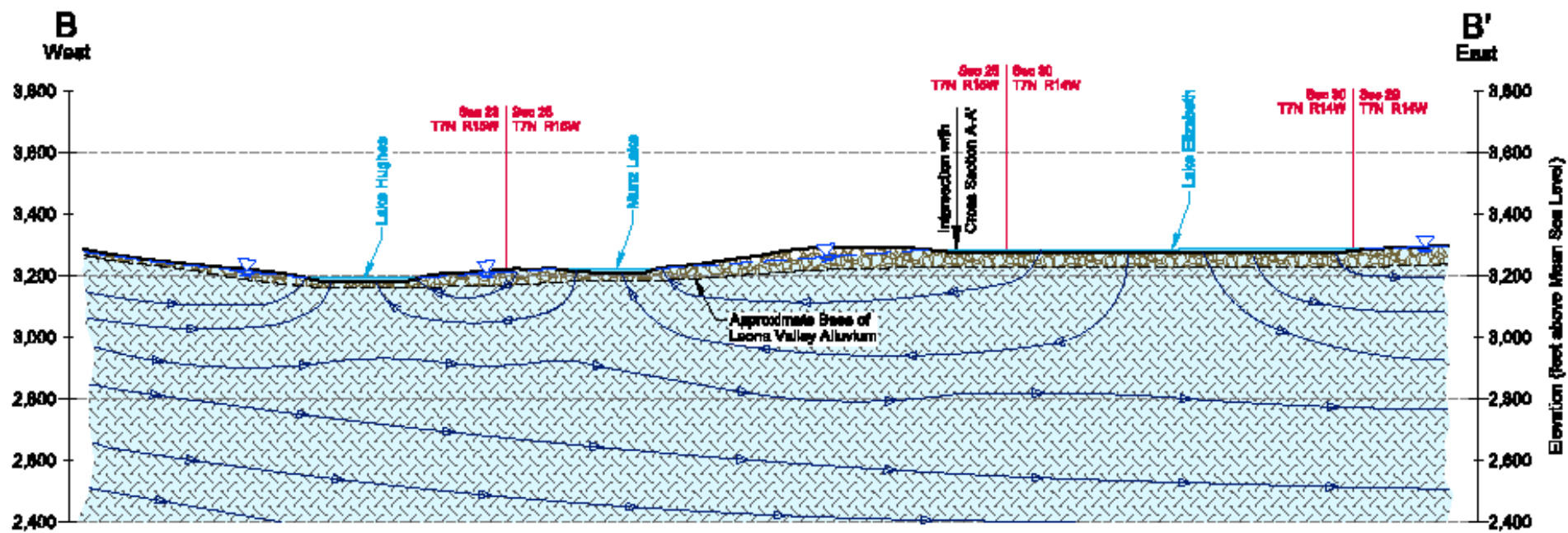


EXHIBIT NUMBER

108





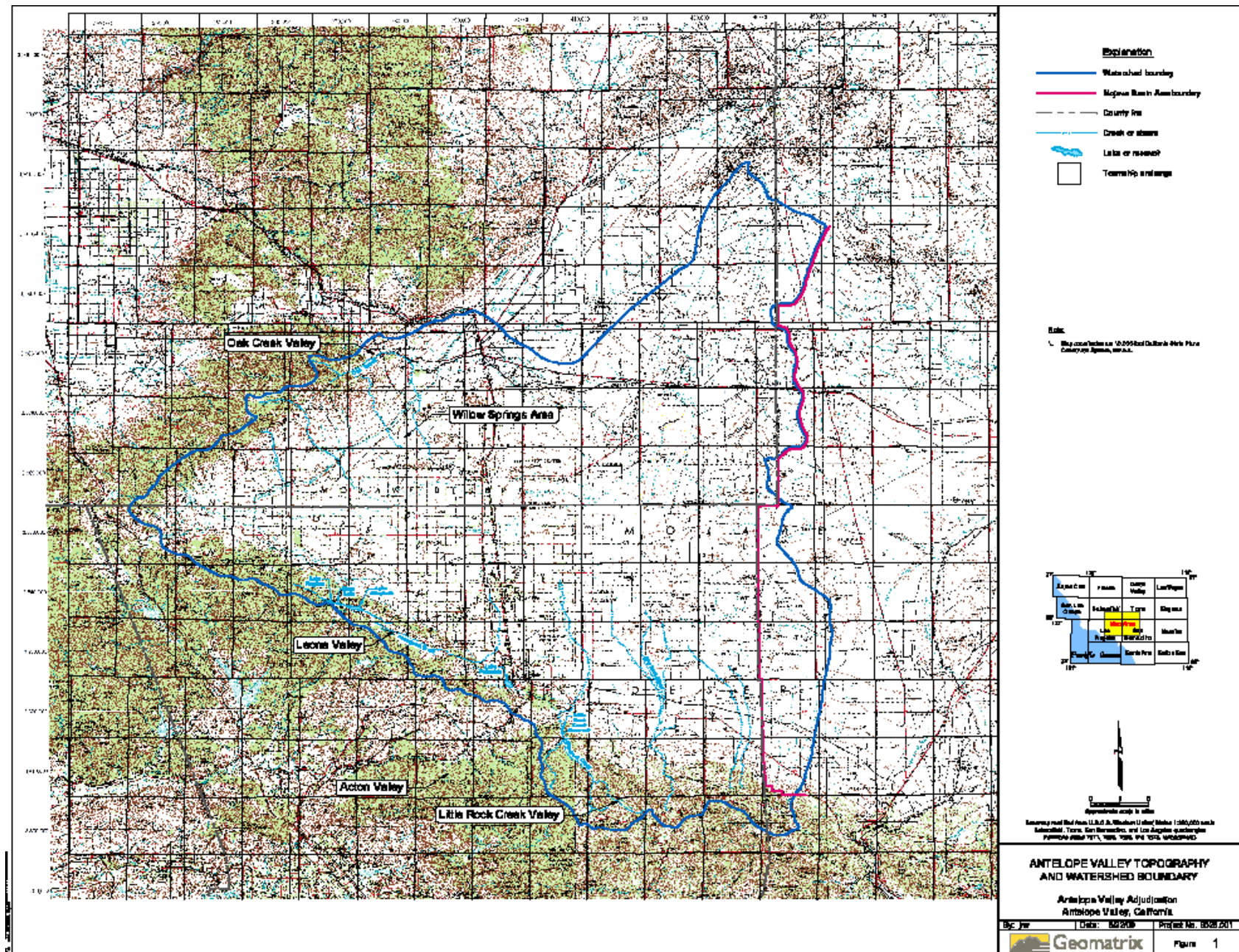
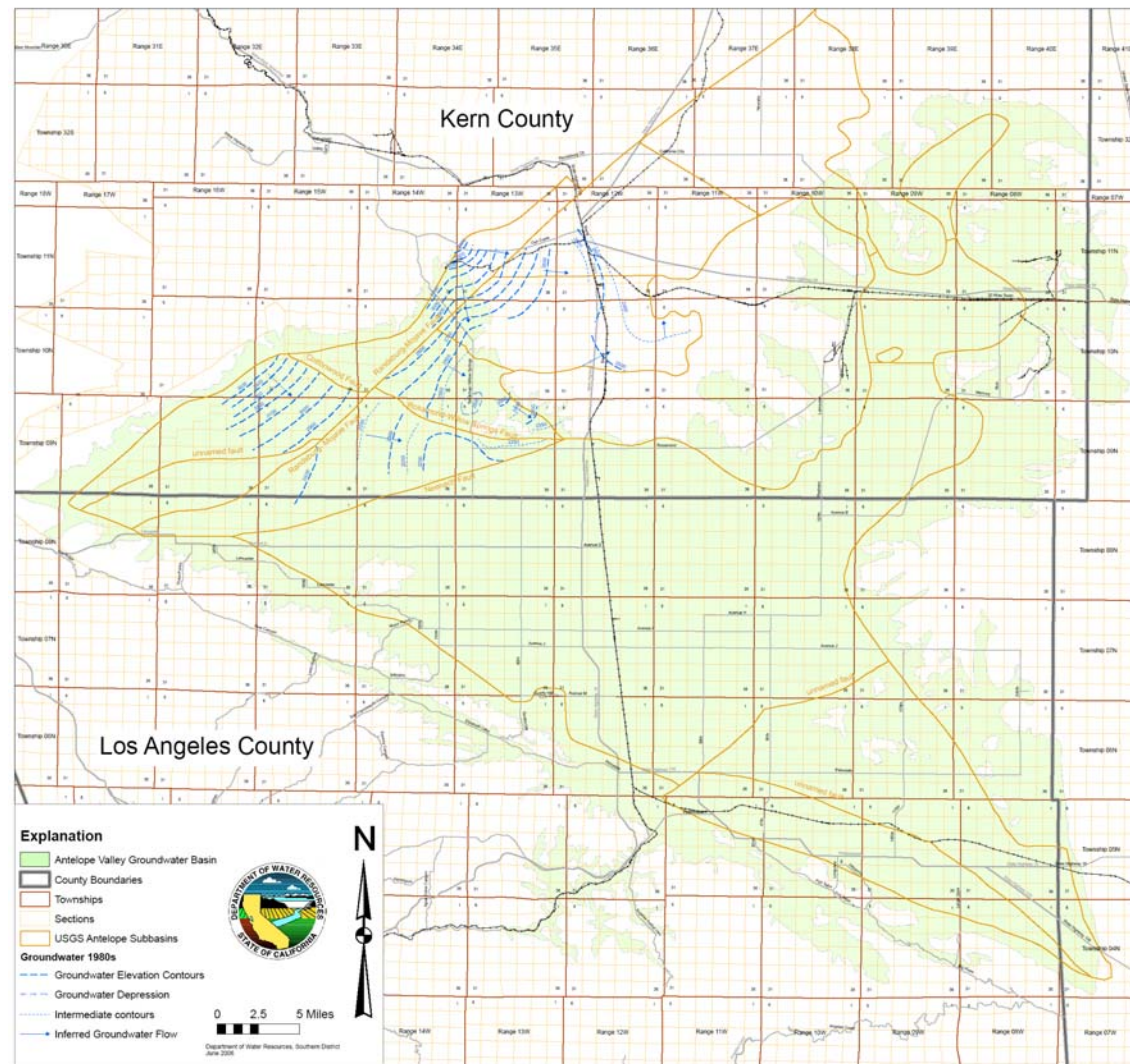


EXHIBIT NUMBER

Antelope Valley Groundwater Basin



This map was created generally using GIS shape files available through the State of California. Transportation layers were obtained from [www.gis.ca.gov/data.epi]. These source files are typically in Teale Albers projection. The original DWR Groundwater Basin file was obtained at [www.groundwater.water.ca.gov/bulletin118/basin_maps/index.cfm] in UTM 10, NAD27 projection. This shape file has been reprojected to UTM 11 NAD83. The USGS Antelope Valley Groundwater basin subunits shape file was provided by Dr. Peter Martin of the U.S. Geological Survey. Groundwater elevation contours are interpreted from water levels reported in the 1980s. This map is subject to change given the availability of additional information. California Department of Water Resources, Southern District, June 2006.

Exhibit 2:
Groundwater Elevation Contours
in Northwestern Antelope Valley

EXHIBIT NUMBER

112

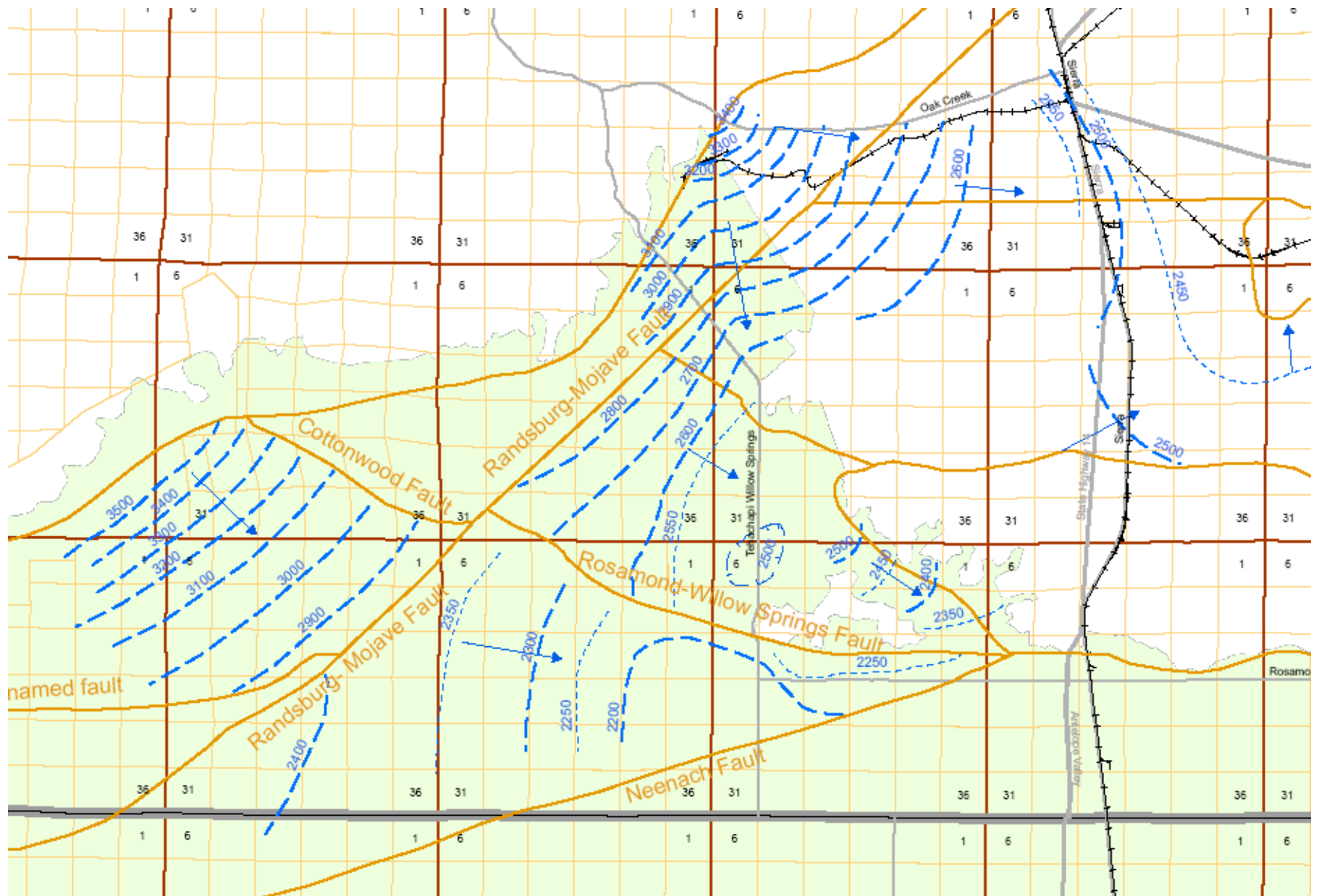


EXHIBIT NUMBER

113

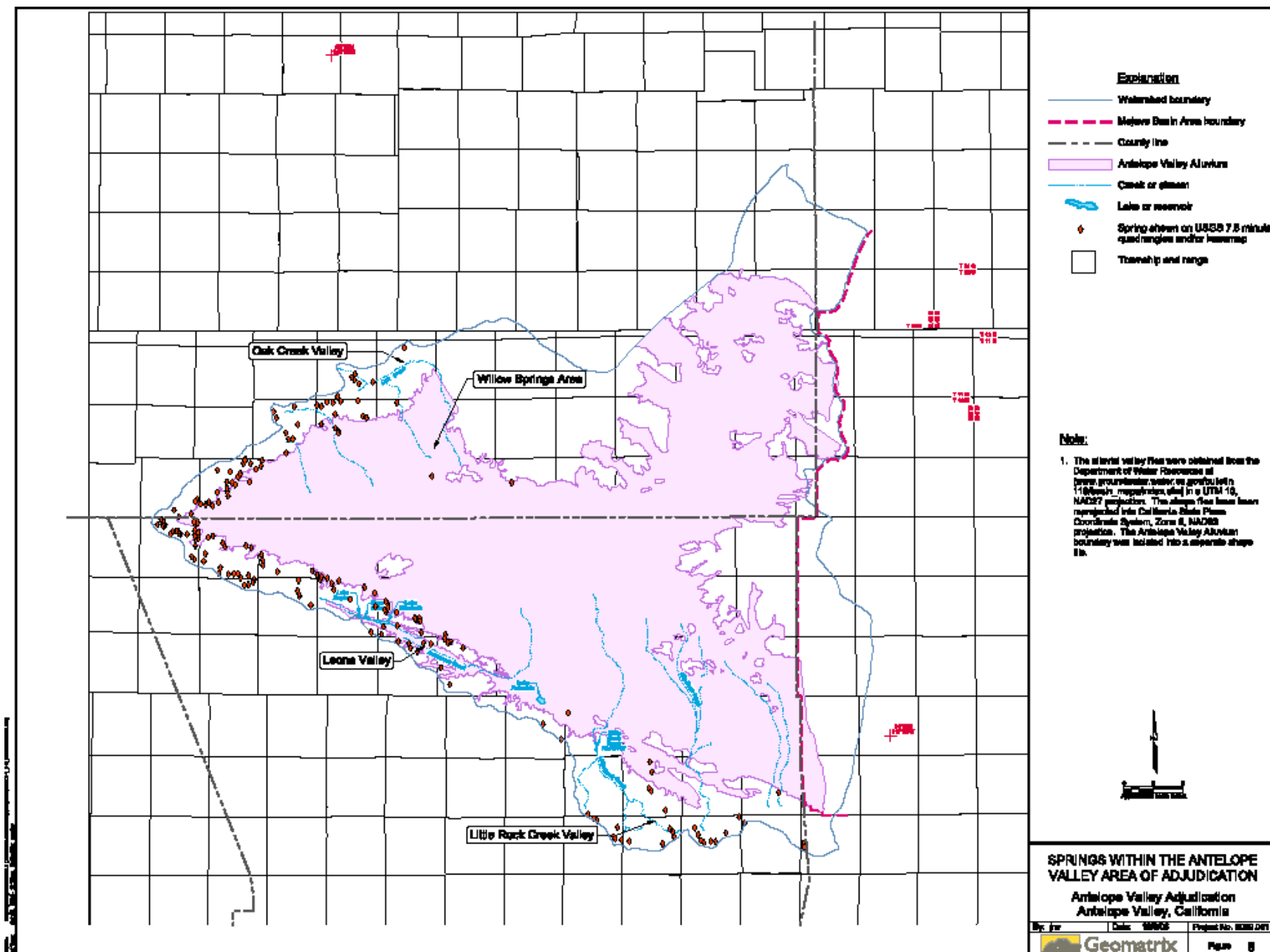
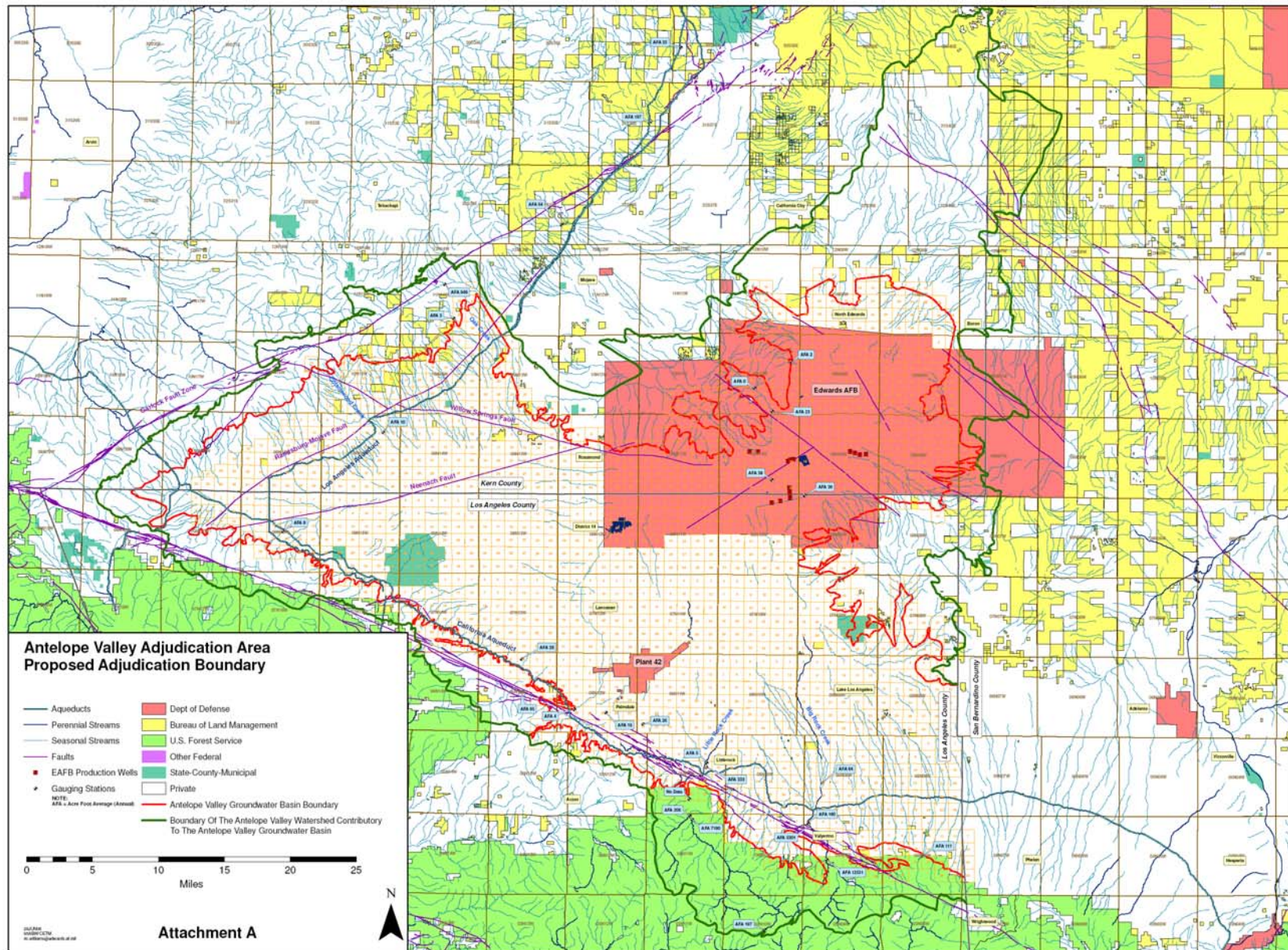


EXHIBIT NUMBER

114



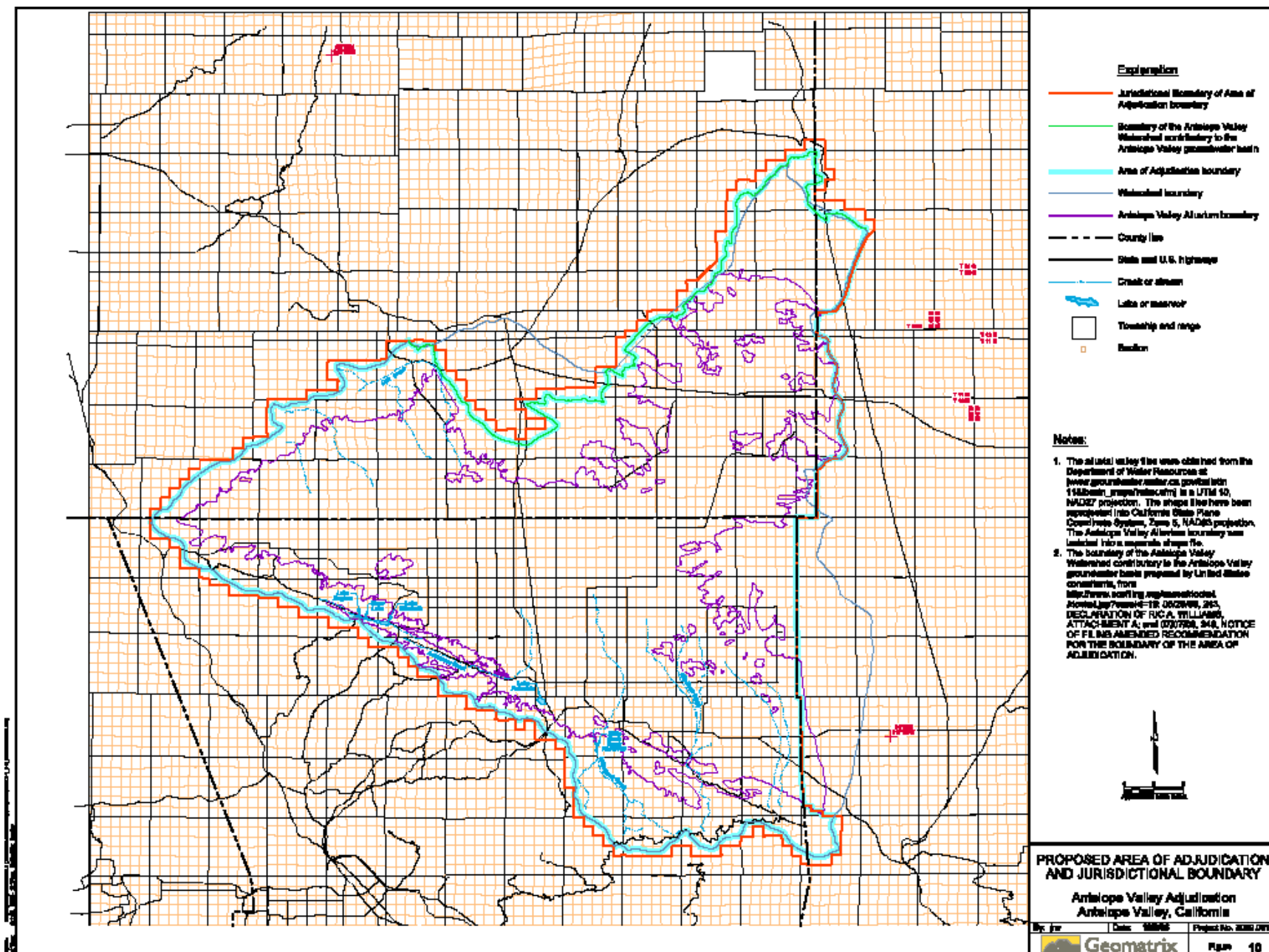


EXHIBIT NUMBER