

EXHIBIT B

Page 7 of 66 of Parcel Map 24419 and Record of Survey

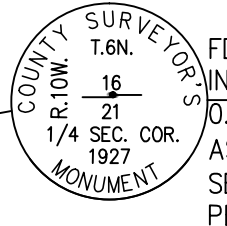
PARTLY IN THE CITY OF PALMDALE AND PARTLY IN THE UNINCORPORATED TERRITORY OF THE COUNTY OF LOS ANGELES, STATE OF CALIFORNIA

US AIR FORCE PLANT 42

N51°50'38"E
3684.32'

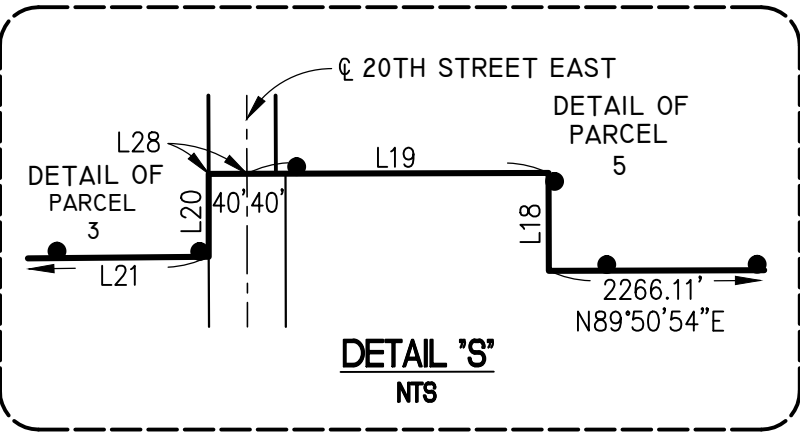
N89°4'24"E
247'

PC
16'


$$\frac{52.588.49'(\text{GROUND})}{0.97(\text{GID})} = 55.970.21' \quad \frac{\text{BASIS OF BEARINGS}}{\text{CSF} = 0.9998077744}$$

SC&GS STATION "PBPP"
NAD 83, ZONE 5)
E=2,007,343.0374
N=6,584,997.2303
HEATA ANGLE=0°02'38.916

- INDICATES THE BOUNDARY OF THE
LAND BEING SUBDIVIDED BY THIS MAP.
- ① - SEE SHEET 5 FOR FLOOD NOTE
- ② - SEE SHEET 5 FOR FLOOD NOTE
- ③ 300' MINIMUM POSSIBLE FUTURE RIGHT
OF WAY FOR STATE ROUTE 122



1"=400'

RECORD OF SURVEY

PARTLY IN THE CITY OF PALMDALE AND PARTLY IN
THE COUNTY OF LOS ANGELES, STATE OF CALIFORNIA

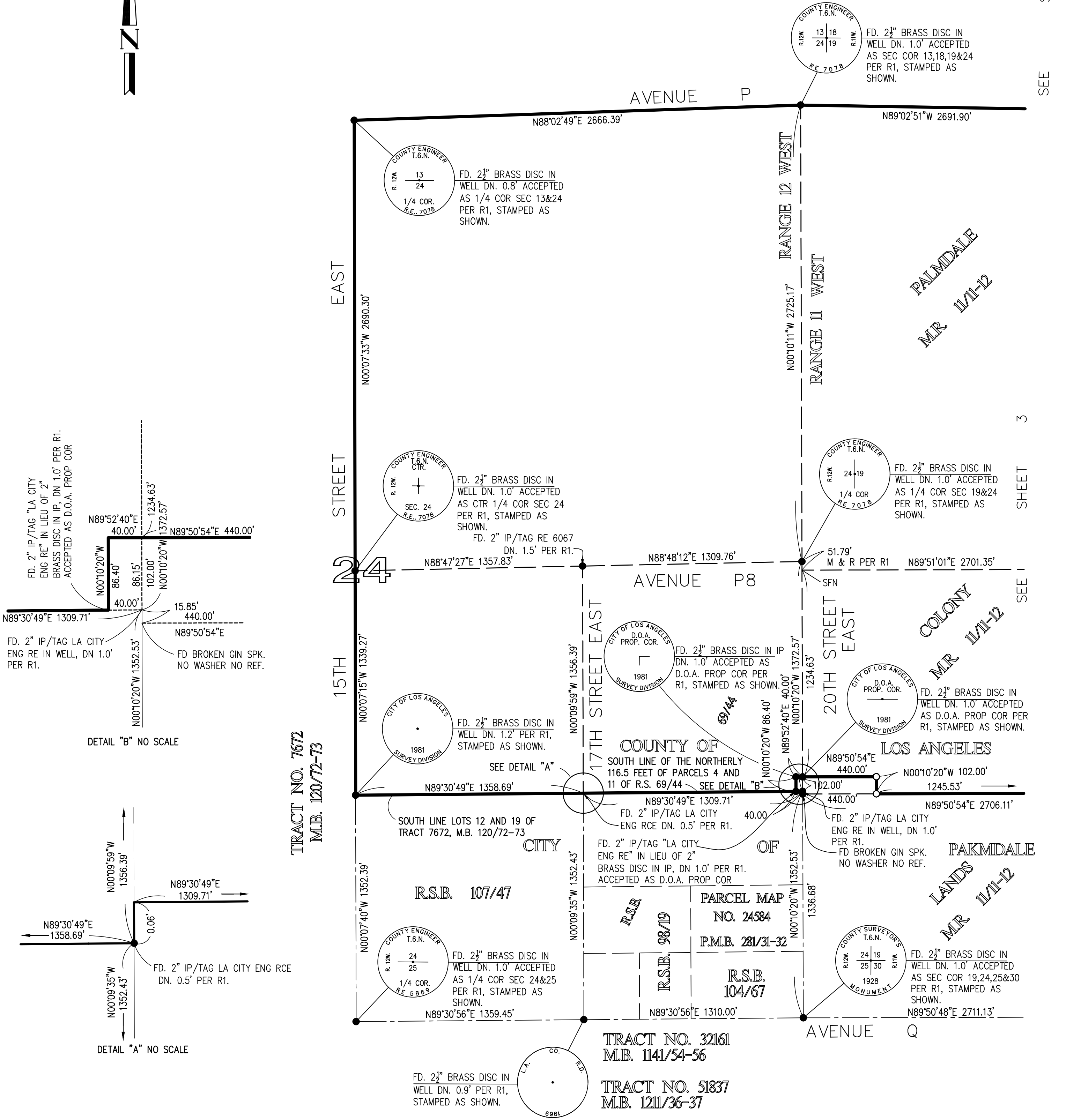
HALL & FOREMAN, INC.

STEVE SHAMBECK, L.S. 6217

NOVEMBER 2005



SEE SHEET 9



JOB NO. 0000-000
PLOT FILE NO. 00000

SHEET 3 OF 29

PARTLY IN THE CITY OF PALMDALE AND PARTLY IN
THE COUNTY OF LOS ANGELES, STATE OF CALIFORNIA

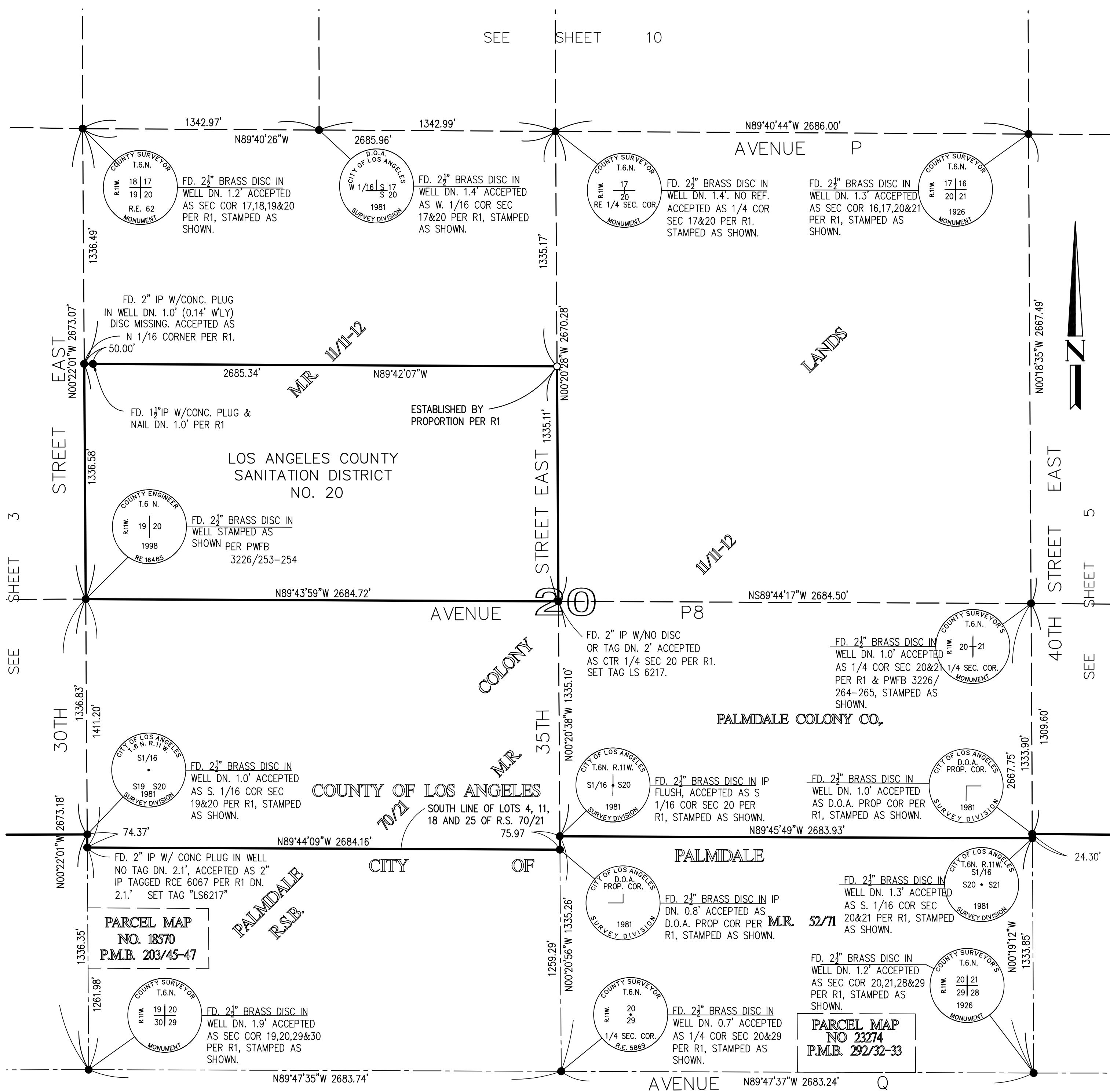
HALL & FOREMAN, INC. STEVE SHAMBECK, L.S. 6217
NOVEMBER 2005



SHEET 4 OF 29

PARTLY IN THE CITY OF PALMDALE AND PARTLY IN
THE COUNTY OF LOS ANGELES, STATE OF CALIFORNIA

HALL & FOREMAN, INC. STEVE SHAMBECK, L.S. 6217
NOVEMBER 2005



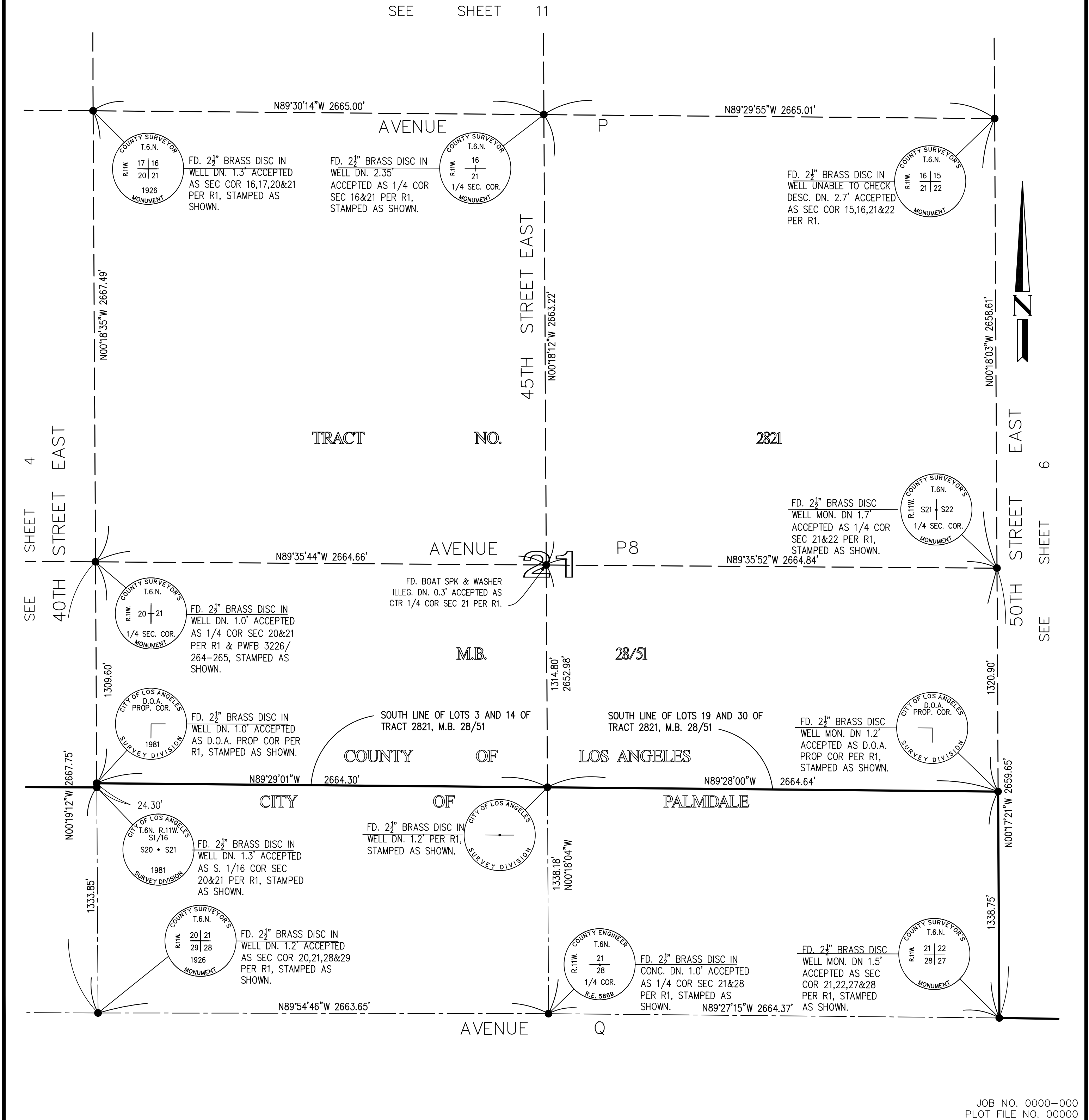
JOB NO. 04306-000
PLOT FILE NO. 00000

SCALE
1"=400'

SHEET 5 OF 29

RECORD OF SURVEY

PARTLY IN THE CITY OF PALMDALE AND PARTIALLY IN
THE COUNTY OF LOS ANGELES, STATE OF CALIFORNIA
HALL & FOREMAN, INC. STEVE SHAMBECK, L.S. 6217
NOVEMBER 2005



SHEET 6 OF 29

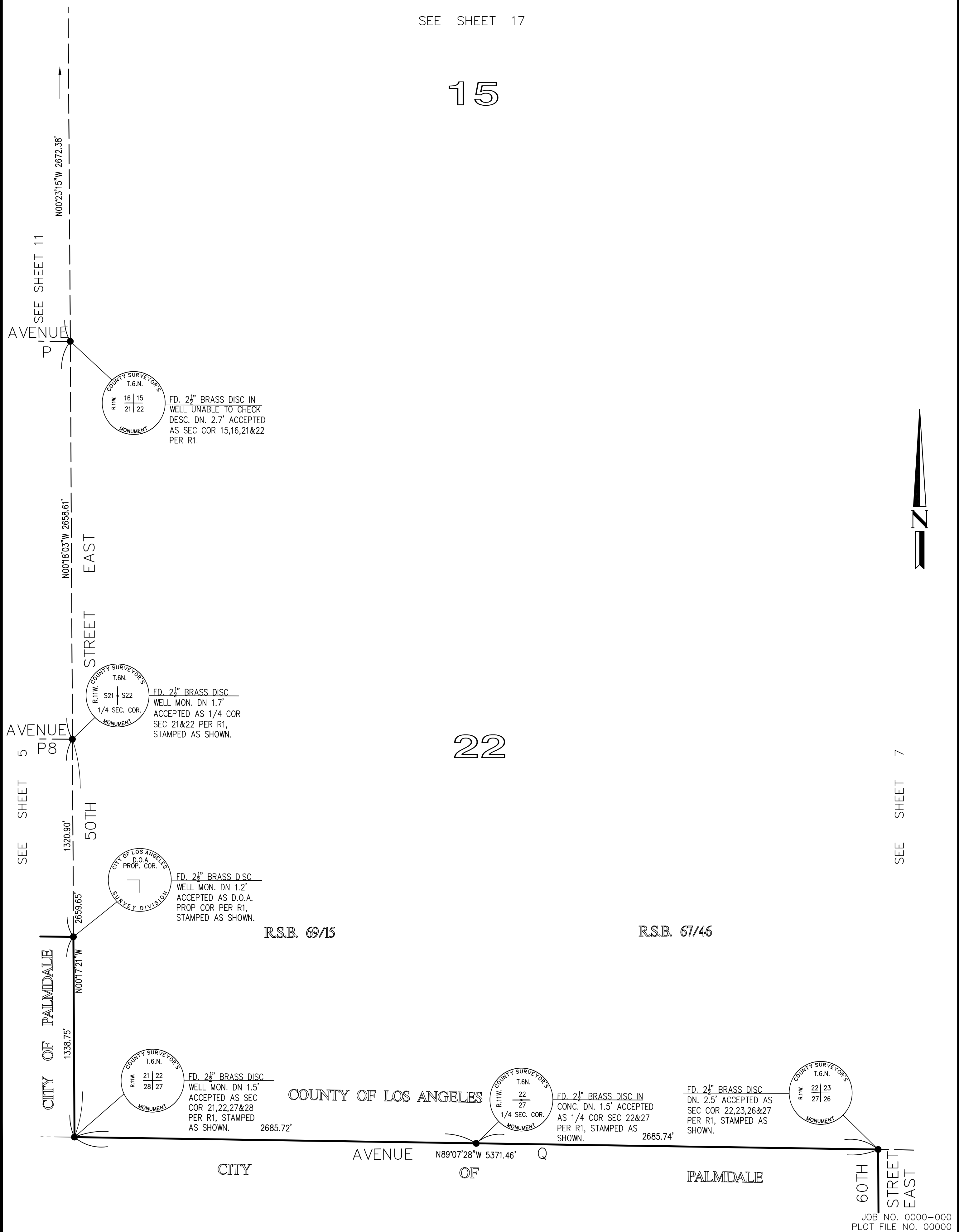
PARTLY IN THE CITY OF PALMDALE AND PARTLY IN
THE COUNTY OF LOS ANGELES, STATE OF CALIFORNIA

HALL & FOREMAN, INC. STEVE SHAMBECK, L.S. 6217
NOVEMBER 2005

SEE SHEET 17

15

22



SCALE
1"=400'

SHEET 7 OF 29

RECORD OF SURVEY

PARTLY IN THE CITY OF PALMDALE AND PARTLY IN
THE COUNTY OF LOS ANGELES, STATE OF CALIFORNIA

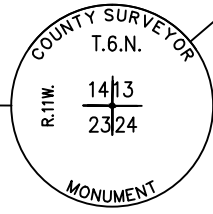
HALL & FOREMAN, INC.

STEVE SHAMBECK, L.S. 6217

NOVEMBER 2005

SEE SHEET 18

FD. 2 1/2" BRASS DISC IN
WELL DN. 1.0' ACCEPTED AS
1/4 COR SEC 13,14,23&24
PER CS 8738, STAMPED AS
SHOWN.

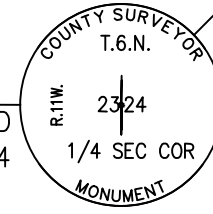


N00°33'50"W
2695.07'

N00°18'13"W 2647.64'

23

FD. 2 1/2" BRASS DISC IN
WELL DN. 2.2' ACCEPTED
AS 1/4 COR SEC 23&24
PER CS 8738, STAMPED
AS SHOWN.

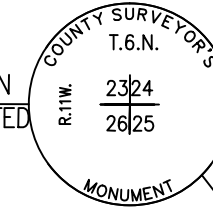


N00°18'21"W 2647.64'

70TH STREET EAST

N00°12'03"W 2663.78'

FD. 2 1/2" BRASS DISC IN
WELL DN. 1.6' ACCEPTED
AS SEC COR
23,24,25&26 PER CS
8738, STAMPED AS
SHOWN.



N88°57'54"W 2699.07'

AVENUE Q

N88°58'10"W 2699.27'

65TH STREET EAST

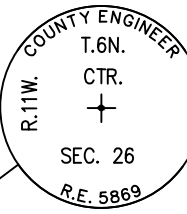
N00°15'13"W 2665.10'

26

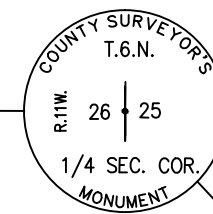
BOULEVARD

N88°59'30"W 2696.59'

FD. 2 1/2" BRASS DISC
IN WELL DN. 0.8'
ACCEPTED AS CTR 1/4
COR SEC 26 PER R1,
STAMPED AS SHOWN.



FD. 2 1/2" BRASS DISC IN
WELL DN. 1.9' ACCEPTED
AS 1/4 COR SEC 25&26
PER R1, STAMPED AS
SHOWN.



N88°59'21"W 2696.41'

COUNTY OF LOS ANGELES

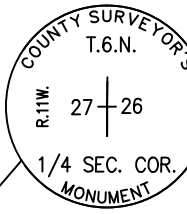
PALMDALE
OF

PALMDALE

CITY OF PALMDALE
60TH STREET EAST

N00°18'52"W 2666.10'

FD. 2 1/2" BRASS DISC IN
WELL. UNABLE TO READ.
DN. 3.5' ACCEPTED AS
1/4 COR SEC 26&27 PER
R1.



JOB NO. 0000-000
PLOT FILE NO. 00000

SCALE
1"=400'

SHEET 8 OF 29

RECORD OF SURVEY

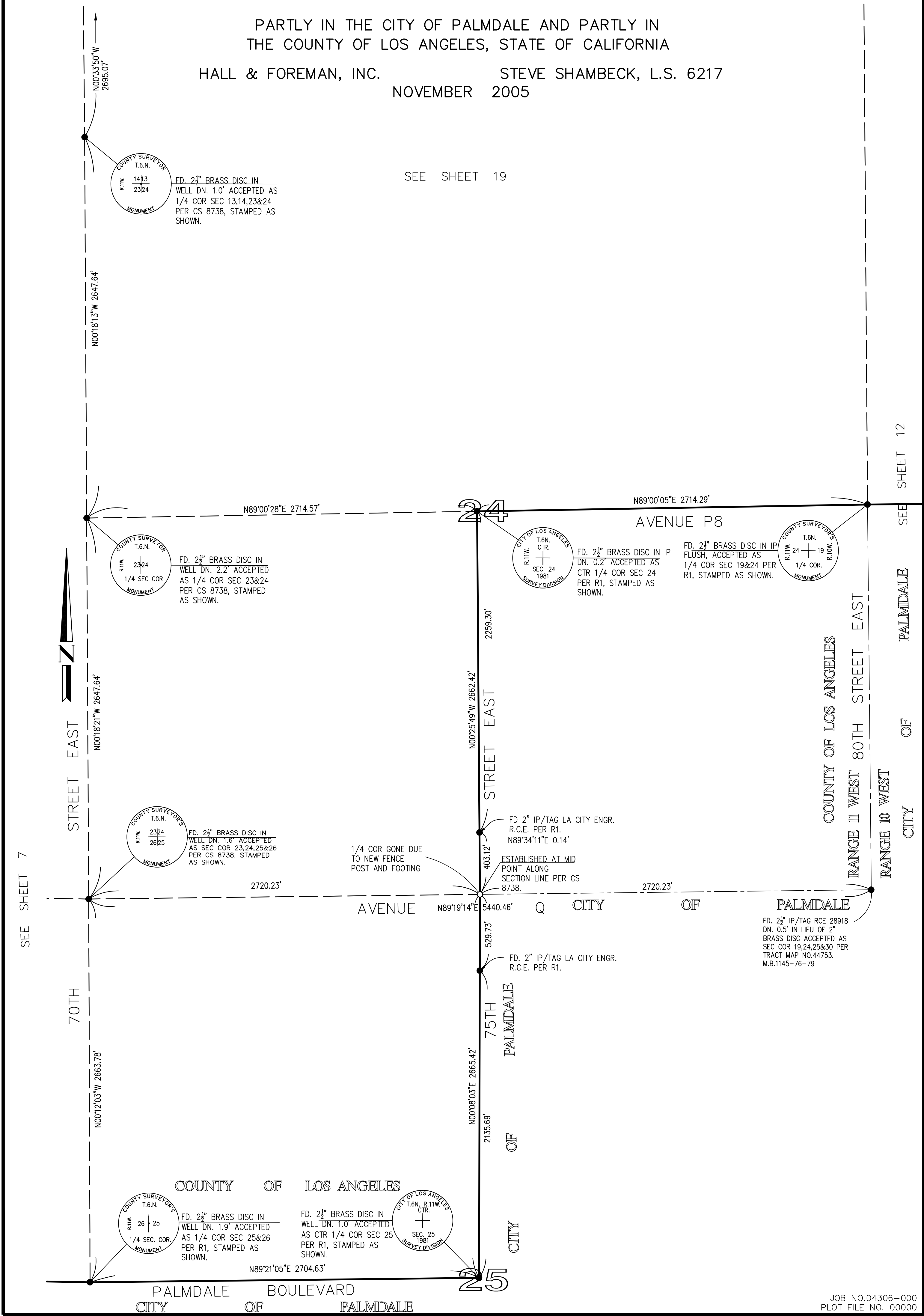
PARTLY IN THE CITY OF PALMDALE AND PARTLY IN
THE COUNTY OF LOS ANGELES, STATE OF CALIFORNIA

HALL & FOREMAN, INC.

STEVE SHAMBECK, L.S. 6217

NOVEMBER 2005

SEE SHEET 19



JOB NO.04306-000
PLOT FILE NO. 00000

SCALE
1"=400'

SHEET 9 OF 29

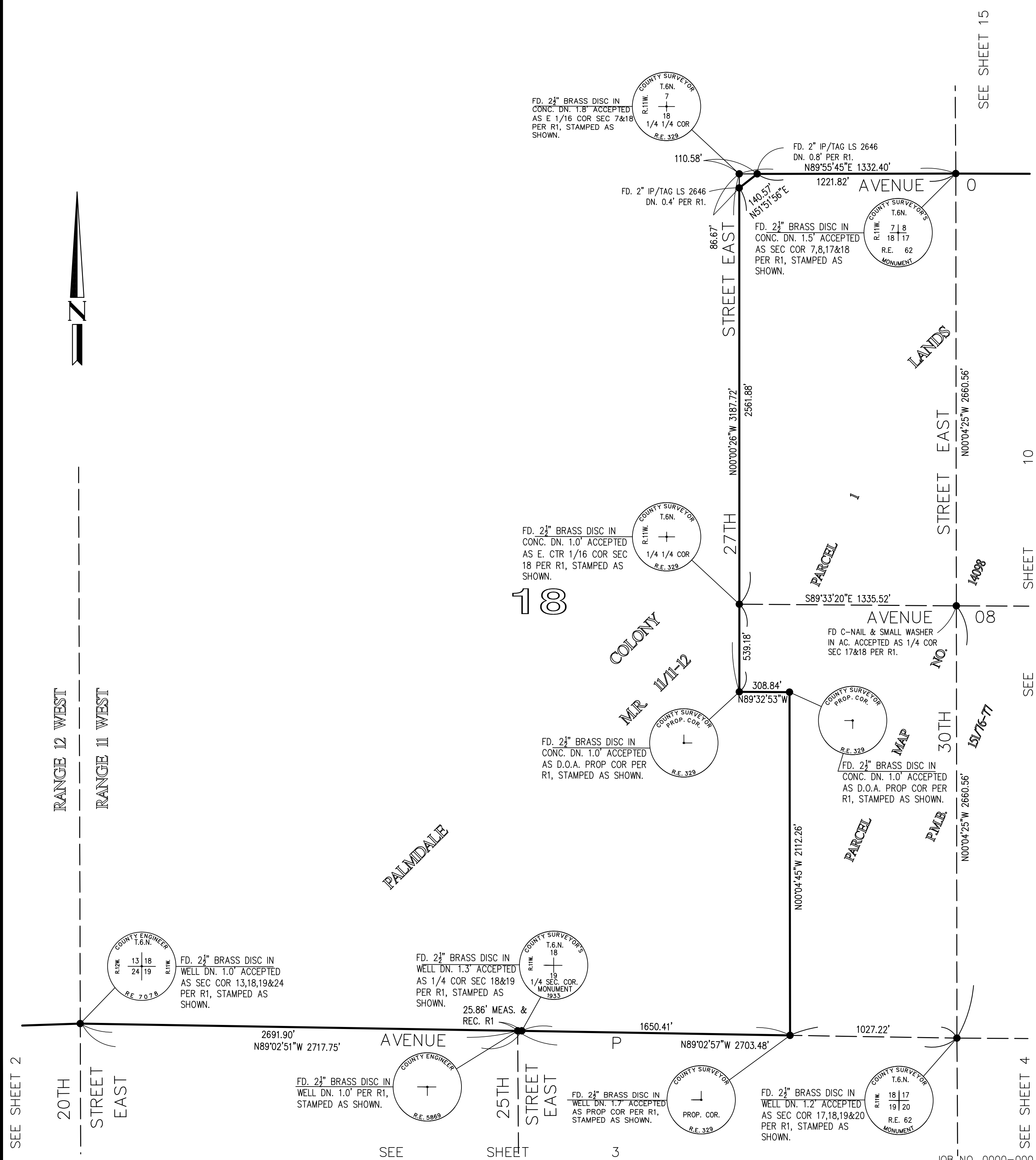
RECORD OF SURVEY

PARTLY IN THE CITY OF PALMDALE AND PARTLY IN
THE COUNTY OF LOS ANGELES, STATE OF CALIFORNIA

HALL & FOREMAN, INC.

STEVE SHAMBECK, L.S. 6217

NOVEMBER 2005



JOB NO. 0000-000
PLOT FILE NO. 00000

SCALE
1"=40'

SHEET 10 OF 29

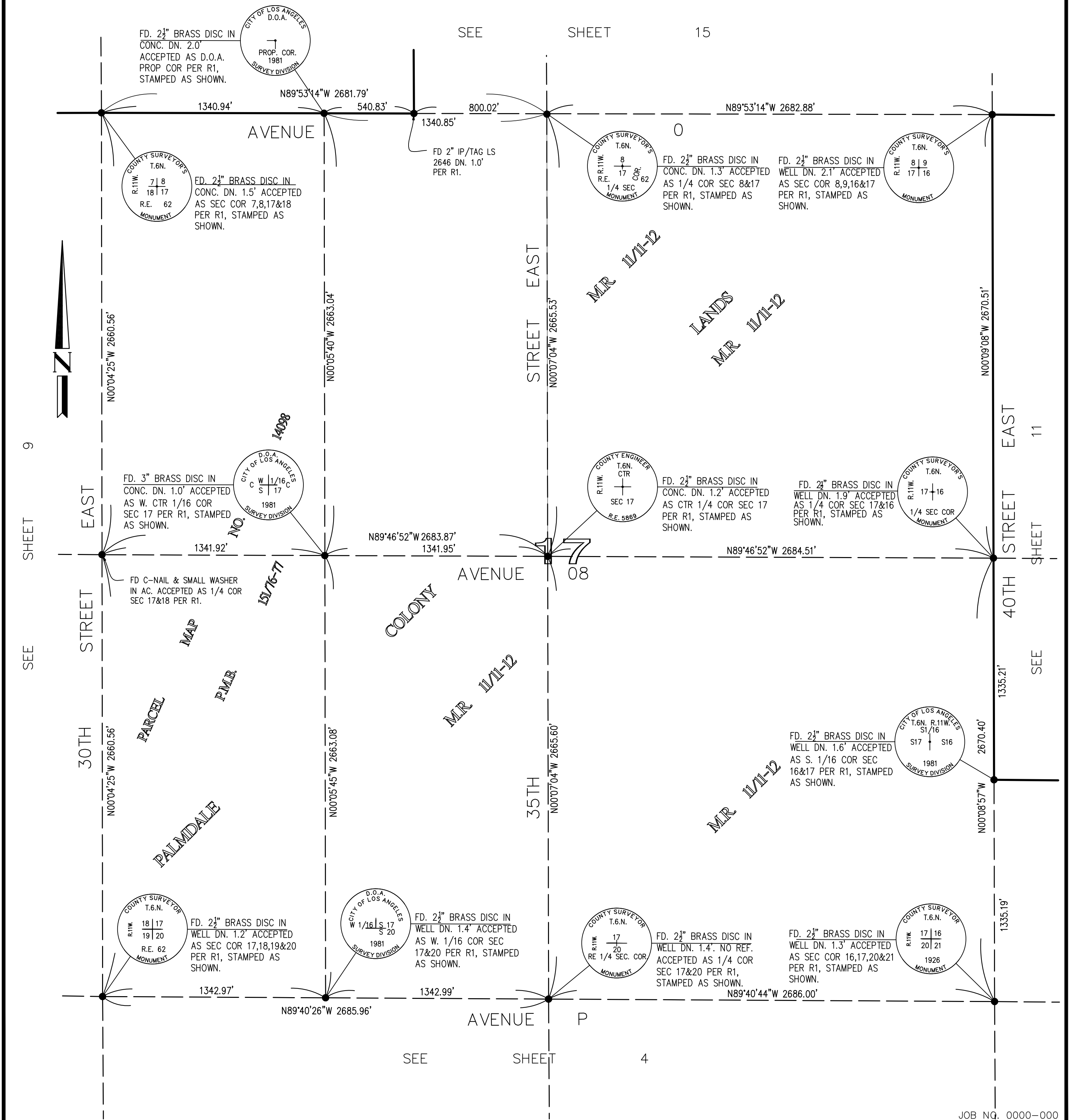
RECORD OF SURVEY

PARTLY IN THE CITY OF PALMDALE AND PARTLY IN
THE COUNTY OF LOS ANGELES, STATE OF CALIFORNIA

HALL & FOREMAN, INC.

STEVE SHAMBECK, L.S. 6217

NOVEMBER 2005



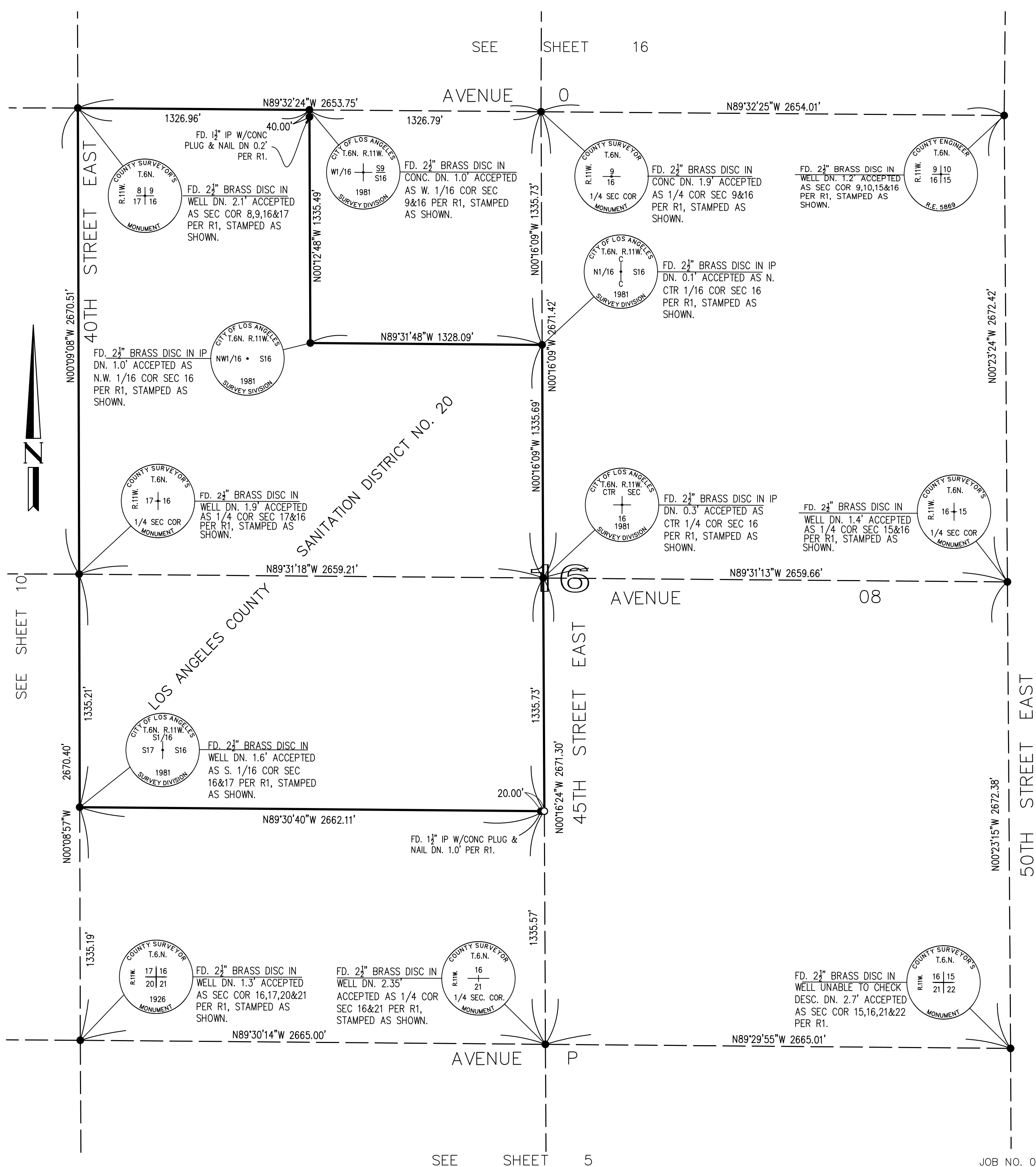
JOB NO. 0000-000
PLOT FILE NO. 0430600000

SHEET 11 OF 29

PARTLY IN THE CITY OF PALMDALE AND PARTLY IN
THE COUNTY OF LOS ANGELES, STATE OF CALIFORNIA

STEVE SHAMBECK, L.S. 6217

NOVEMBER 2005



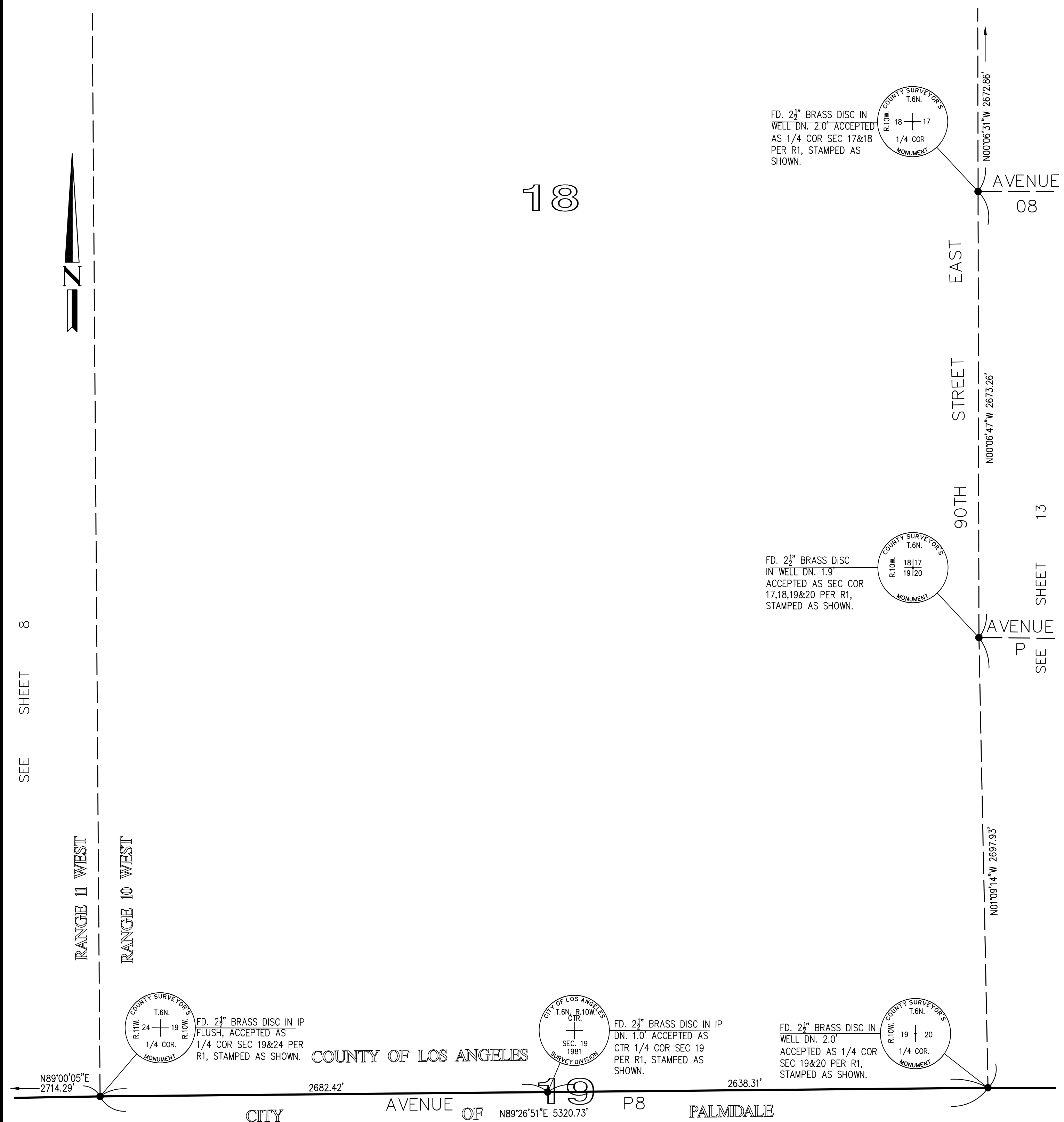
JOB NO. 04306-000
PLOT FILE NO. 00000

SHEET 12 OF 29

PARTLY IN THE CITY OF PALMDALE AND PARTLY IN
THE COUNTY OF LOS ANGELES, STATE OF CALIFORNIA

HALL & FOREMAN, INC. STEVE SHAMBECK, L.S. 6217
NOVEMBER 2005

SEE SHEET 20



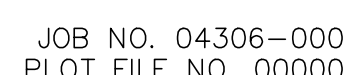
JOB NO. 0000-000
PLOT FILE NO. 00000

SHEET 13 OF 29

PARTLY IN THE CITY OF PALMDALE AND PARTLY IN
THE COUNTY OF LOS ANGELES, STATE OF CALIFORNIA

STEVE SHAMBECK, L.S. 6217

NOVEMBER 2005



SCALE
1"=400'

SHEET 14 OF 29 SHEETS

RECORD OF SURVEY

PARTLY IN THE CITY OF PALMDALE AND PARTLY IN
THE COUNTY OF LOS ANGELES, STATE OF CALIFORNIA

HALL & FOREMAN, INC.

STEVE SHAMBECK, L.S. 6217

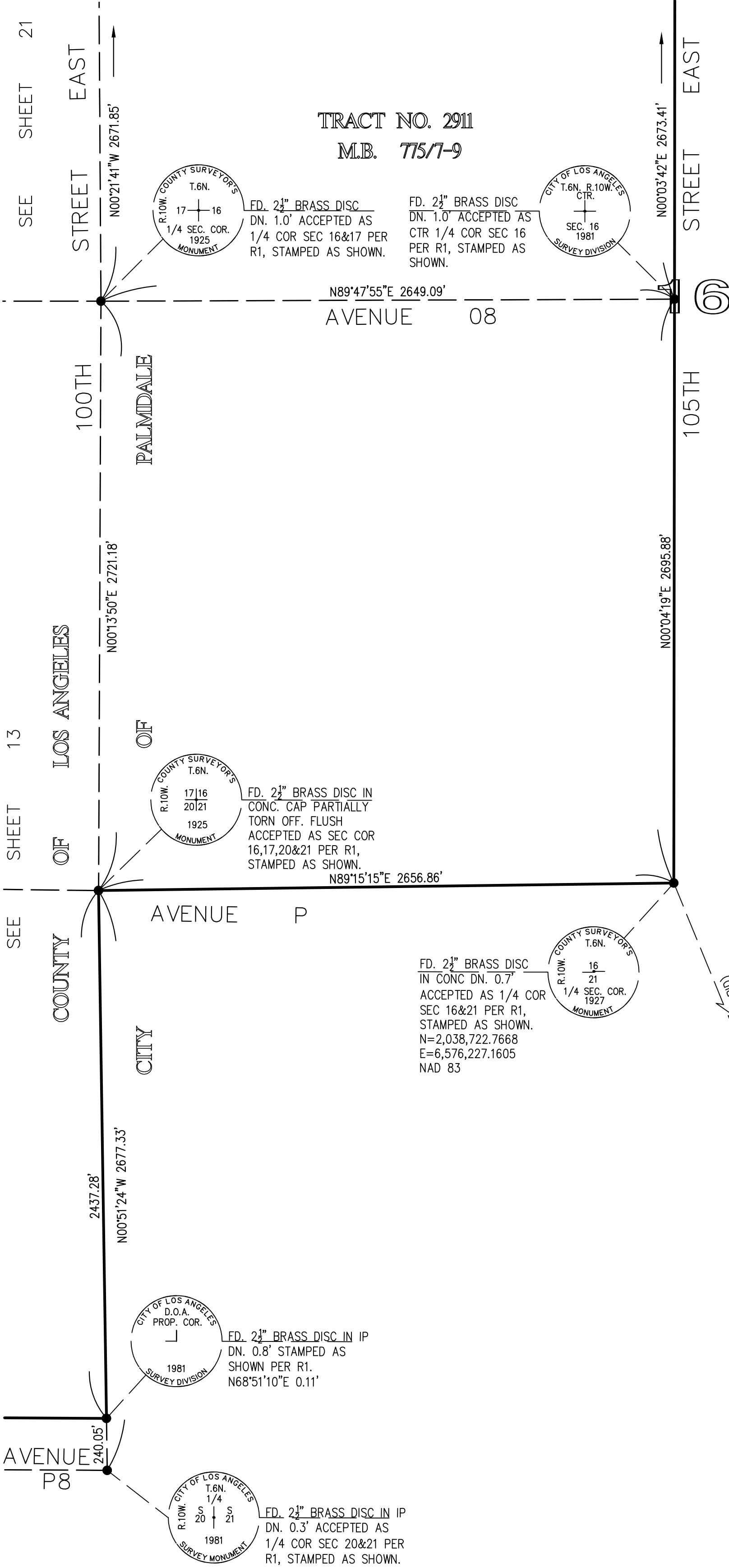
NOVEMBER 2005

USG&GS STATION "CHMS"
(NAD 83, ZONE 5)
N=2,055,502.3623
E=6,613,495.2903

4
S88°50'58"W 34,704.49' (GROUND) 34,697.80, (GRID)
CITY OF LOS ANGELES
T.6N., R.10W., E.5
CTR.
FD. 2 1/2" BRASS DISC
IN CONC DN. 2.0'
ACCEPTED AS CTR 1/4
COR SEC 4 PER R1,
STAMPED AS SHOWN.
SEC. 4
1981
SURVEY DIVISION

SEE SHEET 22

SEE SHEET 29



N30°36'33"E 55,970.21' (GROUND) 55,959.45' (GRID)
BASIS OF BEARINGS
CSF = 0.99980777



1"=400'

USG&GS STATION "PBPP"
(NAD 83, ZONE 5)
N=2,007,343.0374
E=6,584,997.2303
THETA ANGLE = 0°02'38.916"

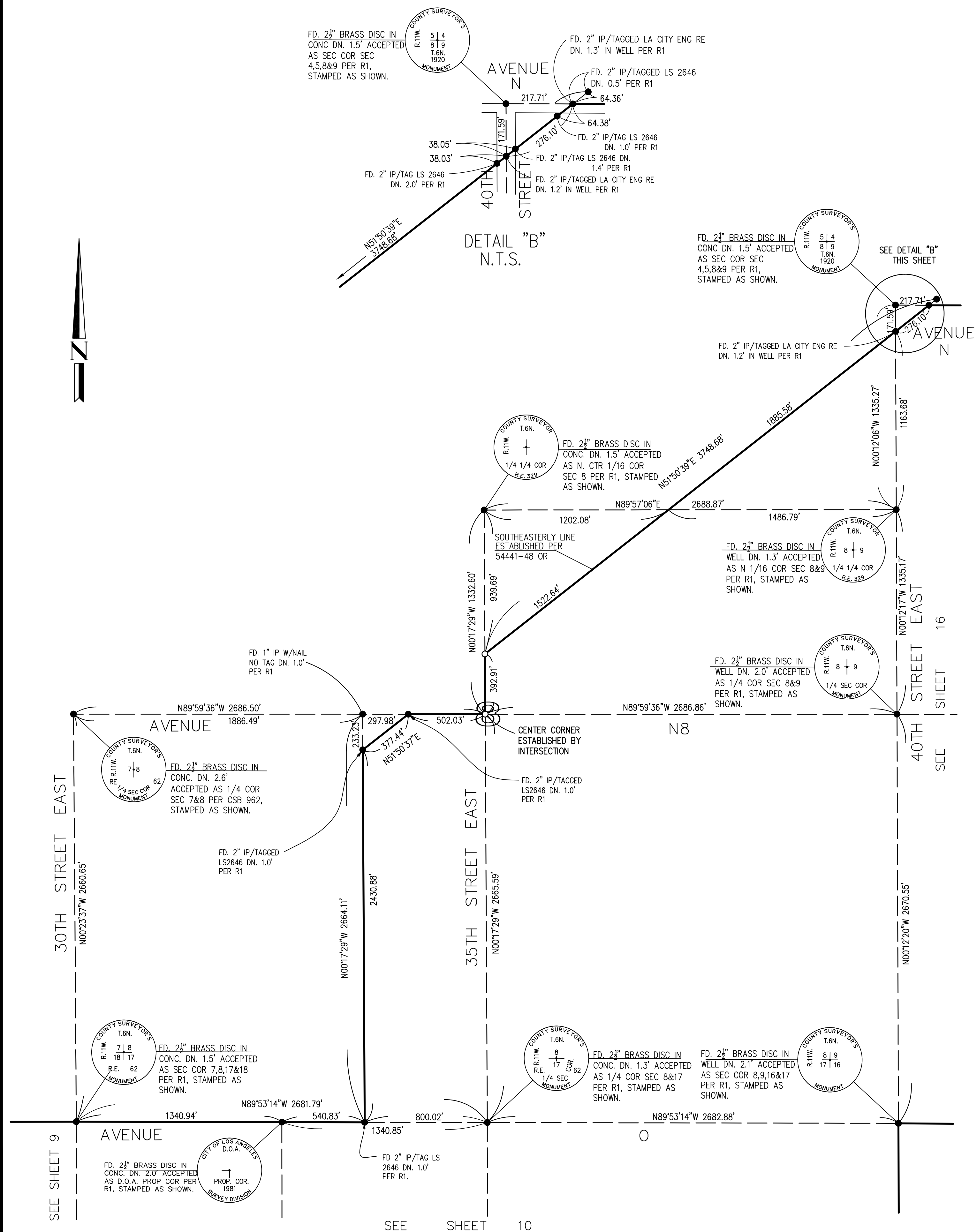
JOB NO. 04306-000
PLOT FILE NO. 00000

SHEET 15 OF 29

PARTLY IN THE CITY OF PALMDALE AND PARTLY IN
THE COUNTY OF LOS ANGELES, STATE OF CALIFORNIA

STEVE SHAMBECK, L.S. 6217

NOVEMBER 2005

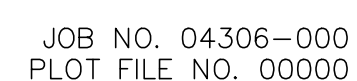


JOB NO. 04306-000
PLOT FILE NO. 00000

SHEET 16 OF 29

PARTLY IN THE CITY OF PALMDALE AND PARTLY IN
THE COUNTY OF LOS ANGELES, STATE OF CALIFORNIA

HALL & FOREMAN, INC. STEVE SHAMBECK, L.S. 6217
NOVEMBER 2005



SCALE
1"=400'

SHEET 17 OF 29

RECORD OF SURVEY

PARTLY IN THE CITY OF PALMDALE AND PARTLY IN
THE COUNTY OF LOS ANGELES, STATE OF CALIFORNIA

HALL & FOREMAN, INC.

STEVE SHAMBECK, L.S. 6217

NOVEMBER 2005

SEE SHEET 24

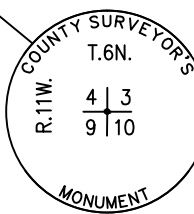
N89°42'47"W 5268.32'

AVENUE

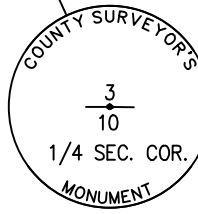
N

2634.21'

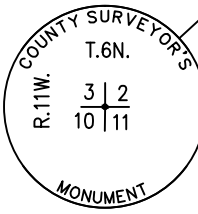
2634.11'



FD. 2 1/2" BRASS DISC
IN WELL DN. 1.4'
ACCEPTED AS SEC COR
3,4,9&10 PER R1,
STAMPED AS SHOWN.

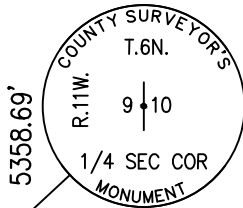


FD. 2 1/2" BRASS DISC
DN. 1.7" ACCEPTED AS
1/4 COR SEC 3&10 PER
CS 8738, STAMPED AS
SHOWN.



FD. 2 1/2" BRASS DISC
DN. 2.3' ACCEPTED AS
SEC COR 2,3,10&11 PER
R1, STAMPED AS SHOWN.

2679.34'

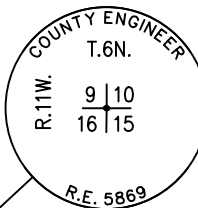


2 1/2" BRASS DISC IN WELL
DN. 1.4' ACCEPTED AS
1/4 COR SEC 9&10 PER
R1, STAMPED AS SHOWN.

N00°32'56"E

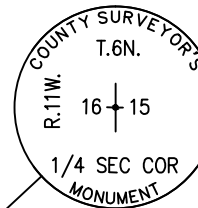
2679.35'

50TH



FD. 2 1/2" BRASS DISC IN
WELL DN. 1.2" ACCEPTED
AS SEC COR 9,10,15&16
PER R1, STAMPED AS
SHOWN.

N00°23'24"W 2672.42'



FD. 2 1/2" BRASS DISC IN
WELL DN. 1.4" ACCEPTED
AS 1/4 COR SEC 15&16
PER R1, STAMPED AS
SHOWN.

N00°23'15"W 2672.38'

10



SEE SHEET 18

15

SEE SHEET 6

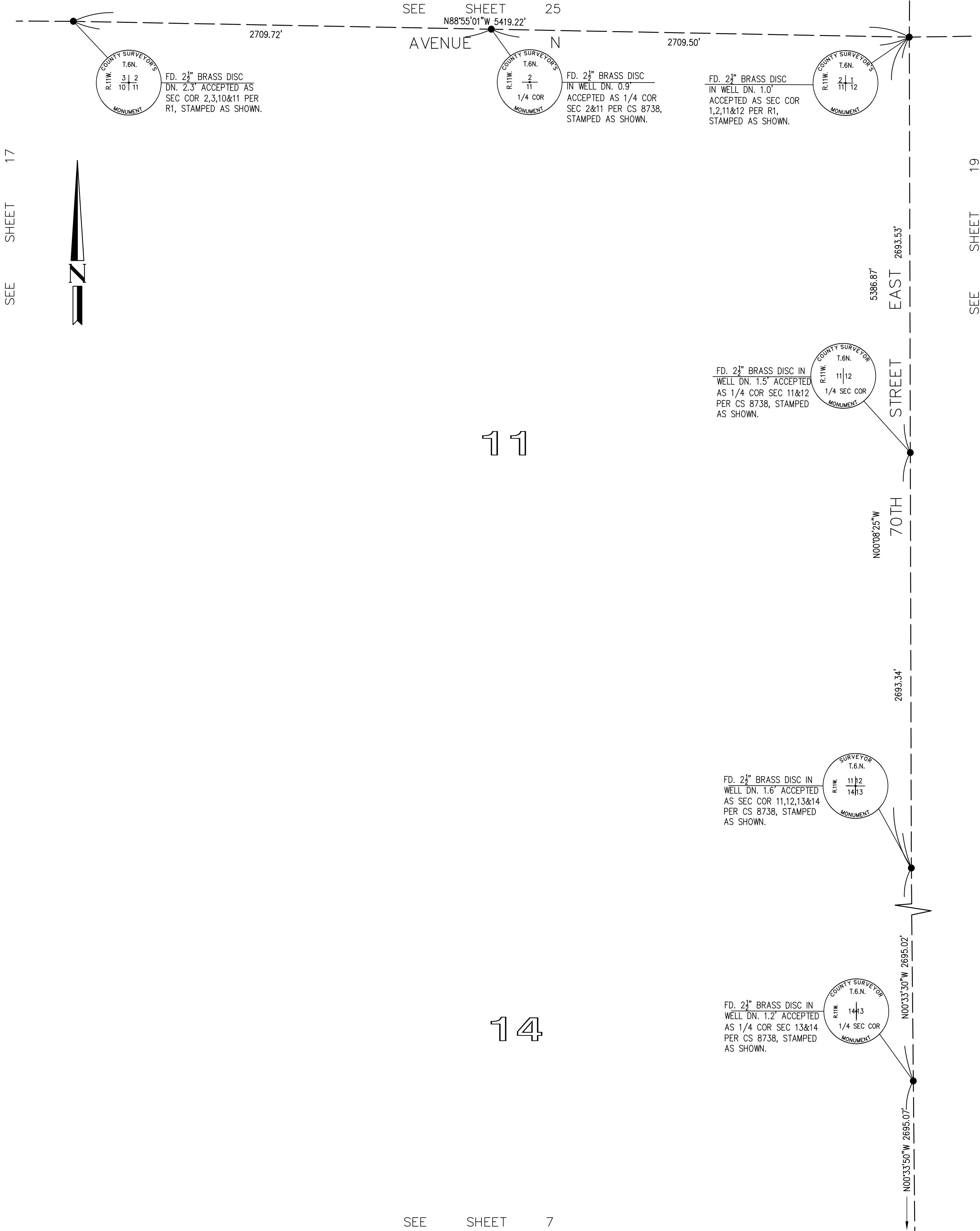
JOB NO. 04306-000
PLOT FILE NO. 00000

SCALE
1"=400'

SHEET 18 OF 29

RECORD OF SURVEY

PARTLY IN THE CITY OF PALMDALE AND PARTLY IN
THE COUNTY OF LOS ANGELES, STATE OF CALIFORNIA
HALL & FOREMAN, INC. STEVE SHAMBECK, L.S. 6217
NOVEMBER 2005



JOB NO. 04306-000
PLOT FILE NO. 00000

SHEET 19 OF 29

PARTLY IN THE CITY OF PALMDALE AND PARTLY IN
THE COUNTY OF LOS ANGELES, STATE OF CALIFORNIA
HALL & FOREMAN, INC. STEVE SHAMBECK, L.S. 6217
NOVEMBER 2005

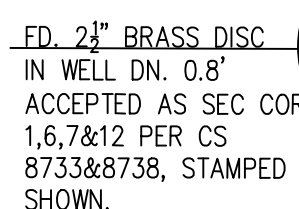
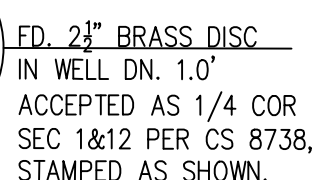
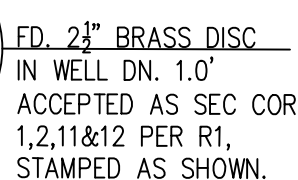
R.S.B. 74/41

SEE SHEET 26

N89°07'40"E 2706.52'

AVENUE N

N89°07'53"E 2705.82'



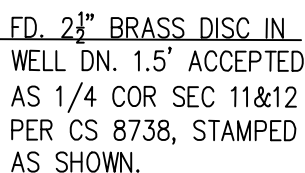
SEE SHEET 18

STREET EAST

2693.53'

70TH

N00°08'25"W 5386.87'



TRACT NO. 8597

12

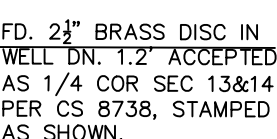
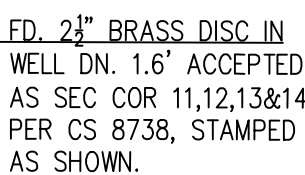
M.B. 106/22

RANGE 11 WEST

RANGE 10 WEST



SEE SHEET 20



13

SEE SHEET 8

N00°33'30"W 2695.02'

N00°33'50"W
2695.07'

JOB NO. 04306-000
PLOT FILE NO. 00000

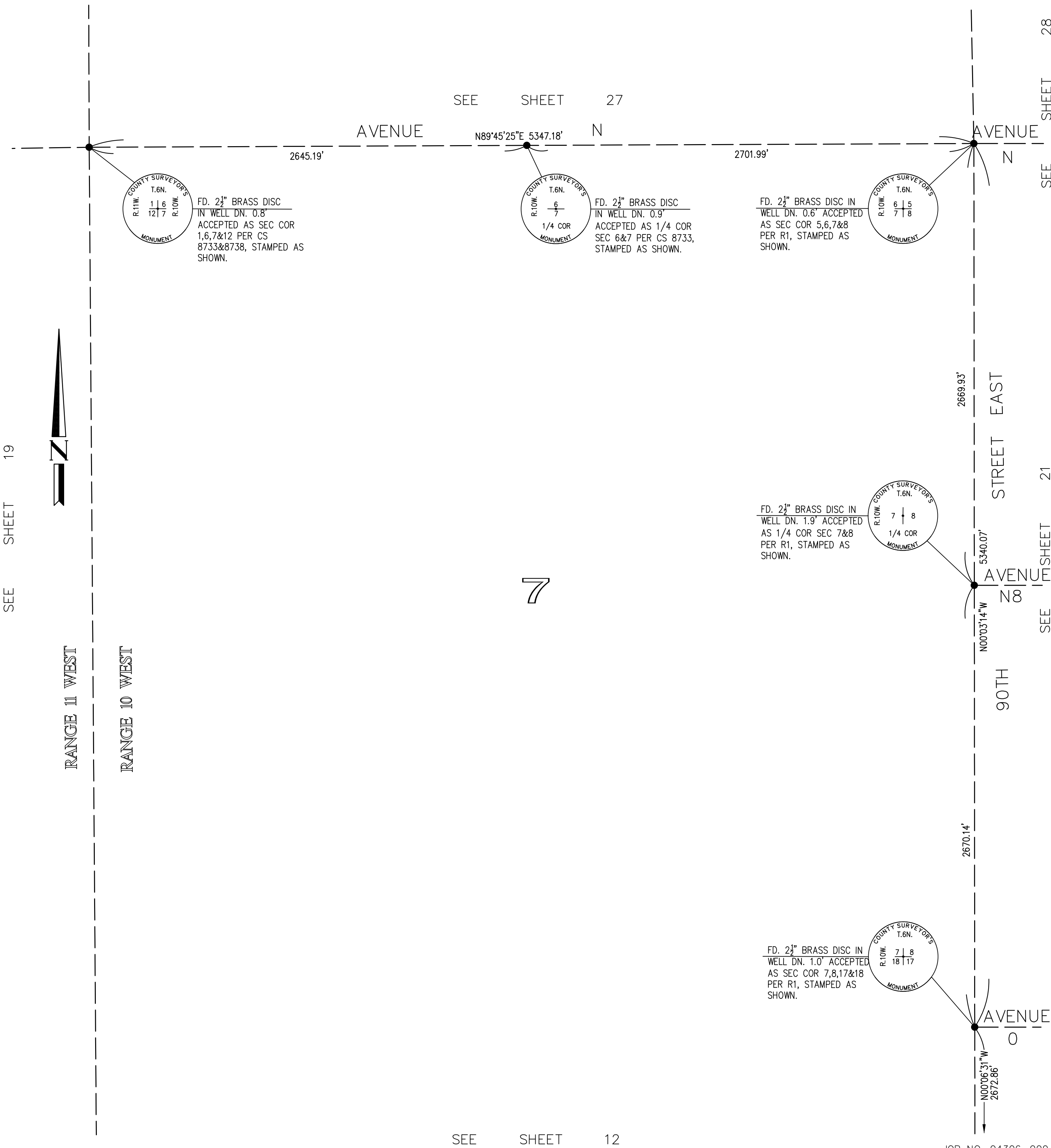
SCALE
1"=400'

SHEET 20 OF 29

RECORD OF SURVEY

PARTLY IN THE CITY OF PALMDALE AND PARTLY IN
THE COUNTY OF LOS ANGELES, STATE OF CALIFORNIA

HALL & FOREMAN, INC. STEVE SHAMBECK, L.S. 6217
NOVEMBER 2005



JOB NO. 04306-000
PLOT FILE NO. 00000

SHEET 21 OF 29

PARTLY IN THE CITY OF PALMDALE AND PARTLY IN
THE COUNTY OF LOS ANGELES, STATE OF CALIFORNIA

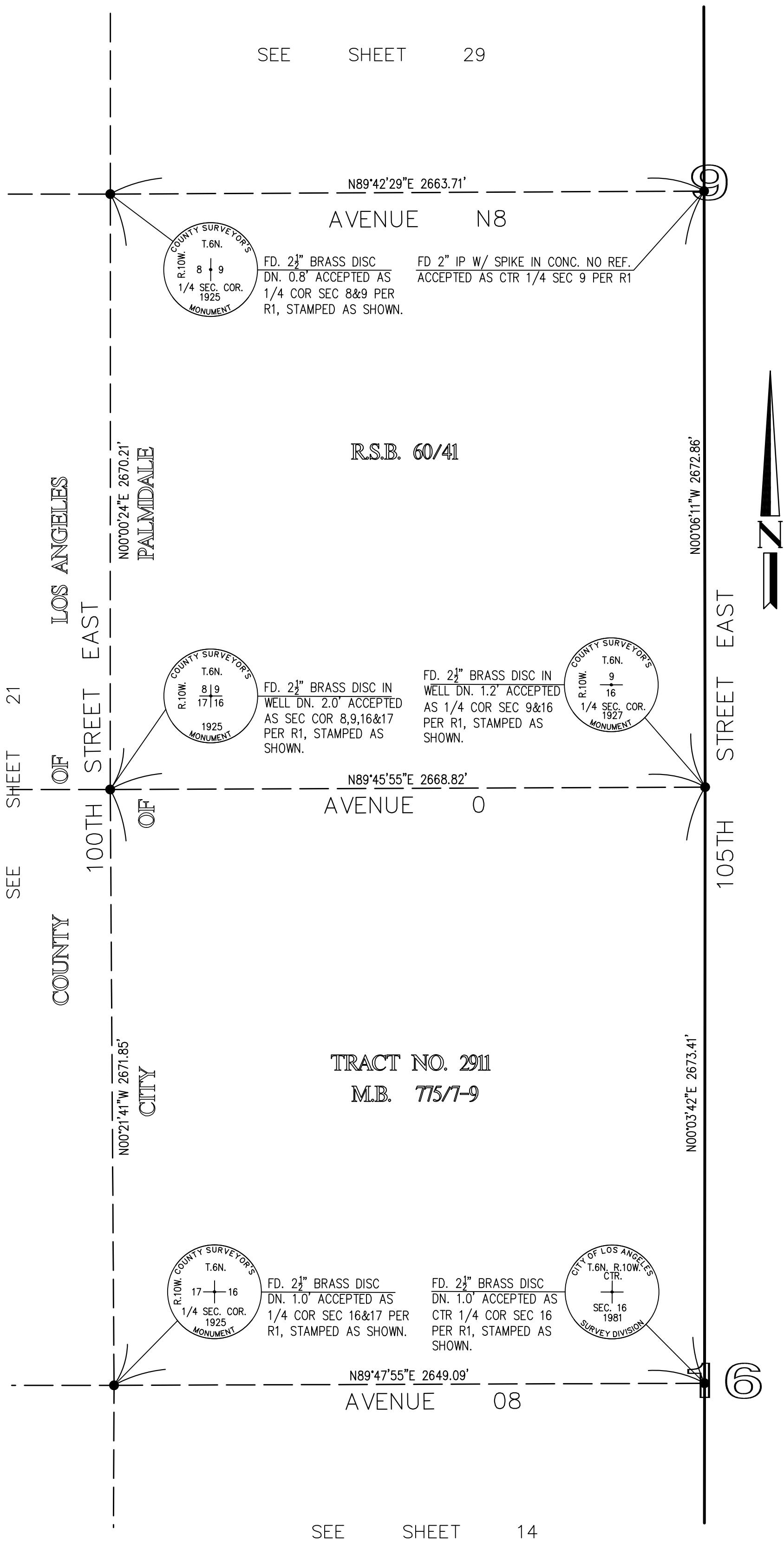
NOVEMBER 2005



SHEET 22 OF 29

PARTLY IN THE CITY OF PALMDALE ANDPARTLY IN
THE COUNTY OF LOS ANGELES, STATE OF CALIFORNIA

HALL & FOREMAN, INC. STEVE SHAMBECK, L.S. 6217
NOVEMBER 2005

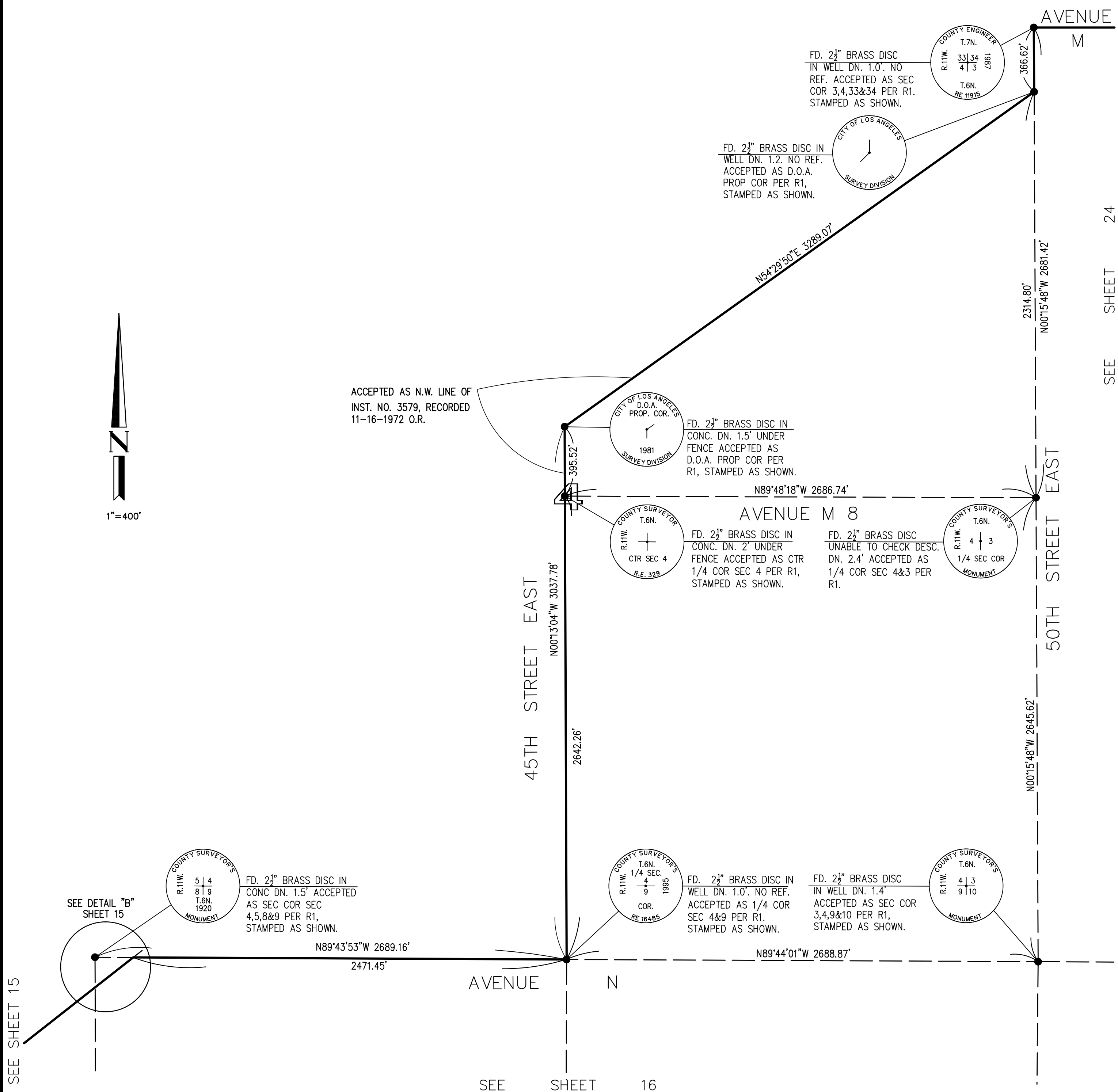


JOB NO. 04306-000
PLOT FILE NO. 00000

SHEET 23 OF 29

PARTLY IN THE CITY OF PALMDALE AND PARTLY IN
THE COUNTY OF LOS ANGELES, STATE OF CALIFORNIA

HALL & FOREMAN, INC. STEVE SHAMBECK, L.S. 6217
NOVEMBER 2005



JOB NO. 04306-000
PLOT FILE NO. 00000

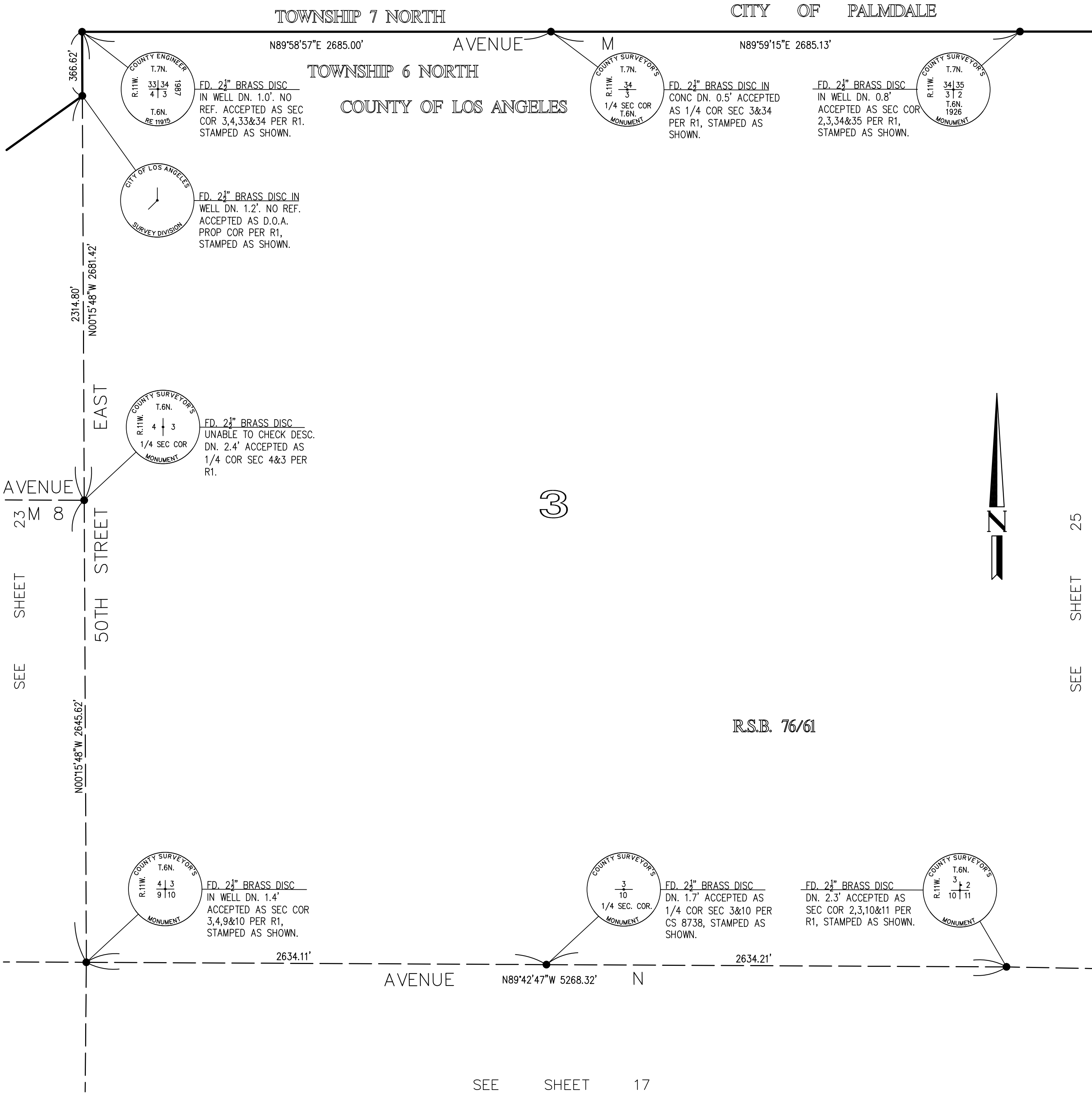
SCALE
1"=400'

SHEET 24 OF 29

RECORD OF SURVEY

PARTLY IN THE CITY OF PALMDALE AND PARTLY IN
THE COUNTY OF LOS ANGELES, STATE OF CALIFORNIA

HALL & FOREMAN, INC. STEVE SHAMBECK, L.S. 6217
NOVEMBER 2005



JOB NO. 04306-000
PLOT FILE NO. 00000

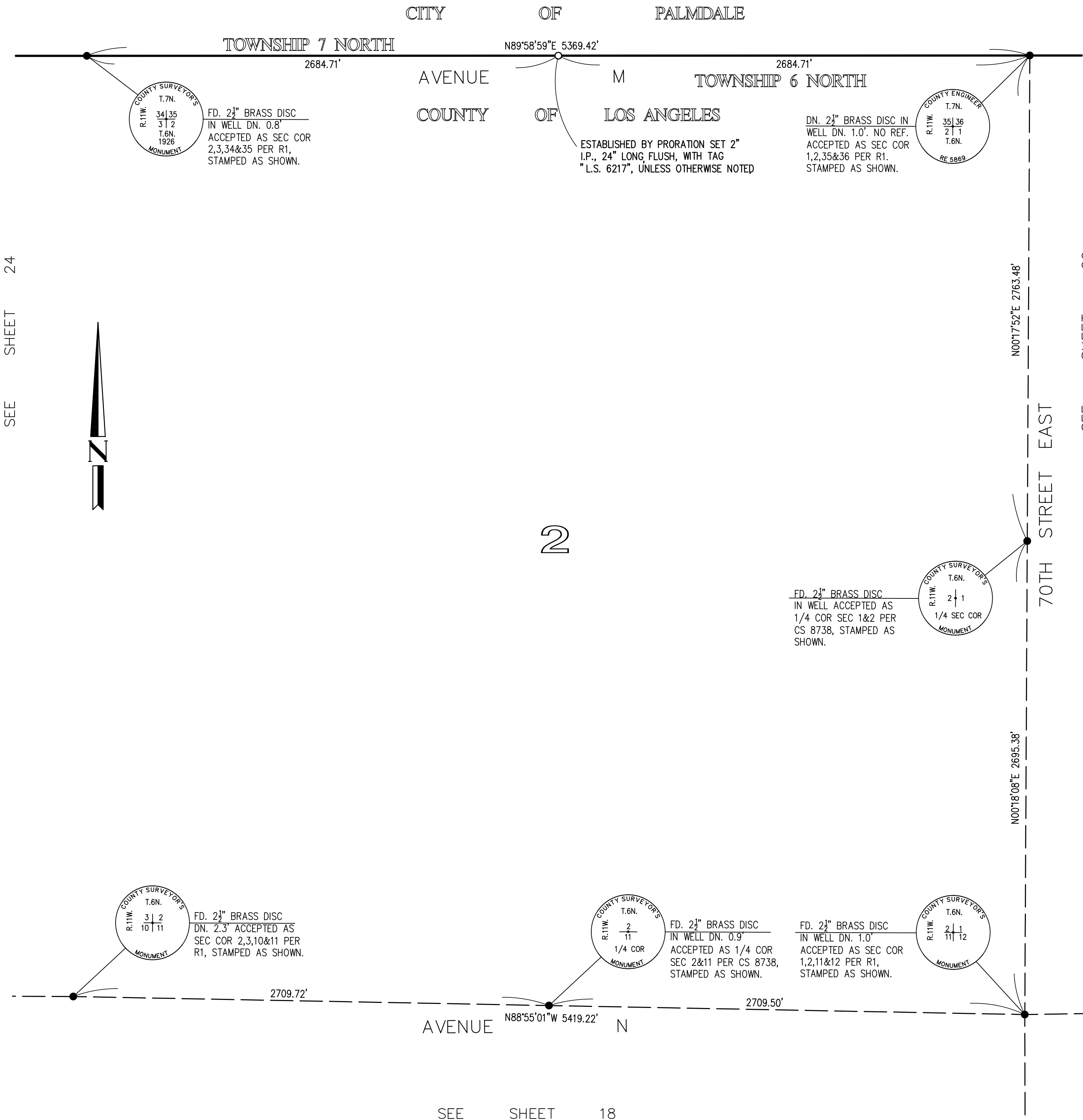
SCALE
1"=400'

SHEET 25 OF 29

RECORD OF SURVEY

PARTLY IN THE CITY OF PALMDALE AND PARTLY IN
THE COUNTY OF LOS ANGELES, STATE OF CALIFORNIA

HALL & FOREMAN, INC. STEVE SHAMBECK, L.S. 6217
NOVEMBER 2005

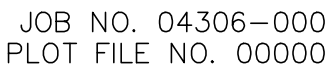


JOB NO. 04306-000
PLOT FILE NO. 00000

SHEET 26 OF 29

PARTLY IN THE CITY OF PALMDALE AND PARTLY IN
THE COUNTY OF LOS ANGELES, STATE OF CALIFORNIA

HALL & FOREMAN, INC. STEVE SHAMBECK, L.S. 6217
NOVEMBER 2005



PARTLY IN THE CITY OF PALMDALE AND PARTLY IN
THE COUNTY OF LOS ANGELES, STATE OF CALIFORNIA

HALL & FOREMAN, INC. STEVE SHAMBECK, L.S. 6217
NOVEMBER 2005

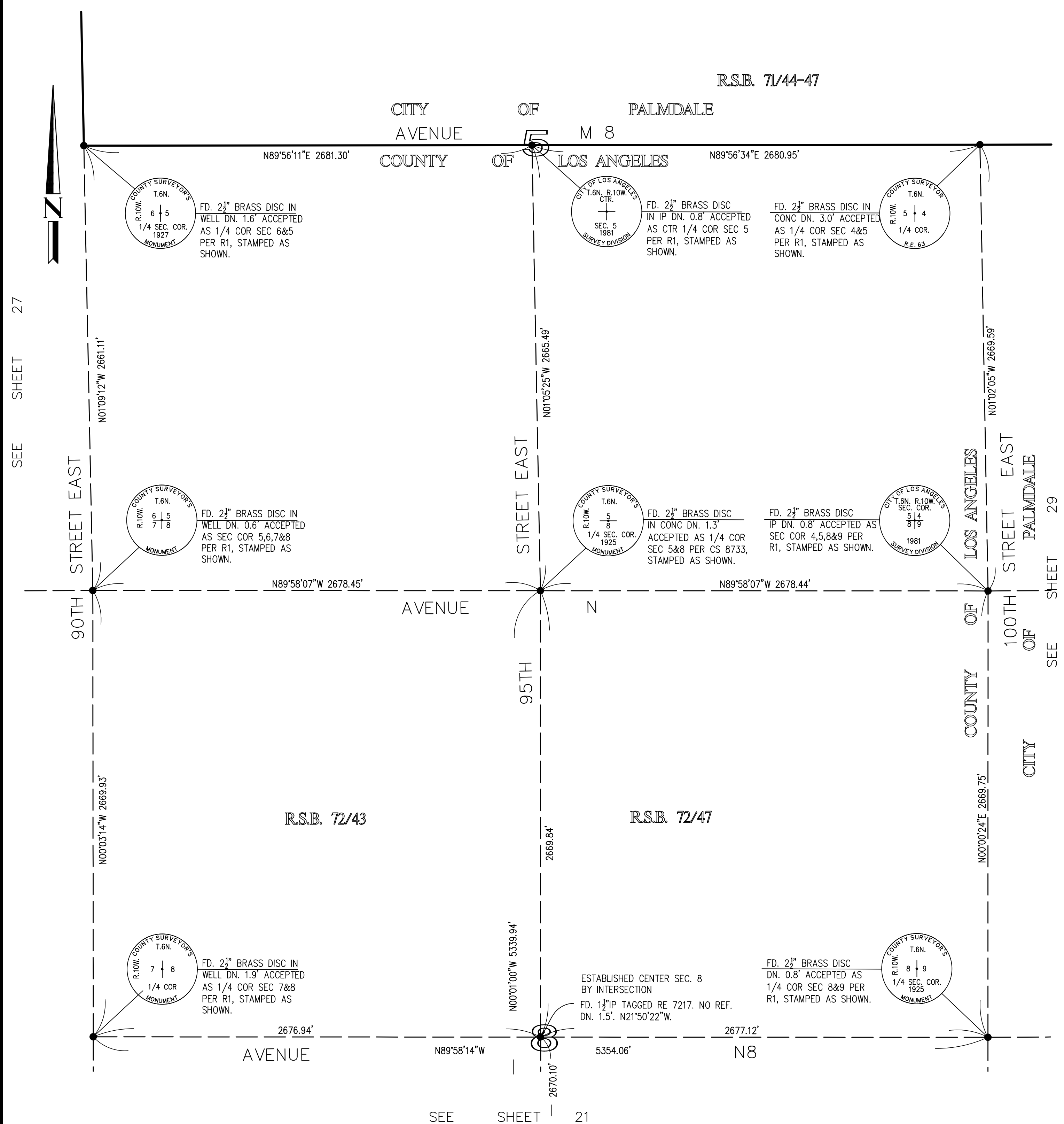


SHEET 28 OF 29

PARTLY IN THE CITY OF PALMDALE AND PARTLY IN
THE COUNTY OF LOS ANGELES, STATE OF CALIFORNIA

HALL & FOREMAN, INC.

STEVE SHAMBECK, L.S. 6217
NOVEMBER 2005



JOB NO. 04306-000
PLOT FILE NO. 00000

PARTLY IN THE CITY OF PALMDALE AND PARTLY IN
THE COUNTY OF LOS ANGELES, STATE OF CALIFORNIA

HALL & FOREMAN, INC. STEVE SHAMBECK, L.S. 6217
NOVEMBER 2005

R.S.B. 72/28-31

