


# **EXHIBIT “4”**

From: "Mike Kovacevich" <MKovacevich@bolthouse.com>  
Subject: **Re: Cutting water pipes that were hooked up to your property.**  
Date: **November 16, 2009 10:43:17 AM PST**  
To: "Sheldon Blum" <blumlaw@sbcglobal.net>  
Cc: "Darren Filkins" <DFilkins@bolthouse.com>, "Steve Rodrigues" <SRodrigues@bolthouse.com>, "Derek Yurosek" <DYurosek@bolthouse.com>  
 6 Attachments, 3.0 MB [Save](#) [Slideshow](#)

To: Mr. Sheldon Blum, Esq.  
Re: Cutting water pipes that were hooked up to your property.

Mr. Blum,

In response to your letter, dated October 23, 2009 (attached), in which you asked for pictures reflecting that all hardware piping casings have been completely removed from your subject property, I am enclosing some photos.

Image 28. This photo was taken of the pipeline that crossed under 70th Street East, where shown (map attached). This photo shows the pipeline before it was capped. It was cut as close to the road as we could without causing the roadway to collapse above the pipeline.

Image 31. This photo is looking north, from where the pipe was cut along 70th Street East.

Image 32. This photo is looking north toward Avenue J, from where the pipe coming south from the Lade Ranch was located. The pipe was cut and capped and covered before we took photos of this location.

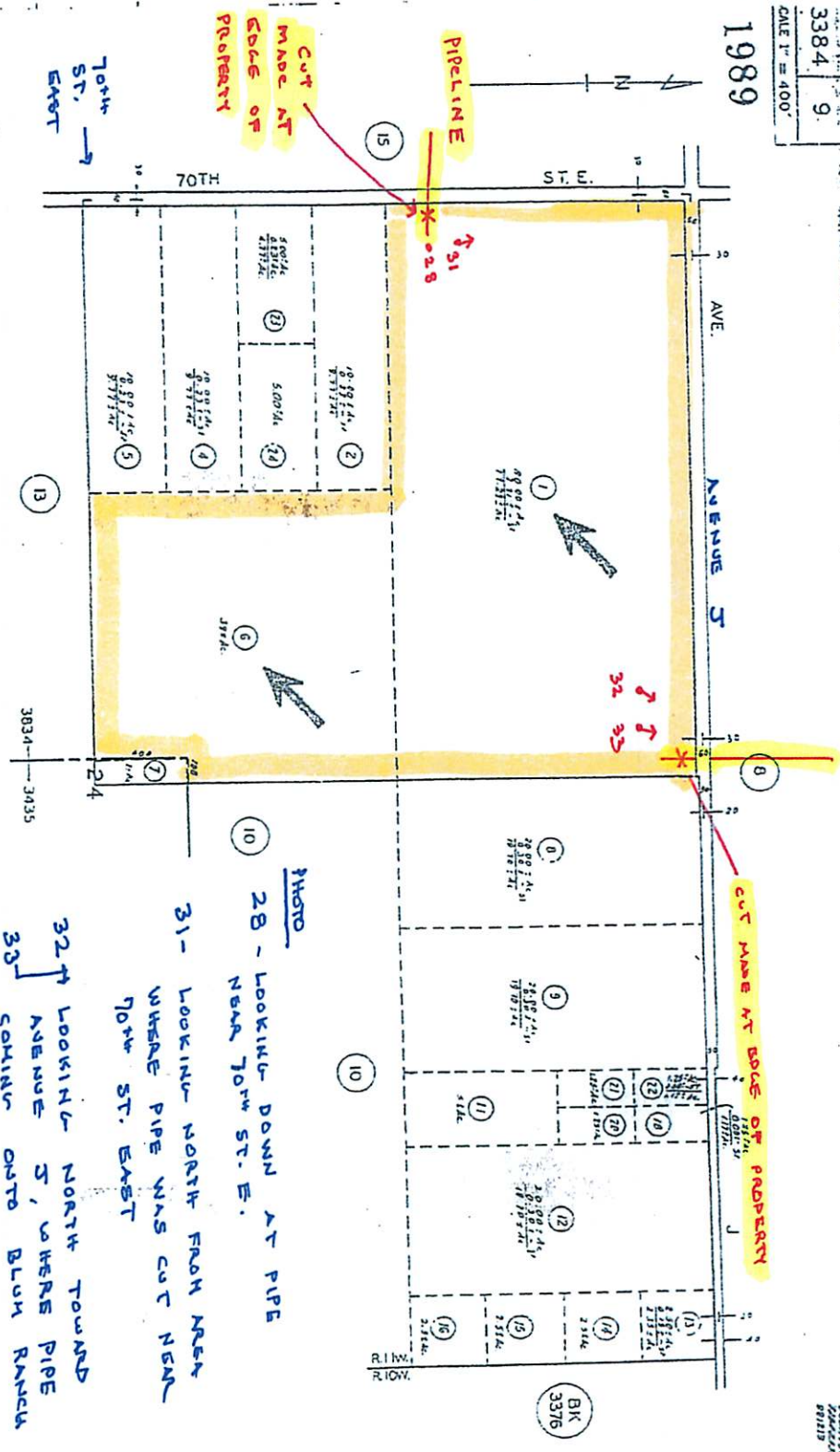
Image 33. This photo is looking north toward Avenue J, from where the pipe coming south from the Lade Ranch was located. The pipe was cut and capped and covered before we took photos of this location.

I hope this suffices to help you close your files on this matter.

Michael W. Kovacevich  
Ag Properties/Legal Manager  
WM. Bolthouse Farms, Inc.  
7200 E. Brundage Lane  
Bakersfield, CA 93307-3016  
Office Phone: (661) 366-7205. Extension 1658  
Cell Phone: (661) 342-0615  
FAX: (661) 616-1315  
Email: [mikek@bolthouse.com](mailto:mikek@bolthouse.com)

3384 9  
SCALE 1" = 400'

BLUM - MAP



T. 7N, R. 11W

CODE 3435 3834  
FOR PREP. ASSMT. SEE: 308-14

NOVEMBER 11, 2009

- PHOTO
- 28 - LOOKING DOWN AT PIPE NEAR 70th ST. E.
  - 31 - LOOKING NORTH FROM AREA WHERE PIPE WAS CUT NEAR 70th ST. EAST
  - 32 - LOOKING NORTH TOWARD AVENUE S, WHERE PIPE COMING OUT OF BLUM RANCH FROM LADE RANCH.

ASSESSOR'S MAP  
COUNTY OF LOS ANGELES, CALIF.